

2023 Pavement Management Project

Phase 2 Construction Notice – Streets and Spot Curb Replacement Area

May 26, 2023

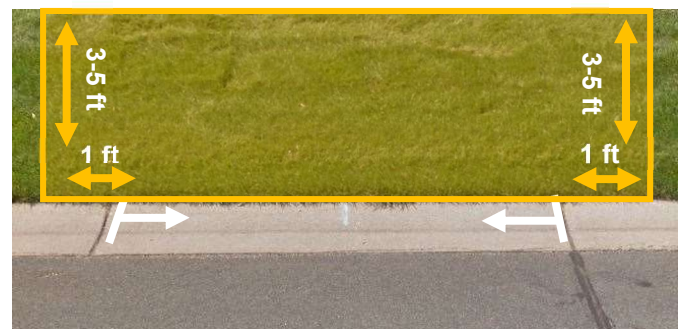
Construction Starts May 31	Duration 6 weeks	Description of Work Streets and Spot Curb
--------------------------------------	----------------------------	---

Anticipated Construction Timeline *(subject to change)*

- May 31 - June 14:** Saw-cutting and removing curb as marked. Spot utility improvements will also take place during this time.
- June 13-16:** Concrete curb replacement and concrete driveways as needed. Please note that new concrete cannot be driven over until the contractor removes ribbon across driveway (about 5 days after placement). The contractor will not warranty concrete that has been driven on prior to the contractor removing ribbon. Hydrant pads will also be constructed as part of this project. This involves disturbing the area between the back of curb and the street side of the hydrant, with a width of approximately 8 feet. **Homeowners are responsible to remove any irrigation, invisible dog fence, or landscaping that you would like to save.**
- June 15-21:** Backfill of concrete curb and driveways.
- June 21:** Asphalt driveway patching as needed.
- June 19-29:** Removal of the existing roadway pavement, lowering of gate valves and manholes, and grading of gravel in preparation for paving.
- June 29-30:** Pave first of two layers of pavement. Pavement can be driven on about 30 minutes after placement.
- June 30 - July 7:** The contractor will raise existing structures within the street to the final pavement height along with placing topsoil and seed in disturbed areas.
- August 1-3:** The top layer of pavement will be placed. Pavement can be driven on about 30 minutes after placement. A future notice will be provided prior to placement with additional details.
- August 14:** Place or replace street signs.

Protecting your sprinkler systems, invisible fence, and landscaping

If you wish to protect your private features from damage during construction, please temporarily remove them from the City right of way area that will be impacted by construction (about 3-5ft behind the curb marked for removal). Sprinkler heads can be disconnected, and the hose can be dug up and pulled back. Spot curb areas will have white areas painted on curb marked for removal. Please protect features within this area. Please protect features behind the entire length of curb in full-curb removal areas.



Any damage to private features in the right of way will not be repaired, replaced, or altered by the city or the contractor.

Street and driveway parking during construction

Parking will be allowed on streets throughout construction between 7:00PM and 7:00AM.

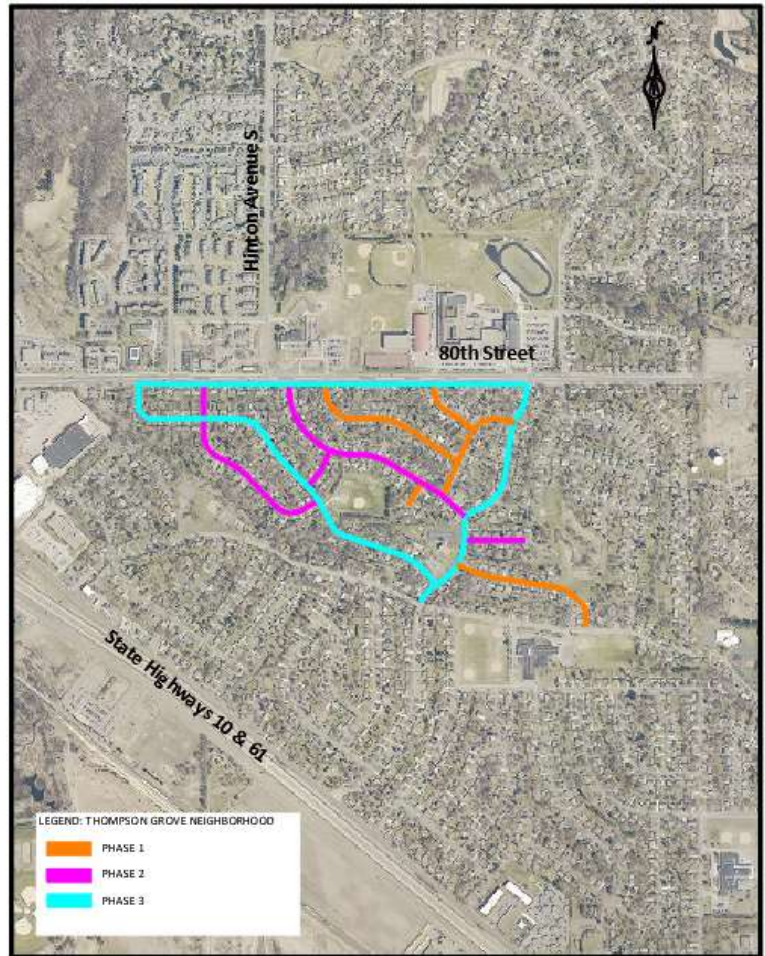
Construction operation	Where to park
Concrete Removal and Placement	<ul style="list-style-type: none"> • Park in your driveway if no curb is marked in front of your driveway or • If curb is marked in front of your driveway park on road where white paint is not present. • <i>If you require special accommodations, please contact the project hotline</i>
Pavement Removal and Grading/Paving Operations	<ul style="list-style-type: none"> • Park in your driveway. There may be short durations of 30-60 min when removals or paving occurring in front of your home causes temporary loss of access so plan accordingly.

Garbage and mail service

Garbage and Mail service will remain the same with garbage pickup occurring on same day as it currently does throughout construction.

Stay Informed

If you have any questions or concerns, please contact the project hotline or project email.



 **Hotline**
651-760-0203

 **Email**
cg2023@bolton-menk.com

 **Website**
<https://www.cottagegrovemn.gov/654/2023-Pavement-Management-Project>