

TH 41 Roadway Expansion (US 212 to Pioneer Trail)



Construction Staging Workshop

June 20, 2017

www.bolton-menk.com/41reconstruction

TH41 Roadway Expansion - US 212 to Pioneer Trail • Carver County MN

TH 41 Roadway Expansion (US 212 to Pioneer Trail)

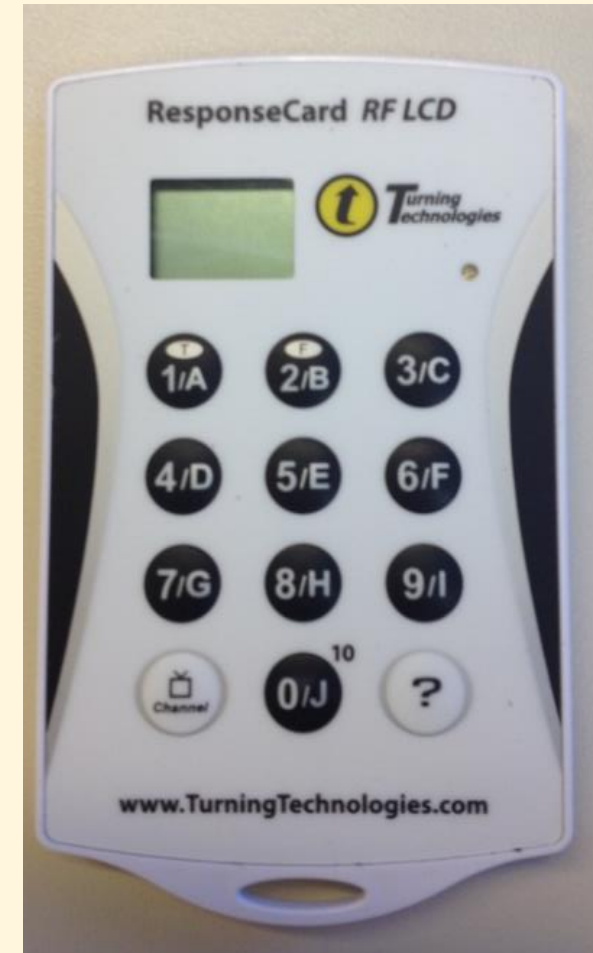
Purpose of Meeting

- ✓ Project Purpose and Need
- ✓ Construction Staging and Schedule Alternatives
 - We need your input!
- ✓ Next Steps and Schedule

TH 41 Roadway Expansion (US 212 to Pioneer Trail)

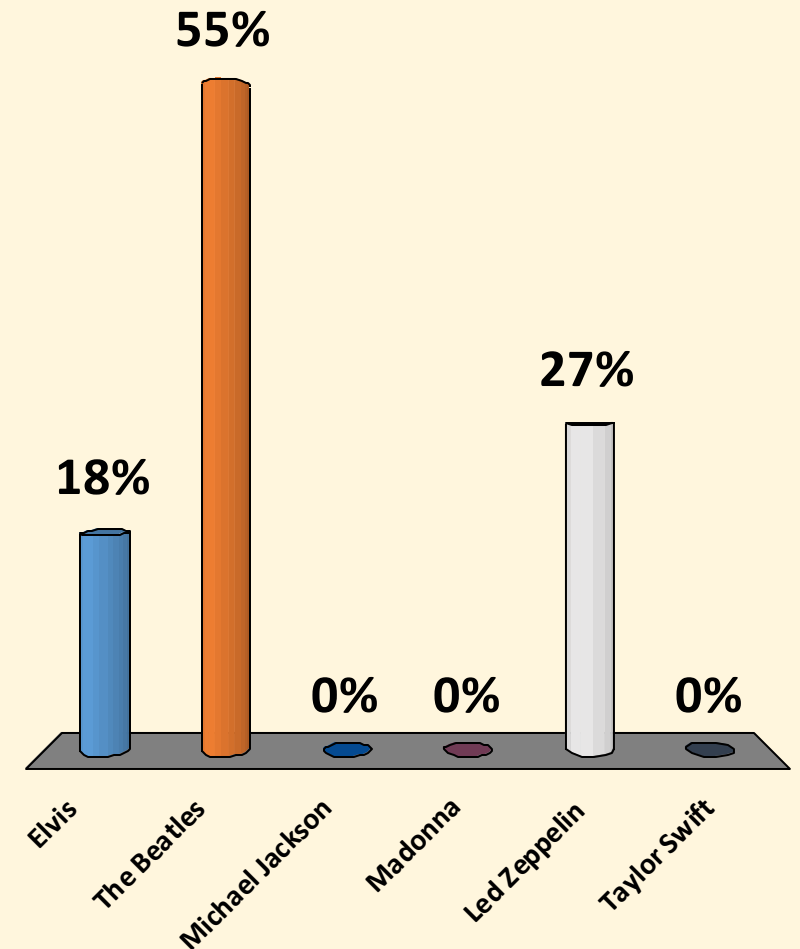
Audience Polling

- Press number on “clicker” that corresponds to an answer that is asked.
- Allows for instant polling of the group.
- Let’s Practice.



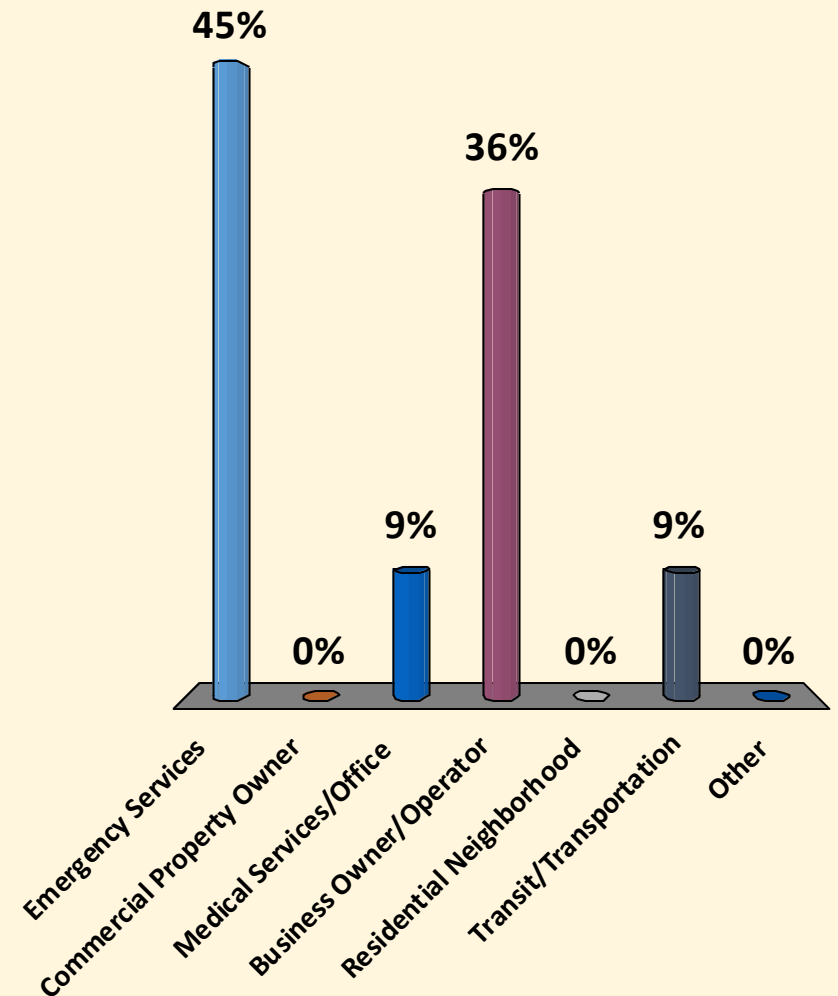
I would consider myself a fan of _____.

- A. Elvis
- B. The Beatles
- C. Michael Jackson
- D. Madonna
- E. Led Zeppelin
- F. Taylor Swift



What best describes your interest in Highway 41?

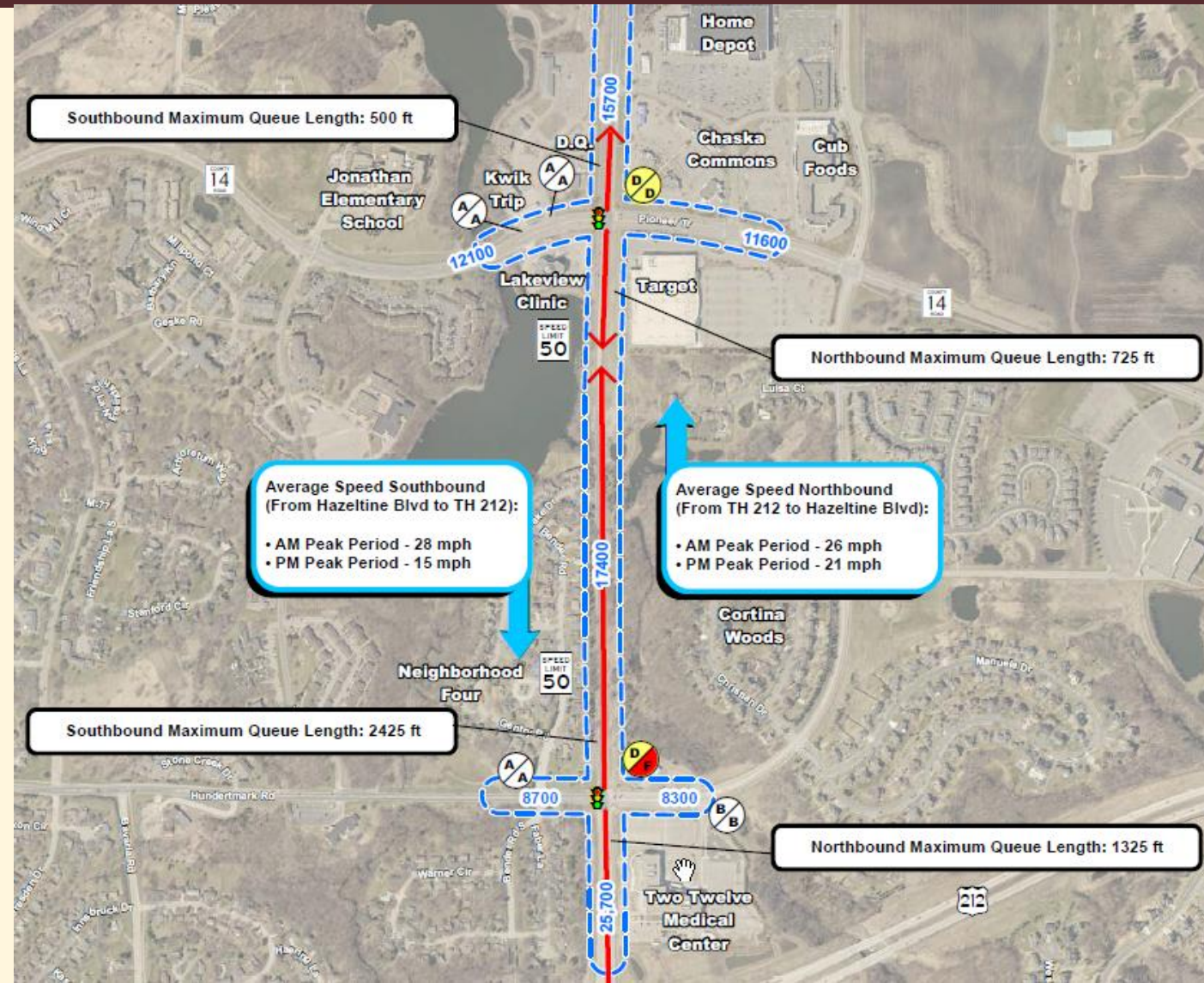
- A. Emergency Services
- B. Commercial Property Owner
- C. Medical Services/Office
- D. Business Owner/Operator
- E. Residential Neighborhood
- F. Transit/Transportation
- G. Other



TH 41 Roadway Expansion (US 212 to Pioneer Trail)

Purpose & Need

- Existing roadway has not kept up with growth in Chaska and the region:
 - ✓ Excessive congestion and queue lengths during peak travel times
 - ✓ Elevated crash rates
- Residential and Employment access needs
- Americans with Disabilities (ADA) deficiencies



TH 41 Roadway Expansion (US 212 to Pioneer Trail)

Project Key Elements

- Project led by Carver County (federal & state grant funds)
 - Hwy 41 is a state roadway – MnDOT requirements and procedures apply
- Expand Hwy 41 to four-lane between US 212 and Pioneer Trail
- Intersection improvements at Hundertmark Road & Pioneer Trail
- Pedestrian and Bicycle Enhancements
- Construction is scheduled to begin in the Spring of 2018



TH 41 Roadway Expansion (US 212 to Pioneer Trail)

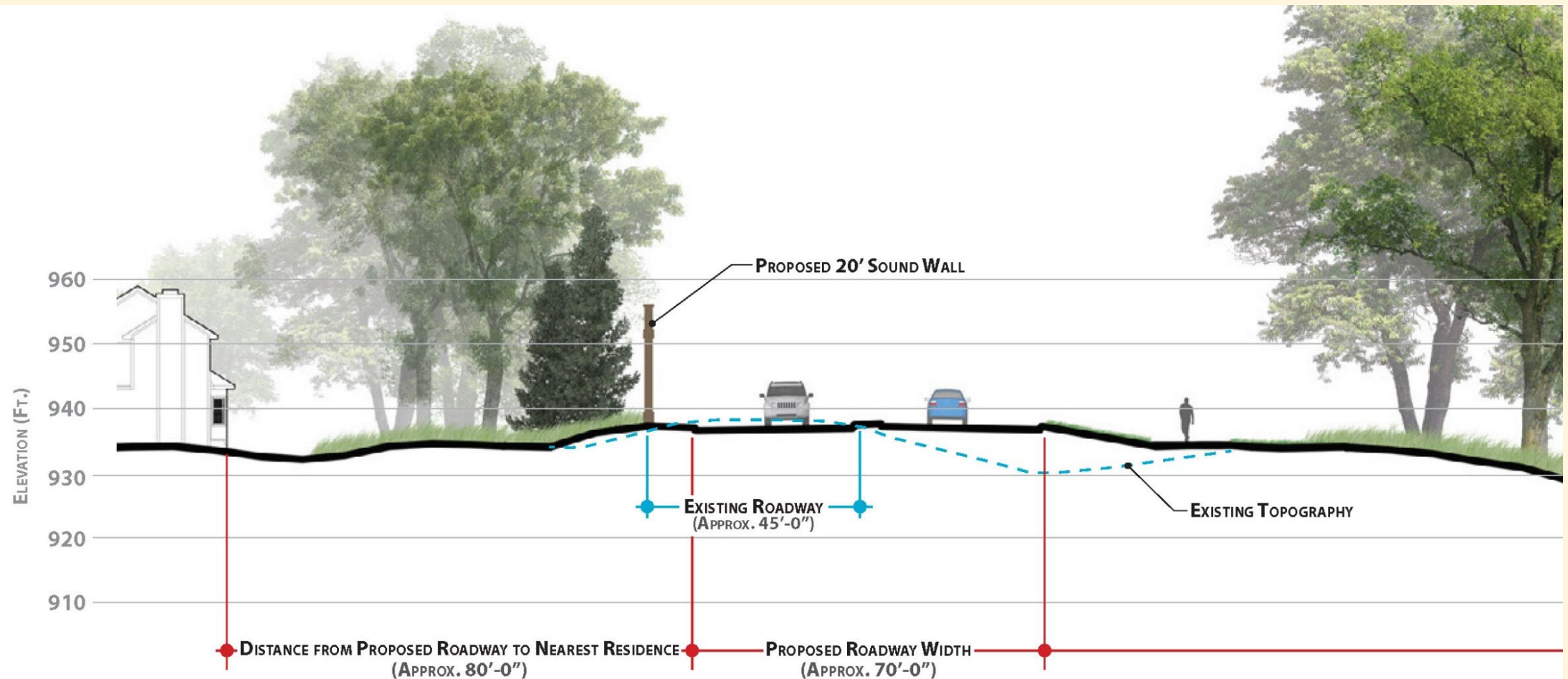
Project Benefits

- Decreases Delay
 - **Today:** up to 4 minutes of delay during peak hour
 - **Future with Preferred Alternative:** at most 75 seconds of delay anticipated
- Decreases Queuing
 - **Today:** over 100 vehicles queued up during peak hour
 - **Future with Preferred Alternative:** at most 22 vehicles anticipated to be queued up
- Improves Pedestrian Safety
 - Pedestrian Underpass
 - Trail Network Connection
 - Pedestrian Crossings at Signals



TH 41 Roadway Expansion (US 212 to Pioneer Trail)

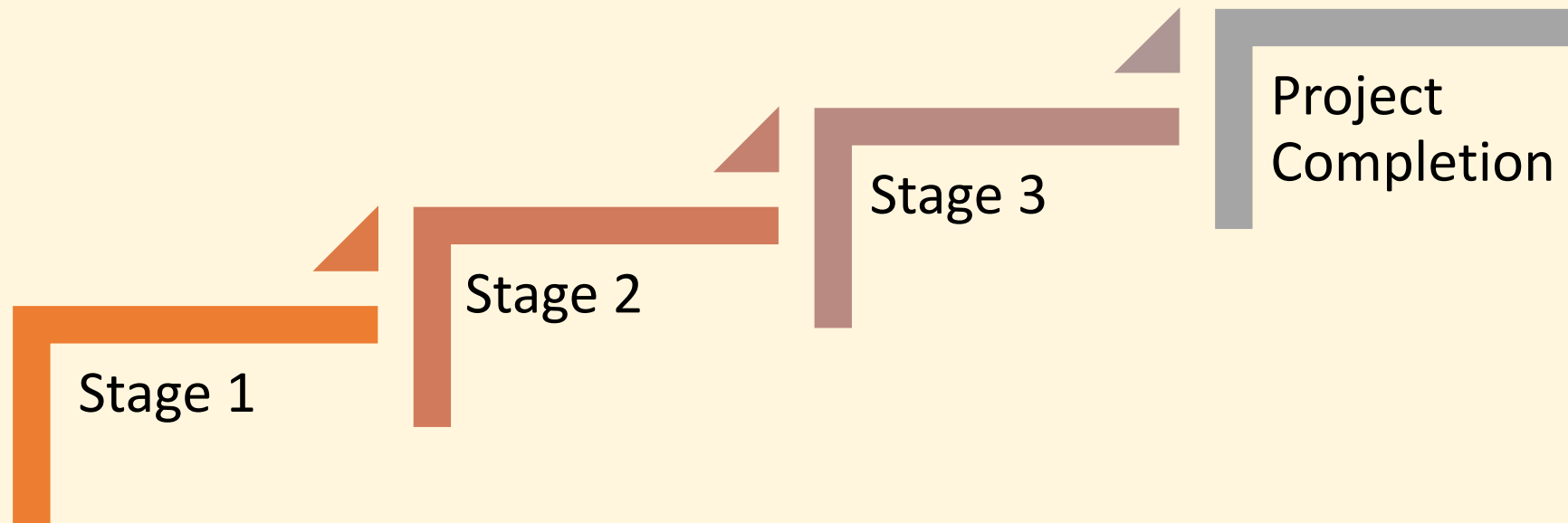
Typical Section



TH 41 Roadway Expansion (US 212 to Pioneer Trail)

What is Construction Staging?

Sequencing of work, or the steps that need to be taken during construction in order to build a project.



TH 41 Roadway Expansion (US 212 to Pioneer Trail)

Construction Staging

&

Schedule

Key Routes

Access In/Out

Public Safety

Working Space

Underground
Utilities

Emergency Services

Community Events

Construction duration based
on production rates and
working days

May to October is "normal"

5-6 working days not including
holidays



TH 41 Roadway Expansion (US 212 to Pioneer Trail)

Detour Route

10 min detour route

vs.

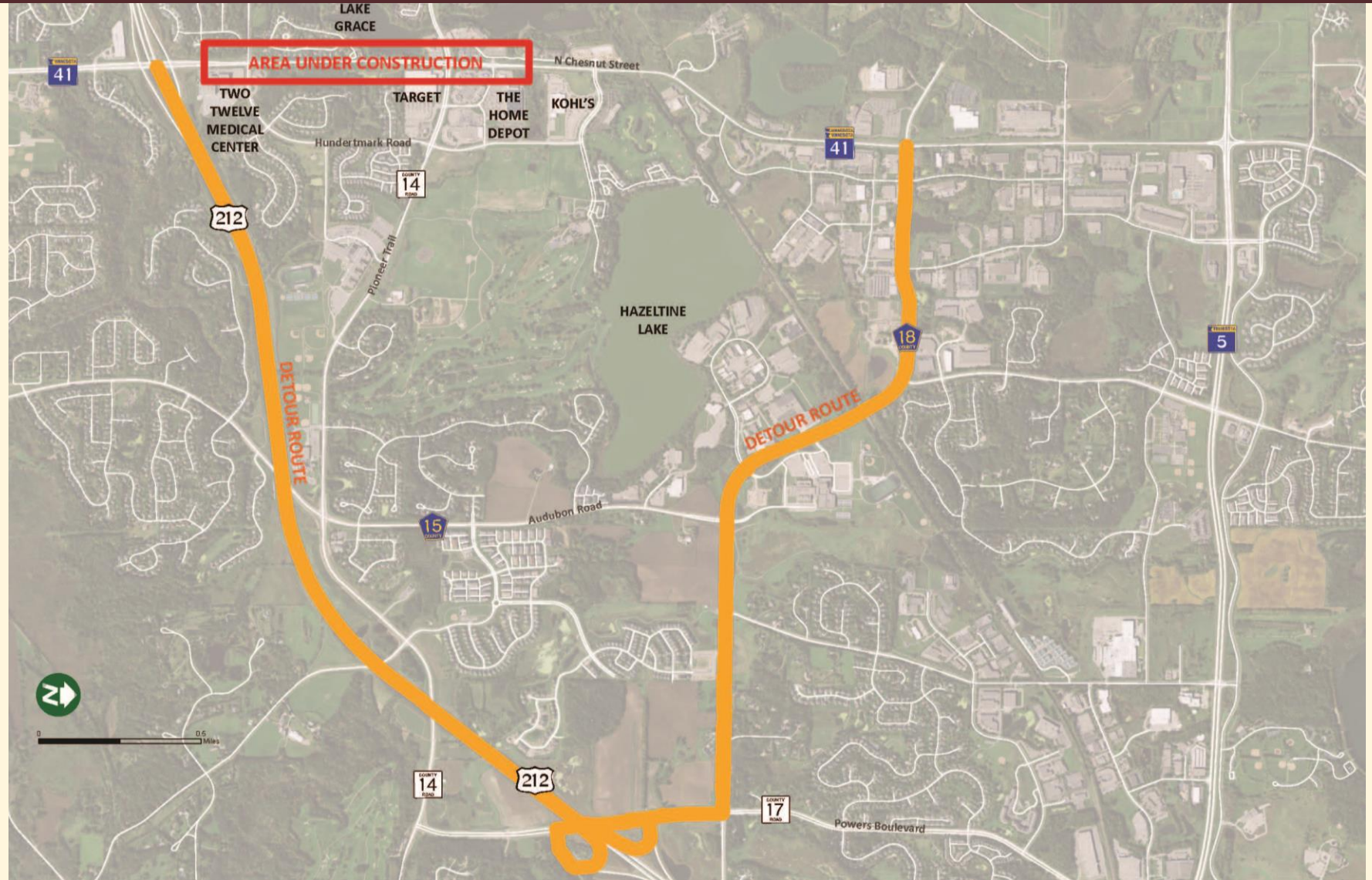
5 min regular route

How it works

1/3 follow detour

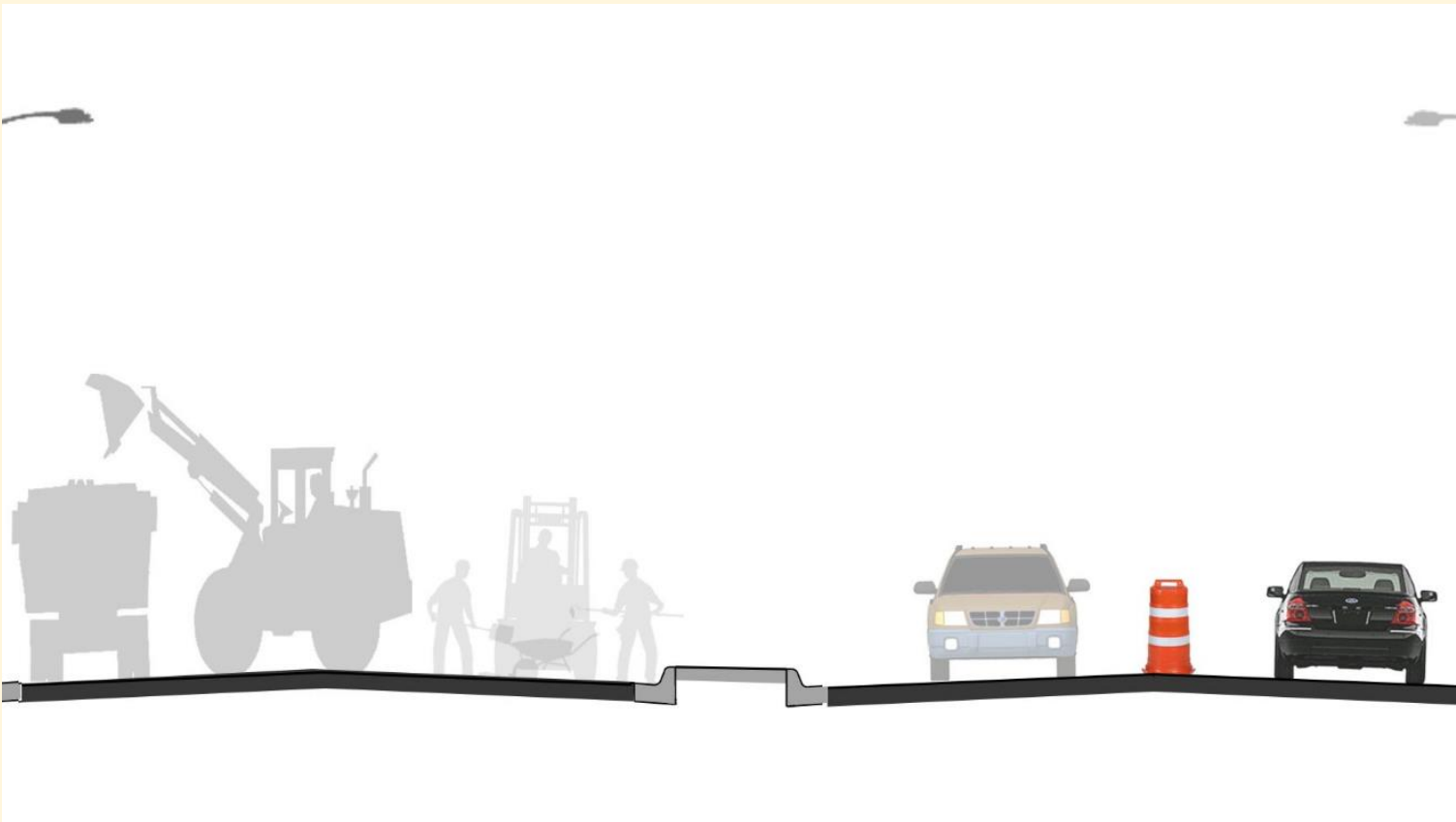
1/3 destinations within

1/3 find different route
or change trip



TH 41 Roadway Expansion (US 212 to Pioneer Trail)

Under Traffic



VS.

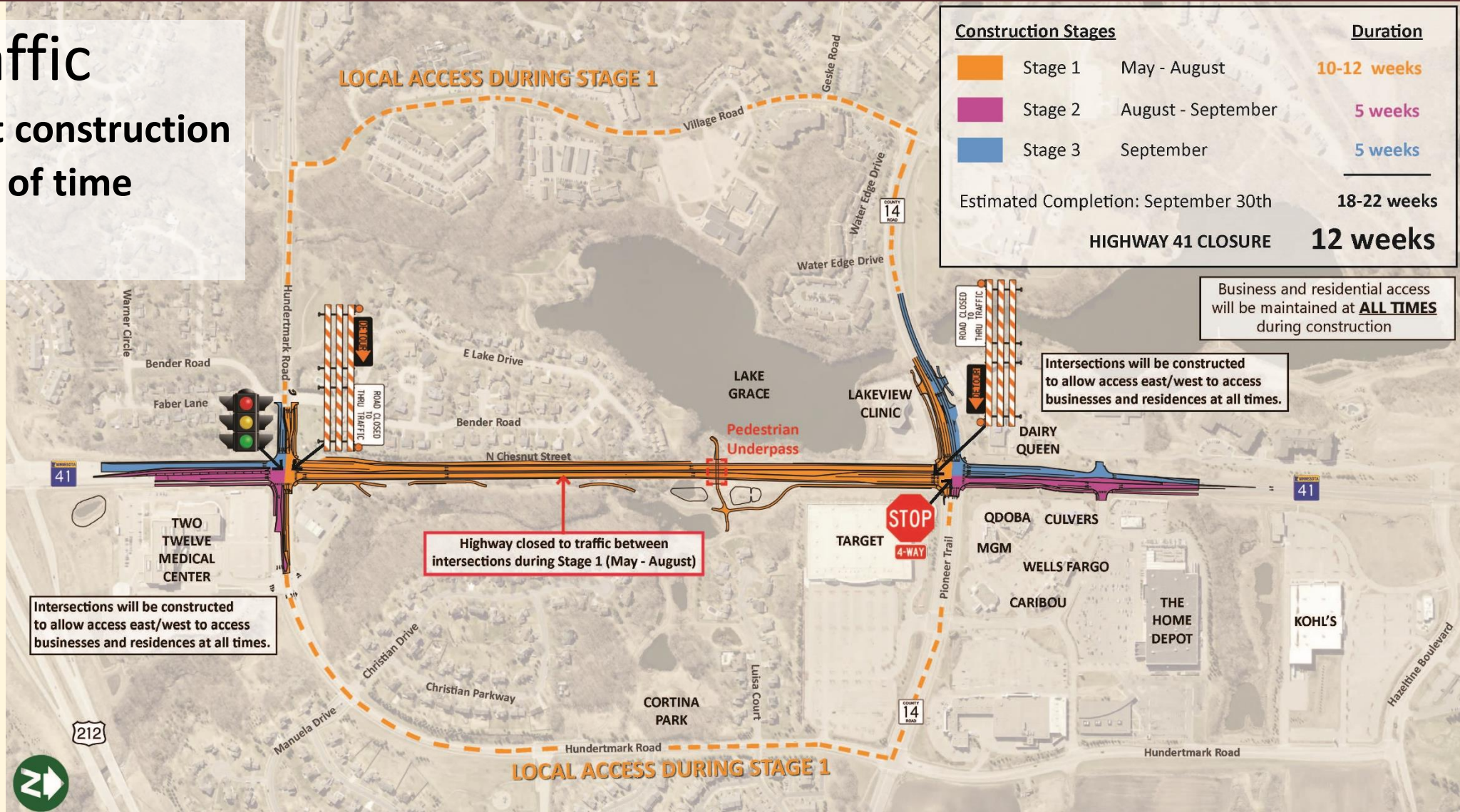
Detour Traffic



TH 41 Roadway Expansion (US 212 to Pioneer Trail)

Detour Traffic

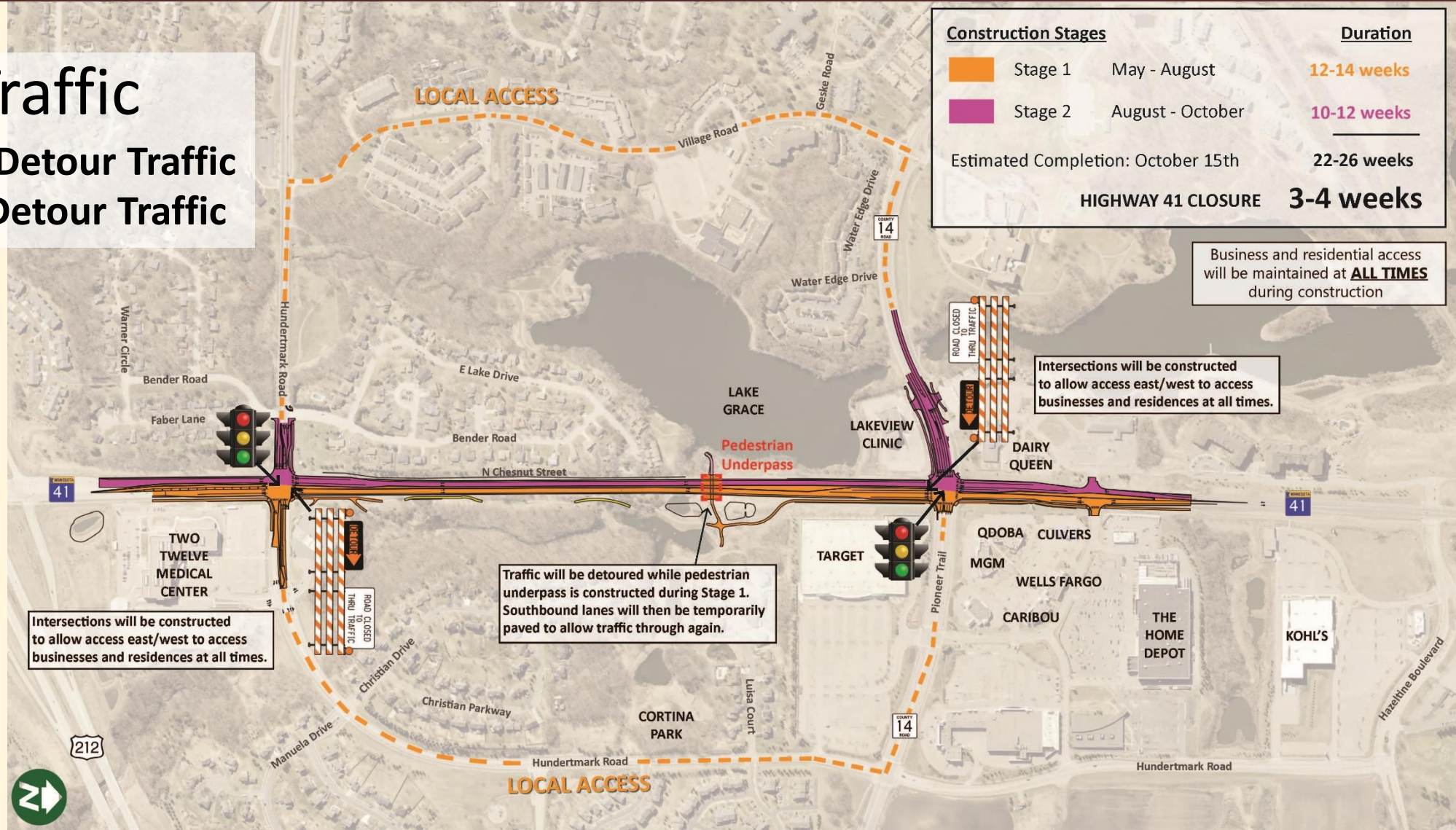
- ✓ Most efficient construction
- ✓ Least amount of time
- ✓ Lowest cost



TH 41 Roadway Expansion (US 212 to Pioneer Trail)

Minimized Traffic

- ✓ More time than Detour Traffic
- ✓ More cost than Detour Traffic





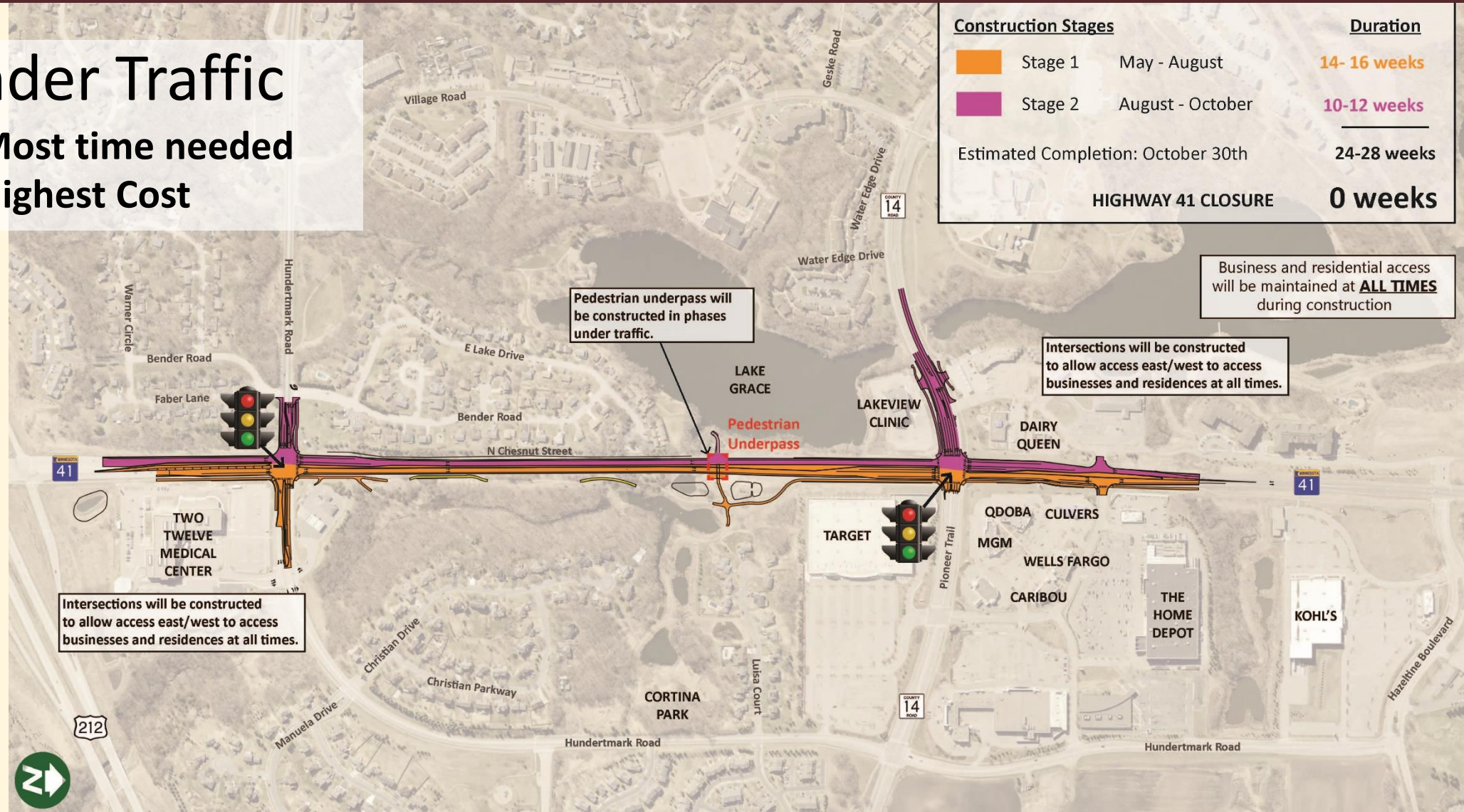
TH 41 Roadway Expansion (US 212 to Pioneer Trail)

Under Traffic

- ✓ Most time needed
- ✓ Highest Cost

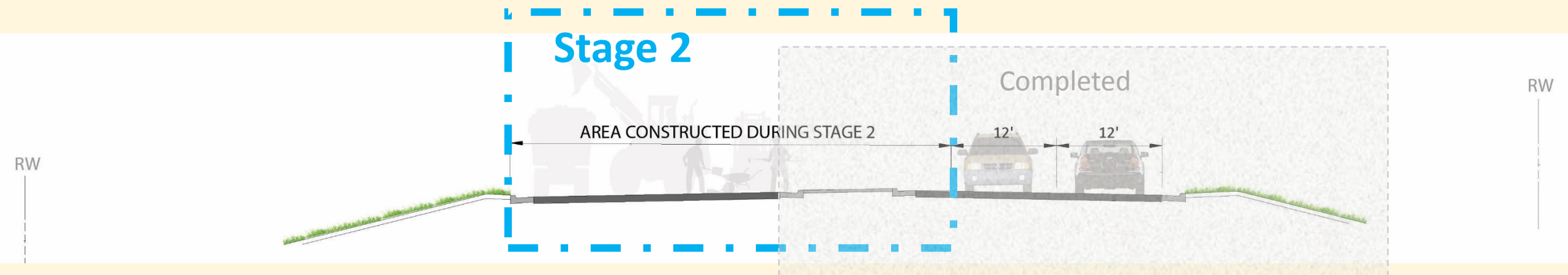
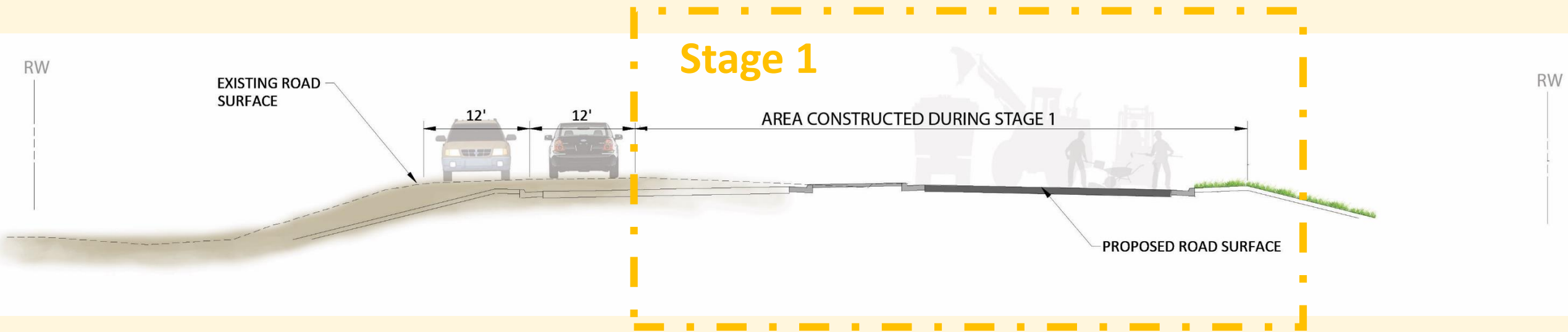
Construction Stages

Construction Stages		Duration
	Stage 1 May - August	14- 16 weeks
	Stage 2 August - October	10-12 weeks
Estimated Completion: October 30th		24-28 weeks
HIGHWAY 41 CLOSURE		0 weeks



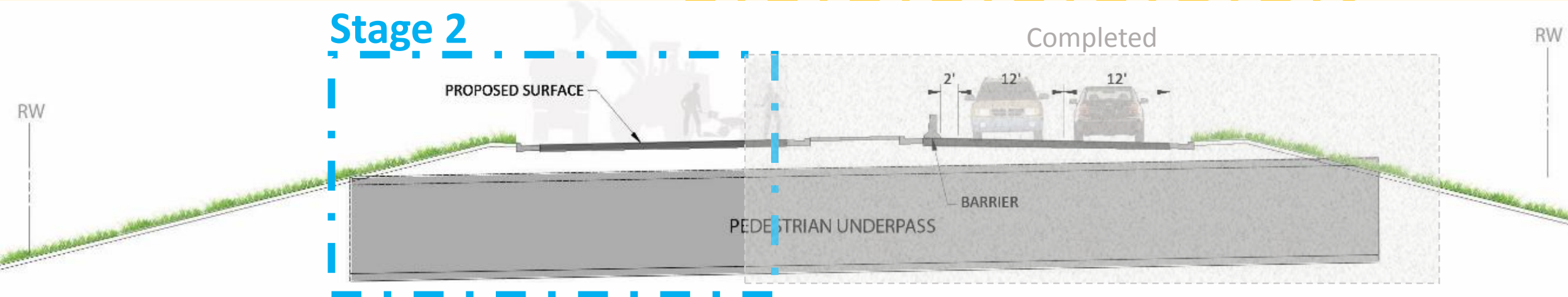
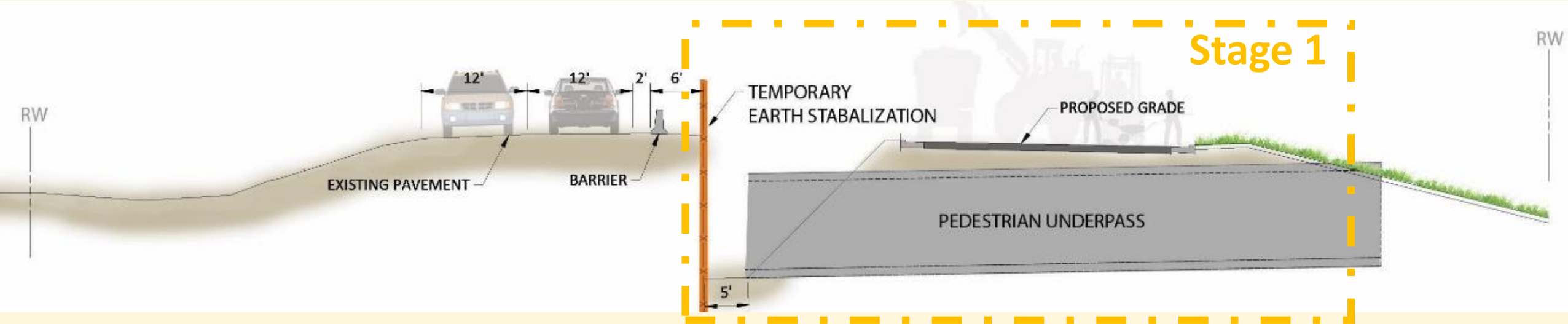
TH 41 Roadway Expansion (US 212 to Pioneer Trail)

Under Traffic Construction Phasing



TH 41 Roadway Expansion (US 212 to Pioneer Trail)

Under Traffic Construction Phasing



TH 41 Roadway Expansion (US 212 to Pioneer Trail)

Summary of Alternatives

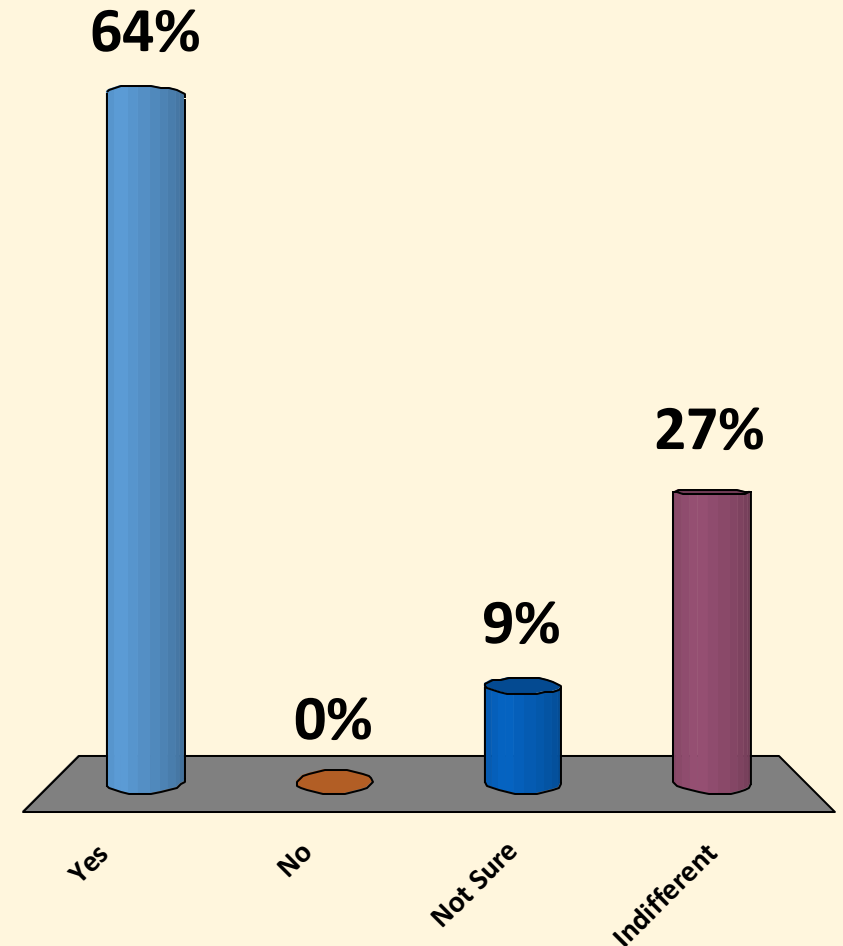
- Option 1, Detour Traffic
 - Full closure allows for most efficient construction
 - Least amount of time to construct
 - Lowest cost of construction
- Option 2, Minimized Detour
 - Closure during underpass construction
 - More time to construct compared to Option 1
 - Greater cost of construction compared to Option 1
- Option 3, Under Traffic
 - No road closures
 - Most time needed to construct
 - Highest costs of construction

Could you support Option 1, Detour Traffic?

- A. Yes
- B. No
- C. Not Sure
- D. Indifferent

Option 1, Detour Traffic

- Full closure allows for most efficient construction
- Least amount of time to construct
- Lowest cost of construction

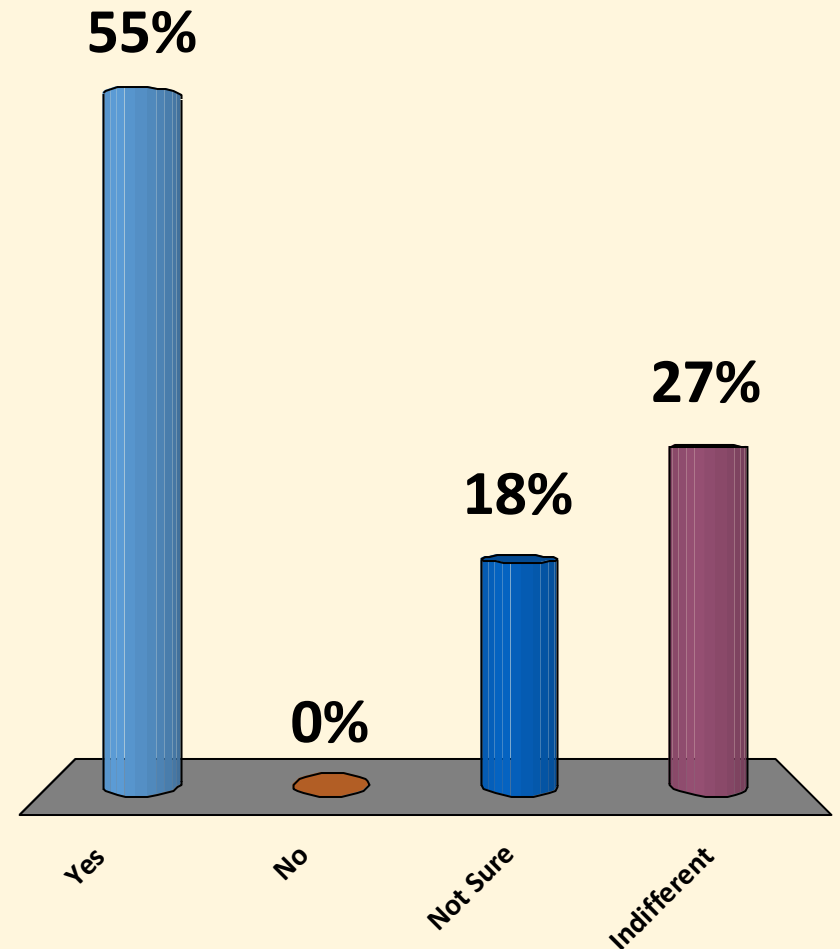


Could you support Option 2, Minimized Traffic?

- A. Yes
- B. No
- C. Not Sure
- D. Indifferent

Option 2, Minimized Traffic

- Closure during underpass construction
- More time to construct compared to Option 1
- Greater cost of construction compared to Option 1

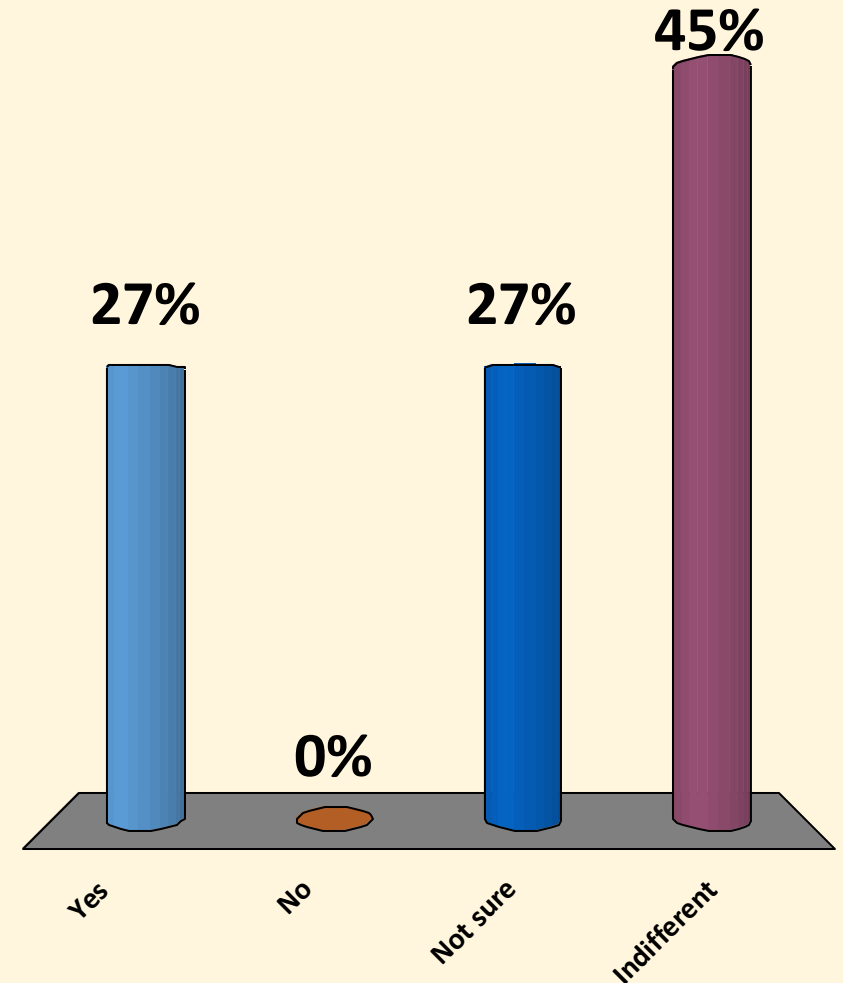


Could you support Under Traffic?

- A. Yes
- B. No
- C. Not sure
- D. Indifferent

Option 3, Under Traffic

- No road closures
- Most time needed to construct
- Highest costs of construction



TH 41 Roadway Expansion (US 212 to Pioneer Trail)

Construction Staging

Questions / Clarifications?

TH 41 Roadway Expansion (US 212 to Pioneer Trail)

Timeline

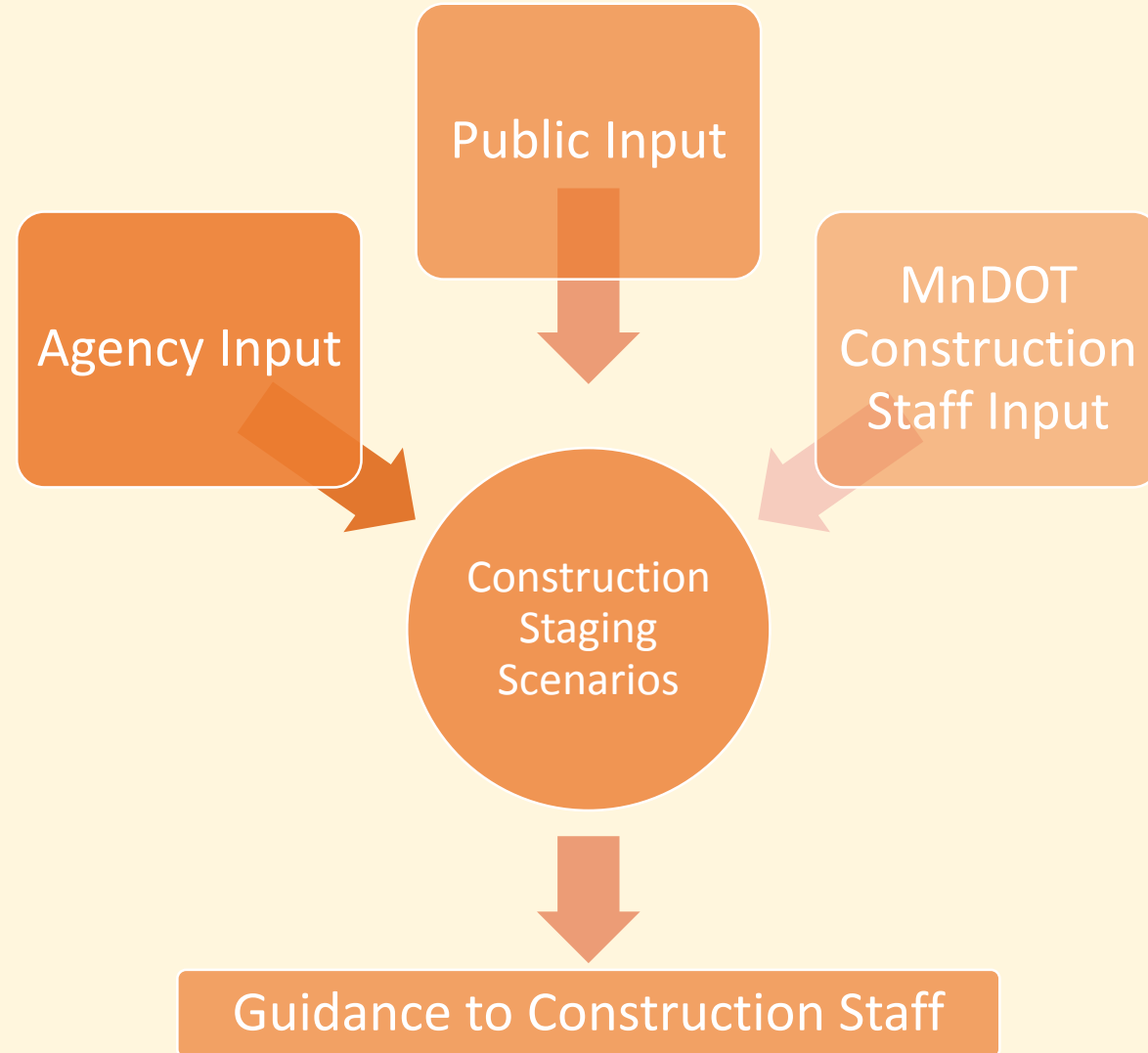
Fall 2017
Staging Workshop



Winter 2018
Bid Letting
(Contractor Input)



Spring 2018
Construction



TH 41 Roadway Expansion (US 212 to Pioneer Trail)



Project Contacts/Information

Lyndon Robjent, P.E.

Public Works Director / County Engineer

Carver County

P: 952-466-5200

lrobjent@co.carver.mn.us

Chris Chromy, P.E., PTOE

Consulting Project Manager

Bolton & Menk, Inc.

P: 952-890-0509

chrisch@bolton-menk.com

www.bolton-menk.com/41reconstruction

TH41 Roadway Expansion - US 212 to Pioneer Trail • Carver County MN