

TH 41 Roadway Expansion (US 212 to Pioneer Trail)



Construction Staging Workshop #2

November 1, 2017

www.bolton-menk.com/41reconstruction
TH41 Roadway Expansion - US 212 to Pioneer Trail • Carver County MN

TH 41 Roadway Expansion (US 212 to Pioneer Trail)

Purpose of Meeting

What? Selected Construction Staging Alternative

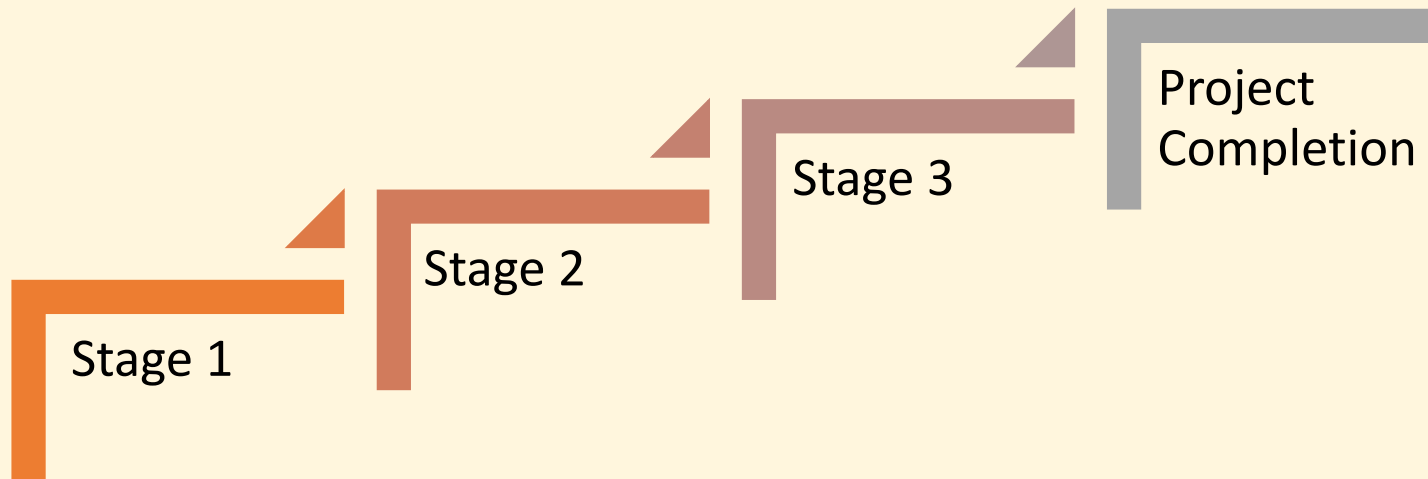
Why? Workshop #1 Input

How? Construction Staging & Communications Plan

TH 41 Roadway Expansion (US 212 to Pioneer Trail)

What is Construction Staging?

Sequencing of work, or the steps that need to be taken during construction in order to build a project.



TH 41 Roadway Expansion (US 212 to Pioneer Trail)

Construction Staging

&

Schedule

Key Routes

Access In/Out

Public Safety

Working Space

Underground
Utilities

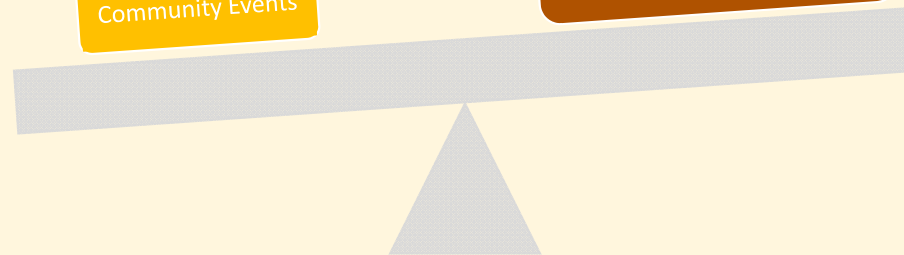
Emergency Services

Community Events

Construction duration based
on production rates and
working days

May to October is "normal"

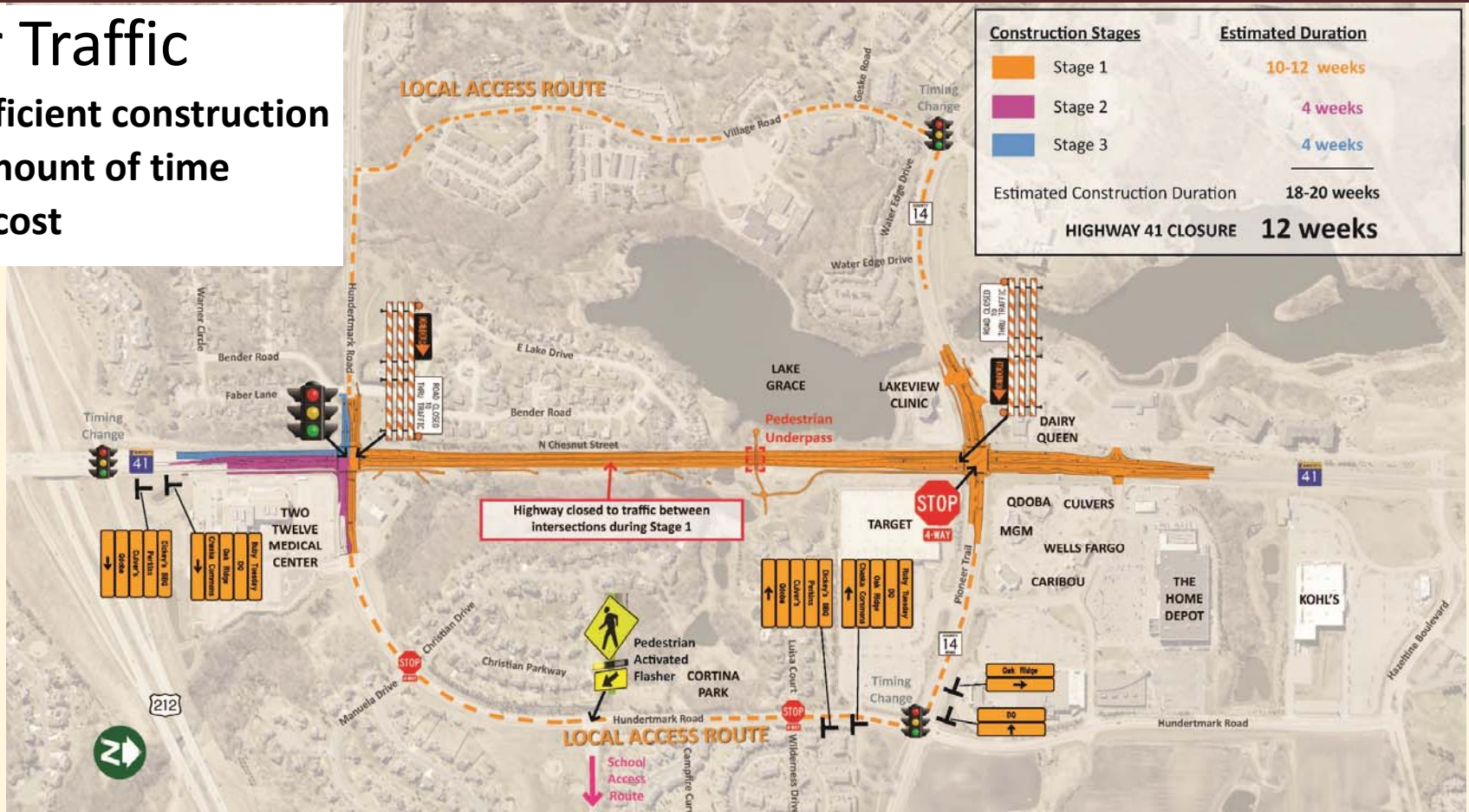
5-6 working days not including
holidays



TH 41 Roadway Expansion (US 212 to Pioneer Trail)

Detour Traffic

- ✓ Most efficient construction
- ✓ Least amount of time
- ✓ Lowest cost



TH 41 Roadway Expansion (US 212 to Pioneer Trail)

Detour Route

10 min detour route

vs.

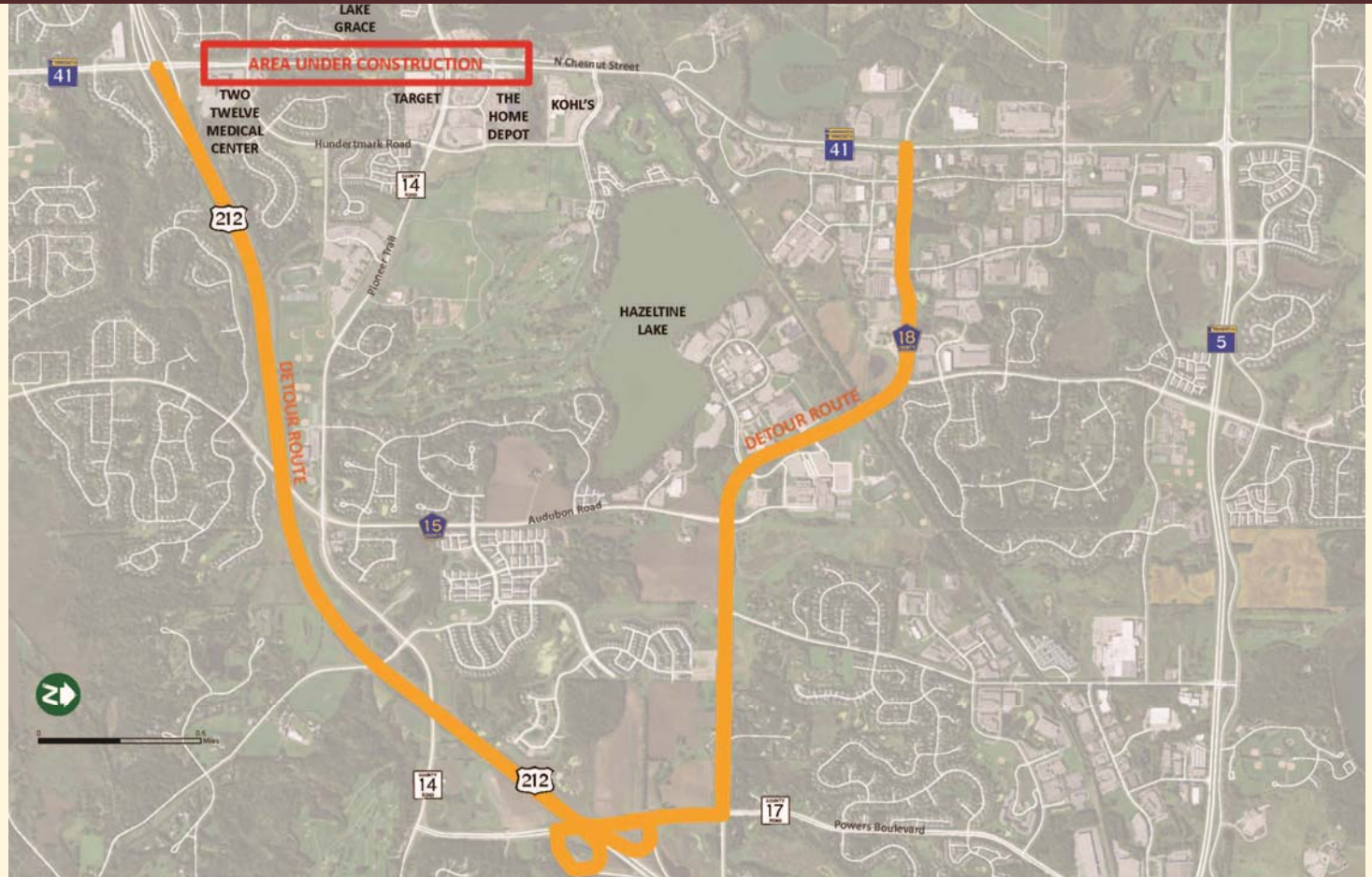
5 min regular route

How it works

1/3 follow detour

1/3 destinations within

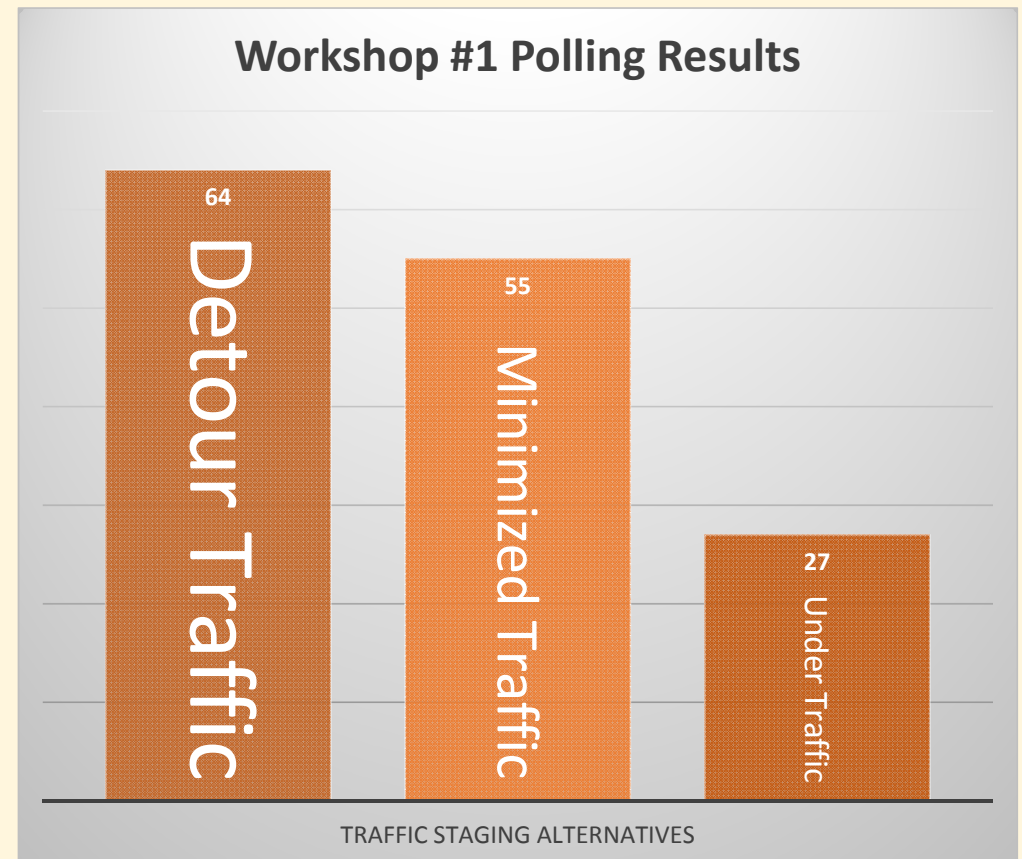
1/3 find different route
or change trip



TH 41 Roadway Expansion (US 212 to Pioneer Trail)

Why Detour Traffic?

- Full closure allows:
 - Most efficient construction
 - Least amount of time to construct
 - Lowest cost
 - Flexible construction schedule



TH 41 Roadway Expansion (US 212 to Pioneer Trail)

Timeline

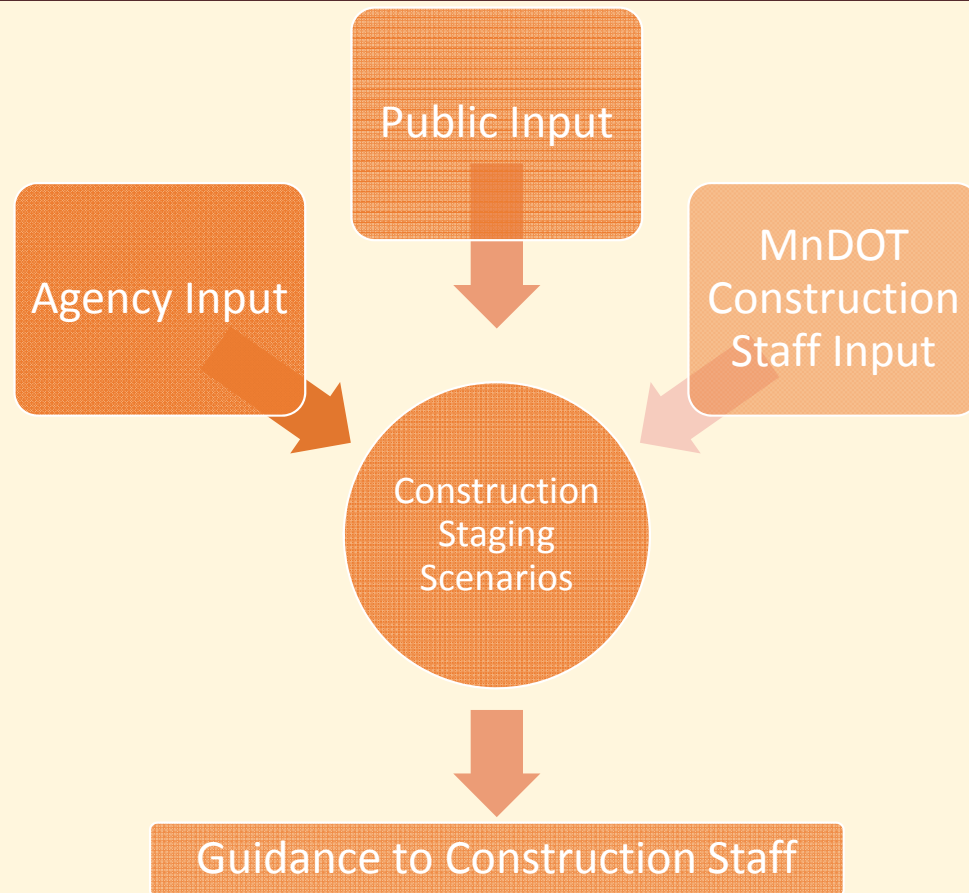
Fall 2017
Staging Workshop



Winter 2018
Bid Letting
(Contractor Input)



Spring 2018
Construction



TH 41 Roadway Expansion (US 212 to Pioneer Trail)

Primary Concerns/Input we Heard

Maintain Emergency Vehicle Access

Minimize Construction Disruption During Peak Business Times

Cost Penalties for Late Construction

Business Signage

TH 41 Roadway Expansion (US 212 to Pioneer Trail)

Concern: Maintain Emergency Vehicle Access



TH 41 Roadway Expansion (US 212 to Pioneer Trail)

Concern: Minimize Construction Disruption during Peak Business Times

Under Traffic



Detour Traffic



VS.

\$1/2 Million (5%)

Cost Savings

4-6 weeks

Time Savings

TH 41 Roadway Expansion (US 212 to Pioneer Trail)

Highway 41 Timing Breakdown

Item	Month 1	Month 2	Month 3
Removals	█		
Grading, Ponds, Retaining Walls		█	
Pedestrian Underpass		█	
Noise Wall			█
Roadway, Sidewalks, Trails			█
Signing, Striping, Seeding			█

Moving a total of 75,000 cubic yards of soil

TH 41 Roadway Expansion (US 212 to Pioneer Trail)

Concern: Business Signage

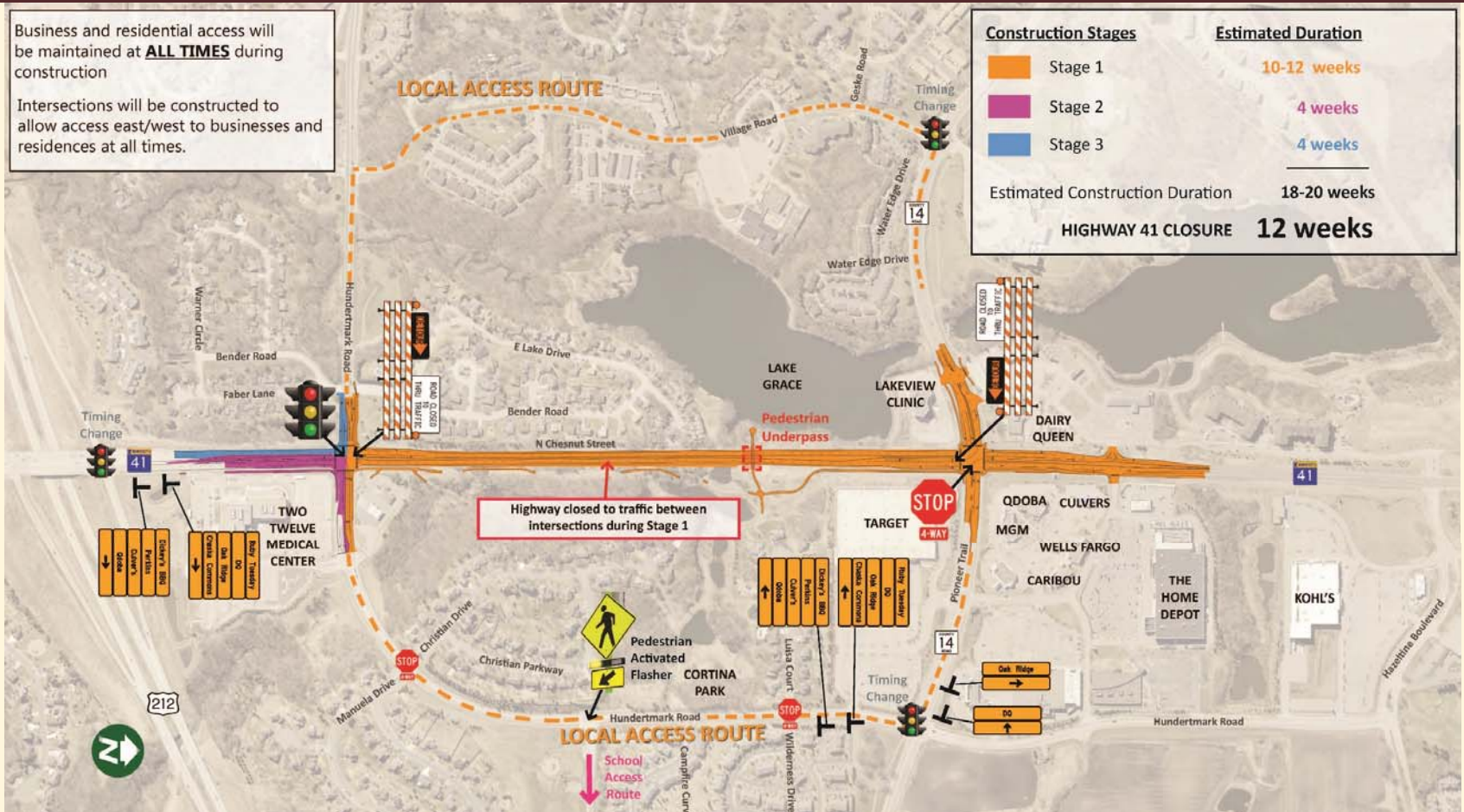


TH 41 Roadway Expansion (US 212 to Pioneer Trail)

Business and residential access will be maintained at **ALL TIMES** during construction

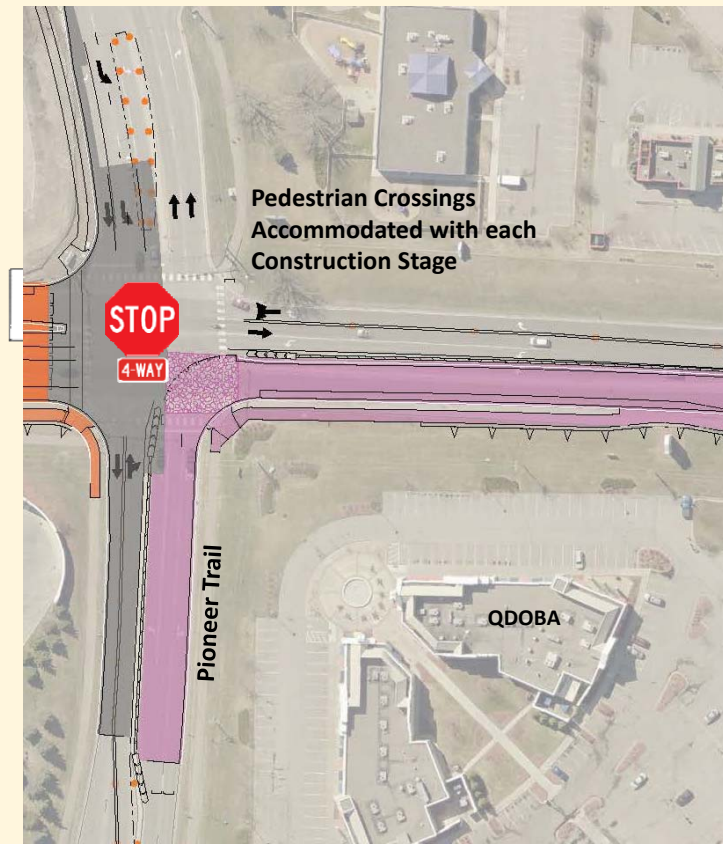
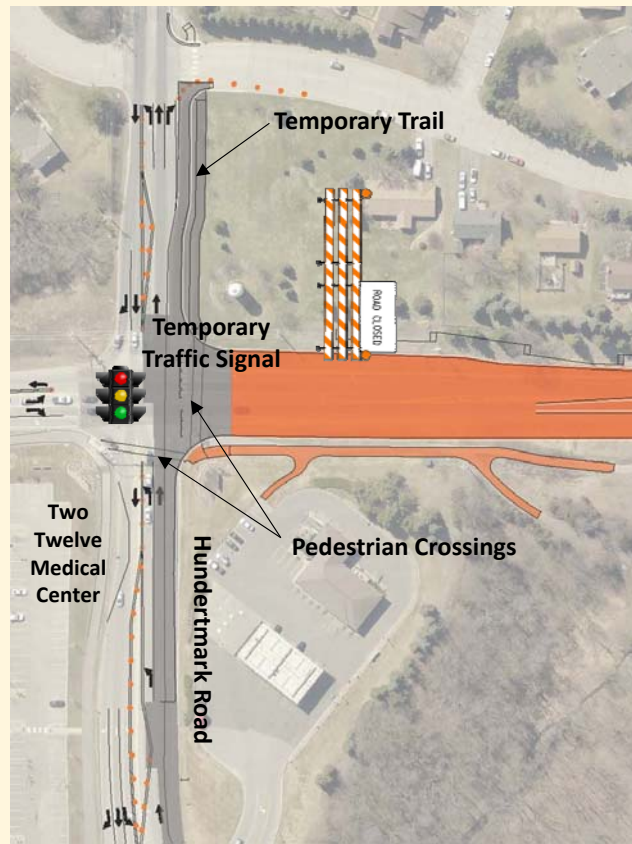
Intersections will be constructed to allow access east/west to businesses and residences at all times.

Construction Stages		Estimated Duration
■ Stage 1		10-12 weeks
■ Stage 2		4 weeks
■ Stage 3		4 weeks
Estimated Construction Duration		18-20 weeks
HIGHWAY 41 CLOSURE		12 weeks



TH 41 Roadway Expansion (US 212 to Pioneer Trail)

Maintained and Temporary Pedestrian Access



TH 41 Roadway Expansion (US 212 to Pioneer Trail)

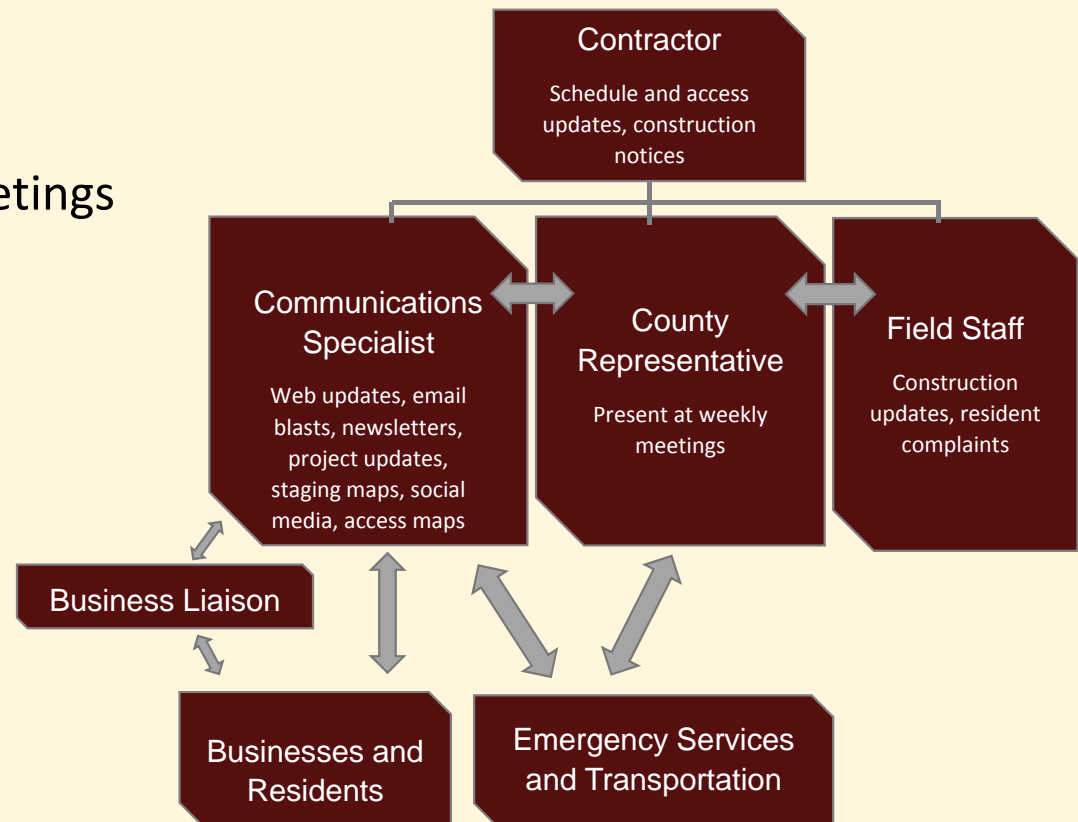
Construction Updates:

- Project Website
- Weekly E-Blasts after Construction Meetings
- Facebook Page
- Twitter Account

Find us on 



Communication Flowchart



TH 41 Roadway Expansion (US 212 to Pioneer Trail)

What's Next?

- Project Bidding and Award – Late Winter
- Open House Prior to Construction - Spring

TH 41 Roadway Expansion (US 212 to Pioneer Trail)

Questions?

TH 41 Roadway Expansion (US 212 to Pioneer Trail)



Project Contacts

Lyndon Robjent, P.E.

Public Works Director / County Engineer

Carver County

P: 952-466-5200

lrobjent@co.carver.mn.us

Chris Chromy, P.E., PTOE

Consulting Project Manager

Bolton & Menk, Inc.

P: 952-890-0509

chrisch@bolton-menk.com

www.bolton-menk.com/41reconstruction

TH41 Roadway Expansion - US 212 to Pioneer Trail • Carver County MN