

Navigating Roundabouts

Motorists

- Slow down when approaching a roundabout. For multi-lane roundabouts, as with any intersection, get into the appropriate lane.
- Yield to pedestrians in the crosswalk. It is the law.
- Yield to vehicles already in the roundabout. Merge into the traffic flow when it is safe.
- Continue through the roundabout until you reach your exit. Do not stop or pass in a roundabout.
- Exit the roundabout immediately if an emergency vehicle approaches, and then pull over. Do not stop in the roundabout.
- Yield to pedestrians in the crosswalk when exiting the roundabout.
- Give large trucks extra space in a roundabout. Large trucks may straddle both lanes while driving through a multi-lane roundabout.

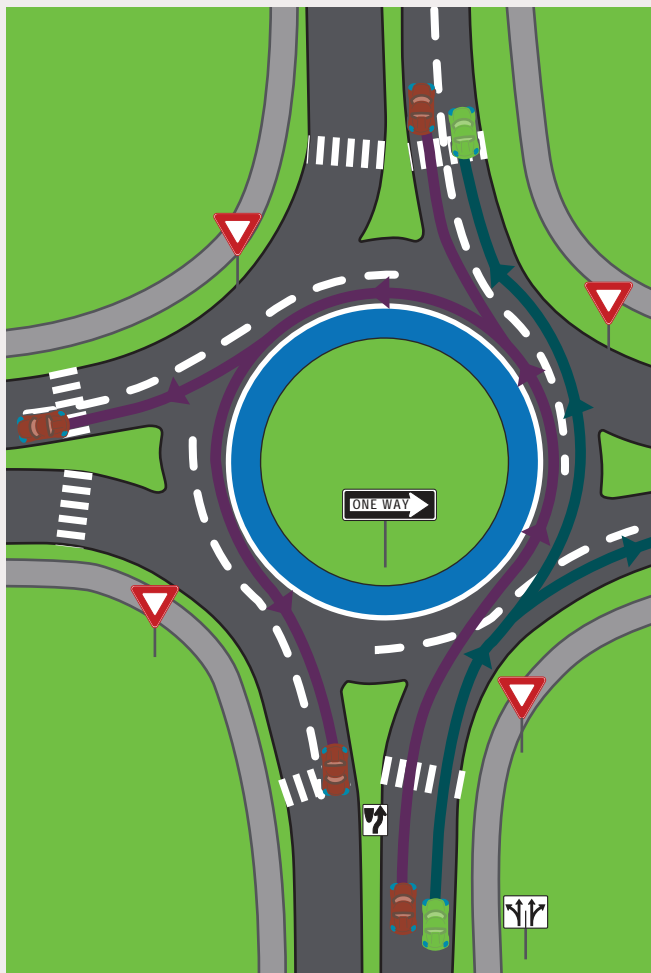
Cyclists

- Ride with traffic inside the roundabout or use the crosswalks appropriately.
- Follow the same rules as vehicles when riding with traffic and yield when entering the roundabout. Since traffic is slower inside the roundabout, cyclists should be able to travel at or near the same speed as motorists, staying in line with the circulating traffic.

Pedestrians

- Cross only at crosswalks and always stay on the designated walkways.
- Never cross to the central island.
- Cross the roundabout one approach at a time. Use the median island as a halfway point where you can check for approaching traffic.

Navigating a Multi-lane Roundabout



Resources

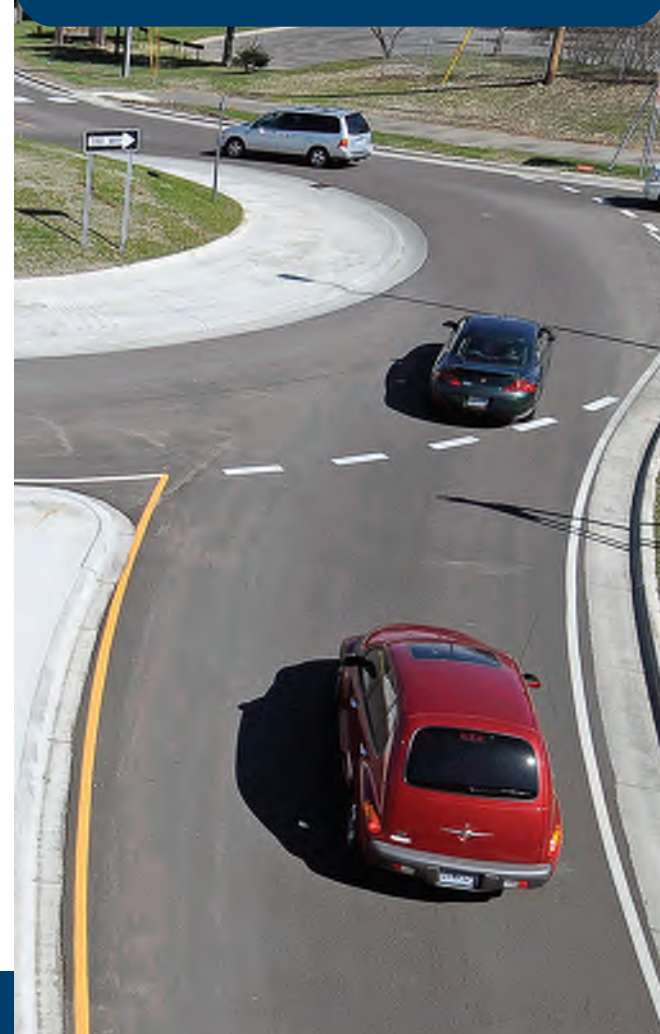
Minnesota Department of Transportation
www.mndot.gov/roundabouts

02/2017



Roundabouts

A Minnesota Guide



How About a Roundabout?

A modern roundabout is a circular intersection where traffic flows around a center island.

Roundabouts are an alternative to traffic signals and stop signs to control traffic. In many situations, they have several advantages over signals and stop signs, including:

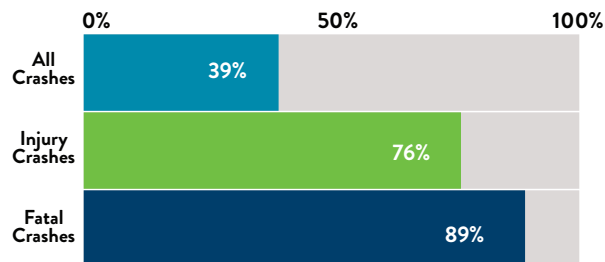
- Fewer injury crashes and fatalities
- Increased pedestrian safety
- Less vehicle delay and pollution

Roundabouts, like all intersections, undergo thorough analysis prior to implementation to determine if it is the appropriate solution.

Safety

Roundabouts can dramatically improve safety when compared to conventional intersections. A study of 23 intersections converted to roundabouts shows a decrease in total crashes by 39 percent, a decrease in injury crashes of 76 percent, and a dramatic 89 percent decrease in fatal crashes. ("Safety Effects of Roundabout Conversions in the U.S.," Insurance Institute for Highway Safety)

Reduction in crashes after conversion to roundabouts (23 intersections)



Features of a Modern Roundabout - Single Lane

