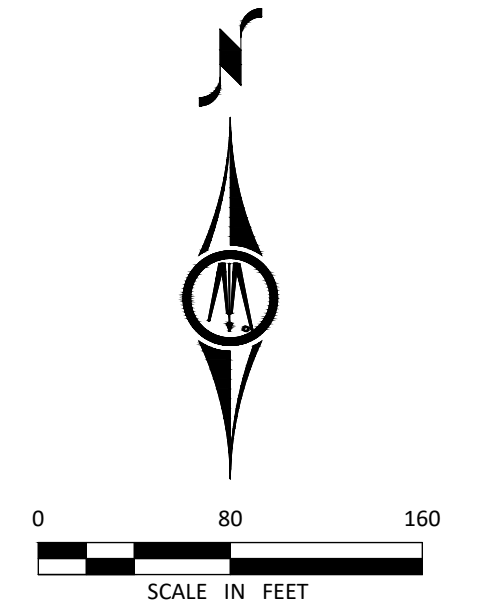
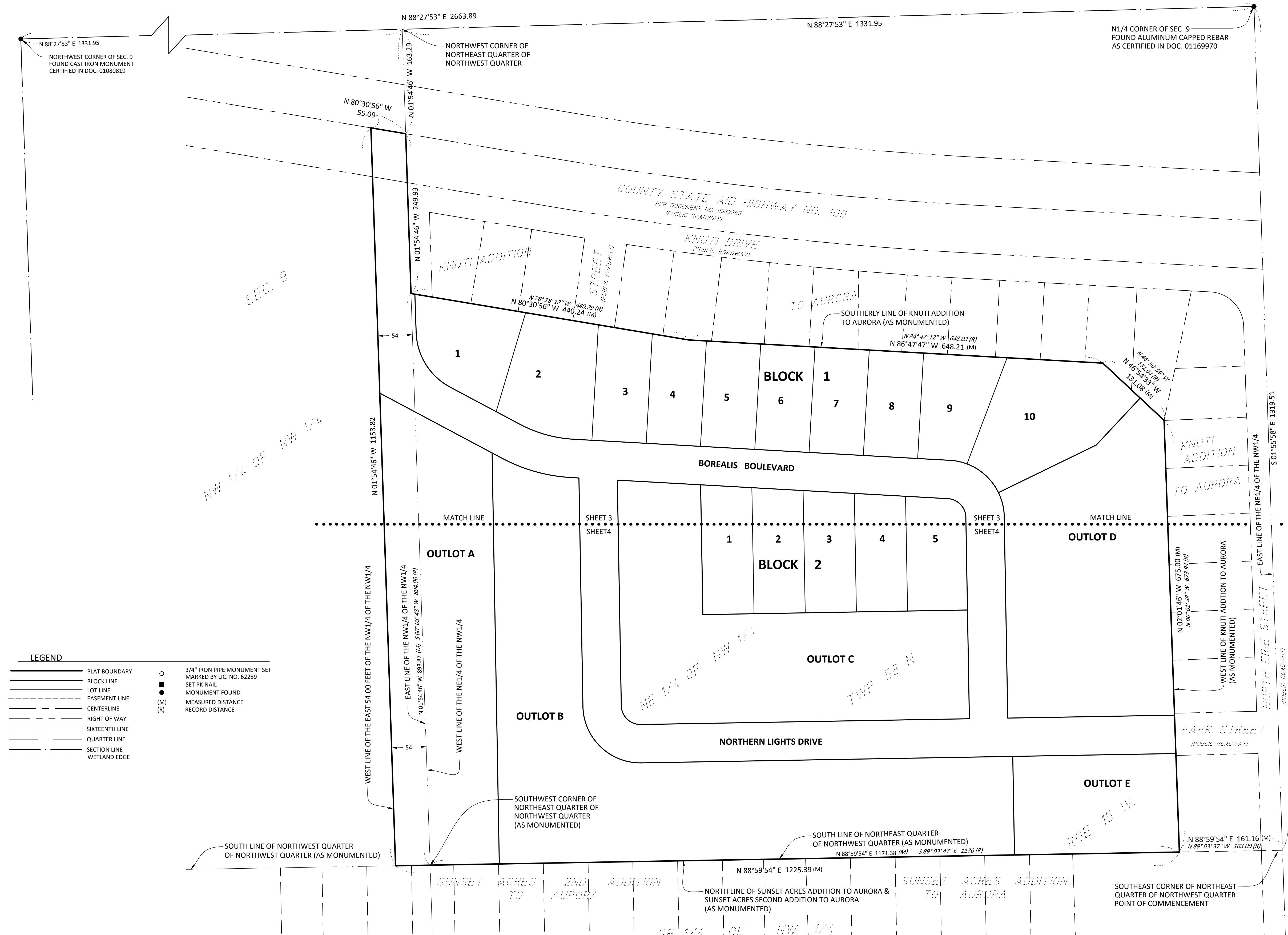


LISLEGARD ADDITION

LOCATED IN THE NORTH HALF OF THE NORTHWEST QUARTER OF SECTION 9,
TOWNSHIP 58 NORTH, RANGE 15 WEST OF THE FOURTH PRINCIPAL MERIDIAN,
ST. LOUIS COUNTY, MINNESOTA



Horizontal Datum: NAD83 (1996 Adj.)
St. Louis County Transverse Mercator
Coordinate System
Basis of Bearing: Bearings are based on
the north line of the Northwest Quarter
of Section 9 which has a measured
bearing of North 88° 27' 53" East.



LEGEND

—	PLAT BOUNDARY	○	3/4" IRON PIPE MONUMENT SET MARKED BY LIC. NO. 62289
—	BLOCK LINE	●	SET PK NAIL
—	LOT LINE	●	MONUMENT FOUND
- - -	EASEMENT LINE	(M)	MEASURED DISTANCE
—	CENTERLINE	(R)	RECORD DISTANCE
- - -	RIGHT OF WAY		
- - -	SIXTEENTH LINE		
- - -	QUARTER LINE		
- - -	SECTION LINE		
- - -	WETLAND EDGE		