



# BROOKLYN BOULEVARD OPEN HOUSE



# WHAT IS *BECOMING BROOKLYN CENTER*?

Becoming Brooklyn Center is a multi-part effort of reenvisioning the future of Brooklyn Center, being led by the City of Brooklyn Center.

## Values



**Affordability:** housing, small business space, and community events



**Diversity and inclusivity:** multicultural and welcoming environment



**Health and wellness:** recreation, active living, public safety, and health



**Fiscal responsibility:** using city resources to leverage private investment



**Flexibility:** responsive to emerging opportunities as they align with goals



**Local benefit:** ensuring that city residents are direct beneficiaries



**Community pride:** creating a space that locals are proud to share



**Environmental sustainability:** supporting long term environmental health



**Counteracting displacement:** ensuring project does not price out residents

## Becoming Brooklyn Center Timeline



# BECOMING BROOKLYN CENTER

## GUIDING PRINCIPLES

Four guiding principles emerged from prior public engagement that reinforce a sense of community pride in Brooklyn Center.



Create a vibrant and distinctive destinations for the community and the region



Consider sustainability in design and development



Embrace the growing diversity of the community



Produce places that bring the community together

# BROOKLYN BOULEVARD LAND USE STUDY

As part of *Becoming Brooklyn Center*, the City is reimagining the current form and function of Brooklyn Boulevard's development, while proposing a series of actionable improvements to current and future land use along the Boulevard.

## Goals



## Land Use Study Timeline



# WHAT IS A HEALTHY CORRIDOR?

**HEALTHY CORRIDORS** are places that prioritize and promote the health of those who live, work, and visit the corridor.

## Why Focus on Health & Wellness?

There has been a growing focus across the US and locally on how the physical shape we give our communities, shapes us. As rates of largely preventable chronic diseases continue to rise, a renewed commitment is emerging towards creating health-promoting communities. This involves the design and management of places that promote physical activity, social interactions, safe mobility, access to well-paying jobs, accessible housing, and healthy affordable food options.

These are features that all people deserve to have, and is a major focus for the Brooklyn Boulevard Study.

## FEATURES OF A HEALTHY CORRIDOR

Opportunities to be Physically Active	Usage of Sustainable Building Materials	Provide Spaces to Socialize and Gather	Inclusion of Plants and Green Space	Accessible and Well-Paying Jobs
Infrastructure that Allows for Multimodal Mobility	Easy Connections to Other Parts of the City	Places to Purchase Affordable and Healthy Food	Accessible Housing in Price and Design	Design and Land-Use that Supports Community Needs





# HEALTHY CORRIDOR: SOCIAL DETERMINANTS OF HEALTH

**Social Determinants of Health** are the external conditions in which people are born, grow up, work, live, and age. These conditions, shown in the table on the right, collectively impact a wide range of health and quality-of-life outcomes.

For communities that have faced historic disparities in these factors, such as substandard housing, lack of affordable healthy foods, or poor economic opportunities, health outcomes tend to be lower as a result.

Recognizing the history of health disparities in the US and Brooklyn Center, the Brooklyn Boulevard Land Use Study is committed to identifying outcomes that promote the health of everyone. The project team is therefore seeking solutions that will positively address the factors that influence health, towards the goal of creating a corridor that promotes the health of all people.

Economic Stability	Neighborhood and Physical Environment	Education	Food	Community and Social Context	Health Care System
Employment	Housing	Literacy	Hunger	Social integration	Health coverage
Income	Transportation	Language	Access to healthy options	Support systems	Provider availability
Expenses	Safety	Early childhood education		Community engagement	Provider linguistic and cultural competency
Debt	Parks	Vocational training		Discrimination	Quality of care
Medical bills	Playgrounds	Higher education			
Support	Walkability				

## Health Outcomes

Mortality, Morbidity, Life Expectancy, Health Care Expenditures, Health Status, Functional Limitations

Chart Source: cdc.gov

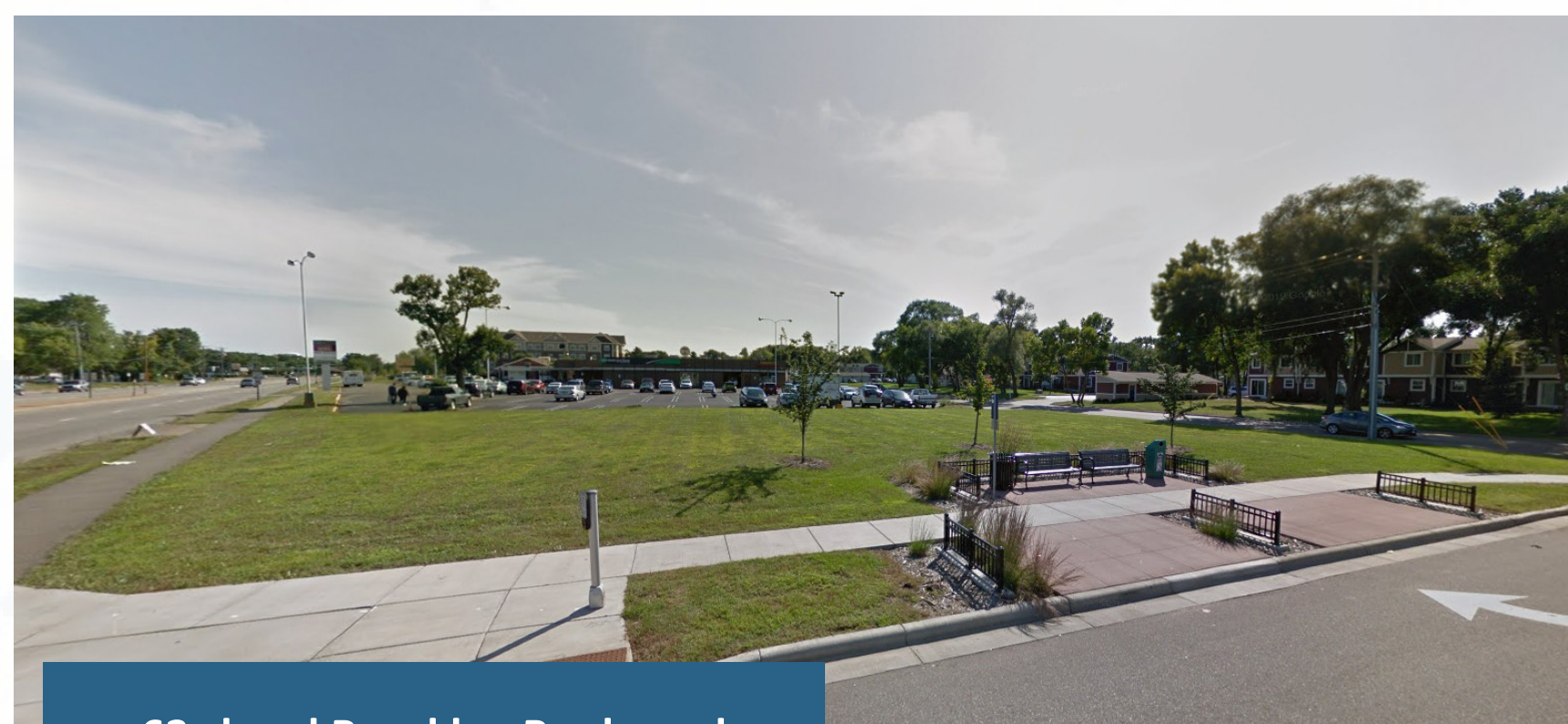
# WE NEED YOUR HELP!

## Share Your Thoughts

As the City begins a new Land Use Study, we need your help to **envision what a healthy corridor that benefits the community and adjacent neighborhoods could look like**. The following stations will ask you questions, and give you a chance to talk with the project team.

For this study, we are focusing on the way **that the land along Brooklyn Boulevard is currently used, and how it might be improved in the future**. An additional and supportive study is being done for the roadway itself, with open houses scheduled for Spring 2020. More information can be found at <http://www.cityofbrooklyncenter.org/index.aspx?nid=1273>

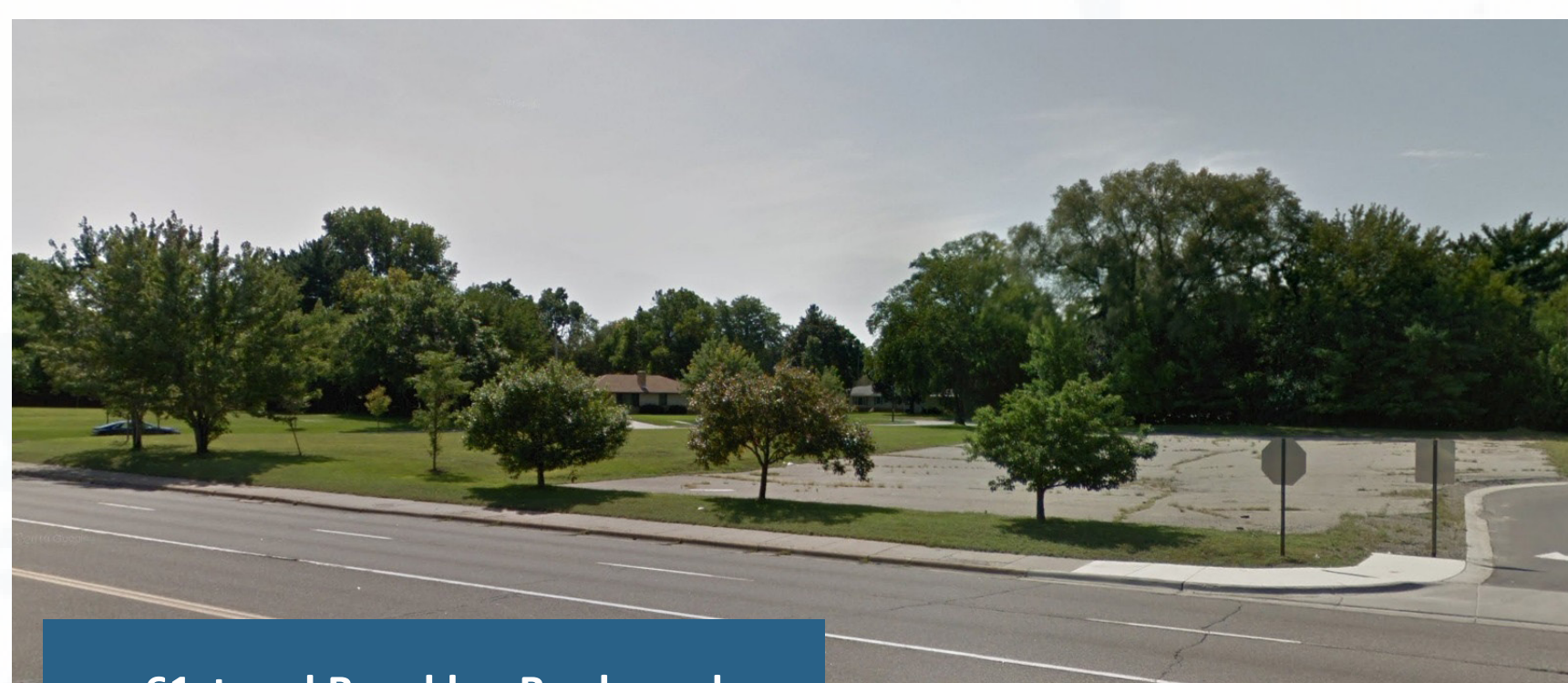
*Your feedback will be used to inform project goals, priorities, and deliverables as the City and its partners outline the future of Brooklyn Boulevard.*



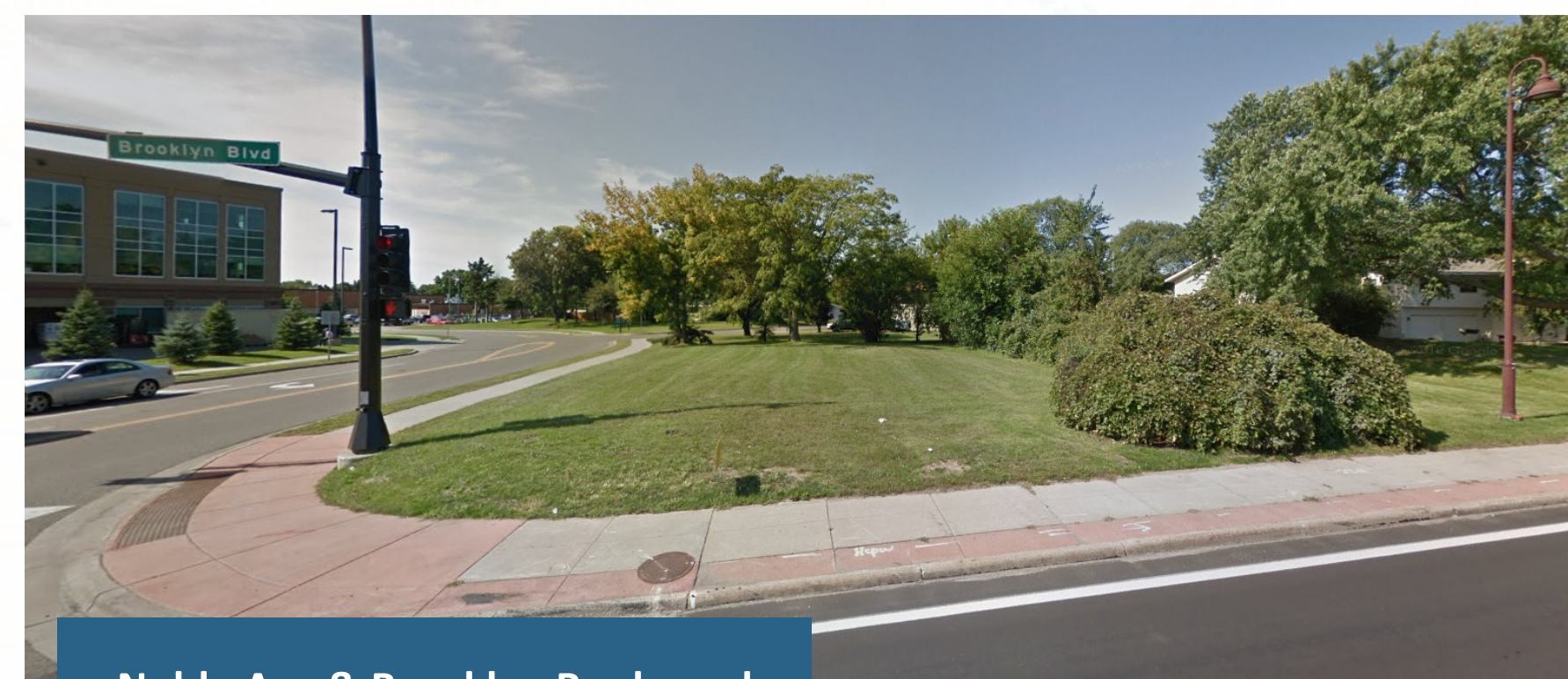
63rd and Brooklyn Boulevard



63rd and Brooklyn Boulevard

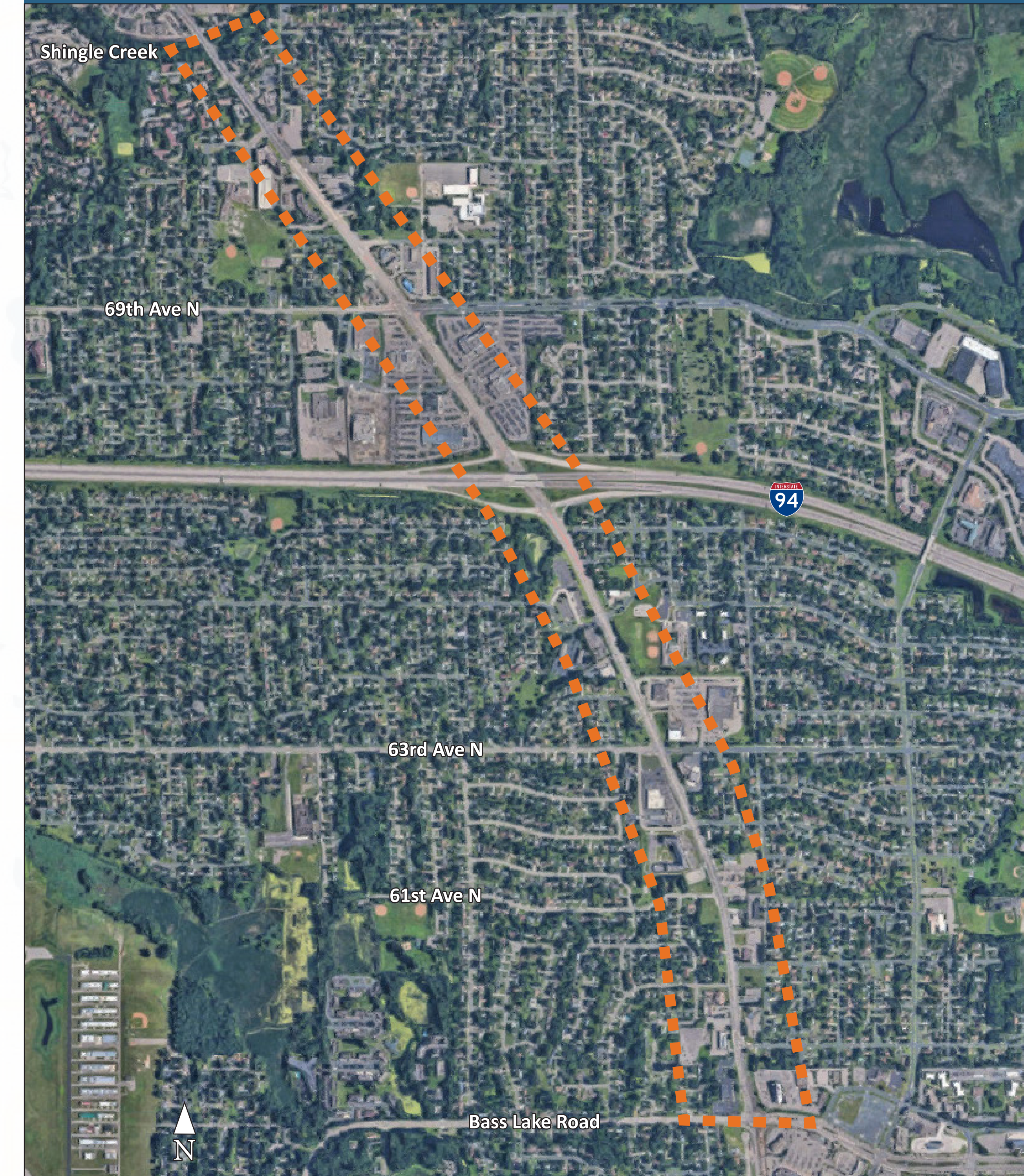


61st and Brooklyn Boulevard



Noble Ave & Brooklyn Boulevard

## FOCUS AREA



# HOUSING

The Land Use Study is looking at opportunities to add new housing at key locations along the Corridor, particularly within city-owned lots. The below housing types appear to be some of the feasible choices the city could pursue. When these opportunities arise, what types of housing would you like to see along Brooklyn Boulevard?



COURTYARD

YES

NO



BUNGALOW

YES

NO



MODERN

YES

NO

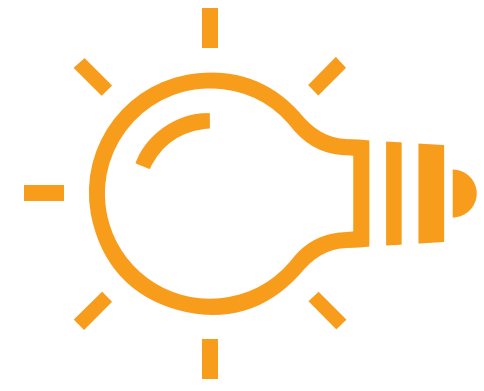


ROW

YES

NO

OTHERS? WRITE OR DRAW YOUR IDEAS



## Inspiration Board

Incorporating health-promoting design features, like those shown below, are important to creating a healthy and vibrant corridor. Using the dot stickers, vote for the top two features you would like to see **along Brooklyn Boulevard**.

OPEN SPACE



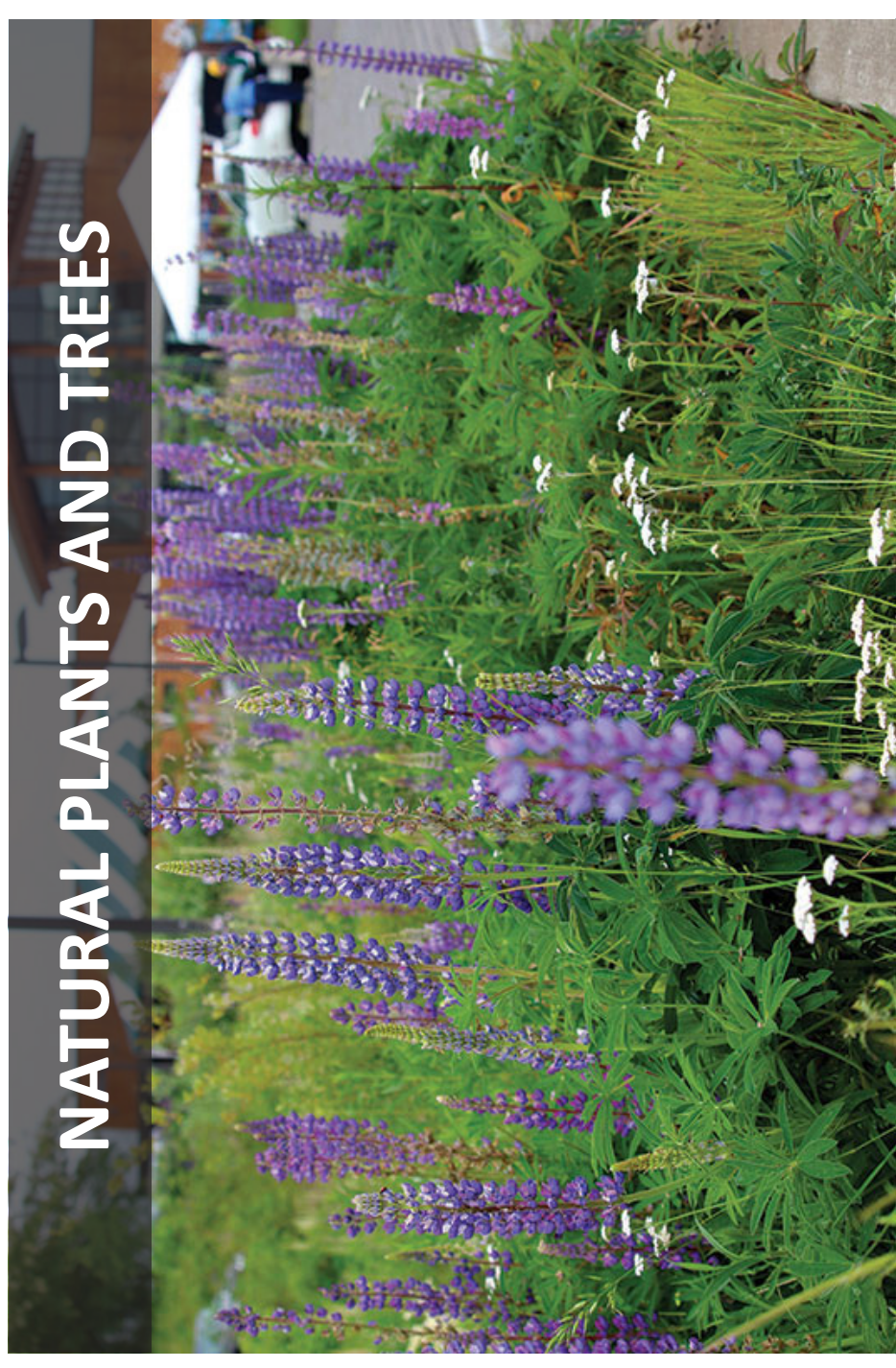
VOTE HERE

PUBLIC ART



VOTE HERE

NATURAL PLANTS AND TREES



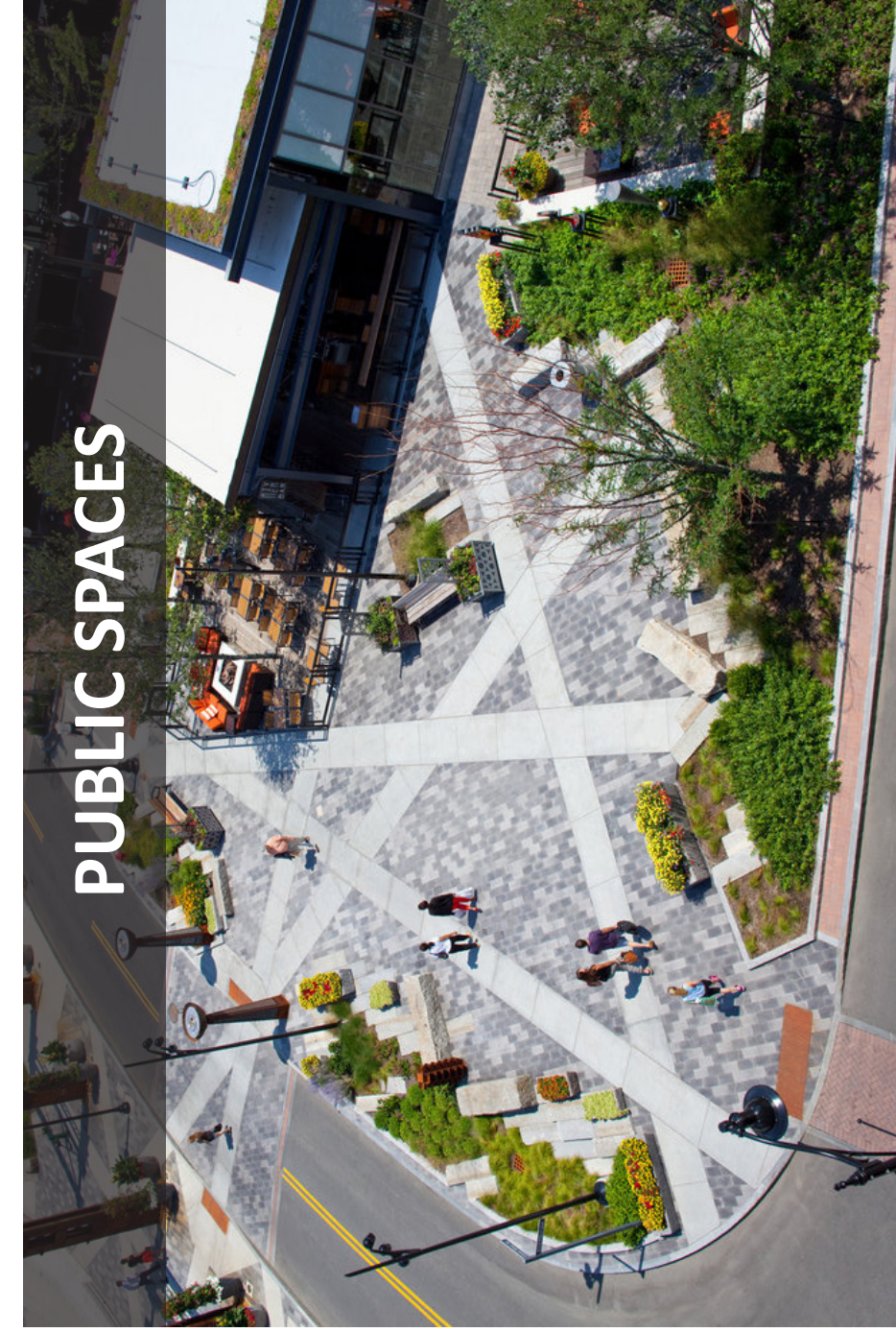
VOTE HERE

SAFE BIKE INFRASTRUCTURE



VOTE HERE

PUBLIC SPACES



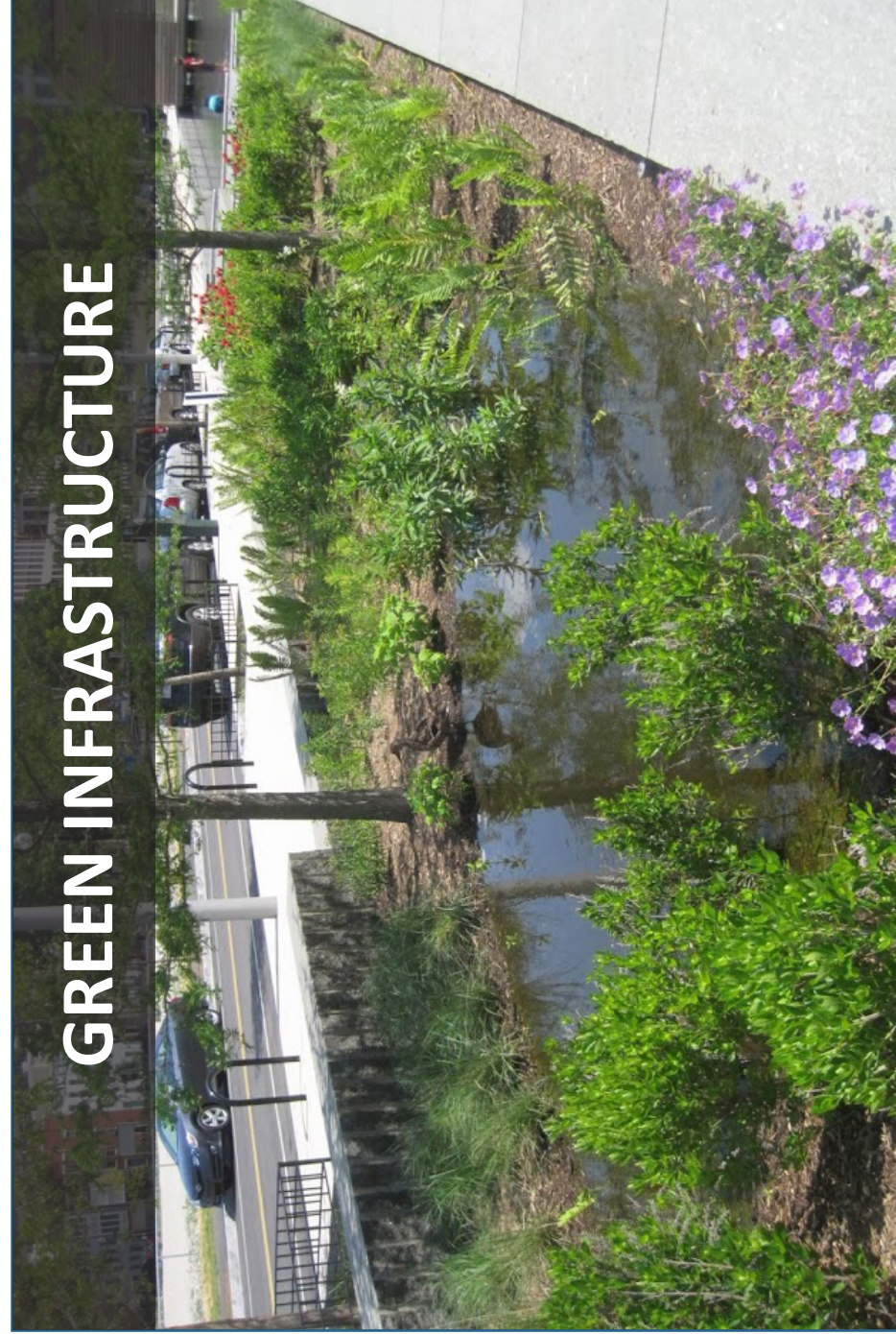
VOTE HERE

SIDEWALKS AND TRAILS



VOTE HERE

GREEN INFRASTRUCTURE



VOTE HERE

SAFE PEDESTRIAN CROSSINGS



VOTE HERE

WRITE YOUR OWN IDEA!

# INSPIRATION IMAGES

COURTYARD HOUSING



STORMWATER INFRASTRUCTURE



SMALL SCALE OFFICE & COMMERCIAL



PUBLIC SPACES



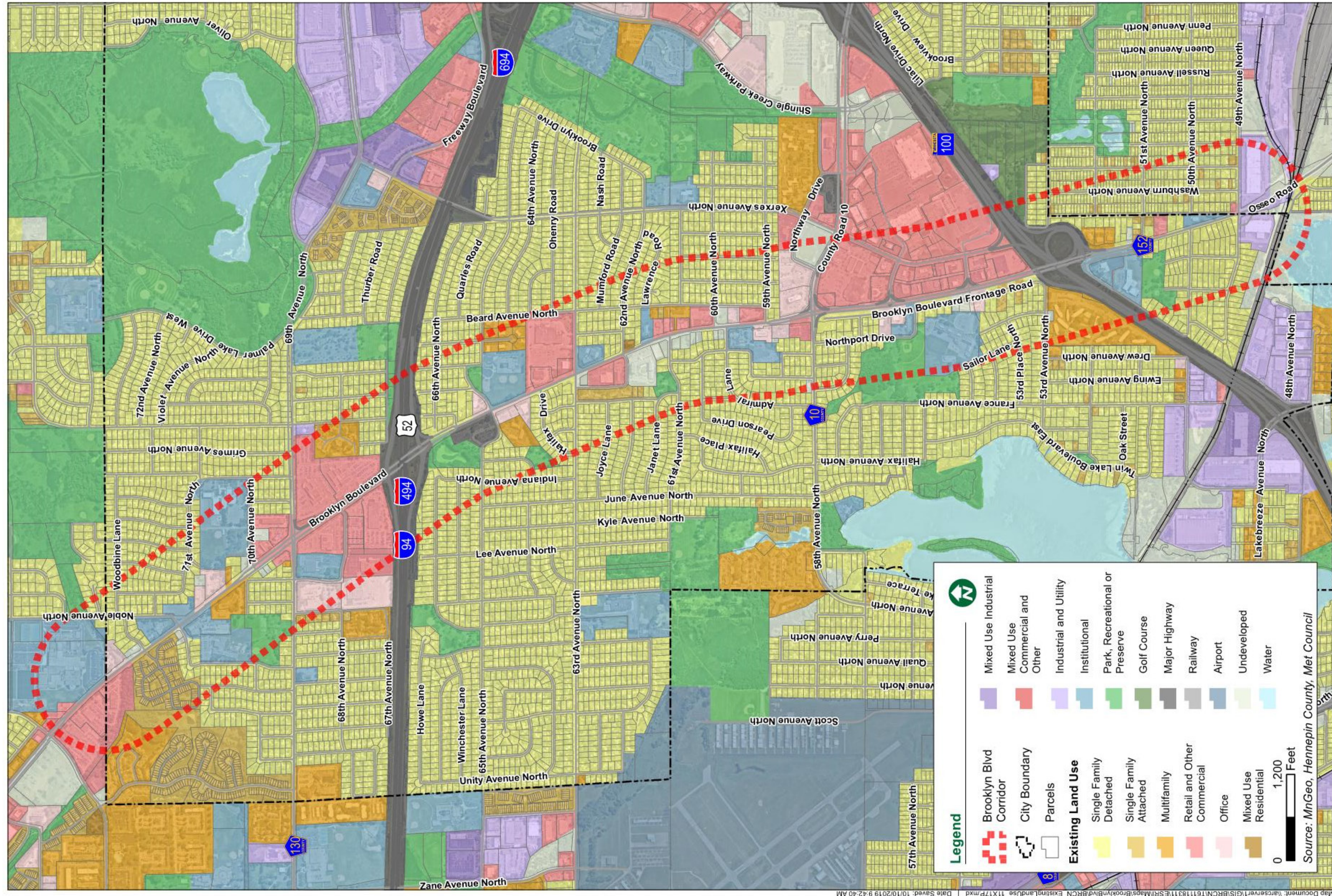
PEDESTRIAN INFRASTRUCTURE



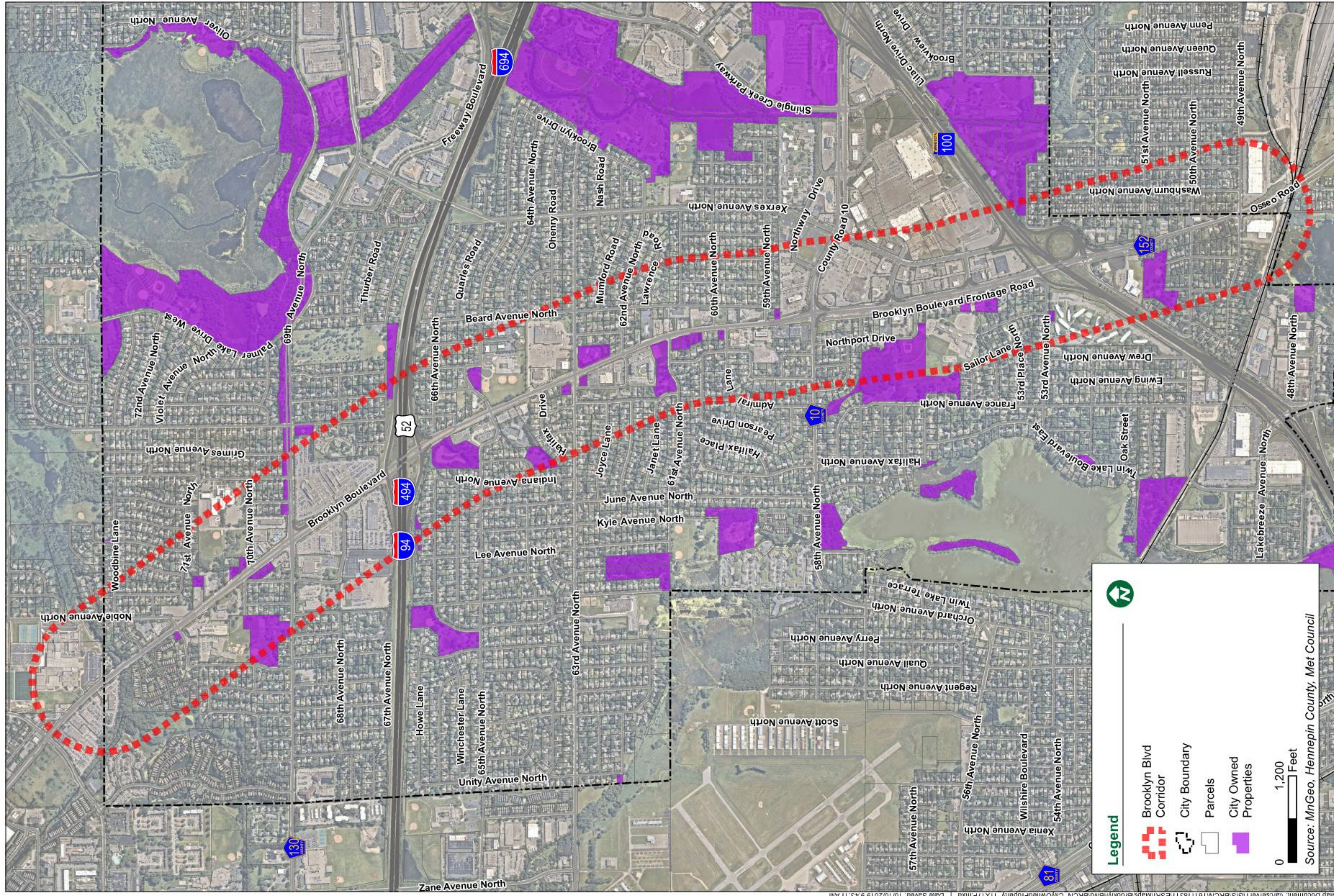
ROW HOUSING



Below is the current land use around Brooklyn Boulevard. As part of the Study, the City is exploring new rules and zoning to guide future uses.



The below map shows city-owned land around and along Brooklyn Boulevard.  
City land along the corridor generally provides the easiest  
initial development opportunities.



A key consideration for the Study is maintaining and building upon transportation connectivity. The project team is committed to the importance of pedestrian, bicycle, and transit connecting people to destinations along the Boulevard.

