

2026 Pavement Management Project

Phase 2 Construction Notice – Streets and Curb Replacement Area

June 17, 2026

Construction Starts June 29	Duration 5-6 weeks	Description of Work Utility, Curb, Pavement
---------------------------------------	------------------------------	---

Anticipated Construction Timeline *(subject to change)*

1. **June 29-July 1:** Spot utility replacement.
2. **July 8:** Temporary mailbox installation.
3. **July 9-10:** Saw cutting for concrete removals.
4. **July 9-15:** Remove street pavement, concrete curb, and driveway ends. ***Homeowners are responsible to remove any irrigation, invisible dog fence, or landscaping that you would like to save prior to removals.***
5. **July 16-21:** Concrete curb, driveways, and mailbox pads. Please note that new concrete cannot be driven over until the contractor removes ribbon across driveway (about 5 days after placement). The contractor will not warranty concrete that has been driven on prior to the contractor removing ribbon. Hydrant pads will also be constructed as part of this project. This involves disturbing the area between the back of curb and the street side of the hydrant, with a width of approximately 8 feet.
6. **July 22-July 27:** Prepare gravel for paving, pave first of two layers of pavement. asphalt driveway patching on paved driveways, raise existing structures within the street to the final pavement height, install topsoil and seed. Pavement can be driven on about 30 minutes after placement.
7. **Later Date – TBD:** The top layer of pavement will be placed. Pavement can be driven on about 30 minutes after placement. A future notice will be provided prior to placement with additional details.

Protecting your sprinkler systems, invisible fence, and landscaping

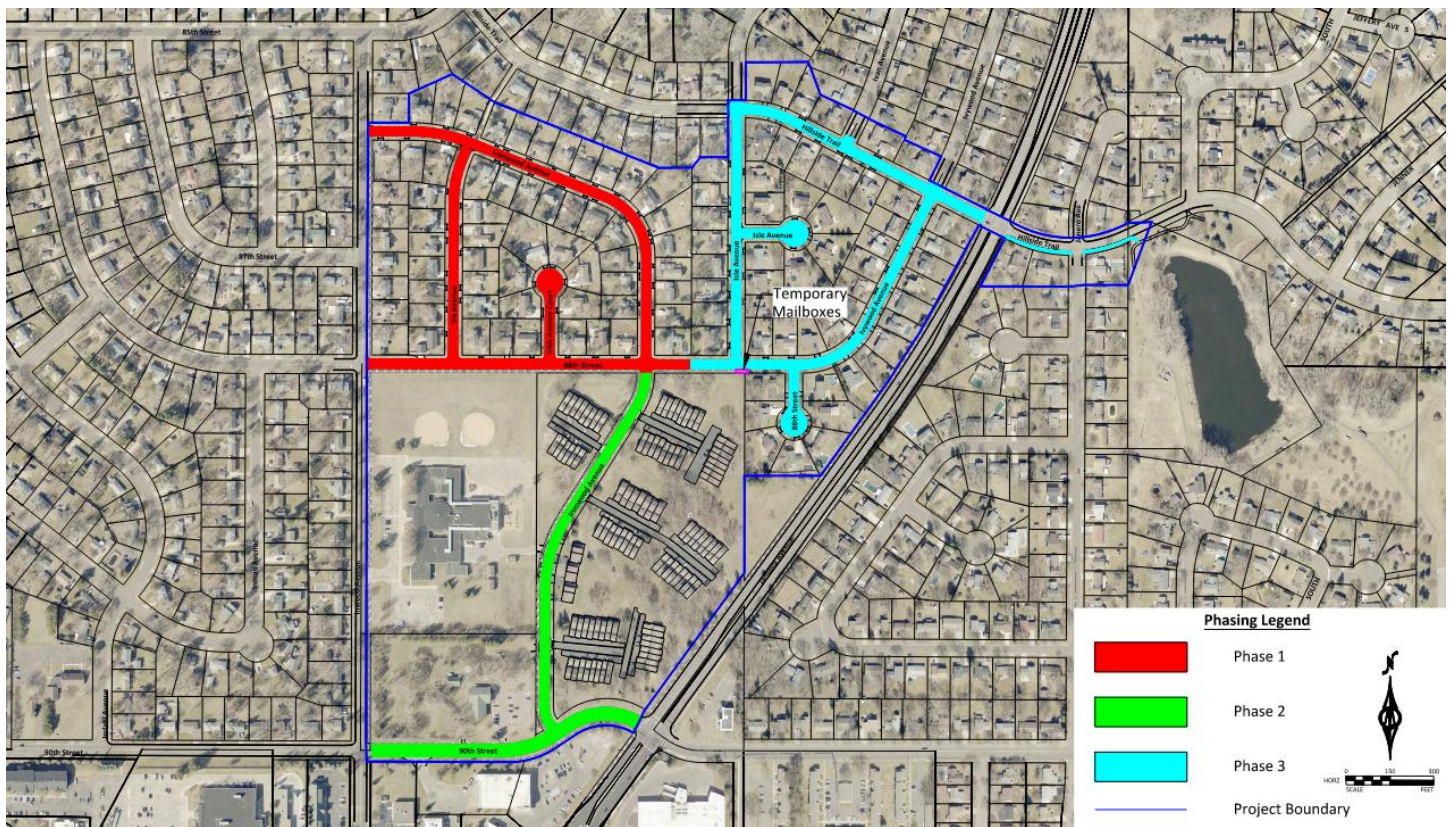
If you wish to protect your private features from damage during construction, please temporarily remove them from the City right of way area that will be impacted by construction (about 3-5ft behind the curb). Sprinkler heads can be disconnected, and the hose can be dug up and pulled back. Spot curb areas will have white areas painted on curb marked for removal. Please protect features within this area. Please protect features behind the entire length of curb in full-curb removal areas.

Any damage to private features in the right of way will not be repaired, replaced, or altered by the city or the contractor.

Street and driveway parking during construction023

Parking will be allowed on streets throughout construction between 7:00PM and 7:00AM.

Construction operation	Where to park
Concrete Placement	<ul style="list-style-type: none"> When concrete work is performed, a 5-day minimum curing time is required from the time of placement. This will restrict access; however, residents will be allowed to park directly in front of their homes from 7:00 PM to 7:00 AM. During the day when contractors are working please park outside of the phase one area. The contractor will place ribbon across your driveway until it is ok to drive over the new concrete. <i>If you require special accommodations, please contact the project hotline</i>
Pavement/Concrete Removal and Grading/Paving Operations	<ul style="list-style-type: none"> Park in your driveway. There may be short durations of 30-60 min when removals or paving occurring in front of your home causes temporary loss of access so plan accordingly.



Garbage and mail service

Temporary mailboxes will be provided for impacted mailboxes in Phase 1 at the location noted above. Garbage service will remain the same with garbage pickup occurring on same day as it currently does throughout construction.

Stay Informed

If you have any questions or concerns, please contact the project hotline or project email.

 **Project Email:**
CGPavementManagement@bolton-menk.com

 **Project Website:**
<https://clients.bolton-menk.com/cg2026pmp/>

 **Project Phone Number:**
952-836-7114