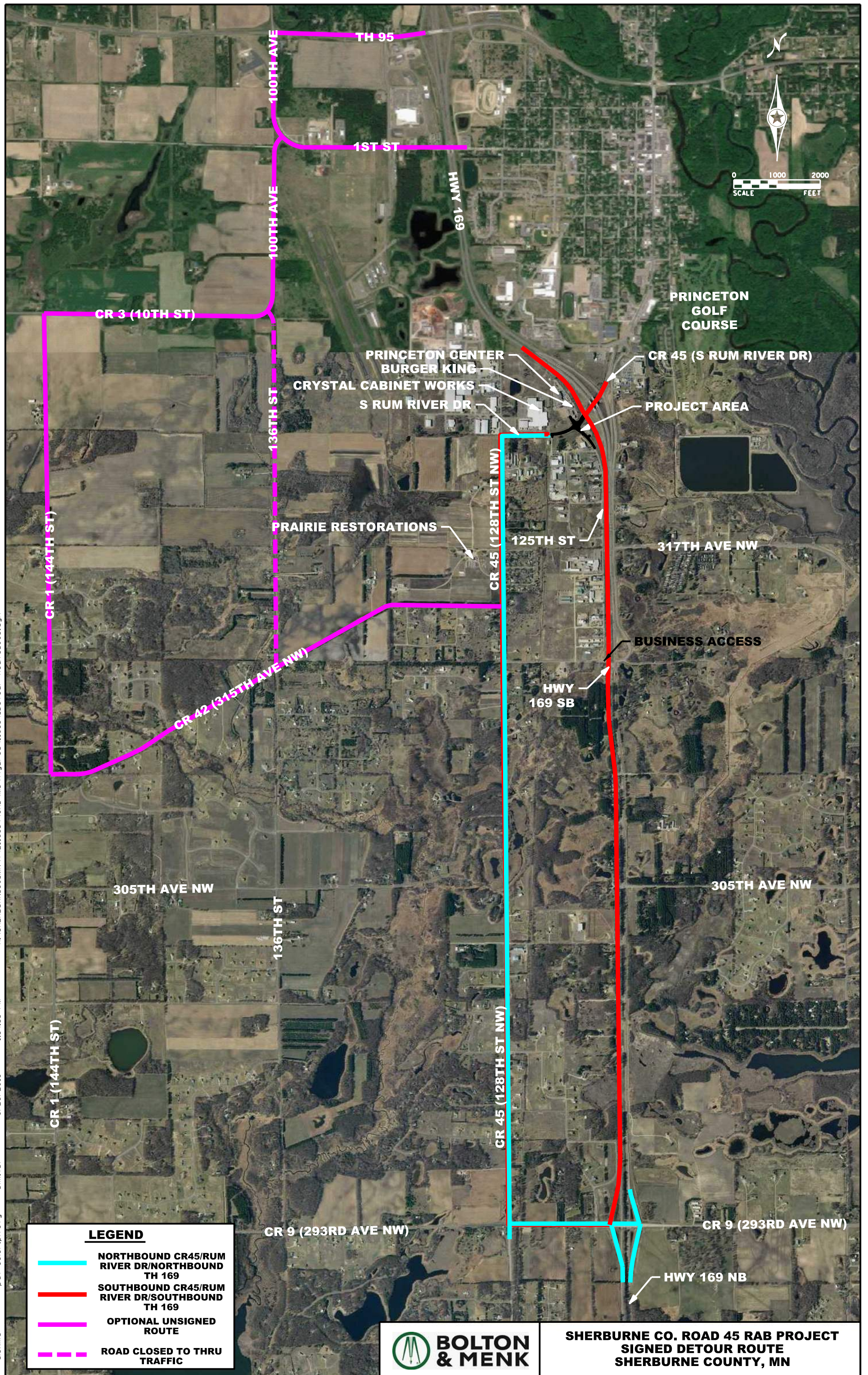


alexma pdf-color-pitcfcg bmi.tbl 6/26/2019 1:34:53 PM H:\SHERBURN_CO_MN\42116834\CAD\MS\Figures\116834_Detour_Route_003.dgn



LEGEND	
	NORTHBOUND CR45/RUM RIVER DR/NORTHBOUND TH 169
	SOUTHBOUND CR45/RUM RIVER DR/SOUTHBOUND TH 169
	OPTIONAL UNSIGNED ROUTE
	ROAD CLOSED TO THRU TRAFFIC



**SHERBURNE CO. ROAD 45 RAB PROJECT
SIGNED DETOUR ROUTE
SHERBURNE COUNTY, MN**