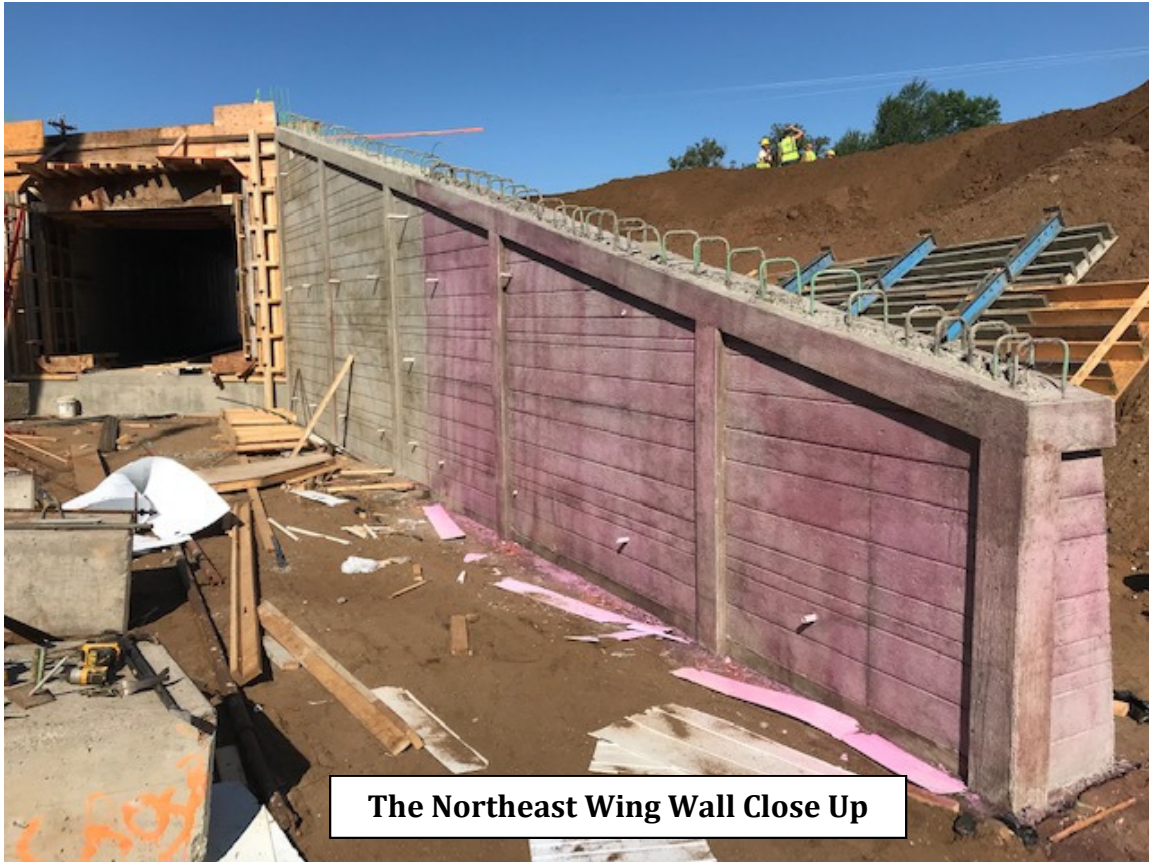


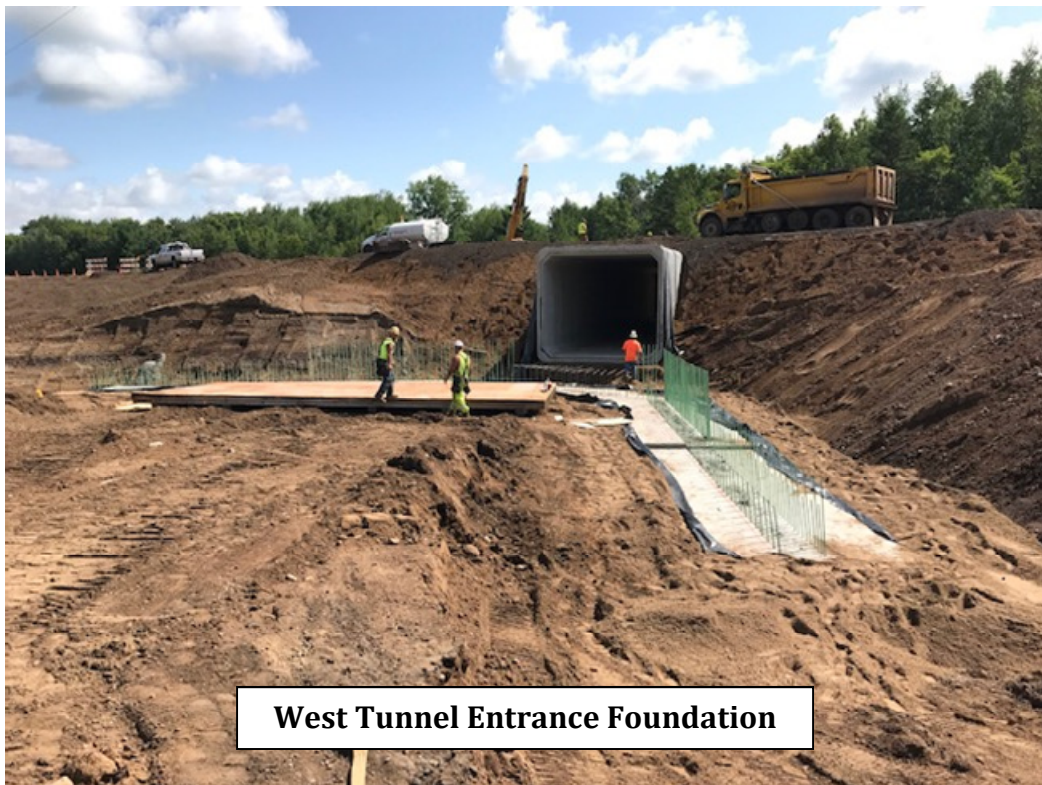
August 7, 2019

Last week construction progressed with multiple construction operations going on at the same time. The contractor set the remaining box culvert sections for the tunnel at the beginning last week. Once the box culvert was completely installed into place a subcontractor placed a rubber water proofing membrane over the top and the sides of the tunnel. This rubber membrane will help to prevent any water from getting into the tunnel which will allow trail users dry passage as they cross under the highway. Overall site excavation and grading took place mostly on the west side of the highway. The new trail alignment and a storm water pond on the west side of the highway is beginning to take shape. A lot of concrete work also took place for the eastern tunnel entrance and the west tunnel entrance foundation. The east tunnel entrance is now complete and all efforts will be now focused on the western entrance. The pink color of the wall in the photo is a curing agent that is applied to surface of the concrete. The dye is added to the cure to ensure that proper application coverage is achieved and in time this dye will fade. These concrete entrances will later be stained light brown in color. Moving forward the contractor will continue to rebuild the road as the project's completion date approaches.





The Northeast Wing Wall Close Up



West Tunnel Entrance Foundation