



INTERLACHEN PROJECT NEWSLETTER



Project Schedule



Access & Parking



Safety



Future Newsletters & Communication



Contact Info



Map



PROJECT SCHEDULE

The contractor's phased construction schedule is proposed as shown in the map on the last page of this newsletter. The following is an overview of the upcoming phases of the project schedule.

Week of 8/3/2020

- Phase 1A
 - Restoration work behind the curb will continue including sod installation.
- Phase 1B
 - Concrete curb & gutter and driveways will be installed later in the week.
- Phase 1C
 - Utility work will continue on Meadowbrook.
- Phase 1D
 - Street grading will wrap up and concrete curb & gutter will be installed.
- Phase 1E
 - Construction will begin with temp water installation and pavement removals later in the week.

Later in August

- Phase 1A
 - Restoration work will be complete
- Phase 1B
 - The first layer of asphalt will be paved and restoration behind the curb will begin.
- Phase 1C
 - Street grading will occur, and concrete curb & gutter will be installed.
 - The first layer of asphalt will be paved in Late August or Early September.

- Phase 1D
 - The road will be paved and opened back up to traffic.
 - Restoration behind the curb will occur with new sod.
- Phase 1E
 - Construction will continue with utility installation.
- Phase 1F
 - Construction will begin with temp water installation and pavement removals towards the end of the month.
- Phase 2A
 - Tree removals will occur for any trees previously identified for removal. A ribbon will be placed around trees being removed within the next week or so.

September

- Phase 1B
 - Restoration work will be complete.
- Phase 1C
 - The first layer of asphalt will be paved, and restoration work will wrap up at the end of the month.
- Phase 1E
 - Utility work will wrap up and street grading will begin in preparation for concrete curb & gutter and asphalt paving.
- Phase 1F
 - Construction will continue with utility installation and street grading will begin at the end of the month.
- Phase 2A
 - Construction will begin with pavement removals and utility installation.

ACCESS & PARKING



The construction process results in a great product at its completion, but can test one's patience along its course. While the negatives of construction are in many ways unavoidable, the City aims to reduce the burden through working with the City's contractor to minimize disruption, routine mailings and other communication, and on-site assistance for residents.

When the street and utilities are under construction, the contractor will need all of the space in the street possible. Therefore, parking will not be allowed on the project area streets under construction during the working hours. Access to driveways will be provided as much as possible. Temporary access restrictions should be anticipated during the work day. The project team understands the need for access to each property, therefore the streets will be temporarily restored at the end of each work day and access to private driveways will generally be available each night.

During street & utility reconstruction, access conditions are usually most challenging after rainfall. Heavy traffic over muddy streets makes conditions worse. Residents will be encouraged to drive on paved roadways whenever that alternative exists.

Typical working hours for the project will be 7 a.m. to 7 p.m., Monday through Friday, and 8 a.m. to 6 p.m. on Saturdays if necessary. No work is allowed on Sundays or holidays.

SAFETY



The contractor will do everything they can to make the project area safe for residents. However, residents should be aware of their surroundings when walking or driving near construction equipment. The City asks that residents keep their distance from construction equipment in use and utility trenches. There are also materials that can cause harm if caution is not used such as hot asphalt pavement immediately after being placed. Please keep children and pets away from construction activity and open trenches as they might not be aware of the dangers. If you see anything that you feel is unsafe, please do not hesitate to call Josh Hrabec.



FUTURE NEWSLETTERS & COMMUNICATION

During construction, the following communications methods will be made available to residents to keep the neighborhood informed of the project happenings:

1. Newsletters distributed on a monthly basis
2. Project website 'construction updates' on a weekly basis, providing a summary of what was completed the current week and what the contractor's plan is for the next week
3. Email & Text Message updates on a weekly basis
4. Printed notices delivered to homes at up to a daily basis for property-specific coordination items – temporary (3 – 6 hr) water shutdowns, concrete placement in driveways, etc.

The Project Team has talked with many residents about opting out of paper notices as much as possible to rely on mostly e-notices. If you have not been contacted about this yet and would like to opt out of paper notices as much as possible, please email Madeline.Lunzer@bolton-menk.com with your name, street address, preferred email address, and phone # if you would also like to sign up for text message updates.

5. Residents will be able to contact the Project Help Line to respond to questions or issues needing immediate attention



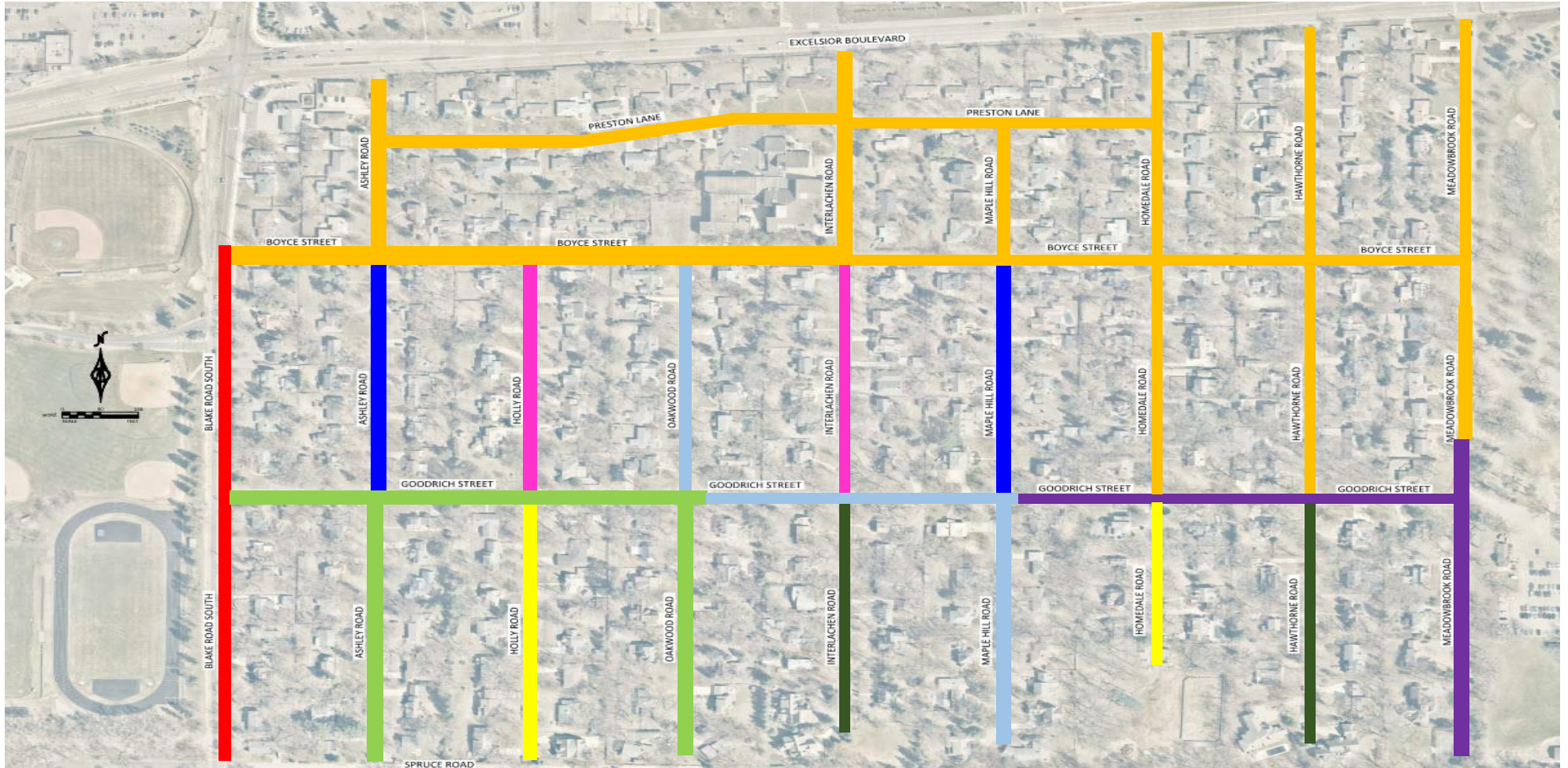
CONTACT AND WEBSITE INFO

Project Help Line (612) 619-7772

Website: The website will be updated approximately weekly with the latest project info throughout construction, and residents can sign-up for weekly email and/or text updates through the website.

www.Hopkins-Interlachen.com

PROJECT PHASING MAP



PHASE 1A
(EARLY MAY – EARLY AUGUST)

PHASE 1B
(EARLY JUNE – EARLY SEPTEMBER)

PHASE 1C
(EARLY JULY – LATE SEPTEMBER)

PHASE 1D
(LATE JULY – LATE AUGUST)

PHASE 1E
(EARLY AUGUST – OCTOBER)

PHASE 1F
(LATE AUGUST – NOVEMBER)

PHASE 2A
(MID-SEPTEMBER – NOVEMBER)

PHASE 2B
(FALL 2020/SPRING 2021 – Weather Dependent)

PHASE 3
(2021 CONSTRUCTION – SCHEDULE TBD)

*Note: Dates are subject to change due to weather, contractor’s schedule, and unforeseen conditions.