



## INTERLACHEN PROJECT NEWSLETTER



Project  
Schedule



Access &  
Parking



Safety



Future  
Newsletters &  
Communication



Contact Info



Map



### PROJECT SCHEDULE

The contractor's phased construction schedule is proposed as shown in the map on the last page of this newsletter. The following is an overview of the upcoming phases of the project schedule.

#### Week of 8/31/2020

- Phase 1A
  - The newly laid sod has a warranty of 30 days from installation. Notices were delivered with the warranty dates and details for sod care. Please notify the project team of any deficiencies in the sod, including dead sod, during the first 30 days. After the first 30 days, sod care is no longer the responsibility of the Contractor and will become the responsibility of the Homeowner to maintain. It is encouraged that residents water sod when needed, even during the first 30 days, to ensure proper growth and health of sod.
- Phase 1B
  - Restoration work will continue behind the curb with new sod.
- Phase 1C
  - The first layer of asphalt will be paved.
- Phase 1D
  - The final layer of asphalt will be paved.
- Phase 1E
  - Street grading will begin.
- Phase 1F
  - Utility installation will continue.
- Phase 2A
  - Temporary water will be set up in preparation for utility construction.

#### September

- Phase 1B
  - Restoration work will be complete and the newly laid sod will be under warranty for 30 days.
- Phase 1C
  - Restoration work will wrap up at the end of the month.
- Phase 1E
  - The first layer of asphalt will be paved and restoration work will begin.
- Phase 1F
  - Utility installation will wrap up and street grading will begin. Concrete curb & gutter will be installed later in the month.
- Phase 2A
  - Construction will begin with pavement removals the week of September 7<sup>th</sup> and utility installation will follow shortly after.

#### October

- Phase 1C
  - Restoration work will be complete and the newly laid sod will be under warranty for 30 days.
- Phase 1E
  - Restoration work will wrap up with sod.
- Phase 1F
  - The first layer of asphalt will be paved and restoration work will begin.
- Phase 2A
  - Street grading will begin and concrete curb & gutter will be installed.

**\*Phase 2B schedule will be confirmed by the next Newsletter (End of September), whether it will be started this fall or next spring**

**ACCESS & PARKING**

**For residents interested in sealcoating their asphalt driveways with a private contractor, please wait at least one season after the City's contractor, Northwest, paves the new asphalt patch behind the concrete apron.**

The construction process results in a great product at its completion, but can test one's patience along its course. While the negatives of construction are in many ways unavoidable, the City aims to reduce the burden through working with the City's contractor to minimize disruption, routine mailings and other communication, and on-site assistance for residents.

When the street and utilities are under construction, the contractor will need all of the space in the street possible. Therefore, parking will not be allowed on the project area streets under construction during the working hours. Access to driveways will be provided as much as possible. Temporary access restrictions should be anticipated during the work day. The project team understands the need for access to each property, therefore the streets will be temporarily restored at the end of each work day and access to private driveways will generally be available each night.

During street & utility reconstruction, access conditions are usually most challenging after rainfall. Heavy traffic over muddy streets makes conditions worse. Residents will be encouraged to drive on paved roadways whenever that alternative exists.

Typical working hours for the project will be 7 a.m. to 7 p.m., Monday through Friday, and 8 a.m. to 6 p.m. on Saturdays if necessary. No work is allowed on Sundays or holidays.

**SAFETY**

The contractor will do everything they can to make the project area safe for residents. However, residents should be aware of their surroundings when walking or driving near construction equipment. The City asks that residents keep their distance from construction equipment in use and utility trenches. There are also materials that can cause harm if caution is not used such as hot asphalt pavement immediately after being placed. Please keep children and pets away from construction activity and open trenches as they might not be aware of the dangers. If you see anything that you feel is unsafe, please do not hesitate to call Josh Hrabe.

**FUTURE NEWSLETTERS & COMMUNICATION**

During construction, the following communications methods will be made available to residents to keep the neighborhood informed of the project happenings:

1. Newsletters distributed on a monthly basis
2. Project website 'construction updates' on a weekly basis, providing a summary of what was completed the current week and what the contractor's plan is for the next week
3. Email & Text Message updates on a weekly basis
4. Printed notices delivered to homes at up to a daily basis for property-specific coordination items – temporary (3 – 6 hr) water shutdowns, concrete placement in driveways, etc.

**The Project Team has talked with many residents about opting out of paper notices as much as possible to rely on mostly e-notices. If you have not been contacted about this yet and would like to opt out of paper notices as much as possible, please email [Madeline.Lunzer@bolton-menk.com](mailto:Madeline.Lunzer@bolton-menk.com) with your name, street address, preferred email address, and phone # if you would also like to sign up for text message updates.**

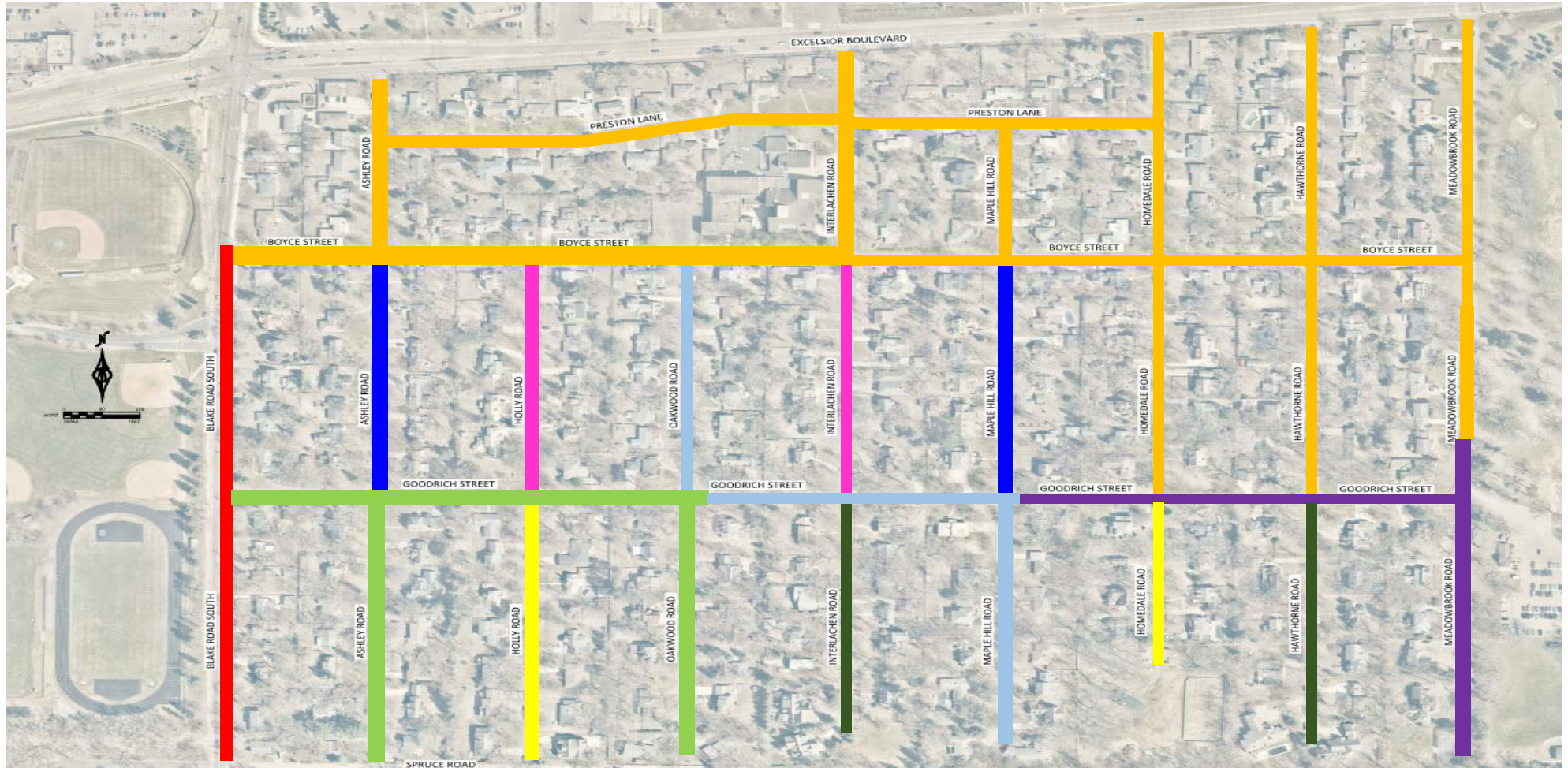
5. Residents will be able to contact the Project Help Line to respond to questions or issues needing immediate attention

**CONTACT AND WEBSITE INFO****Project Help Line (612) 619-7772**

**Website:** The website will be updated approximately weekly with the latest project info throughout construction, and residents can sign-up for weekly email and/or text updates through the website.

**[www.Hopkins-Interlachen.com](http://www.Hopkins-Interlachen.com)**

# PROJECT PHASING MAP



■ PHASE 1A  
 (EARLY MAY – LATE AUGUST)  
■ PHASE 1B  
 (EARLY JUNE – EARLY SEPTEMBER)  
■ PHASE 1C  
 (EARLY JULY – LATE SEPTEMBER)

■ PHASE 1D  
 (LATE JULY – LATE AUGUST)  
■ PHASE 1E  
 (EARLY AUGUST – EARLY OCTOBER)  
■ PHASE 1F  
 (LATE AUGUST – LATE OCTOBER)

■ PHASE 2A  
 (MID-SEPTEMBER – EARLY NOVEMBER)  
■ PHASE 2B  
 (FALL 2020/SPRING 2021 – Weather Dependent)  
■ PHASE 3  
 (2021 CONSTRUCTION – SCHEDULE TBD)

\*Note: Dates are subject to change due to weather, contractor's schedule, and unforeseen conditions.