



INTERLACHEN PROJECT NEWSLETTER



Project
Schedule



Safety



Contact Info



Map

PROJECT SCHEDULE



The contractor's phased construction schedule is proposed as shown in the map on the last page of this newsletter. The following is an overview of the upcoming phases of the project schedule.

Week of 9/28/20

- Phase 1E and Phase 1F
 - Concrete driveway aprons will be poured early in the week.
- Phase 2A
 - Street grading will begin on Interlachen and Holly.

October

- Phases 1A – 1C
 - Trees will be planted.
 - Clean-up work will continue.
 - The final layer of asphalt will be paved.
- Phase 1C
 - The final layer of asphalt will be paved during the week of October 5th on the 200 block of Meadowbrook and on Goodrich between Meadowbrook and Hawthorne.
- Phase 1E and Phase 1F
 - The first layer of asphalt will be paved during the week of October 5th and restoration work will begin.
- Phase 2A
 - Street grading will wrap up and concrete curb and gutter will be installed.
 - The first layer of asphalt will be paved later in the month.

Late October/Early November

- Phase 1E and Phase 1F
 - The final layer of asphalt will be paved.

- Phase 2A
 - Restoration work will wrap up and the final layer of asphalt will be paved.

Phase 2B will not begin until Spring 2021. Additional information on the schedule for Phase 2B and Phase 3 will be available prior to the start of construction in the Spring.



SAFETY

The contractor will do everything they can to make the project area safe for residents. However, residents should be aware of their surroundings when walking or driving near construction equipment. The City asks that residents keep their distance from construction equipment in use and utility trenches. There are also materials that can cause harm if caution is not used such as hot asphalt pavement immediately after being placed. Please keep children and pets away from construction activity and open trenches as they might not be aware of the dangers. If you see anything that you feel is unsafe, please do not hesitate to call Josh Hrabec or the Project Help Line.



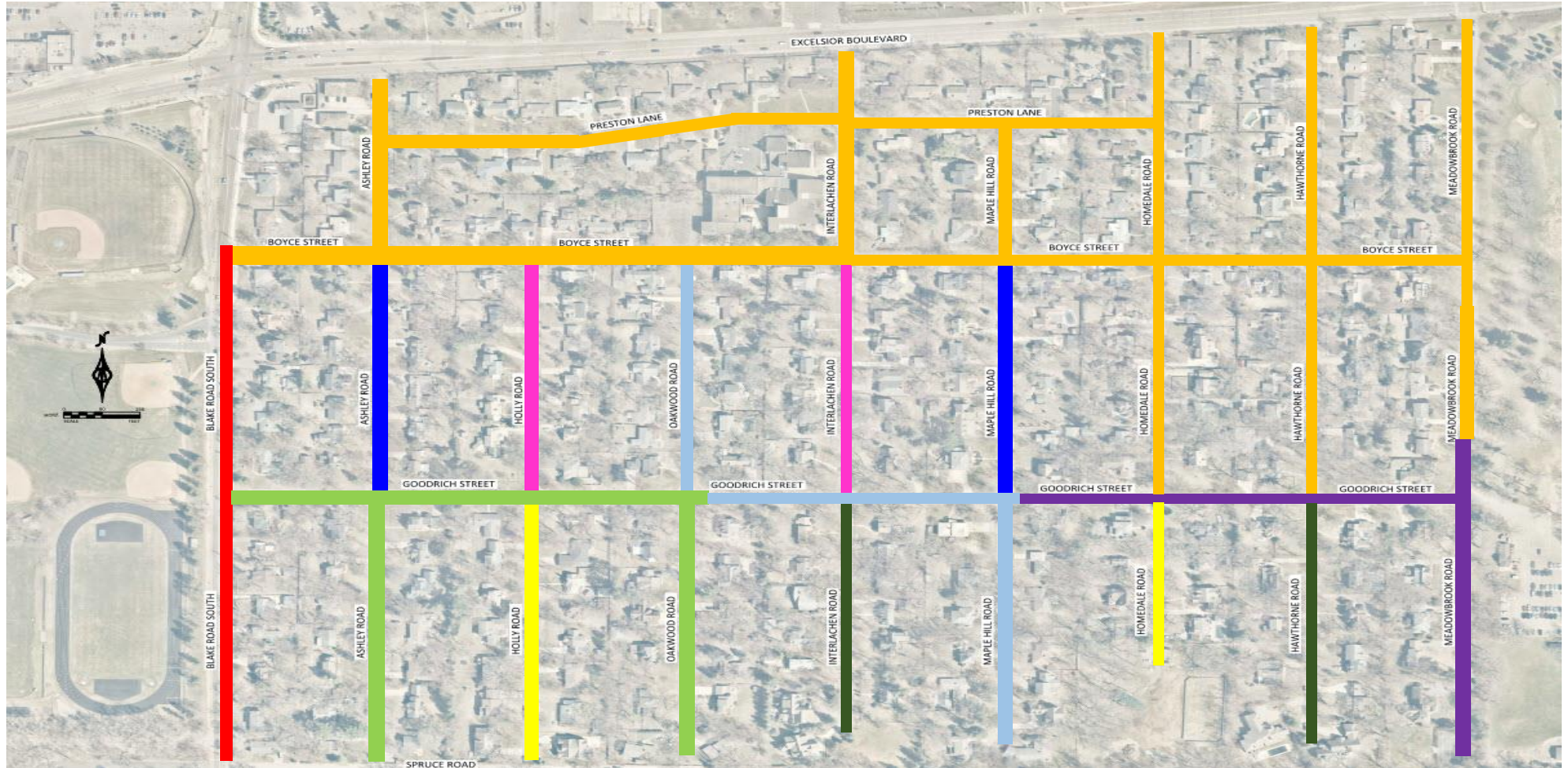
CONTACT AND WEBSITE INFO

Project Help Line (612) 619-7772

Website: The website will be updated approximately weekly with the latest project info throughout construction, and residents can sign-up for weekly email and/or text updates through the website.

www.Hopkins-Interlachen.com

PROJECT PHASING MAP



■ PHASE 1A
 (SUBSTANTIALLY COMPLETE)
■ PHASE 1B
 (SUBSTANTIALLY COMPLETE)
■ PHASE 1C
 (SUBSTANTIALLY COMPLETE)

■ PHASE 1D
 (SUBSTANTIALLY COMPLETE)
■ PHASE 1E
 (EARLY AUGUST – MID-OCTOBER)
■ PHASE 1F
 (LATE AUGUST – MID-OCTOBER)

■ PHASE 2A
 (MID-SEPTEMBER – EARLY NOVEMBER)
■ PHASE 2B
 (SPRING 2021 – SCHEDULE TBD)
■ PHASE 3
 (2021 CONSTRUCTION – SCHEDULE TBD)

*Note: Dates are subject to change due to weather, contractor's schedule, and unforeseen conditions.