



## INTERLACHEN PROJECT NEWSLETTER



Project  
Schedule



Safety



Contact Info



Map

### PROJECT SCHEDULE



#### Saturday, October 31

- The final layer of asphalt will be paved on the following streets:
  - 200 Block of Hawthorne Rd
  - 200 Block of Homedale Rd
  - 200 Block of Maple Hill Rd
  - 200 Block of Interlachen Rd
  - Goodrich St from Hawthorne to Interlachen
  - Possibly the 100 Block of Interlachen

#### Week of 11/2/20

**\*Please do not push out leaves into the road until the day before your scheduled leaf pickup to allow for paving to finish on your block\***

- On **Monday, November 2**, the final layer of asphalt will be paved on the following streets:
  - 200 Block of Oakwood Rd
  - 200 Block of Holly Rd
  - 200 Block of Ashley Rd
  - Goodrich St from Interlachen to Blake
  - Possibly the 100 Block of Holly
- **Phase 2A (100 Blocks of Holly and Interlachen)**
  - The final paving on will occur 10/31 for Interlachen and 11/2 for Holly if time allows in the workday.
  - If it does not, paving will occur later in the week.

#### Later in November

- Phase 1E, 1F, and 2A
  - **The installation of sod will likely not occur this year due to the early snow accumulations and freezing temperatures.** The City and project team are watching weather conditions, but 2020's early heavy snowfall puts at question the quality of sod that could be placed. Ground conditions at sod farms are currently snow covered and frost has penetrated the ground. During most years, sod

could still go down at this time, but this year it appears that placing sod next spring (rather than frozen sod this fall) will result in a better long term product, which is the greater priority.

- **The placement of sod on the remaining phases (1E/1F/2A) is planned for Spring 2021.** Temporary mulch will be installed this fall on any yards without sod to prevent erosion.



### SAFETY

The contractor will do everything they can to make the project area safe for residents. However, residents should be aware of their surroundings when walking or driving near construction equipment. **With Saturday being Halloween and paving scheduled for that day, the Project Team asks that residents keep children and pets away from construction activity and the paving operations as they might not be aware of the dangers.** Please take the time to walk an extra block or two around the construction activity if feasible. The Contractor will also be extra cautious knowing this is a day for higher pedestrian traffic. If you see anything that you feel is unsafe, please do not hesitate to call Josh Hrabe or the Project Help Line.



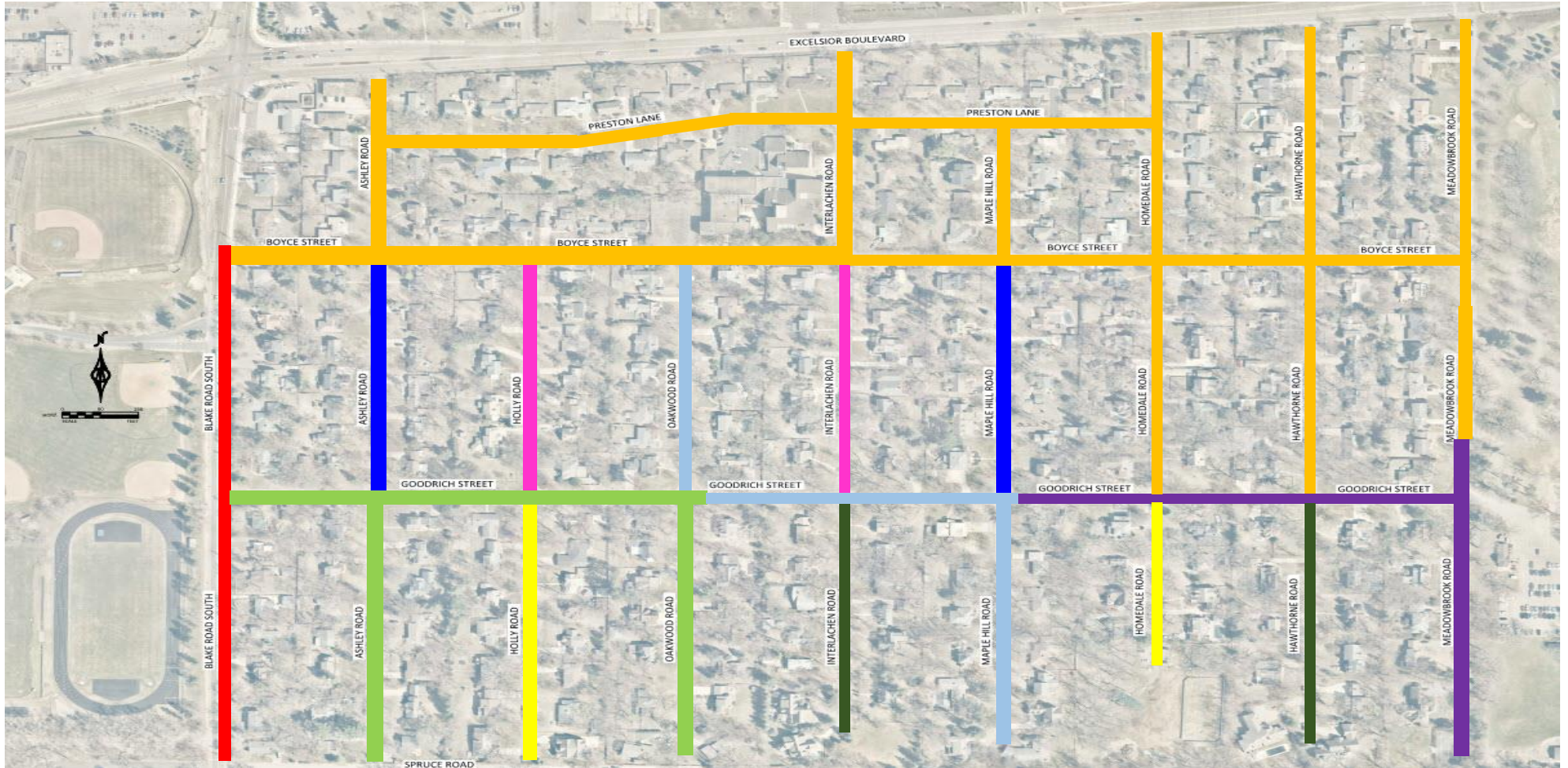
### CONTACT AND WEBSITE INFO

**Project Help Line (612) 619-7772**

**Website:** The website will be updated approximately weekly with the latest project info throughout construction, and residents can sign-up for weekly email and/or text updates through the website.

**[www.Hopkins-Interlachen.com](http://www.Hopkins-Interlachen.com)**

**PROJECT PHASING MAP**



**PHASE 1A**  
(SUBSTANTIALLY COMPLETE)

**PHASE 1B**  
(SUBSTANTIALLY COMPLETE)

**PHASE 1C**  
(SUBSTANTIALLY COMPLETE)

**PHASE 1D**  
(SUBSTANTIALLY COMPLETE)

**PHASE 1E**  
(EARLY AUGUST – EARLY NOVEMBER)

**PHASE 1F**  
(LATE AUGUST – EARLY NOVEMBER)

**PHASE 2A**  
(MID-SEPTEMBER – MID-NOVEMBER)

**PHASE 2B**  
(SPRING 2021 – SCHEDULE TBD)

**PHASE 3**  
(2021 CONSTRUCTION – SCHEDULE TBD)

\*Note: Dates are subject to change due to weather, contractor’s schedule, and unforeseen conditions.