



Real People. Real Solutions.

## CONSTRUCTION NEWSLETTER



Assessments

Project  
Schedule

Construction

Access &  
Parking

Safety



Contact

Map &  
Phasing

### \$ SPECIAL ASSESSMENTS

The final interest rate for the Special Assessments has been determined. Payments can be made with interest between June 29 and November 29, 2019 before going on property taxes. The interest rate is 4.5937%. Questions regarding special assessments can be directed to the special assessment clerk, Melanie Ortiz at 952-548-6310.

### PROJECT SCHEDULE

A phased construction schedule is proposed as shown in the map on the last page of this newsletter. Recently, restoration work began on Tyler Ave N, sidewalk work began along Van Buren Ave N, concrete curb & gutter was installed on Hiawatha Ave, and utility work wrapped up on the east end Cambridge St (Stage 4A). The following is an overview of the upcoming project schedule:

#### Early September

- Turf restoration will be complete on Tyler Ave N and part of Lake St NE (Stage 2).
- Turf restoration will begin on Hiawatha Ave (Stage 1) and Van Buren Ave N (Stage 3).
- The first layer of asphalt will be paved on Hiawatha Ave (Stage 3).
- Gravel base will be installed on Cambridge St (Stage 4A).
- Utility work will wrap up on Cambridge St (Stage 4B) with watermain and storm sewer installation.

- The bridge on Cambridge St (Stage 4B) will be closed to traffic in both directions starting the week of September 9<sup>th</sup> to resurface the bridge. This work is anticipated to be complete in mid-October. During this time, access will be maintained to local Cambridge St businesses from Blake Rd and a detour will remain in place for Van Buren Ave apartment traffic.

#### Later in September

- Turf restoration will be complete on Hiawatha Ave (Stage 1) and Van Buren Ave N (Stage 3).
- Turf restoration will begin on Hiawatha Ave (Stage 3).
- Concrete curb & gutter will be poured on Cambridge St (Stages 4A & 4B).
- Bridge work will continue on Cambridge St (Stage 4B).
- Sidewalk installation will begin on the east end of Lake St NE (Stage 5).

#### Early October

- Turf restoration will be complete on Hiawatha Ave (Stage 3).
- The first layer of asphalt will be paved on Cambridge St (Stages 4A & 4B).
- Sidewalk installation and turf restoration will begin on Cambridge St (Stages 4A & 4B).
- The final layer of asphalt will be paved on Stages 1, 2, and 3.
- Bridge work on Cambridge St (Stage 4B) is scheduled to wrap up by mid-October.



## CONSTRUCTION

### Concrete Pouring

Concrete pouring will begin shortly after underground utility construction has been completed. Please stay off all of the wet concrete with pedestrian traffic for 24 hours and vehicle traffic for 7 days. Driving on the new concrete too early can cause it to crack, causing the full process to be restarted and delaying completion. Notice will be provided to residents before the concrete pours giving an opportunity for residents to remove vehicles from driveways to safe areas to park.

### Road Paving

After the concrete curb has been poured, the roadway will be paved with its first lift of asphalt. PLEASE BE CAREFUL AROUND THE FRESHLY PAVED ASPHALT. The asphalt will typically be installed at temperatures between 275° F and 350° F. Therefore, please have children and pets stay away from the asphalt until it cools, which will be after it's rolled the same day. Touching the asphalt too fast can burn the skin or paws. The final lift of asphalt will be paved on some phases in early October and all phases of the project by late October or early November.

### Turf Restoration

The following guidelines are intended to help you maintain your lawn once restoration begins in your area:

- Mowing
  - Please do not mow for at least three weeks. The leaf blades are all that remain for the plant to live. If cut too short, it may not come back.
  - After three weeks, set the mower deck at least 3 inches high or at the highest setting. Do not cut more than half the plant off at a time, and do not mow during hot weather. Please cut your lawn at this height for the remainder of the year.
- Watering
  - The contractor will water as needed until the seed grows or throughout the sod warranty period. Even during this time, if you notice your lawn is not growing or is drying out, please water as appropriate. You will be responsible for watering and maintenance of your lawn after the sod warranty period is up or after the seed has grown.
- Fertilizing
  - You will not need to fertilize until next spring. When you do fertilize, please use a phosphorus-free fertilizer.

## ACCESS & PARKING



Cambridge St will be closed at the bridge over Minnehaha Creek starting the week of September 9<sup>th</sup> through Mid-October for bridge resurfacing work. A detour is in place for all Van Buren Ave apartment traffic that should be used now through Mid-October. This detour directs traffic to use 2<sup>nd</sup> St NE from Blake Rd to access the neighborhood. All Hiawatha Ave residents should travel east on Hiawatha Ave to access Blake Rd during the Cambridge St bridge work. All Cambridge St Businesses will have access to Blake Rd using Cambridge St during the bridge work.

When the street and utilities are under construction, the contractor will need all of the space in the street possible. Therefore, parking will not be allowed on the project area streets during the working hours. Access to driveways will be provided as much as possible. The project team has also been working with Metro Transit to determine revised bus stop locations to allow for safer bus stop pickup/drop offs. Temporary access restrictions should be anticipated during the work day. The project team understands the need for access to each property, therefore the streets will be temporarily restored at the end of each work day and access to private driveways will generally be available each night.

During street & utility reconstruction, access conditions are usually most challenging after rainfall. Heavy traffic over muddy streets makes conditions worse. Residents will be encouraged to drive on paved roadways whenever that alternative exists.

Typical working hours for the project will be 7 a.m. to 7 p.m., Monday through Friday, and 8 a.m. to 6 p.m. on Saturdays if necessary. No work is allowed on Sundays or holidays.

## SAFETY



The contractor will do everything they can to make the project area safe for residents. However, residents should be aware of their surroundings when walking or driving near construction equipment. The City asks that residents keep their distance from construction equipment in use and utility trenches. There are also materials that can cause harm if caution is not used such as hot asphalt pavement immediately after being placed. Please keep children and pets away from construction activity and open trenches as they might not be aware of the dangers. If you see anything that you feel is unsafe, please do not hesitate to call Josh Hrabe.



## CONTACT AND WEBSITE INFO



**Josh Hrabe**, of Bolton & Menk, Inc., will be on the project site representing the City and its residents and business owners. If you have any questions regarding this newsletter, the project, or anything in general, you may approach him on site or call his cell phone at **(612) 965-2473**. He can also be reached via email at [\*\*joshhr@bolton-menk.com\*\*](mailto:joshhr@bolton-menk.com)

**Nick Amatuccio**, of Bolton & Menk, Inc., is the Project Engineer overseeing the construction process and will serve as a secondary point of contact. He can be reached at **(612)-965-3926** or [\*\*nickam@bolton-menk.com\*\*](mailto:nickam@bolton-menk.com)

**Mike Waltman**, of Bolton & Menk, Inc., is the Project Manager working on behalf of the City and its residents. He can be reached at **(952) 890-0509** or **(612) 221-6946** or [\*\*mikewa@bolton-menk.com\*\*](mailto:mikewa@bolton-menk.com)

**Eric Klingbeil** is the Assistant City Engineer for the City of Hopkins. He can be reached at **(952) 548-6357** or [\*\*eklingbeil@hopkinsmn.com\*\*](mailto:eklingbeil@hopkinsmn.com)

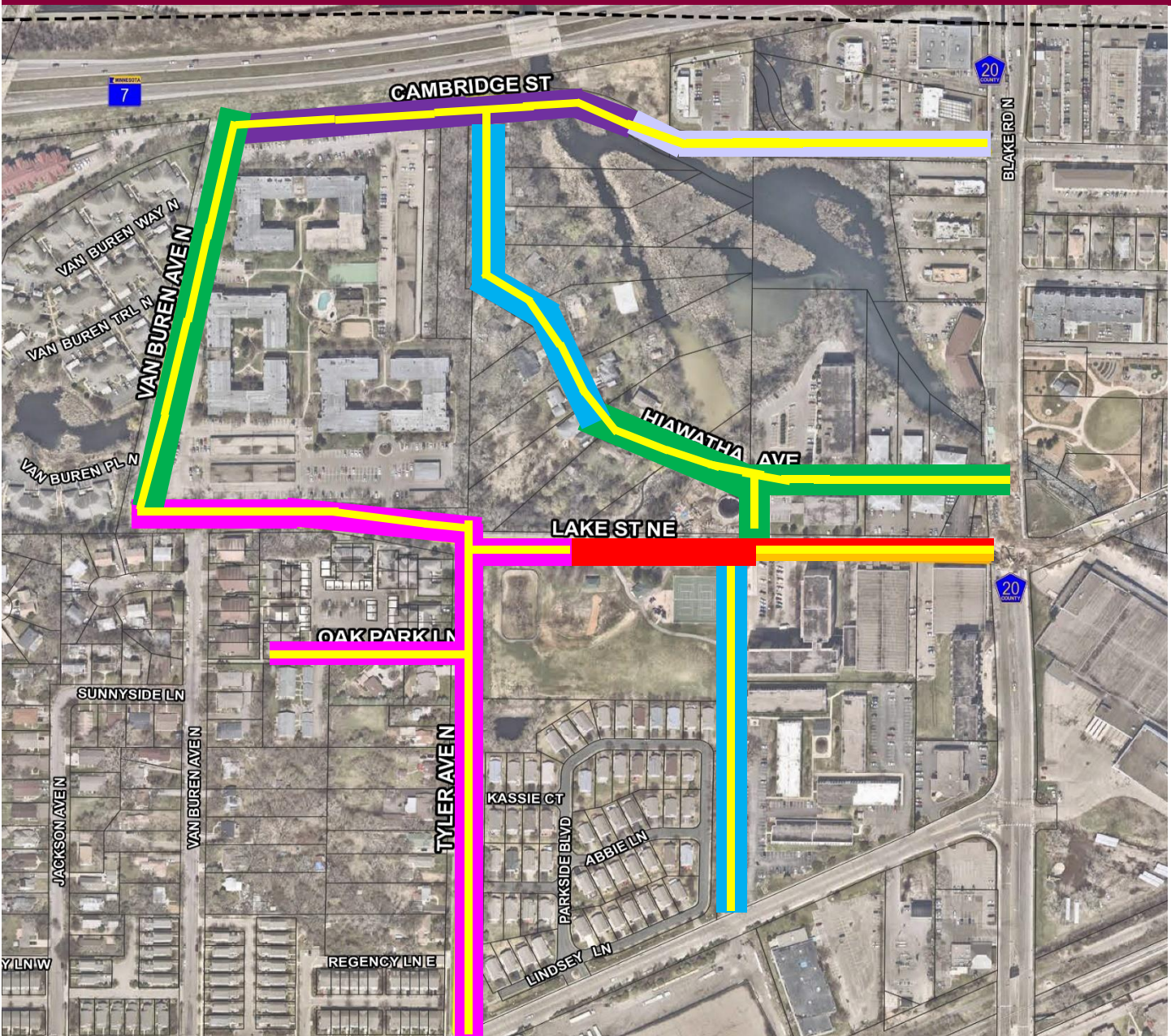
**Website:** The website will be updated approximately weekly with the latest project info throughout construction, and residents can sign-up for weekly email and/or text updates through the website. The site URL is [\*\*www.Hopkins-2019.com\*\*](http://www.Hopkins-2019.com)

If you would like this newsletter in alternative formats or languages please contact Eric Klingbeil at [\*\*eklingbeil@hopkinsmn.com\*\*](mailto:eklingbeil@hopkinsmn.com) or **952-935-1834**.

Si desea obtener este boletín en alternativa formato o idiomas porfavor contacta a Eric Klingbeil al [\*\*eklingbeil@hopkinsmn.com\*\*](mailto:eklingbeil@hopkinsmn.com) o **952-935-1834**.



# PROJECT MAP



## LEGEND

<p><span style="display: inline-block; width: 20px; height: 10px; background-color: #00b0f0; border: 1px solid black;"></span> STAGE 1, (EARLY MAY – EARLY SEPTEMBER)</p> <p><span style="display: inline-block; width: 20px; height: 10px; background-color: #ff00ff; border: 1px solid black;"></span> STAGE 2, (EARLY JUNE – EARLY SEPTEMBER)</p> <p><span style="display: inline-block; width: 20px; height: 10px; background-color: #008000; border: 1px solid black;"></span> STAGE 3, (EARLY JULY – EARLY OCTOBER)</p> <p><span style="display: inline-block; width: 20px; height: 10px; background-color: #ccccff; border: 1px solid black;"></span> STAGE 4A (EARLY AUGUST – LATE OCTOBER)</p>	<p><span style="display: inline-block; width: 20px; height: 10px; background-color: #ffcc00; border: 1px solid black;"></span> STAGE 5, (MID SEPTEMBER – EARLY OCTOBER)</p> <p><span style="display: inline-block; width: 20px; height: 10px; background-color: #ff0000; border: 1px solid black;"></span> MET COUNCIL PROJECT (LATE APRIL – MID SEPTEMBER)</p> <p><span style="display: inline-block; width: 20px; height: 10px; background-color: #ffff00; border: 1px solid black;"></span> 2019 PROJECT AREAS</p> <p><span style="display: inline-block; width: 20px; height: 10px; background-color: #660066; border: 1px solid black;"></span> STAGE 4B (EARLY AUGUST – LATE OCTOBER)</p>
---	---

- Schedule changes in early stages due to weather, contractor scheduling, and unforeseen conditions may impact later stages
- As construction occurs, schedule updates to be provided via newsletters, website, flyers, etc.