



CONSTRUCTION NEWSLETTER



Assessments



Project Schedule



Construction



Access & Parking



Safety



Contact



Map & Phasing

\$ SPECIAL ASSESSMENTS

The final interest rate for the Special Assessments has been determined. Payments can be made with interest between June 29 and November 29, 2019 before going on property taxes. The interest rate is 4.5937%. Questions regarding special assessments can be directed to the special assessment clerk, Melanie Ortiz at 952-548-6310.

PROJECT SCHEDULE

A phased construction schedule is proposed as shown in the map on the last page of this newsletter. Recently, sod was installed on Tyler Ave N, sidewalk was installed along Hiawatha Ave and Lake St NE, and sidewalk was poured on the south end of the bridge. The following is an overview of the upcoming project schedule:

Early/Mid-October

- Turf restoration on Tyler Ave, Lake St, Van Buren Ave, and Hiawatha Ave (Stages 1-3).
- The first layer of asphalt will be paved on Cambridge St (Stages 4A & 4B).
- Sidewalk installation on Cambridge St (Stages 4A & 4B)
- Final clean-up work will occur on the bridge on Cambridge St (Stage 4B).
- Tree Planting and permanent sign installation throughout the project area.
- The final layer of asphalt will be paved on Tyler Ave, Lake St, Van Buren Ave, and Hiawatha Ave (Stages 1-3).

Late October/Early November

- Turf restoration on Cambridge St (Stages 4A & 4B).
- The final layer of asphalt will be paved on Cambridge St (Stages 4A & 4B).
- Final clean-up work will occur throughout the project area.

CONSTRUCTION



Road Paving

After the concrete curb has been poured, the roadway will be paved with its first lift of asphalt. **PLEASE BE CAREFUL AROUND THE FRESHLY PAVED ASPHALT.** The asphalt will typically be installed at temperatures between 275° F and 350° F. Therefore, please have children and pets stay away from the asphalt until it cools, which will be after it's rolled the same day. Touching the asphalt too fast can burn the skin or paws. The final lift of asphalt will be paved on some phases in early October and all phases of the project by late October or early November.

Turf Restoration

The following guidelines are intended to help you maintain your lawn once restoration begins in your area:

- Mowing
 - Please do not mow for at least three weeks. The leaf blades are all that remain for the plant to live. If cut too short, it may not come back.
 - After three weeks, set the mower deck at least 3 inches high or at the highest setting. Do not cut more than half the plant off at a time, and do not mow during hot weather. Please cut your lawn at this height for the remainder of the year.

- Watering
 - The contractor will water as needed until the seed grows or throughout the sod warranty period. Even during this time, if you notice your lawn is not growing or is drying out, please water as appropriate. You will be responsible for watering and maintenance of your lawn after the sod warranty period is up or after the seed has grown.
- Fertilizing
 - You will not need to fertilize until next spring. When you do fertilize, please use a phosphorus-free fertilizer.

ACCESS & PARKING



When the street and utilities are under construction, the contractor will need all of the space in the street possible. Therefore, parking will not be allowed on the project area streets during the working hours. Access to driveways will be provided as much as possible. The project team has also been working with Metro Transit to determine revised bus stop locations to allow for safer bus stop pickup/drop offs. Temporary access restrictions should be anticipated during the work day. The project team understands the need for access to each property, therefore the streets will be temporarily restored at the end of each work day and access to private driveways will generally be available each night.

The Cambridge St bridge work is anticipated to wrap up in Mid-October, at which time Cambridge St will be paved with the first layer of asphalt and the bridge will be opened up to traffic.

Typical working hours for the project will be 7 a.m. to 7 p.m., Monday through Friday, and 8 a.m. to 6 p.m. on Saturdays if necessary. No work is allowed on Sundays or holidays.

SAFETY



The contractor will do everything they can to make the project area safe for residents. However, residents should be aware of their surroundings when walking or driving near construction equipment. The City asks that residents keep their distance from construction equipment in use and utility trenches. There are also materials that can cause harm if caution is not used such as hot asphalt pavement immediately after being placed. Please keep children and pets away from construction activity and open trenches as they might not be aware of the dangers. If you see anything that you feel is unsafe, please do not hesitate to call Josh Hrabe.



CONTACT AND WEBSITE INFO



Josh Hrabe, of Bolton & Menk, Inc., will be on the project site representing the City and its residents and business owners. If you have any questions regarding this newsletter, the project, or anything in general, you may approach him on site or call his cell phone at **(612) 965-2473**. He can also be reached via email at joshhr@bolton-menk.com

Nick Amatuccio, of Bolton & Menk, Inc., is the Project Engineer overseeing the construction process and will serve as a secondary point of contact. He can be reached at **(612)-965-3926** or nickam@bolton-menk.com

Mike Waltman, of Bolton & Menk, Inc., is the Project Manager working on behalf of the City and its residents. He can be reached at **(952) 890-0509** or **(612) 221-6946** or mikewa@bolton-menk.com

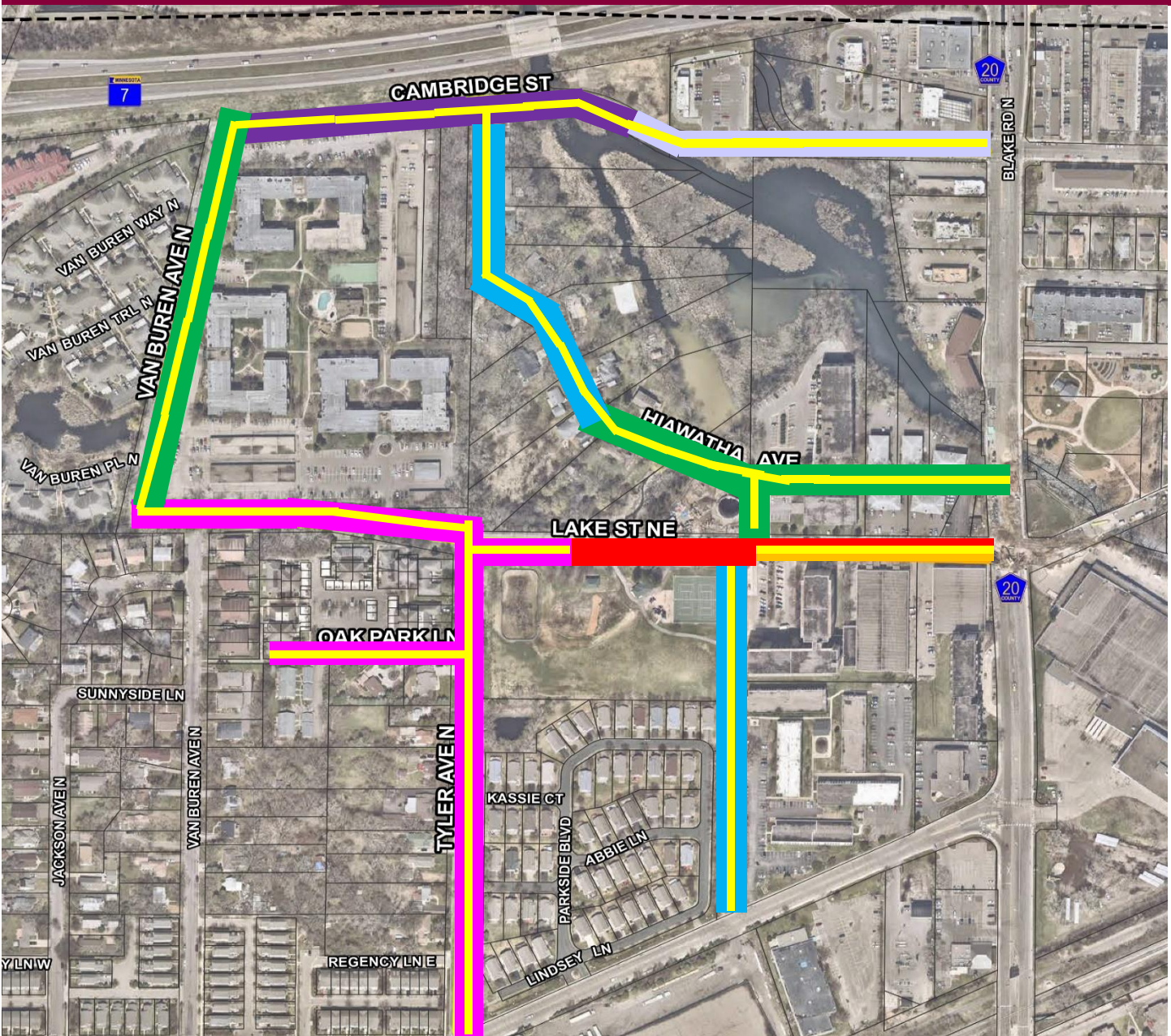
Eric Klingbeil is the Assistant City Engineer for the City of Hopkins. He can be reached at **(952) 548-6357** or eklingbeil@hopkinsmn.com

Website: The website will be updated approximately weekly with the latest project info throughout construction, and residents can sign-up for weekly email and/or text updates through the website. The site URL is www.Hopkins-2019.com

If you would like this newsletter in alternative formats or languages please contact Eric Klingbeil at eklingbeil@hopkinsmn.com or **952-935-1834**.

Si desea obtener este boletín en alternativa formato o idiomas por favor contacta a Eric Klingbeil al eklingbeil@hopkinsmn.com o **952-935-1834**.

PROJECT MAP



LEGEND

<p> STAGE 1, (EARLY MAY – EARLY OCTOBER)</p> <p> STAGE 2, (EARLY JUNE – EARLY OCTOBER)</p> <p> STAGE 3, (EARLY JULY – MID OCTOBER)</p> <p> STAGE 4A (EARLY AUGUST – LATE OCTOBER)</p>	<p> STAGE 5, (MID SEPTEMBER – EARLY OCTOBER)</p> <p> MET COUNCIL PROJECT (LATE APRIL – EARLY OCTOBER)</p> <p> 2019 PROJECT AREAS</p> <p> STAGE 4B (EARLY AUGUST – LATE OCTOBER)</p>
---	---

- Schedule changes in early stages due to weather, contractor scheduling, and unforeseen conditions may impact later stages
- As construction occurs, schedule updates to be provided via newsletters, website, flyers, etc.