



CONSTRUCTION NEWSLETTER



Assessments



Project Schedule



Construction



Safety



Contact



Map & Phasing

\$ SPECIAL ASSESSMENTS

The final interest rate for the Special Assessments has been determined. Payments can be made with interest between June 29 and November 29, 2019 before going on property taxes. The interest rate is 4.5937%. Questions regarding special assessments can be directed to the special assessment clerk, Melanie Ortiz at 952-548-6310.

📅 PROJECT SCHEDULE

A phased construction schedule is proposed as shown in the map on the last page of this newsletter. Recently, turf restoration continued on Hiawatha and began on Cambridge St with topsoil installation, the final layer of asphalt was paved on Stages 1, 2 & 3, and bridge work was completed on Cambridge St. The following is an overview of the upcoming project schedule:

Week of October 28th

- Topsoil installed on Cambridge St (Stages 4A & 4B).
- The final layer of asphalt will be paved on Cambridge St (Stages 4A & 4B).

Week of November 4th

- Turf restoration will wrap up on Hiawatha Ave and Cambridge St (Stages 3, 4A, 4B).

Mid-November and/or Early Spring (Pending Weather)

- Clean-up work throughout the project area
- Pavement striping throughout the project area

CONSTRUCTION



Road Paving

Cambridge St is scheduled to be paved with the final lift of asphalt on **Saturday, November 2nd**. PLEASE BE CAREFUL AROUND THE FRESHLY PAVED ASPHALT. The asphalt will typically be installed at temperatures between 275° F and 350° F. Therefore, please have children and pets stay away from the asphalt until it cools, which will be after it's rolled the same day. Touching the asphalt too fast can burn the skin or paws.

Turf Restoration

Late season seeding will be guaranteed by the Contractor until the turf is established, even into next spring. Please do not mow the grass until it is roughly 5"-6" high and do not cut more than 1/3 of the height of the grass once it's established. Please continue to water newly established turf areas through next year to maintain a healthy lawn.

SAFETY



The contractor will do everything they can to make the project area safe for residents. However, residents should be aware of their surroundings when walking or driving near construction equipment. The City asks that residents keep their distance from construction equipment in use and utility trenches. There are also materials that can cause harm if caution is not used such as hot asphalt pavement immediately after being placed. Please keep children and pets away from construction activity and open trenches as they might not be aware of the dangers. If you see anything that you feel is unsafe, please do not hesitate to call Josh Hrabe.



CONTACT AND WEBSITE INFO



Josh Hrabe, of Bolton & Menk, Inc., will be on the project site representing the City and its residents and business owners. If you have any questions regarding this newsletter, the project, or anything in general, you may approach him on site or call his cell phone at **(612) 965-2473**. He can also be reached via email at [**joshhr@bolton-menk.com**](mailto:joshhr@bolton-menk.com)

Nick Amatuccio, of Bolton & Menk, Inc., is the Project Engineer overseeing the construction process and will serve as a secondary point of contact. He can be reached at **(612)-965-3926** or [**nickam@bolton-menk.com**](mailto:nickam@bolton-menk.com)

Mike Waltman, of Bolton & Menk, Inc., is the Project Manager working on behalf of the City and its residents. He can be reached at **(952) 890-0509** or **(612) 221-6946** or [**mikewa@bolton-menk.com**](mailto:mikewa@bolton-menk.com)

Eric Klingbeil is the Assistant City Engineer for the City of Hopkins. He can be reached at **(952) 548-6357** or [**eklingbeil@hopkinsmn.com**](mailto:eklingbeil@hopkinsmn.com)

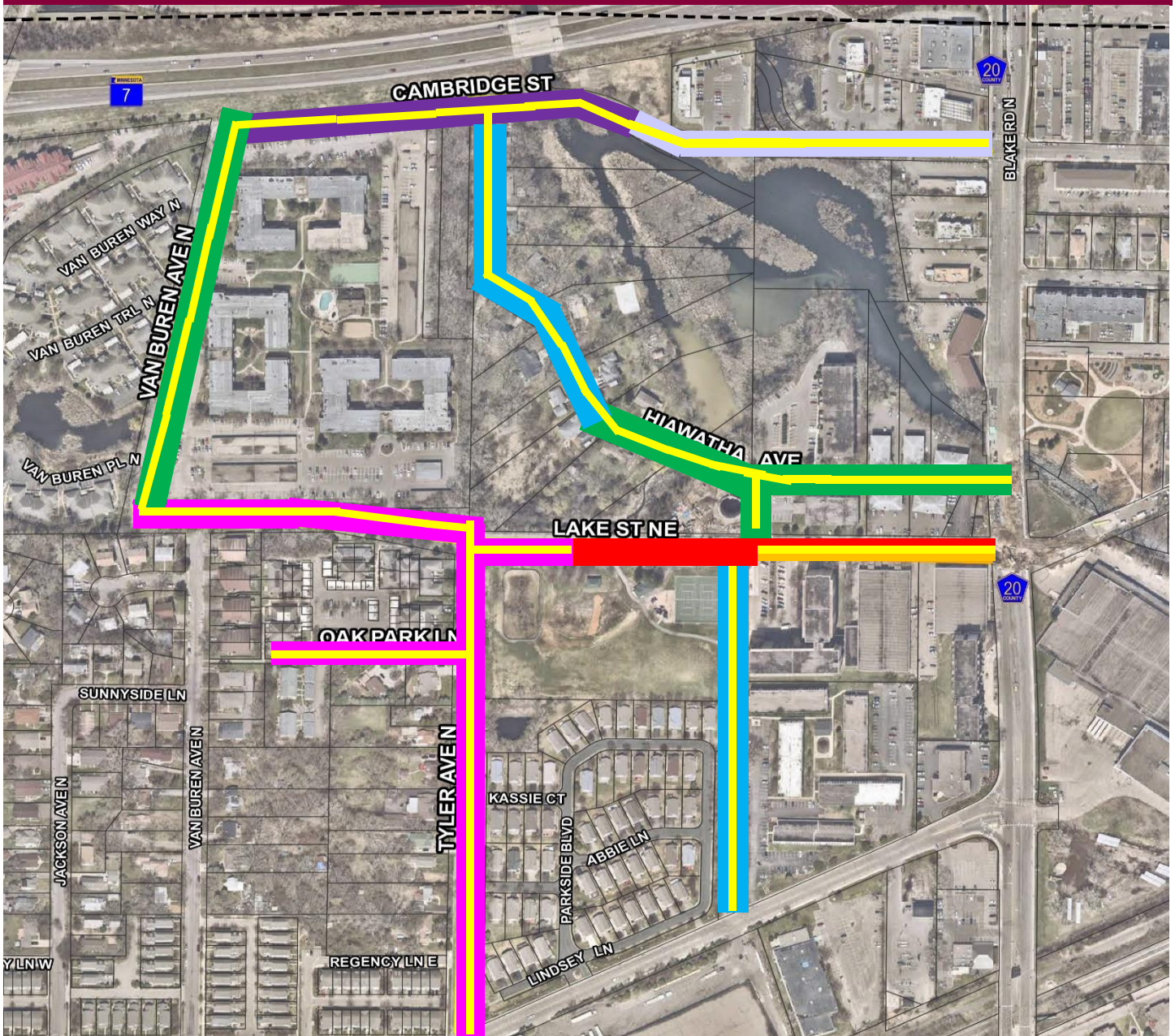
Website: The website will be updated approximately weekly with the latest project info throughout construction, and residents can sign-up for weekly email and/or text updates through the website. The site URL is [**www.Hopkins-2019.com**](http://www.Hopkins-2019.com)

If you would like this newsletter in alternative formats or languages please contact Eric Klingbeil at [**eklingbeil@hopkinsmn.com**](mailto:eklingbeil@hopkinsmn.com) or **952-935-1834**.









Si desea obtener este boletín en alternativa formato o idiomas porfavor contacta a Eric Klingbeil al [**eklingbeil@hopkinsmn.com**](mailto:eklingbeil@hopkinsmn.com) o **952-935-1834**.

THIS IS THE LAST NEWSLETTER FOR THE 2019 HOPKINS STREET AND UTILITY PROJECT. WE THANK YOU FOR YOUR PATIENCE AND COOPERATION THROUGHOUT THE PROJECT.

PROJECT MAP



LEGEND

- | | |
|--|---|
|  STAGE 1,
(SUBSTANTIALLY COMPLETE) |  STAGE 5,
(SUBSTANTIALLY COMPLETE) |
|  STAGE 2,
(SUBSTANTIALLY COMPLETE) |  MET COUNCIL PROJECT
(SUBSTANTIALLY COMPLETE) |
|  STAGE 3,
(SEEDING ON HIAWATHA EARLY NOVEMBER) |  2019 PROJECT AREAS |
|  STAGE 4A
(EARLY AUGUST – EARLY NOVEMBER) |  STAGE 4B
(EARLY AUGUST – EARLY NOVEMBER) |