



Anoka Solution 2022-2023 Construction



The U.S. Highway 10/169 Project will reduce crashes and improve traffic operations.
This will result in improved mobility and reliability for all users of the project corridor.

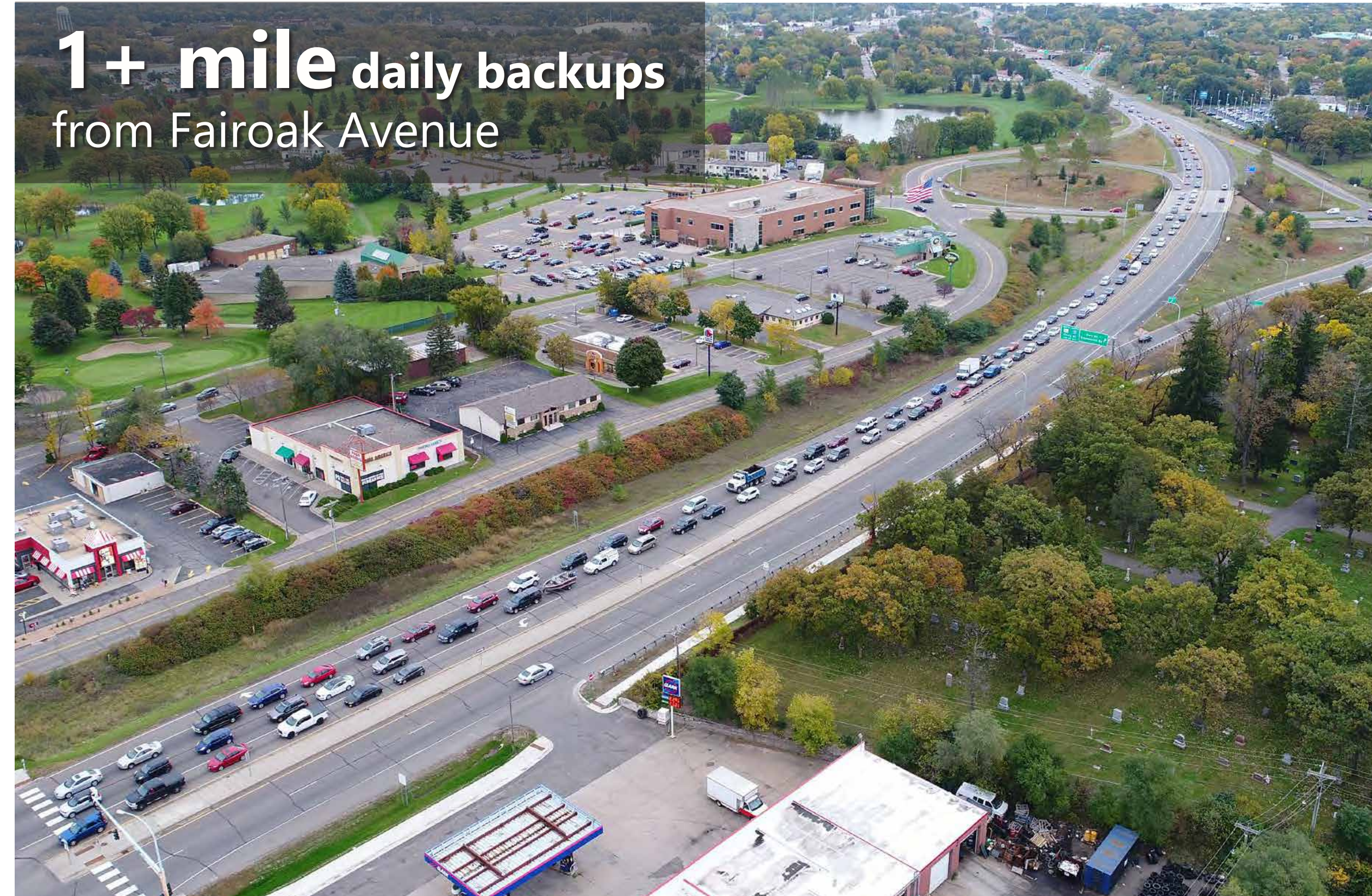
Existing Issues

- 60,600 vehicles per day
- Principal Arterial moves regional freight; 3,300 heavy commercial vehicles
- 1+ mile back-ups during peak hour
- 21 mph avg. peak hour speed (60 mph posted)
- 1,128 crashes (2 fatal) from 2006-2015
- Crash Rate 1.5x state average
- Segmented local network forces local highway trips

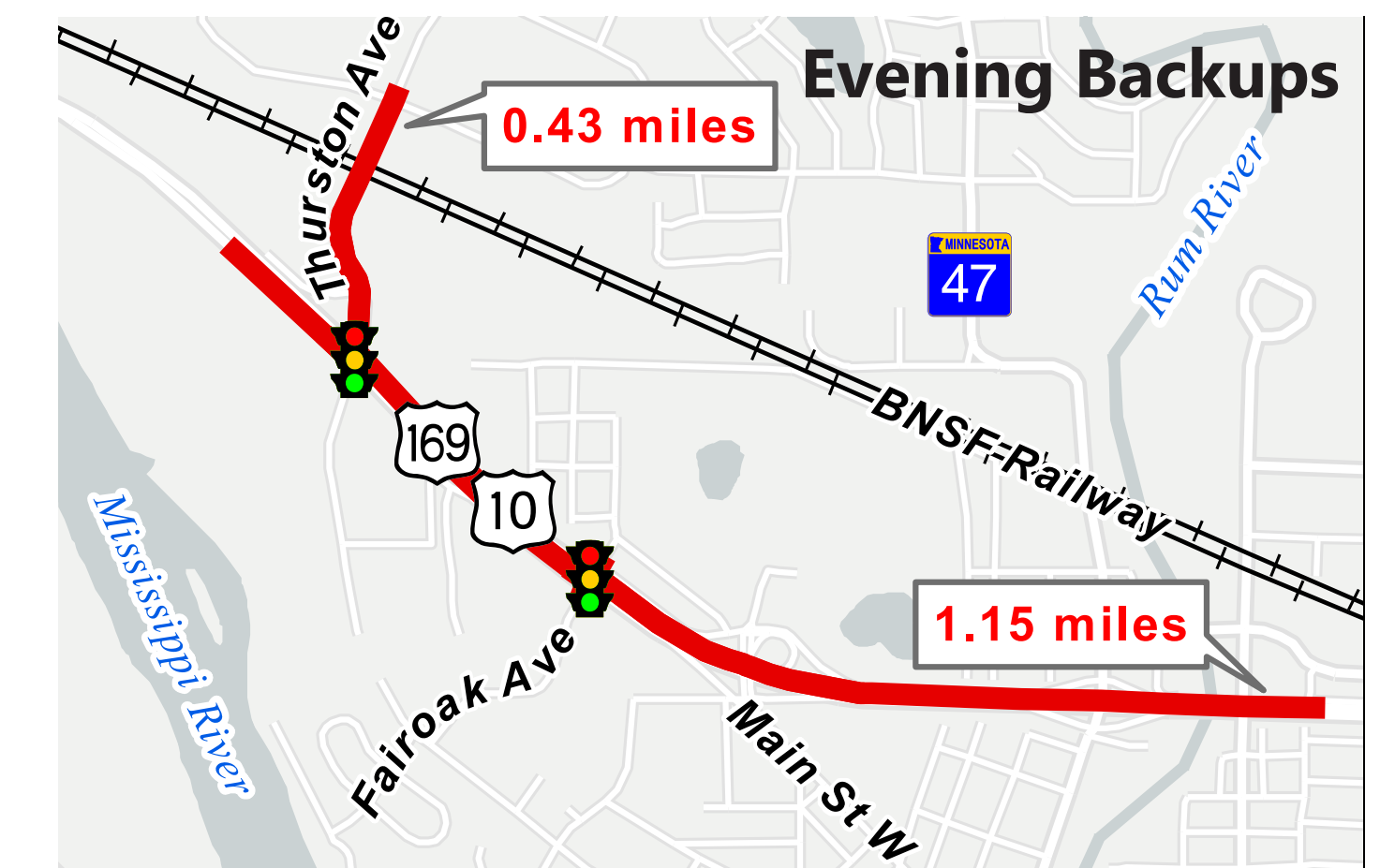
Investment Results

- 75% delay reduction
- 57% crash reduction
- 4.0 benefit-cost ratio
- Accomodate 90,000 vehicles/day
- Local trips on local network
- Safe and reliable movement of goods and services

1+ mile daily backups
from Fair Oak Avenue



The City of Anoka continues to work closely with MnDOT, Metropolitan Council, Anoka County, and other partners to plan, design, and implement fiscally-responsible safety and operation improvements to benefit all U.S. Highway 10/169 corridor users.



All funding is
committed!

\$ Total
Investment
80M

AnokaHwy10.com



U.S. Highway 10/169 Improvement Project

Why Roundabouts?

15-20

mph average speeds

Lower, more consistent speeds on roadways



Less stopping and starting time.
Less idling time.

Compared to current conditions...

93%

reduction in **DELAY** for Thurston Ave at highway interchange

76%

reduction in **DELAY** for Main Street



Fewer Conflict Points
than traditional controls

Vehicle-vehicle conflict points are locations where a vehicle interacts with another vehicle.

16 conflict points
vs.
37

at a signalized interchange

Thurston Ave at Hwy 10/169

20 conflict points
vs.
61

at a stop-controlled intersection

Main Street at Hwy 10/169

9 conflict points
vs.
40

at a signalized interchange

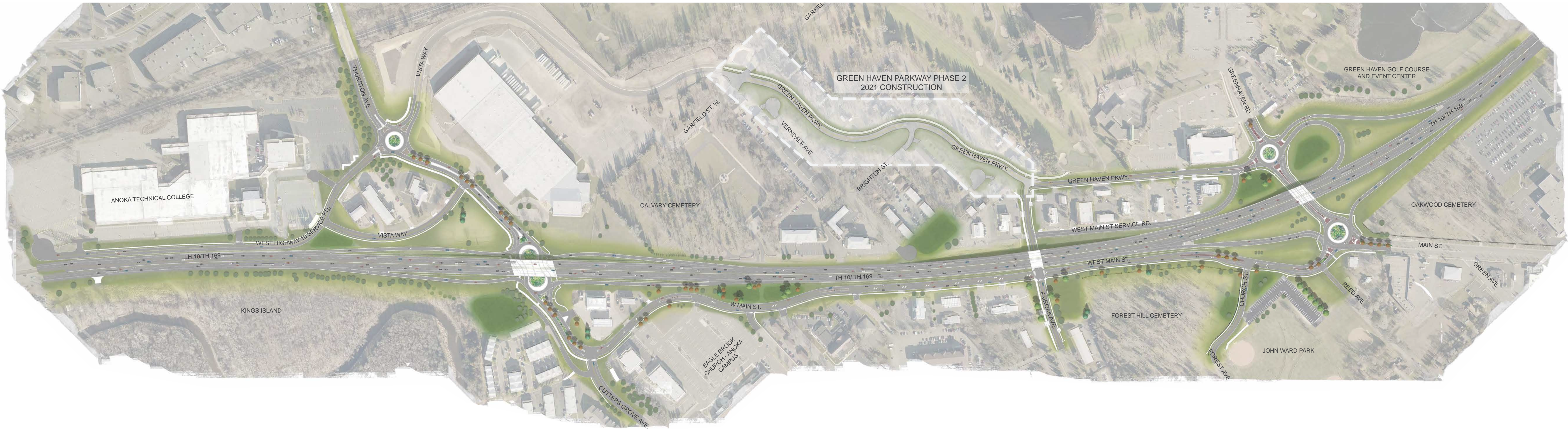
Thurston Ave at Green Haven Pkwy



Improved **PEDESTRIAN SAFETY**



83% reduction in **SERIOUS INJURY CRASHES**



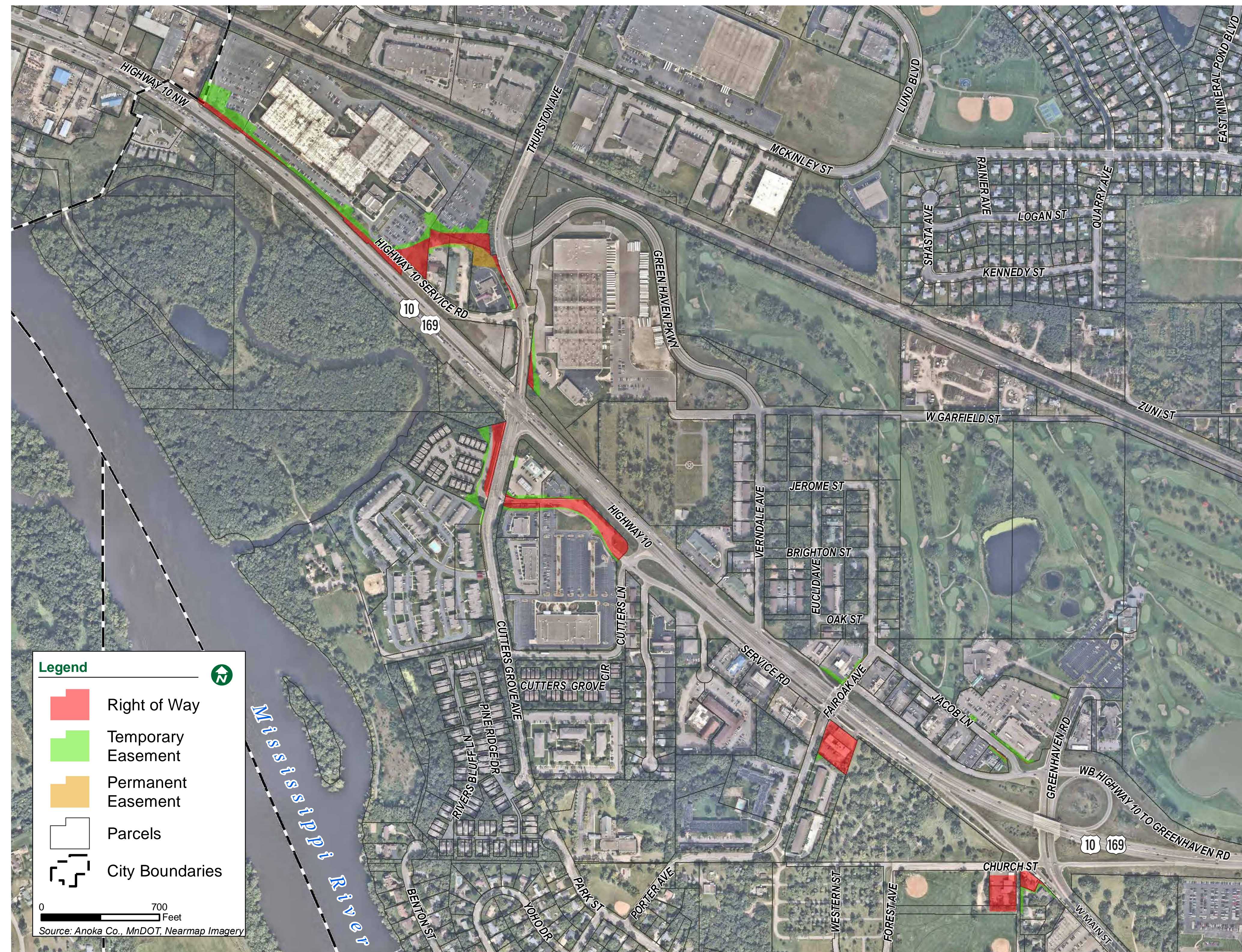
Preliminary Private Property Impacts



Some private property will be impacted by the project.



Property owners will be contacted directly to discuss impacts and the acquisition process.





U.S. Highway 10/169 Improvement Project

Construction Staging



What is Construction Staging?

Construction Staging is the sequence and timing of work, or the steps that need to be taken during construction in order to build a project.

Considerations

- Maintain community access
- Key travel routes (regional and local)
- Access in/out of area
- Public safety
- Detour routes versus under construction/open to traffic
- Space for contractor to work safely & efficiently
- Construction acceleration opportunities
- Specific business needs
- Emergency services
- Community events

Key Items in Development of Construction Staging Plan

- Project will be closely coordinated with the MnDOT Rum River Bridge Replacement and Intersection Improvements Project
- Local access will be provided at all times to Highway 10
- Traffic signals will be used during construction to provide access
- Mainline Highway 10 traffic will be impacted in 2022 and 2023
- One lane in each direction on Highway 10 will remain in operation at all times
- Connection between Highway 10 and Highway 169 will be planned for in every stage
- City of Anoka will construct Green Haven Parkway prior to 2022
- Anoka County will complete multiple projects before 2022 to provide options for regional traffic

A Construction Staging Plan is under development and will be available in *Spring 2020*.

Nearby Projects & Timing



Common Concerns

- **Property Access:** How will I access my property?
- **Businesses:** Will customers be able to find my store? Can business signage be added to guide drivers to a location?
- **Traffic Expectations:** What is expected for potential detour routes and traffic congestion?
- **Large Trucks:** How will trucks access properties for deliveries?
- **Pedestrian & Bicyclists:** Will pedestrians and bicyclists be able to move around the area during construction?



Minnesota Logo Sign Placement

Each type of facility must meet specific criteria to be eligible to participate in the Minnesota Logo Sign Program. The information below helps to determine if your location is eligible and what type of signage is necessary.

The map displays potential locations of main line business logo signs. Ramp and trailblazing signs will be included when it is determined necessary. See program information below for further information.



Program Eligibility Criteria

Category	Gas	Food	Lodging	Pharmacy
Maximum distance to service	3 miles	3 miles	3 miles	3 miles
Minimum period of operation	<ul style="list-style-type: none">Continuous, staffed operation at least 12 hours per day, 7 days per week	<ul style="list-style-type: none">Continuous, staffed food service operation at least 6 days per week, except holidaysProvide at least 2 meals per day during normal mealtimes of breakfast, lunch and dinner	<ul style="list-style-type: none">Open 7 days per week	<ul style="list-style-type: none">Continuous operation 24 hours per day, 7 days per week
Required service to be provided & other requirements	<ul style="list-style-type: none">Vehicle services including gas or alternative fuels & oilRestroom facilitiesPublic access to a telephone	<ul style="list-style-type: none">Seating capacity for at least 20 peopleRestroom facilitiesState or local licensing or approval, where requiredPublic access to a telephone	<ul style="list-style-type: none">Adequate sleeping accommodationsRestroom facilitiesState or local licensing or approval, where requiredPublic access to a telephone	<ul style="list-style-type: none">State licensed pharmacist present and on duty at all times

Program Information

Mainline \$600

Size = 60"W x 36"H

A primary sign that precedes the exit ramp on the freeway and includes service designation. A high level of participation, would result in multiple single (one service) exit signs per exit.

Ramp \$120

Size = 18"W x 12"H

A secondary sign giving direction of travel. If business is not visible from the freeway, a ramp sign may be required.

=

Total \$720
Annual Fee

If needed

Trailblazer add \$60
Annual Fee

Size = 18"W x 12"H

Similar to ramp sign but located on local roads where turns are necessary after exiting an interchange onto the crossroad and the business is still not visible. A business will not be allowed to participate until all necessary trailblazing signs have been installed.

- Fees shown are only for participation in one direction unless otherwise noted.
- Additional fees may apply for production, fabrication, and installation of the actual business signs.

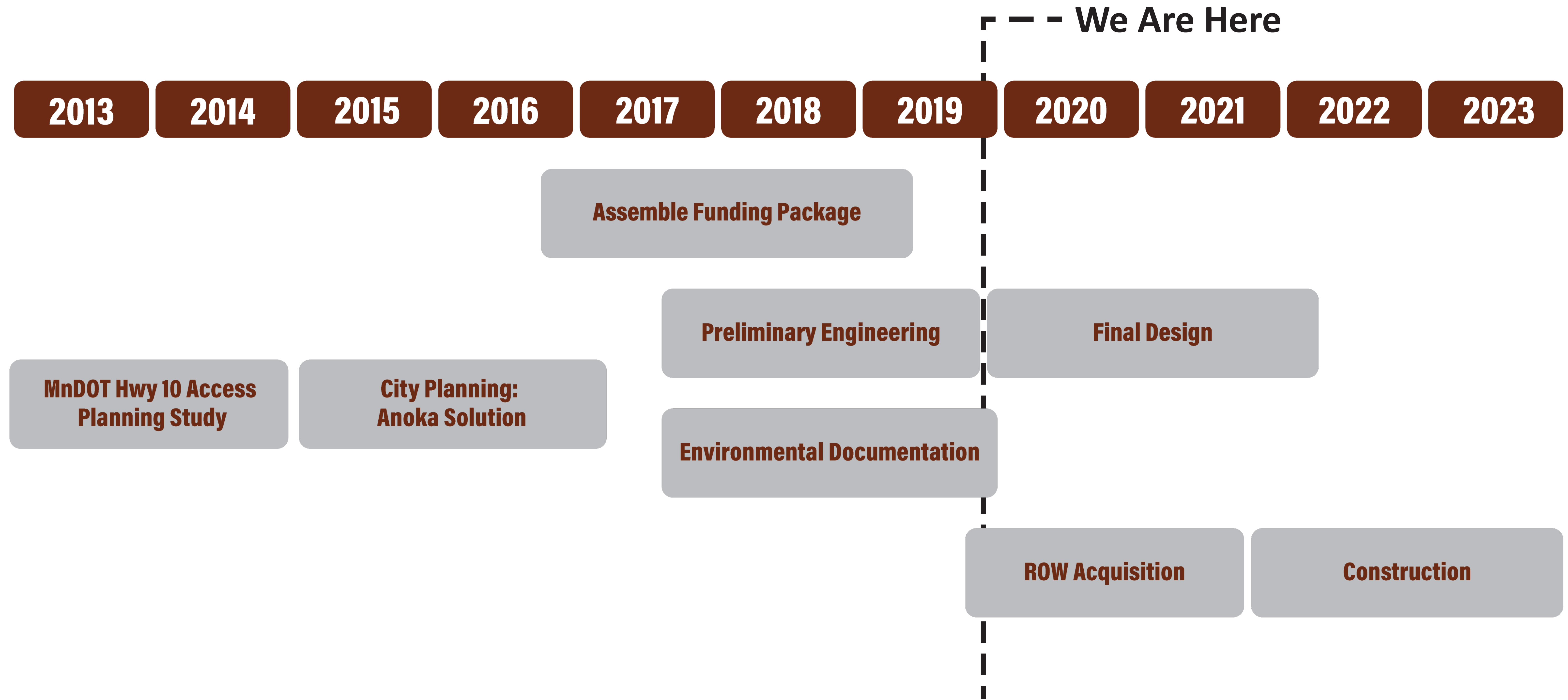
- Rates are subject to change.
- All signs are owned and maintained by Interstate Logos and cannot be bought out.
- For further information visit interstatelogos.com

Current as of December 2019



U.S. Highway 10/169 Improvement Project

Project Schedule





U.S. Highway 10/169 Improvement Project

Stay Informed

There are multiple ways you can stay informed!



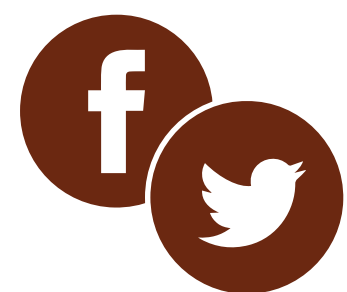
Subscribe to e-Bulletins

Subscribe to receive project updates and announcements by email.



Visit the Project Website

Check back frequently for schedule updates and announcements about events such as open houses.



Follow the City of Anoka on Social Media

The City of Anoka (@CityofAnokaMN) will share project news and announcements on Facebook and Twitter.



Reach out to the Project Manager

Questions, comments, or concerns? Reach out to Eric Johnson, Project Manager, at 952-448-8838 ext. 2840 or eric.johnson@bolton-menk.com

Project Website

AnokaHwy10.com



What you can do today:

- Review informational materials and displays
- Sign up to receive project information by email
- Ask questions - we are here to listen and help!



HWY 10/169 IMPROVEMENTS

TH 10 & MAIN ST. INTERCHANGE





HWY 10/169 IMPROVEMENTS

TH 10 & WEST MAIN ST./THURSTON AVE. INTERCHANGE





HWY 10/169 IMPROVEMENTS

TH 10 & WEST MAIN STREET SERVICE RD. / FAIROAK AVE. UNDERPASS





HWY 10/169 IMPROVEMENTS

FAIROAK AVE. UNDERPASS | BRICK OPTION





HWY 10/169 IMPROVEMENTS

FAIROAK AVE. UNDERPASS | LIMESTONE + BRICK OPTION





COMMUNITY SIGNAGE



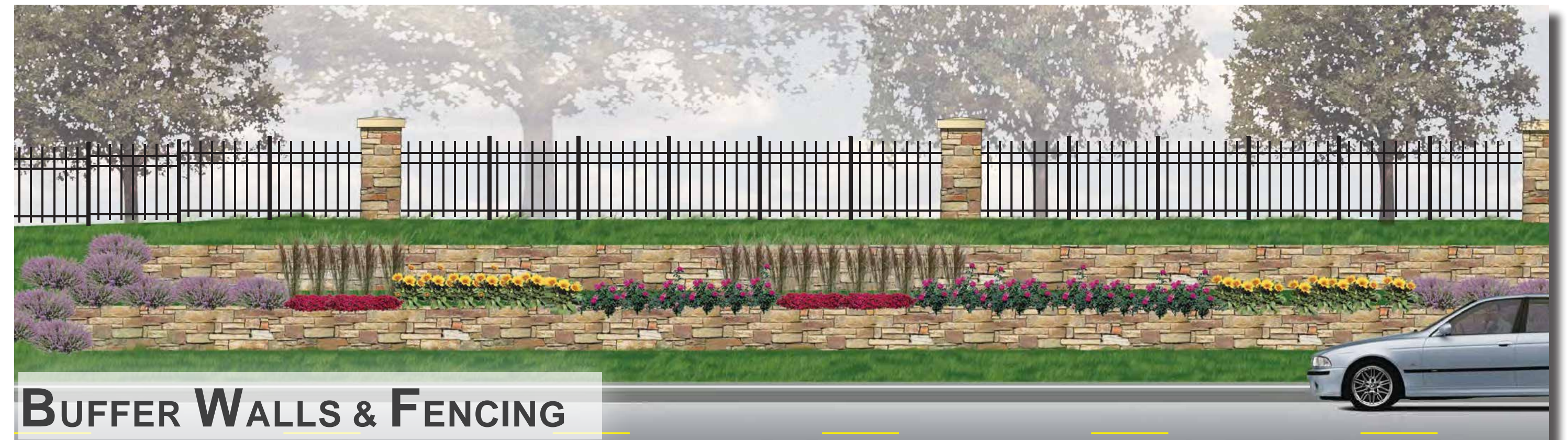
ENHANCE STREETSCAPE



ENHANCE STREETSCAPE



ENHANCE STREETSCAPE



BUFFER WALLS & FENCING



ENHANCE STREETSCAPE



HWY 10/169 IMPROVEMENTS

COMMUNITY CONTEXT

