



U.S. Highway 10/169 Improvement Project

Access During Construction

for vehicles less than 10 ft tall



STAGE

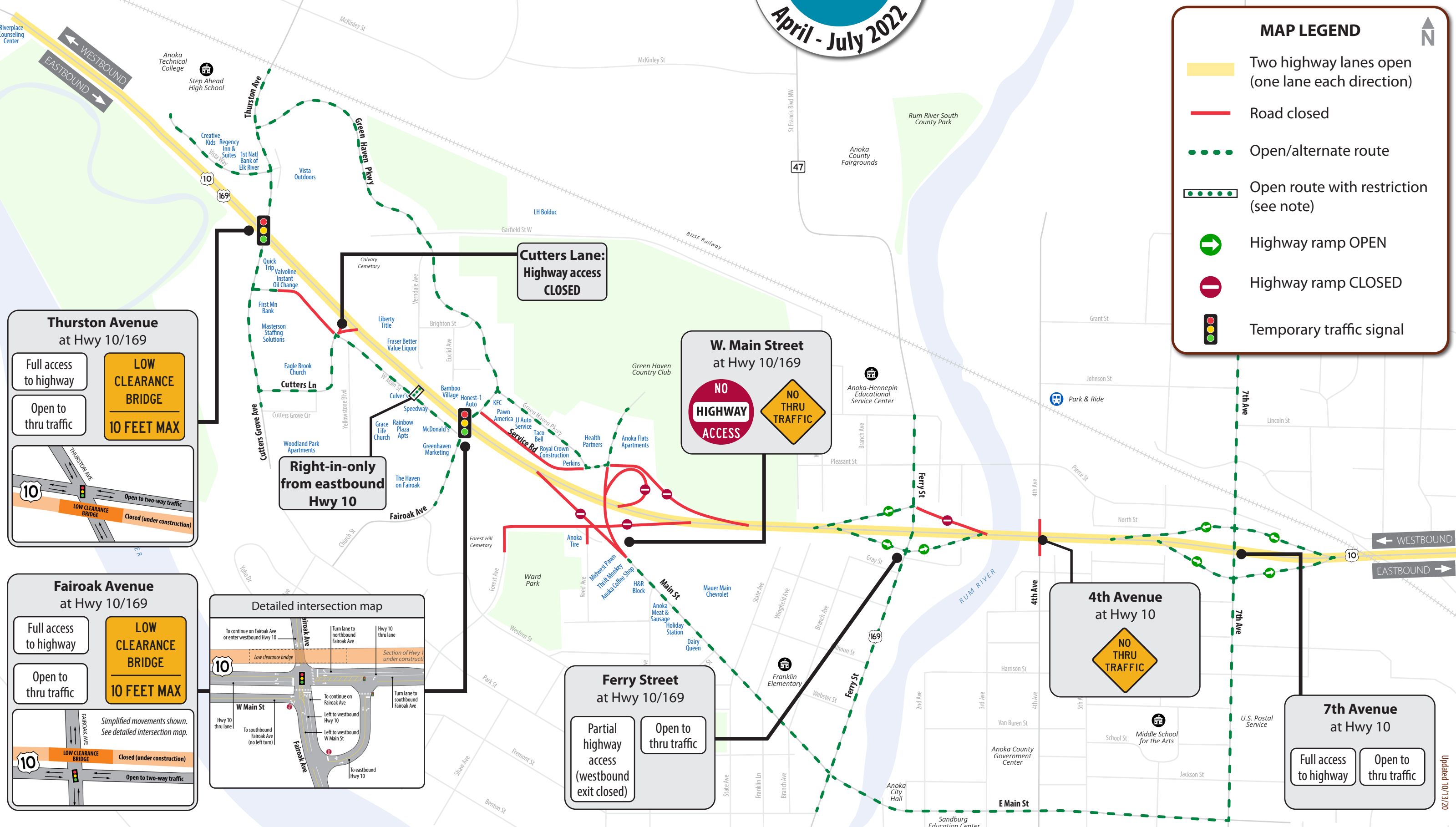
1A

April - July 2022



Subject to change. Check website for most current information.

AnokaHwy10.com



MAP LEGEND

Two highway lanes open (one lane each direction)

Road closed

Open/alternate route

Open route with restriction (see note)

Highway ramp OPEN

Highway ramp CLOSED

Temporary traffic signal

Thurston Avenue at Hwy 10/169

Full access to highway

Open to thru traffic

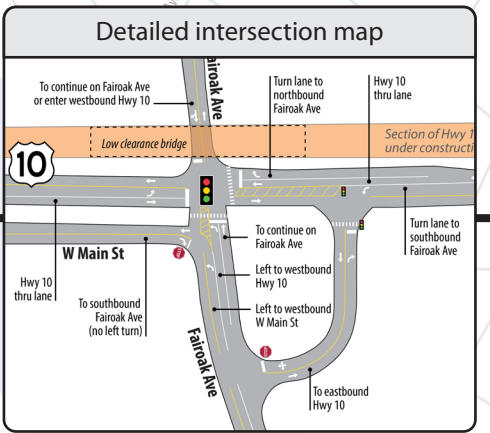
LOW CLEARANCE BRIDGE 10 FEET MAX

Fairoak Avenue at Hwy 10/169

Full access to highway

Open to thru traffic

LOW CLEARANCE BRIDGE 10 FEET MAX



Cutters Lane: Highway access CLOSED

W. Main Street at Hwy 10/169

NO HIGHWAY ACCESS

NO THRU TRAFFIC

Ferry Street at Hwy 10/169

Partial highway access (westbound exit closed)

Open to thru traffic

4th Avenue at Hwy 10

NO THRU TRAFFIC

7th Avenue at Hwy 10

Full access to highway

Open to thru traffic

Updated 10/13/20



U.S. Highway 10/169 Improvement Project

Access During Construction

for vehicles less than 10 ft tall



STAGE

1B

Aug - Nov 2022



⚠ Subject to change. Check website for most current information.

AnokaHwy10.com

MAP LEGEND

Two highway lanes open (one lane each direction)

Road closed

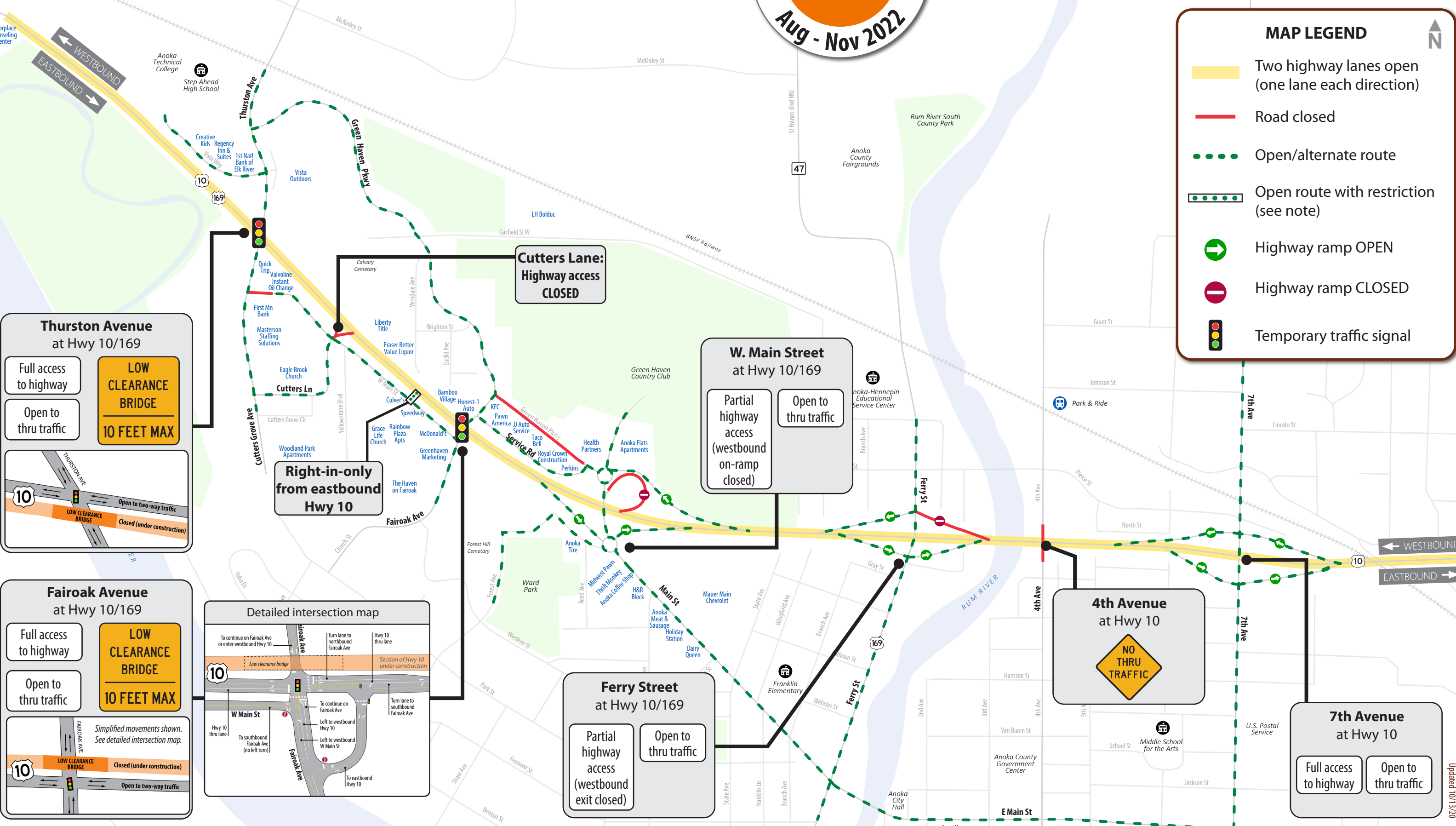
Open/alternate route

Open route with restriction (see note)

Highway ramp OPEN

Highway ramp CLOSED

Temporary traffic signal



Thurston Avenue at Hwy 10/169

Full access to highway

Open to thru traffic

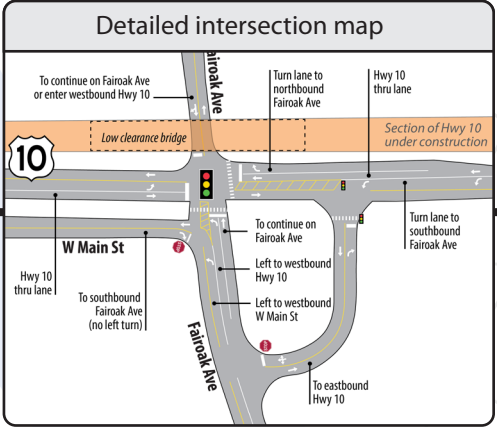
LOW CLEARANCE BRIDGE 10 FEET MAX

Fairoak Avenue at Hwy 10/169

Full access to highway

Open to thru traffic

LOW CLEARANCE BRIDGE 10 FEET MAX



Ferry Street at Hwy 10/169

Partial highway access (westbound exit closed)

Open to thru traffic

4th Avenue at Hwy 10

NO THRU TRAFFIC

7th Avenue at Hwy 10

Full access to highway

Open to thru traffic

Updated 10/13/20



U.S. Highway 10/169 Improvement Project

Access During Construction

for vehicles less than 10 ft tall

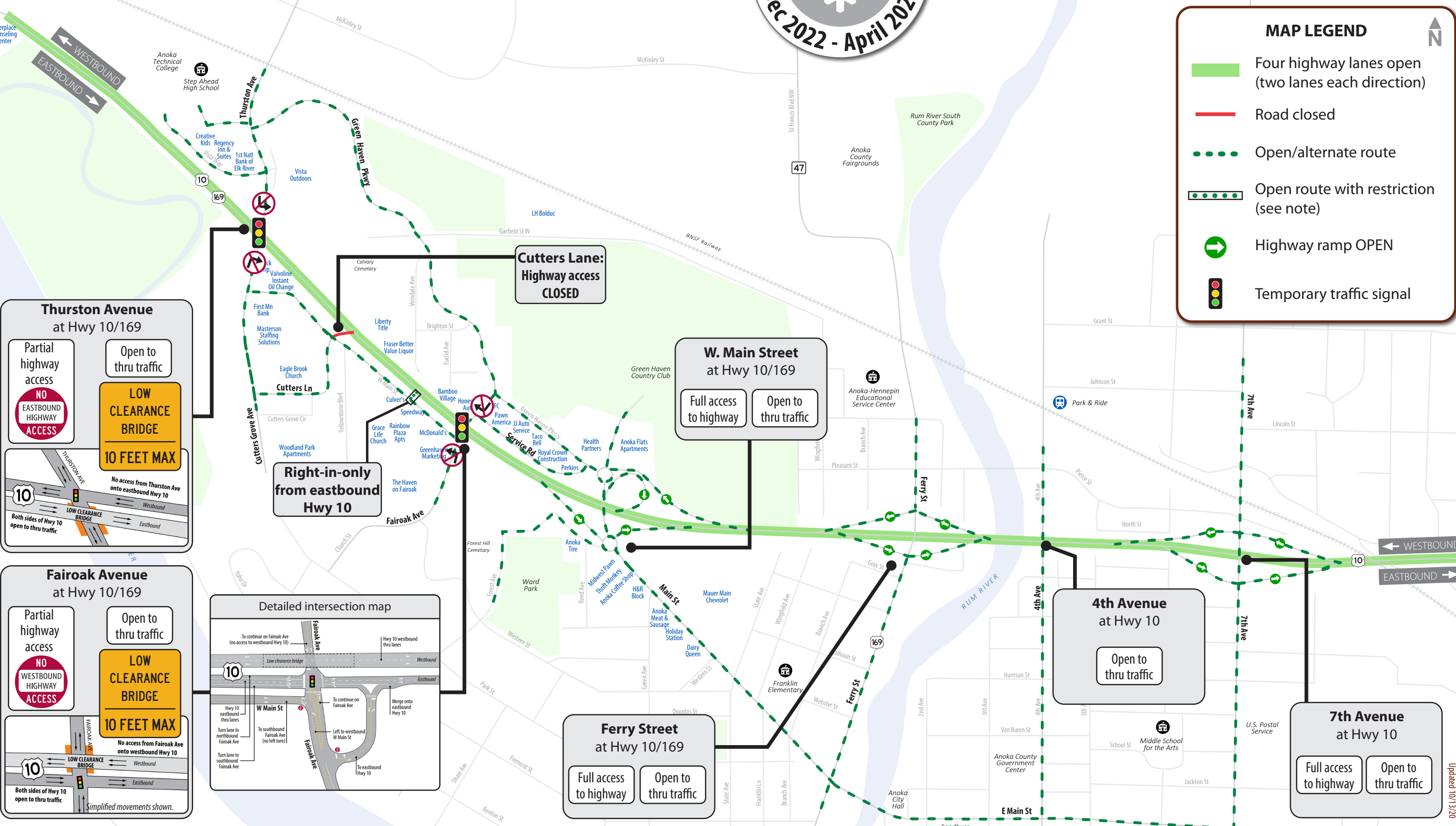


Subject to change. Check website for most current information.

AnokaHwy10.com

MAP LEGEND

- Four highway lanes open (two lanes each direction)
- Road closed
- Open/alternate route
- Open route with restriction (see note)
- Highway ramp OPEN
- Temporary traffic signal



Thurston Avenue at Hwy 10/169

Partial highway access

NO EASTBOUND HIGHWAY ACCESS

Open to thru traffic

LOW CLEARANCE BRIDGE

10 FEET MAX

No access from Thurston Ave onto eastbound Hwy 10

Both sides of Hwy 10 open to thru traffic

Fairoak Avenue at Hwy 10/169

Partial highway access

NO WESTBOUND HIGHWAY ACCESS

Open to thru traffic

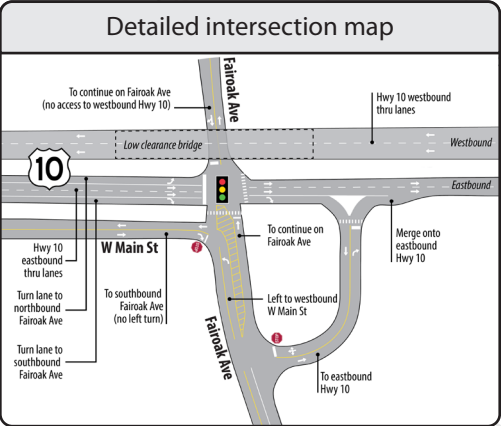
LOW CLEARANCE BRIDGE

10 FEET MAX

No access from Fairoak Ave onto westbound Hwy 10

Both sides of Hwy 10 open to thru traffic

Simplified movements shown.



Cutters Lane: Highway access CLOSED

W. Main Street at Hwy 10/169

Full access to highway

Open to thru traffic

Ferry Street at Hwy 10/169

Full access to highway

Open to thru traffic

4th Avenue at Hwy 10

Open to thru traffic

7th Avenue at Hwy 10

Full access to highway

Open to thru traffic



U.S. Highway 10/169 Improvement Project

Access During Construction

for vehicles less than 10 ft tall

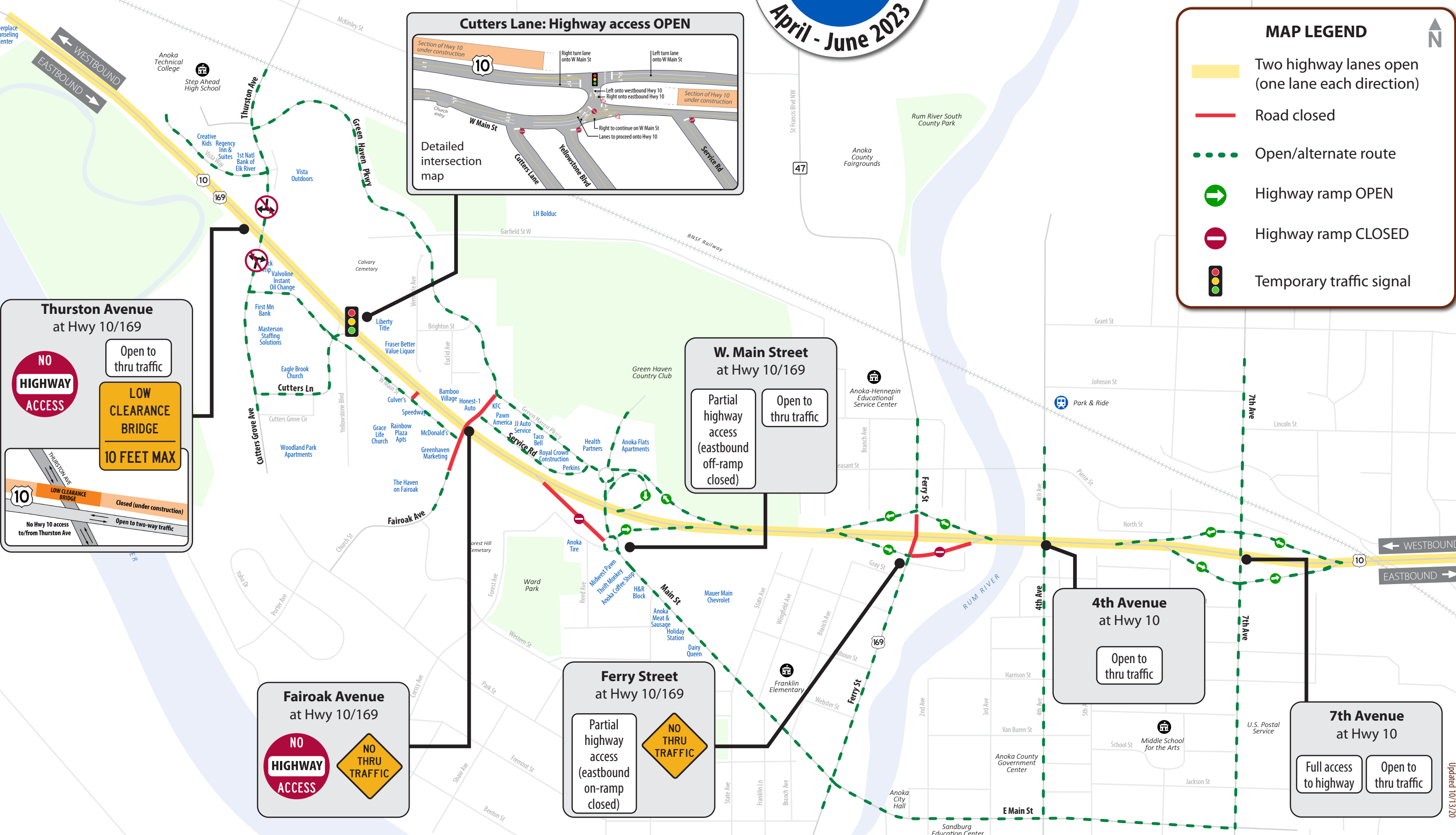


Subject to change. Check website for most current information.

AnokaHwy10.com

MAP LEGEND

- Two highway lanes open (one lane each direction)
- Road closed
- Open/alternate route
- Highway ramp OPEN
- Highway ramp CLOSED
- Temporary traffic signal



Thurston Avenue at Hwy 10/169

NO HIGHWAY ACCESS

Open to thru traffic

LOW CLEARANCE BRIDGE

10 FEET MAX

LOW CLEARANCE BRIDGE Closed (under construction)

No Hwy 10 access to/from Thurston Ave

Open to two-way traffic

W. Main Street at Hwy 10/169

Partial highway access (eastbound off-ramp closed)

Open to thru traffic

Fairoak Avenue at Hwy 10/169

NO HIGHWAY ACCESS

NO THRU TRAFFIC

Ferry Street at Hwy 10/169

Partial highway access (eastbound on-ramp closed)

NO THRU TRAFFIC

4th Avenue at Hwy 10

Open to thru traffic

7th Avenue at Hwy 10

Full access to highway

Open to thru traffic



U.S. Highway 10/169 Improvement Project

Access During Construction

for vehicles less than 10 ft tall



STAGE

2B

June - Sept 2023

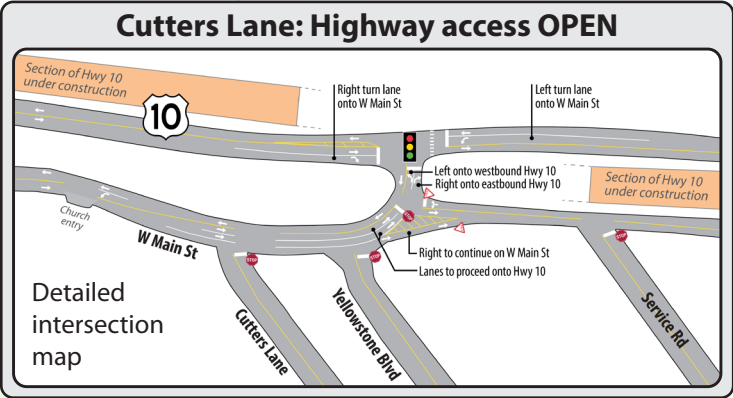


Subject to change. Check website for most current information.

AnokaHwy10.com

MAP LEGEND

- Two highway lanes open (one lane each direction)
- Road closed
- Open/alternate route
- Open during construction
- Highway ramp OPEN
- Highway ramp CLOSED
- Temporary traffic signal



Thurston Avenue at Hwy 10/169

NO HIGHWAY ACCESS

NO THRU TRAFFIC

W. Main Street at Hwy 10/169

Partial highway access (eastbound off-ramp closed)

Open to thru traffic

Opens within first 30 days of Stage 2B

Fairoak Avenue at Hwy 10/169

NO HIGHWAY ACCESS

Open to thru traffic

Ferry Street at Hwy 10/169

Partial highway access (eastbound on-ramp closed)

NO THRU TRAFFIC

4th Avenue at Hwy 10

Open to thru traffic

7th Avenue at Hwy 10

Full access to highway

Open to thru traffic



U.S. Highway 10/169 Improvement Project

Access During Construction

for vehicles less than 10 ft tall



Subject to change. Check website for most current information.

AnokaHwy10.com

MAP LEGEND

Two highway lanes open (one lane each direction)

Road closed

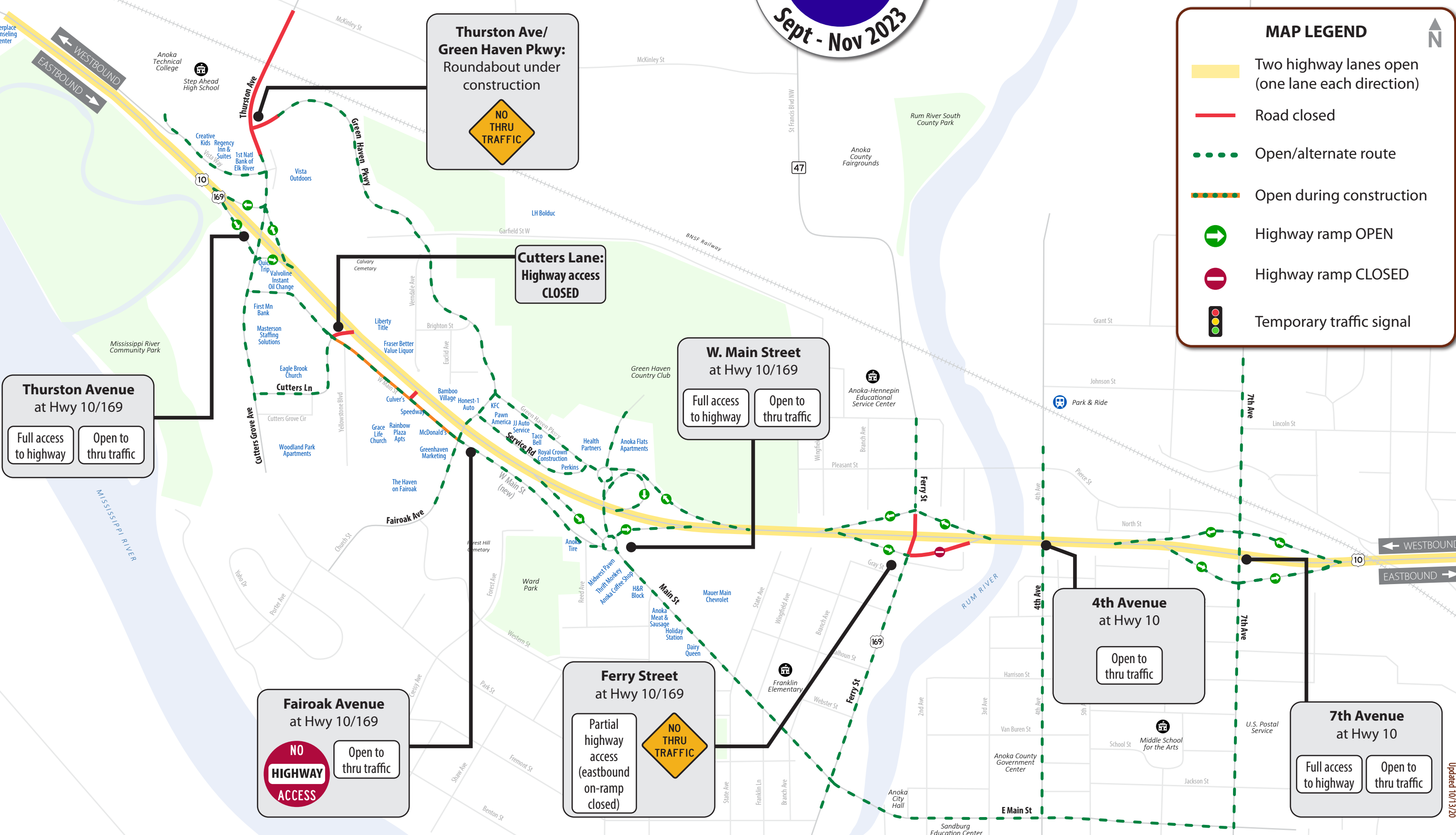
Open/alternate route

Open during construction

Highway ramp OPEN

Highway ramp CLOSED

Temporary traffic signal



Updated 10/13/20