



U.S. Highway 10/169 Improvement Project



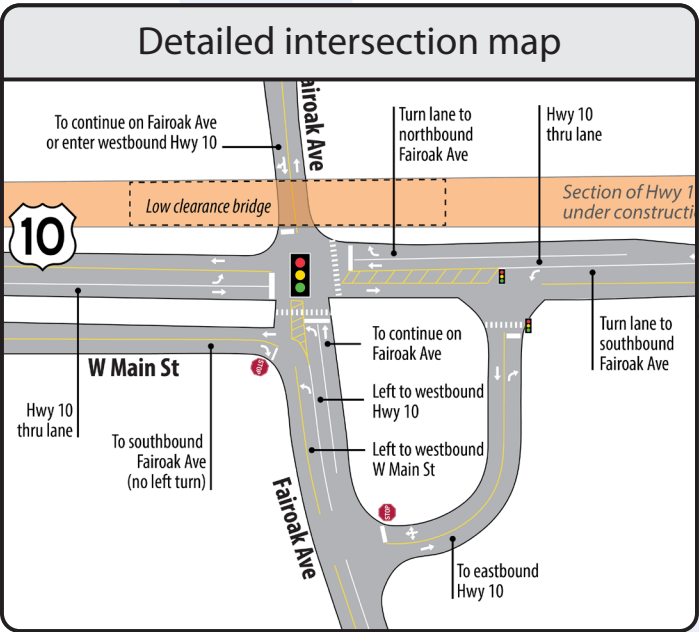
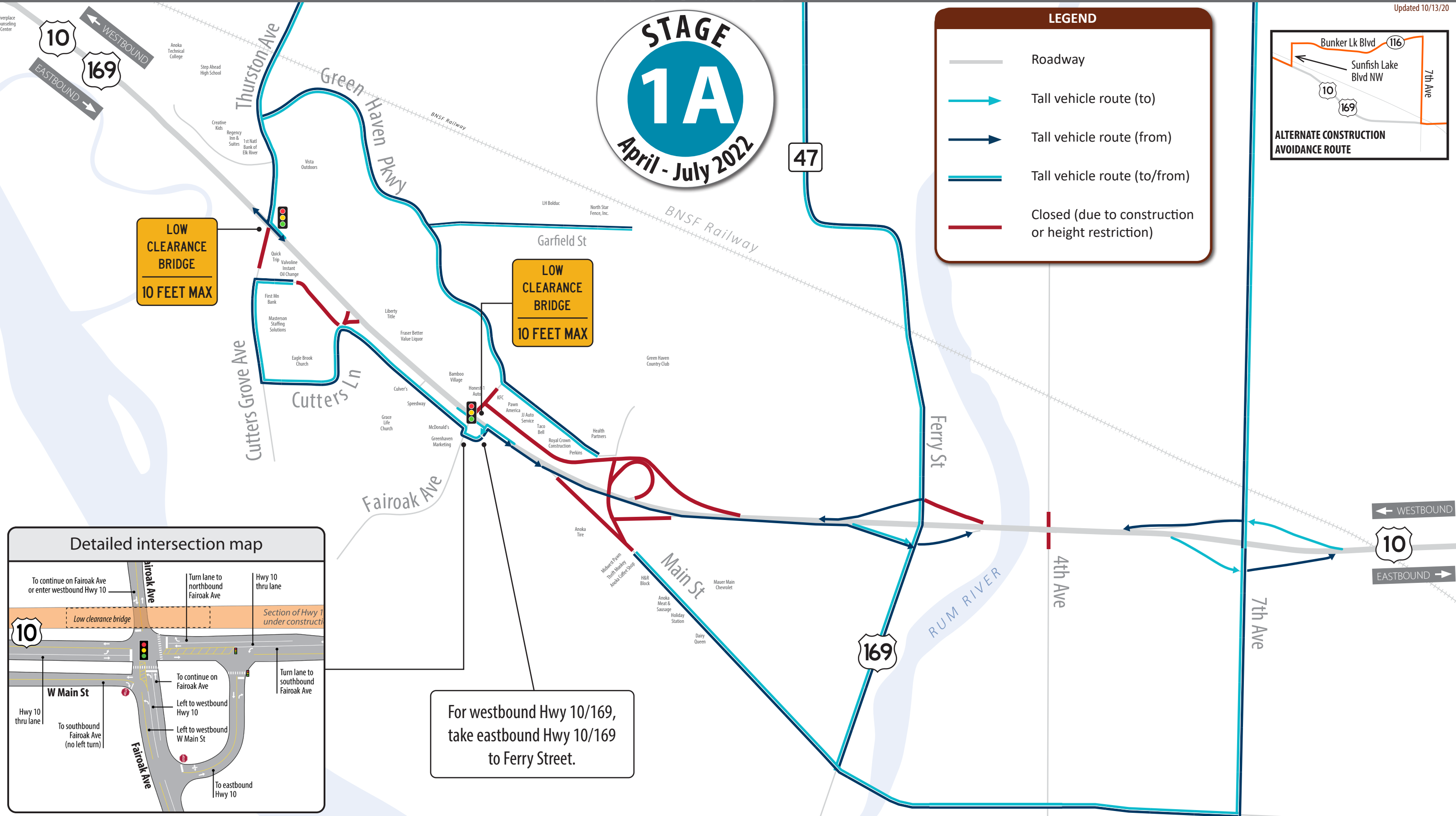
Tall Vehicle Routes (>10 ft)



Subject to change. Check website for most current information.

AnokaHwy10.com

Updated 10/13/20



For westbound Hwy 10/169, take eastbound Hwy 10/169 to Ferry Street.



U.S. Highway 10/169 Improvement Project



Tall Vehicle Routes (>10 ft)



Subject to change. Check website for most current information.

AnokaHwy10.com

Updated 10/13/20



LEGEND

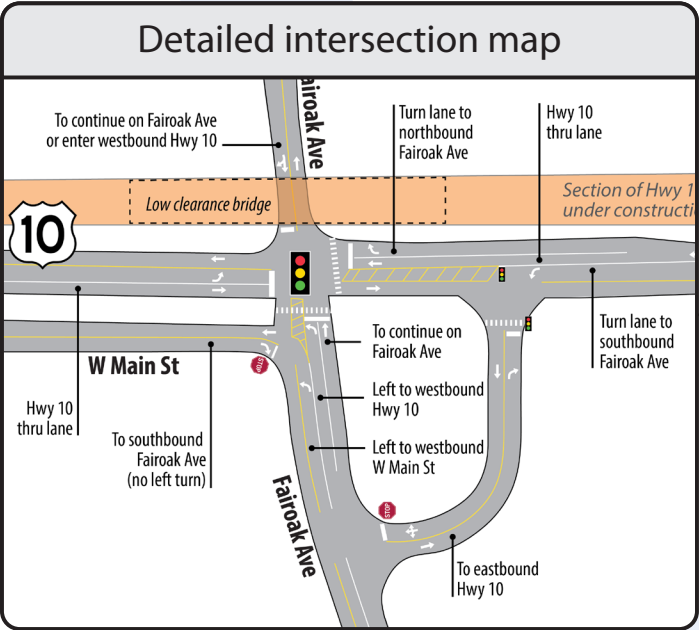
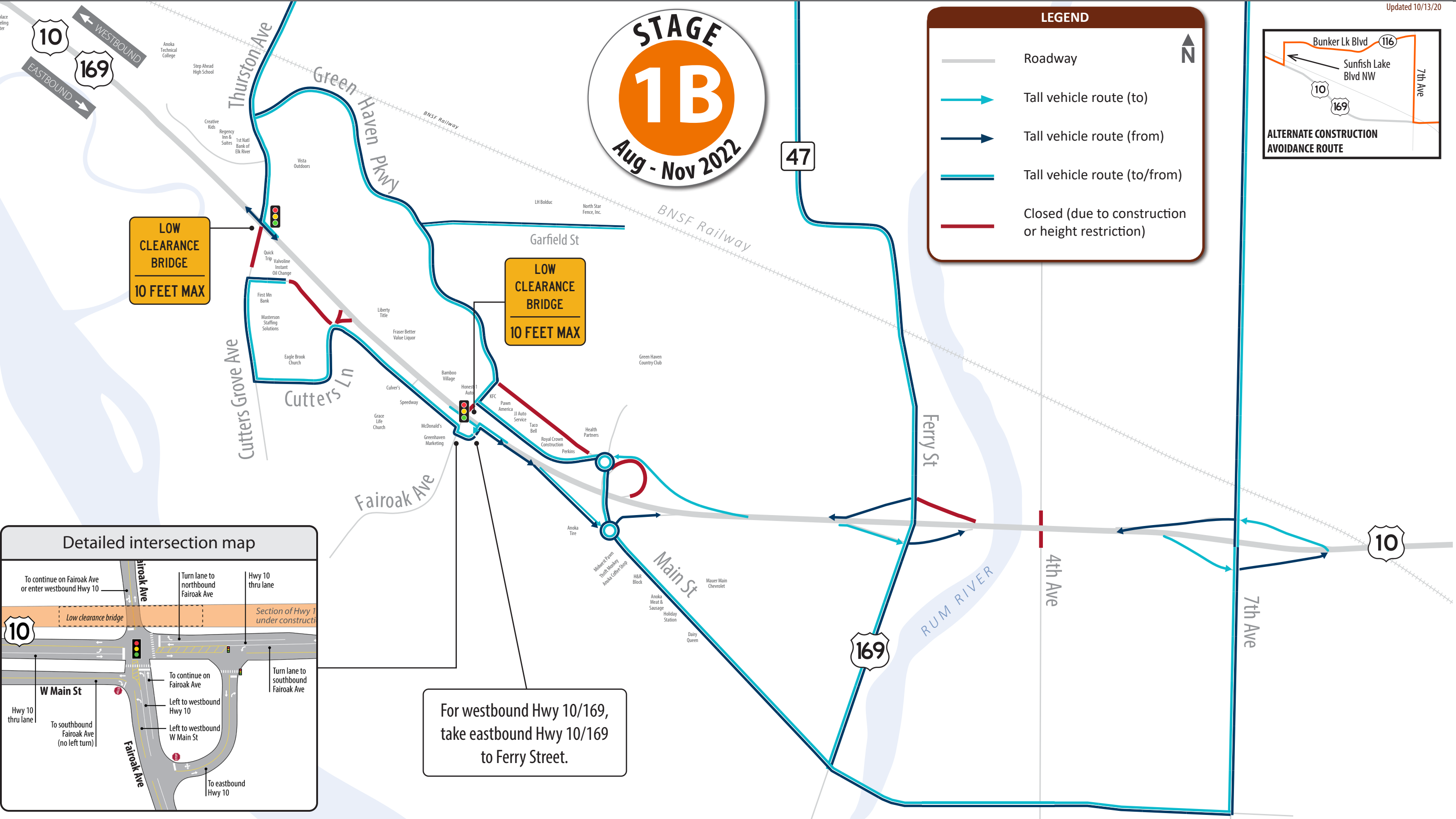
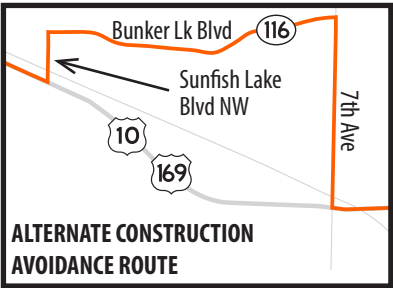
Roadway

Tall vehicle route (to)

Tall vehicle route (from)

Tall vehicle route (to/from)

Closed (due to construction or height restriction)



For westbound Hwy 10/169, take eastbound Hwy 10/169 to Ferry Street.



U.S. Highway 10/169 Improvement Project



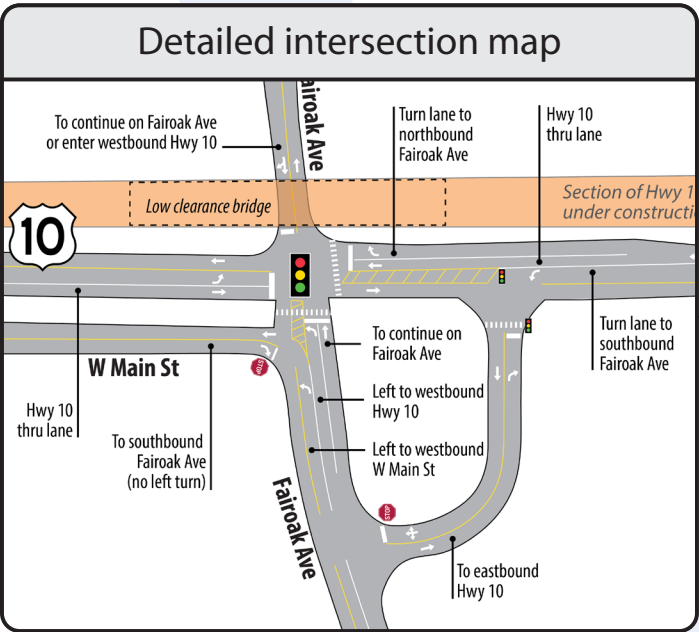
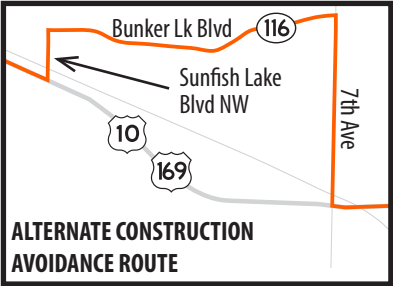
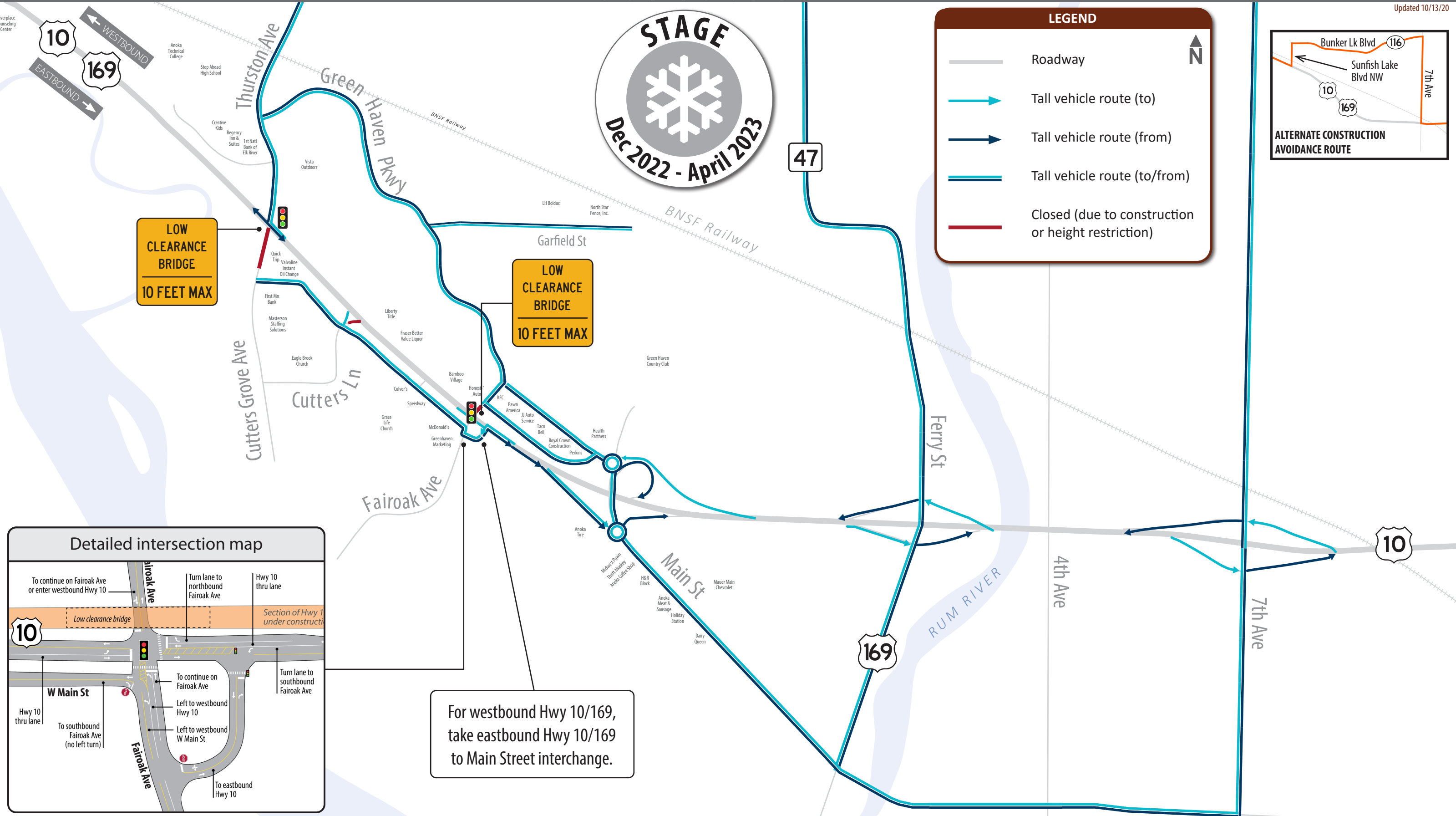
Tall Vehicle Routes (>10 ft)



Subject to change. Check website for most current information.

AnokaHwy10.com

Updated 10/13/20



For westbound Hwy 10/169, take eastbound Hwy 10/169 to Main Street interchange.



U.S. Highway 10/169 Improvement Project



Tall Vehicle Routes (>10 ft)



Subject to change. Check website for most current information.

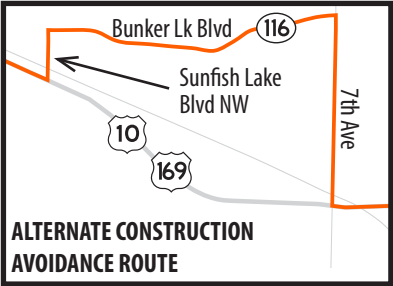
AnokaHwy10.com

Updated 10/13/20



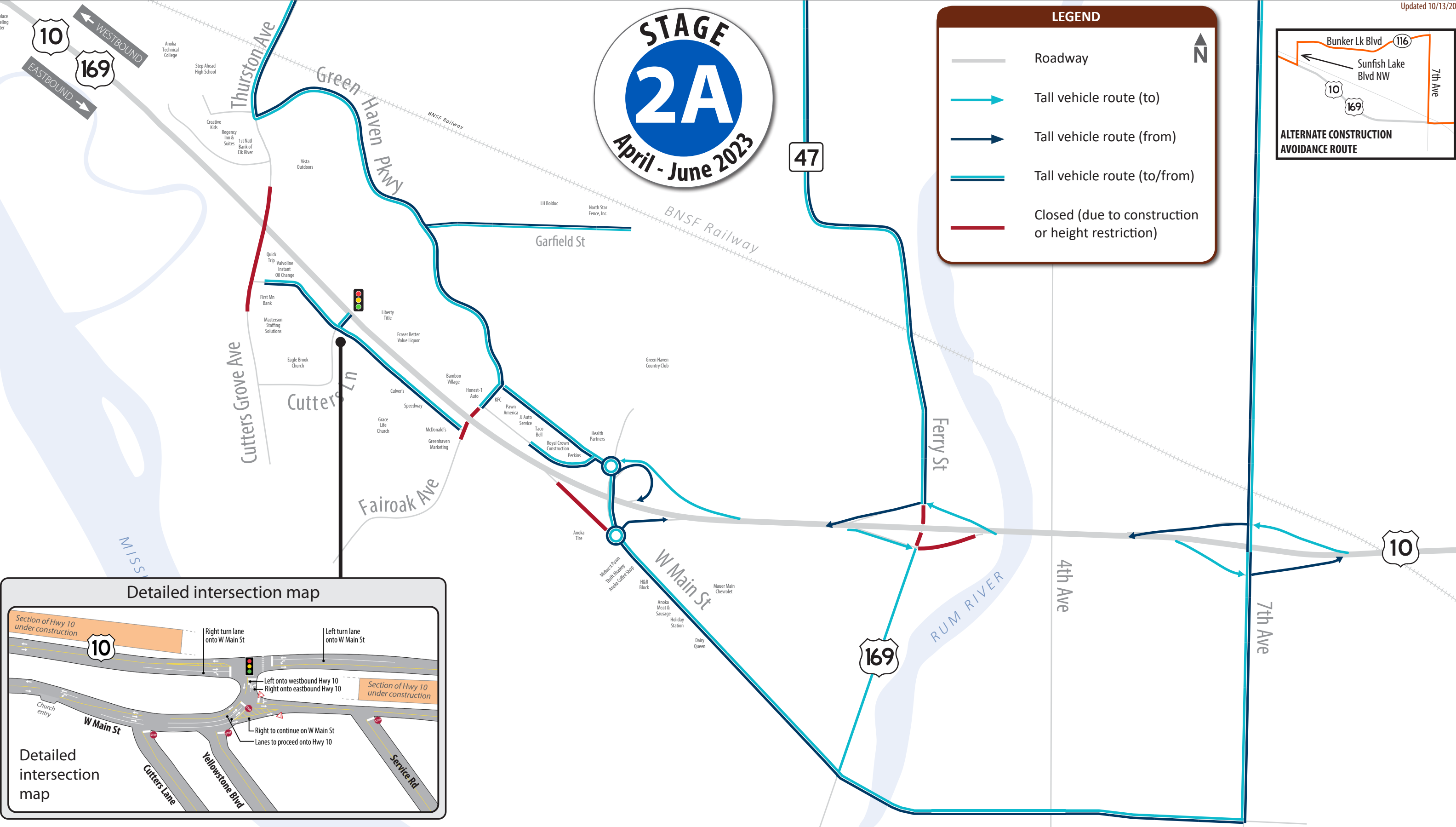
LEGEND

- Roadway
- Tall vehicle route (to)
- Tall vehicle route (from)
- Tall vehicle route (to/from)
- Closed (due to construction or height restriction)



Detailed intersection map

Detailed intersection map





U.S. Highway 10/169 Improvement Project



Tall Vehicle Routes (>10 ft)



Subject to change. Check website for most current information.

AnokaHwy10.com

Updated 10/13/20



LEGEND

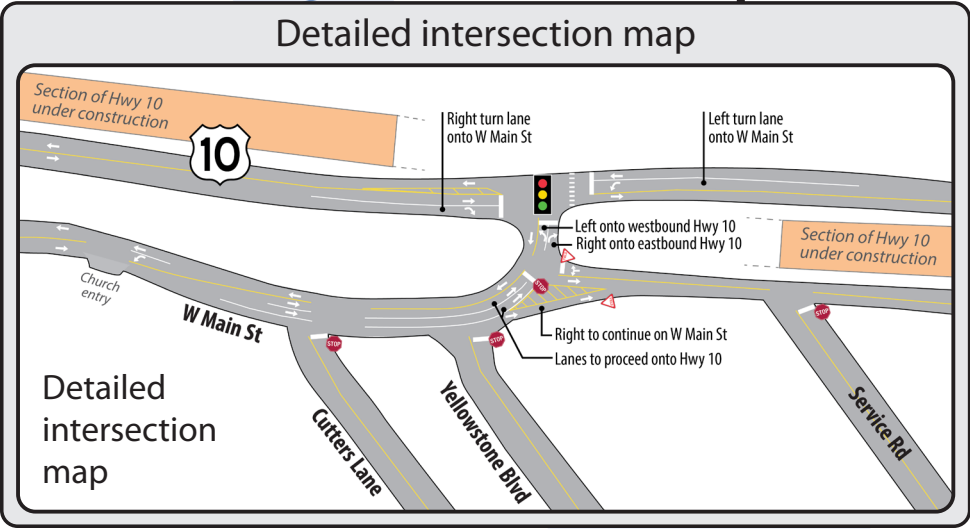
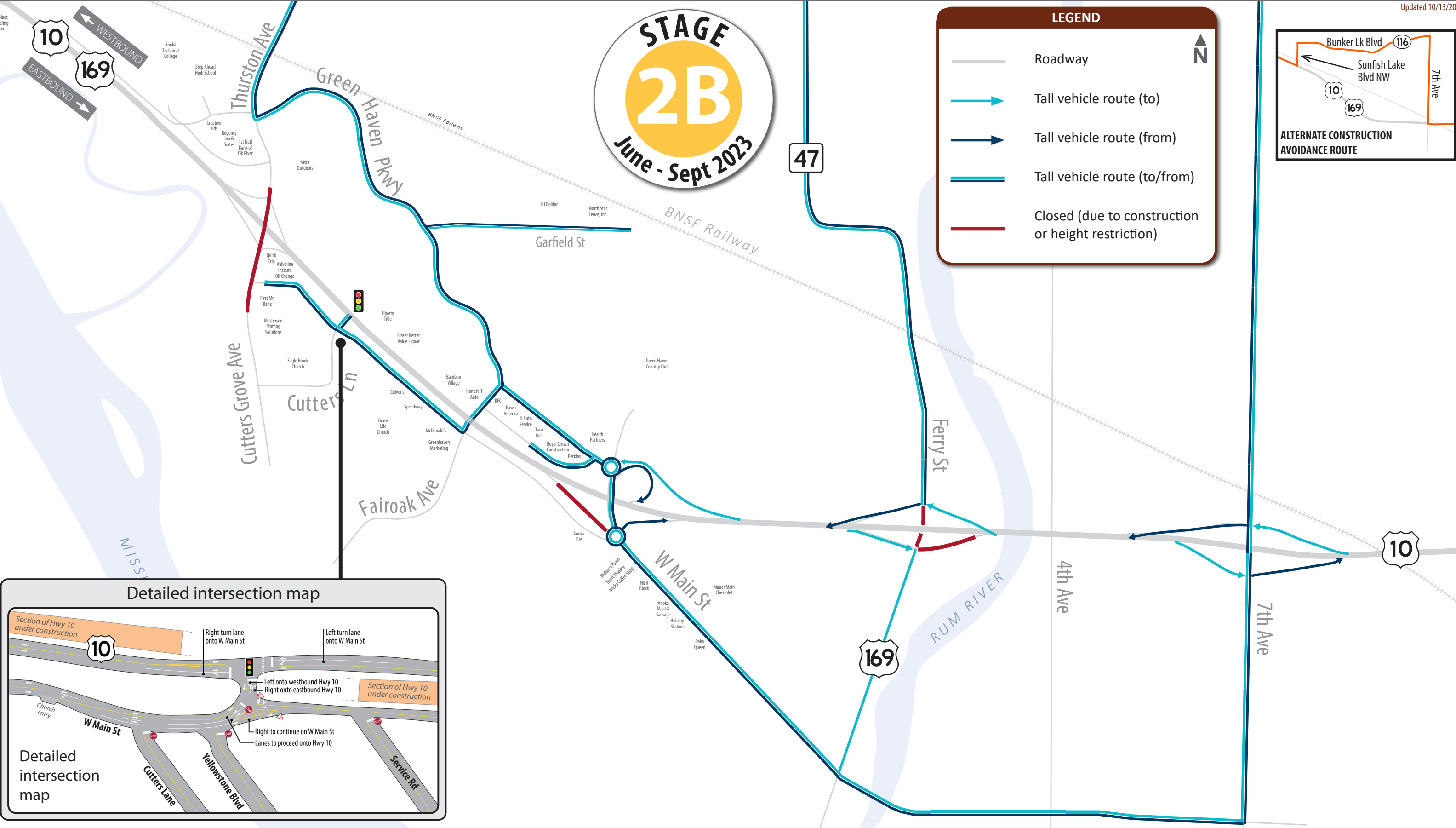
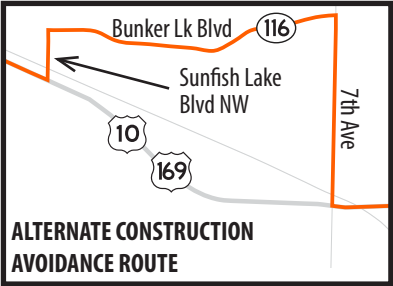
Roadway

Tall vehicle route (to)

Tall vehicle route (from)

Tall vehicle route (to/from)

Closed (due to construction or height restriction)





U.S. Highway 10/169 Improvement Project



Tall Vehicle Routes (>10 ft)



Subject to change. Check website for most current information.

AnokaHwy10.com

Updated 10/13/20



LEGEND

Roadway

Tall vehicle route (to)

Tall vehicle route (from)

Tall vehicle route (to/from)

Closed (due to construction or height restriction)

