



U.S. Highway 10/169 Improvement Project



Tall Vehicle Routes (>10 ft)



Subject to change. Check website for most current information.

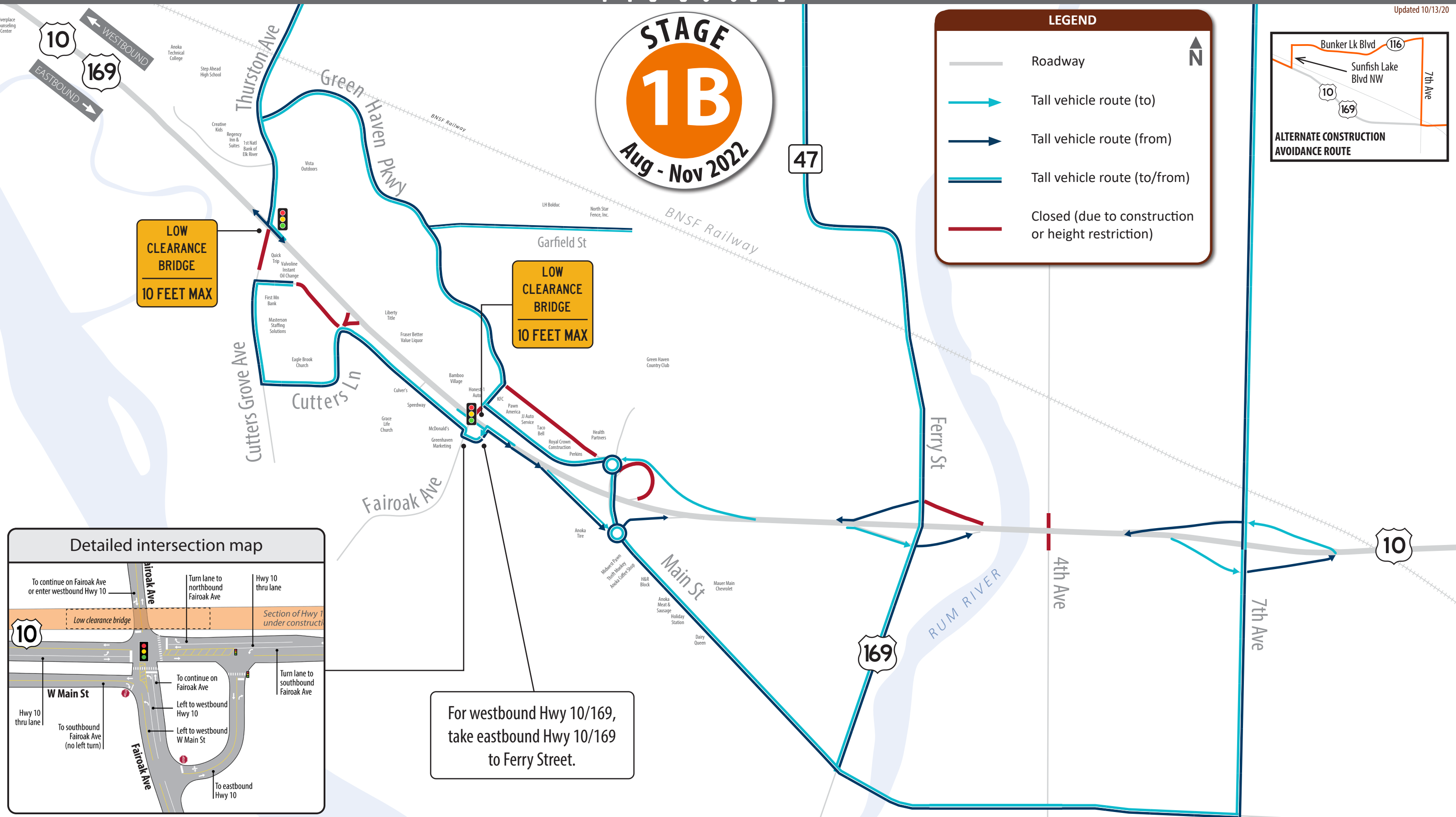
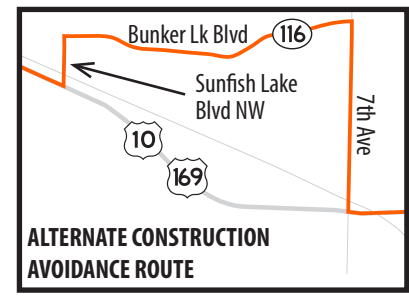
AnokaHwy10.com

Updated 10/13/20



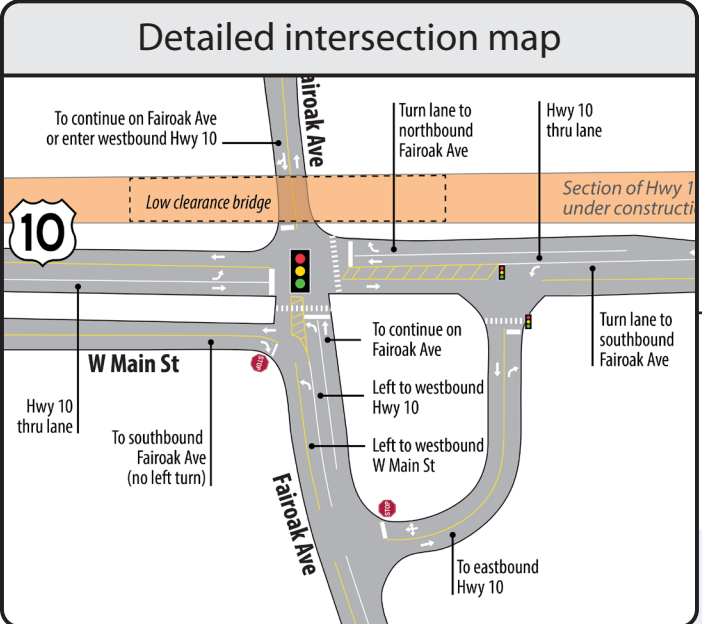
LEGEND

- Roadway
- Tall vehicle route (to)
- Tall vehicle route (from)
- Tall vehicle route (to/from)
- Closed (due to construction or height restriction)



LOW CLEARANCE BRIDGE
10 FEET MAX

LOW CLEARANCE BRIDGE
10 FEET MAX



For westbound Hwy 10/169, take eastbound Hwy 10/169 to Ferry Street.