



U.S. Highway 10/169 Improvement Project

Access During Construction for vehicles less than 10 ft tall

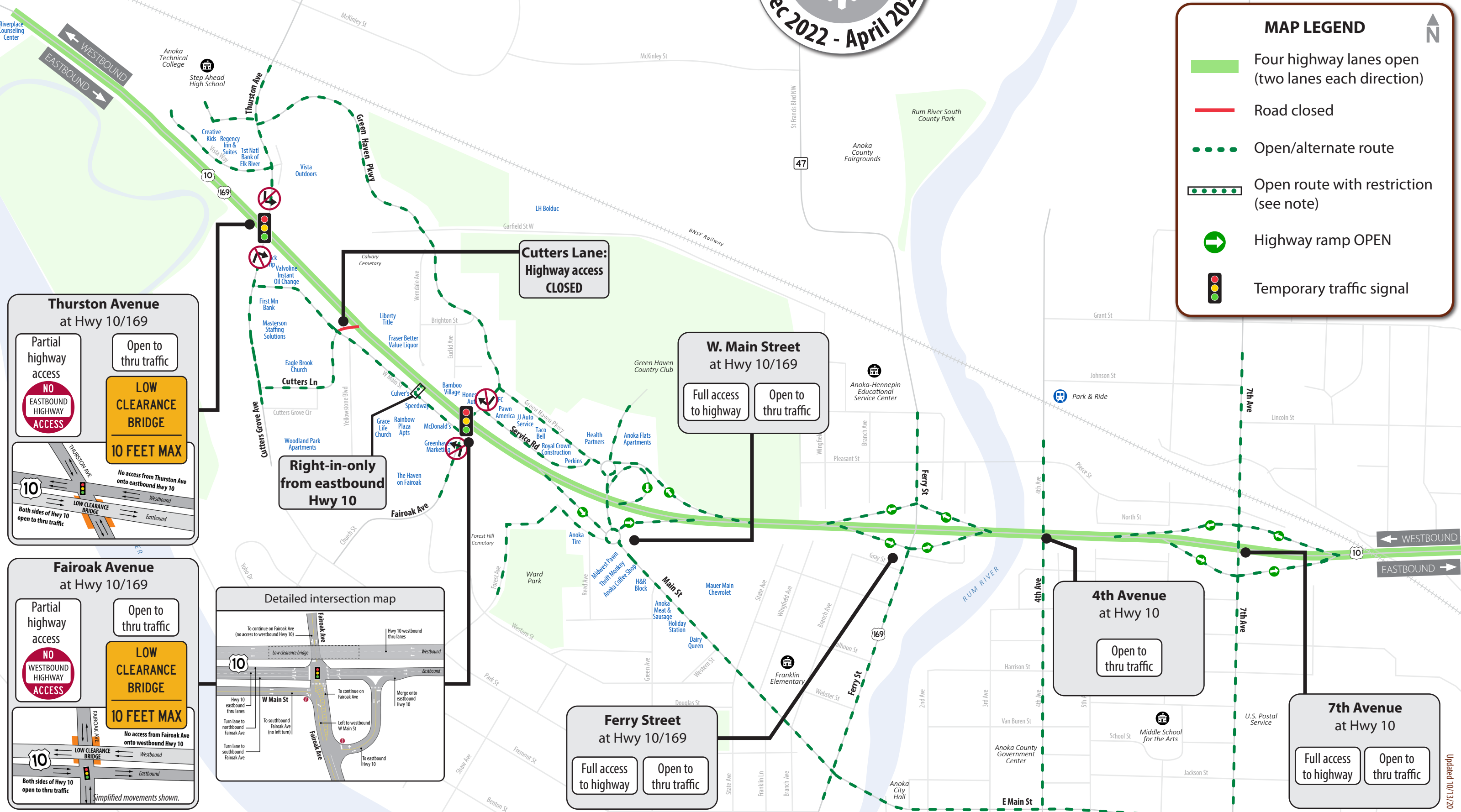


Subject to change. Check website for most current information.

AnokaHwy10.com

MAP LEGEND

- Four highway lanes open (two lanes each direction)
- Road closed
- Open/alternate route
- Open route with restriction (see note)
- Highway ramp OPEN
- Temporary traffic signal



Thurston Avenue at Hwy 10/169

Partial highway access

NO EASTBOUND HIGHWAY ACCESS

Open to thru traffic

LOW CLEARANCE BRIDGE 10 FEET MAX

No access from Thurston Ave onto eastbound Hwy 10

Both sides of Hwy 10 open to thru traffic

Fairoak Avenue at Hwy 10/169

Partial highway access

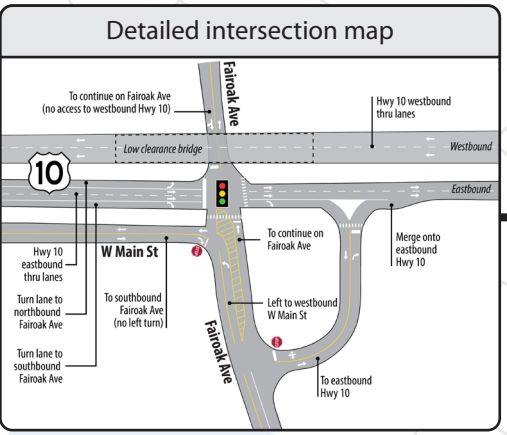
NO WESTBOUND HIGHWAY ACCESS

Open to thru traffic

LOW CLEARANCE BRIDGE 10 FEET MAX

No access from Fairoak Ave onto westbound Hwy 10

Both sides of Hwy 10 open to thru traffic



Cutters Lane: Highway access CLOSED

W. Main Street at Hwy 10/169

Full access to highway

Open to thru traffic

Ferry Street at Hwy 10/169

Full access to highway

Open to thru traffic

4th Avenue at Hwy 10

Open to thru traffic

7th Avenue at Hwy 10

Full access to highway

Open to thru traffic