



Hwy 169 & CR 4 Improvements Overview



Estimated Construction Cost **\$42.3M**

Project Goal

Provide a safe and reliable transportation network to improve community access and connectivity, rural safety, and strengthen rural access to economic opportunities and disadvantaged areas.

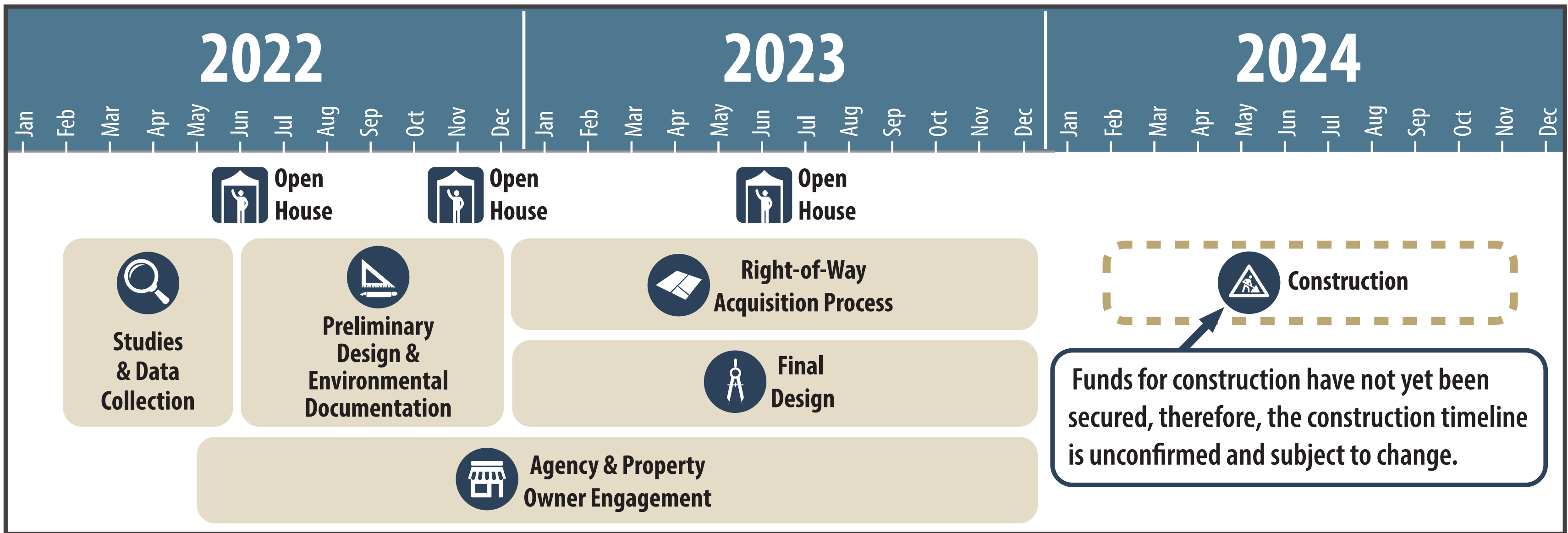
Existing Issues

- » Today, over 50,000 vehicles per day traverse this intersection
- » Downtown Zimmerman is gridlocked in the morning and evening peak hours, with queues extending over a mile
- » Highway 169 backs up for nearly a mile during recreational peaks
- » Crash rates nearly 5x state average | Serious crash rate 6x state average
- » Pedestrian and bicycle facilities non-existent

Investment Results

- » 96-98% decrease in network delays
- » 97-99% decrease in serious conflicts
- » Serves the forecasted (2045) 75,000 vehicles per day through this intersection
- » Addition of bicycle and pedestrian facilities
- » Benefit/Cost Ratio 2.14 (Benefits realized are more than two times the investment)
- » Highway 169 will serve the regional, freight, and tourism needs safely and reliably

The region’s ongoing significant investment on the Highway 169 Redefine project in Elk River significantly improves the travel speed and reliability of the corridor. When that project is completed, increased pressures will be focused on this intersection in Zimmerman – the last remaining signal on the 75-mile segment between Lake Mille Lacs and Rogers.



Scan the QR code to visit the project website or go to Hwy169andCR4.com

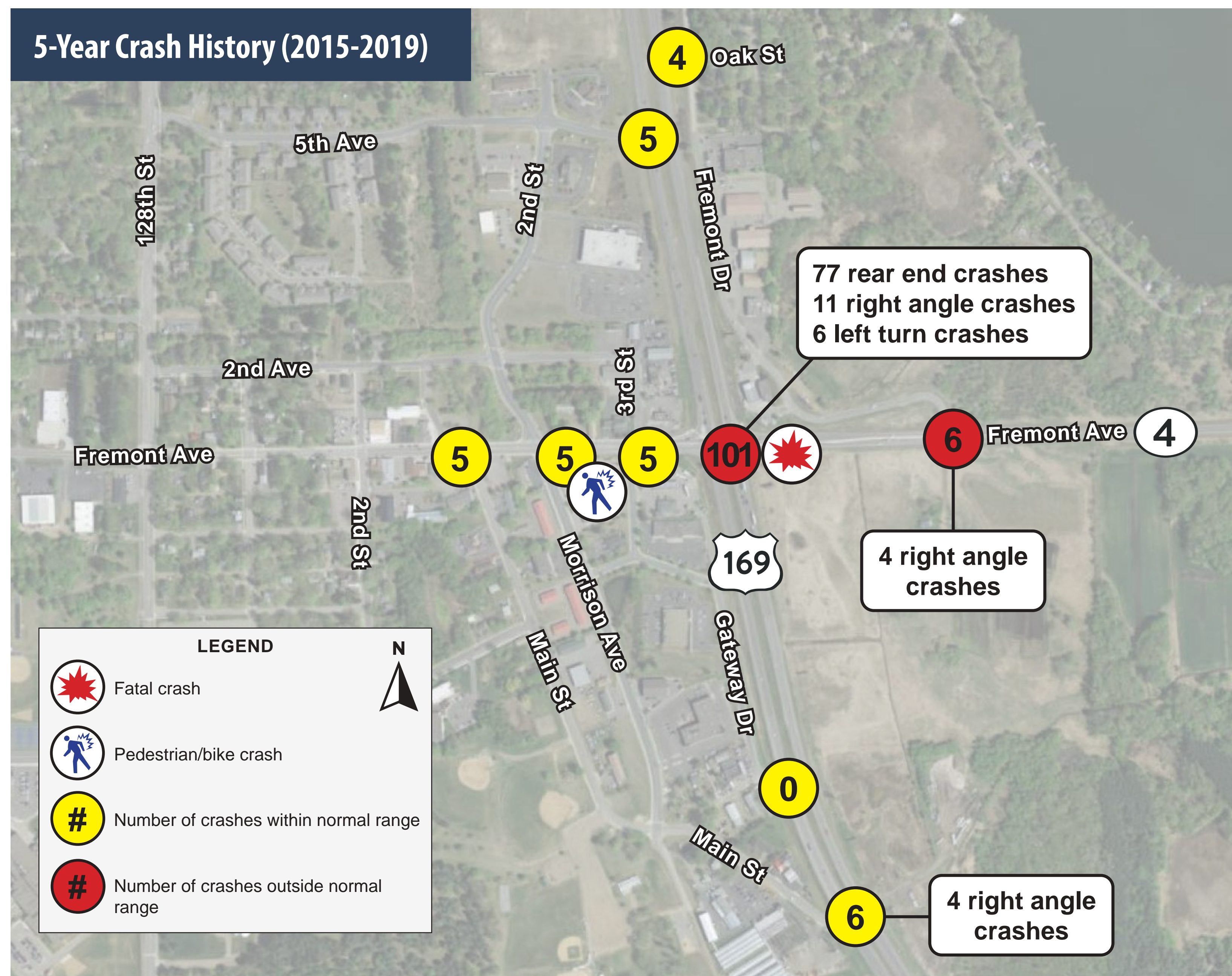


Existing Conditions



By 2045, daily traffic is anticipated to increase from **50,000 vehicles** to **75,000 vehicles** with **backups exceeding 1 mile.**

This intersection is ranked by MnDOT as the **2ND MOST UNSAFE** intersection in central Minnesota.



5X the Statewide average crash rate

6X the Statewide average serious crash rate

101 crashes at the intersection in 5 years (2015-2019)

 **70% rear end crashes**

 **23% angled or left-turn crashes**



June 2022 Open House Summary

An open house was held on June 14, 2022 which introduced this new phase of the project and presented three preliminary interchange design concepts for feedback. Informational materials and feedback opportunities were also available on the project website June 14 - 30. Approximately 45 people attended the open house and 130 comments were collected in-person and online.

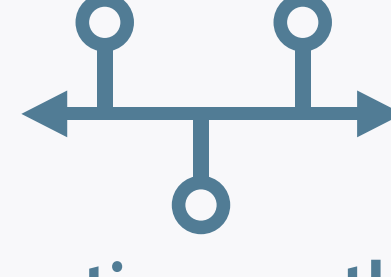
KEY THEMES



Majority support roundabouts



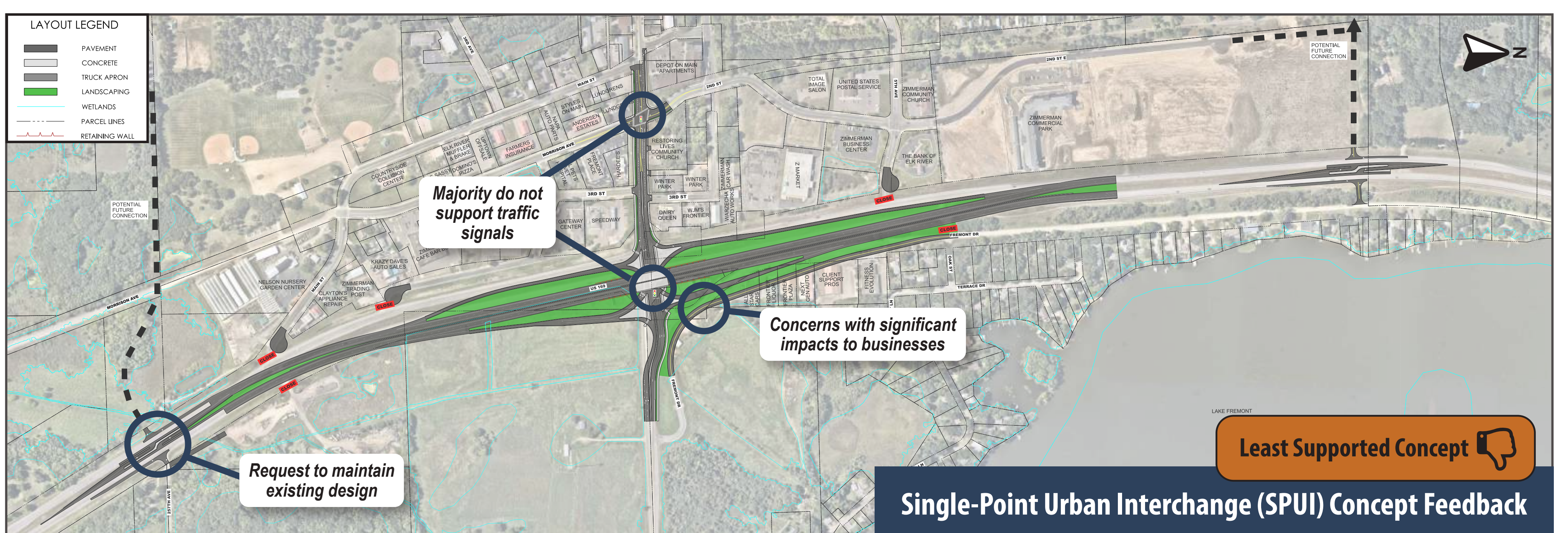
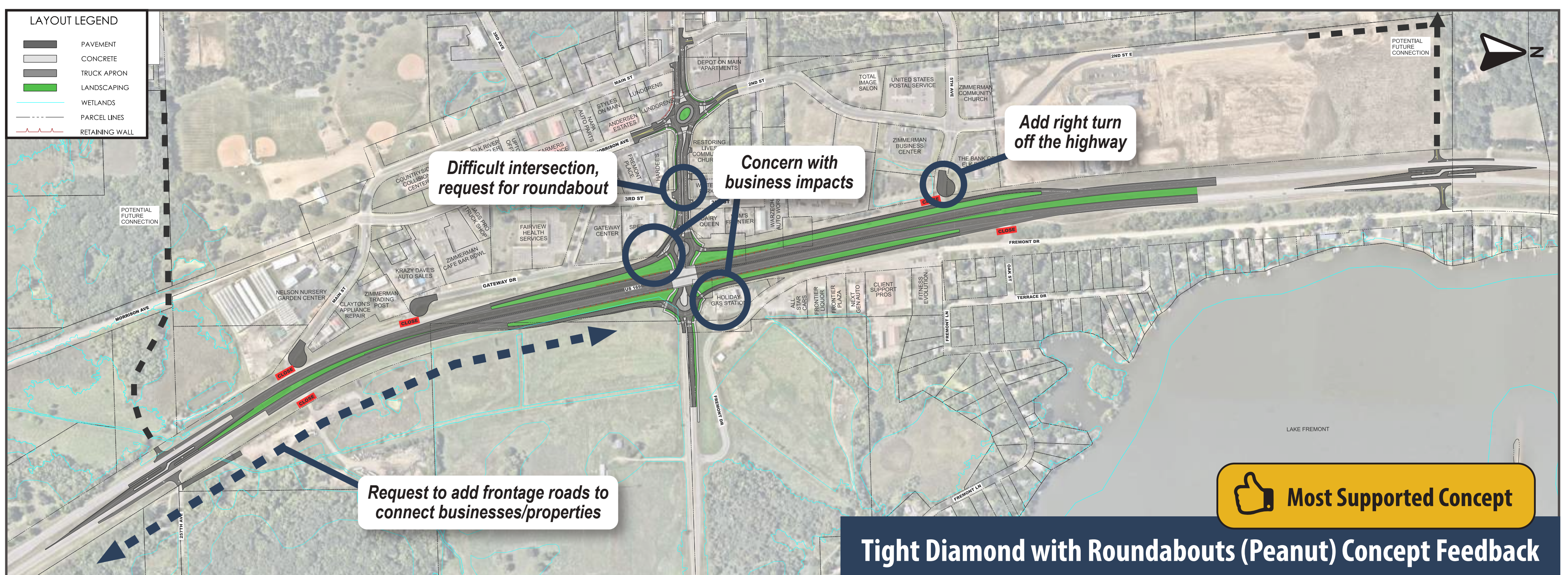
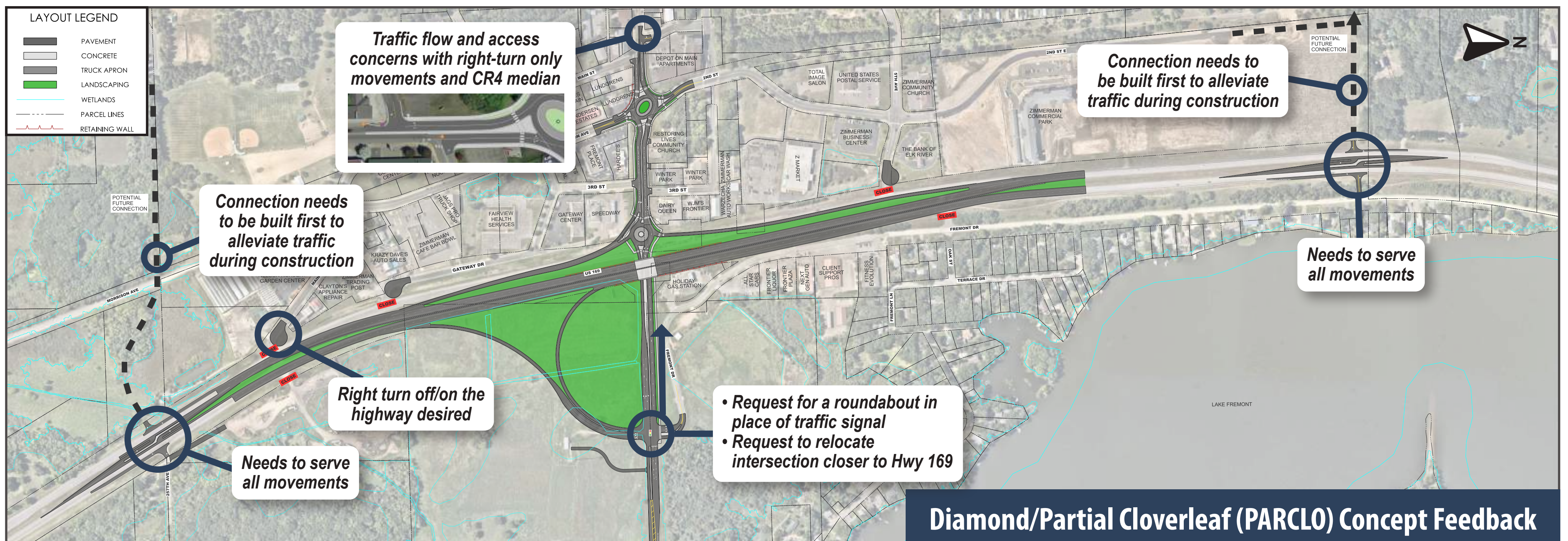
Majority do not support traffic signals



Local connections north and south of CR 4 are important long term and during interchange construction



Minimizing impacts to businesses is a priority



Other General Feedback Received

- Request for roundabouts at most intersections along CR 4 between 4th St W and 120th St NW
- Consider incorporating public spaces and art
- Request for overpasses with connecting frontage roads for intersections far north and south of intersection



Preferred Concept: Northern Project Area



What's changed since the last open house?



These improvements help relieve County Road 4 traffic and mitigate closure of access to/from Highway 169 at 5th Avenue



LAYOUT LEGEND

- PROPOSED ROADWAY
- RAISED CONC. MEDIAN, CURB & GUTTER
- PAVED SHOULDERS
- SEWAGE / DRIVEWAYS
- TRAIL
- LANDSCAPING/GREEN SPACE
- BRIDGE
- CONCRETE BARRIER
- AMENITY ZONE
- GRAVEL DRIVEWAY/AGGREGATE SHOULDER
- PROPOSED POND
- RETAINING WALL
- MINOT TYPE 31 GUARDRAIL
- TEMPORARY EASEMENT
- PROPOSED RIGHT-OF-WAY
- EXISTING RIGHT-OF-WAY
- EXISTING PROPERTY LINE
- CONSTRUCTION LIMITS
- APPROX. CITY LIMITS
- PROPOSED OVERHEAD SIGNS
- MINOT 9-40 LIGHT POLE
- CONNEXUS ENERGY (SHERBURNE COUNTY) LIGHT POLE
- INPLACE SIGNAL
- ACCESS CLOSURE
- ALL-WAY STOP CONTROLLED INTERSECTION

The extension of Morrison Avenue as a paved roadway along the recently constructed Great Northern Trail with a new connection at 255th Avenue

The addition of a frontage road from the 255th Avenue highway access point to 257th Avenue

Fremont Drive access moved west to the interchange roundabout

Project limit now extends farther south to 255th Avenue with 3/4 access at the 255th Avenue intersection

Example of 3/4 access

These improvements help relieve County Road 4 traffic and mitigate closure of access to/from Hwy 169 at Gateway Drive, Main Street, and 257th Avenue



Why Roundabouts?



ROUNDAABOUT BENEFITS

A **single-lane roundabout** is designed to improve safety for all users.



Simplified Decision Making

Crosswalks are set back to increase pedestrian visibility and allowing drivers to focus on pedestrians crossing separate from vehicular traffic in the roundabout.



Pedestrian Refuge

A **splitter/median island** on each approach roadway allows pedestrians to focus on crossing one lane of traffic at a time.



Safety

- 15-20 mph vehicle design speed
- 2 pedestrian/vehicle interaction points compared to 6 at a signalized intersection.
- Pedestrian crossings are half the distance of a traditional intersection.
- Overall increased human interaction between drivers and pedestrians.
- 87% fewer pedestrian injury crashes at a roundabout compared to a signalized intersection.¹

Increased Yield Rates

83% of vehicles yield to peds in single-lane roundabouts.²



Give 'em a brake

State law requires that traffic entering and exiting a roundabout **must yield to pedestrians** in the crosswalk.





Feedback & Next Steps



We Want Your Feedback!

Submit your feedback via the comment cards or on the project website's interactive comment map. We will accept online feedback now through **Wednesday, Dec. 14.**

What's Next?

Following this open house, the project team will collect your feedback and use it to refine the project's design. Another open house will be held in Summer 2023 to share the final design and discuss what to expect during construction including staging, traffic control, schedule and impacts.

Stay connected!

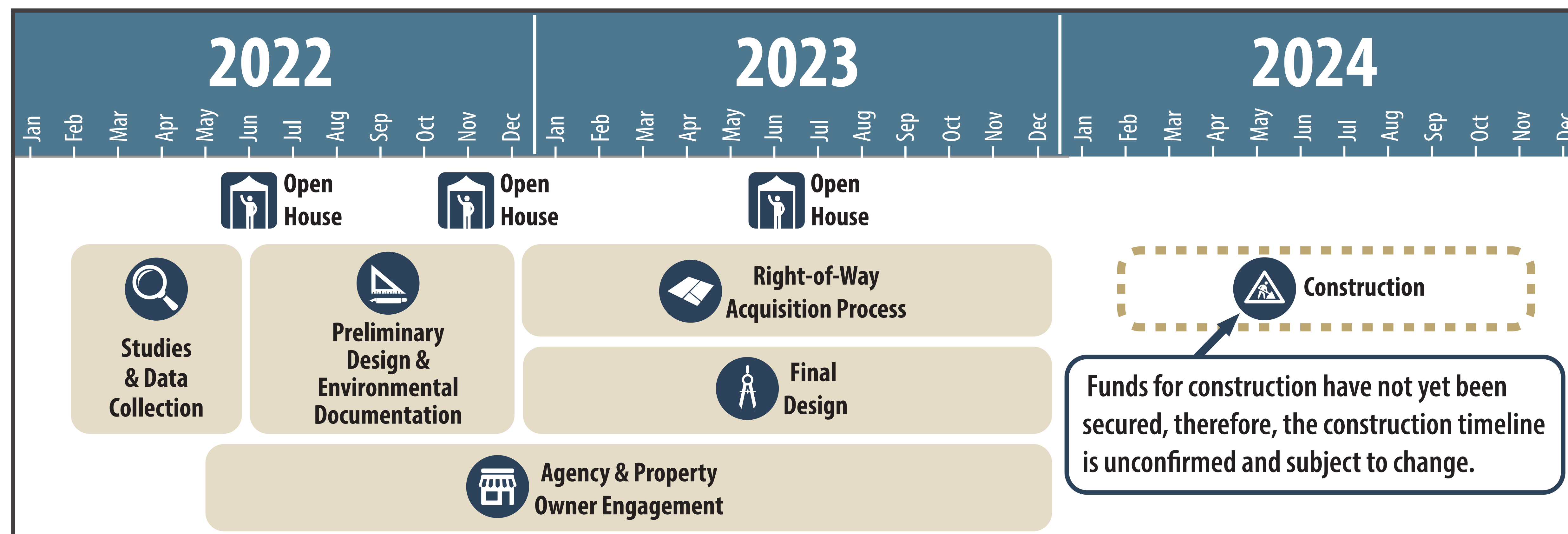
Scan the QR code to visit the project website and sign up for email updates! Hwy169andCR4.com



Project Hotline
763-463-7818

Project Email
Hwy169andCR4@bolton-menk.com

Project Schedule





OPEN HOUSE THIS WAY



OPEN HOUSE THIS WAY