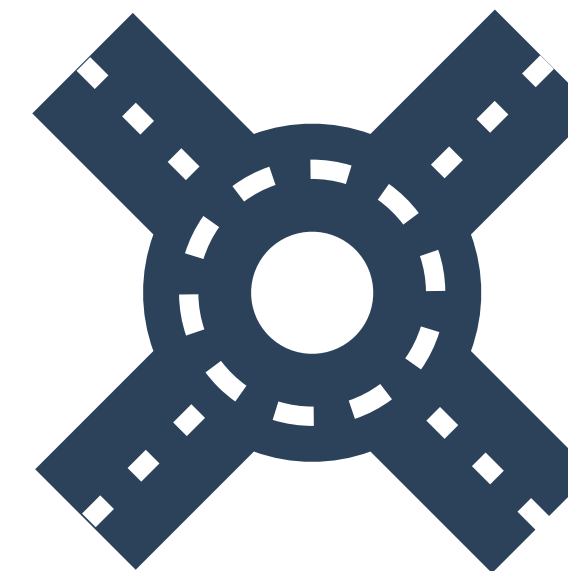
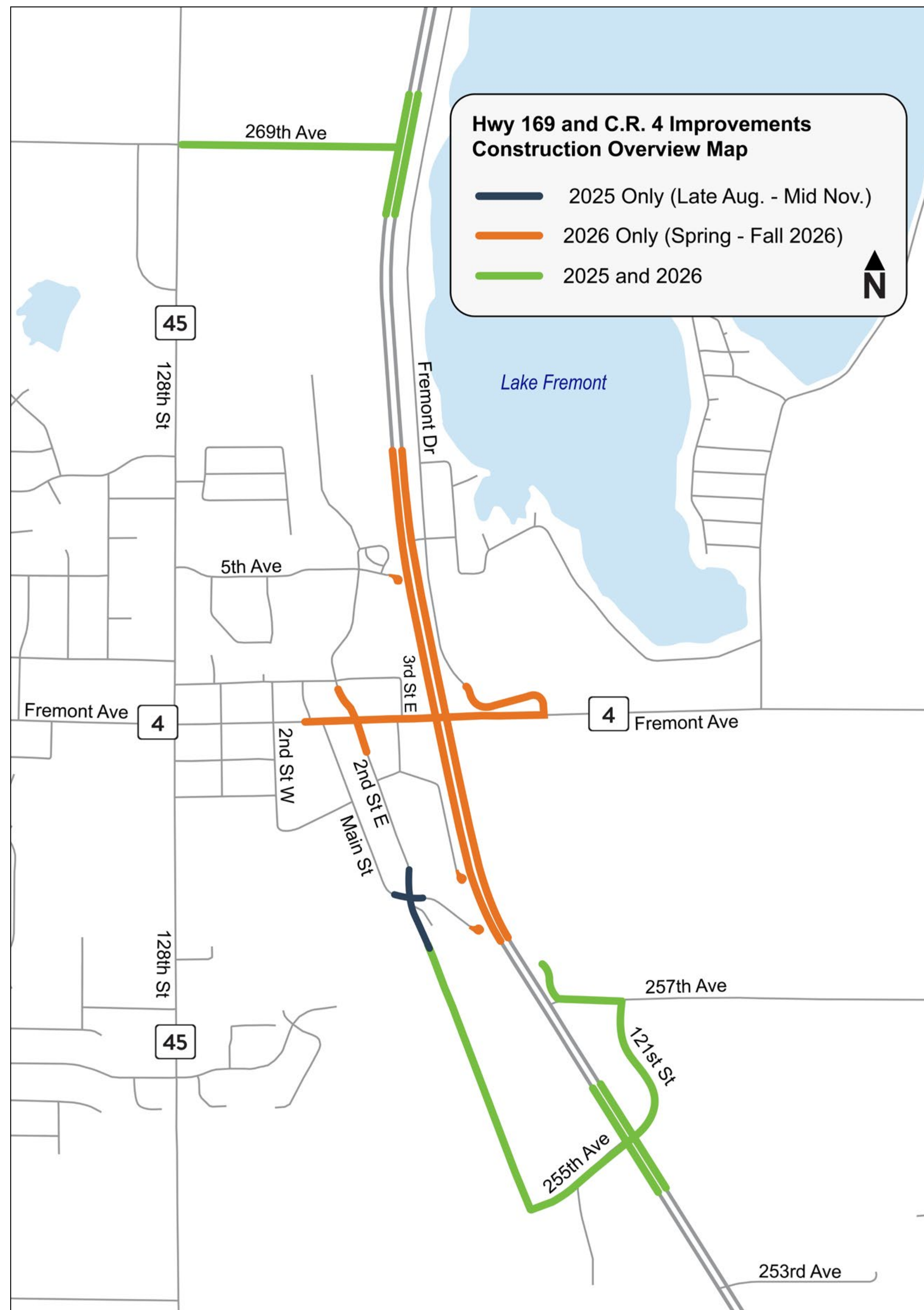




Project Overview



Sherburne County, in partnership with MnDOT and the City of Zimmerman, is building an **interchange at the intersection of Highway 169 and County Road 4**. Local roadway improvements will also be constructed as part of this project to ensure all users can travel through the area safely and efficiently.

Existing Issues

- » One of the most dangerous intersections in Minnesota with 100+ crashes between 2015 and 2019
- » Mile-long traffic backups during rush hour and the summer tourism season
- » Lack of sidewalks and bike trails

Project Benefits

- » Reduces traffic congestion by 98%
- » Reduces risk of serious crashes by 99%
- » Improved pedestrian, bicycle and vehicle connections to the highway and community
- » Preserves all existing businesses



How Did We Get Here?



Gathered feedback on existing conditions and design options.

We are here!



Gathered feedback on the preferred design concept.

Gathered feedback on the final design, design aesthetics and draft construction plans.



Review a larger version of the design on the project website!



Roundabouts

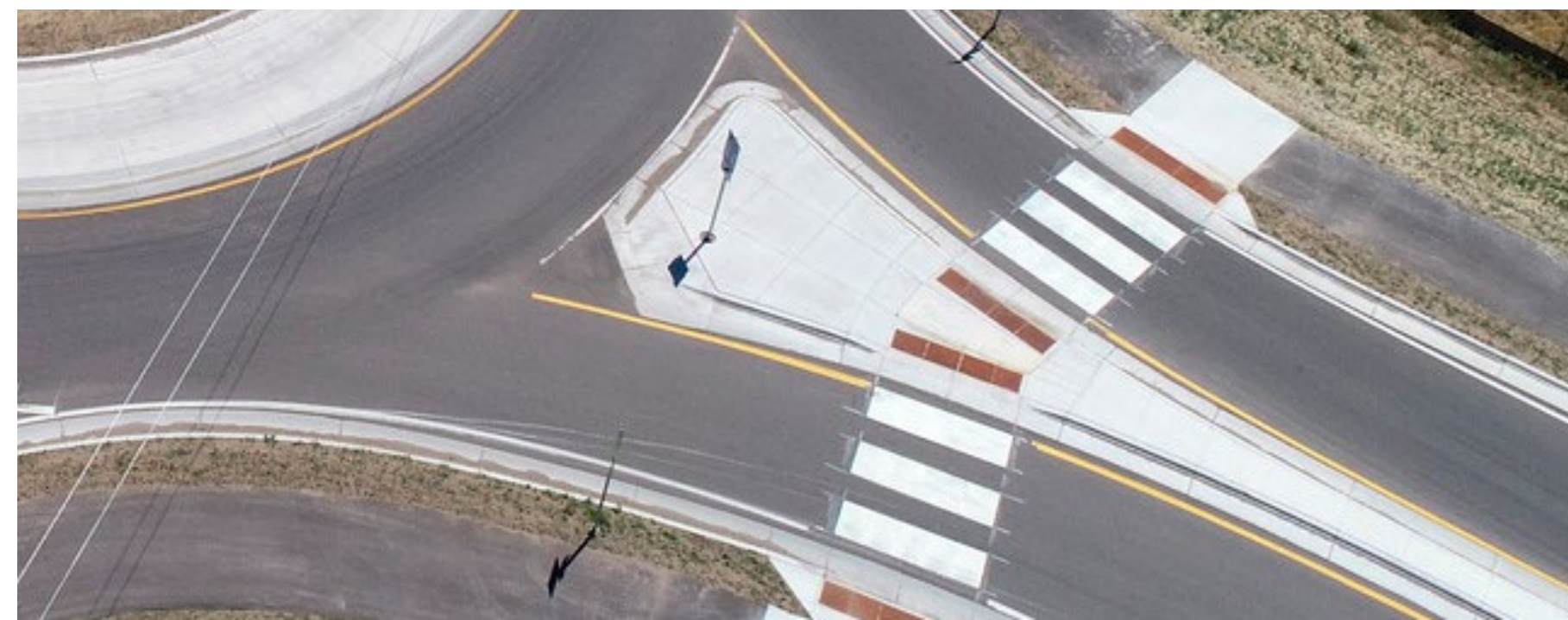


ROUNDABOUT SAFETY: Pedestrians and Bicyclists



Simplified Decision Making

Crosswalks are set back to increase pedestrian visibility and allow drivers to focus on pedestrians crossing separate from vehicle traffic in the roundabout.



Pedestrian Refuge

The **center median** allows pedestrians to cross one lane of traffic at a time.



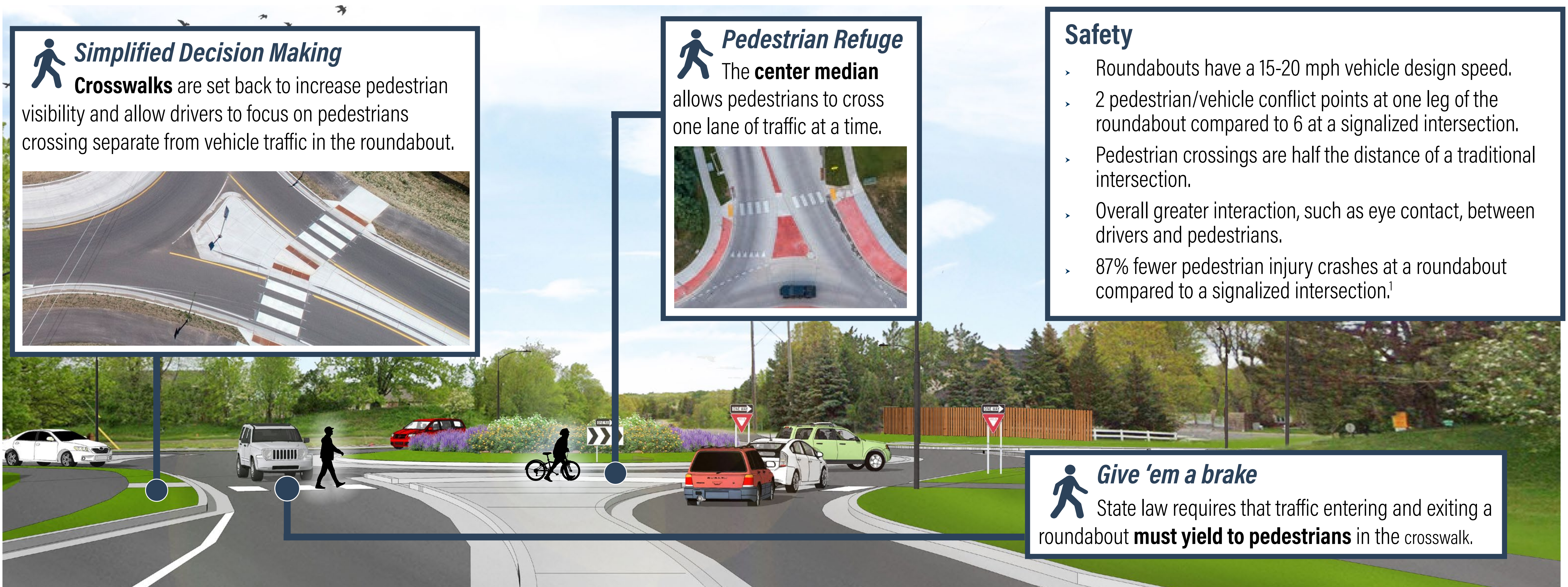
Safety

- › Roundabouts have a 15-20 mph vehicle design speed.
- › 2 pedestrian/vehicle conflict points at one leg of the roundabout compared to 6 at a signalized intersection.
- › Pedestrian crossings are half the distance of a traditional intersection.
- › Overall greater interaction, such as eye contact, between drivers and pedestrians.
- › 87% fewer pedestrian injury crashes at a roundabout compared to a signalized intersection.¹



Give 'em a brake

State law requires that traffic entering and exiting a roundabout **must yield to pedestrians** in the crosswalk.

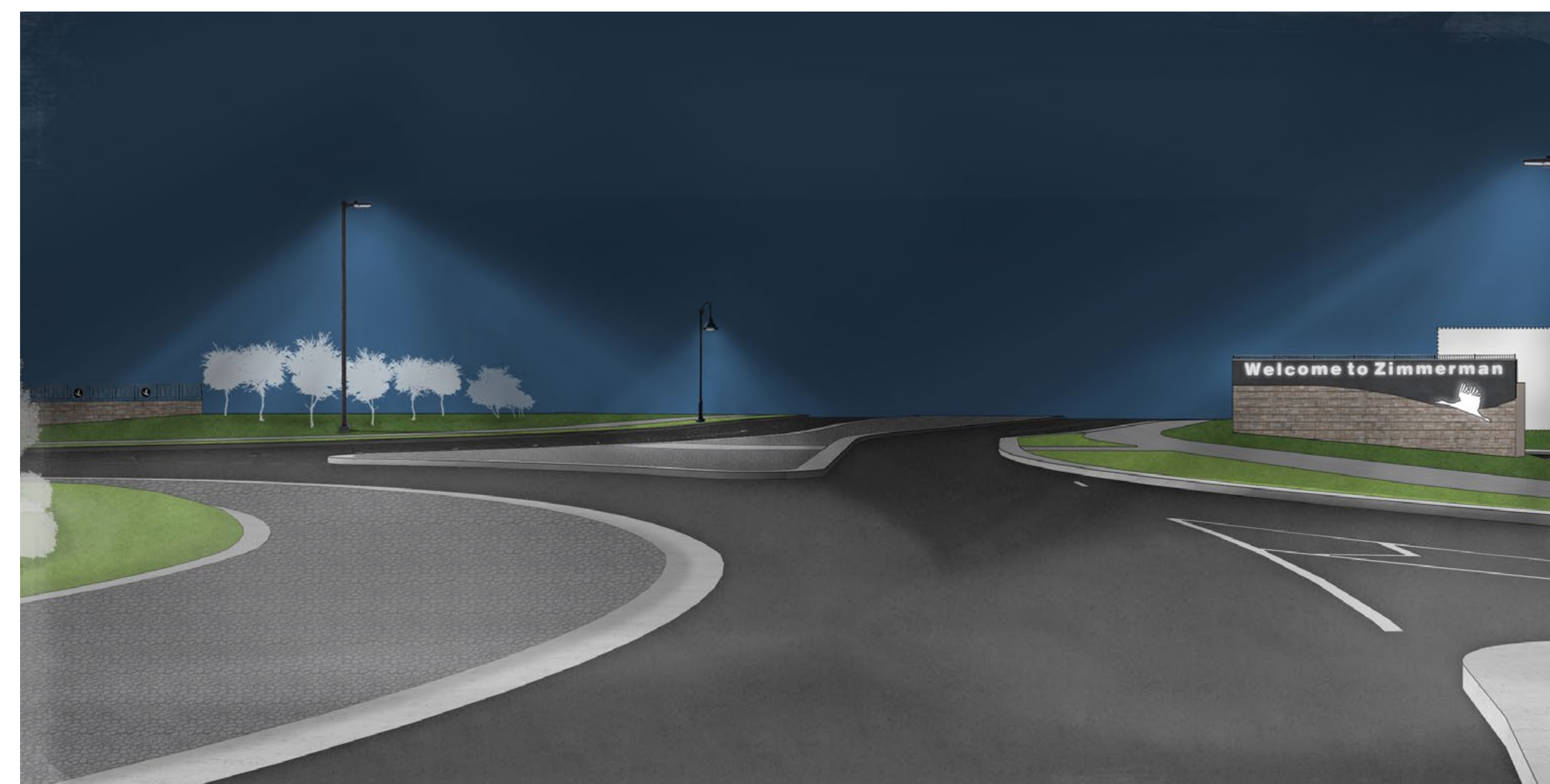
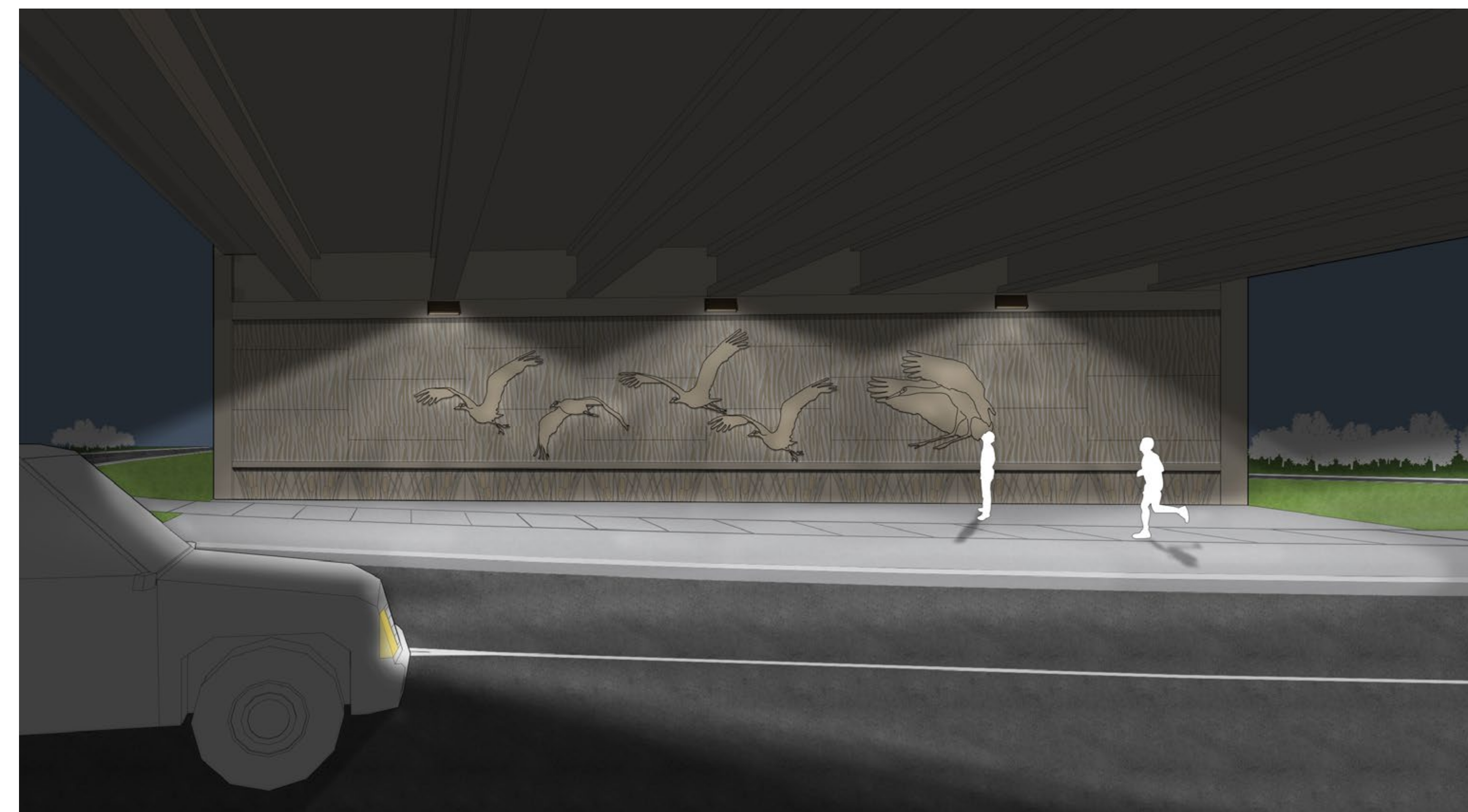


Sources 1. "A Study of the Traffic Safety at Roundabouts in Minnesota" - addendum, Minnesota Department of Transportation. 2018

2. "Report 572: Roundabouts in the United States," National Cooperative Highway Research Program. 2006.



Bridge, Retaining Wall and Lighting Aesthetics



Draft Subject to Change

Disclaimer: This drawing represents a potential design concept only. This document is a draft, subject to change, and is provided for information only. This draft document does not commit Sherburne County to construct the project as shown in part or in whole. The actual project plan may differ from this draft plan.



Interchange Visualization



Draft Subject to Change

Disclaimer: This drawing represents a potential design concept only. This document is a draft, subject to change, and is provided for information only. This draft document does not commit Sherburne County to construct the project as shown in part or in whole. The actual project plan may differ from this draft plan.



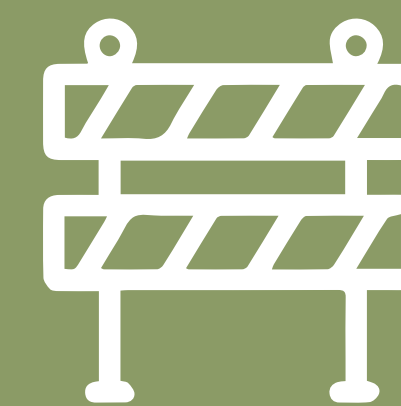
2025 Access Impacts



2nd Street East / Main Street Intersection Closure Access Map



The goal of this year's work is to complete several local connections and install temporary improvements in preparation for 2026 construction.



Drivers can expect to see temporary lane closures and traffic shifts on Highway 169.



You can expect to see activity in all areas of the project area for utility relocations. These may require temporary lane and minor access closures. Advanced notice will be provided to all impacted businesses and residents.



Business Outreach



Communications and Support

Our team is committed to informing and supporting the business community during construction.

- Advanced notice (in-person and digital) of any major impacts
- Custom detour maps to share with customers and employees
- Local business spotlight campaign on City and County's social media platforms – more info to come!
- Dedicated business liaison to respond to questions and concerns:
Greg Weber, 763-248-1697, greg.weber@bolton-menk.com

Marketing Recommendations During Construction

- Offer discounts to construction workers
- Run newspaper, radio or social media ads
- Host events and special offers/discounts
- Direct mailings
- Collaborate with other businesses to extend your efforts and stretch your dollar

Minnesota Logo Sign Program

When construction is complete, the Minnesota Logo Sign Program will determine if the blue logo signs can be placed within or near the project area. If you are interested in participating, please reach out to Dave DeSutter, Minnesota Logos General Manager at 952-895-8079 or dadesutter@interstatelogos.com to learn more information about the program.





Stay Connected

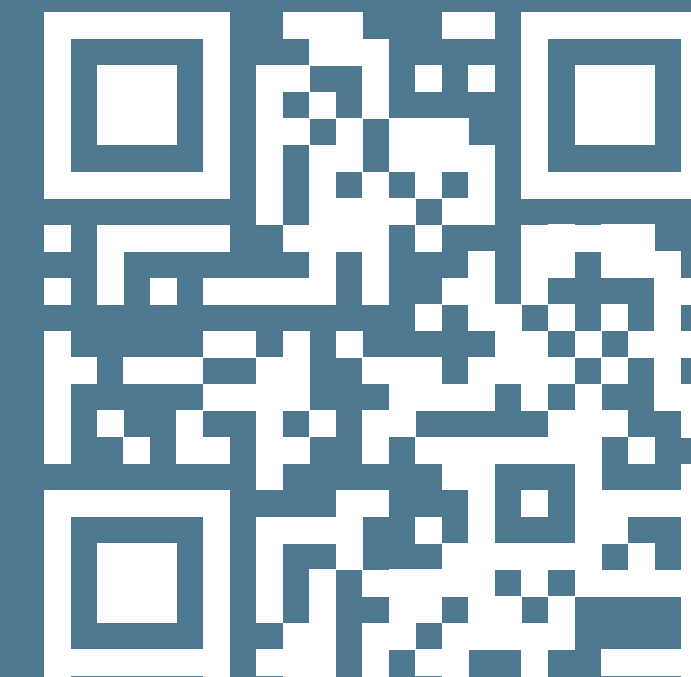


**Questions or concerns
during construction?**

**Our team is available
to help!**



Email and text updates will be sent during construction to share information about upcoming impacts.



Visit the project website!
Hwy169andCR4.com



Project Hotline
763-463-7818



Email:
help@hwy169andcr4.com