



PROJECT OVERVIEW

Inglewood Drive Railroad Crossing and Associated Roadway Improvements

PROJECT SUMMARY

The City of Baxter is planning for the 2022 Inglewood Drive Railway Crossing and Associated Roadway Improvements project to accomplish the following:

- Remove the existing traffic signal on Highway 210 at Knollwood Drive and relocate it, along with the Knollwood Drive railway crossing, to Highway 210 at Inglewood Drive;
- Extend Inglewood Drive south across Highway 210 and the BNSF railway and connect it to Foley Road;
- Perform pavement maintenance (full depth reclamation) on Foley Road between Highland Scenic Road and Knollwood Drive and east of the new Inglewood Drive connection to Forthun Road;
- Trail improvements along Foley Road, Inglewood Drive, Forthun Road and Isle Drive;
- Extend sewer and water to Perch Lake properties east of Timberlane Drive;
- Reconstruct the Isle Drive and Forthun Road intersection as a mini roundabout.



The City contracted with Bolton & Menk, Inc. to update the feasibility study, develop a preliminary geometric layout, perform public involvement and coordination with residents, coordinate with BNSF, develop final design documents, and perform construction observation services.

PROJECT GOALS

The goal of the project is to improve traffic circulation and movements that compliments the main roadway arterials of Highways 210 and 371 along with maintaining and providing a safe pedestrian crossing of Highway 210 and the BNSF railway. Relocation of the signalized intersection to Inglewood Drive improves signal spacing on Highway 210 and shortens the distance between the commercial area along Highway 371 and access to Highway 210 for westbound trips. The proposed Inglewood Drive and Foley Road intersection is approximately 0.8 miles from the commercial area. The project will also improve regional traffic flow and pedestrian movements with Inglewood Drive, Forthun Road and Isle Drive providing a connected corridor from Pine Beach Road/CSAH 77 north of the City to Highland Scenic Road and Mapleton Road on the south. The relocation of the traffic signal and railway crossing and the connection of Inglewood Drive to Foley Road has been recommended in previously conducted long-range transportation studies and has been in the planning stage for several years.

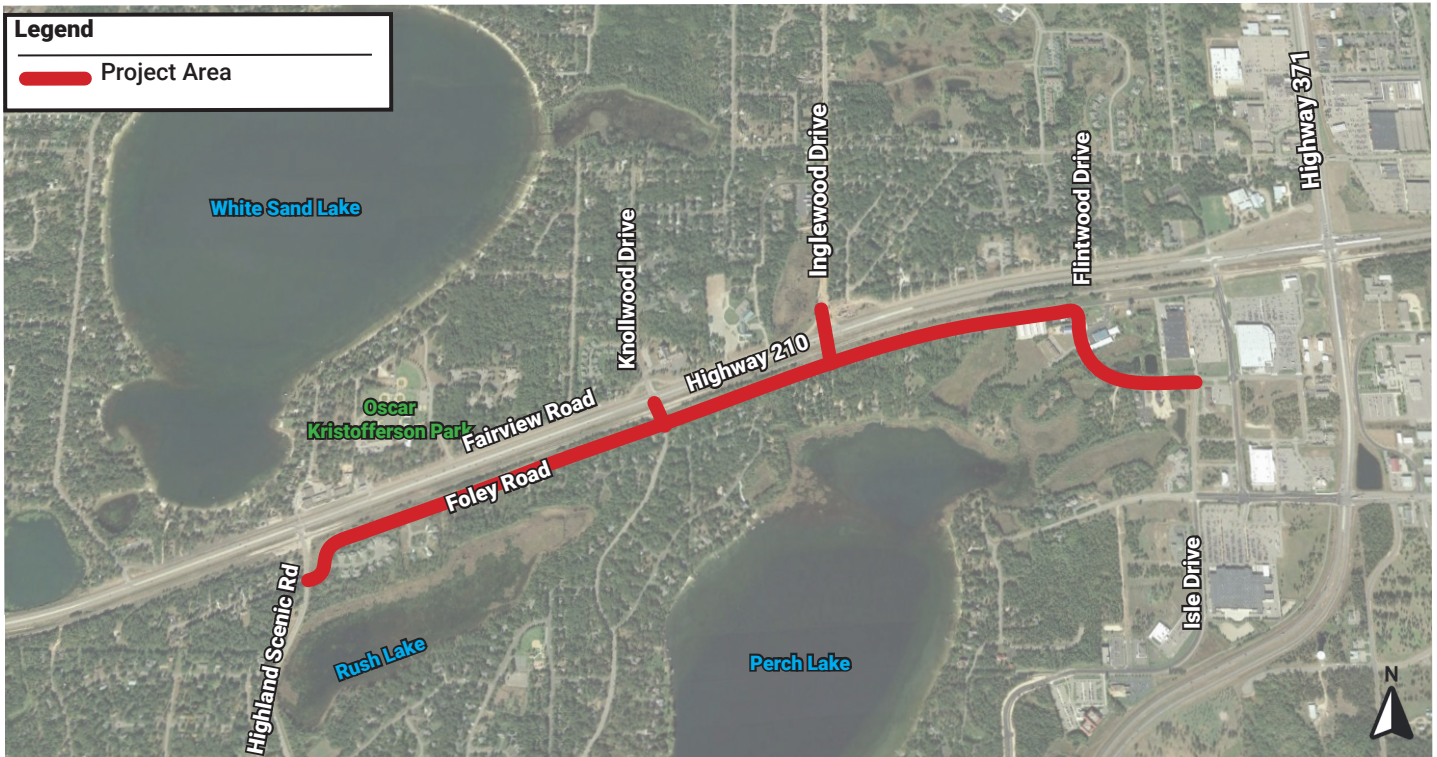


PROJECT SCHEDULE

- **Preliminary Design: Now through Summer 2021**
- **Public Involvement and Input: Through end of 2021**
- **Final Design: Fall 2021 to January 2022**
- **Construction: 2022 (Roadway, Signal, Railroad and Public/Private Utilities)**



Inglewood Drive Railroad Crossing and Associated Roadway Improvements



PROJECT HISTORY

The City of Baxter completed a feasibility report that was approved by the City Council on April 17, 2018. The report compiled all previous traffic studies, existing pavement conditions and options to implement needed sanitary and watermain improvements. From the data, this project was identified as a need and therefore a preliminary project footprint was established. In conjunction with that report, MnDOT District 3 awarded the City of Baxter \$1.1 million in Local Initiative funding and \$805,000 in federal funds through the Region 5 process to be applied to this project.

The Baxter City Council discussed the 2022 Inglewood Drive Railway Crossing and Associated Roadway Improvements project layout at their April 6, 2021 and May 4, 2021 Council Workshop and gave their consensus to the layout as presented. This consensus allows the project team to proceed with the following work: environmental documentation, public engagement, public utilities and the assessment process, private utility coordination, BNSF railroad coordination, MnDOT coordination and final design.

MnDOT District 3 is wrapping up their Baxter TH 210 Corridor Study that overlaps with this project. Their study analyzed safety improvements, access management, traffic flow patterns, pedestrian crossings and the traffic capacity of the Highway 210 corridor through Baxter. The City was present and engaged during this work and is currently working with MnDOT on opportunities that could mesh and possibly be incorporated into this project.

PROJECT CONTACTS

Project Engineer: Derek Arens

Phone: 612-655-1546

Email: derek.arenas@bolton-menk.com

Project Manager: Aaron Warford

Phone: 651-503-5700

Email: aaron.warford@bolton-menk.com

PROJECT COMMENTS

Share your comments at: <https://gis.bolton-menk.com/inputid/?app=inglewooddrive>

For more details or to sign up for updates, visit inglewooddrive.com

