

**BOLTON  
& MENK**

Real People. Real Solutions.

# 2018 LOCAL ROAD RESURFACING CONSTRUCTION NEWSLETTER

June 5, 2018



OVERVIEW



PROJECT  
SCHEDULE



SAFETY



ACCESS &  
COMMUNICATION



SIDEWALK  
REPLACEMENTS



MAP



CONTACT



## OVERVIEW

The City's contractor OMG Midwest (formerly Chard) will be resurfacing streets in the River Ridge and Bridle Creek neighborhoods this summer. A map of the project area is included at the end of this newsletter. The project involves replacing portions of sidewalk and curbing, milling (grinding off) part of the pavement, and then re-paving the street.



## PROJECT SCHEDULE

The contractor's estimated project schedule is as follows:

### Early/Mid July – Early August

- Spot concrete curb and gutter replacement
- Spot concrete sidewalk replacement
- Concrete pedestrian ramp construction

### August – Early September

- Milling and resurfacing of street pavement



## SAFETY

The contractor will do everything they can to make the project area safe for residents, but safety is everyone's priority. Please be aware of your surroundings when walking, biking, or driving around construction equipment. Please keep children and pets away from construction activity, as they might not be aware of the dangers. *If you see anything that you feel is unsafe, please call Luke Wheeler at 612-597-9105.*



## SIDEWALK REPLACEMENTS

Sidewalks throughout the neighborhoods have been inspected for heaved and broken concrete panels. Many concrete panels have been identified that will need to be replaced. Per City Code property owners are responsible for maintenance and replacement of heaved and broken sidewalk panels in front of their property. The City has received a competitive bid from its contractor for replacement of these broken panels. Property owners who have broken sidewalk in front of their property will soon be provided a separate notice requiring replacement within 90 days and the option to have the replacement completed by the City at the property owner's cost.

The project also involves replacement of pedestrian curb ramps at intersections by the City.



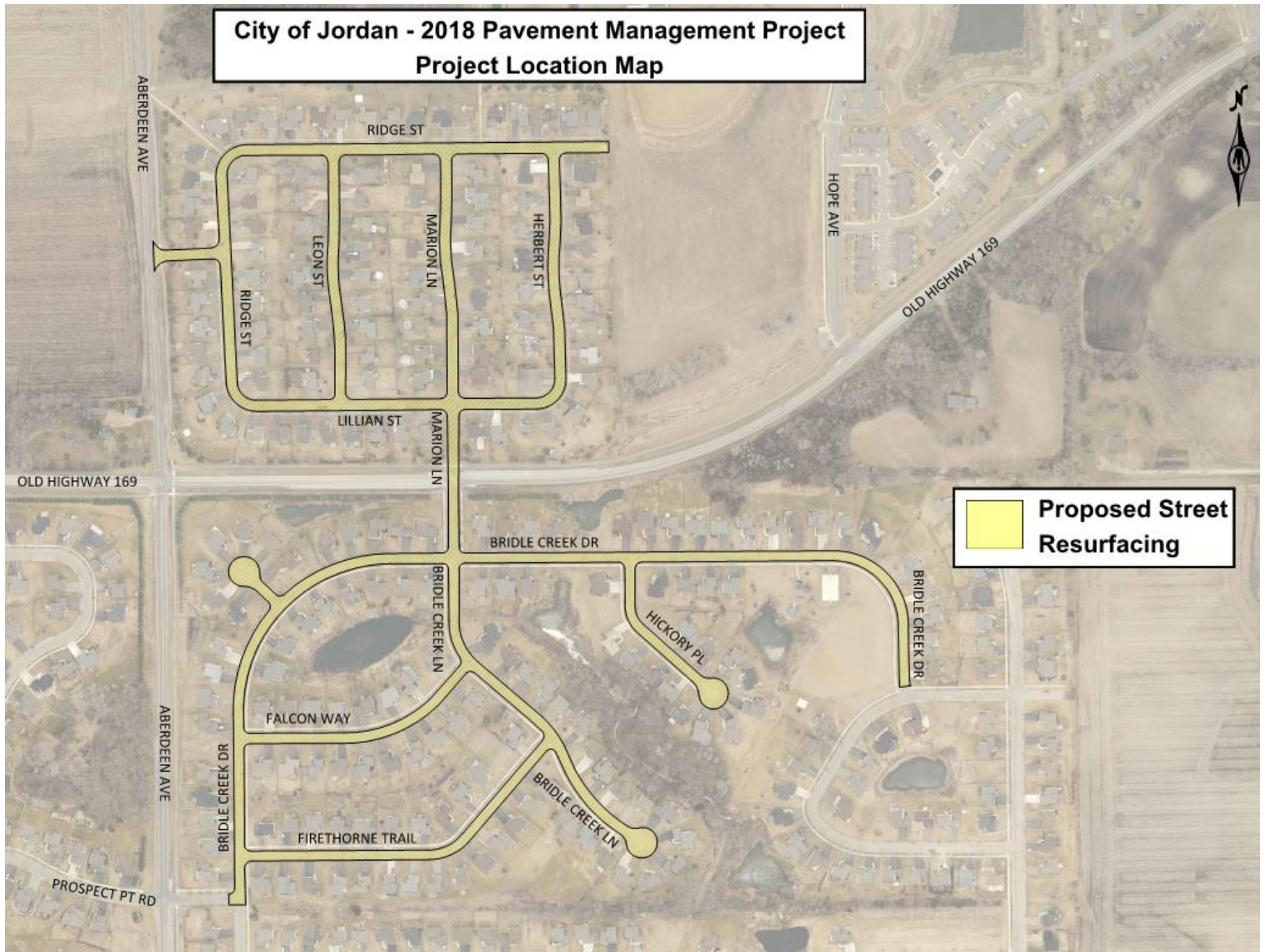
## ACCESS AND COMMUNICATION

Brief access delays should be anticipated during the work day, but access to private driveways will be available throughout the project. Temporary parking restrictions will be put in place once construction begins. Future notices or signs will include more detailed information along these lines.

Typical working hours for the project are 7 a.m. to 7 p.m., Monday through Friday, and 8 a.m. to 6 p.m. on Saturdays as necessary.



## MAP



## PROJECT CONTACTS

**Luke Wheeler**, of Bolton & Menk, will be on the project site representing the City and its residents and business owners. If you have any questions regarding this newsletter, the project, or anything in general, you may approach him on site or call his cell phone at **(612) 597-9105**

**Mike Waltman**, of Bolton & Menk is the City Engineer and Project Manager. He can be reached at **(952) 890-0509** or **(612) 221-6946** or [mikewa@bolton-menk.com](mailto:mikewa@bolton-menk.com)