

**BOLTON
& MENK**

Real People. Real Solutions.

2018 LOCAL ROAD RESURFACING CONSTRUCTION NEWSLETTER

July 6, 2018



OVERVIEW



PROJECT
SCHEDULE



SAFETY



ACCESS &
COMMUNICATION



MAP



CONTACT



OVERVIEW

The City's contractor OMG Midwest (formerly Chard) will be resurfacing streets in the River Ridge and Bridle Creek neighborhoods this summer. A map of the project area is included at the end of this newsletter. The project involves replacing portions of sidewalk and curbing, milling (grinding off) part of the pavement, and then re-paving the street.



SAFETY

The contractor will do everything they can to make the project area safe for residents, but safety is everyone's priority. Please be aware of your surroundings when walking, biking, or driving around construction equipment. Please keep children and pets away from construction activity, as they might not be aware of the dangers. *If you see anything that you feel is unsafe, please call Luke Wheeler at 612-597-9105.*



PROJECT SCHEDULE

OMG Midwest has indicated they plan to begin replacement of defective curb panels in the River Ridge neighborhood on **Tuesday, July 10th**. They will be working periodically over the next 2-3 weeks in the neighborhood on concrete curbing, sidewalks, and pedestrian ramps.

The contractor currently plans to begin work during the week of July 23rd in the Bridle Creek neighborhood. Similar to River Ridge, OMG Midwest will start with concrete curbing, sidewalk, and pedestrian ramp work.

The contractor's overall project schedule is as follows:

Early/Mid July – Early August

- Spot concrete curb and gutter replacement
- Spot concrete sidewalk replacement
- Concrete pedestrian ramp construction

August – Early September

- Milling and resurfacing of street pavement



ACCESS AND COMMUNICATION

Brief access delays should be anticipated during the work day, but access to private driveways will be available throughout the project. Temporary parking restrictions will be put in place once construction begins. Future notices or signs will include more detailed information along these lines.

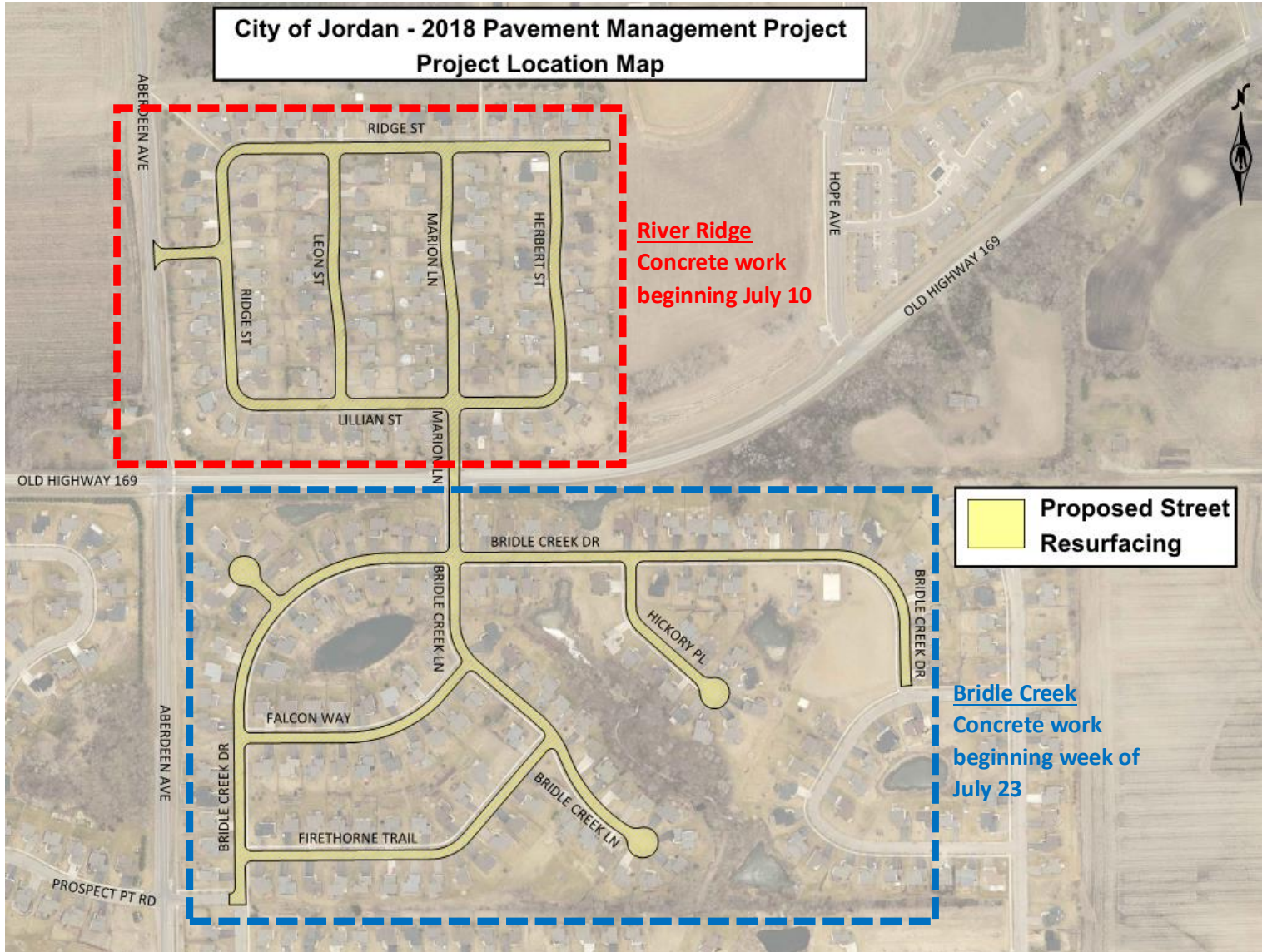
Please do not park on the streets adjacent to concrete curbing which has been marked for replacement with pink paint. Hindering the contractor's access to these areas will delay completion of the construction effort and may result in towing of vehicles.

Typical working hours for the project are 7 a.m. to 7 p.m., Monday through Friday, and 8 a.m. to 6 p.m. on Saturdays as necessary.

For project information/updates please visit:
www.jordanmnengineering.com



MAP



PROJECT CONTACTS

Luke Wheeler, of Bolton & Menk, will be on the project site representing the City and its residents and business owners. If you have any questions regarding this newsletter, the project, or anything in general, you may approach him on site or call his cell phone at **(612) 597-9105**

Mike Waltman, of Bolton & Menk is the City Engineer and Project Manager. He can be reached at **(952) 890-0509** or **(612) 221-6946** or mikewa@bolton-menk.com