



Real People. Real Solutions.

# City of Jordan 2022 Infrastructure Improvements

April 2022

## City of Jordan

210 1<sup>st</sup> Street E  
Jordan, MN, 55352  
952-492-2535



## Contacts

Members of the project team are listed below to assist you throughout the project duration.

Luke Wheeler, P.E.  
Assistant City Engineer & Project Manager  
Cell Phone: 612-597-9105  
[Luke.Wheeler@bolton-menk.com](mailto:Luke.Wheeler@bolton-menk.com)

Mike Waltman, P.E.  
Jordan City Engineer  
Cell: 612-221-6946  
[Michael.Waltman@bolton-menk.com](mailto:Michael.Waltman@bolton-menk.com)



## Project Website

[www.jordanmnengineering.com](http://www.jordanmnengineering.com)

Click on the link for “2022 Infrastructure Improvements” for additional information regarding this project. The project website will be updated to include project information and contain resources such as past mailings and answers to frequently asked questions.



## Overview

The 2022 Infrastructure Improvements Project is planned to be constructed this summer in the Whispering Meadows commercial development and along 4 alleys in Lowertown Jordan. The project will improve and sustain infrastructure at several locations in the summer of 2022. The following project areas are to be included in project, also as shown in the map on the next page. In summary, the work entails:

- **Whispering Meadows:** Watermain replacement, street pavement replacement, addition of on-street lighting, and the addition of concrete sidewalk along the outside of the Seville and El Dorado Drive loop.
- **Alley Improvements:** Surfacing 4 alleys between Mertens Street and Rice Street, ½ block north of Second Street (TH 282) with either concrete or bituminous (blacktop) pavement



## Project Informational Meeting #2

Bids were recently received for this project and final assessment values have been determined. **Public informational meetings have been scheduled for each project area to discuss the final assessments and proposed construction. The meeting will be held:**

**When:** May 16, 2022  
5:30 pm

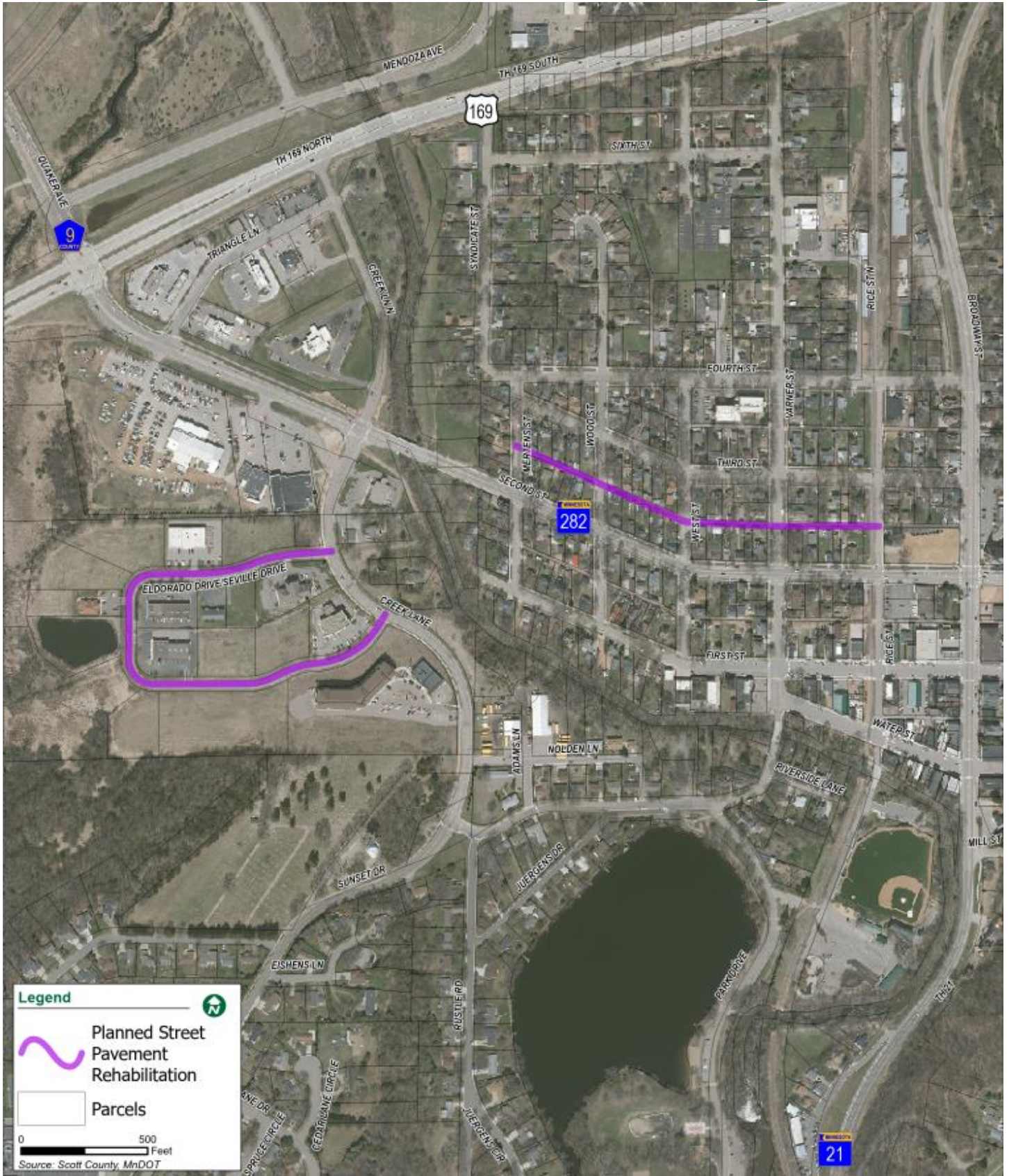
**Where:** Jordan City Council Chambers  
116 First Street E, Jordan MN 55352

A video of the meeting will also be **made available online** via the City’s website at <https://jordanmn.gov/city-government/city-council-meetings/>.



## Special Assessments

Special assessments are necessary per City policy to fund a portion of the improvements for both the Whispering Meadows and Alley Improvements. Owners of property to whom special assessments apply have received an additional notice with final assessment information. Additional information on these assessments will be available at the public information meeting.



**Legend**

- Planned Street Pavement Rehabilitation
- Parcels

0 500 Feet  
Source: Scott County, MnDOT





## Construction Zone Safety

Some residents (especially children) may become curious about the work the Contractor is performing. Please be stay clear of construction zones when possible. Hazards inherently exist around heavy machinery, trenches, unstable material, confined buried spaces, hot asphalt, etc. and may not be easily recognizable by all. The Contractor will take safety within the construction area, though everyone should also take personal measures to promote safety. Any direction from the Contractor regarding safety must be heeded including signage or direction given by contractor field staff. If you observe an unsafe condition, please report it to **Luke Wheeler at 612-597-9105**.



## Access and On-Street Parking

Access to the alleys will be restricted during the typical construction working hours (7am-7pm M-F and 8am-6pm Sat). However, access to driveways and garage will typically be available at the end of the day. There will be access restrictions to the alley and driveway/garage while concrete curb, aprons, and driveways cure. Concrete typically takes approximate 5-7 days to cure/harden enough for vehicles to drive over. During these times, on-street parking will be required. The contractor will work with residents to notify them of the appropriate parking location on an as-needed basis. Further notices or signs will include more detailed information.



## Privately owned Features in the Public Right-of-Way

If you have features such as landscaping, retaining walls, shrubs, bushes, flowers, sheds, etc. in the public right-of-way (i.e. not located on your property), the contractor will attempt to work around them but is ultimately not responsible to protect them. The property owner is responsible for relocating these private features if necessary, to allow the project to be constructed. Buried irrigation lines and heads, as well as dog fences, should be located and marked so they are readily visible thereby allowing the contractor to avoid impact to them. The City and contractor will protect, or if impacts are necessary, remove/replace irrigation and dog fence components impacted by the project. Please help minimize need for these impacts by communicating their location to the project team by marking the systems or other coordinated means prior to the start of construction.