



Real People. Real Solutions.

# City of Jordan 2026 Infrastructure Improvements

May 2026

## City of Jordan

210 1<sup>st</sup> Street E  
Jordan, MN, 55352  
952-492-2535



## Contacts

Members of the project team are listed below to assist you throughout the project duration.

### Primary On-Site Contact:

Dylan Anderson  
On-Site Project Representative  
Cell Phone: 651-416-6176  
[Dylan.Anderson@bolton-menk.com](mailto:Dylan.Anderson@bolton-menk.com)

### Other Project Contacts:

Alex Madson  
Construction Project Manager  
Cell Phone: 952-256-3222  
[Alex.Madson@bolton-menk.com](mailto:Alex.Madson@bolton-menk.com)

Luke Wheeler, P.E.  
City Engineer  
Cell Phone: 612-597-9105  
[Luke.Wheeler@bolton-menk.com](mailto:Luke.Wheeler@bolton-menk.com)



## Project Website

[www.jordanmnengineering.com](http://www.jordanmnengineering.com)

Click on the link for “2026 Infrastructure Improvements” for additional information regarding this project. The project website will be updated to include project information and contain resources such as past mailings and answers to frequently asked questions. Residents are encouraged to subscribe to email/text updates. Important construction information will be sent to subscribers.



## Overview

The City of Jordan is undertaking a construction project to improve and sustain infrastructure at several locations during the summer of 2026. The following project areas are to be included in the project (see map on the next page):

### Road Resurfacing - Reclamation or Mill & Overlay of:

- Timberline Development
- Industrial Park Area (Corporate Dr, Enterprise Dr, Ervin Industrial Dr, 185<sup>th</sup> St)
- Downtown (First St, Water St, Mill St, East St)
- Park Drive, Hope Avenue, Lincoln Ave
  - New parking lot on the west side of Hope Avenue
- Sawmill Woods
- Bridle Creek & Arborview Developments

### Alley Improvements – Surfacing of 3 alleys located:

- ½ block east of Wood Street, north of Fourth Street
- ½ block north of Third Street, between Varner Street and Rice Street
- ½ block north of TH 282 (2<sup>nd</sup> St), between Rice Street and TH 21 (Broadway St)



## Project Timeline

**Work on this project will be starting soon!** GMH Asphalt has been awarded the construction contract for this project. The general project sequencing provided to the City is summarized below. The contractor intends to start construction **beginning the week of June 15<sup>th</sup>**. Paper notices will be placed in residents’ front doors with additional details on when construction will start in their area. As with all construction projects, this schedule/sequencing is weather dependent and subject to change. Updates will be provided through future newsletters and email updated if/when significant changes to the schedule occur.

- **Ervin Industrial, Enterprise, Corporate, 185<sup>th</sup>**
- **Eastern Half of Timberline**
- **Bridle Creek/Arborview**
- **Sawmill Woods**
- **Lincoln Avenue**
- **Hope Avenue and Hope Ave Parking Lot**
- **Downtown (1<sup>st</sup>, Water, Mill, East)**
- **Western Half of Timberline**
- **Alleys**
- **Park Drive**

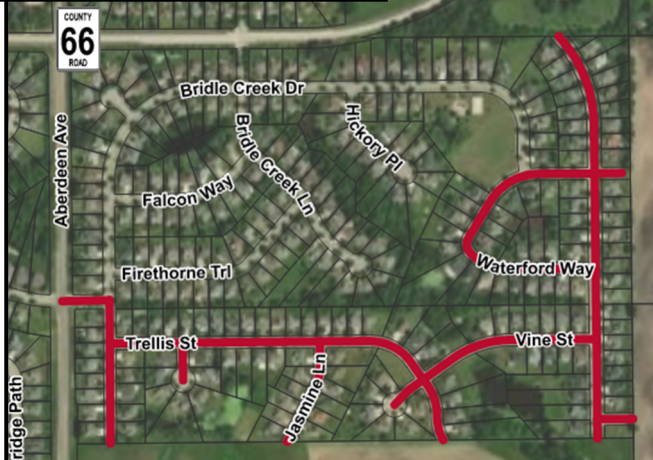
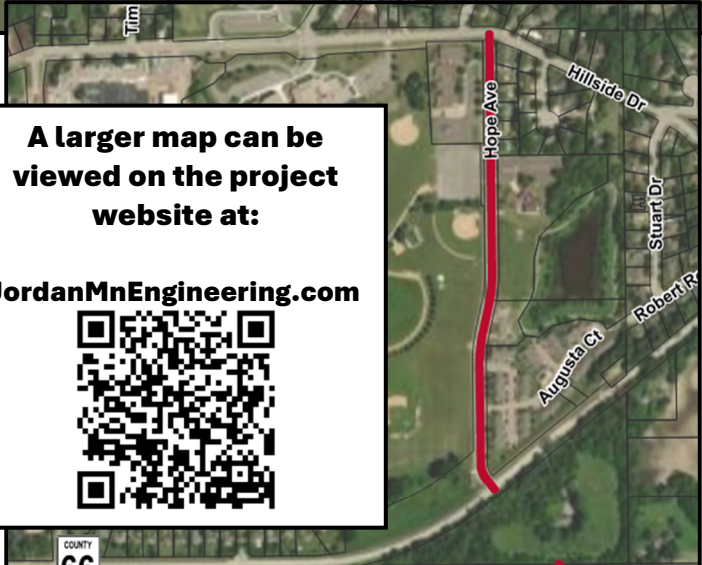


## Project Area Maps






**A larger map can be viewed on the project website at:**

**JordanMnEngineering.com**





**Legend**

-  Alley Surfacing
-  Pavement Resurfacing
-  Parcel

0 1,200 Feet

Source: City of Jordan, Scott County





## What construction is happening?

### Private Utility Relocations

Some private utilities will be adjusting their facilities ahead of construction to better facilitate the improvements. This could involve the relocation of private utility surface infrastructure such as power poles and boulevard pedestals and/or potentially adjustment of underground utilities within the Right of Way (ROW). This work is separate from the City's contract and is managed by private utilities. The private utilities will be responsible for restoring any disturbances.

### Pavement Resurfacing & Associated Improvements

#### **Concrete Curb & Gutter and ADA Improvements:**

Ahead of pavement resurfacing, sections of curb and gutter that are damaged/sunken will be replaced. Pedestrian ramps for sidewalks at intersections will be removed and replaced to adhere to ADA (Americans with Disabilities Act) requirements. These replacements will be marked with pink paint prior to construction starting. Mainline sidewalk within the project areas will not be replaced. Driveway impacts are anticipated to be minimal, but if affected, they will be patched with like material (i.e., existing bituminous/asphalt driveways will be replaced with bituminous/asphalt, and existing concrete driveway with concrete, etc.). Please note fresh concrete cannot be driven on for 5-7 days while it cures (hardens). The contractor will coordinate with residents regarding access and parking while the concrete cures.

**Mill and Overlay:** Most Streets (except Hope Ave and Lincoln Ave) will be improved with a mill and overlay. The streets will have the top 2 inches of bituminous milled (grinded off). The contractor will then do some spot patching of underlying pavement in areas where there are concentrated distresses or remaining pavement is too thin. Then a new 2" layer of asphalt will be paved over the grinded surface.

**Full Depth Reclamation /Resurfacing:** Hope Avenue and Lincoln Drive will have the entire pavement section reclaimed. This involves grinding up the existing pavement and mixing it with the underlying aggregate. The top portion of the reclaimed aggregate material will be removed and then the underlying base material will be graded and compacted in preparation for the paving of two new layers of bituminous (asphalt).

**Restoration / Cleanup:** All disturbed turf areas will be restored and graded with topsoil and seeded with hydroseed (a slurry of mulch and grass seed). The contractor and City will work through any remaining cleanup/restoration items before the end of the project.

### Alley Improvements

**Concrete Surfacing:** Concrete pavement will be constructed over top of the aggregate base material. The existing longitudinal grade along the alleys is relatively flat. Concrete can be formed at flatter slopes to better promote surface drainage via gravity. The concrete will be shaped like a "V" such that water flows away from private property to the center of the alley, then longitudinally out the ends of the alley. The concrete aprons at either end of the alley will also be removed and replaced. Please note that freshly placed concrete cannot be driven on for 5-7 days while it cures. The contractor will likely have several days of pouring concrete along each alley. Residents will need to park on the street while the concrete cures within the alleys. Additional notices will be sent to residents prior to the concrete work.

**Driveways:** Portions of driveway affected by the construction will be replaced with like material (i.e., an existing bituminous driveway will be replaced with bituminous, and existing concrete driveway with concrete, etc.).



### **Construction Zone Safety**

Some residents (especially children) may become curious about the work the Contractor is performing. Please stay clear of construction zones when possible. Hazards inherently exist around heavy machinery, trenches, unstable material, confined spaces, hot asphalt, etc. and may not be easily recognized by all. The Contractor will be responsible for safety within the construction area, though everyone should also take personal measures to promote safety. Any direction from the Contractor regarding safety must be followed including signage or direction given by contractor field staff. If you observe an unsafe condition, please report it to **Dylan Anderson at 651-416-6176**.



## Access and On-Street Parking

Brief access delays should be anticipated during the typical construction working hours (7am-7pm M-F. and 8am-6pm Sat.). Please plan ahead when leaving/accessing construction areas.

### Resurfacing Area

Access to homes and businesses will be maintained. There may be times of intermittent disruption/delays during working hours. At times of resurfacing or concrete work directly in front of homes/business entrances, an alternative access plan will be established by the contractor. This may require that resident park on a side street away from the active construction activity. The contractor will coordinate with residents' access. On street parking in active construction areas will not be allowed during working hours. Future notices and signs will include more detailed information. Please advise the project team (contact information on the first page of this newsletter) of any unique circumstances such as handicap access.

### Alley Improvements

Access to residential driveways will typically be available during construction. Vehicles will not be able to drive over freshly poured concrete alley pavement, entrance aprons, and driveways for 5-7 days while the concrete cures. During this time, residents will be asked to park on an adjacent street. The contractor will work with residents to notify them of the appropriate parking location on an as-need basis. Future notices and signs will include more detailed information.



## Garbage Collection

Residents who usually put their garbage out to the street in front of their homes should continue to do so during construction. The garbage company has been notified of the upcoming construction. If the contractor needs to restrict access on garbage day, they will label your garbage receptacle, move it to a location where the hauler can pick it up, and then return it to your residence by the end of the day.

For residents along the alleys who typically put their garbage receptacles in the back alley on garbage day, please plan bring your garbage can out to the street in front of your home during construction. Access to the alleys will be restricted at times during construction. The garbage company has been notified to pick up the receptacles in front of the homes during the project. If for some reason you are unable to place your garbage can in front, please notify the project team to coordinate special arrangements.



## Privately owned Features in the Public Right-of-Way

If you have features such as landscaping, retaining walls, shrubs, bushes, flowers, sheds, etc. in the public right-of-way (i.e., the boulevard area behind the curb), the contractor will attempt to work around them but is ultimately not responsible for protecting them. The property owner is responsible for relocating these private features if necessary to allow the project to be constructed.

Buried irrigation lines and heads, as well as dog fences, should be located, marked, and be readily visible to help avoid impact. The City and contractor will protect, or if impacts are necessary, remove/replace irrigation and dog fence components impacted by the project. Please help minimize need for these impacts by communicating their location to the project team by marking the systems or other coordinated means prior to the start of construction.