

MINNESOTA DEPARTMENT OF TRANSPORTATION

CITY OF KIESTER

FARIBAULT COUNTY, MINNESOTA

COUNTY STATE AID HIGHWAY 58 & 64

MINN. PROJ. NO. _____

--- GOVERNING SPECIFICATIONS ---
 THE 2020 EDITION OF THE MINNESOTA DEPARTMENT OF TRANSPORTATION "STANDARD SPECIFICATIONS FOR CONSTRUCTION" AND THE "SUPPLEMENTAL SPECIFICATIONS" DATED SEPTEMBER 2022 SHALL GOVERN.
 ALL TRAFFIC CONTROL DEVICES AND SIGNING SHALL CONFORM AND BE INSTALLED IN ACCORDANCE WITH THE LATEST "MINNESOTA MANUAL ON UNIFORM TRAFFIC CONTROL DEVICES" (MN MUTCD) AND PART VI, THE LATEST "FIELD MANUAL" FOR TEMPORARY TRAFFIC CONTROL DEVICES.

DESIGN DESIGNATION	CSAH 58
STA. 157+91.18 TO STA. 169+33.31	
FUNTIONAL CLASSIFICATION	LOCAL
R-VALUE	18
ΣN-18	152,000
NO. & WIDTH OF TRAFFIC LANES	2 & 12 ft
NO. & WIDTH OF PARKING LANES	2 & 8 ft
ADT (PRESENT YEAR) 2023	160
ADT (PROJECTED YEAR) 2043	176
HCADT (PROJECTED YEAR) 2043	25.63%
DESIGN SPEED	30 mph
DESIGN LOAD	10 ton

CONSTRUCTION PLAN FOR: GRADING, AGGREGATE BASE, PLANT MIXED BITUMINOUS PAVEMENT, CONCRETE CURB AND GUTTER, ADA IMPROVEMENTS, STORM SEWER, SANITARY SEWER, WATERMAIN, TURF ESTABLISHMENT AND RELATED APPURTENANCES

SAP 022-658-004 LOCATED ON	CSAH 58	FROM	CSAH 58 (MAIN STREET)	TO	TH 22 (FIRST STREET)	(GEOGRAPHICAL DESCRIPTION)
			1,100' WEST & 300' SOUTH OF NE CORNER S21, T101N, R24W		575' SOUTH OF NE CORNER SECTION 21, T101N, R24W	(LEGAL DESCRIPTION)
SAP 022-664-001 LOCATED ON	CSAH 64	FROM	CSAH 2 (STATE ST)	TO	CSAH 58 (MAIN STREET)	(GEOGRAPHICAL DESCRIPTION)
			1,840' WEST OF NE CORNER SECTION 21, T101N, R24W		1,100' WEST & 300' SOUTH OF NE CORNER S21, T101N, R24W	(LEGAL DESCRIPTION)

DESIGN SPEED NOT ACHIEVED AT:
N/A

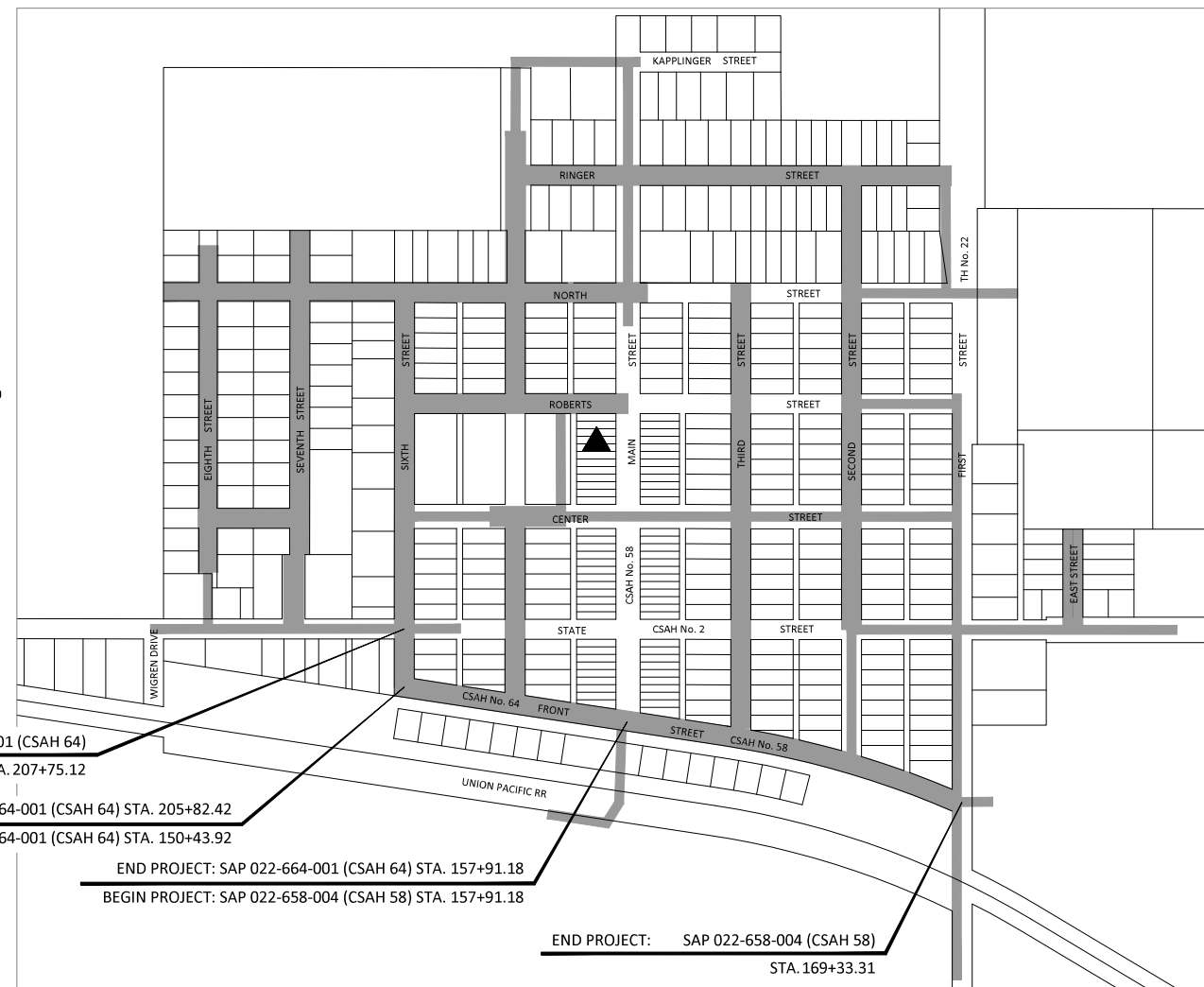
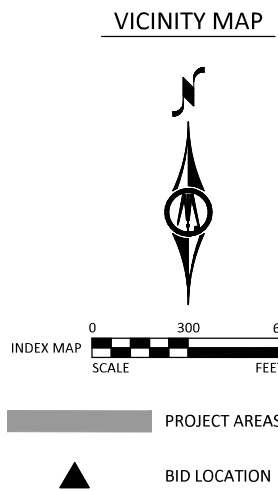
DESIGN SPEED FOR ROADWAY BASED ON ON STOPPING SIGHT DISTANCE:
 HEIGHT OF EYE = 3.5 FT
 HEIGHT OF OBJECT = 2.0 FT

CSAH 58 (SAP 022-658-004)			CSAH 64 (SAP 022-664-001)		
GROSS LENGTH	1,142.13 FEET	0.216 MILES	GROSS LENGTH	939.96 FEET	0.178 MILES
BRIDGE LENGTH	FEET	MILES	BRIDGE LENGTH	FEET	MILES
EXCEPTION LENGTH	FEET	MILES	EXCEPTION LENGTH	FEET	MILES
NET LENGTH	1,142.13 FEET	0.216 MILES	NET LENGTH	939.96 FEET	0.178 MILES

DESIGN DESIGNATION	CSAH 64
STA. 150+43.92 TO STA. 157+91.18	
STA. 207+75.12 TO STA. 205+82.42	
FUNTIONAL CLASSIFICATION	LOCAL
R-VALUE	18
ΣN-18	152,000
NO. & WIDTH OF TRAFFIC LANES	2 & 12 ft
NO. & WIDTH OF PARKING LANES	2 & 8 ft
ADT (PRESENT YEAR) 2023	160
ADT (PROJECTED YEAR) 2043	176
HCADT (PROJECTED YEAR) 2043	25.63%
DESIGN SPEED	30 mph
DESIGN LOAD	10 ton

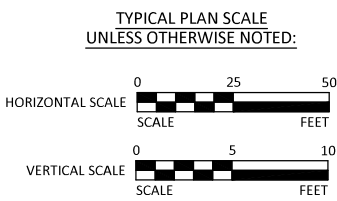
DESIGN SPEED NOT ACHIEVED AT:
N/A

DESIGN SPEED FOR ROADWAY BASED ON ON STOPPING SIGHT DISTANCE:
 HEIGHT OF EYE = 3.5 FT
 HEIGHT OF OBJECT = 2.0 FT

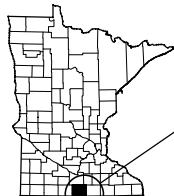


SHEET NUMBER	SHEET TITLE
GENERAL	
G0.01	TITLE SHEET
G0.02	LEGEND
G1.01	STATEMENT OF ESTIMATED QUANTITIES
G2.01 - G2.02	LOCATION PLAN & STAGING AREA
CIVIL	
C0.01 - C0.25	EXISTING CONDITIONS
C0.26 - C0.50	REMOVAL PLAN
C1.01 - C1.08	TABULATIONS
C1.09 - C1.23	TYPICAL SECTIONS & DETAILS
C2.01 - C2.29	STORMWATER POLLUTION PREVENTION PLAN
C3.01	EMBANKMENT AREA
C4.01 - C4.46	SANITARY SEWER & WATERMAIN PLAN & PROFILE
C5.01 - C5.13	STORM SEWER PLAN & PROFILE
C6.01 - C6.25	STREET PLAN & PROFILE
C6.26 - C6.43	INTERSECTION DETAILS
C6.44 - C6.51	PEDESTRIAN RAMP DETAILS
C7.01 - C7.09	TRAFFIC CONTROL PLAN
C8.01 - C8.31	CROSS SECTIONS
C9.01 - C9.07	LIFT STATION & WASTEWATER POND IMPROVEMENTS
ELECTRICAL	
E1 - E6	LIFT STATION PLAN

THIS PLAN SET CONTAINS 271 SHEETS.



PROJECT LOCATION



CITY: KIESTER
 COUNTY: FARIBAULT
 DISTRICT: 7

THE SUBSURFACE UTILITY INFORMATION IN THIS PLAN IS UTILITY QUALITY LEVEL D UNLESS OTHERWISE NOTED. THIS UTILITY LEVEL WAS DETERMINED ACCORDING TO THE GUIDELINES OF CI/ASCE 38-02, ENTITLED "STANDARD GUIDELINES FOR THE COLLECTION AND DEPICTION OF EXISTING SUBSURFACE UTILITY DATA."

BM=1264.46 TOP NUT HYDRANT STA 53+14, 24' LT NE INT 2ND & NORTH	BM=1272.25 TOP NUT HYDRANT STA 67+95, 48' LT NE INT MAIN & ROBERTS	BM=1232.19 TOP NUT HYDRANT STA 111+62, 28' RT W INT STATE & WIGREN	BM=1255.57 TOP NUT HYDRANT STA 130+46, 30' LT NE INT MAIN & STATE	BM=1253.44 TOP NUT HYDRANT STA 142+74, 41' RT E INT STATE & TH22	PROJECT DATUM: FARIBAULT COUNTY HORIZONTAL: NAD 83 (2011 ADJ) VERTICAL: NAVD 88
--	---	---	--	---	---

RECORD DRAWING INFORMATION
DESIGNED: DTM
DRAWN: DDB
CHECKED: JTO
CLIENT PROJ. NO.:

Jason V. Zinter, P.E.
 Design Engineer: I hereby certify that this plan was prepared by me or under my direct supervision, and that I am a duly Licensed Professional Engineer under the laws of the State of Minnesota.
 Date: JULY 14, 2023 License Number: 47597

Mark Daly Digitally signed by Mark Daly
 Date: 2023.08.24 10:30:38 -05'00'

Approved: Faribault County Engineer

Lisa Bigham Digitally signed by Lisa Bigham
 Date: 2023.08.25 15:24:45 -05'00'

District State Aid Engineer:
 Reviewed for compliance with State Aid Rules/Policy

Lisa Bigham Digitally signed by Lisa Bigham
 Date: 2023.08.25 15:37:35 -05'00'

Approved for State Aid Funding: State Aid Engineer

© Bolton & Menk, Inc. 2023. All Rights Reserved. PROJECT: 230223-001 (CSAH 58 & 64) DATE: 7/14/2023 8:37:16 AM



1501 SOUTH STATE ST, SUITE 100
 FAIRMONT, MINNESOTA 56031
 Phone: (507) 238-4738
 Email: Fairmont@bolton-menk.com
 www.bolton-menk.com

NO.:	ISSUED FOR:	DATE:
---	BID	07/14/2023