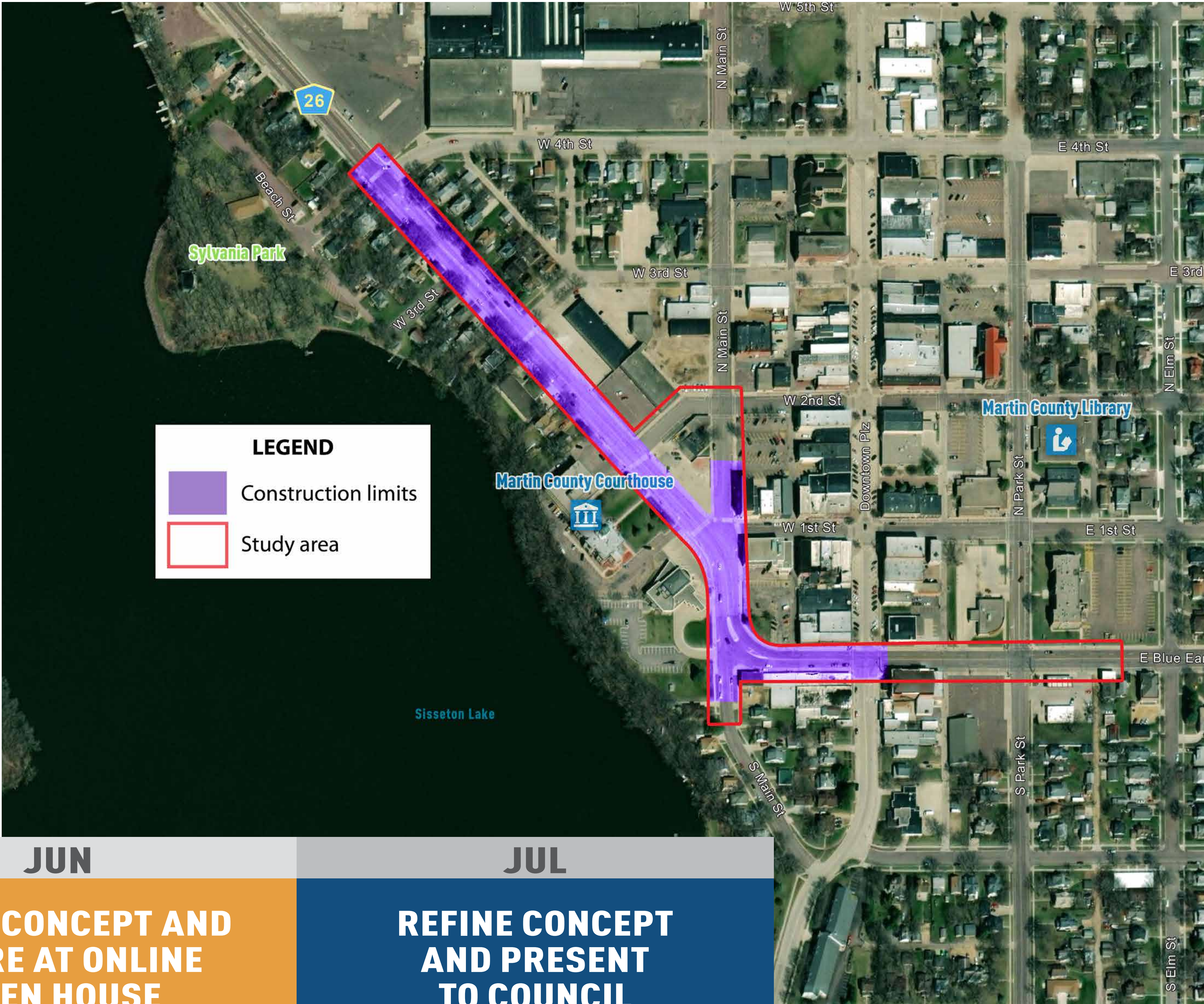


The City is planning to upgrade **Lake Avenue** in 2020 from West 4th Street to Downtown Plaza to provide a safer, more efficient, and more pedestrian friendly corridor to serve the downtown Fairmont business district and update failing infrastructure.

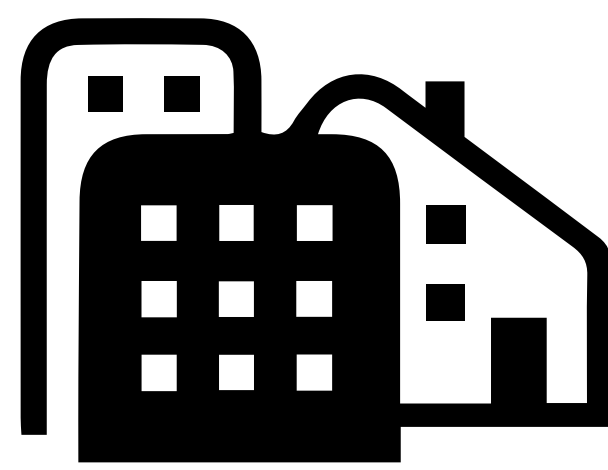


Schedule

MAY	JUN	JUL
GATHER FEEDBACK	DRAFT CONCEPT AND SHARE AT ONLINE OPEN HOUSE	REFINE CONCEPT AND PRESENT TO COUNCIL



Address pavement, curb and gutter, sidewalks, elevation changes, outdated traffic signals, and sewer, water and drainage infrastructure replacement



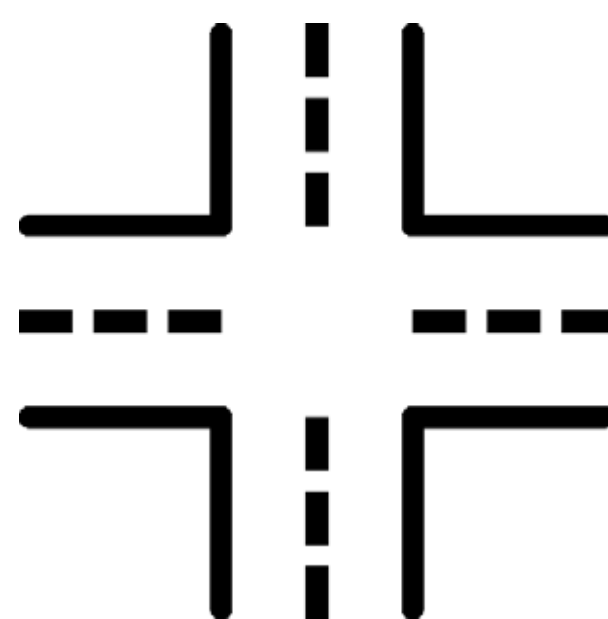
Support mixed land use as identified in the update to the City's Comprehensive Plan



Accommodate pedestrian and bicycle use as identified in the 2017 Active Transportation Plan



Identify streetscaping, landscaping, and site furnishing improvements

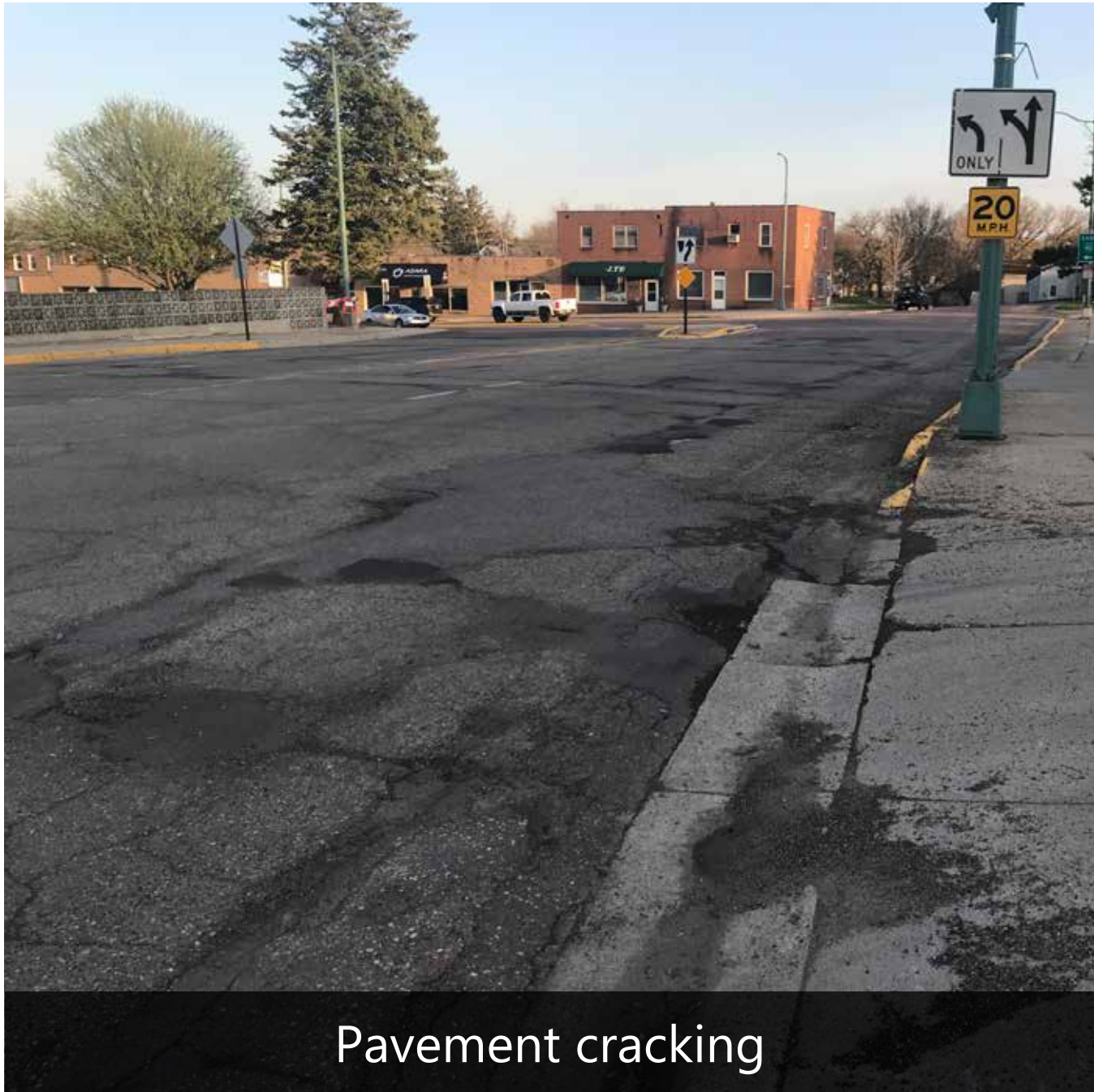


Improve intersection and corridor safety for all users



Identify changes needed to on-street parking

Aging Infrastructure



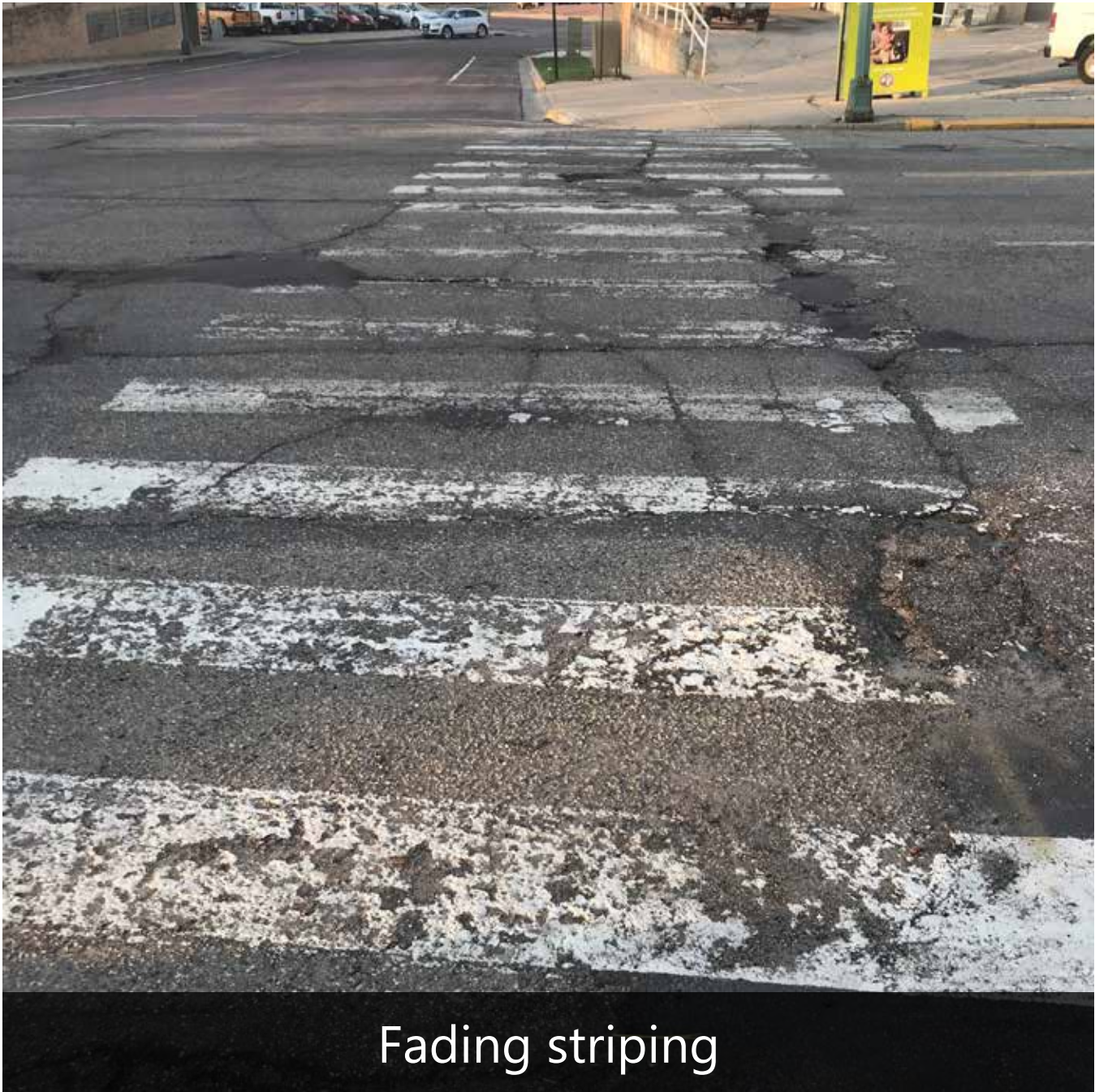
Ped/Bike & Transit

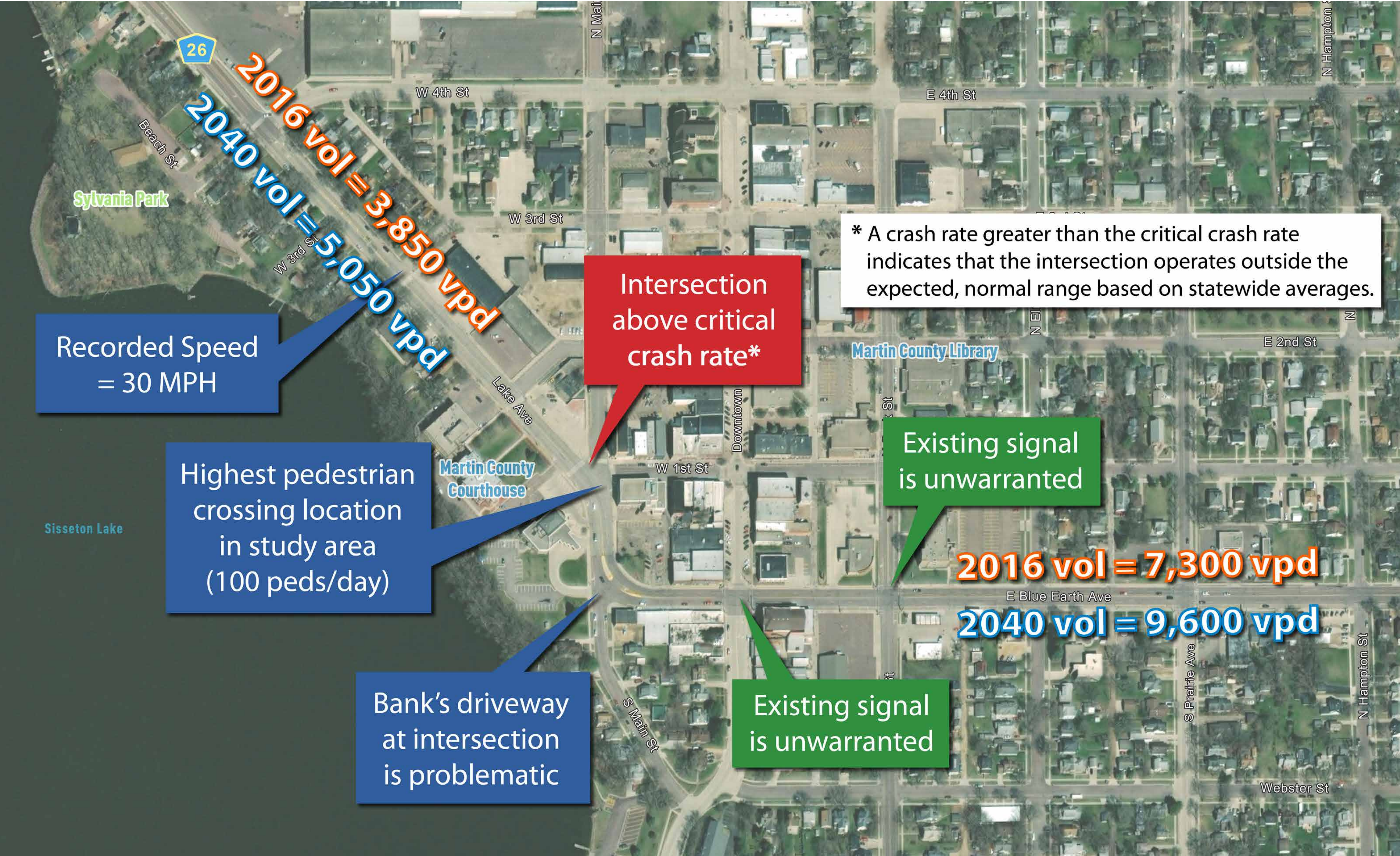


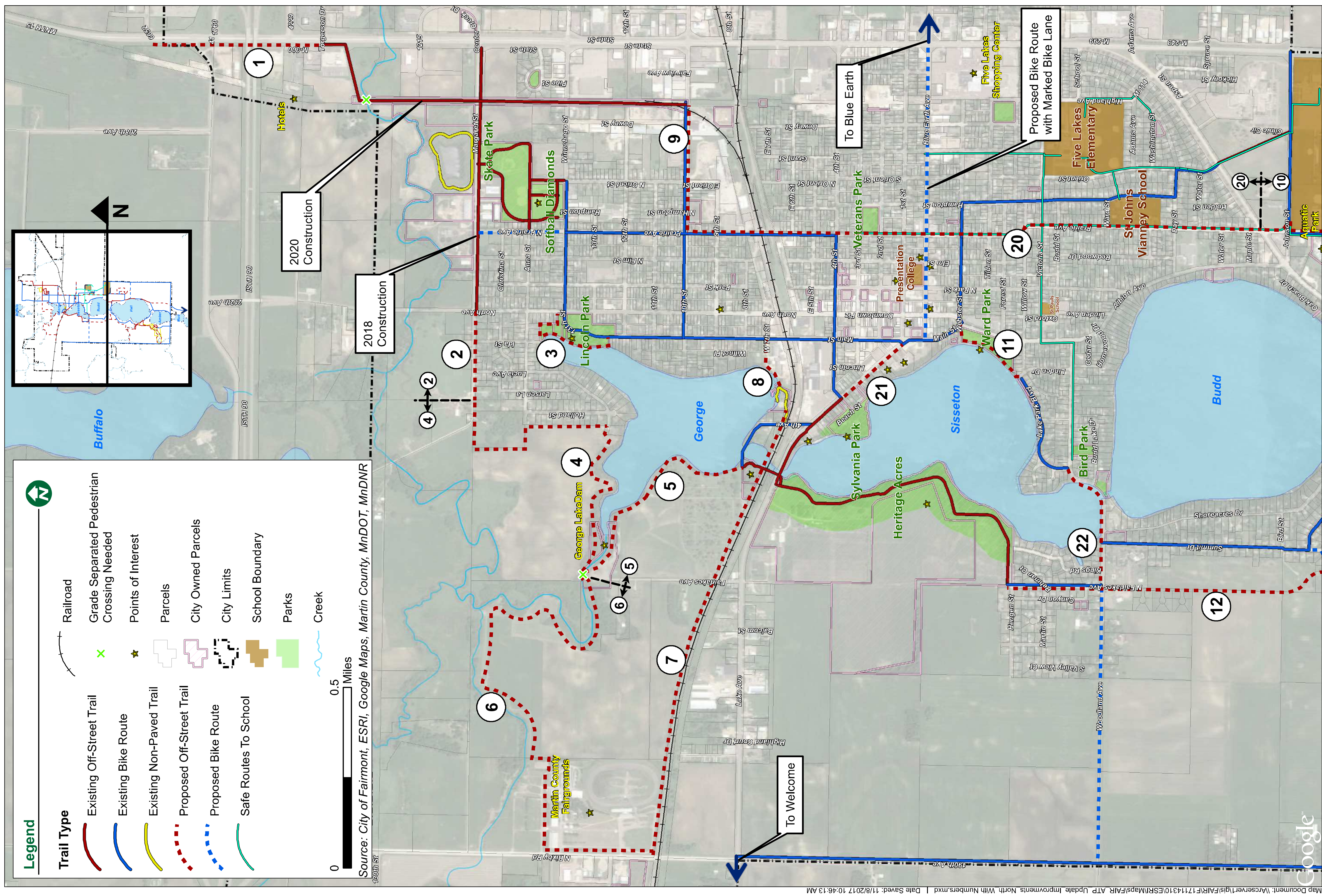
Traffic Operations & Safety



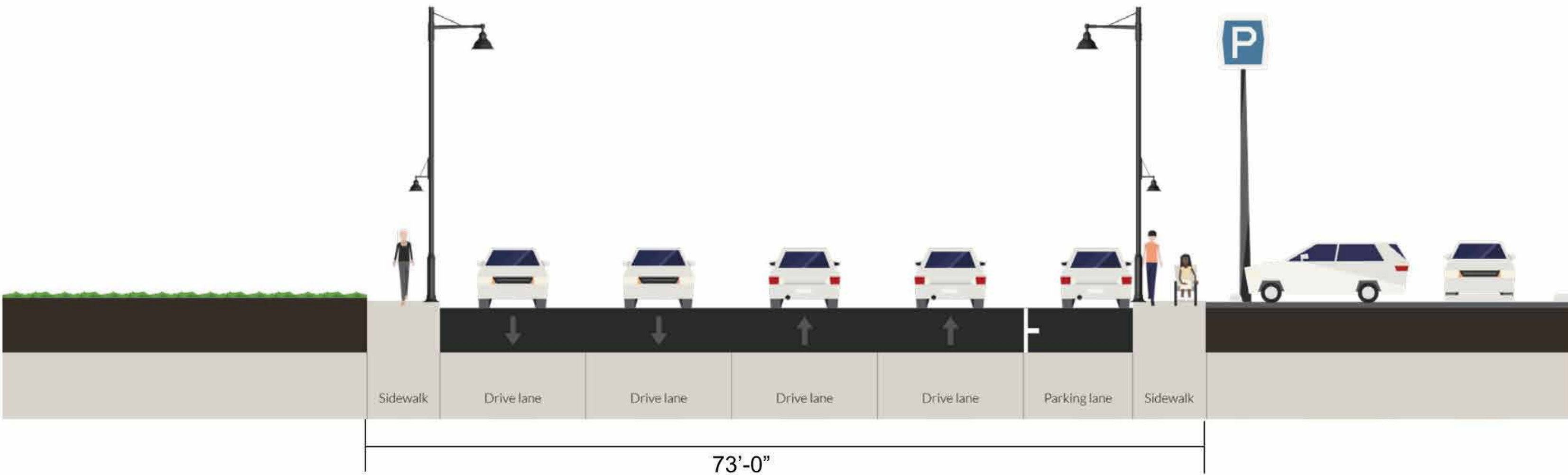
Streetscape Elements



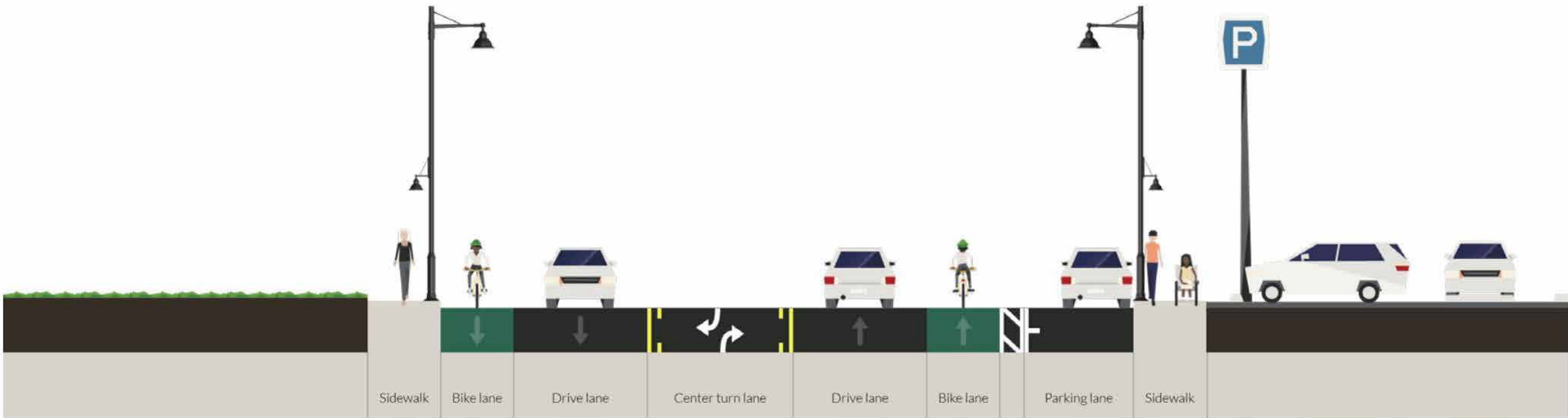




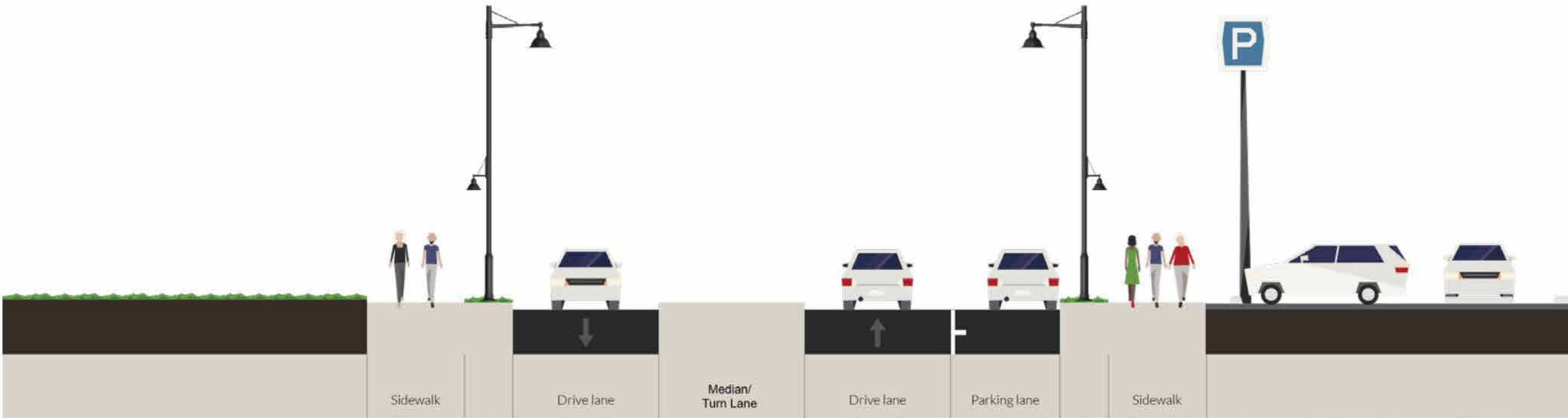
Lake Ave (Existing)



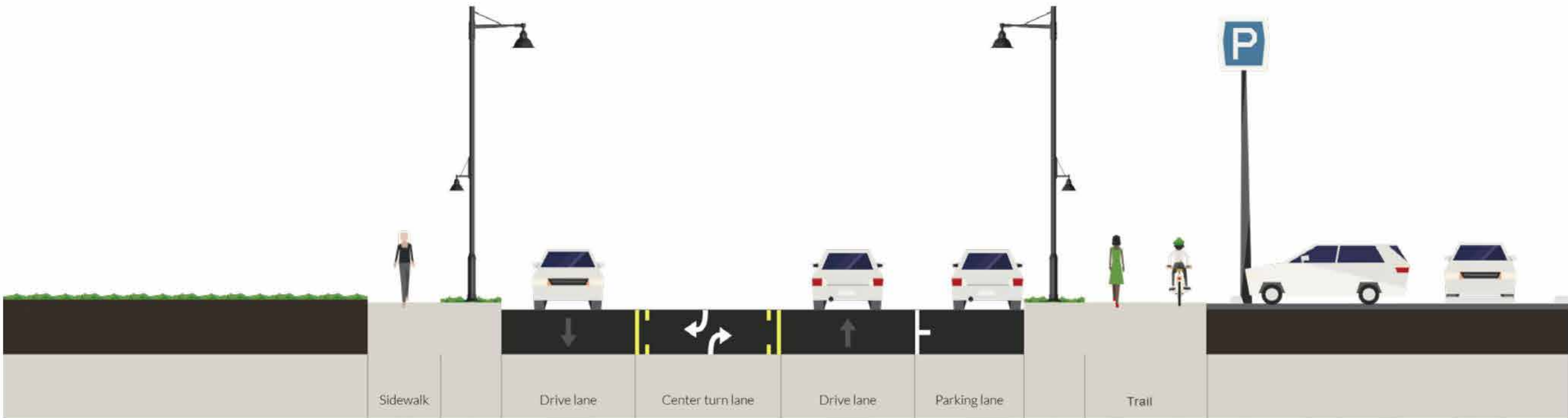
Lake Ave (Proposed Option A)

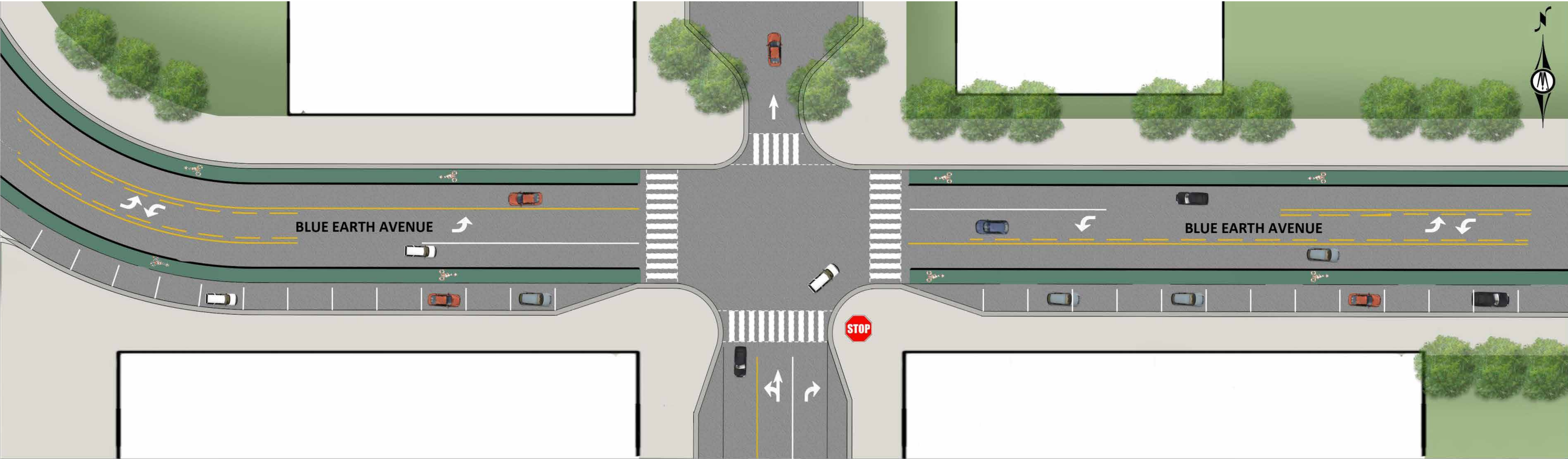


Lake Ave (Proposed Option B)

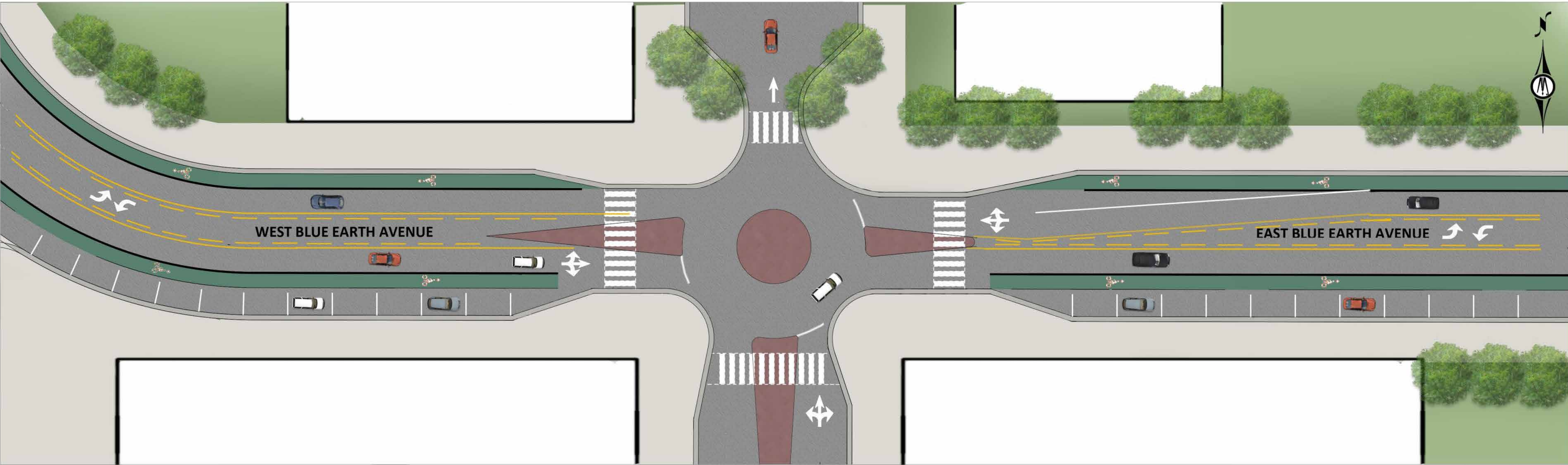


Lake Ave (Proposed Option C)

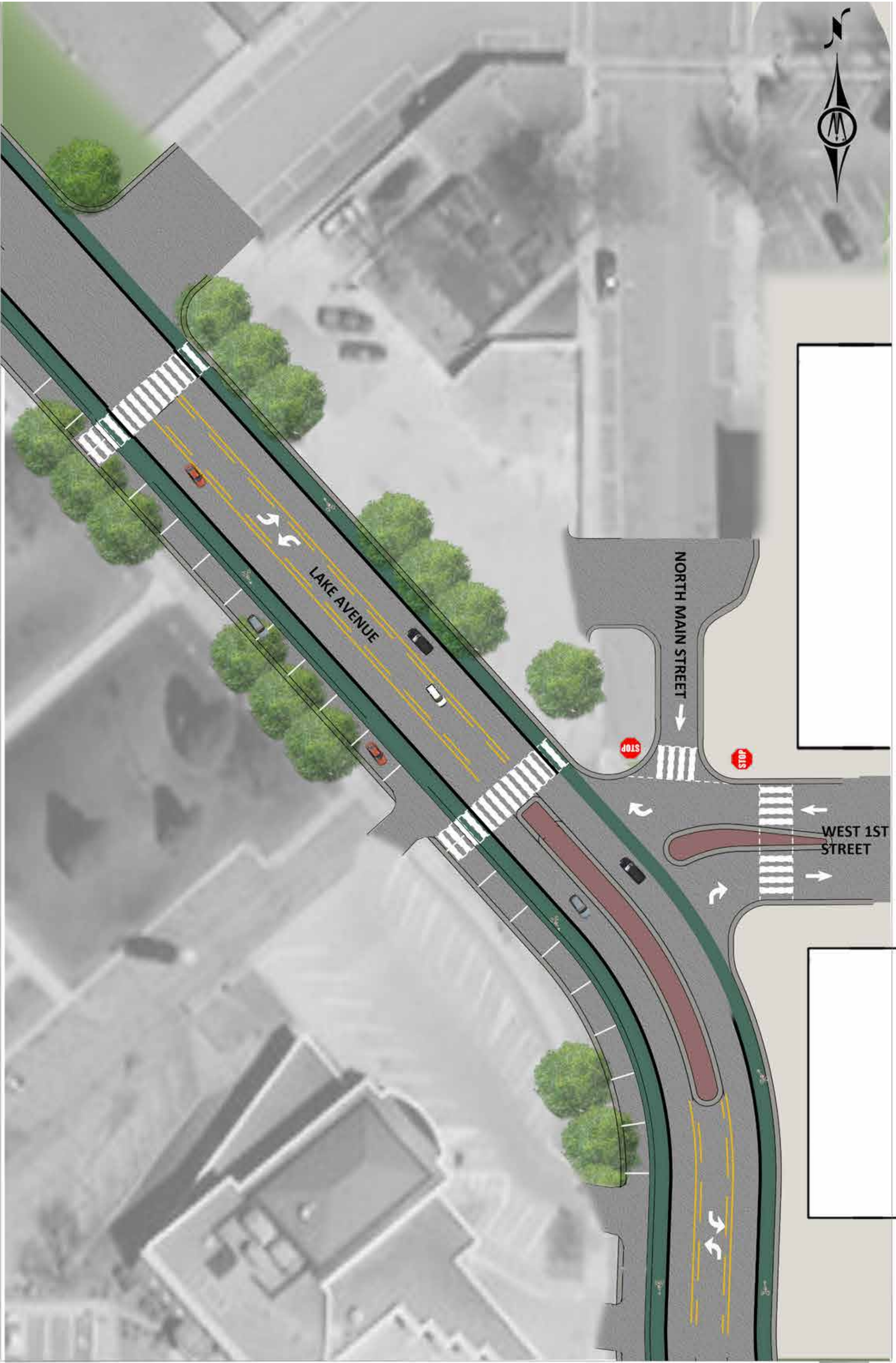




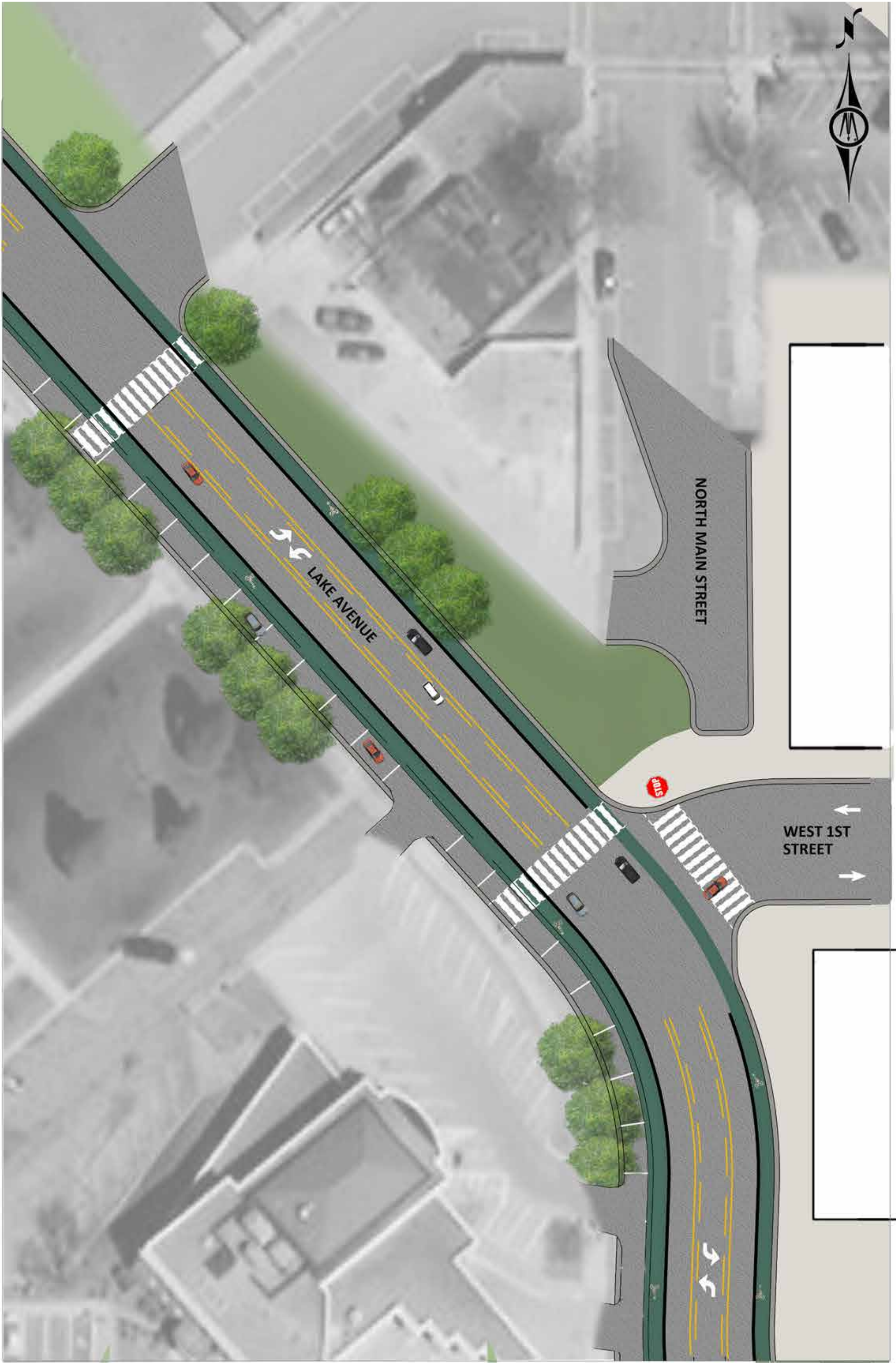
OPTION A - DOWNTOWN PLAZA - SIDE STREET STOP



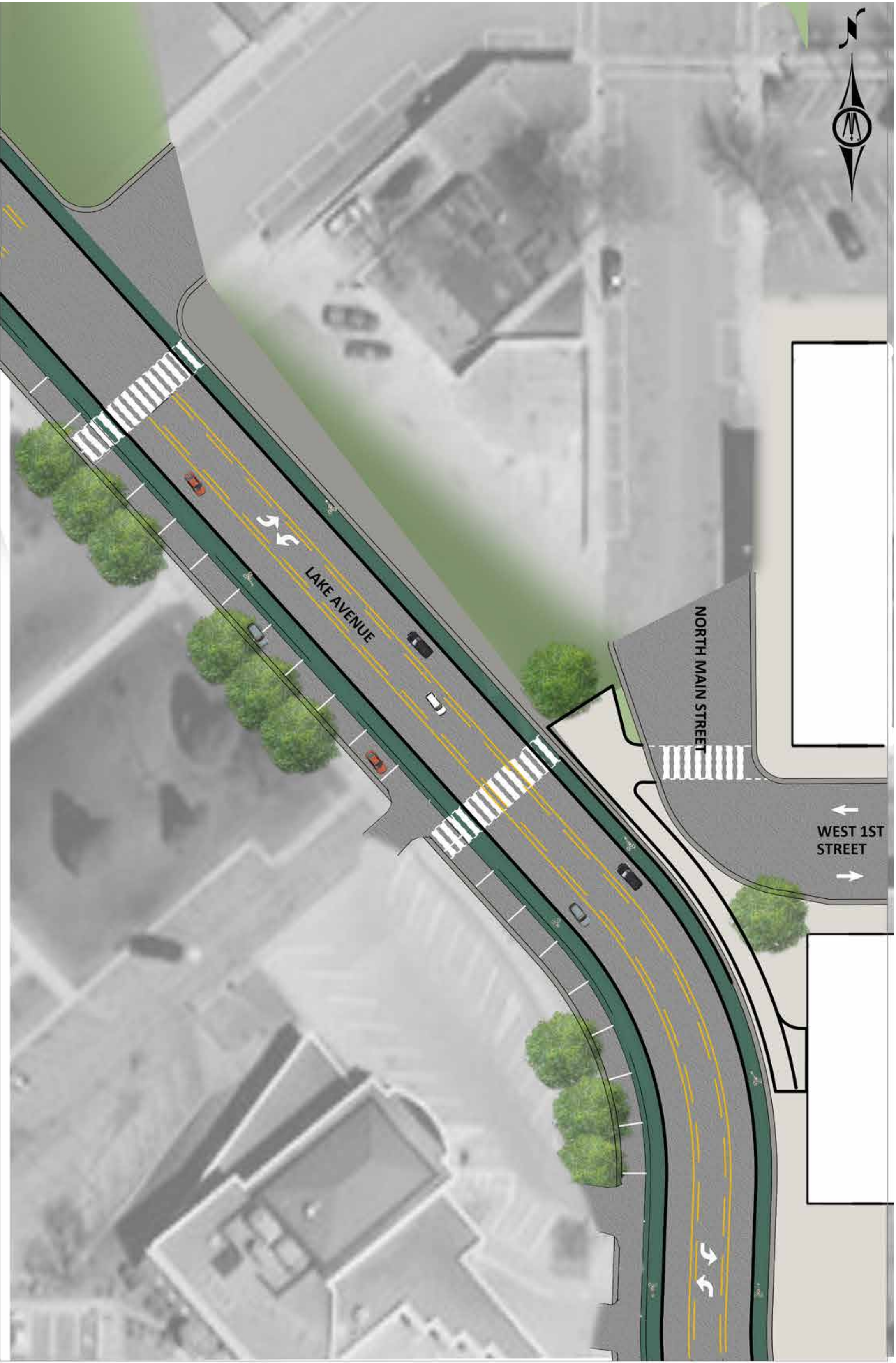
OPTION B - DOWNTOWN PLAZA - MINI ROUNDABOUT



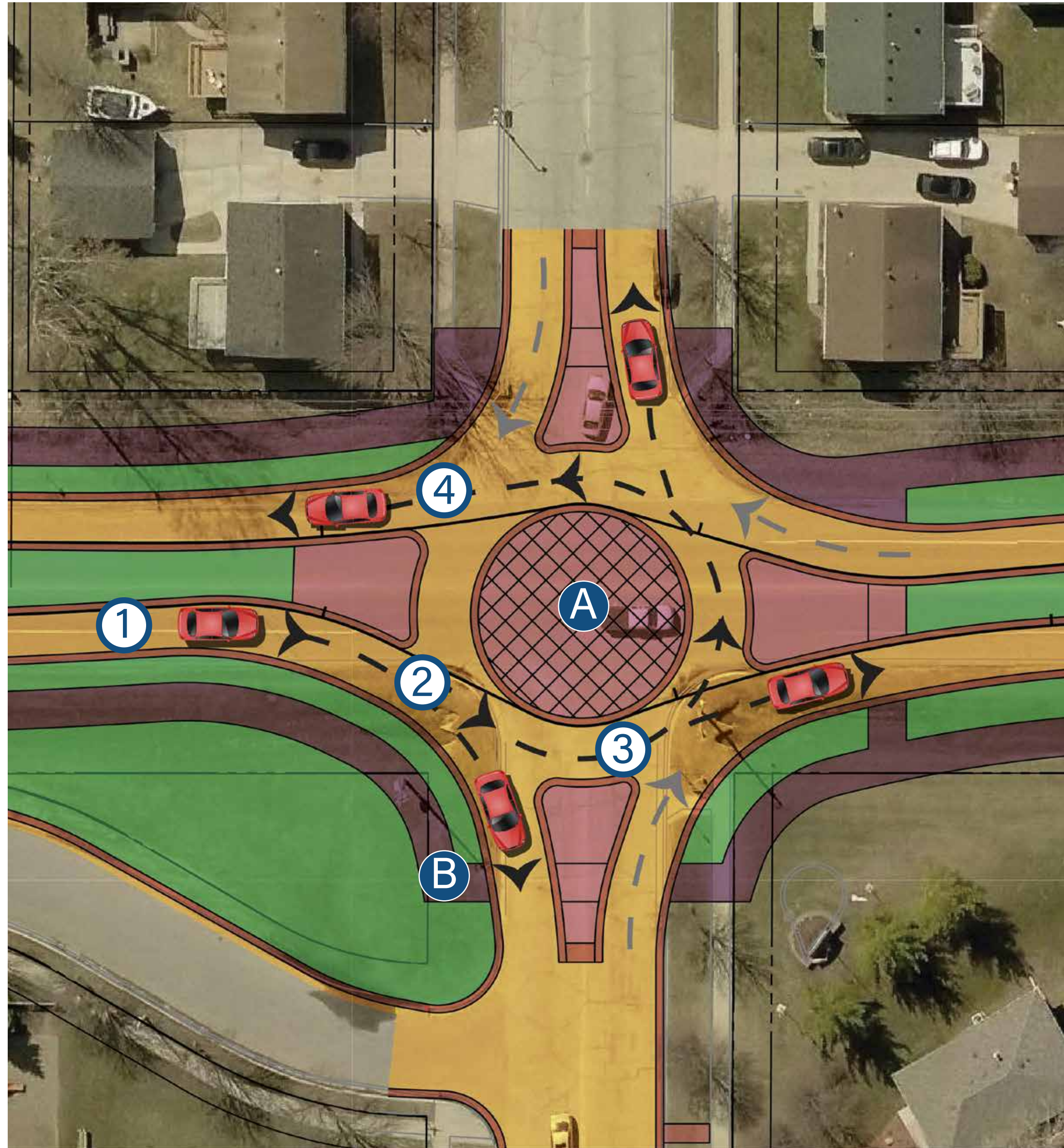
OPTION A - LIMITED ACCESS FROM 1ST & MAIN TO LAKE
WITH RAISED MEDIAN



OPTION B - MAIN CLOSED, RIGHT IN RIGHT OUT FROM 1ST



OPTION C - NO ACCESS FROM 1ST & MAIN TO LAKE



A mini-roundabout is a type of intersection that can be used in constrained locations in place of stop-controlled or signalized intersections to help improve safety and reduce delays. Generally, a mini-roundabout is small enough to be constructed within the existing intersection.

Navigating a Mini-Roundabout

- ① **Approach:** Slow down and stop for pedestrians in the crosswalk.
- ② **Enter:** Yield to vehicles approaching from the left, yield to all large vehicles including trucks, buses and emergency vehicles.
- ③ **Proceed:** Continue through the roundabout until you reach your street. Never stop for other cars while in the roundabout.
- ④ **Exit:** When exiting the roundabout, stop for pedestrians in the crosswalk.

Key Characteristics

- A Center Island:** Mountable/traversable for larger vehicles. If a larger vehicle is on another approach with their turn signal on, do not enter the roundabout. Larger vehicles will use the entire intersection to complete their movement.
- B Crosswalk:** Reduces number of conflict points for pedestrians crossing. pedestrians should always look in the direction of approaching traffic to make sure cars stop before crossing. Cross one lane at a time.

Mini-Roundabout in St. James

