

SAP 038-635-001 CSAH 35 (4TH AVE.)

STA. 13+07.38 TO STA. 17+93.06

FUNCTIONAL CLASSIFICATION MAJOR COLLECTOR
R-VALUE 10
ΣN-18 163,000 18 kips ESAL's
NO. & WIDTH OF TRAFFIC LANES 2 @ 12 ft
NO. & WIDTH OF PARKING LANES 1 @ 9 ft, 1 @ 8 ft
ADT 2021 721
ADT (PROJECTED YEAR) 2041 865
HCADT (PROJECTED YEAR) 2041 90 (10%)
DESIGN SPEED 30 mph
DESIGN LOAD 10 ton

DESIGN SPEED NOT ACHIEVED AT:

STOPPED CONDITION

DESIGN SPEED FOR ROADWAY BASED ON

ON STOPPING SIGHT DISTANCE:

HEIGHT OF EYE = 3.5 FT

HEIGHT OF OBJECT = 2.0 FT

SAP 038-630-001 CSAH 30 (8TH STREET)

STA. 51+02.35 TO STA. 61+55.28

FUNCTIONAL CLASSIFICATION MAJOR COLLECTOR
R-VALUE 10
ΣN-18 117,000 18 kips ESAL's
NO. & WIDTH OF TRAFFIC LANES 2 @ 14 ft
NO. & WIDTH OF PARKING LANES 1 @ 8 ft
ADT (PRESENT YEAR) 2021 577
ADT (PROJECTED YEAR) 2041 692
HCADT (PROJECTED YEAR) 2041 70 (10%)
DESIGN SPEED 30 mph
DESIGN LOAD 10 ton

DESIGN SPEED NOT ACHIEVED AT:

STOPPED CONDITION

DESIGN SPEED FOR ROADWAY BASED ON

ON STOPPING SIGHT DISTANCE:

HEIGHT OF EYE = 3.5 FT

HEIGHT OF OBJECT = 2.0 FT

SAP 038-620-010 CSAH 20 (7TH STREET)

STA. 65+50.00 TO STA. 66+39.72

FUNCTIONAL CLASSIFICATION MAJOR COLLECTOR
R-VALUE 10
ΣN-18 117,000 18 kips ESAL's
NO. & WIDTH OF TRAFFIC LANES 2 @ 15 ft
NO. & WIDTH OF PARKING LANES 2 @ 8 ft
ADT (PRESENT YEAR) 2021 3193
ADT (PROJECTED YEAR) 2041 3832
HCADT (PROJECTED YEAR) 2041 380 (10%)
DESIGN SPEED 30 mph
DESIGN LOAD 10 ton

DESIGN SPEED NOT ACHIEVED AT:

STOPPED CONDITION

DESIGN SPEED FOR ROADWAY BASED ON

ON STOPPING SIGHT DISTANCE:

HEIGHT OF EYE = 3.5 FT

HEIGHT OF OBJECT = 2.0 FT

TYPICAL PLAN SCALE UNLESS OTHERWISE NOTED:

HORIZONTAL SCALE 0 25 50 FEET

VERTICAL SCALE 0 5 10 FEET

NOTE: EXISTING UTILITY INFORMATION SHOWN ON THIS PLAN HAS BEEN PROVIDED BY THE UTILITY OWNER. THE CONTRACTOR SHALL FIELD VERIFY EXACT LOCATIONS PRIOR TO COMMENCING CONSTRUCTION AS REQUIRED BY STATE LAW. NOTIFY GOPHER STATE ONE CALL, 1-800-252-1166 OR 651-454-0002.

THE SUBSURFACE UTILITY INFORMATION IN THIS PLAN IS UTILITY QUALITY LEVEL D UNLESS OTHERWISE NOTED. THIS UTILITY LEVEL WAS DETERMINED ACCORDING TO THE GUIDELINES OF CI/ASCE 38-02, ENTITLED "STANDARD GUIDELINES FOR THE COLLECTION AND DEPICTION OF EXISTING SUBSURFACE UTILITY DATA."

BM=640.616
MnDot Point # 3805 R
Latitude: 47 01 34.88160
Longitude: 91 39 53.00051

PROJECT DATUM:
HORIZONTAL: Lake County NAD83 (2011 Adjustment)
VERTICAL: NAVD88 Datum

RECORD DRAWING INFORMATION table with columns: NO., REVISION, DATE

Table with columns: DESIGNED, DRAWN, CHECKED, DATE

MINNESOTA DEPARTMENT OF TRANSPORTATION
LAKE COUNTY & CITY OF TWO HARBORS
LAKE COUNTY, MINNESOTA
2021 STREET & UTILITY IMPROVEMENTS
COUNTY STATE AID HIGHWAYS 20, 30 & 35
CITY OF TWO HARBORS 4TH AVENUE, 5TH AVENUE & 6TH AVENUE

CONSTRUCTION PLAN FOR: GRADING, AGGREGATE BASE, BITUMINOUS PAVEMENT, CONCRETE CURB AND GUTTER, CONCRETE WALK, ADA IMPROVEMENTS, STORM SEWER, SANITARY SEWER, WATER MAIN AND RELATED APPURTENANCES. ALTERNATE 1: STREET LAYOUT WITH PARKING AND BUS DROP OFF FOR 5TH AVENUE. ALTERNATE 2: STORM SEWER STRUCTURES ON CSAH 30.

CONSTRUCTION PLAN FOR:

SAP 038-635-001 LOCATED ON CSAH 35 (4TH AVENUE) FROM WEST OF 8TH STREET TO WEST OF 7TH STREET

SAP 038-630-001 LOCATED ON CSAH 30 (8TH STREET) FROM SOUTH OF 4TH AVENUE TO SOUTH OF HIGHWAY 61

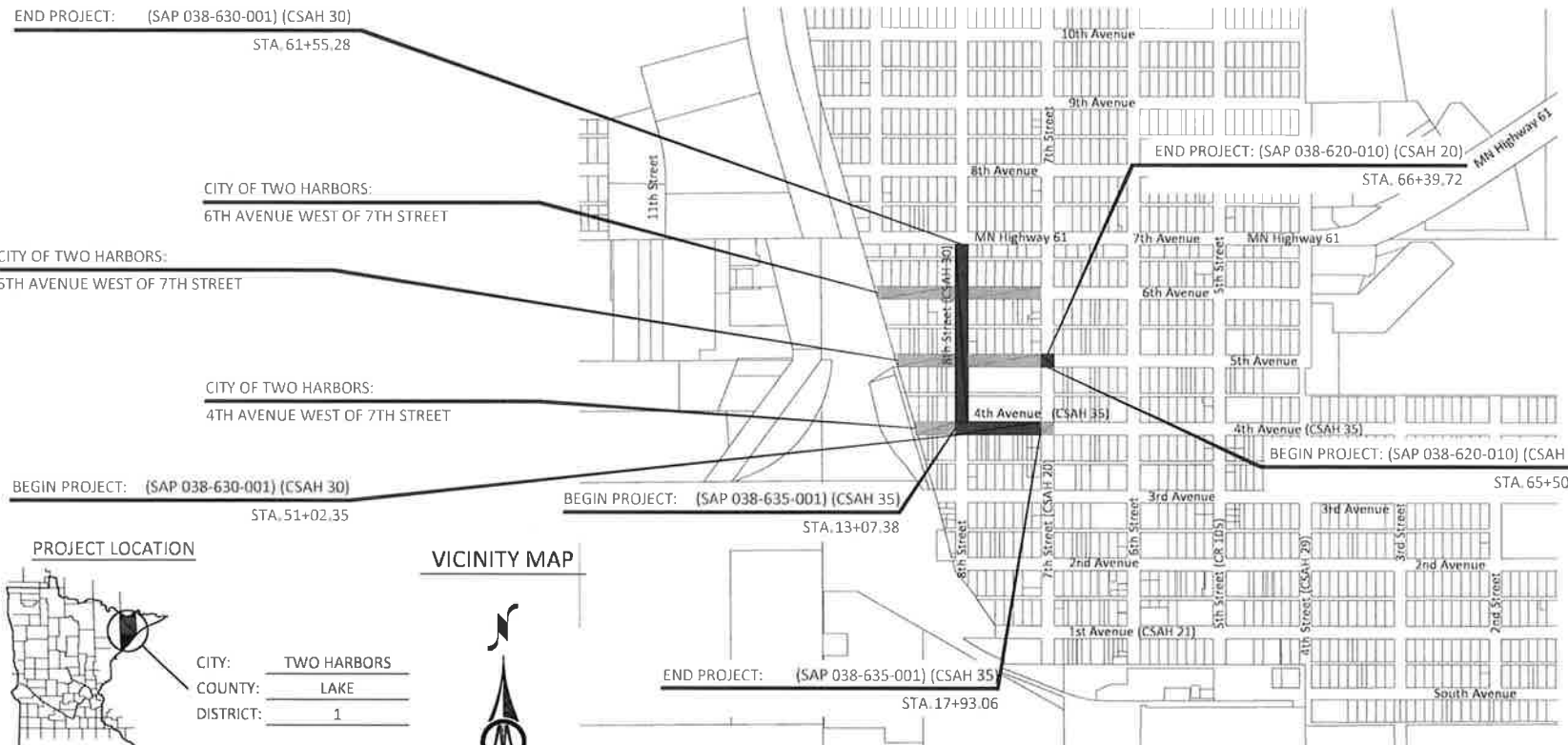
SAP 038-620-010 LOCATED ON CSAH 20 (7TH STREET) FROM SOUTH OF 5TH AVENUE TO NORTH OF 5TH AVENUE

CITY PROJECT LOCATED ON 4TH AVENUE FROM WEST END OF 4TH AVENUE TO WEST OF 7TH STREET (CSAH 20)

CITY PROJECT LOCATED ON 5TH AVENUE FROM WEST END OF 5TH AVENUE TO WEST OF 7TH STREET (CSAH 20)

CITY PROJECT LOCATED ON 6TH AVENUE FROM WEST END OF 6TH AVENUE TO WEST OF 7TH STREET (CSAH 20)

Summary table for CSAH 30, CSAH 35, and CSAH 20 projects showing Gross Length, Bridge Length, Exception Length, and Net Length in feet and miles.



PROJECT LOCATION

VICINITY MAP



CITY: TWO HARBORS
COUNTY: LAKE
DISTRICT: 1



INDEX MAP SCALE 0 500 1000 FEET

MINN. PROJ. NO.

GOVERNING SPECIFICATIONS
THE 2018 EDITION OF THE MINNESOTA DEPARTMENT OF TRANSPORTATION
"STANDARD SPECIFICATION FOR CONSTRUCTION" SHALL GOVERN.

ALL TRAFFIC CONTROL DEVICES AND SIGNING SHALL CONFORM AND BE INSTALLED IN ACCORDANCE WITH THE "MINNESOTA MANUAL ON UNIFORM TRAFFIC CONTROL DEVICES" (MN MUTCD) AND PART VI, "FIELD MANUAL" FOR TEMPORARY TRAFFIC CONTROL DEVICES.

SHEET NUMBER and SHEET TITLE table listing sheets G0.01 through G9.01 and their titles.

THIS PLAN SET CONTAINS 94 SHEETS.

Professional Engineer signature and information for Joseph D. Pelawa, P.E.

License Number 42603 Date 12/15/2020

City of Two Harbors Engineer signature and information.

Lake County Engineer signature and information.

District State Aid Engineer information.

Approved for State Aid Funding: State Aid Engineer

STATE AID PROJ. NO. S.A.P. 038-630-001
STATE AID PROJ. NO. S.A.P. 038-635-001
STATE AID PROJ. NO. S.A.P. 038-620-010

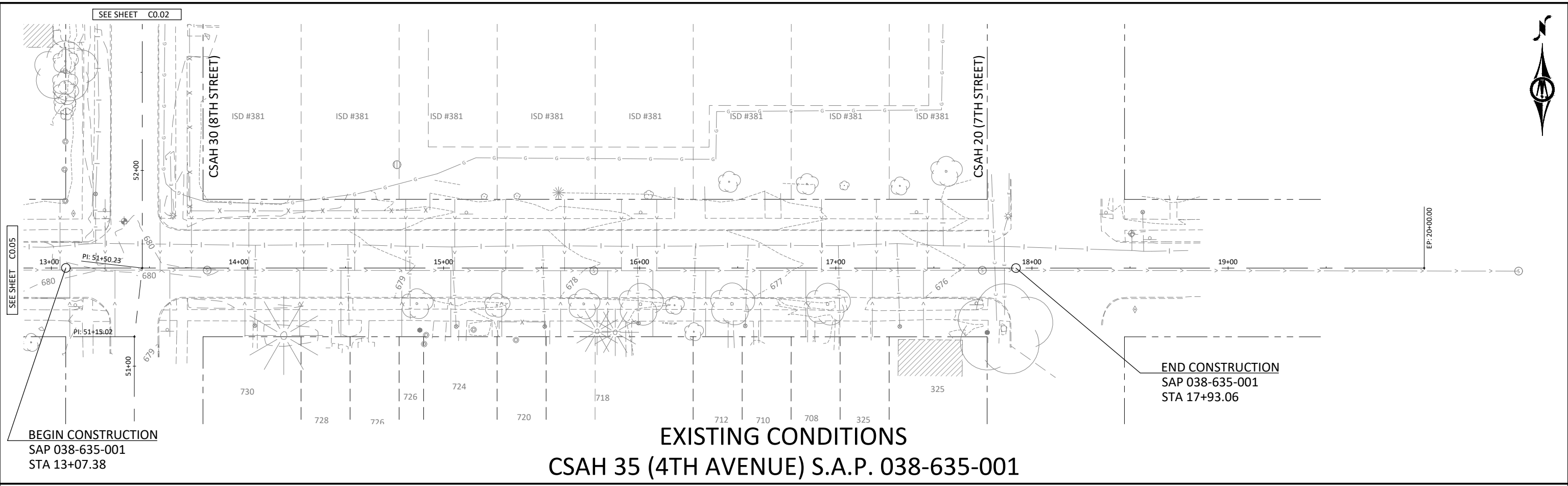
LAKE COUNTY, MINNESOTA
2021 STREET & UTILITY IMPROVEMENTS
S.A.P. 038-630-001, S.A.P. 038-635-001, S.A.P. 038-620-010

SHEET G0.01

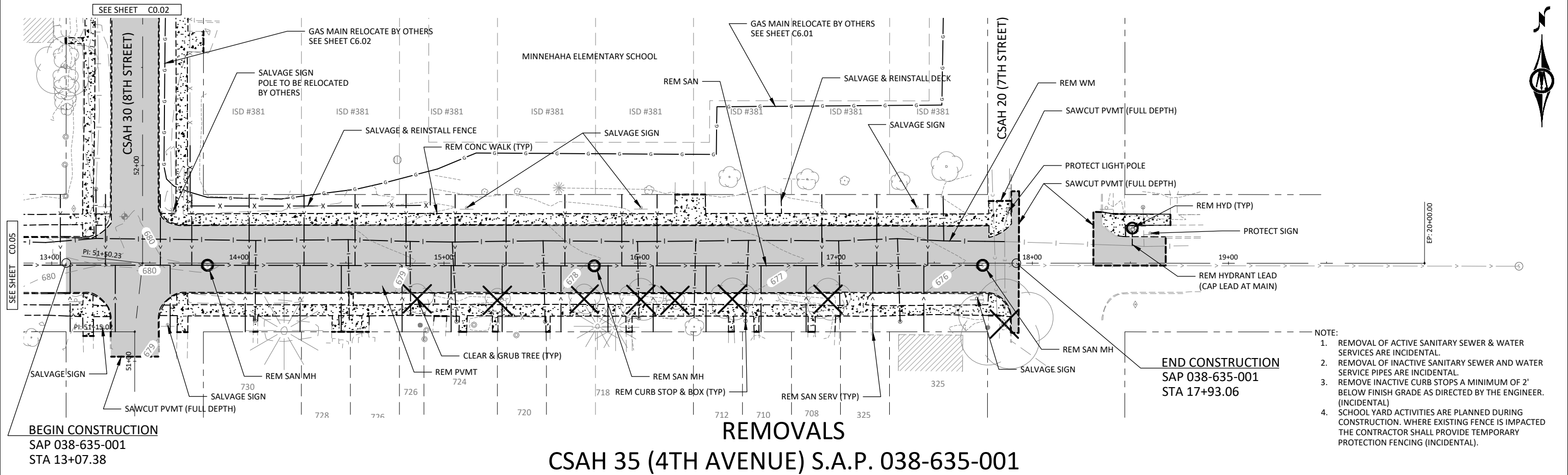


4960 MILLER TRUNK HIGHWAY, SUITE 350
DULUTH, MINNESOTA 55811
Phone: (218) 729-5939
Email: BMi@bolton-menk.com
www.bolton-menk.com





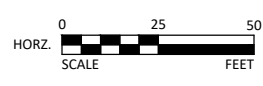
EXISTING CONDITIONS
CSAH 35 (4TH AVENUE) S.A.P. 038-635-001



REMOVALS
CSAH 35 (4TH AVENUE) S.A.P. 038-635-001

- NOTE:**
1. REMOVAL OF ACTIVE SANITARY SEWER & WATER SERVICES ARE INCIDENTAL.
 2. REMOVAL OF INACTIVE SANITARY SEWER AND WATER SERVICE PIPES ARE INCIDENTAL.
 3. REMOVE INACTIVE CURB STOPS A MINIMUM OF 2' BELOW FINISH GRADE AS DIRECTED BY THE ENGINEER. (INCIDENTAL)
 4. SCHOOL YARD ACTIVITIES ARE PLANNED DURING CONSTRUCTION. WHERE EXISTING FENCE IS IMPACTED THE CONTRACTOR SHALL PROVIDE TEMPORARY PROTECTION FENCING (INCIDENTAL).

© Bolton & Menk, Inc. 2021. All Rights Reserved. PLUME_CO_001(17)20606(CAD)038-635-001.dwg 2/1/2021 8:45:20 AM



I HEREBY CERTIFY THAT THIS PLAN, SPECIFICATION, OR REPORT WAS PREPARED BY ME OR UNDER MY DIRECT SUPERVISION AND THAT I AM A DULY LICENSED PROFESSIONAL ENGINEER UNDER THE LAWS OF THE STATE OF MINNESOTA.

Joseph D. Pelawa
 JOSEPH D. PELAWA, P.E.
 LIC. NO. 42603 DATE 12/15/2020



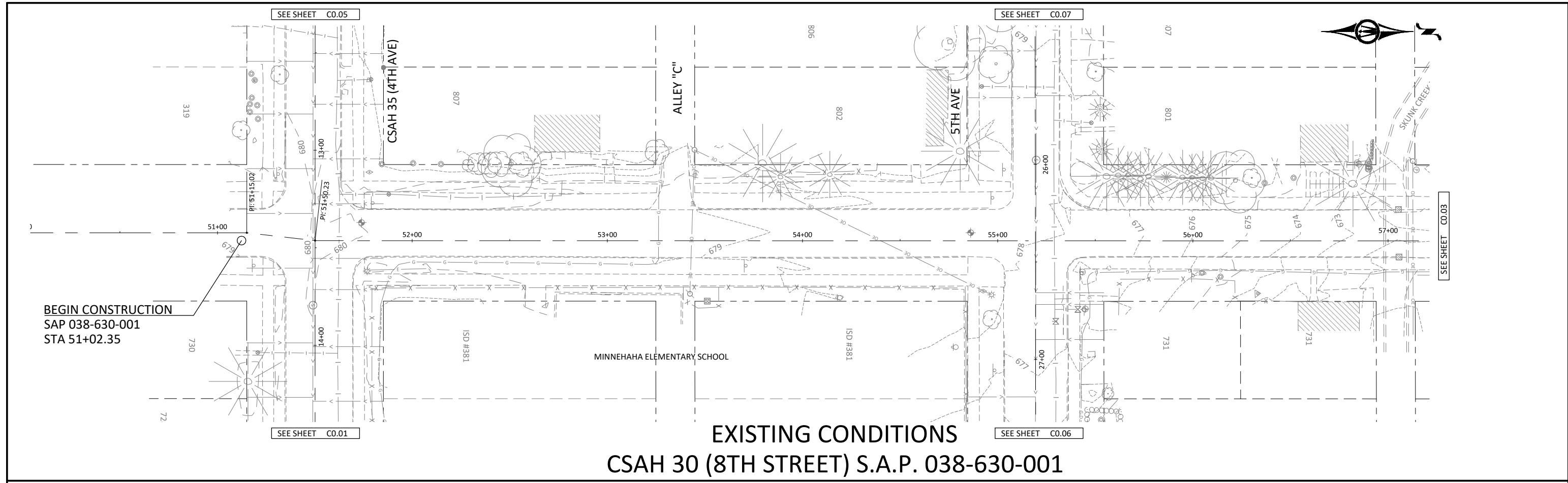
4960 MILLER TRUNK HIGHWAY, SUITE 350
 DULUTH, MINNESOTA 55811
 Phone: (218) 729-5939
 Email: BMI@bolton-menk.com
 www.bolton-menk.com



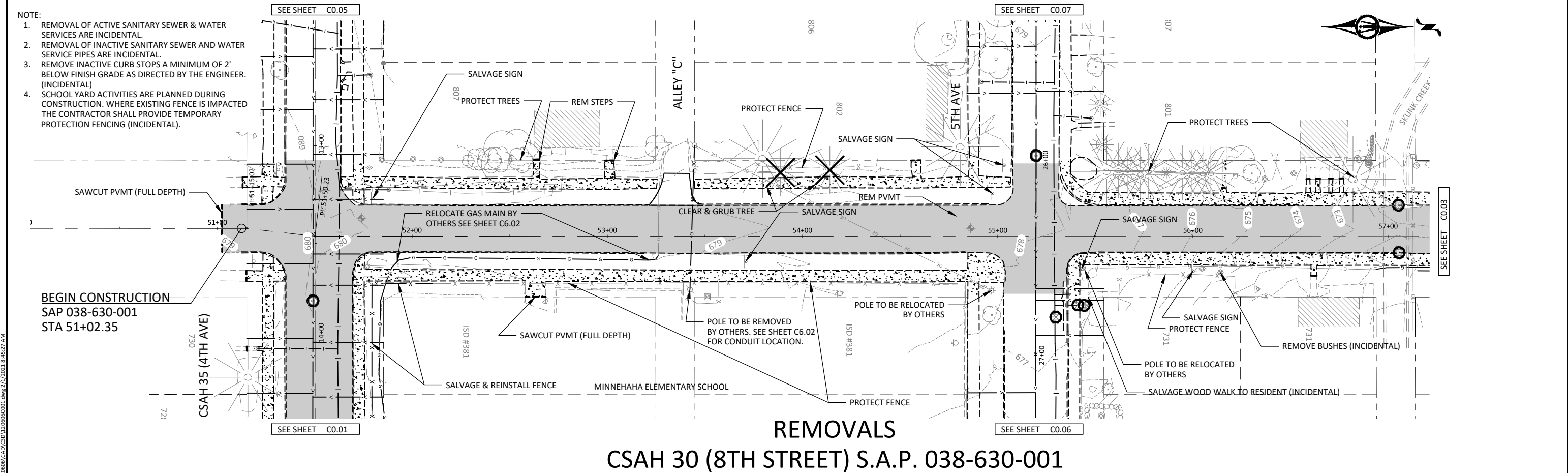
DESIGNED	NO.	ISSUED FOR	DATE
AJN	1	SA SUBMIT	1/13/21
AJN	2	SA SUBMIT	2/1/21
CHECKED			
JDP			
CLIENT PROJ. NO.	U17.120606		

LAKE COUNTY, MINNESOTA
 2021 STREET & UTILITY IMPROVEMENTS
 S.A.P. 038-630-001, S.A.P. 038-635-001, S.A.P. 038-620-010
 EXISTING CONDITIONS & REMOVALS - CSAH 35 (4TH AVENUE)

SHEET
C0.01



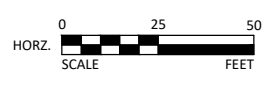
EXISTING CONDITIONS
CSAH 30 (8TH STREET) S.A.P. 038-630-001



REMOVALS
CSAH 30 (8TH STREET) S.A.P. 038-630-001

- NOTE:**
1. REMOVAL OF ACTIVE SANITARY SEWER & WATER SERVICES ARE INCIDENTAL.
 2. REMOVAL OF INACTIVE SANITARY SEWER AND WATER SERVICE PIPES ARE INCIDENTAL.
 3. REMOVE INACTIVE CURB STOPS A MINIMUM OF 2' BELOW FINISH GRADE AS DIRECTED BY THE ENGINEER. (INCIDENTAL)
 4. SCHOOL YARD ACTIVITIES ARE PLANNED DURING CONSTRUCTION. WHERE EXISTING FENCE IS IMPACTED THE CONTRACTOR SHALL PROVIDE TEMPORARY PROTECTION FENCING (INCIDENTAL).

BEGIN CONSTRUCTION
 SAP 038-630-001
 STA 51+02.35



I HEREBY CERTIFY THAT THIS PLAN, SPECIFICATION, OR REPORT WAS PREPARED BY ME OR UNDER MY DIRECT SUPERVISION AND THAT I AM A DULY LICENSED PROFESSIONAL ENGINEER UNDER THE LAWS OF THE STATE OF MINNESOTA.

Joseph D. Pelawa
 JOSEPH D. PELAWA, P.E.
 42603 DATE 12/15/2020



4960 MILLER TRUNK HIGHWAY, SUITE 350
 DULUTH, MINNESOTA 55811
 Phone: (218) 729-5939
 Email: BMI@bolton-menk.com
 www.bolton-menk.com

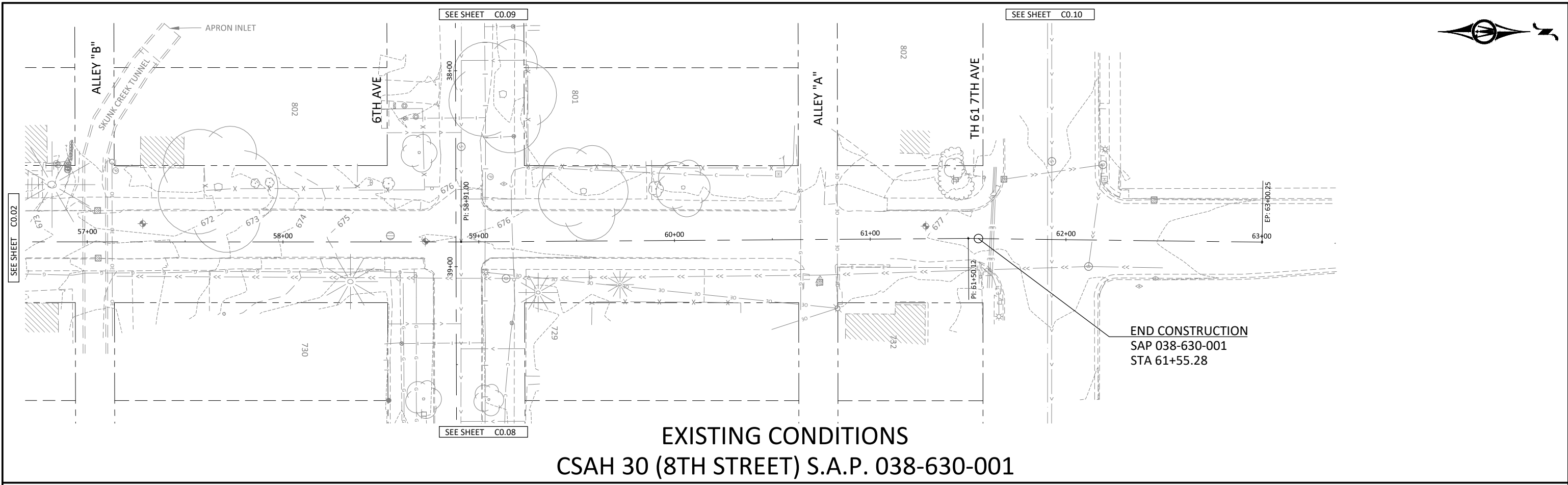


DESIGNED	NO.	ISSUED FOR	DATE
AJN	1	SA SUBMIT	1/13/21
AJN	2	SA SUBMIT	2/1/21
CHECKED	JDP		
CLIENT PROJ. NO.	U17.120606		

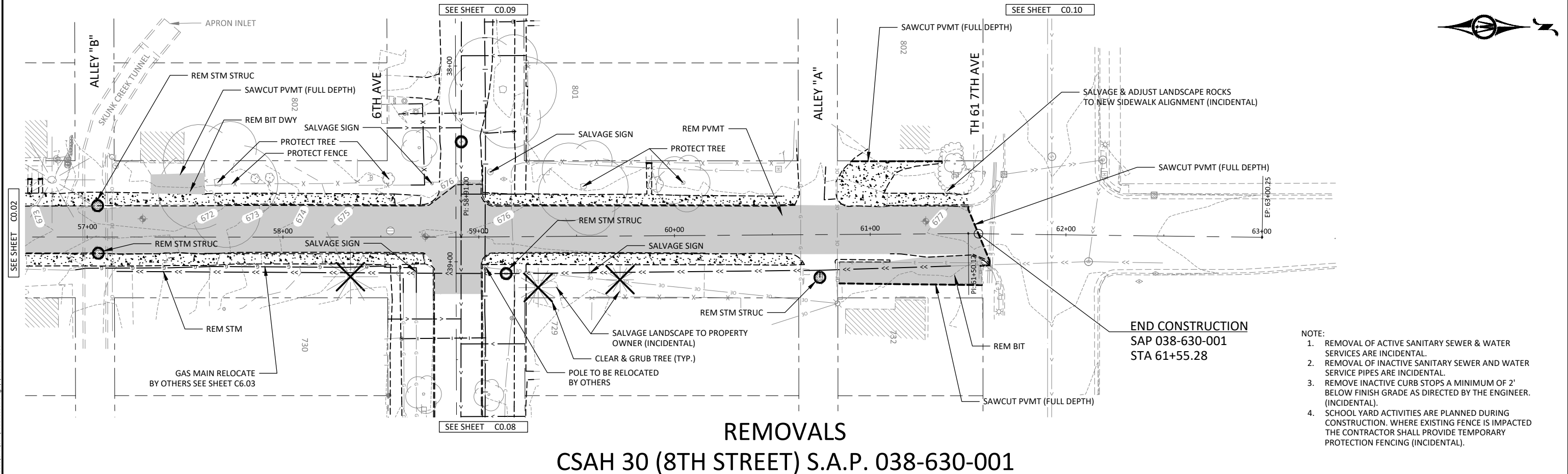
LAKE COUNTY, MINNESOTA
 2021 STREET & UTILITY IMPROVEMENTS
 S.A.P. 038-630-001, S.A.P. 038-635-001, S.A.P. 038-620-010
 EXISTING CONDITIONS & REMOVALS - CSAH 30 (8TH STREET)

SHEET
C0.02

© Bolton & Menk, Inc. 2021. All Rights Reserved. PLUWKE_CO_001\UT17.120606\CAD\C0.02\EXISTING CONDITIONS - CSAH 30 (8TH STREET).dwg 2/1/2021 8:45:27 AM



EXISTING CONDITIONS
CSAH 30 (8TH STREET) S.A.P. 038-630-001



REMOVALS
CSAH 30 (8TH STREET) S.A.P. 038-630-001

- NOTE:
1. REMOVAL OF ACTIVE SANITARY SEWER & WATER SERVICES ARE INCIDENTAL.
 2. REMOVAL OF INACTIVE SANITARY SEWER AND WATER SERVICE PIPES ARE INCIDENTAL.
 3. REMOVE INACTIVE CURB STOPS A MINIMUM OF 2' BELOW FINISH GRADE AS DIRECTED BY THE ENGINEER. (INCIDENTAL).
 4. SCHOOL YARD ACTIVITIES ARE PLANNED DURING CONSTRUCTION. WHERE EXISTING FENCE IS IMPACTED THE CONTRACTOR SHALL PROVIDE TEMPORARY PROTECTION FENCING (INCIDENTAL).

© Bolton & Menk, Inc. 2021. All Rights Reserved. PLUWKE_CO_001\UT120606\CAD\120606-001.dwg 2/1/2021 8:45:33 AM



I HEREBY CERTIFY THAT THIS PLAN, SPECIFICATION, OR REPORT WAS PREPARED BY ME OR UNDER MY DIRECT SUPERVISION AND THAT I AM A DULY LICENSED PROFESSIONAL ENGINEER UNDER THE LAWS OF THE STATE OF MINNESOTA.

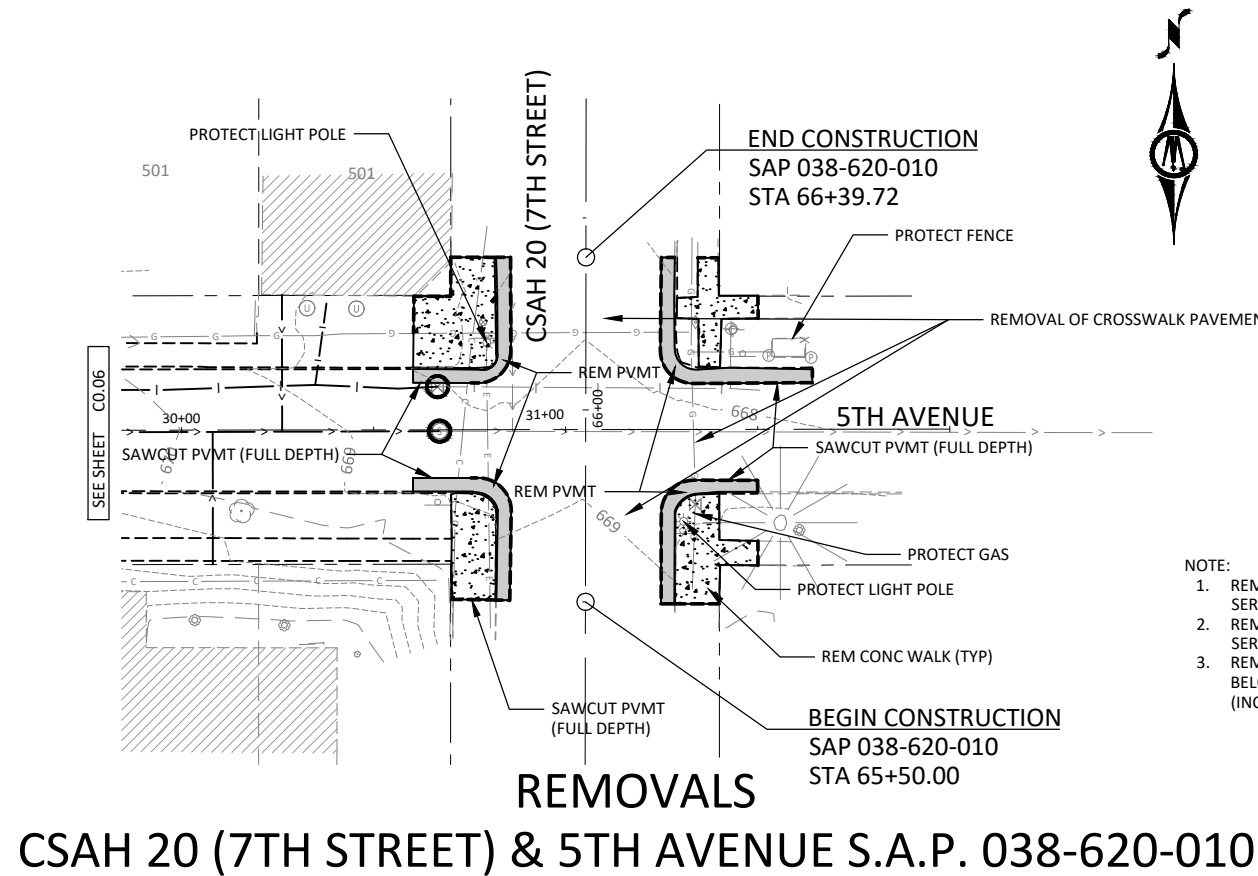
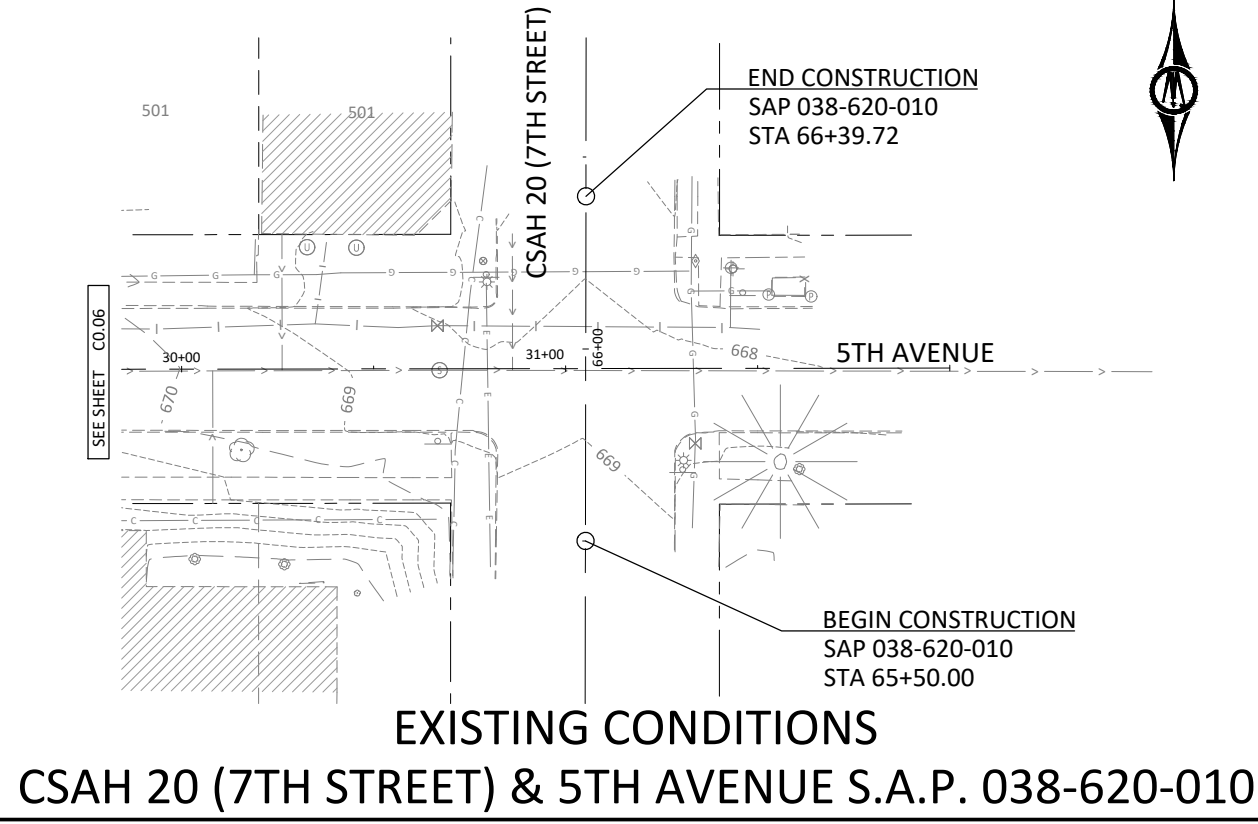
[Signature]
 J. D. PELAWA, P.E.
 LIC. NO. 42603 DATE 12/15/2020



4960 MILLER TRUNK HIGHWAY, SUITE 350
 DULUTH, MINNESOTA 55811
 Phone: (218) 729-5939
 Email: BMI@bolton-menk.com
 www.bolton-menk.com



DESIGNED	NO.	ISSUED FOR	DATE
AJN	1	SA SUBMIT	1/13/21
AJN	2	SA SUBMIT	2/1/21
CHECKED	JDP		
CLIENT PROJ. NO.	U17.120606		



- NOTE:**
1. REMOVAL OF ACTIVE SANITARY SEWER & WATER SERVICES ARE INCIDENTAL.
 2. REMOVAL OF INACTIVE SANITARY SEWER AND WATER SERVICE PIPES ARE INCIDENTAL.
 3. REMOVE INACTIVE CURB STOPS A MINIMUM OF 2' BELOW FINISH GRADE AS DIRECTED BY THE ENGINEER. (INCIDENTAL)

© Bolton & Menk, Inc. 2021. All Rights Reserved. U:\WORK CO_001\17120606\CAD\CAD\17120606-001.dwg 2/1/2021 8:45:39 AM



I HEREBY CERTIFY THAT THIS PLAN, SPECIFICATION, OR REPORT WAS PREPARED BY ME OR UNDER MY DIRECT SUPERVISION AND THAT I AM A DULY LICENSED PROFESSIONAL ENGINEER UNDER THE LAWS OF THE STATE OF MINNESOTA.

[Signature]
D. PELAWA, P.E.
LIC. NO. 42603 DATE 12/15/2020



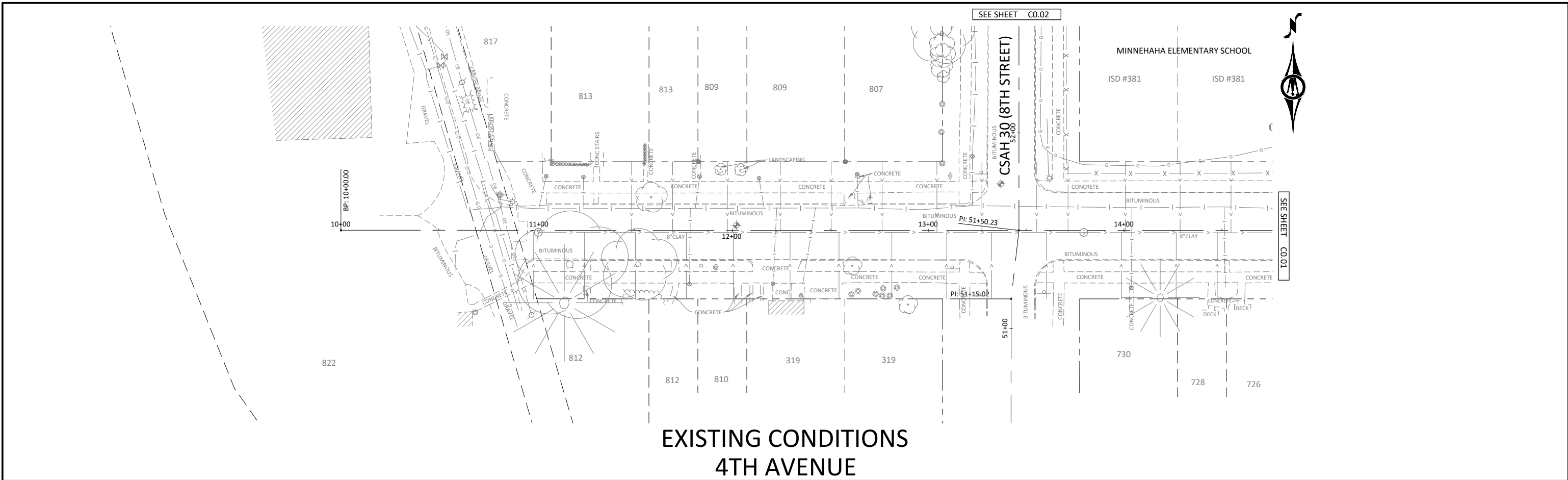
4960 MILLER TRUNK HIGHWAY, SUITE 350
DULUTH, MINNESOTA 55811
Phone: (218) 729-5939
Email: BMI@bolton-menk.com
www.bolton-menk.com



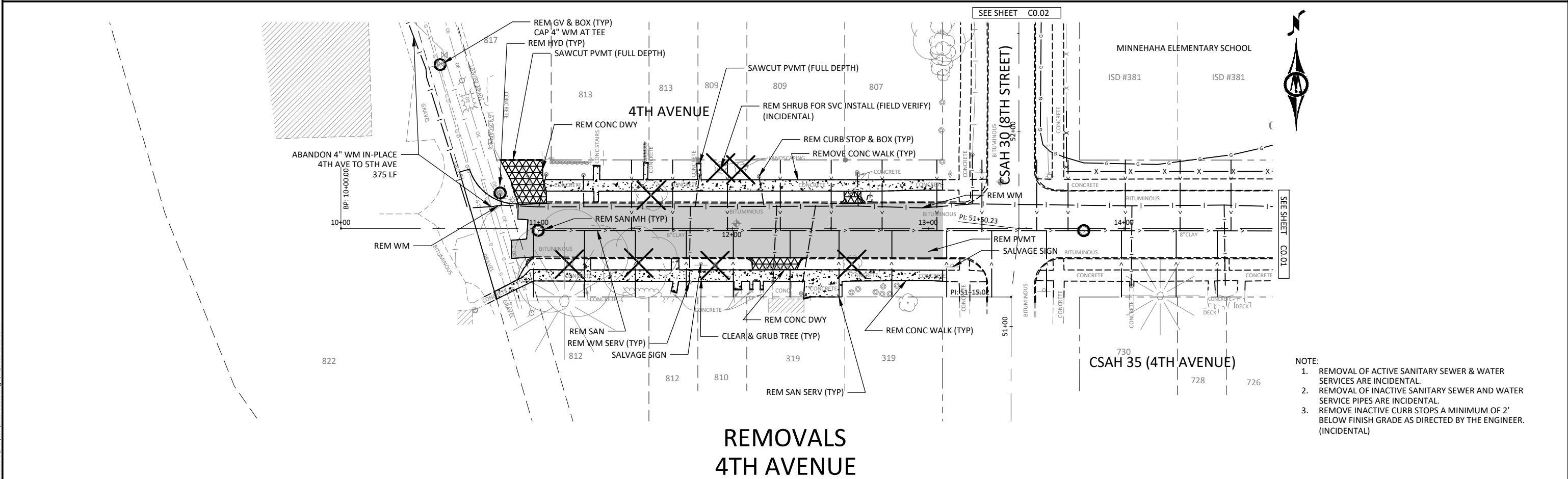
DESIGNED	NO.	ISSUED FOR	DATE
AJN	1	SA SUBMIT	1/13/21
AJN	2	SA SUBMIT	2/1/21
CHECKED			
JDP			
CLIENT PROJ. NO.	U17.120606		

LAKE COUNTY, MINNESOTA
2021 STREET & UTILITY IMPROVEMENTS
S.A.P. 038-630-001, S.A.P. 038-635-001, S.A.P. 038-620-010
EXISTING CONDITIONS & REMOVALS - CSAH 20 (7TH STREET)

SHEET
C0.04



EXISTING CONDITIONS 4TH AVENUE



REMOVALS 4TH AVENUE

- NOTE:**
1. REMOVAL OF ACTIVE SANITARY SEWER & WATER SERVICES ARE INCIDENTAL.
 2. REMOVAL OF INACTIVE SANITARY SEWER AND WATER SERVICE PIPES ARE INCIDENTAL.
 3. REMOVE INACTIVE CURB STOPS A MINIMUM OF 2' BELOW FINISH GRADE AS DIRECTED BY THE ENGINEER. (INCIDENTAL)



I HEREBY CERTIFY THAT THIS PLAN, SPECIFICATION, OR REPORT WAS PREPARED BY ME OR UNDER MY DIRECT SUPERVISION AND THAT I AM A DULY LICENSED PROFESSIONAL ENGINEER UNDER THE LAWS OF THE STATE OF MINNESOTA.

Joseph D. Pelawa
 JOSEPH D. PELAWA, P.E.
 LIC. NO. 42603 DATE 12/15/2020



4960 MILLER TRUNK HIGHWAY, SUITE 350
 DULUTH, MINNESOTA 55811
 Phone: (218) 729-5939
 Email: BMI@bolton-menk.com
 www.bolton-menk.com

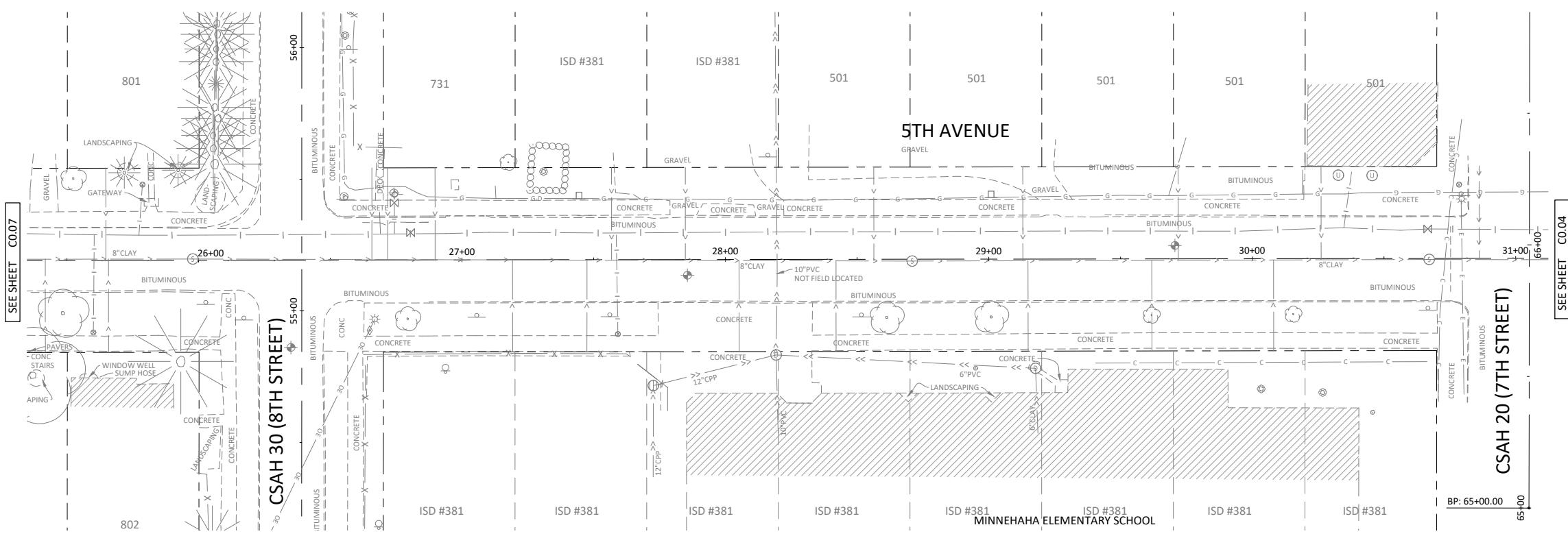


DESIGNED	NO.	ISSUED FOR	DATE
AJN	1	SA SUBMIT	1/13/21
AJN	2	SA SUBMIT	2/1/21
CHECKED	JDP		
CLIENT PROJ. NO.	U17.120606		

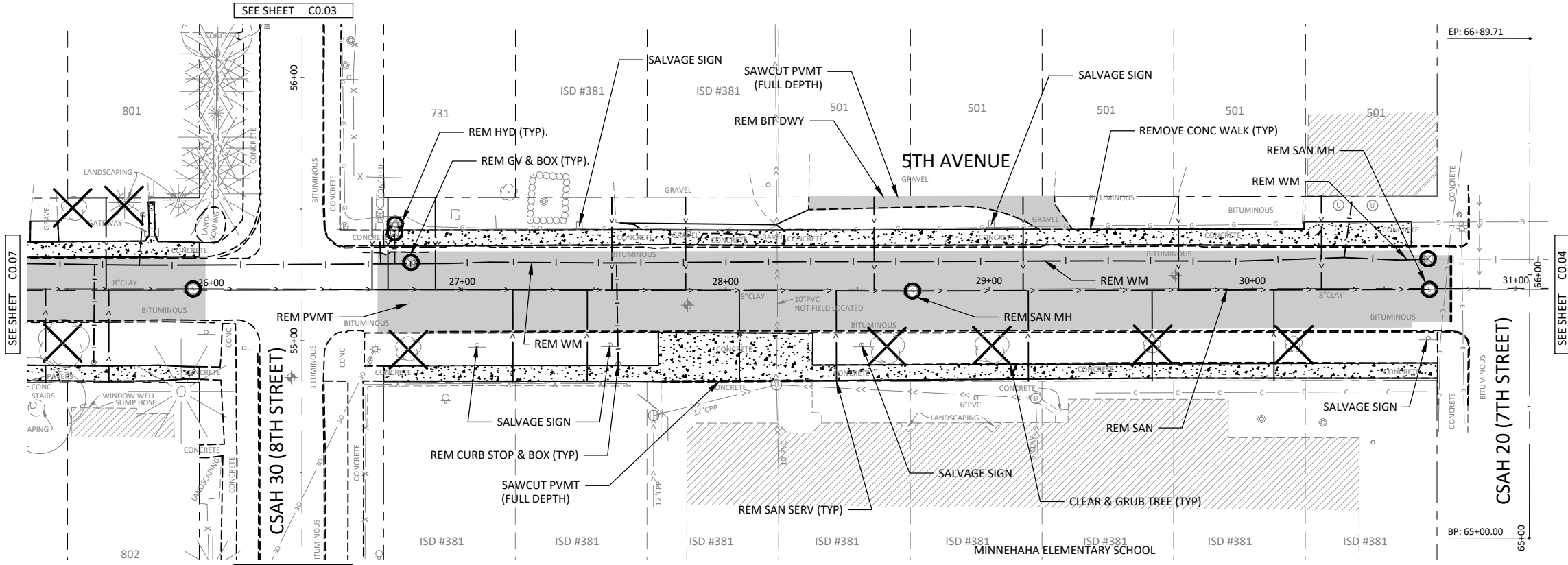
LAKE COUNTY, MINNESOTA
 2021 STREET & UTILITY IMPROVEMENTS
 S.A.P. 038-630-001, S.A.P. 038-635-001, S.A.P. 038-620-010
 EXISTING CONDITIONS & REMOVALS - 4TH AVENUE

SHEET
C0.05

© Bolton & Menk, Inc. 2021. All Rights Reserved. U:\170606\CAD\MINN\B1170\CAD\B1170C05.dwg 1/29/2021 10:20:10 AM



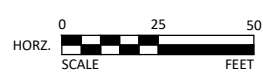
EXISTING CONDITIONS 5TH AVENUE



REMOVALS 5TH AVENUE

- NOTE:
1. REMOVAL OF ACTIVE SANITARY SEWER & WATER SERVICES ARE INCIDENTAL.
 2. REMOVAL OF INACTIVE SANITARY SEWER AND WATER SERVICE PIPES ARE INCIDENTAL.
 3. REMOVE INACTIVE CURB STOPS A MINIMUM OF 2' BELOW FINISH GRADE AS DIRECTED BY THE ENGINEER. (INCIDENTAL)
 4. SCHOOL YARD ACTIVITIES ARE PLANNED DURING CONSTRUCTION. WHERE EXISTING FENCE IS IMPACTED THE CONTRACTOR SHALL PROVIDE TEMPORARY PROTECTION FENCING (INCIDENTAL).

© Bolton & Menk, Inc. 2021. All Rights Reserved. 11/17/2020 10:20:16 AM



I HEREBY CERTIFY THAT THIS PLAN, SPECIFICATION, OR REPORT WAS PREPARED BY ME OR UNDER MY DIRECT SUPERVISION AND THAT I AM A DULY LICENSED PROFESSIONAL ENGINEER UNDER THE LAWS OF THE STATE OF MINNESOTA.

[Signature]
 D. PELAWA, P.E.
 LIC. NO. 42603 DATE 12/15/2020



4960 MILLER TRUNK HIGHWAY, SUITE 350
 DULUTH, MINNESOTA 55811
 Phone: (218) 729-5939
 Email: BMI@bolton-menk.com
 www.bolton-menk.com

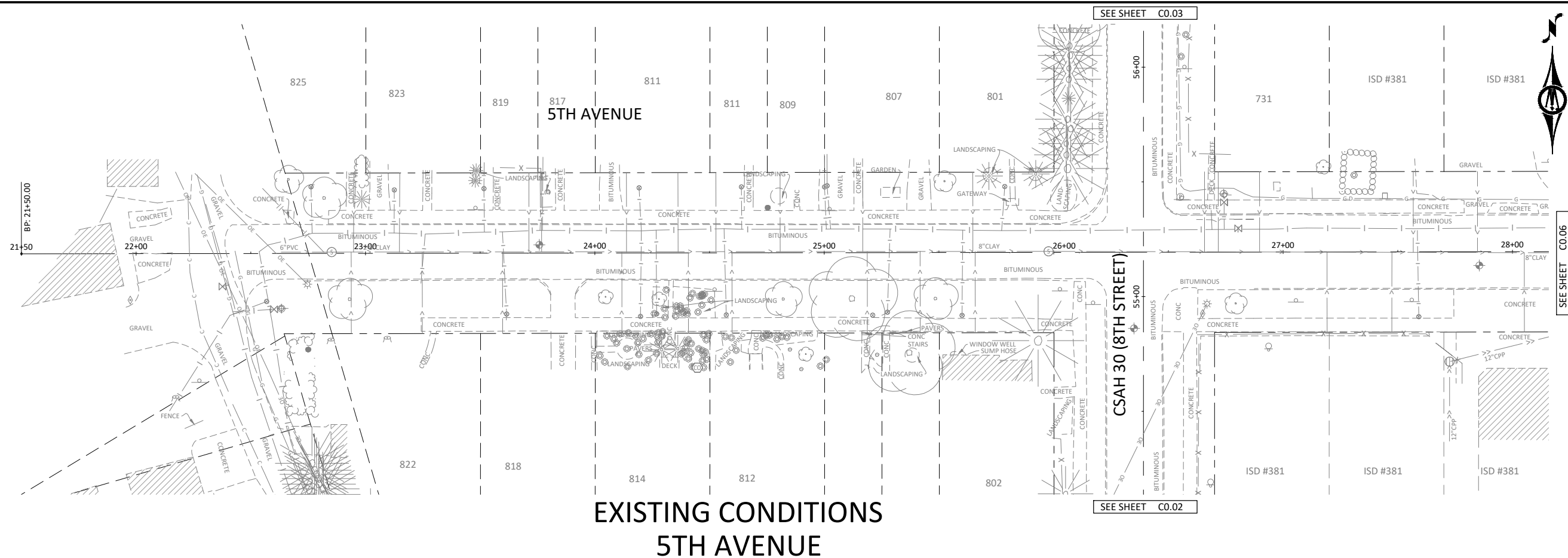


DESIGNED	NO.	ISSUED FOR	DATE
AJN	1	SA SUBMIT	1/13/21
AJN	2	SA SUBMIT	2/1/21
JDP			

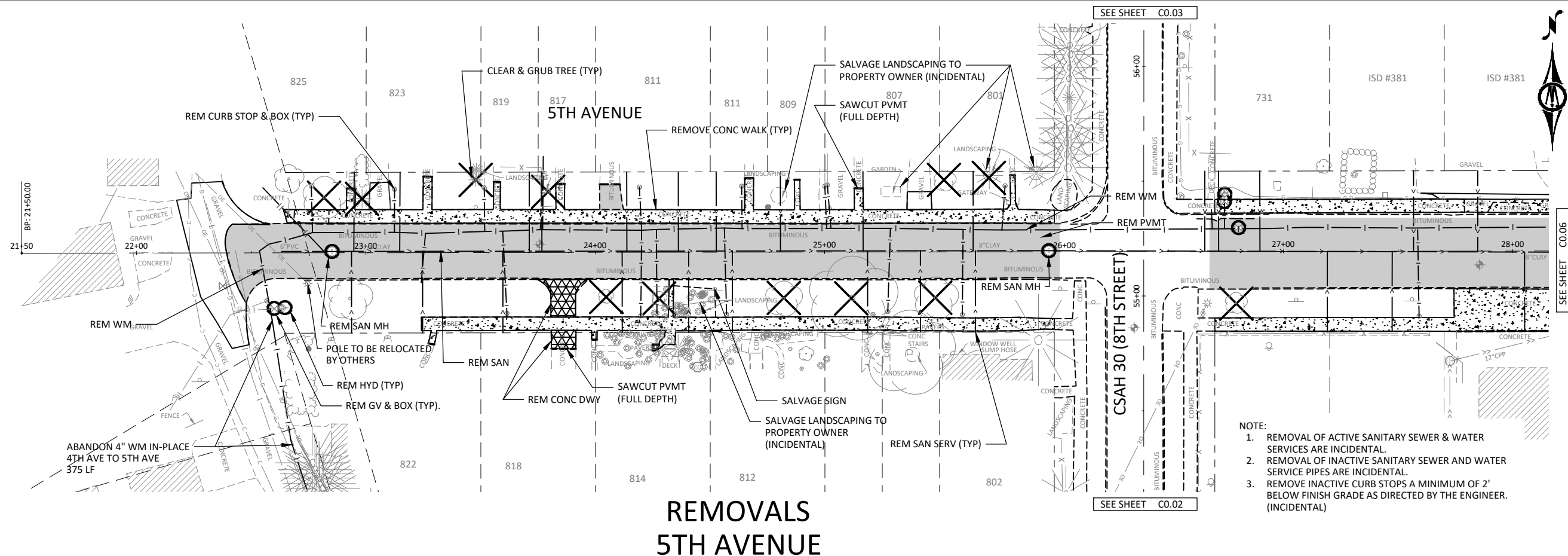
CLIENT PROJ. NO. U17.120606

LAKE COUNTY, MINNESOTA
 2021 STREET & UTILITY IMPROVEMENTS
 S.A.P. 038-630-001, S.A.P. 038-635-001, S.A.P. 038-620-010
 EXISTING CONDITIONS & REMOVALS - 5TH AVENUE

SHEET
C0.06



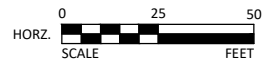
EXISTING CONDITIONS
5TH AVENUE



REMOVALS
5TH AVENUE

- NOTE:
1. REMOVAL OF ACTIVE SANITARY SEWER & WATER SERVICES ARE INCIDENTAL.
 2. REMOVAL OF INACTIVE SANITARY SEWER AND WATER SERVICE PIPES ARE INCIDENTAL.
 3. REMOVE INACTIVE CURB STOPS A MINIMUM OF 2' BELOW FINISH GRADE AS DIRECTED BY THE ENGINEER. (INCIDENTAL)

© Bolton & Menk, Inc. 2021. All Rights Reserved. 11/10/2020 11:29:23 AM



I HEREBY CERTIFY THAT THIS PLAN, SPECIFICATION, OR REPORT WAS PREPARED BY ME OR UNDER MY DIRECT SUPERVISION AND THAT I AM A DULY LICENSED PROFESSIONAL ENGINEER UNDER THE LAWS OF THE STATE OF MINNESOTA.

[Signature]
 J. SCOTT D. PELAWA, P.E.
 LIC. NO. 42603 DATE 12/15/2020



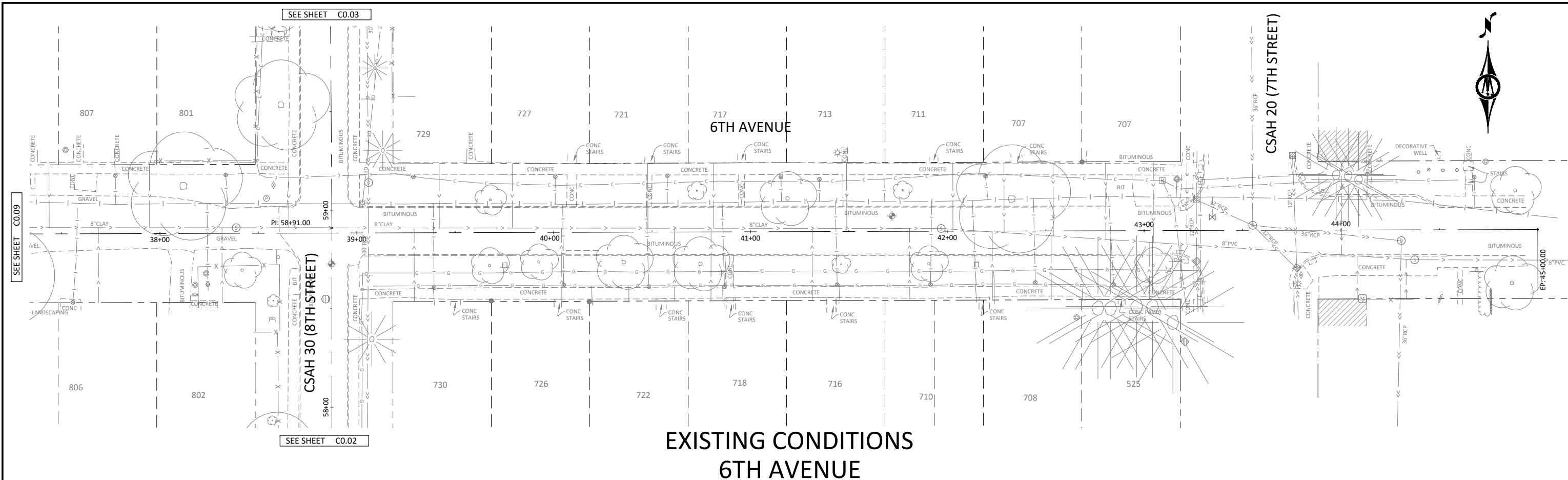
4960 MILLER TRUNK HIGHWAY, SUITE 350
 DULUTH, MINNESOTA 55811
 Phone: (218) 729-5939
 Email: BMI@bolton-menk.com
 www.bolton-menk.com



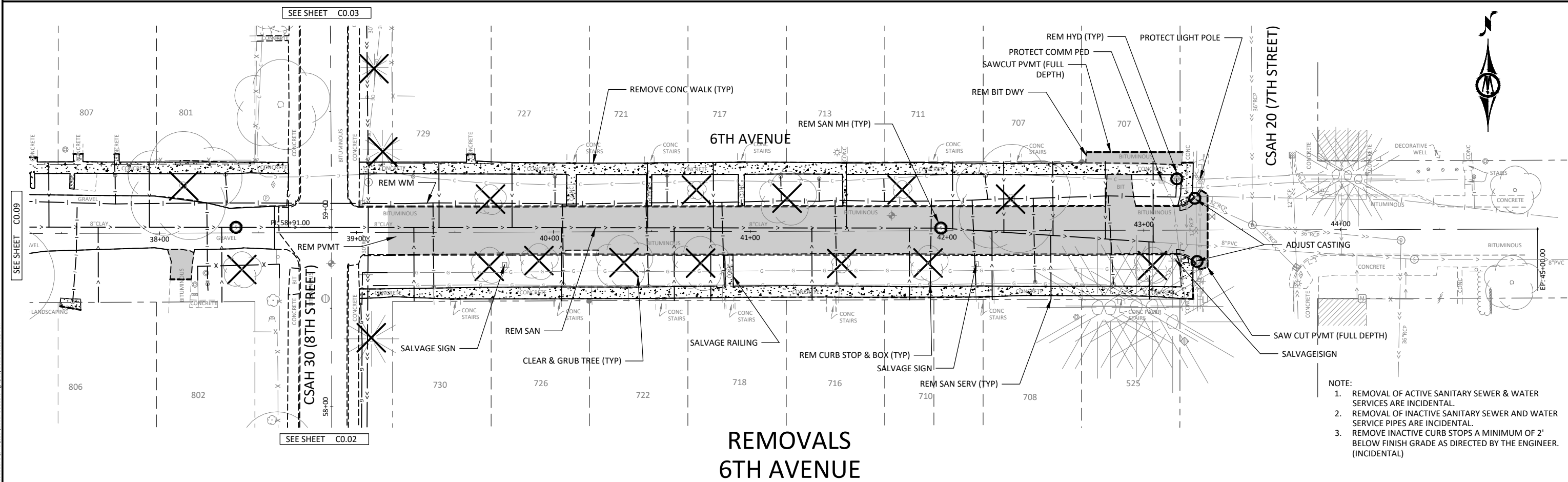
DESIGNED	NO.	ISSUED FOR	DATE
AJN	1	SA SUBMIT	1/13/21
AJN	2	SA SUBMIT	2/1/21
CHECKED	JDP		
CLIENT PROJ. NO.	U17.120606		

LAKE COUNTY, MINNESOTA
 2021 STREET & UTILITY IMPROVEMENTS
 S.A.P. 038-630-001, S.A.P. 038-635-001, S.A.P. 038-620-010
 EXISTING CONDITIONS & REMOVALS - 5TH AVENUE

SHEET
C0.07



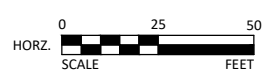
**EXISTING CONDITIONS
6TH AVENUE**



**REMOVALS
6TH AVENUE**

- NOTE:
1. REMOVAL OF ACTIVE SANITARY SEWER & WATER SERVICES ARE INCIDENTAL.
 2. REMOVAL OF INACTIVE SANITARY SEWER AND WATER SERVICE PIPES ARE INCIDENTAL.
 3. REMOVE INACTIVE CURB STOPS A MINIMUM OF 2' BELOW FINISH GRADE AS DIRECTED BY THE ENGINEER. (INCIDENTAL)

© Bolton & Menk, Inc. 2021. All Rights Reserved. 1/29/2021 10:29:29 AM



I HEREBY CERTIFY THAT THIS PLAN, SPECIFICATION, OR REPORT WAS PREPARED BY ME OR UNDER MY DIRECT SUPERVISION AND THAT I AM A DULY LICENSED PROFESSIONAL ENGINEER UNDER THE LAWS OF THE STATE OF MINNESOTA.

[Signature]
 D. PELAWA, P.E.
 LIC. NO. 42603 DATE 12/15/2020



4960 MILLER TRUNK HIGHWAY, SUITE 350
 DULUTH, MINNESOTA 55811
 Phone: (218) 729-5939
 Email: BMI@bolton-menk.com
 www.bolton-menk.com

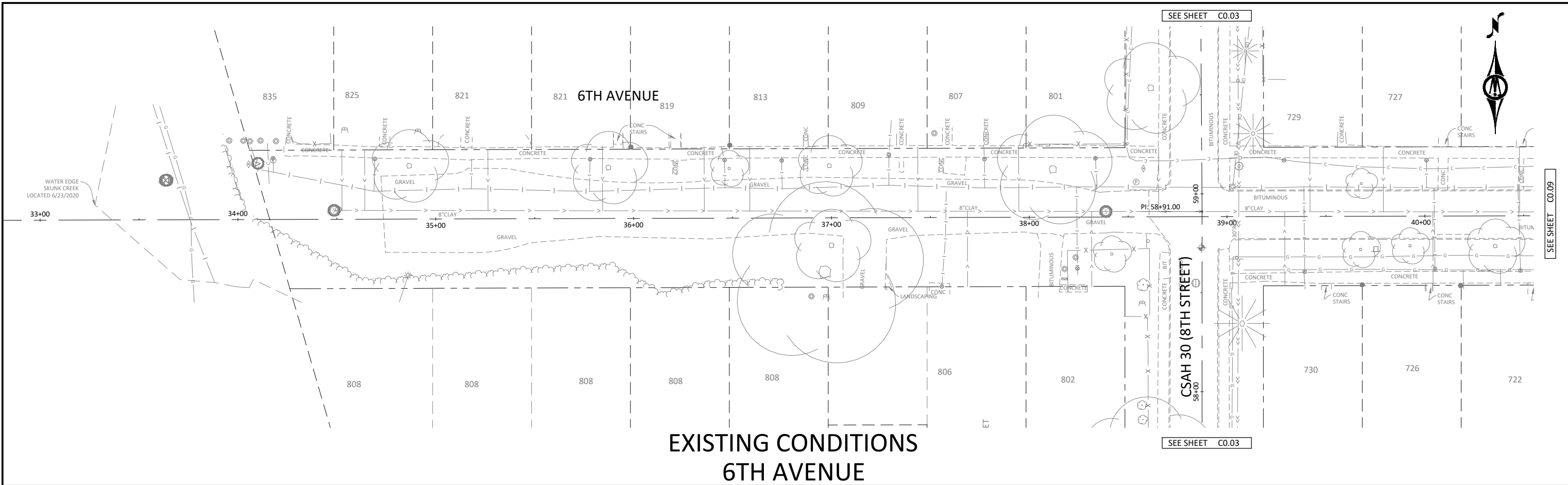


DESIGNED	NO.	ISSUED FOR	DATE
AJN	1	SA SUBMIT	1/13/21
AJN	2	SA SUBMIT	2/1/21
CHECKED	JDP		
CLIENT PROJ. NO.	U17.120606		

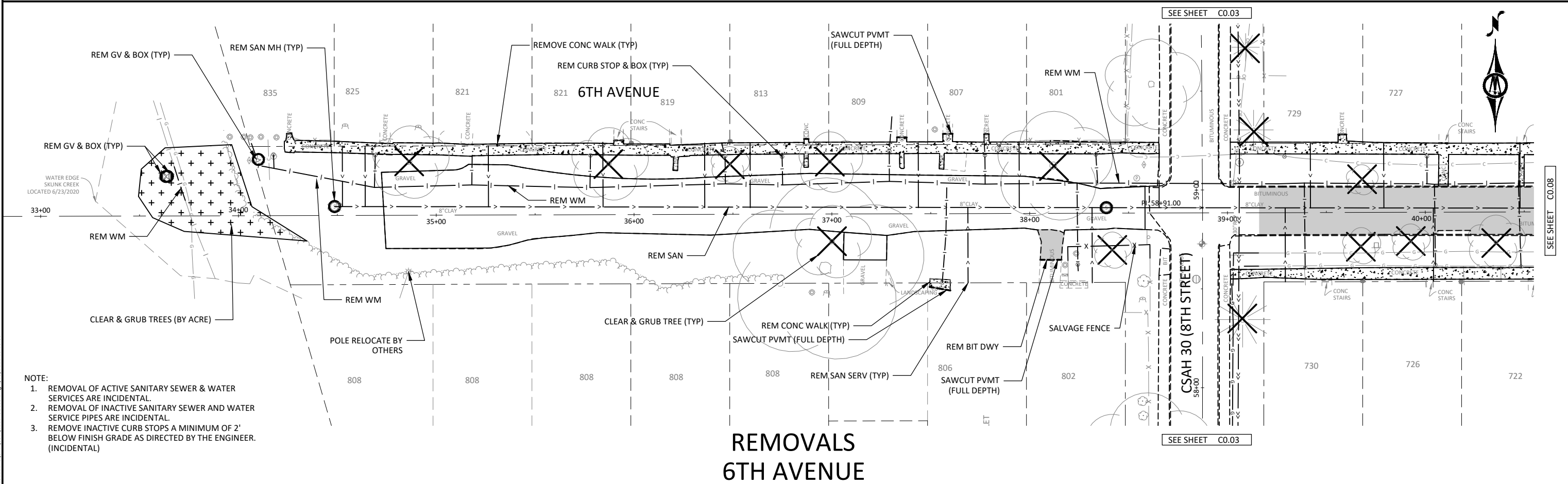
LAKE COUNTY, MINNESOTA
 2021 STREET & UTILITY IMPROVEMENTS
 S.A.P. 038-630-001, S.A.P. 038-635-001, S.A.P. 038-620-010

SHEET
C0.08

EXISTING CONDITIONS & REMOVALS - 6TH AVENUE

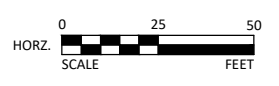


**EXISTING CONDITIONS
6TH AVENUE**



**REMOVALS
6TH AVENUE**

- NOTE:**
1. REMOVAL OF ACTIVE SANITARY SEWER & WATER SERVICES ARE INCIDENTAL.
 2. REMOVAL OF INACTIVE SANITARY SEWER AND WATER SERVICE PIPES ARE INCIDENTAL.
 3. REMOVE INACTIVE CURB STOPS A MINIMUM OF 2' BELOW FINISH GRADE AS DIRECTED BY THE ENGINEER. (INCIDENTAL)



I HEREBY CERTIFY THAT THIS PLAN, SPECIFICATION, OR REPORT WAS PREPARED BY ME OR UNDER MY DIRECT SUPERVISION AND THAT I AM A DULY LICENSED PROFESSIONAL ENGINEER UNDER THE LAWS OF THE STATE OF MINNESOTA.

Joseph D. Pelawa
 JOSEPH D. PELAWA, P.E.
 LIC. NO. 42603 DATE 12/15/2020



4960 MILLER TRUNK HIGHWAY, SUITE 350
 DULUTH, MINNESOTA 55811
 Phone: (218) 729-5939
 Email: BMI@bolton-menk.com
 www.bolton-menk.com



DESIGNED	NO.	ISSUED FOR	DATE
AJN	1	SA SUBMIT	1/13/21
AJN	2	SA SUBMIT	2/1/21
CHECKED	JDP		
CLIENT PROJ. NO.	U17.120606		

LAKE COUNTY, MINNESOTA
 2021 STREET & UTILITY IMPROVEMENTS
 S.A.P. 038-630-001, S.A.P. 038-635-001, S.A.P. 038-620-010
 EXISTING CONDITIONS & REMOVALS - 6TH AVENUE

SHEET
C0.09

© Bolton & Menk, Inc. 2021. All Rights Reserved.
 11/10/2020 11:20:35 AM