

# CSAH 56 AND CSAH 38 IMPROVEMENTS

June 7, 2023

## Project Scope:

- Sanitary sewer improvements
- Water distribution improvements
- Storm sewer improvements
- Street and curb construction
- Driveway and turf restoration
- Private utility relocation

### City of Long Prairie

615 Lake Street South  
 Long Prairie, MN 56347  
 Phone: (320) 732-2167  
 Fax: (320) 732-2847

### Bolton & Menk, Inc.

2040 Highway 12 East  
 Willmar, MN 56201  
 Phone: 320-231-3956  
 Fax: 320-231-9710  
[www.bolton-menk.com](http://www.bolton-menk.com)

Kent Louwagie, P.E.

City Engineer

Cell: 320-905-5446

Email: [Kent.Louwagie@bolton-menk.com](mailto:Kent.Louwagie@bolton-menk.com)

Wayne Duhoux

Construction Representative (RPR)

(onsite full-time)

Cell: (320) 204-9430

Email: [Wayne.Duhoux@bolton-menk.com](mailto:Wayne.Duhoux@bolton-menk.com)

### Contractor

C&L Excavating, Inc.

7939 Ridgewood Rd.

St. Joseph, MN 56374

Scan the QR code to visit the  
 project website!



¡Escanée el código QR para visitar  
 la página web del proyecto!

## Overview

The City of Long Prairie is undertaking a construction project to improve the city streets and utilities. The project includes replacing the sanitary sewer mains and services, replacing the water mains and services, replacing the storm sewer system, and reconstructing the streets. The project area includes the following streets:

### CSAH 38 AREA

- 1<sup>st</sup> Avenue SW, from Lake Street to 1<sup>st</sup> Street SW
- 2<sup>nd</sup> Avenue SW, from Lake Street to city limits
- 3<sup>rd</sup> Avenue SW, from Lake Street to 6<sup>th</sup> Street SW
- 1<sup>st</sup> Street SW, from 3<sup>rd</sup> Avenue SW to 1<sup>st</sup> Avenue SW
- 2<sup>nd</sup> Street SW, from 3<sup>rd</sup> Avenue SW to 1<sup>st</sup> Avenue SW
- 3<sup>rd</sup> Street SW, from 4<sup>th</sup> Avenue SW to 2<sup>nd</sup> Avenue SW
- 4<sup>th</sup> Street SW, from 3<sup>rd</sup> Avenue SW to alley north of 2<sup>nd</sup> Avenue SW
- 5<sup>th</sup> Street SW, from 4<sup>th</sup> Avenue SW to 2<sup>nd</sup> Avenue SW
- 6<sup>th</sup> Street SW, from 4<sup>th</sup> Avenue SW to 2<sup>nd</sup> Avenue SW

### CSAH 56 AREA

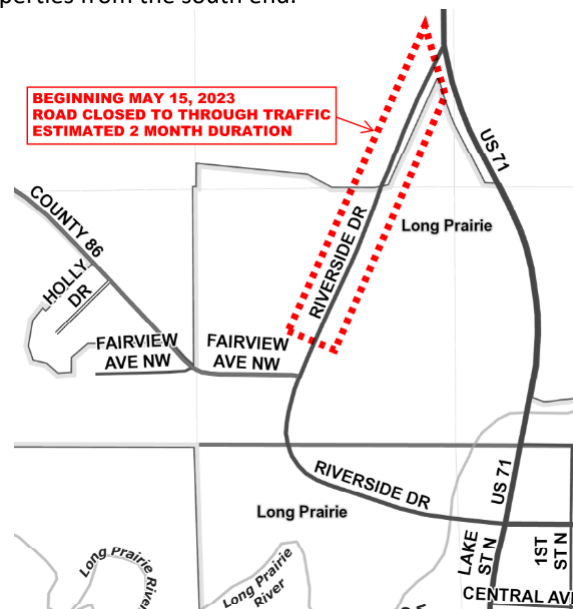
- Riverside Drive from Lake Street N to Highway 71

## Project Schedule

Construction is underway. The anticipated schedules for each project area are:

### CSAH 56 / Riverside Drive Project area

- **The north half of Riverside Drive remains closed to through while underground utility replacement occurs.** The south half of Riverside Drive will remain open. Local access from the north end will occasionally be closed, and all traffic local will need to access their properties from the south end.





## Project Schedule - Continued

### CSAH 56 / Riverside Drive Project area (continued)

- **The north end of Riverside Drive is planned to be closed Saturday June 8<sup>th</sup> to replace two pipes across the road.**
- Dewatering equipment continues to operate.
- Temporary water installation is completed for the current construction area.
- Sanitary sewer replacement on the north half of Riverside Drive is nearing completion. Water system and storm sewer replacement will follow in the coming weeks.
- **The City's contractor will only install new sewer and water service pipes to the property line. Property owners interested in replacing sewer or water service lines all the way to the house must contact a plumber. We recommend scheduling this work as soon as possible, so this can occur while this project is under construction. The dewatering equipment will lower the water table, which will make the job easier. After the dewatering equipment for this project is removed, the water table will return to its normal depth.**

### CSAH 38 Project area

- Underground utility replacement, concrete work, topsoil, grading and seeding are completed.
- The contractor has been watering the seeded areas in an effort to get the turf established.
- Planting boulevard trees is planned later in June.
- The top layer of asphalt pavement will be placed after all other work in the area is completed.
- **Watering new grass:** The City of Long Prairie encourages all residents to have clean and well-maintained yard. This includes watering and upkeep of grass. This is especially important in the areas affected by this project. The seeding in last year's project area has been completed and grass is starting to grow. When it's dry, the City of Long Prairie highly encourages all residents to water their yards during this time. The city pro-rates your sewer bill to allow for additional water to be used during the summer to maintain your yard; the sewer rate in the summer is an average of winter months. The city averages the sewer rate in June, July, August and September since it's assumed that not all the water is going down the drain. **See also the "Turf Restoration" statement on the last page.**

### Commerce Road

- Culverts replacement across Commerce Road and across the intersections at TH 71 is completed.
- The first layer of pavement is completed.
- Some driveway culvert replacement, ditch grading, and constructing the top layer of pavement will occur in the coming weeks.
- Topsoiling and seeding will follow.

### 1<sup>st</sup> Avenue S

- Pavement improvements are planned from TH 71 to 1<sup>st</sup> Street. This will occur at a later date.



## Updates

Everyone is encouraged to subscribe to project updates via email or text by visiting [www.longprairieconstruction.com](http://www.longprairieconstruction.com) This website also has maps, schedules, informational videos, and links to these newsletters. If you have questions or concerns at any time, feel free to contact any of the people listed to the left. Thank you for your understanding and cooperation with this improvement project.



## Wells, Sand Points and Temporary Water System

The dewatering system on Riverside Drive will lower the water table, which could cause wells and sand points to become inoperable. If that happens, the contractor will connect your property to city water. This connection is temporary, and will be removed when construction is completed and the groundwater table has returned to normal. **If you have a well or sand point, and it begins sucking air, call Curt at C&L Excavating: 320-493-0173.**

The Contractor is setting up a temporary water system, which will be the source of city water during the project. The water system is typically connected to your house at an outside faucet. The contractor may need to access your house to complete the installation.



## Sewer and Water Utility Bills

The sewer and water bills for all properties that are connected to temporary water will be based on average past use. Properties that were being billed for sewer only will continue to be billed for sewer only.



## Alert

### Private Utilities

Some power poles, gas mains and communication lines will be relocated during the project. This work is necessary to accommodate the proposed improvements. We understand that this work can be disruptive and ask that you please be patient as the various contractors work to complete their individual portion of the improvements. Some of this work is already underway.

### Disruptions to Sewer and Water Service

Water and sewer service will mostly be provided at all times. However, planned shut-downs and disruptions will occur. For any anticipated longer shutoff periods, residents will be notified. Your residence will be connected to a temporary water supply system until the new piping is installed and tested. This may result in a decrease in water pressure.

### Private Improvements in Right-of-Way

If you have improvements such as landscaping, retaining walls, shrubs, bushes, flowers, sheds, irrigation systems, etc. in the right-of-way, it is not the contractor's responsibility to work around them. The property owner is responsible for securing these private improvements and moving them if necessary to allow the project to be constructed. Neither the contractor nor City is responsible for damages incurred to private improvements in the right-of-way. Any underground improvements, such as irrigation lines and sprinkler heads, dog fences, etc., should be located and marked so they are readily visible.



## Access

While certain construction operations are underway, you will not be able to access your driveway with your vehicle. You will be notified in advance when this will occur. When you are notified, please remove your vehicle from your driveway and park it on a nearby street outside of the construction zone. Access to your property will be restored as soon as possible.

In the interest of safety, streets in the reconstruction areas will be closed to non-local traffic during construction. Residents who have access to their home from side streets or alleys should use alternate routes.



## Construction

### General

The order of work on a street will typically be:

1. Temporary water service will be connected to your house, typically at an outside faucet. In some cases, the contractor may need access to your house.
2. The paved street surface will be removed. Some material may be left in place as a temporary driving surface.
3. The new sanitary sewer mains and water mains will be installed
4. New sewer and water services will be installed
5. Storm sewer will be installed
6. The road will be excavated and reconstructed to a gravel surface
7. Concrete curbs and driveways will be constructed
8. The bottom layer of bituminous pavement will be constructed (the top layer will be constructed next year)
9. Topsoil and seeding

## Work Area

It is very common on these types of projects that area residents (especially children) become quite curious about the work the Contractor is performing. We ask that you please be respectful of and stay well clear of construction zones. Many hazards and dangers exist from heavy machinery, trenches, loose material, confined spaces, hot asphalt, etc. and often times are not recognizable by the general public. The Contractor has responsibility to ensure safety on the project and within the construction area. Any direction from the Contractor regarding safety must be heeded; likewise if you observe an unsafe condition please report it to the RPR immediately.

## Private Work – Concrete and Asphalt

If you are interested in having additional concrete work or asphalt paving work completed on your private property, outside of the project limits, please coordinate this work and arrange payment directly with the contractor.

- For concrete, contact Ryan at Weststar Concrete, 320-980-0539.
- For asphalt paving, contact Craig at Ferguson Brothers, 320-304-9054.

## Driveways

Avoid excessive turning movements and parking heavy vehicles or trailers on new asphalt driveways for up to a week to ensure a satisfactory non-scuff surface. New concrete driveways are sprayed with a white curing compound. This keeps the moisture content high in the concrete to provide for better curing and strength. Do not seal a new concrete driveway for at least 3 months.

## Turf Restoration

Turf will be restored following underground construction and surface grading. A method called “hydro-seeding” will be used. The newly seeded areas will be maintained by the contractor until the turf is established. After that period, it becomes the property owner’s responsibility to maintain the new turf as part of their lawn – providing water, mowing and other necessary care. Mowing too soon or too short can damage or even kill new turf. Set the mower at its highest level; never cut the new turf shorter than 3”.

## Punch List

After the project is substantially complete, the contractor will be provided with a “punch list” of minor defects or uncompleted tasks. That work may take several weeks to complete and may even occur in the following spring prior to paving the final lift of asphalt. This punch list work will require both your cooperation and patience. Please contact the RPR for any issues you feel have not been satisfactorily addressed.