



Belgrade Avenue - Corridor Study



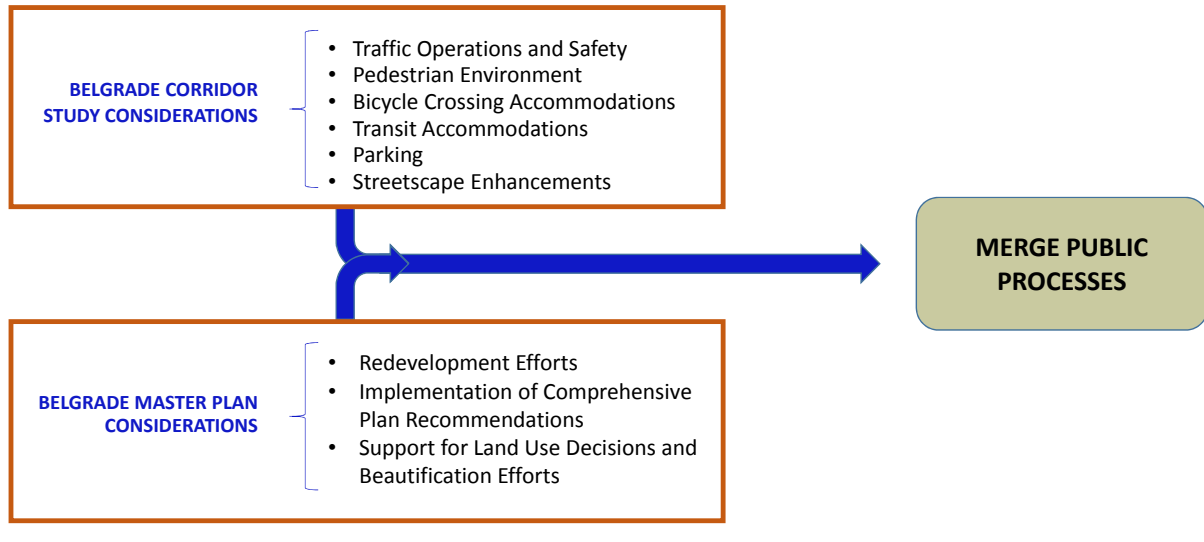
City Council Update
January 3, 2017
7:00 PM

Study Purpose

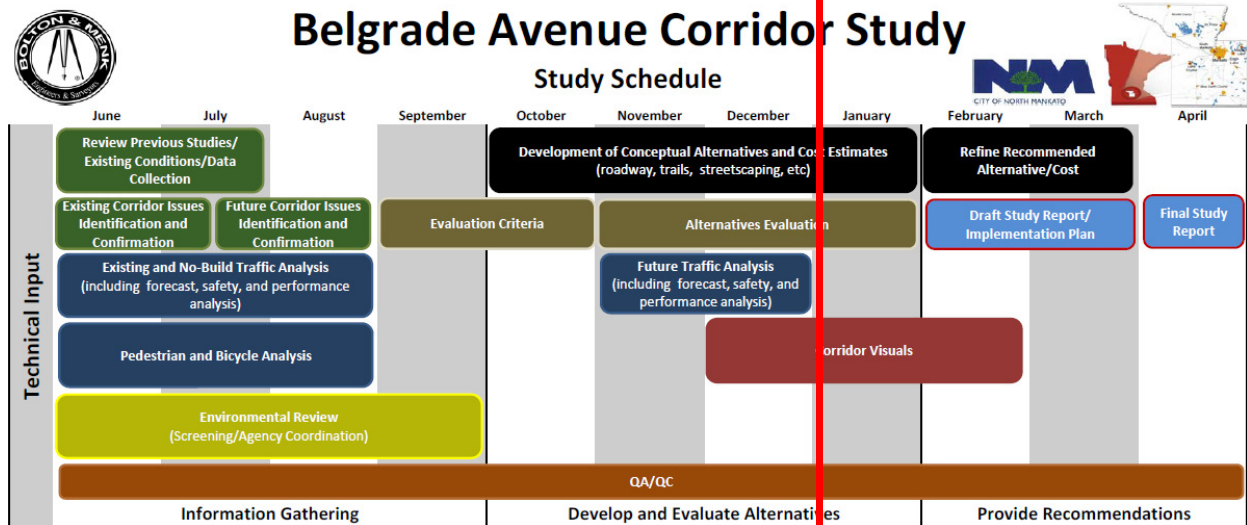
Identify future transportation improvements that increase roadway function and safety for all modes of traffic on Belgrade Avenue.



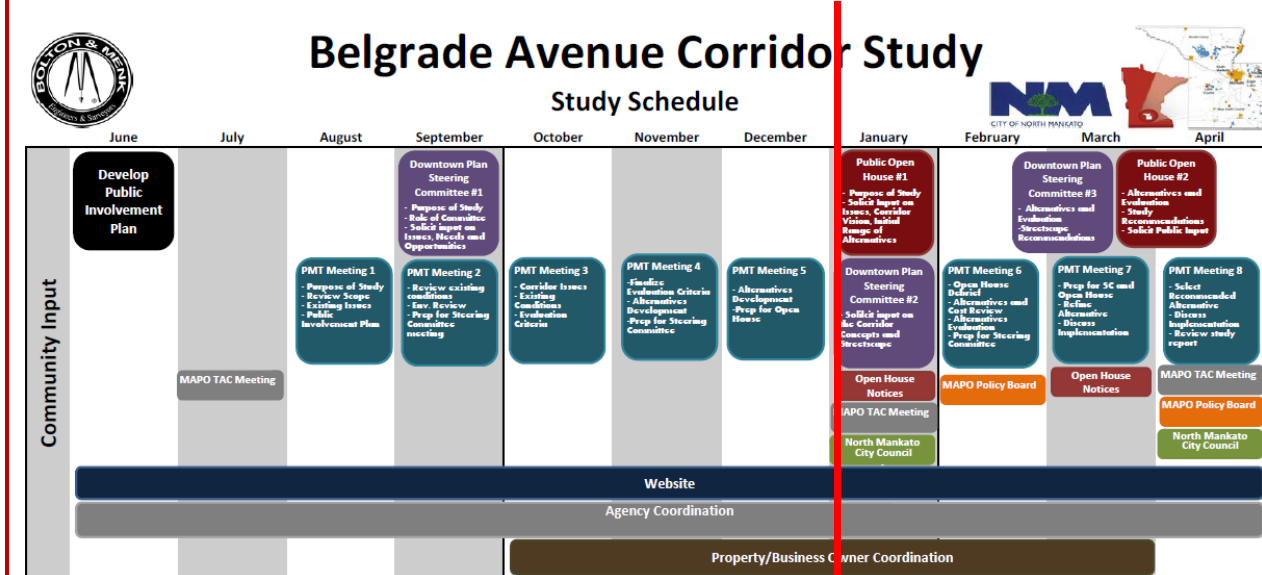
Relationship to Belgrade Master Plan



Study Process



Public Involvement



Public Comment

Public Comment Web App:

- Interactive public web interface
- Allows public to identify areas where they have experienced issues and leave comments

The screenshot shows the MAPO Belgrade Avenue - Corridor Study Public Comment web application. It features a map of the Belgrade area with a public comment form overlaid. The form includes a dropdown menu for "Problem Areas" and a text input field for "Comments". A map window shows a specific location with a comment: "Problem Areas: Traffic entering and exiting Belgrade is problematic. Comments: Cars at the four way stop sign on Belgrade either don't stop or to completely stop." The interface also includes contact information for MAPO staff and navigation links.

Corridor Needs/Considerations

ACCESS CONSIDERATIONS

Many closely spaced accesses in 200 Block

Concerns with:

- American Legion driveway (close to Range St)
- Circle Inn driveway (sight distance and close to Wall St)



PARKING INVENTORY

Blue = Public parking
Yellow = Private parking

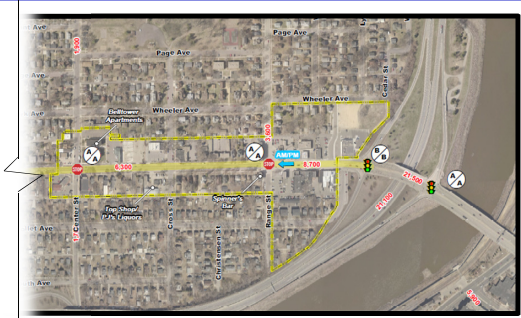
16 On-Street Stalls – 200 Block



Corridor Needs/Considerations

TRAFFIC OPERATIONS

- Traffic volumes:
 - 8,700 today
 - 9,900 by 2041
- Delay at Lee Blvd
- Back-ups at Range St

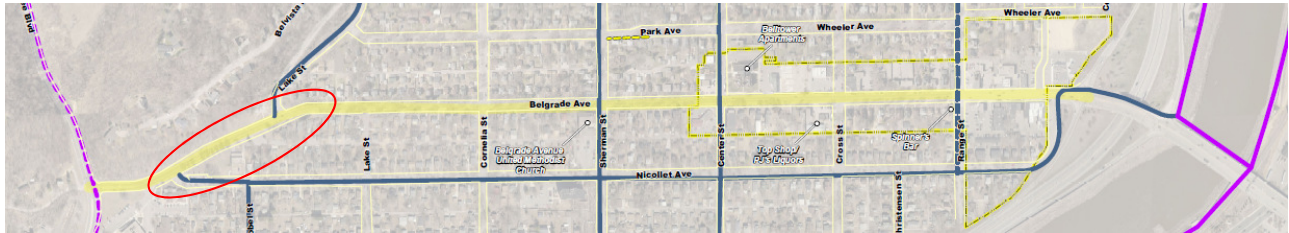


SAFETY - CRASH HISTORY



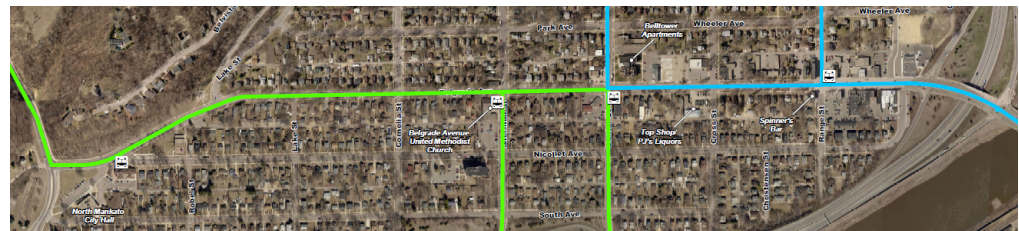
Corridor Needs/Considerations

PEDESTRIAN/BICYCLE TRAFFIC



TRANSIT

- Bus stops on side streets
- 2017 Transit Development Plan



Study Goals

- Balance vehicle **mobility** and property **access**
- **Safely** accommodate all users
- Support an inviting and safe **pedestrian** environment
- Support **bicycle connections** across Belgrade Avenue
- Support **future land use** and **redevelopment** plans
- Provide infrastructure improvements compatible with **environment**
- Enhance **community character** and the **downtown environment**

Concept Development

Lee Boulevard to Lake Street



Concept Development

Intersection Bump-Outs

- Cornelia St
- Sherman St
- Center St
- Cross St



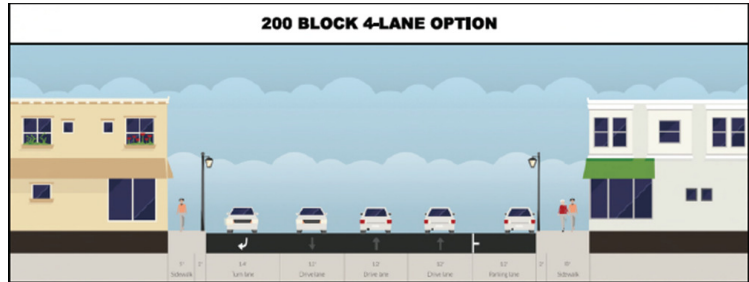
Concept Development

200 BLOCK 4-LANE OPTION



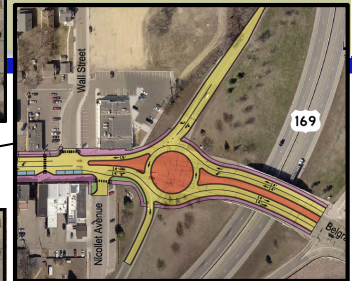
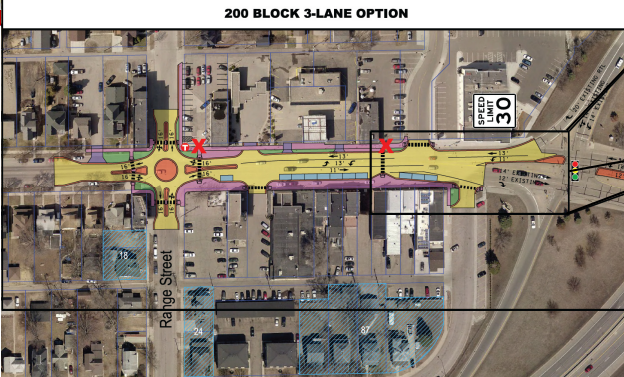
**200 BLOCK
CONCEPTS:
4-Lane Option**

200 BLOCK 4-LANE OPTION



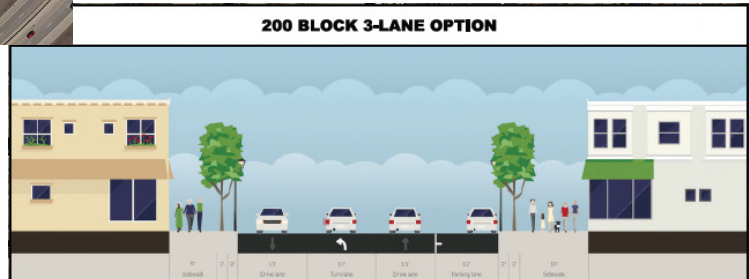
Concept Development

200 BLOCK 3-LANE OPTION



**200 BLOCK
CONCEPTS:
3-Lane Option**

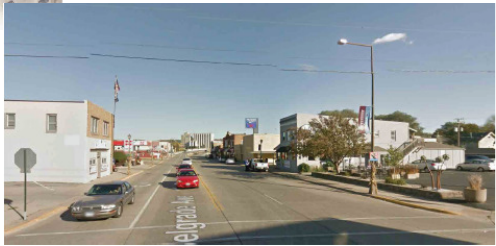
200 BLOCK 3-LANE OPTION



Belgrade - Existing Conditions



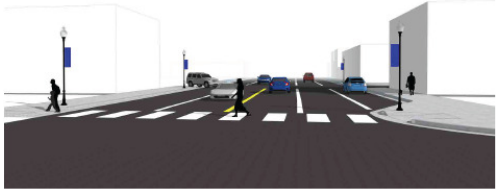
Streetscape Opportunities



Belgrade - 4 Lane w/Bump-Outs



Streetscape Opportunities



Belgrade - 3 Lane w/EB Parking



Streetscape Opportunities



Next Steps

- Evaluate & Refine Alternatives
- Implementation Plan
- Next Council Update – March/April 2017

IMPORTANT DATES

January 19th
Steering Committee Meeting

January 26th & 28th
Public Open Houses