

# Corridor Goals

- Provide efficient vehicle and freight **mobility** and **access**
- **Safely** accommodate all users
- Support an inviting and safe **pedestrian** environment
- Support **bicycle connections** across Riverfront Drive
- Support **future land use** and **redevelopment** plans
- Provide improvements **compatible** with the historic and natural environment
- Enhance **community identity**

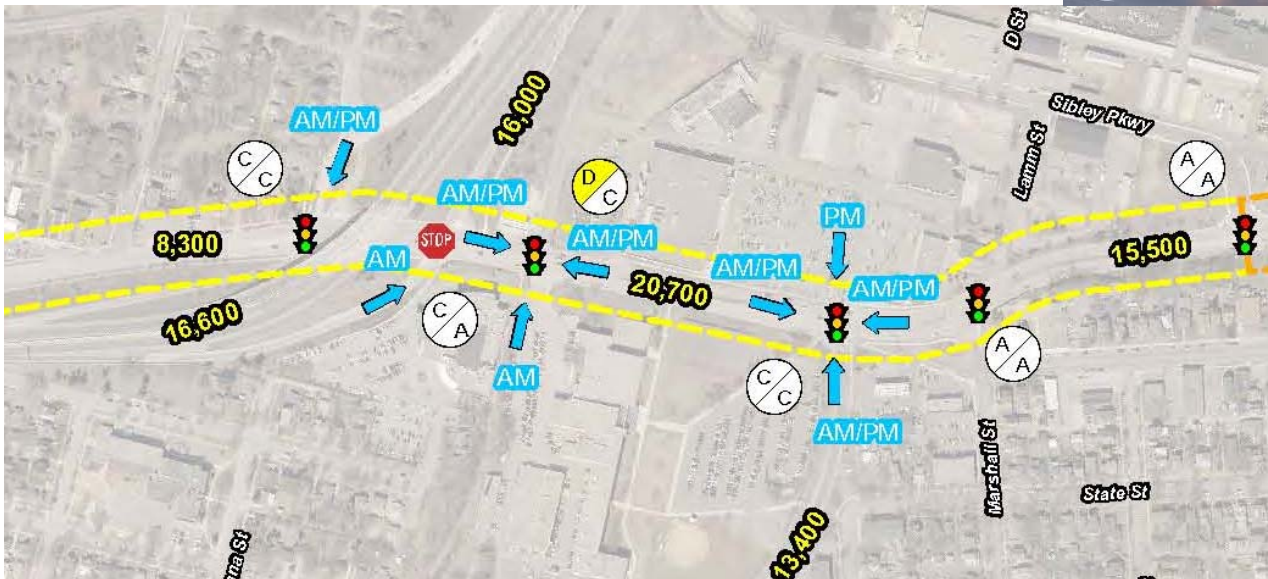


# Segment 1 Issues

(Woodland Avenue to Sibley Parkway)

## Issues in this Segment

- Many accesses closely spaced
- Peak hour delays
- Crash issue at Stoltzman
- High demand for pedestrian crossings



# Segment 1 Recommendations

(Woodland Avenue to Sibley Parkway)

## Short-Term:

- Option 1A – See Layout
- Option 1B – See Layout
- New Public Street through Cub Foods area



## Opportunity/Development/Safety Driven:

- Continue New Public Street from Linder Ave to Sibley Parkway
- Grade Separated Trail over Riverfront Drive
- Roundabout Corridor OR
- Interchange Modifications

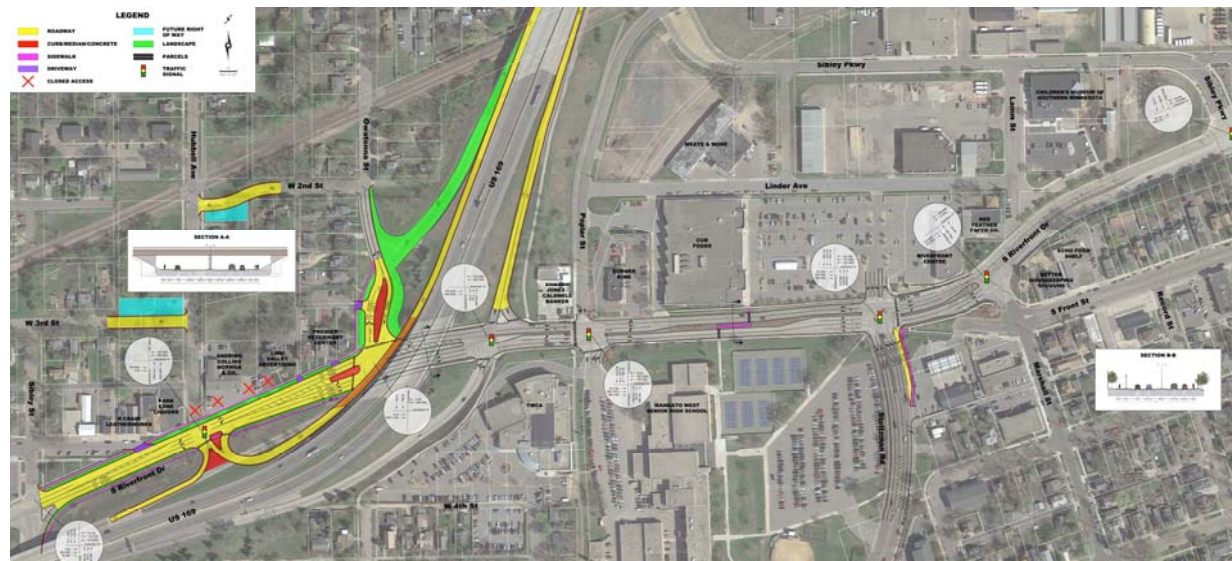
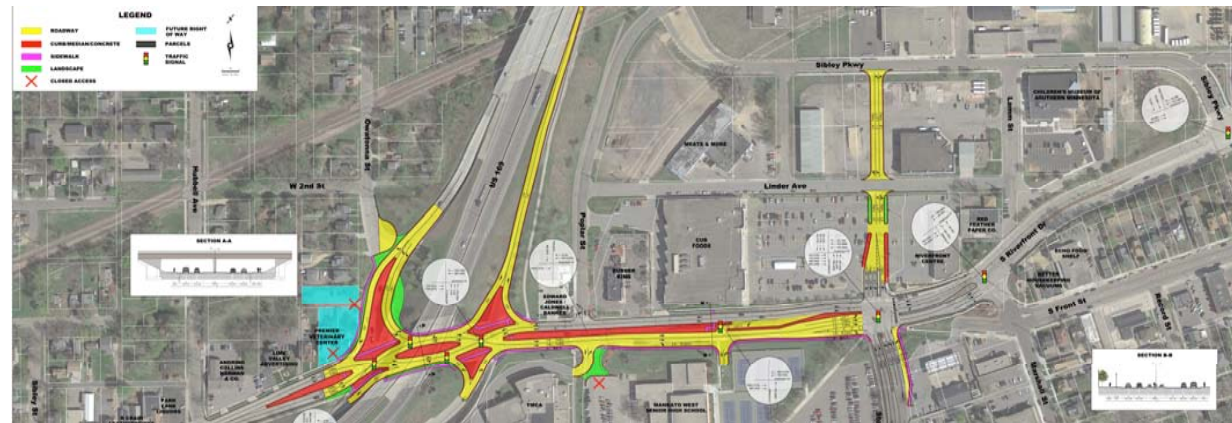


# Segment 1 – Opportunity/Development/Safety Driven

(Interchange Modification Options)

**\*Note:**

For long-term, future consideration if opportunities such as land use changes arise in support of a major project.



# Segment 2 Issues

(Sibley Parkway to Veteran's Memorial Bridge)

## Issues:

- No sidewalk on east side - Civic Center Plaza to Cherry St
- High pedestrian crossing demand
- Cherry Street signal operations



# Segment 2 Recommendations

(Sibley Parkway to Veteran's Memorial Bridge)

## Short-Term:

- Cherry St and Warren St Intersections Improvements:
  - Lane alignment modifications
  - Install protected lefts on Warren St/Poplar St
  - Install protected lefts on Southbound Riverfront Dr at Cherry St
- Test a 3-Lane

## Mid-Term:

- Add sidewalk with either:
  - 4-lane OR
  - 3-lane



Source: Google Maps

Alexandria Example:  
Testing an Improvement prior to  
construction



Source: City of Alexandria and WSN

# Segment 3 Recommendations

(Old Town)

## Short-Term:

- Add Wayfinding for Parking and Public Spaces
- Test a 3-Lane



Source: [www.speakupaustin.org](http://www.speakupaustin.org)

Alexandria Example:  
Testing an Improvement prior to  
construction



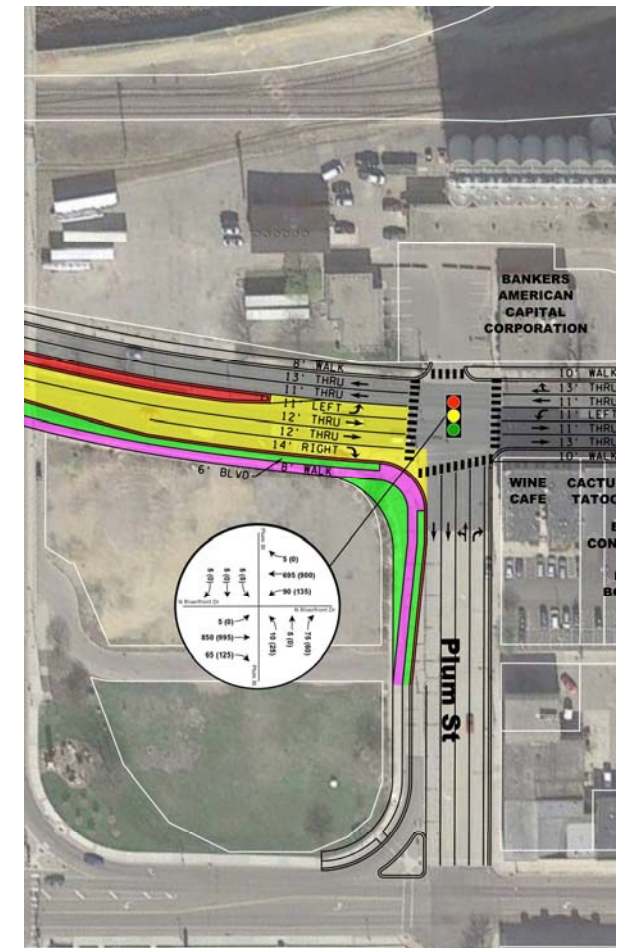
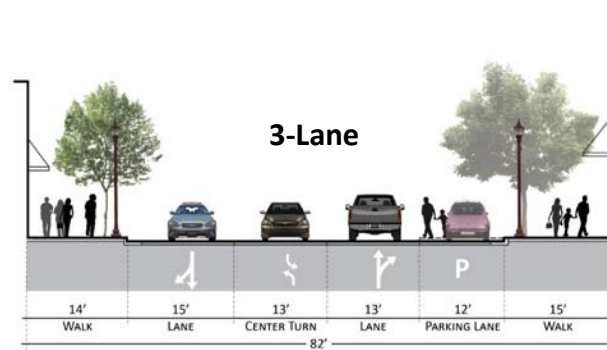
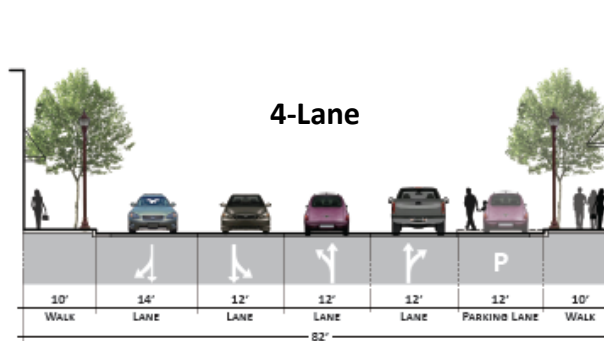


# Segment 3 Recommendations

(Old Town)

## Mid-Term:

- Remove Free Right at Plum St
- Traffic Signal at Rock or Elm St
- Add Pedestrian Flasher
- 3-Lane or 4-Lane



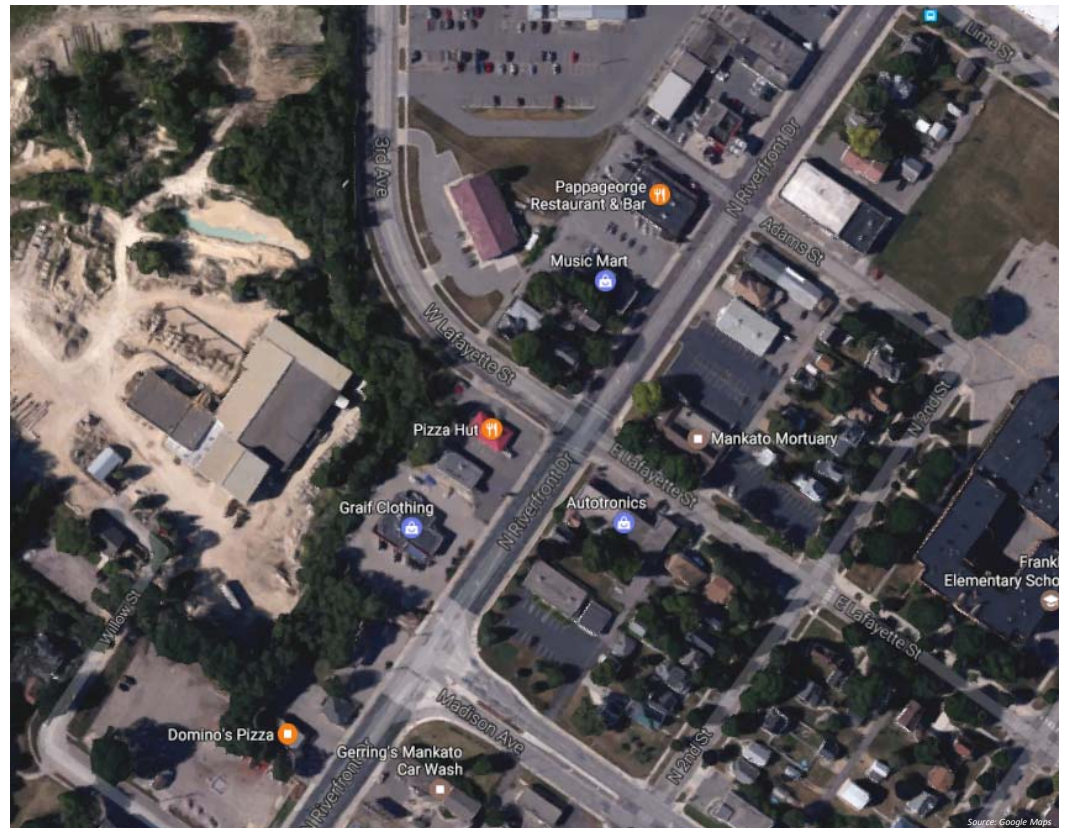
Source: FHWA, Michael Frederick, City of St. Petersburg, FL

# Segment 4 Issues

(Madison Ave to Good Counsel Drive)

## Issues :

- Spacing of Madison Ave & 3<sup>rd</sup> Ave
  - Operational Issues
  - Crash issue at 3<sup>rd</sup> Ave
- North of 3<sup>rd</sup> Ave:
  - Excessive speeds
  - Offset/Overlapping Accesses
  - No crash or operations issues today
  - Pedestrian crossings

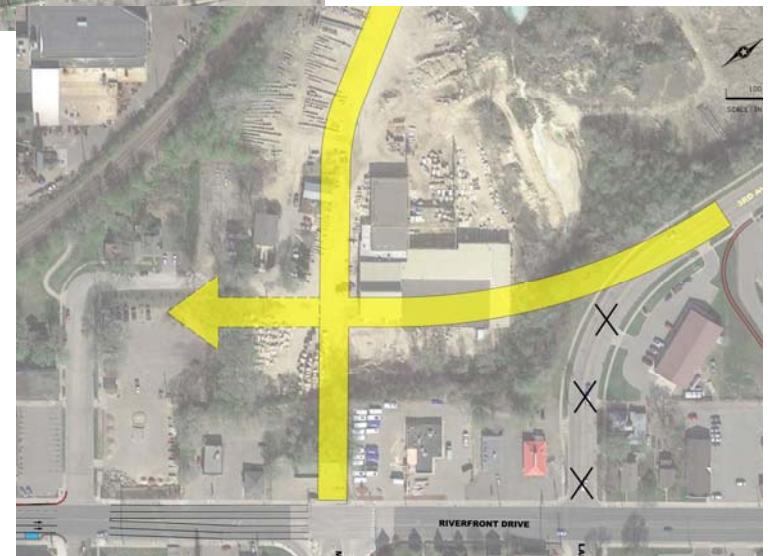


# Segment 4 Recommendations

(Madison Ave to Good Counsel Drive)

## Opportunity/Development/ Safety Driven:

- Explore 3<sup>rd</sup> Ave realignment options with a redevelopment opportunity
- Median at Adams St with trail extension for SRTS

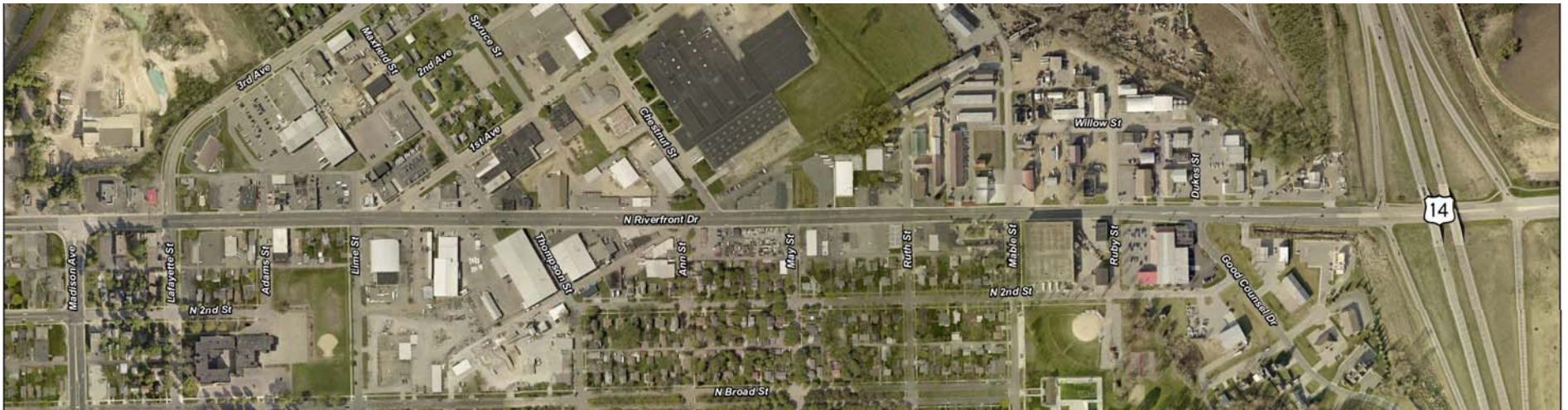


# Segment 4 Recommendations

(Madison Ave to Good Counsel Drive)

## Opportunity/Development/Safety Driven:

- When reconstruction occurs or opportunities arise, reevaluate:
  - Width of road and number of lanes – fewer lanes possible
  - Access modifications – realign, share, and/or use side streets
  - Primary intersection locations – consistent spacing for best operations



# Segment 5 Issues

(Highway 14)

## Issues:

- Delays & back-ups on westbound off-ramp
- Pedestrian crossing concern – to access trail



Source: Google Maps

# Segment 5 Recommendation

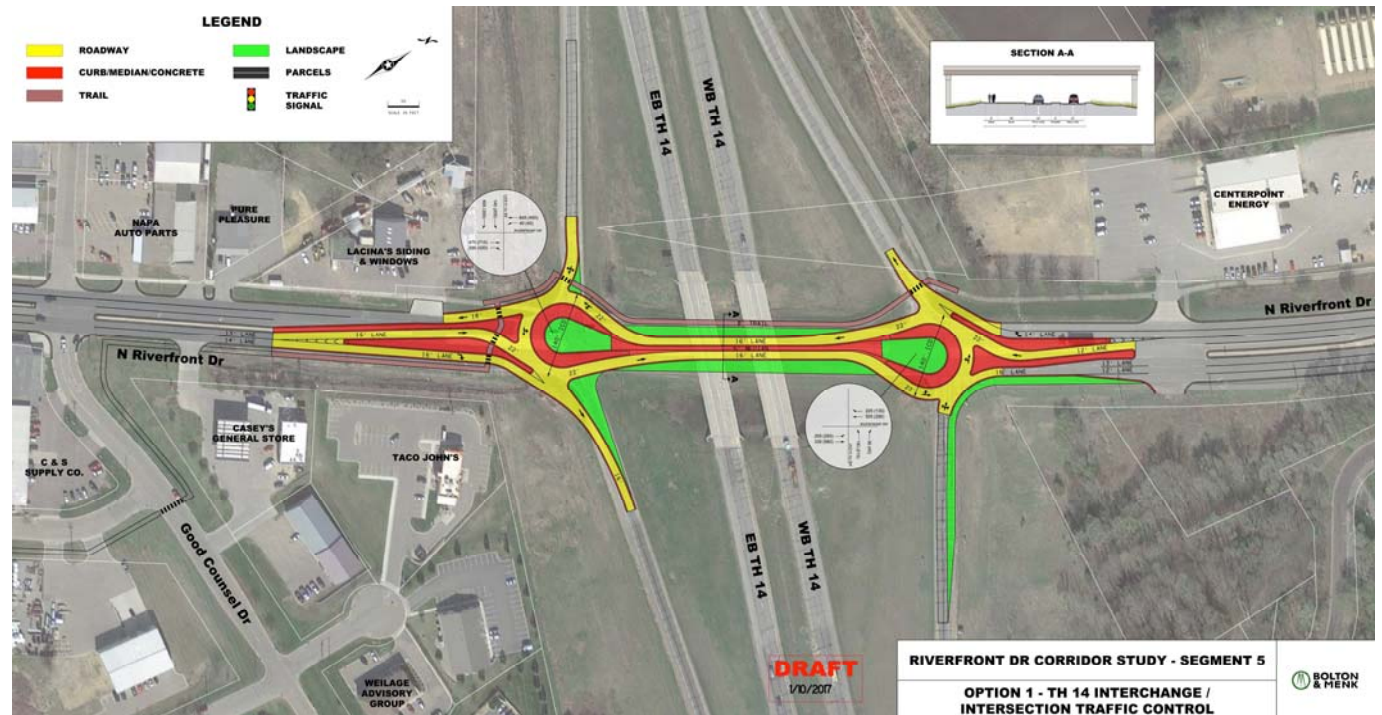
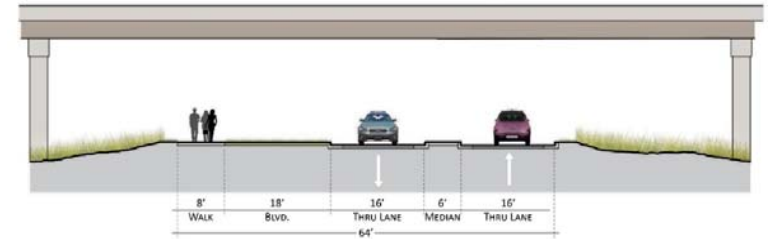
(Highway 14)

## Short-Term:

- Roundabout at North Ramp
- Trail extension and crossing to Minnesota River Trail

## Operational/Safety Driven:

- Roundabout at South Ramp



RIVERFRONT DR CORRIDOR STUDY - SEGMENT 5

OPTION 1 - TH 14 INTERCHANGE / INTERSECTION TRAFFIC CONTROL

BOLTON & MENK