



Riverfront Drive - Corridor Study



Public Information Meeting

October 18, 2016

5:30 – 7:30 PM

Presentation at 6 pm

Agenda

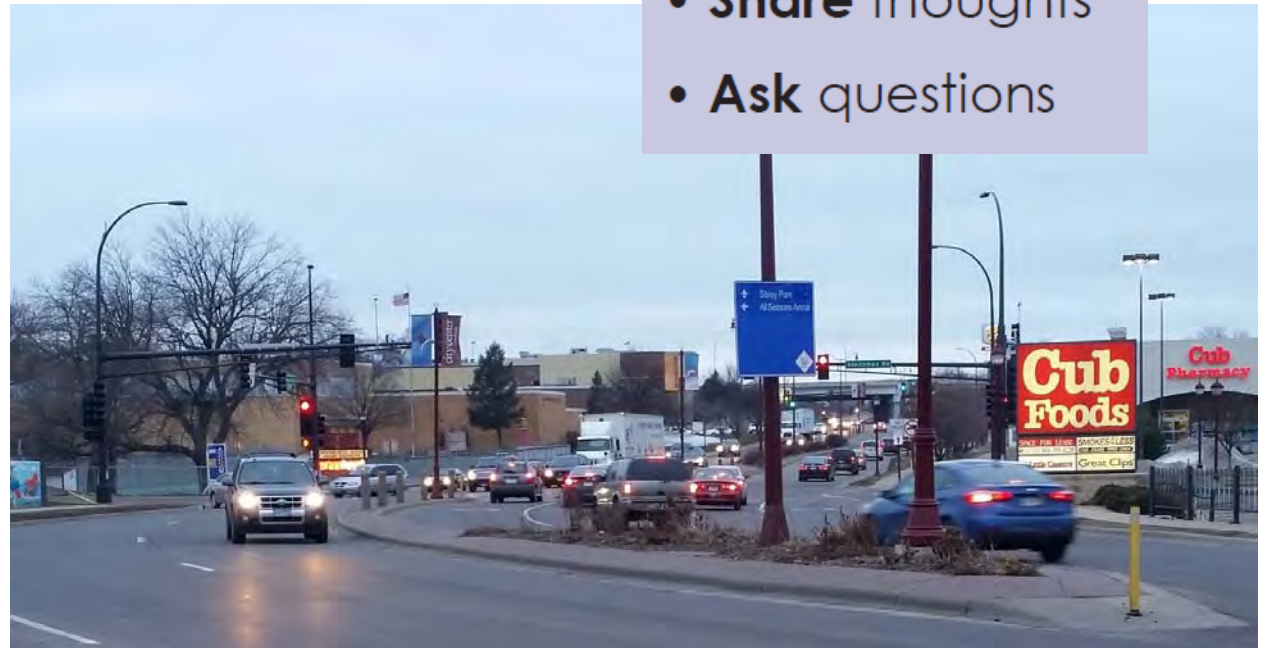
Open House – 5:30 to 7:30 pm

- Talk to project staff

Presentation – 6:00 pm

- Purpose of Study
- Existing Conditions
- Corridor Goals
- Next Steps
- Provide Your Input

- **Hear** details
- **Share** thoughts
- **Ask** questions



Purpose of Study

To define a comprehensive vision for Riverfront Drive to continue reinvestment while serving continued growth and local/regional mobility needs over the next 25 years.



Existing Conditions Review

- Land Use/Major Traffic Generators
- Traffic Operations and Speeds
- Crash History
- Pedestrian and Bicycle
- Provide your input!

- Segment 4:**
Madison Avenue to Highway 14
- Segment 3:**
Veteran's Memorial Bridge to
Madison Avenue
- Segment 2:**
Sibley Parkway to Veteran's Memorial
Bridge
- Segment 1:**
Woodland Avenue to Sibley Parkway



Existing Conditions – Segment 1

(Woodland Avenue to Sibley Parkway)

Land Use/Major Traffic Generators

- Highway 169/60 Access
- CHS Oilseed Processing
- Roosevelt Elementary School
- YMCA
- Mankato West High School
- Cub Foods retail complex
- Other commercial and residential



Existing Conditions – Segment 1

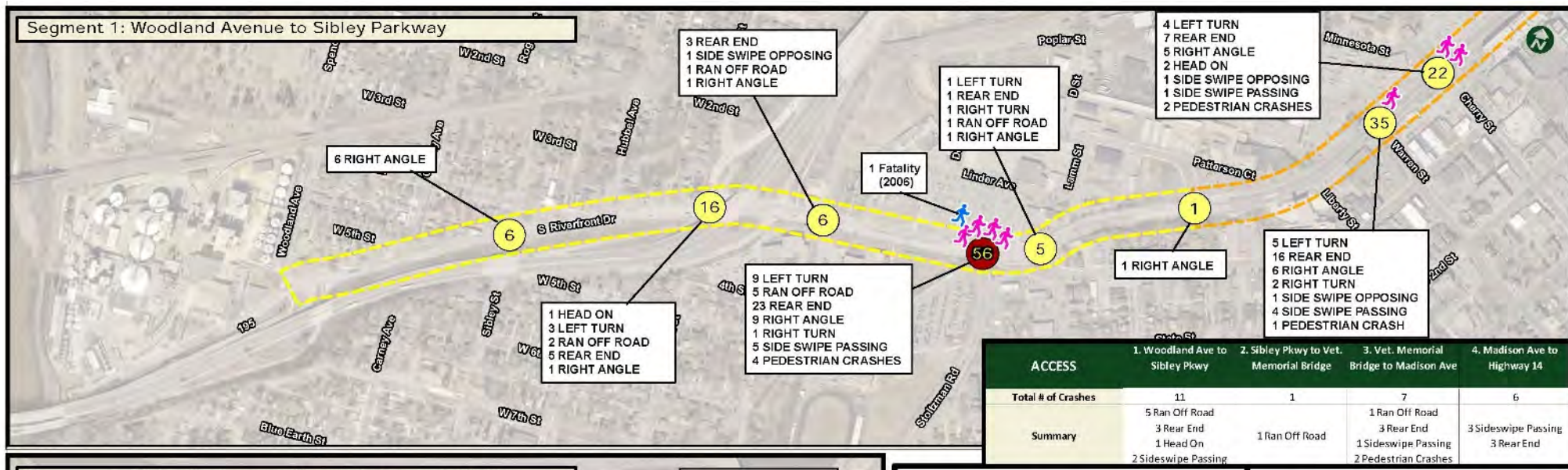
(Woodland Avenue to Sibley Parkway)

Traffic Operations and Speeds



Existing Conditions – Segment 1 (Woodland Avenue to Sibley Parkway)

Crash History



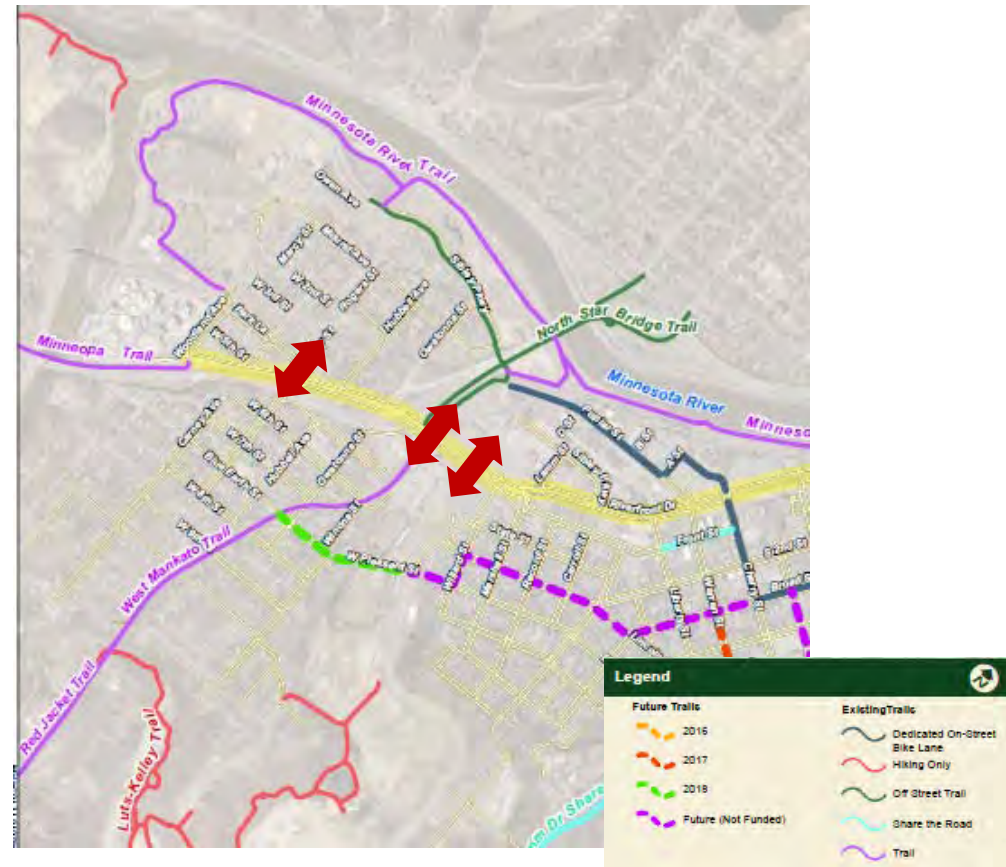
Existing Conditions – Segment 1

(Woodland Avenue to Sibley Parkway)

Pedestrian and Bicycle

High demand crossings:

- Sibley Street
- Poplar Street
- Between West HS and Cub Foods



Existing Conditions – Segment 1

(Woodland Avenue to Sibley Parkway)

2017 Safe Routes to School Project



Provide Your Input

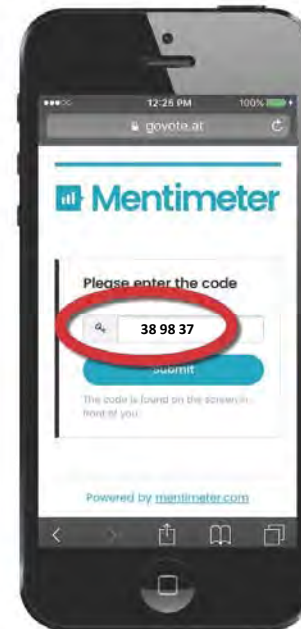
What is your primary transportation concern with **SEGMENT 1** on Riverfront Drive?

Go to:

www.govote.at

Enter Code:

38 98 37



What is your primary transportation concern with Segment 1 on Riverfront Drive?



Existing Conditions – Segment 2

(Sibley Parkway to Veteran's Memorial Bridge)

Land Use/Major Traffic Generators

- Commercial retail and office area
- Front Street District
- Hy-Vee
- Civic Center
- Hotels
- Intergovernmental Center
- Library



Existing Conditions – Segment 2

(Sibley Parkway to Veteran's Memorial Bridge)

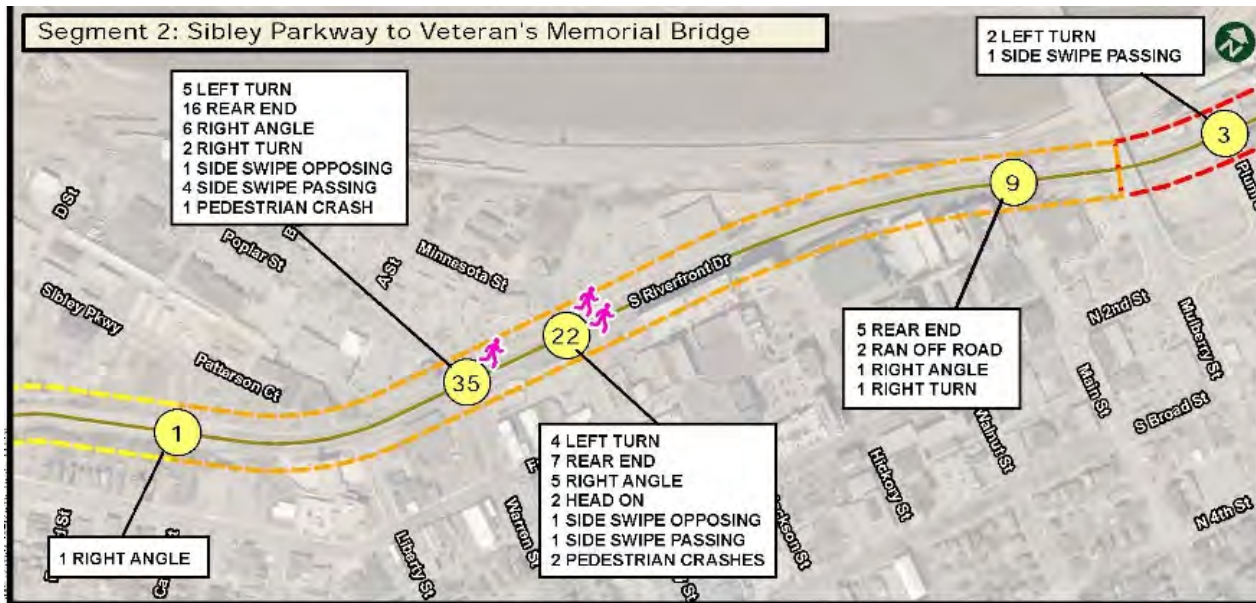
Traffic Operations and Speeds



Existing Conditions – Segment 2

(Sibley Parkway to Veteran's Memorial Bridge)

Crash History



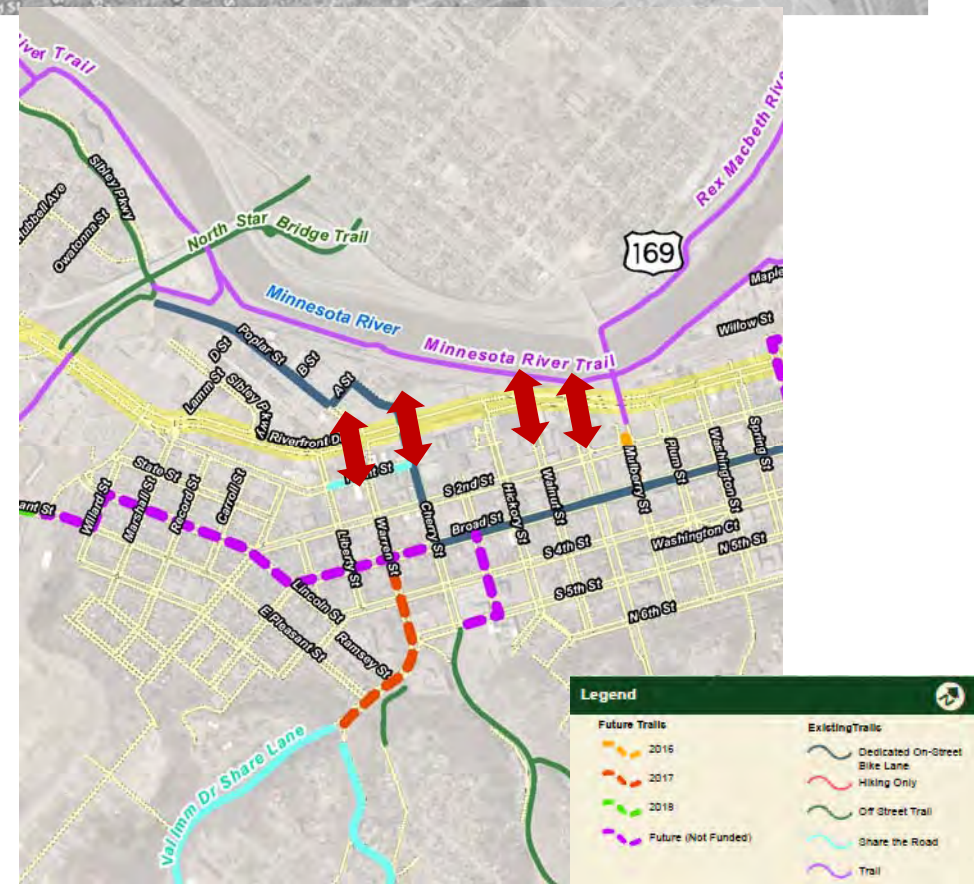
Existing Conditions – Segment 2

(Sibley Parkway to Veteran's Memorial Bridge)

Pedestrian and Bicycle

High demand crossings:

- Poplar/Warren St intersection
- Cherry/Minnesota St
- Minnesota River Trail access at Main St
- Civic Center



What is your primary transportation concern with Segment 2 on Riverfront Drive?



Existing Conditions – Segment 3

(Veteran's Memorial Bridge to Madison Avenue)

Land Use/Major Traffic Generators

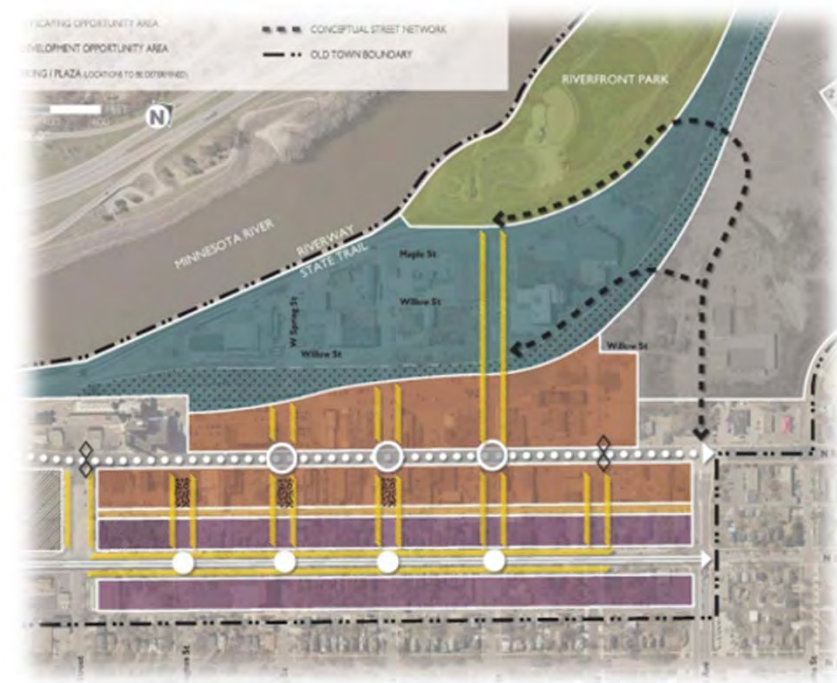
- Old Town District
- Industrial Land Uses/Freight Generators
- Coughlan Mine Redevelopment Area
- Bridge Plaza Redevelopment Area
- Riverfront Park
- Other commercial businesses



Old Town Master Plan Recommendations

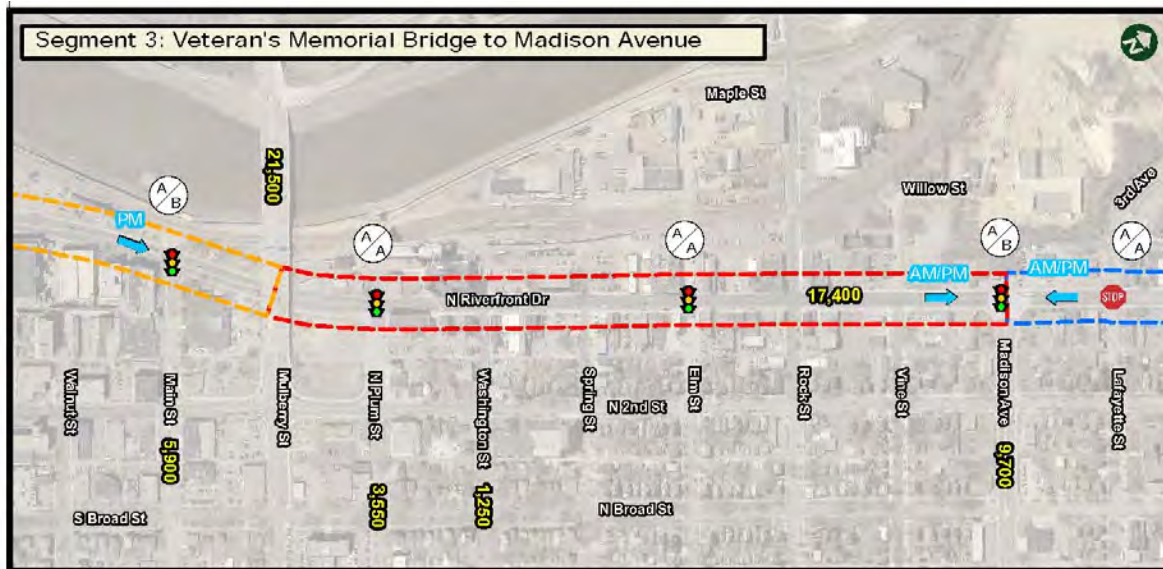
1. Examine traffic characteristics along Riverfront Drive
 - Examine right-sizing the street and other complete street elements to reduce traffic speeds
 - Encourage a walkable environment
2. Improve connectivity
 - Improve pedestrian crossings
 - Improve pedestrian connections to city center core/entertainment
 - Foster a multi-modal transportation network
3. Reconnect to the river and the quarry

Study Adopted August 2016



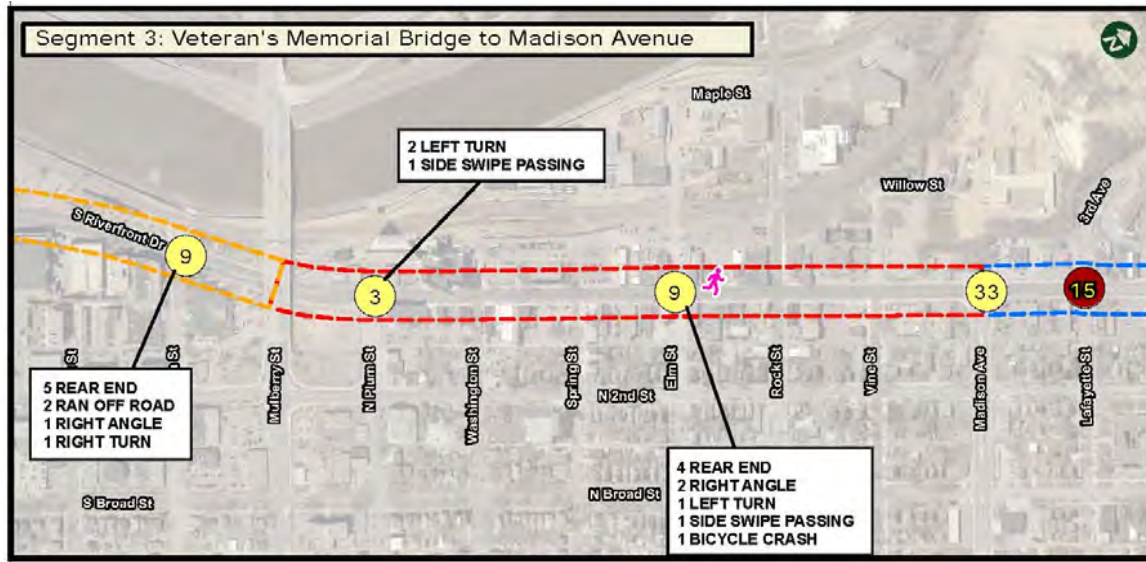
Existing Conditions – Segment 3 (Veteran's Memorial Bridge to Madison Avenue)

Traffic Operations and Speeds



Existing Conditions – Segment 3 (Veteran's Memorial Bridge to Madison Avenue)

Crash History

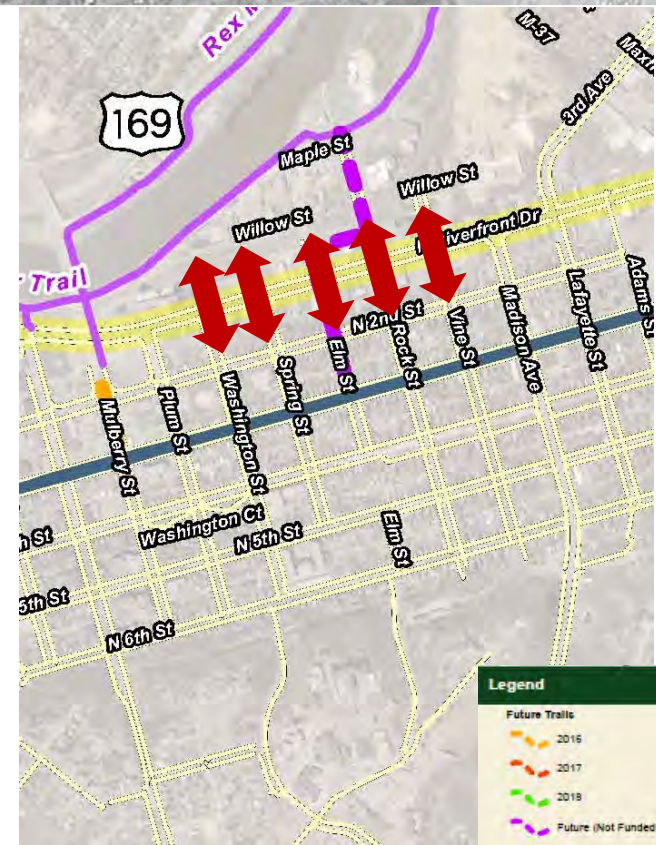


Existing Conditions – Segment 3 (Veteran's Memorial Bridge to Madison Avenue)

Pedestrian and Bicycle

High demand crossings:

- Within Old Town District
- Rock Street (to park)
- Potential future bicycle connection at Elm St



What is your primary transportation concern with Segment 3 on Riverfront Drive?

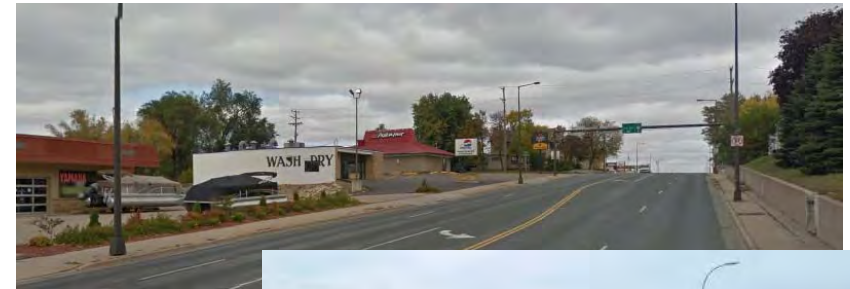


Existing Conditions – Segment 4

(Madison Avenue to Highway 14)

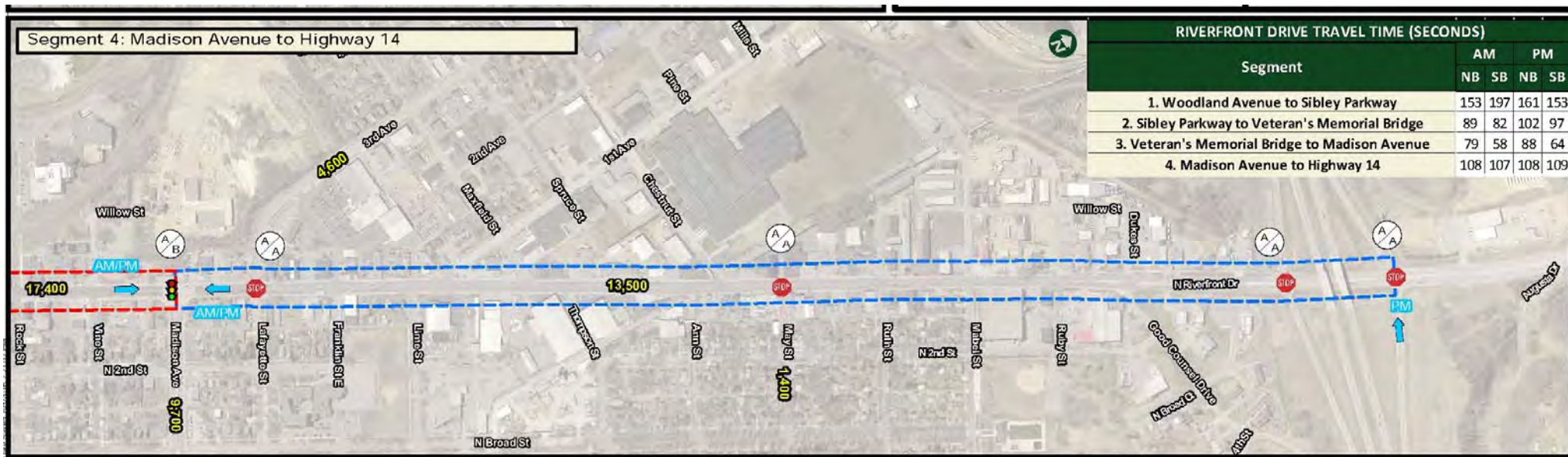
Land Use/Major Traffic Generators

- Commercial
- Industrial
- Distribution Centers
- Residential
- Franklin Elementary School
- Loyola School
- Highway 14 access



Existing Conditions – Segment 4 (Madison Avenue to Highway 14)

Traffic Operations and Speeds



Existing Conditions – Segment 4

(Madison Avenue to Highway 14)

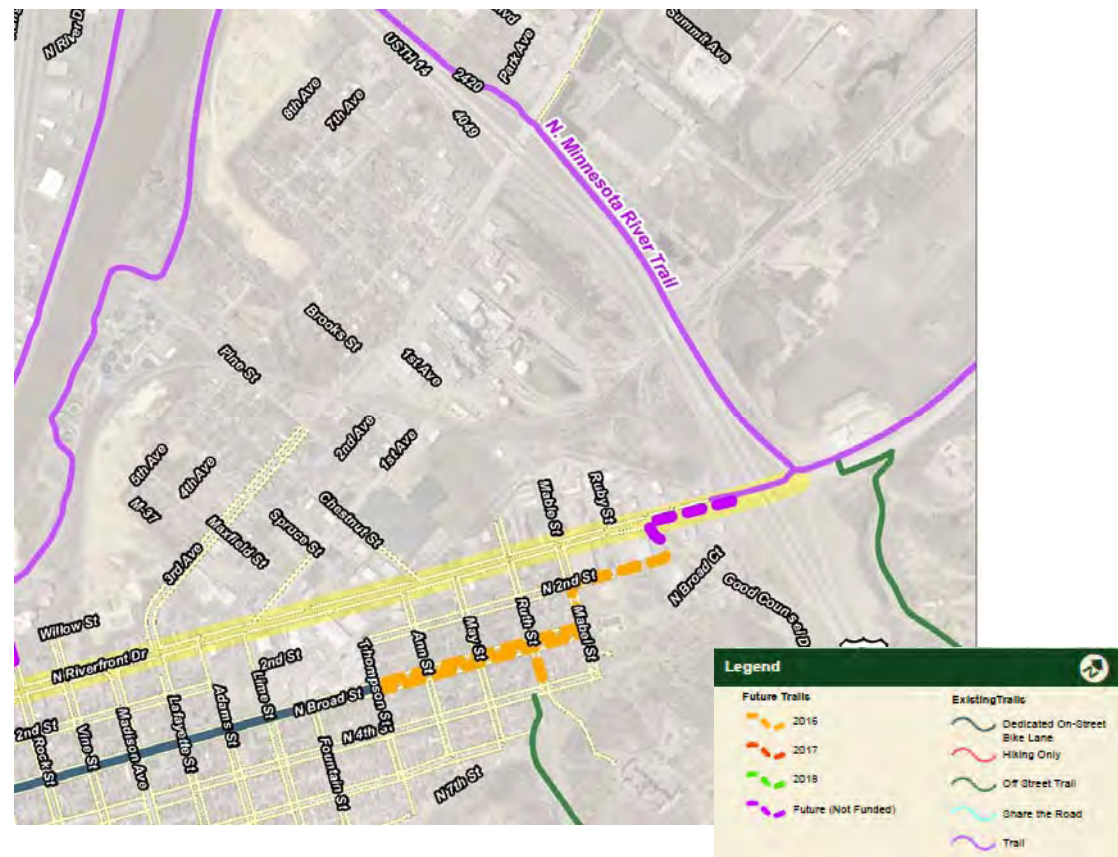
Crash History



Existing Conditions – Segment 4 (Madison Avenue to Highway 14)

Pedestrian and Bicycle

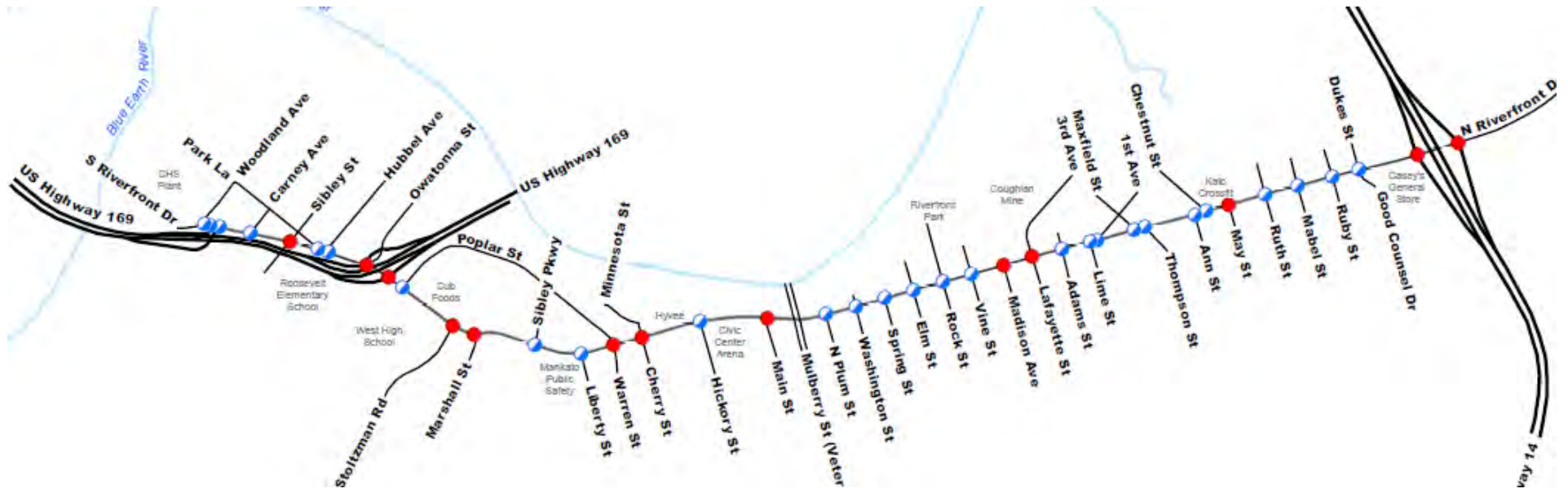
- Access to Minnesota River Trail
- Future connection to Broad Street on-road trail



What is your primary transportation concern with Segment 4 on Riverfront Drive?



Access



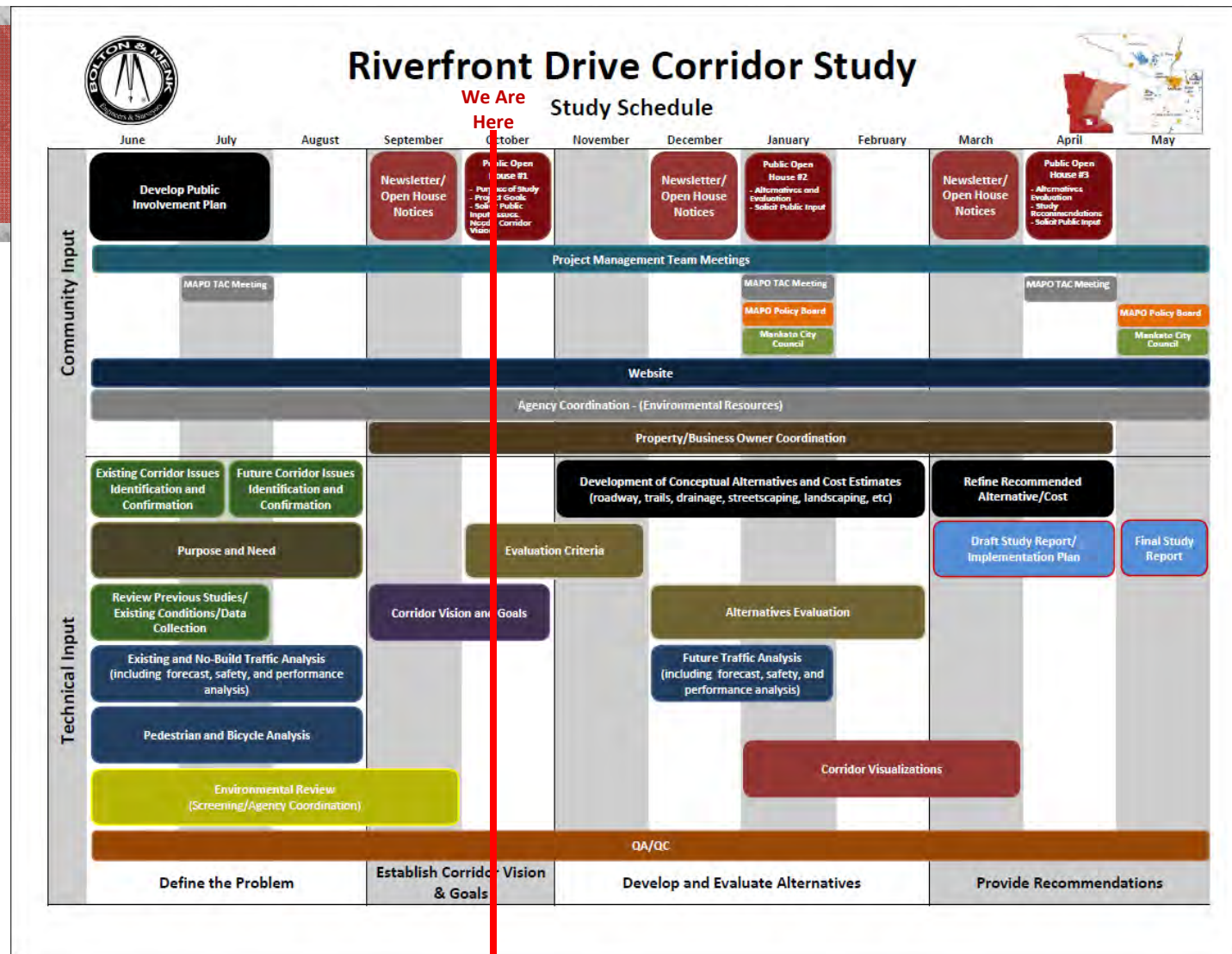
Corridor Goals

- Provide efficient vehicle and freight **mobility** and **access**
- **Safely** accommodate all users
- Support an inviting and safe **pedestrian** environment
- Support **bicycle connections** across Riverfront Drive
- Support **future land use** and **redevelopment** plans
- Provide improvements **compatible** with the historic and natural environment
- Enhance **community identity**



Schedule and Next Steps

- Develop alternatives (November - February)
- Open House #2 - Gather input on alternatives (January)
- Open House #3 – Study Recommendations (Spring)



Stay Involved!

MAPO
MANKATO/NORTH MANKATO
AREA PLANNING ORGANIZATION

Riverfront Drive - Corridor Study

Home Schedule Public Involvement Documents and Links

Riverfront Drive Corridor Study:
The Mankato/North Mankato Area Planning Organization (MAPO) and the City of Mankato, in partnership with Blue Earth County and the Minnesota Department of Transportation (MnDOT), are working together to identify multimodal transportation improvements on Riverfront Drive between Woodland Avenue and Highway 14. Riverfront Drive serves an important role in providing access and connectivity to downtown Mankato and providing primary connections to other parts of Mankato and North Mankato, including Highways 14 and 169. Riverfront Drive serves multiple transportation users including automobiles, freight, transit, pedestrians and bicyclists.

The City of Mankato desires to define a comprehensive vision for Riverfront Drive to continue their momentum in City Center reinvestment while also serving continued growth and local/regional mobility needs over the next 25 years. The study will include:

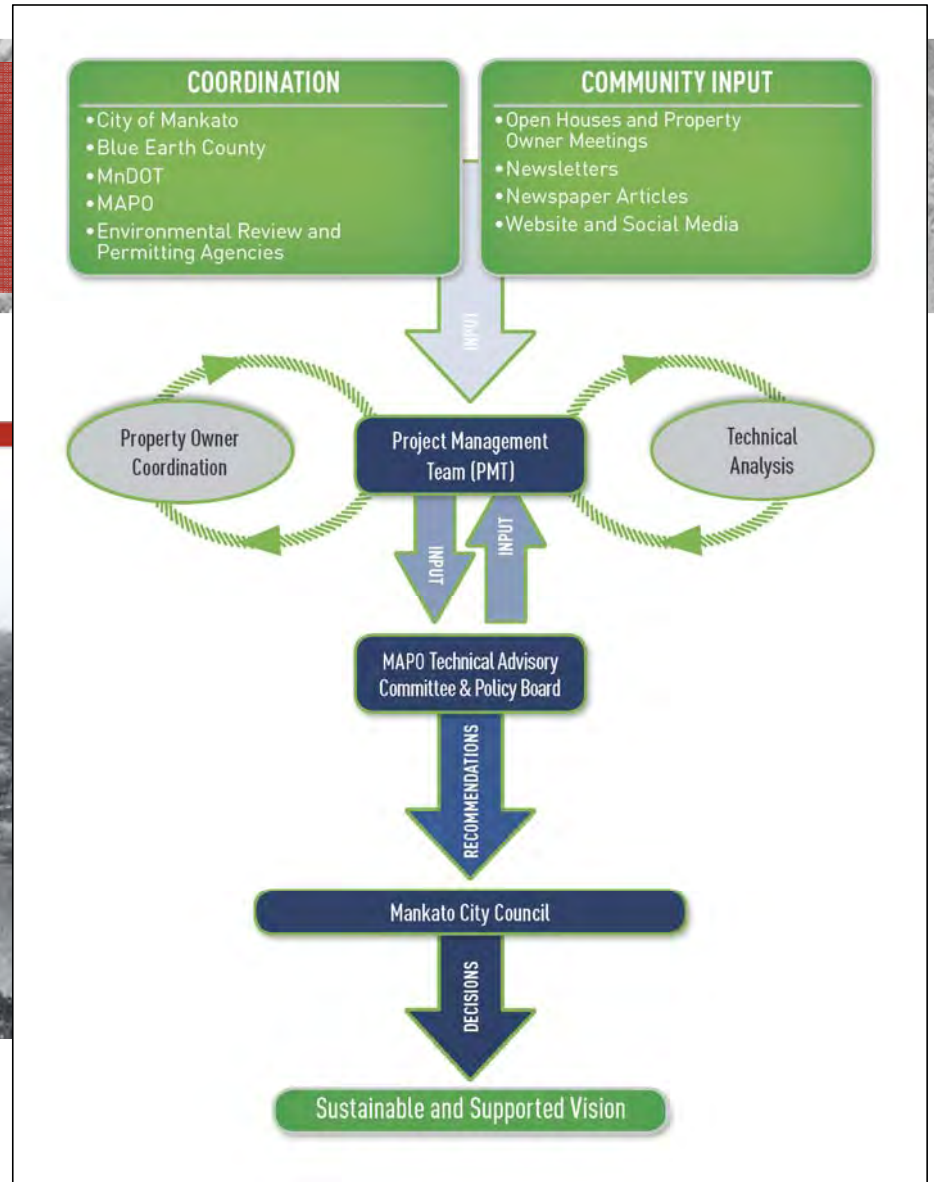
- Defining the issues and potential opportunities along the corridor
- Establishing the corridor vision and goals
- Developing and evaluating potential multimodal infrastructure improvement alternatives
- Developing a long-term implementation plan that identifies potential projects, cost estimates and funding opportunities

Study recommendations are anticipated to be complete in 2017.

Save the Date:
OCTOBER 18, 2016
5:30 - 7:30 pm
Presentation at 6 p.m.
Intergovernmental Center
(Mankato Room)
10 Civic Center Plaza

Open House
Newsletter

Contacts:
Mankato/North Mankato Area Planning Organization (MAPO)
Paul Vogel
507-387-8613
pvogel@mankatomn.gov
Jake Huebsch
507-387-8630
jhuebsch@mankatomn.gov
Bolton & Menk, Inc.



Project Contacts

Mankato/North Mankato Area Planning Organization (MAPO)

Paul Vogel

Executive Director

507-387-8613

pvogel@mankatomn.gov

Jake Huebsch

Transportation Planner

507-387-8630

jhuebsch@mankatomn.gov

Project Website:

<https://www.bolton-menk.com/clients/mapo/riverfront/>

MAPO Website:

www.mnmapo.org

