

Please Sign In & grab a comment card!



WELCOME TO THE PLATT STREET OPEN HOUSE!

INTRODUCTION:

Jackson County, is in the unique position of having an arterial corridor with significant opportunity for improvement with transformational change. Maquoketa is positioned for growth, the transformation of Platt Street will stimulate the evolution in small businesses, dining, entertainment, and housing. Throughout the process there will be multiple forms of public involvement, Online Surveys, Open Houses, & Stake Holder meetings.



Tonight's Meeting: What to Expect

4:30 pm - 6:00 pm
Tonights Open House includes preliminary design layout of the proposed improvements to the Platt Street Corridor. Please review the content on the boards and ask our design team if you have any questions or need additional clarification.

Meeting To-Do List

- Review preliminary design content
- Review project construction timeline and phasing
- Collect your input

PROJECT OBJECTIVE & OUTCOMES

OBJECTIVE:
Develop a 'right-sized approach to improving the Platt Street Corridor that improves public safety, enhances the visual quality of the corridor and promotes the economic vitality of Maquoketa.

OUTCOMES:

- Preliminary design through construction.
- Mill & overlay portions of existing street pavement from Highway 61 to Vermont.
- Full reconstruction from Vermont to Highway 62.

JANUARY 2020

STREETSCAPE ENHANCEMENTS OVERVIEW



STREETSCAPE ENHANCEMENT OVERVIEW:



WEST ENTRANCE
INTERSECTION
IMPROVEMENTS

WEST ENTRANCE
INTERSECTION
IMPROVEMENTS

WEST ENTRANCE
GATEWAY /
LANDSCAPE
IMPROVEMENTS

INTERSECTION
IMPROVEMENTS

INTERSECTION
& LANDSCAPE
IMPROVEMENTS

INTERSECTION
& LANDSCAPE
IMPROVEMENTS

PEDESTRIAN CROSSING
IMPROVEMENTS,
INTERSECTION
& LANDSCAPE
IMPROVEMENTS

PEDESTRIAN CROSSING
IMPROVEMENTS,
INTERSECTION
& LANDSCAPE
IMPROVEMENTS

EAST ENTRANCE
GATEWAY /
LANDSCAPE
IMPROVEMENTS

CONSTRUCTION TIMELINE



CONSTRUCTION PHASING / TIMELINE:



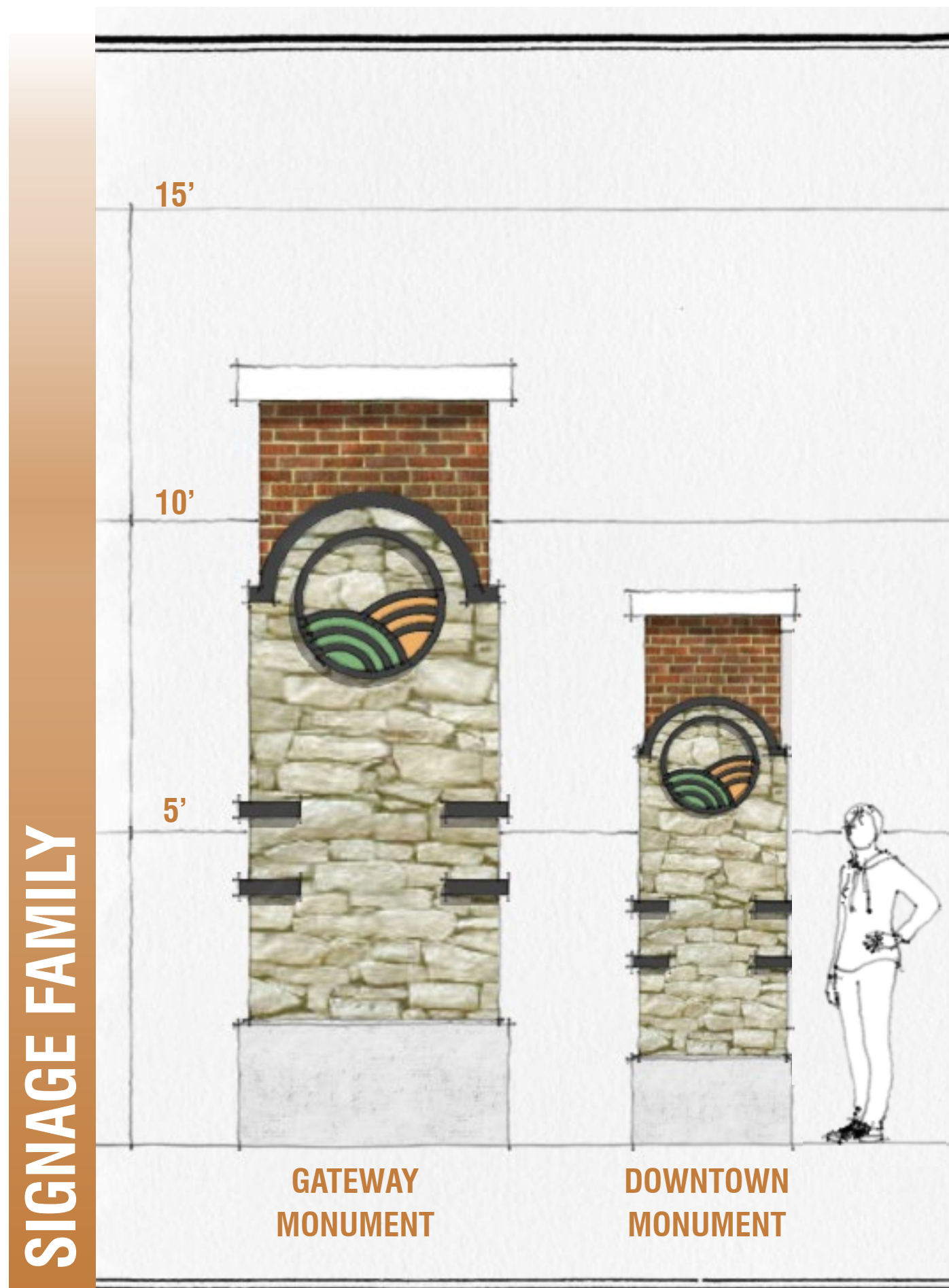
GATEWAY/INTERSECTION ENHANCEMENT:



PLAN VIEW OF GATEWAY



VIEW LOOKING WEST AT GATEWAY



VIEW LOOKING EAST AT WEST PLATT GATEWAY

GATEWAY/INTERSECTION ENHANCEMENT:

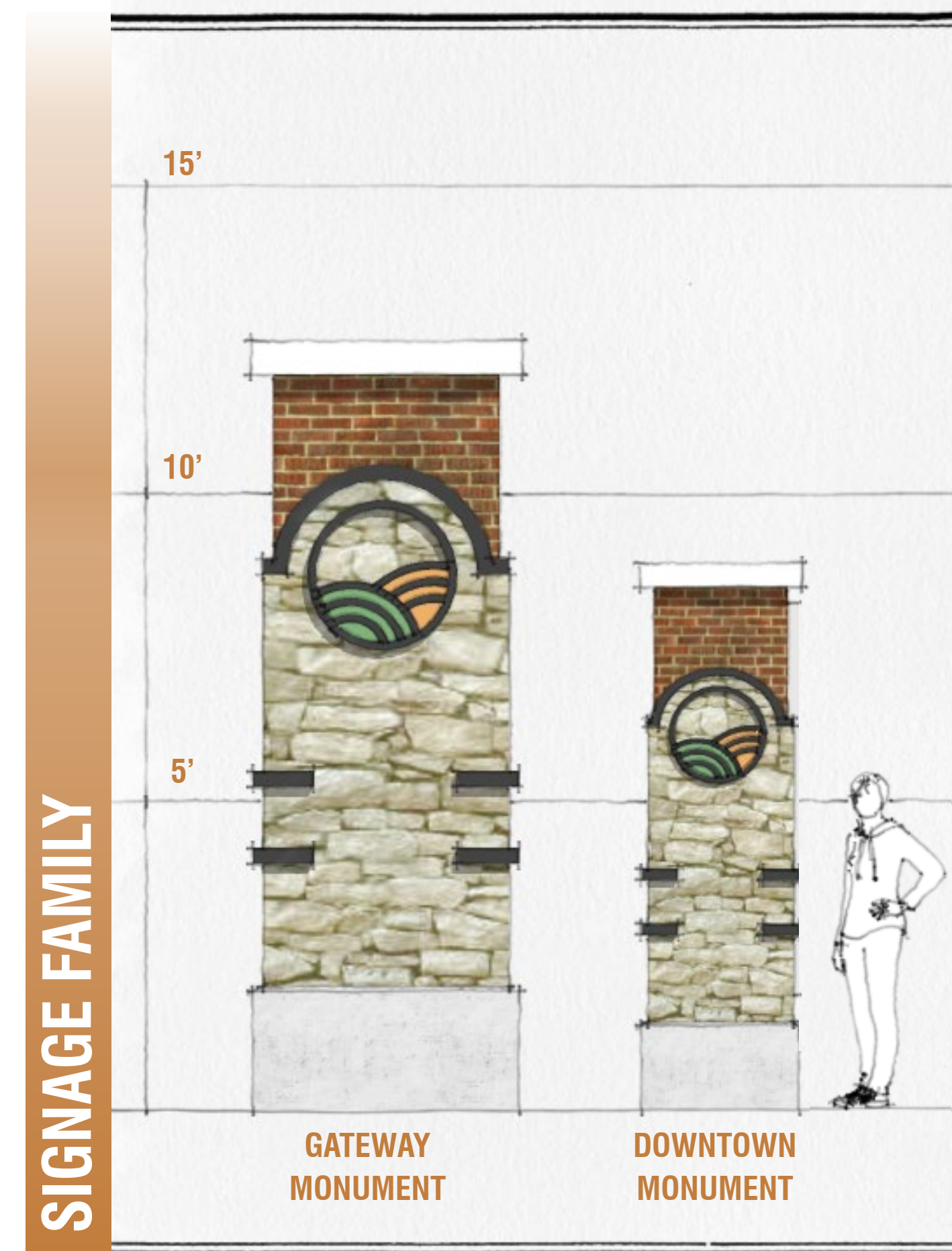


NIAGARA STREET TO MAIN STREET



PLAN VIEW OF DOWNTOWN MONUMENTS

VIEW LOOKING WEST

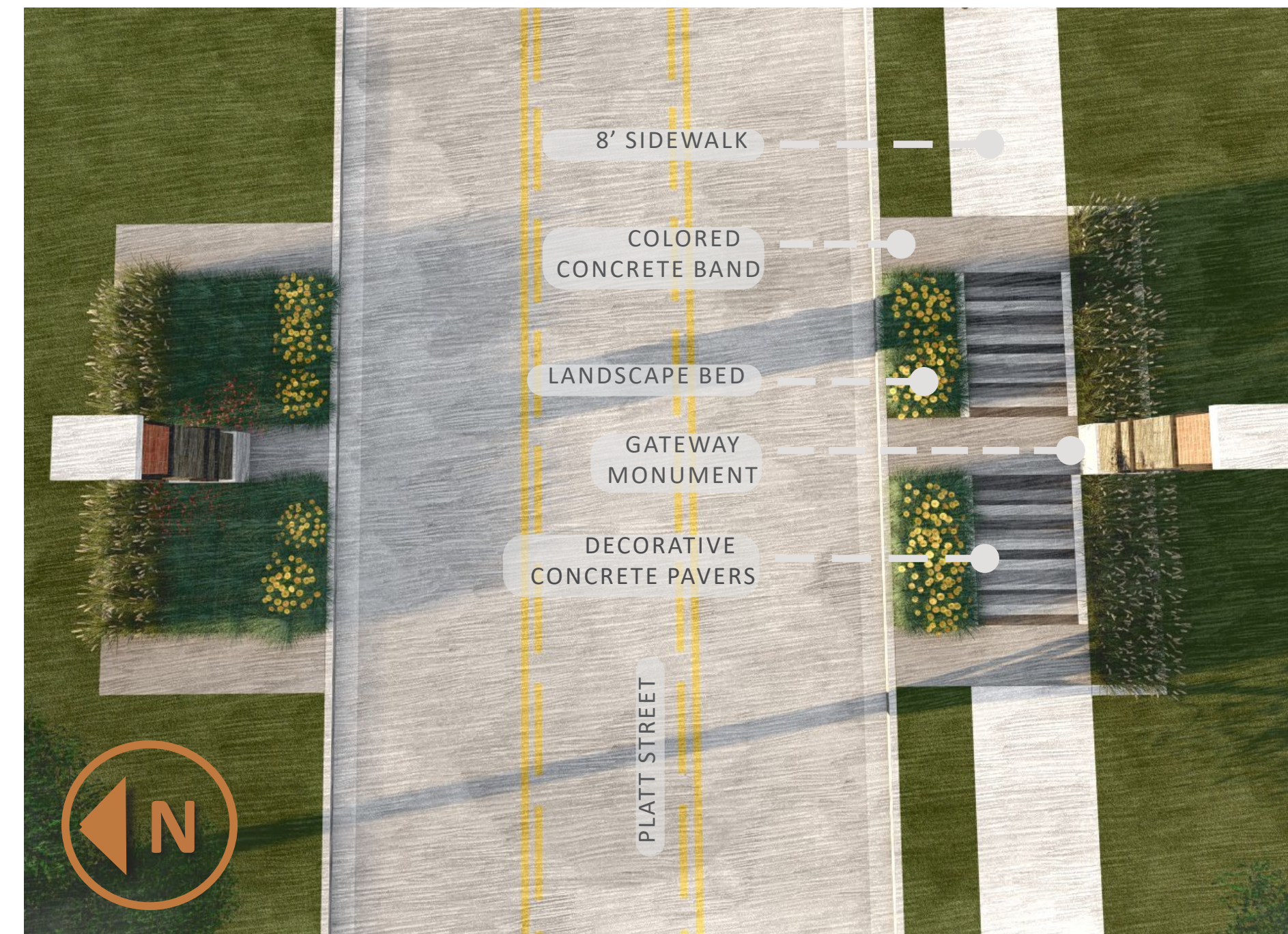
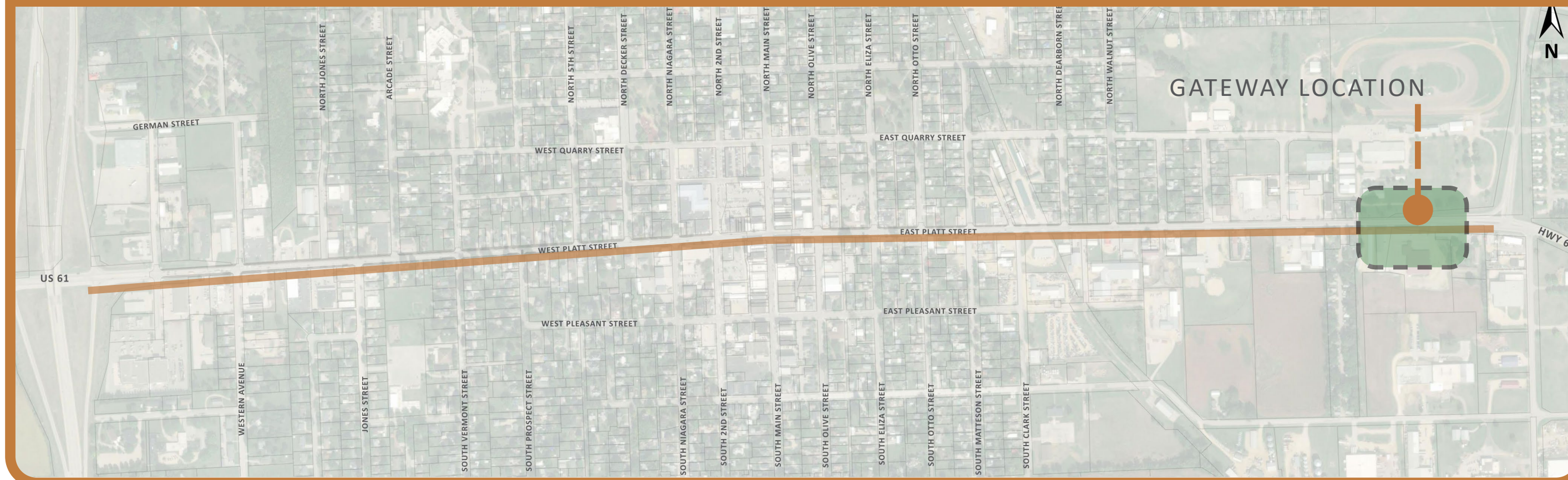


VIEW LOOKING EAST AT DOWNTOWN MONUMENTS

GATEWAY/INTERSECTION ENHANCEMENT:



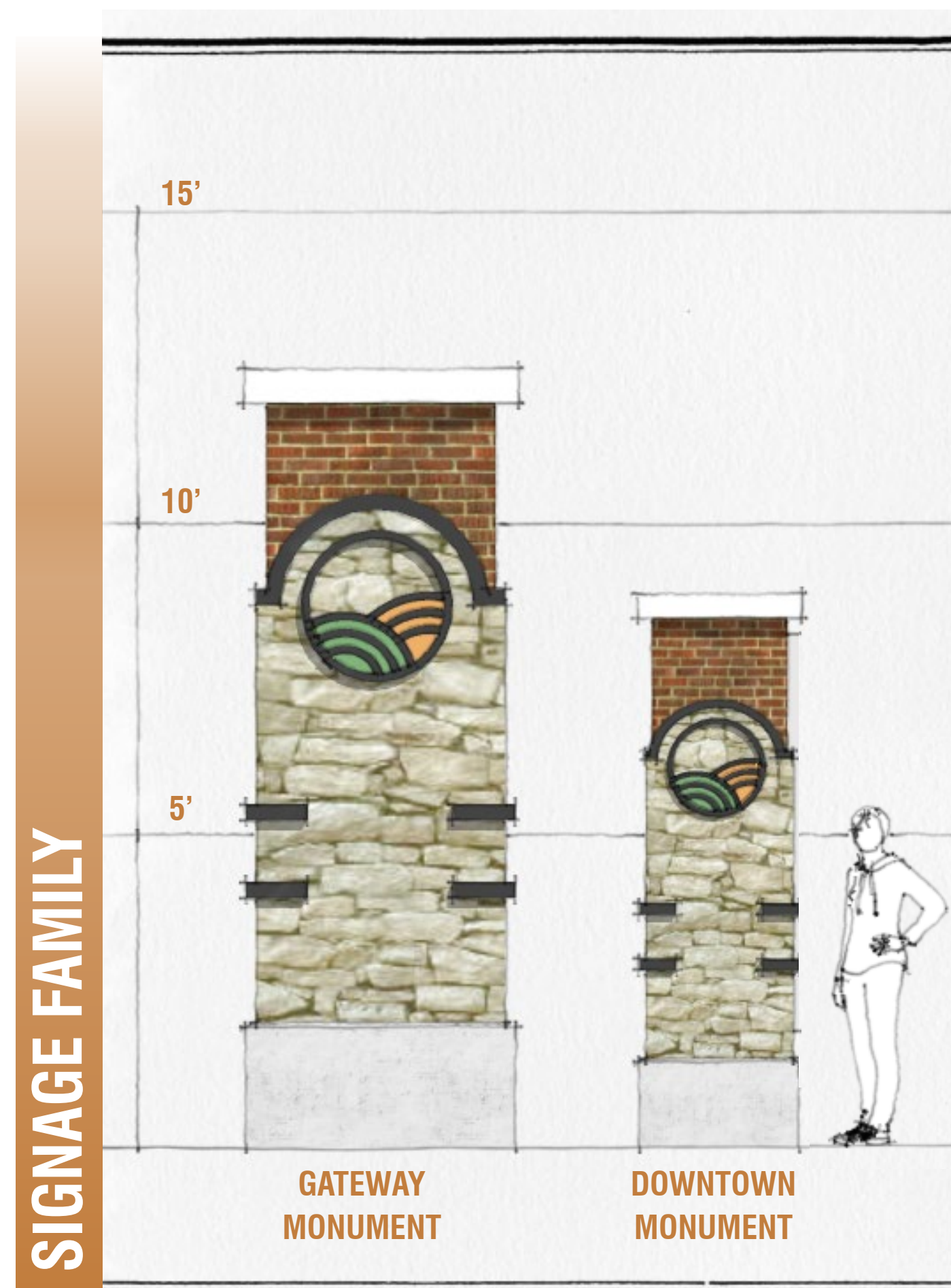
EAST ENTRANCE/FAIRGROUNDS



PLAN VIEW OF EAST GATEWAY



VIEW LOOKING EAST



VIEW LOOKING EAST AT EAST PLATT GATEWAY