



Construction Staging Overview

CH 21 Downtown Prior Lake Improvement & TH 13 Reconstruction Projects

What is Construction Staging?

Sequence and timing of work, or the steps that need to be taken during construction in order to build a project



STAGE 1

Spring to mid-summer 2019

STAGE 2

Mid-summer to fall/early winter 2019

DULUTH AVE

Intersection improvements, 2018

AREA UNDER CONSTRUCTION

AREA UNDER CONSTRUCTION

AREA UNDER CONSTRUCTION

STAGE 1

Spring to mid-summer 2019

Staging Considerations:

- Detour routes (road closure) versus under construction, but open to traffic
- Construction acceleration opportunities (longer working days, weekends, etc.)
- Key travel routes (regional and local)
- Access in/out of area
- Public safety & emergency services
- Space for contractor to work safely and efficiently
- Specific business needs
- Community events

Schedule:

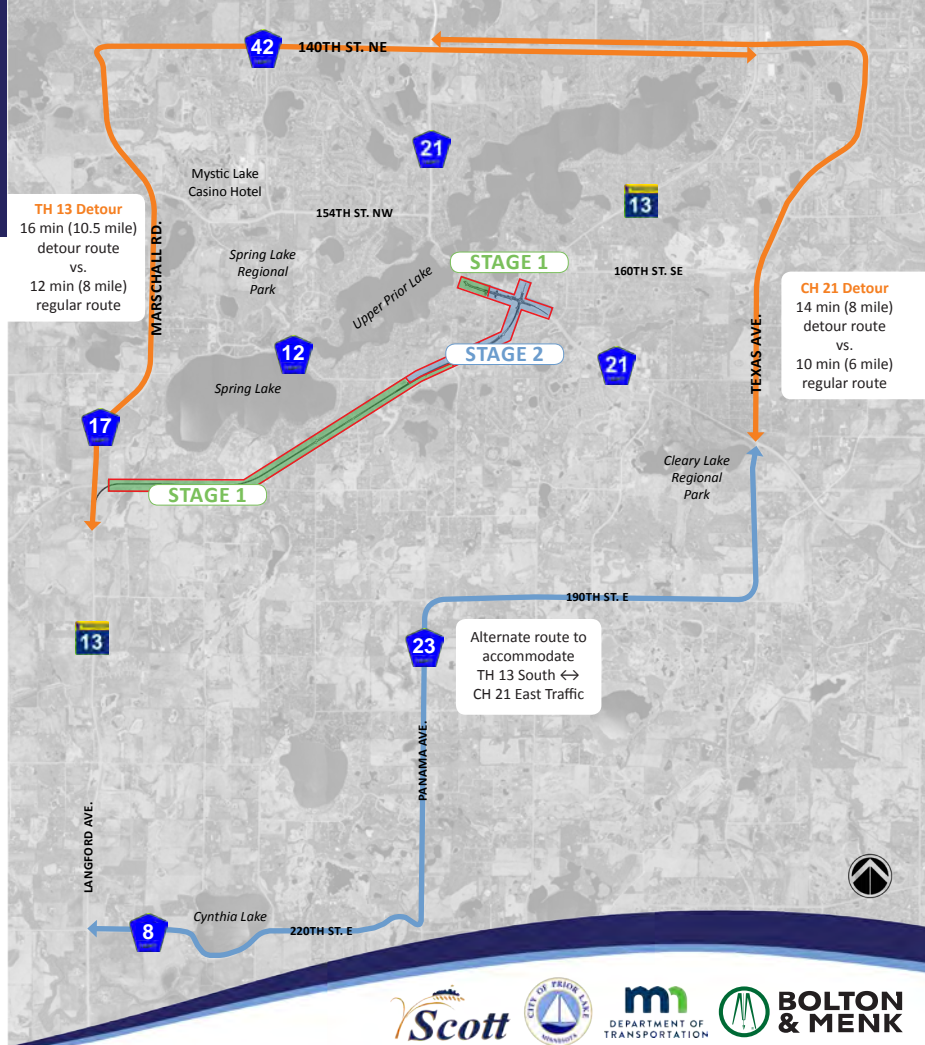
- Duration of construction is based on production rates and probable working days
- May thru October is "normal" construction season
- 5 day working weeks, not including holidays
- 8 hour working days

Regional Detour Routes

CH 21 Downtown Prior Lake Improvement & TH 13 Reconstruction Projects

Detour Routes Rules of Thumb

- 1/3 follow detour
- 1/3 destinations within
- 1/3 find different route or change trip



TH 13 Detour
 16 min (10.5 mile) detour route vs. 12 min (8 mile) regular route

CH 21 Detour
 14 min (8 mile) detour route vs. 10 min (6 mile) regular route

Alternate route to accommodate TH 13 South ↔ CH 21 East Traffic



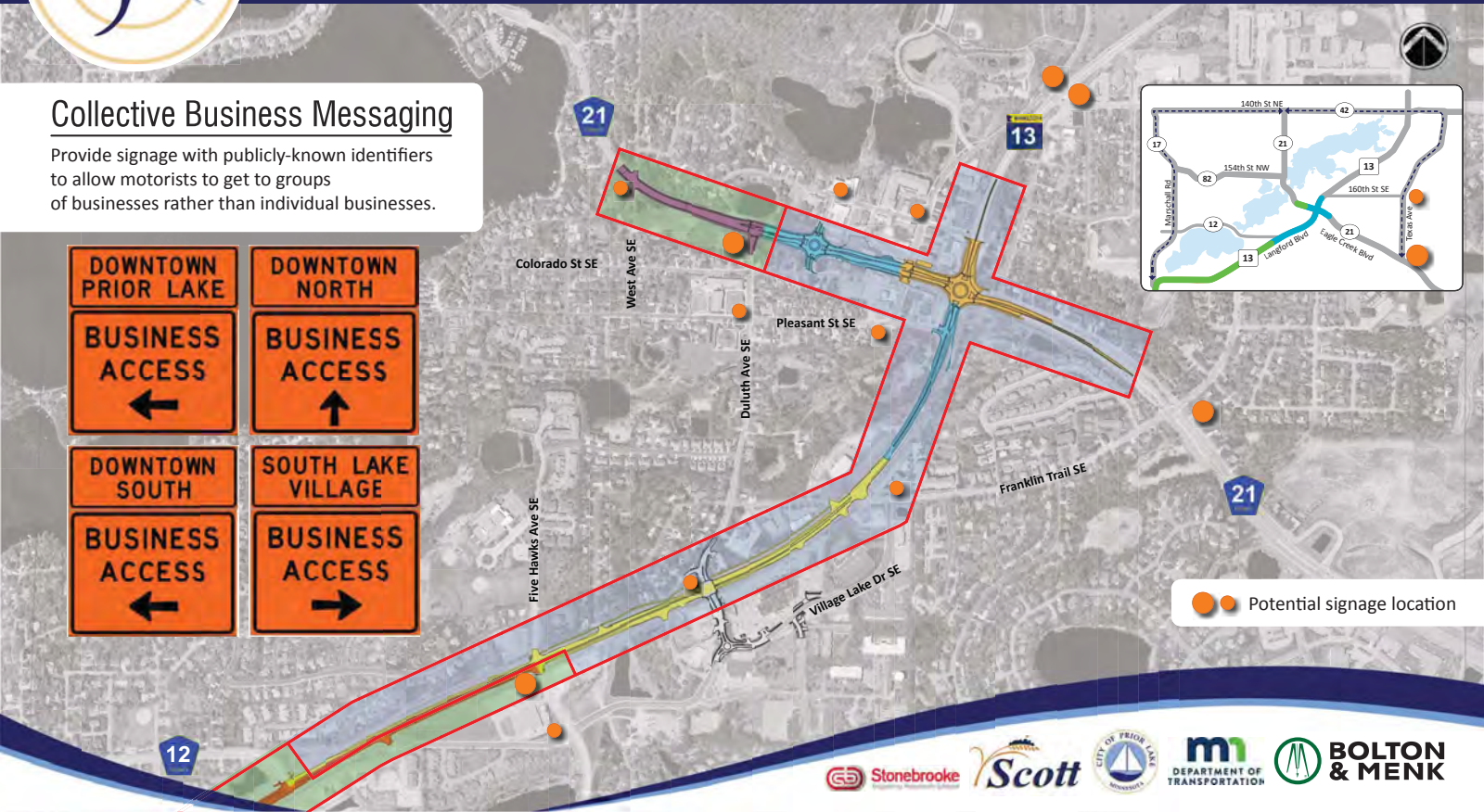
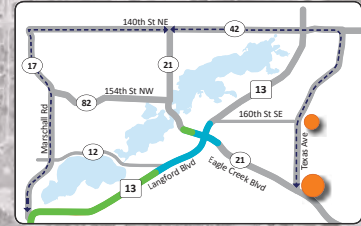


Local Access Routes

CH 21 Downtown Prior Lake Improvement & TH 13 Reconstruction Projects

Collective Business Messaging

Provide signage with publicly-known identifiers to allow motorists to get to groups of businesses rather than individual businesses.



●● Potential signage location



Construction Stage 1

CH 21 Downtown Prior Lake Improvement & TH 13 Reconstruction Projects

	2019							
	April	May	June	July	Aug.	Sept.	Oct.	
Stage 1A (TH 13)								
Stage 1B (TH 13)								
Stage 1A (CH 21)								
Stage 1C (TH 13)								
Stage 2A (TH 13)								
Stage 2A (CH 21)								
Integra Utility Relocation								
Stage 2B (TH 13/CH 21)								

STAGE 1A (TH 13)
West project termini to Vergus Ave

STAGE 1B (TH 13)
Vergus Ave to CH-81 (Fairlawn Ave)

STAGE 1C (TH 13)
CH 81 to CH 12/S. Half of TH 13 from CH 12 to CH 23 (Panama Ave)

STAGE 1A (CH 21)

Center median not constructed until after opening of roundabout at Arcadia Ave.

East project termini to Duluth Ave

See Stage 2 Board



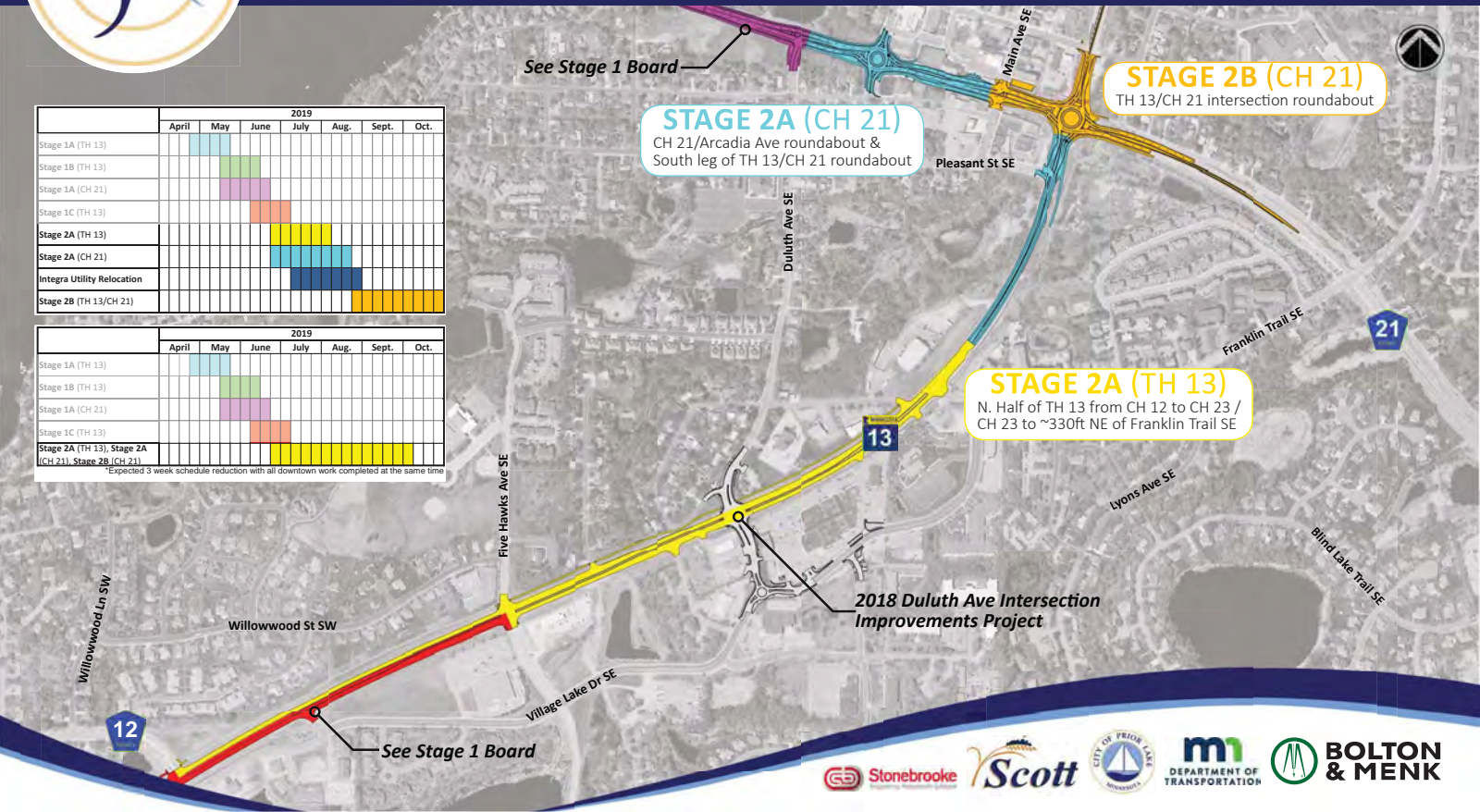
Construction Stage 2

CH 21 Downtown Prior Lake Improvement & TH 13 Reconstruction Projects

	2019							
	April	May	June	July	Aug.	Sept.	Oct.	
Stage 1A (TH 13)								
Stage 1B (TH 13)								
Stage 1A (CH 21)								
Stage 1C (TH 13)								
Stage 2A (TH 13)								
Stage 2A (CH 21)								
Integra Utility Relocation								
Stage 2B (TH 13/CH 21)								

	2019							
	April	May	June	July	Aug.	Sept.	Oct.	
Stage 1A (TH 13)								
Stage 1B (TH 13)								
Stage 1A (CH 21)								
Stage 1C (TH 13)								
Stage 2A (TH 13), Stage 2A (CH 21), Stage 2B (CH 21)								

*Expected 3 week schedule reduction with all downtown work completed at the same time



See Stage 1 Board

STAGE 2A (CH 21)

CH 21/Arcadia Ave roundabout & South leg of TH 13/CH 21 roundabout

STAGE 2B (CH 21)

TH 13/CH 21 intersection roundabout

STAGE 2A (TH 13)

N. Half of TH 13 from CH 12 to CH 23 / CH 23 to ~330ft NE of Franklin Trail SE

2018 Duluth Ave Intersection Improvements Project

See Stage 1 Board





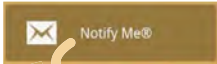
Construction Communications - What to Expect

CH 21 Downtown Prior Lake Improvement & TH 13 Reconstruction Projects

Several communication outlets will be utilized during construction to share current activities, impacts, and milestones with the public. The project team will provide content to all agencies so that messaging is clear, consistent, and timely.



Scott County will be responsible for regional detour signage during the project. Updates regarding closures, and detours will be shared through their email notification system, Notify Me. Their bi-monthly publication SCENE will provide project updates throughout construction.



Sign up here!

<http://scottcountymn.gov/roads>



Find us on movingforward13-21.com

Keep watching the project Facebook page and website for updates!

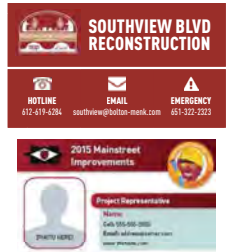
A short **video** will be released as construction staging details are finalized in order to share construction details and timeline with the community. This **graphic timeline** will be used with **written project updates** (shared electronically) to track progress.

Community Liaison (CL)

The CL will act as the central point of contact for the community and will relay any concerns to the project team and agencies.

Contact Cards

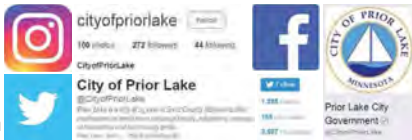
These will be distributed to residents, businesses, and stakeholders as construction nears and will include pertinent contact information.



Example contact cards



In addition to active social media pages, the weekly e-mail, City Newswire, and the bi-monthly publication, The Wavelength, will contain project updates throughout construction. Sign up to receive these updates on the City website.



Follow MnDOT's Facebook page or download the 511 app for updates throughout construction - you can find these on their project website:

<http://www.dot.state.mn.us/metro/projects/hwy13priorlake/>



BE READY.
KNOW YOUR ROUTE.
mndot.gov/knowyourroute





Construction Communications - What can the community do?

CH 21 Downtown Prior Lake Improvement & TH 13 Reconstruction Projects

Business Wayfinding Signage

...By Engineer/Contractor



Construction Communications!

Branded communication tools can rally the community during construction and clearly communicate what is part of the project. Two examples from Buffalo and Hopkins are shown here.



...By Communities!



Community Events

The events below are Community organized events from other Minnesota cities that brought visitors downtown during construction.

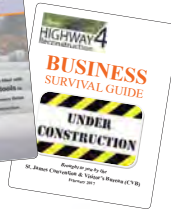


The Main Event
Redwing, Minnesota



Roundabout Rodeo
St. James, MN

Guiding Documents



Preparing for construction is key. St. James developed a "Business Survival Guide" with their Chamber of Commerce to prepare downtown businesses and unify the downtown as one big destination rather than individual business owners.

On the Road Again
South St. Paul, Minnesota

