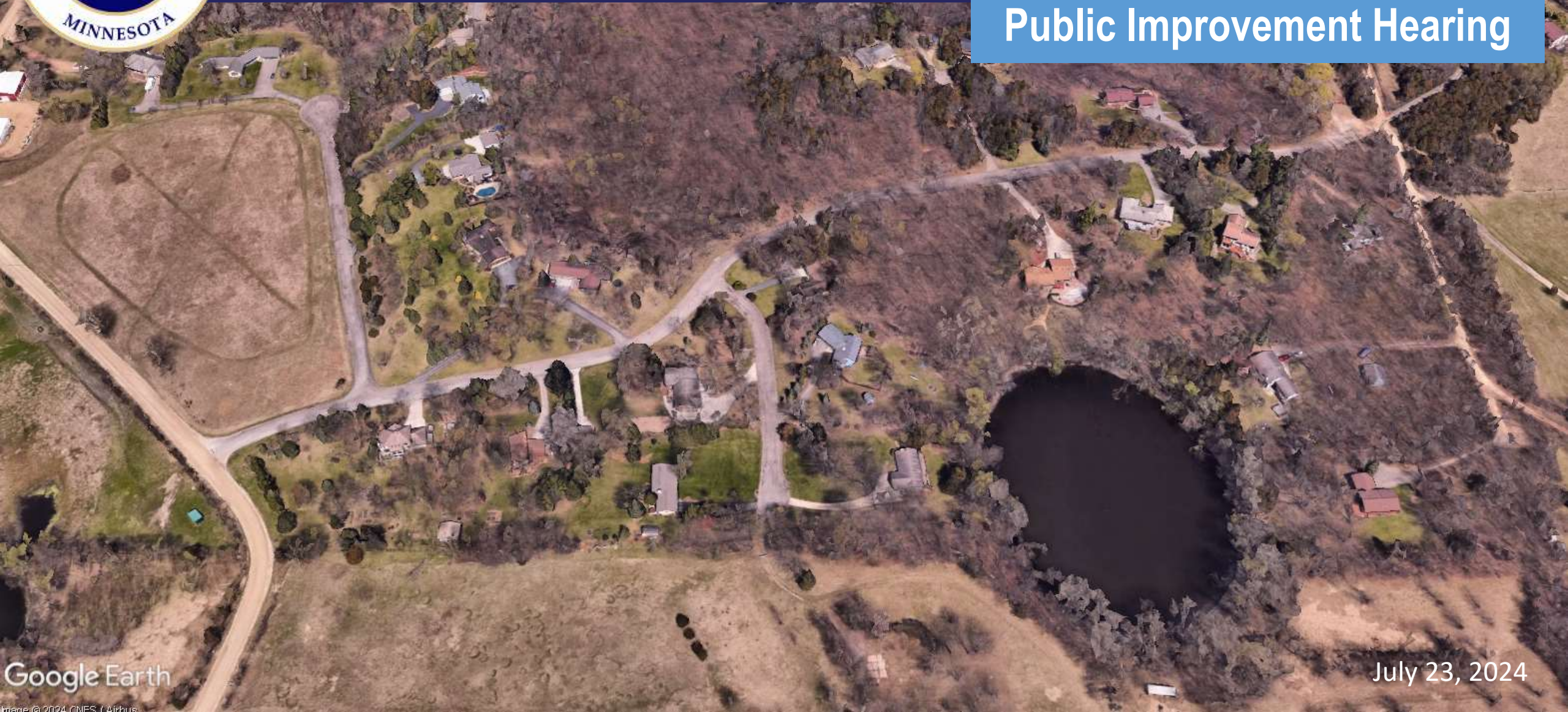




Martindale/Henning/Hickory Street Reclamation Project

Public Improvement Hearing





Agenda

- **Project Overview & Location**
- **Project Layout & Proposed Improvements**
- **Project Cost & Funding**
- **Project Assessments**
- **Project Benefits**
- **Public Engagement**
- **Next Steps**

Project Overview & Location

- Existing pavement & bit curb is in poor condition
- Reclaim roadway pavement & pave new asphalt pavement surface
- Improve drainage w/ minor storm sewer repairs & extensions
- New concrete curb & gutter & concrete aprons
- Evaluate Turnarounds



Project Overview & Location

Pavement Full-Depth Reclamation & Full-Depth Resurfacing



Addition of Concrete Curb & Gutter

- More Effective Management of Stormwater Runoff, Drainage to Inlets, & Long-Term Maintenance
- Protection & Support for Pavement Edges to Mitigate Deterioration
- Helps to Accommodate Compaction & Improve Pavement Life



Project Cost and Funding

Estimated Project Costs	
Proposed Improvements	Estimated Cost
Street Improvements	\$880,000
Storm Sewer Improvements	\$150,000
Total Project	\$1,030,000

Project Cost and Funding

Estimated Funding Breakdown	
Funding Source	Estimated Project Cost
Ad Valorem Tax	\$538,000
Assessments	\$285,000
SMSC Cost Sharing	\$57,000
Utility Fund – Storm Sewer	\$150,000
Total Project	\$1,030,000

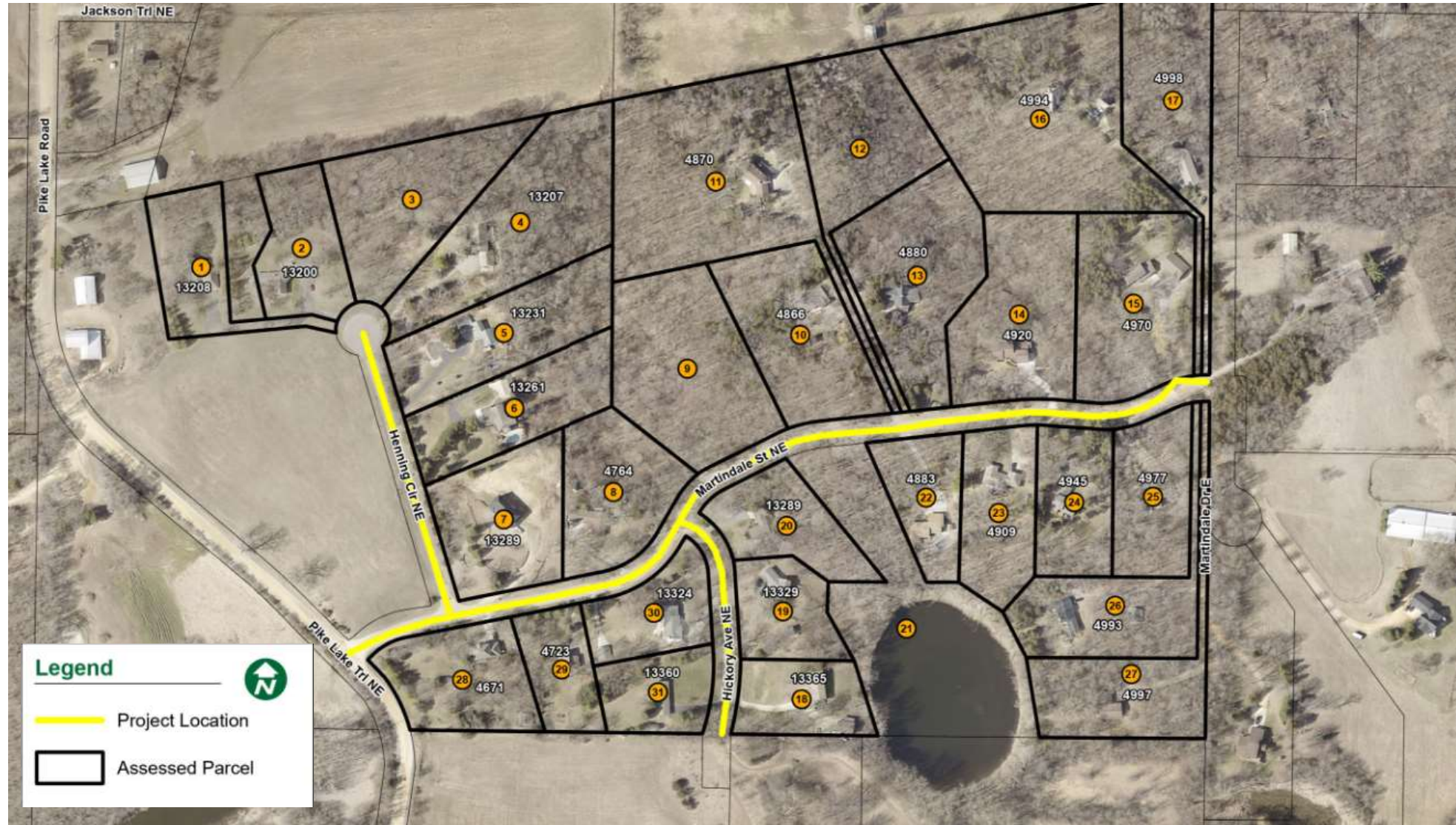
Preliminary Project Assessments

Prior Lake Special Assessment Policy for Public Improvements

- Residential Equivalent Unit (REU) Basis
 - Each property's REU is determined based on the maximum dwelling units for the property multiplied by the applicable factor for the property use
 - All properties in the project area are zoned as Rural Residential (R-S)
 - All properties in the project area are Single-Family which carries a factor of 1
- 40% of street improvement costs are assessed to properties with frontage to the road being improved for Reclamation projects
- Assessed over a 10-year period w/ an interest rate 2.0% higher than the most recent sale of City bonds
- Note: Project area includes the equivalent of 7 non-assessable REU's that were included in the assessment calculation

Preliminary Project Assessments

- 40% of Estimated Street Project Costs = \$352,000
- Total REU's = 37
- Estimated Assessment Rate = \$9,500
- Assessable REU's = 30
- Estimated Total Assessments = \$285,000



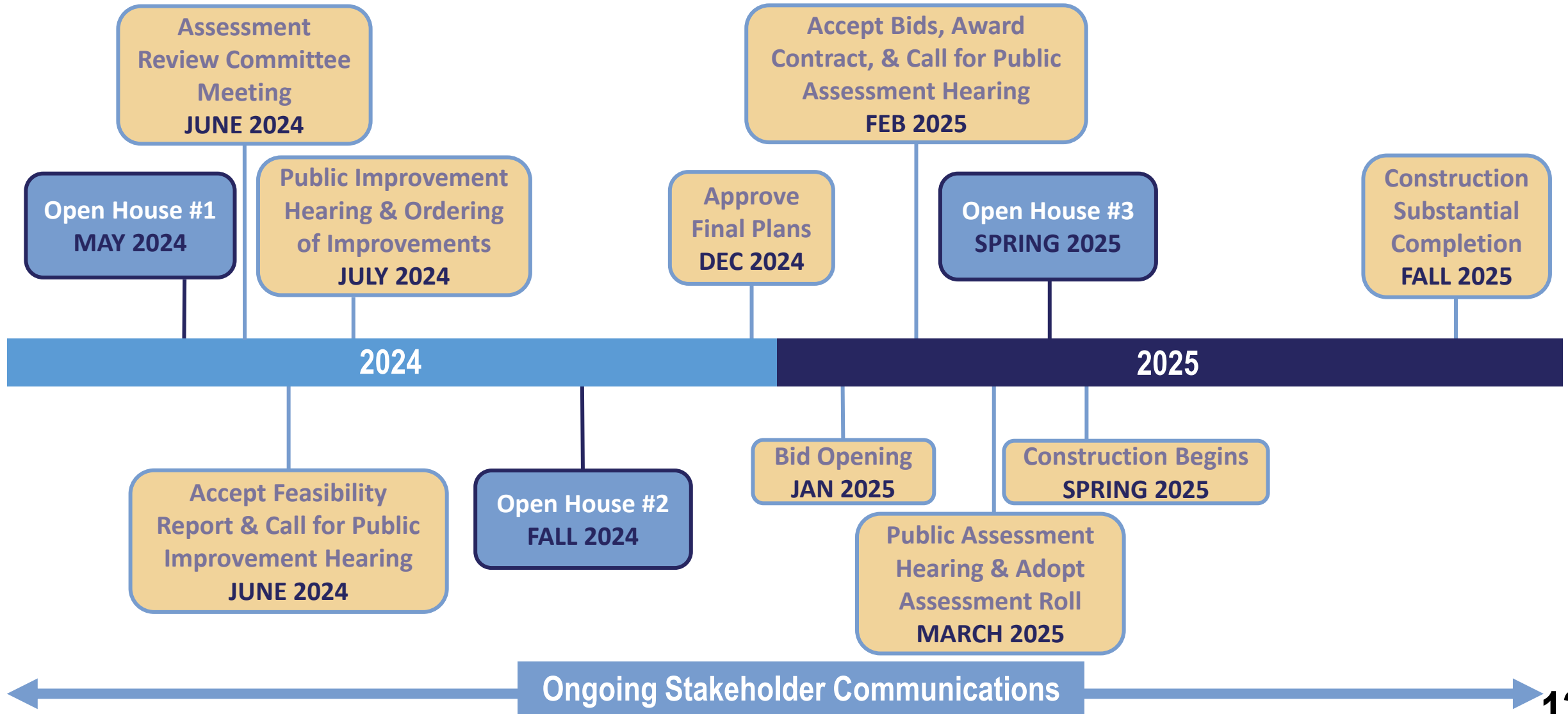
Overall Project Benefits

- **Replacement of failing pavement and aging infrastructure**
- **Improved stormwater runoff drainage**
- **Reduced long-term maintenance**

Public Engagement



Preliminary Project Schedule





Questions?



Website

clients.bolton-menk.com/priorlake2025



Email

PriorLake2025@bolton-menk.com



Email Updates

clients.bolton-menk.com/priorlake2025



Help Line

952-392-9631