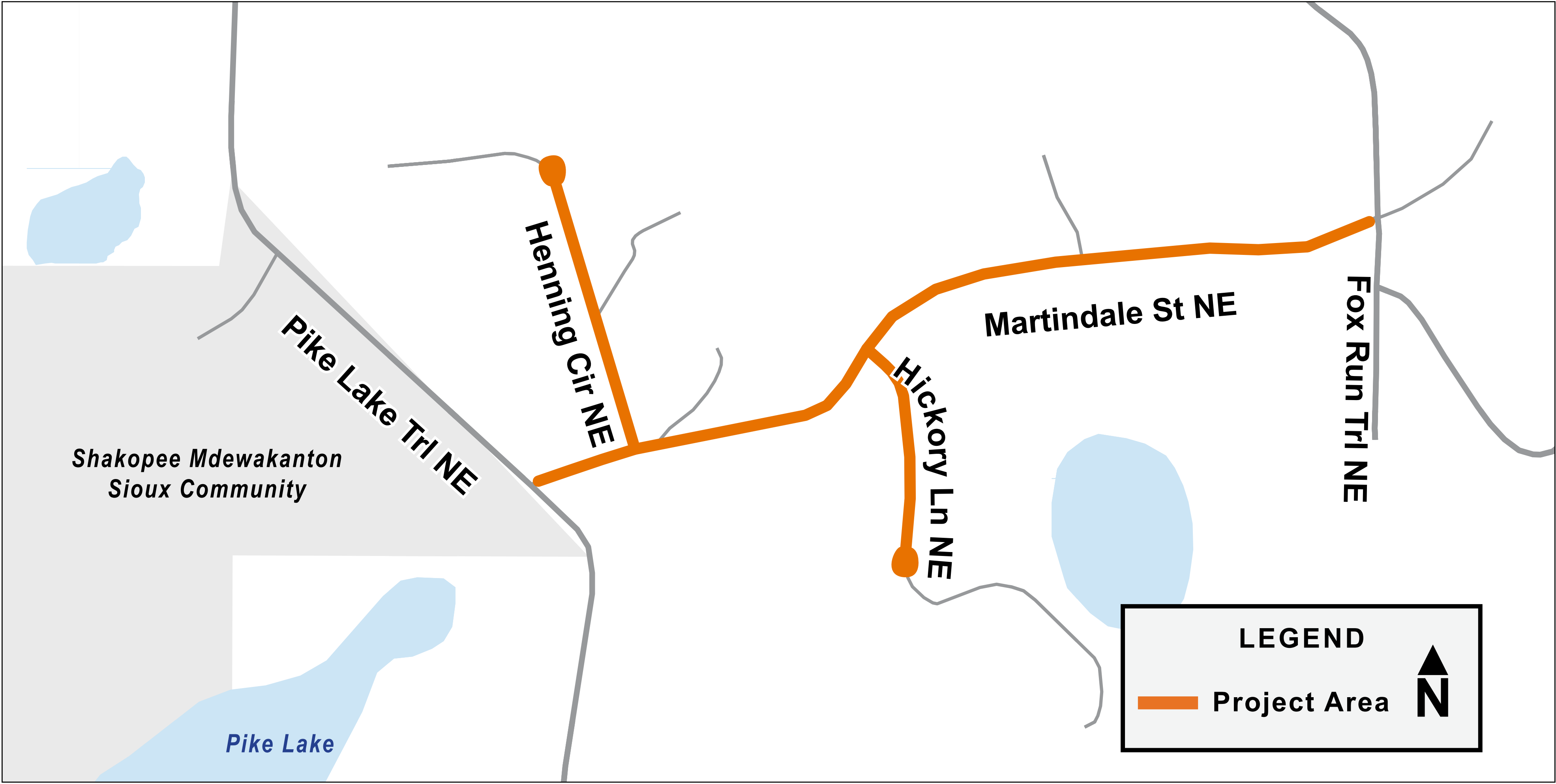


2025 Street Reclamation Overview



PROPOSED IMPROVEMENTS

The roadway pavement has reached the end of its useful life and needs to be replaced. The City of Prior Lake plans to:

- » Reclaim the roadway pavement (grind up the existing pavement to create a new gravel base) and pave a new asphalt pavement surface
- » Improve drainage in the area with minor storm sewer repairs and extensions
- » Street lighting may be considered if there is resident interest

CURRENT PAVEMENT & DRAINAGE



ANTICIPATED PROJECT SCHEDULE

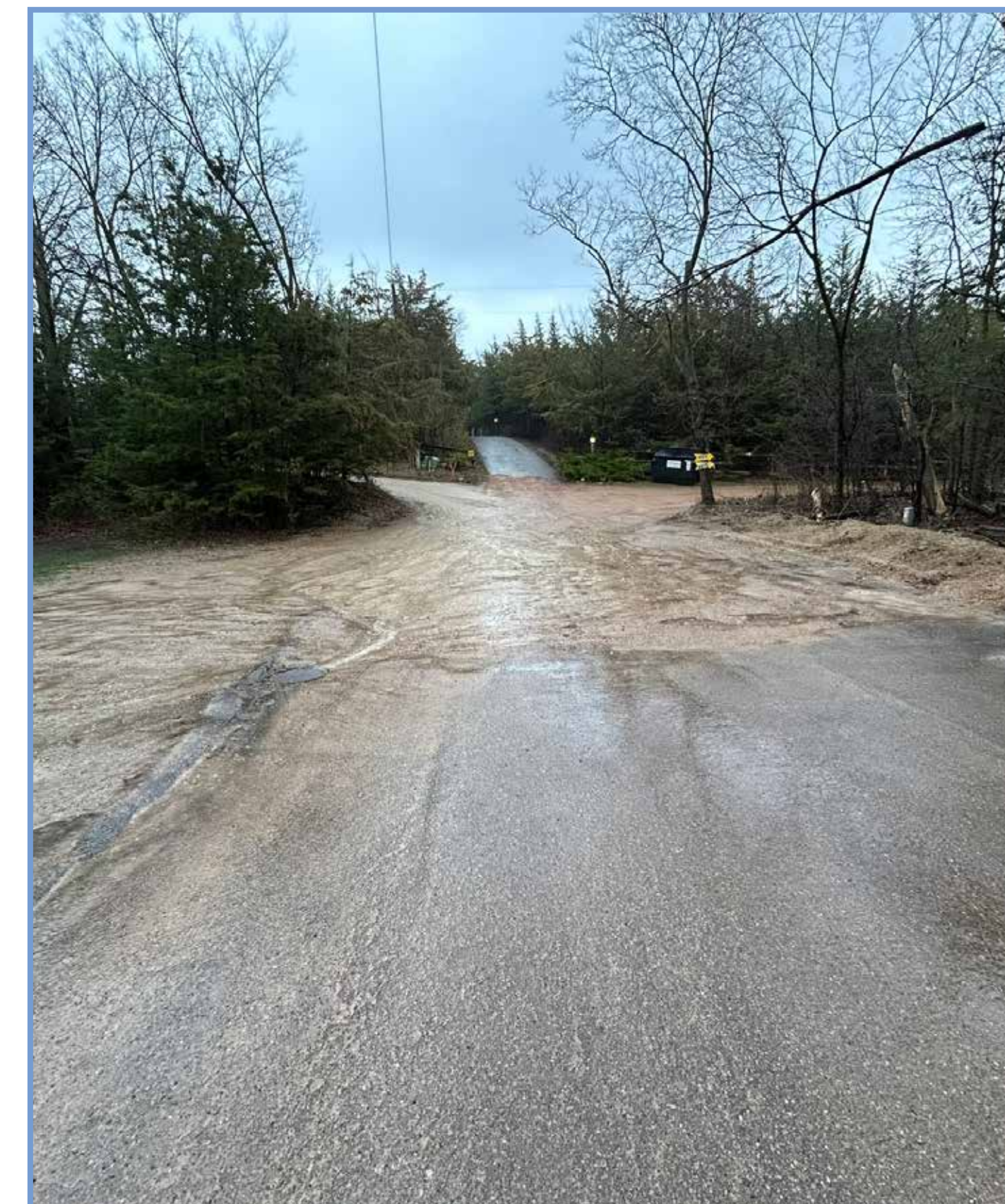


Recommended Design

REPLACEMENT OF ROAD WITH CONCRETE CURB & GUTTER

- » More effective stormwater runoff management
- » Reduces long-term pavement maintenance
- » Proposed assessment rate: **\$9,500/parcel**

PROPOSED IMPROVEMENTS	ESTIMATED COST
Street improvements	\$880,000
Drainage improvements	\$150,000
TOTAL COST	\$1,030,000



FUNDING & ASSESSMENTS

Although costs won't be finalized until Spring 2025, the table shows the current estimated construction costs assuming the installation of barrier style (B618) concrete curb and gutter. A portion of the project is planned to be funded by special assessments:

- » City's stormwater utility **pays for drainage improvements**
- » City's assessment policy: **60% City/40% Special Assessment**
- » **40%** of the street improvement costs will be **funded by special assessments**
- » **60%** of the street improvement costs will be **funded by the City** as well as storm sewer costs
- » Assessment amount is **spread equally amongst "Buildable Lots"**
- » Assessments are **payable over 10 years** with interest (rate 2% above last bond sale)
- » Assessment process anticipated to be **finalized in early 2025**

Pavement Reclamation Process



1 REMOVE EXISTING PAVEMENT

Heavy machinery grinds the pavement, using it as a gravel base for the road.



2 UTILITY REPAIRS

Drainage extensions and repairs to the storm sewer system are made.



3 CURB AND GUTTER

Construct curb and gutter (based on selected design).



4 ROADWAY SHAPING

Gravel base is compacted in preparation for paving.



5 ROADWAY PAVING

Paving occurs in two layers.



6 RESTORATION

Grass that is disturbed during construction is restored with seed and erosion control blanket.

Which option do you prefer?



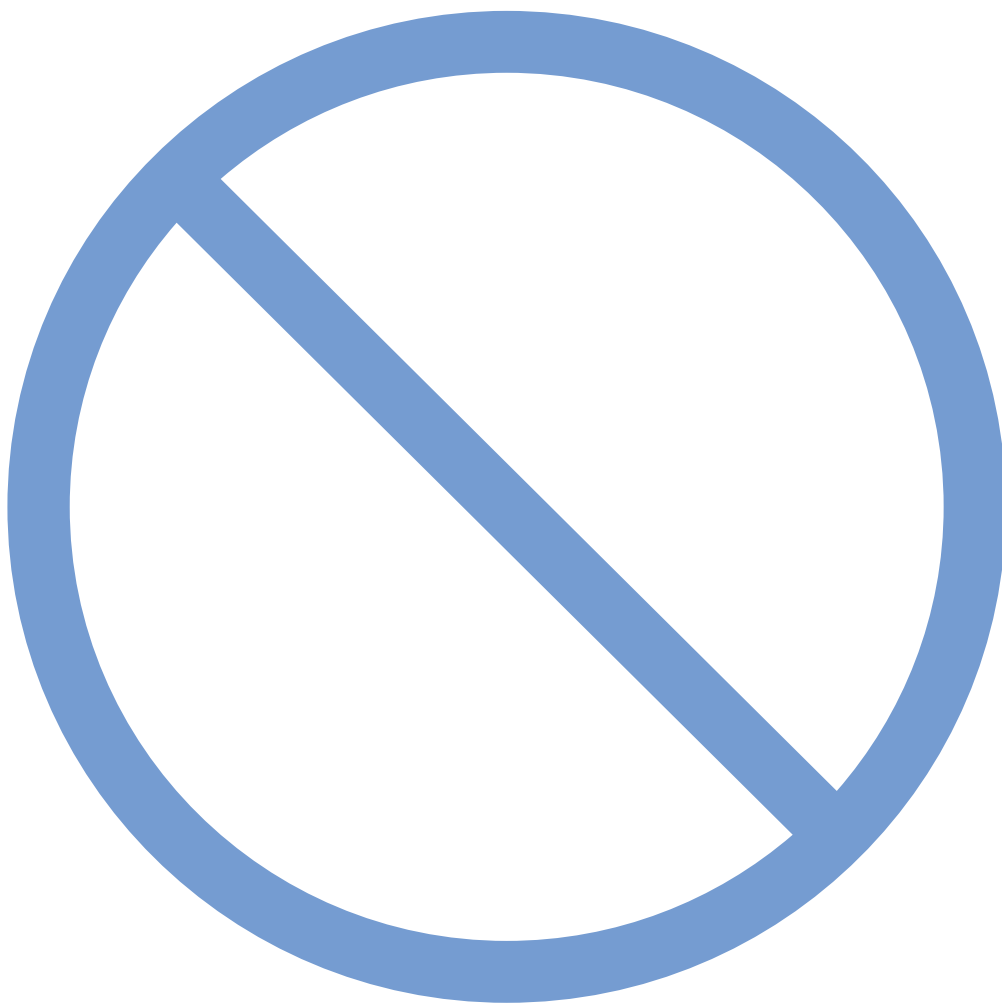
CITY STANDARD BARRIER (B618) CURB



SURMOUNTABLE STYLE CONCRETE CURB



BITUMINOUS/ASPHALT CURB



DO NOTHING

WE WANT YOUR FEEDBACK!

Share which option you would like the project team to proceed with:

- In-person at the meeting
- Online using our digital comment card
- Via the project email
- Via the project help line

WHAT'S NEXT?

Following this neighborhood meeting, the project team will summarize the feedback received and share it with City Council to make a final decision on the project. A letter will be sent to residents with more information about this council meeting once the date is set.

Another neighborhood meeting will be held in spring 2025 to share the final design and what to expect during construction.

STAY CONNECTED



Sign up for project updates on the project website to stay informed of upcoming engagement opportunities.

clients.bolton-menk.com/priorlake2025

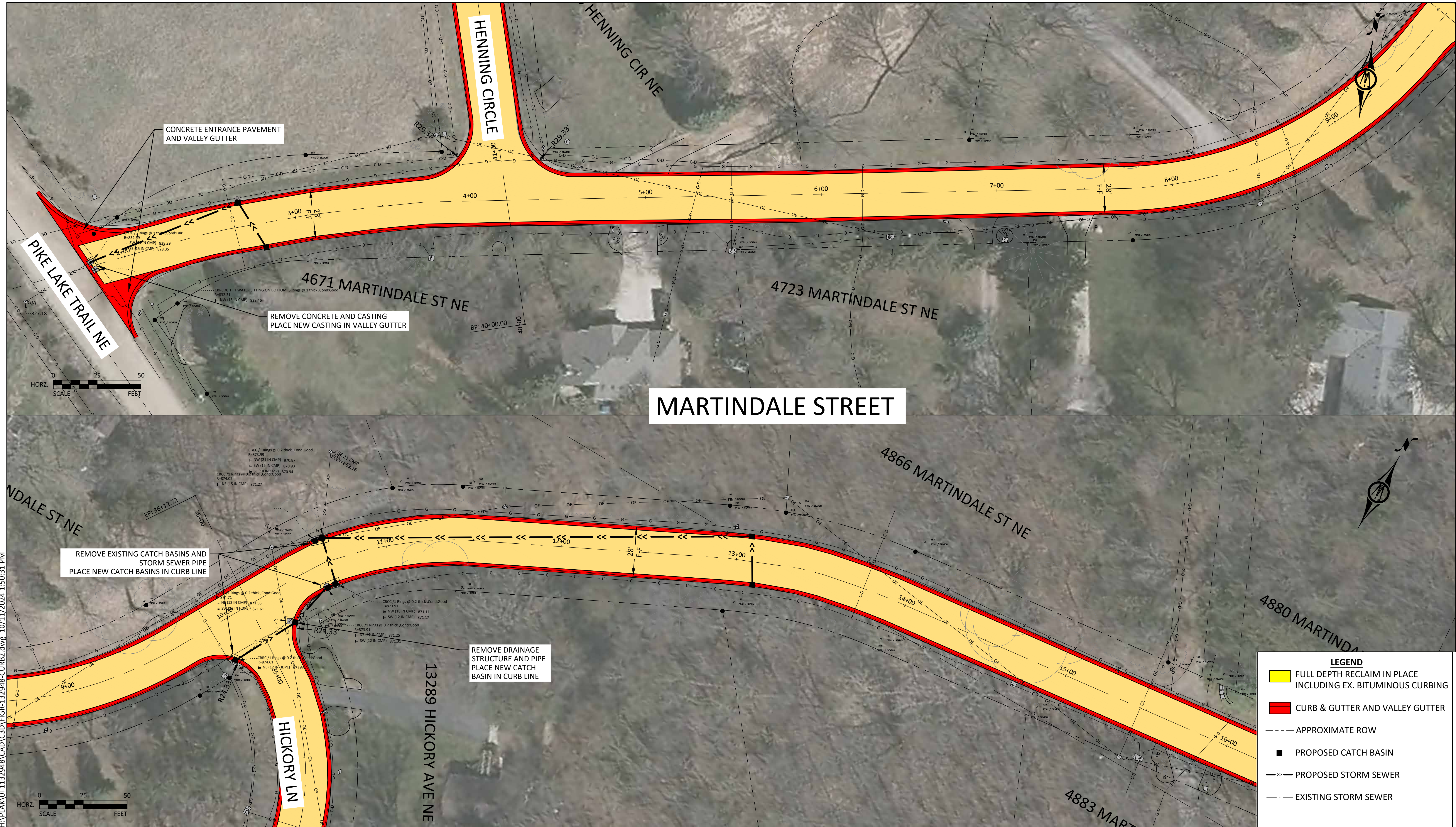


2025 Martindale/Henning/Hickory Reclamation- Concrete Curb Option

City of Prior Lake

FIGURE 1: MARTINDALE STREET

OCTOBER 2024



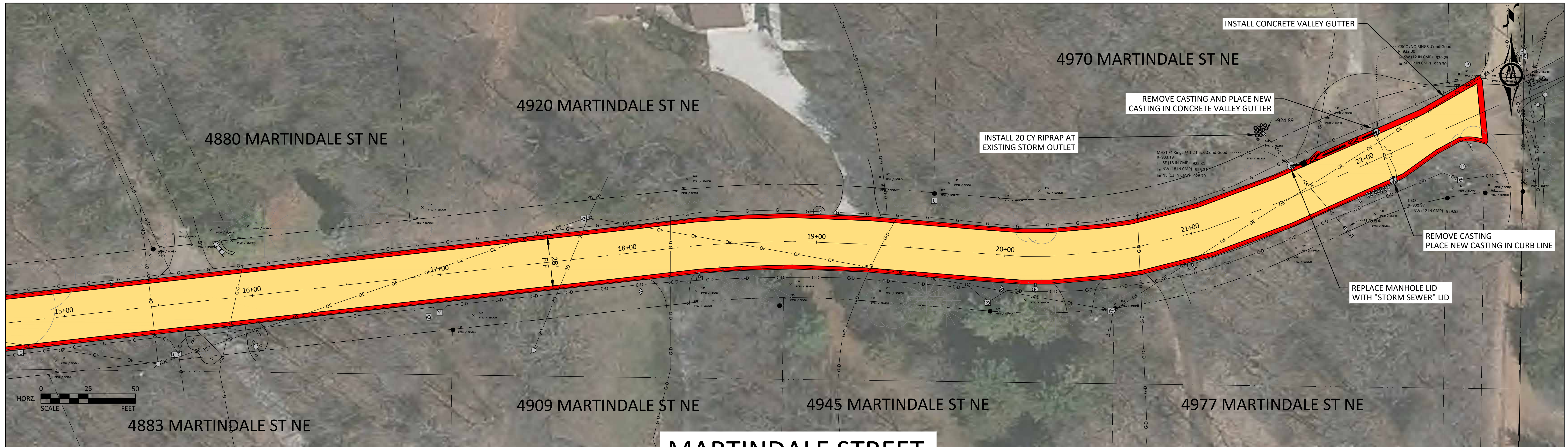


2025 Martindale/Henning/Hickory Reclamation- Concrete Curb Option

City of Prior Lake

FIGURE 2: MARTINDALE STREET

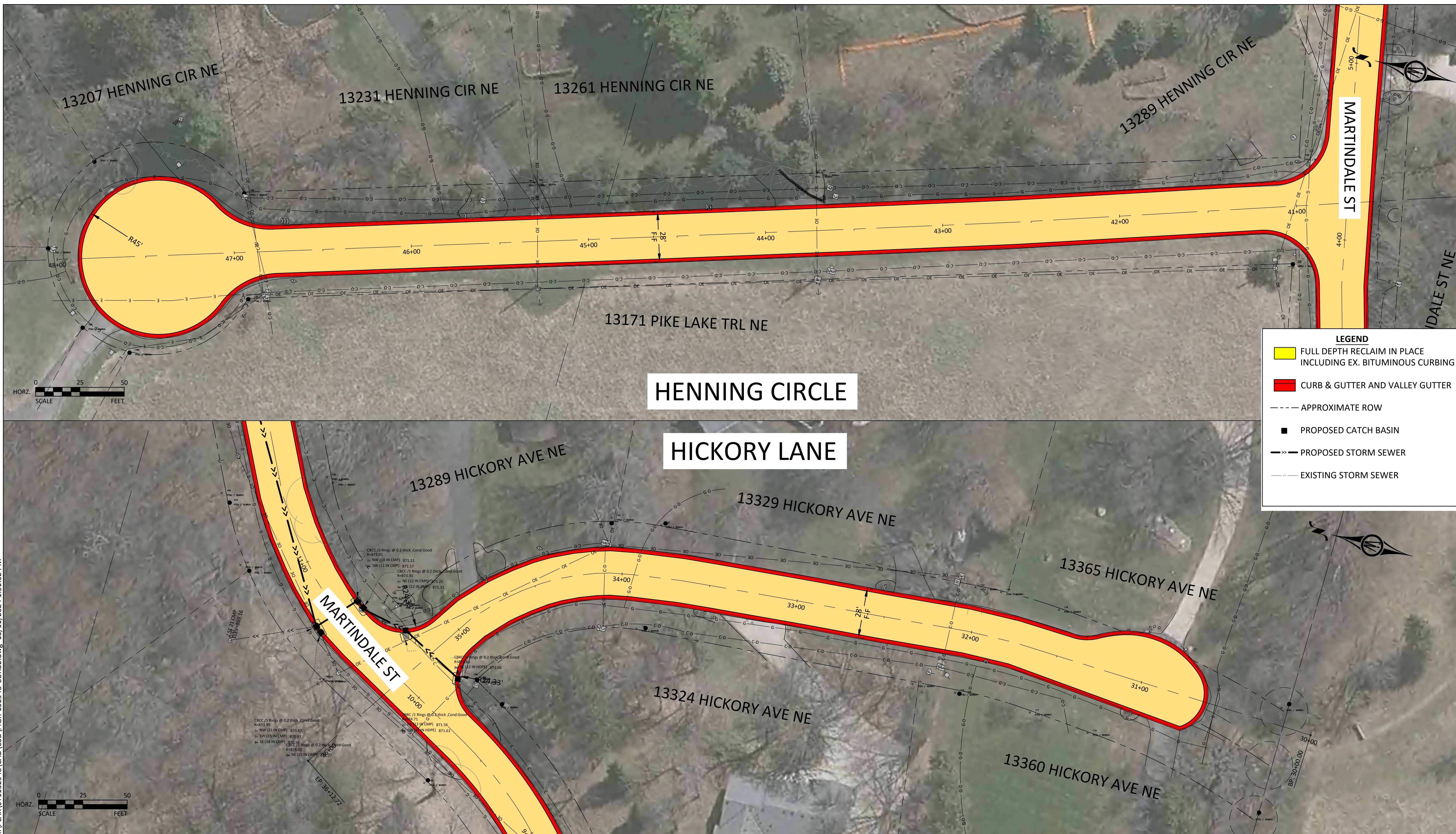
OCTOBER 2024



MARTINDALE STREET

LEGEND

- FULL DEPTH RECLAIM IN PLACE INCLUDING EX. BITUMINOUS CURBING
- CURB & GUTTER AND VALLEY GUTTER
- APPROXIMATE ROW
- PROPOSED CATCH BASIN
- >> PROPOSED STORM SEWER
- EXISTING STORM SEWER



H:\PLAK\01132948\CAD\FIGR-132948-CURB2.dwg 10/11/2024 1:51:32 PM