



VFW Prior Lake
Exterior Side- Day

Main Ave SE.
Prior Lake, MN, 55372



118 E. 26th Street Suite 300 Minneapolis, MN 55404
P:612-879-8225 F:612-879-8152

www.tanek.com

scale: NTS
issued 10/21/2020



VFW Prior Lake
Front Entry- Day

Main Ave SE.
Prior Lake, MN, 55372



118 E. 26th Street Suite 300 Minneapolis, MN 55404
P:612-879-8225 F:612-879-8152

www.tanek.com

scale: NTS
issued 10/21/2020

a-2



VFW Prior Lake
Exterior North - Day

Main Ave SE.
Prior Lake, MN, 55372

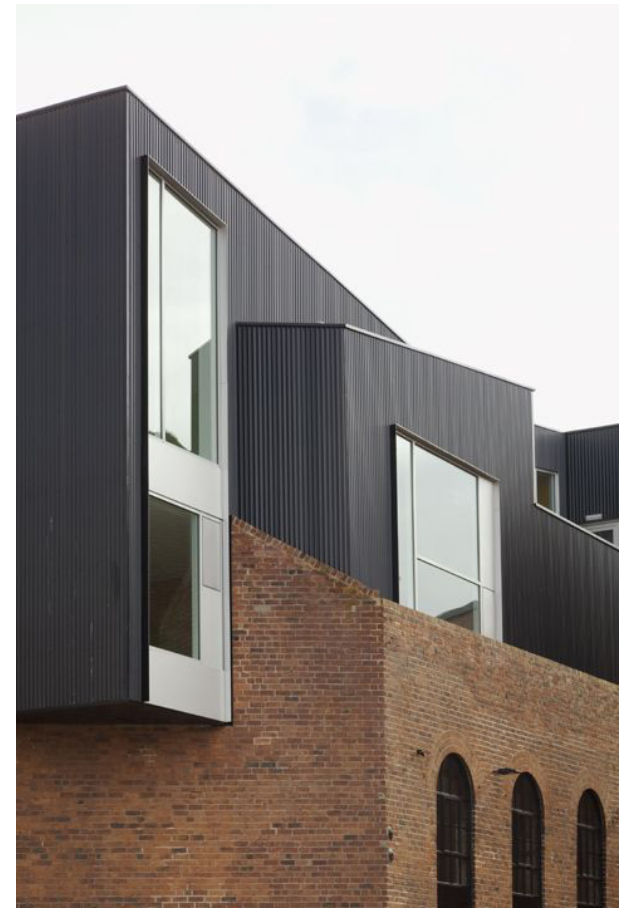


118 E. 26th Street Suite 300 Minneapolis, MN 55404
P:612-879-8225 F:612-879-8152

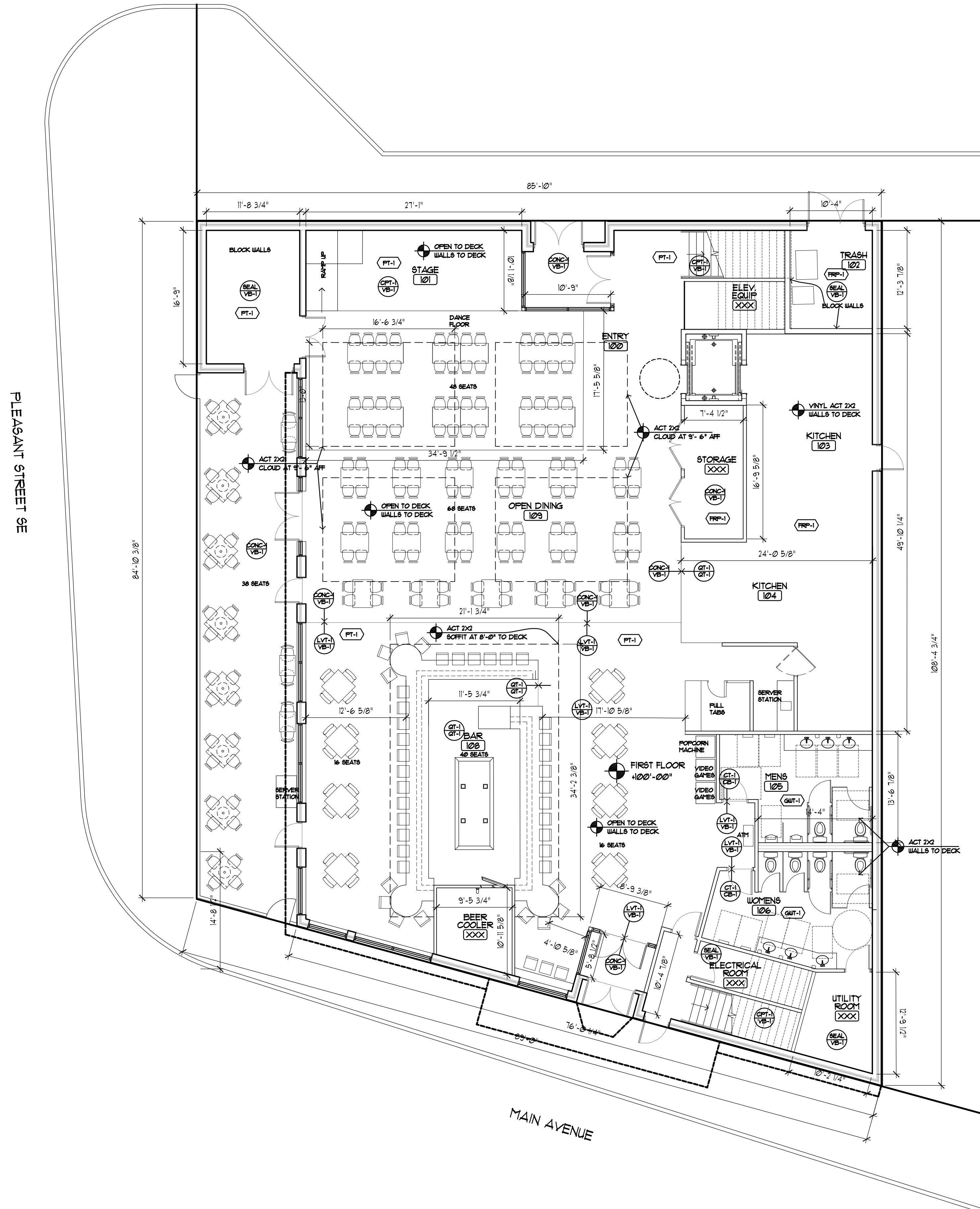
www.tanek.com

scale: NTS
issued 10/21/2020

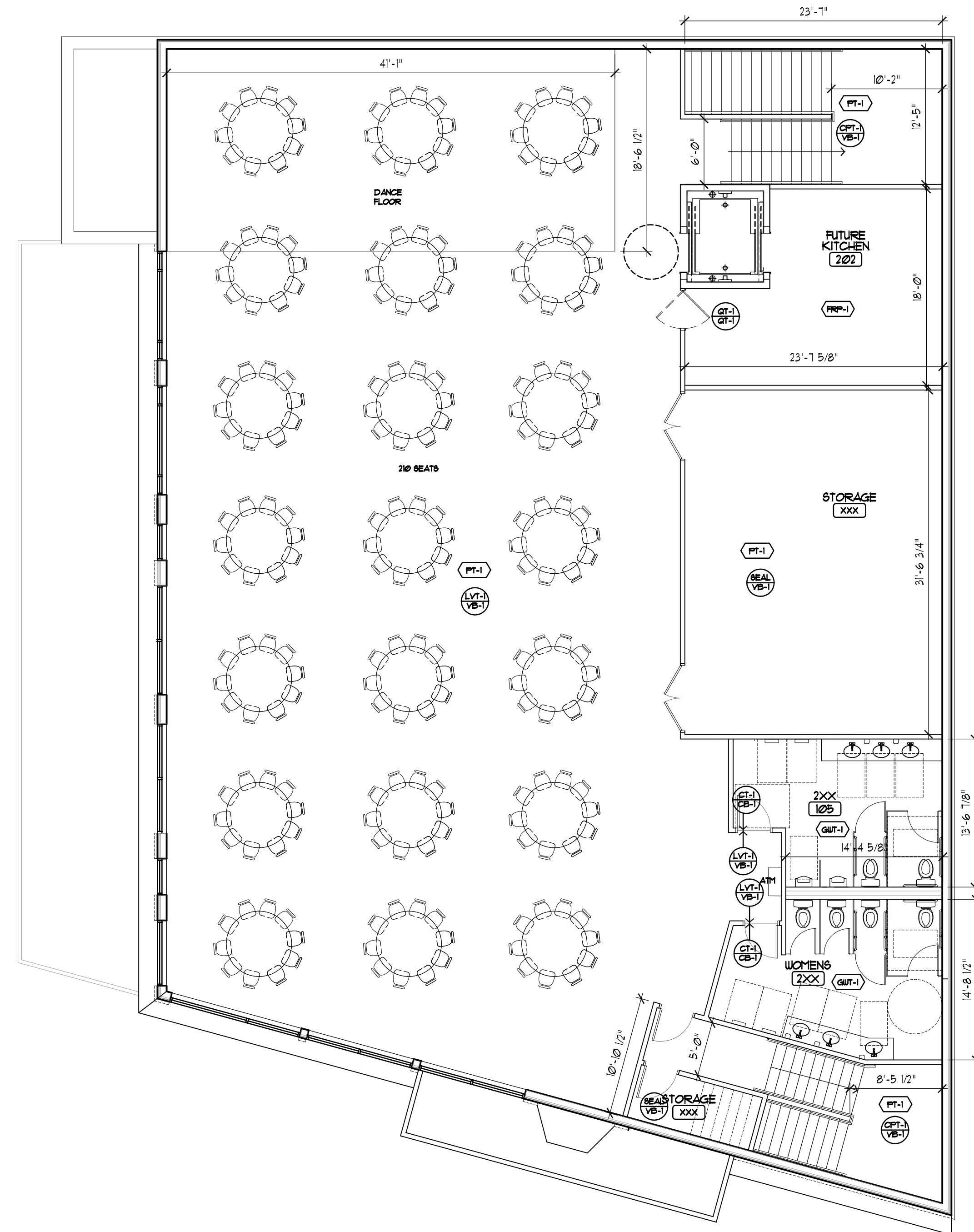
a-3



*NOT TO BE USED WITHOUT THE PERMISSION OF TANEK ARCHITECTS AND STANLEY & WENCL, LLC CONSTRUCTION & FACILITY SERVICES



1 ARCHITECTURAL FLOOR PLAN - FIRST FLOOR
1/8"=1'-0"



2 ARCHITECTURAL FLOOR PLAN - SECOND FLOOR
1/8"=1'-0"



118 E. 26th Street
Suite 300
Minneapolis, MN 55404
P:612-879-8225
F:612-879-8152

www.tanek.com

project
VFW Prior Lake

16302 Main Ave.
Prior Lake, MN 55372

general contractor



I hereby certify that this plan, specification or report was prepared by me or under my direct supervision and that I am a duly licensed architect under the laws of the state of Minnesota.

Nathaniel Shea xx.xx.2020

name date

24515

license number signature

scale AS NOTED
name cr/jrc

issued for pricing 04.27.2020

Floor Plans

a100

copyright Tanek 2020