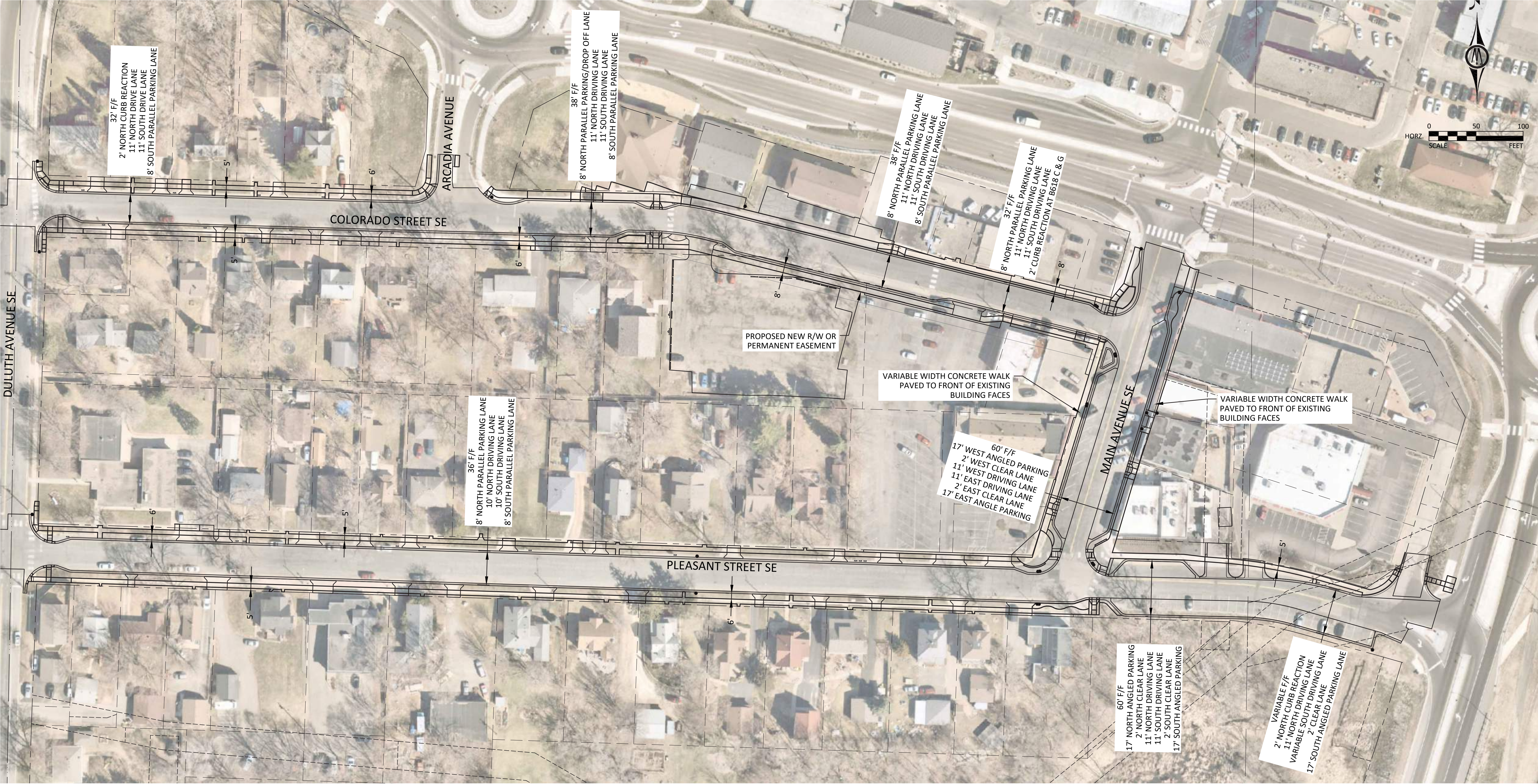


Roadway FINAL DESIGN



Streetscape ELEMENTS

Lighting



Planter Curbs & Walls



Wayfinding Kiosk



Specialty Pavement



Site Furnishings



Boulder Details



Opportunities for Public Art



Several existing streetscape elements from Downtown Prior Lake can be incorporated into the Downtown South Reconstruction.

The material choices and intersection bumpouts provide opportunities to incorporate streetscape elements that ring out the special character of downtown Prior Lake.

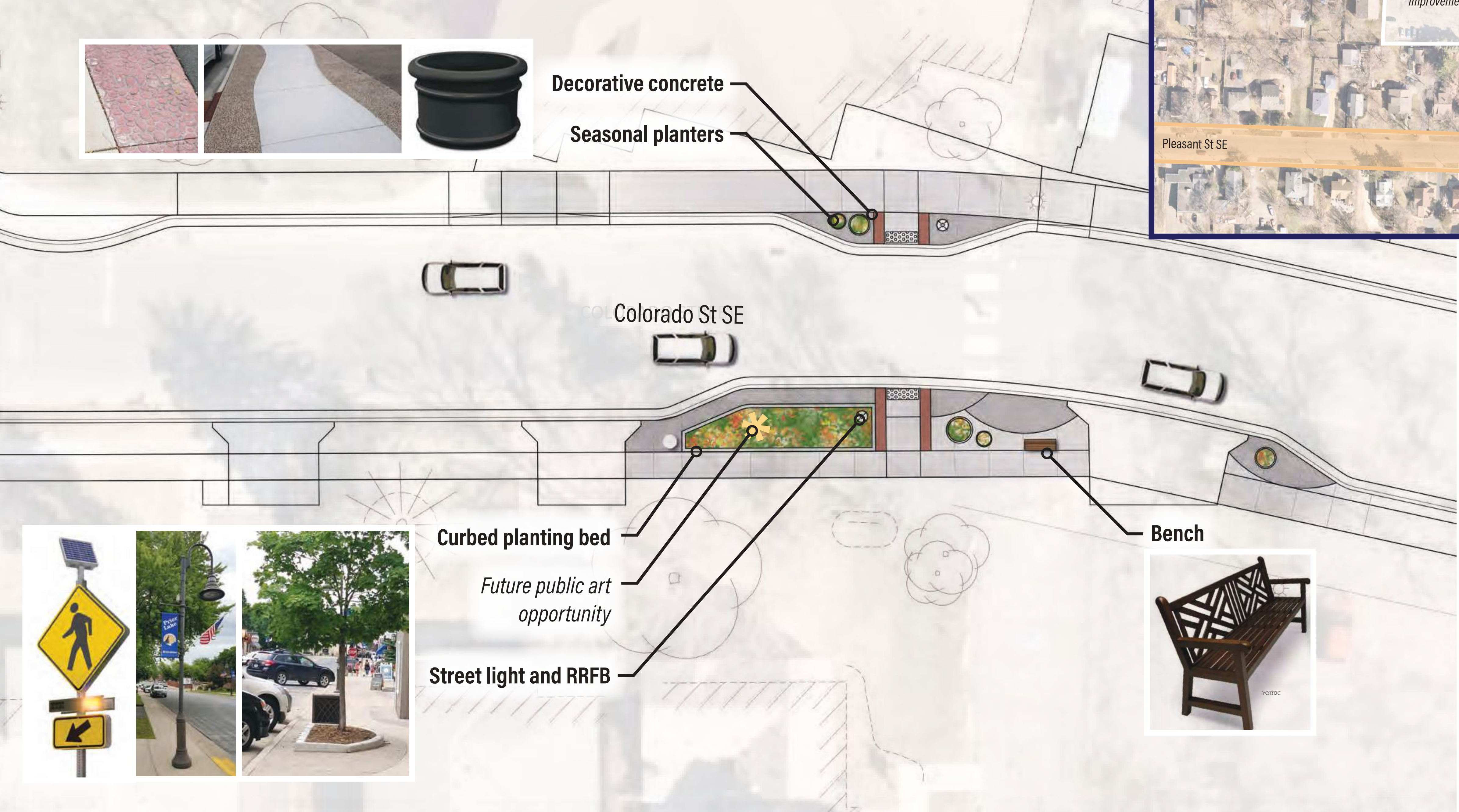
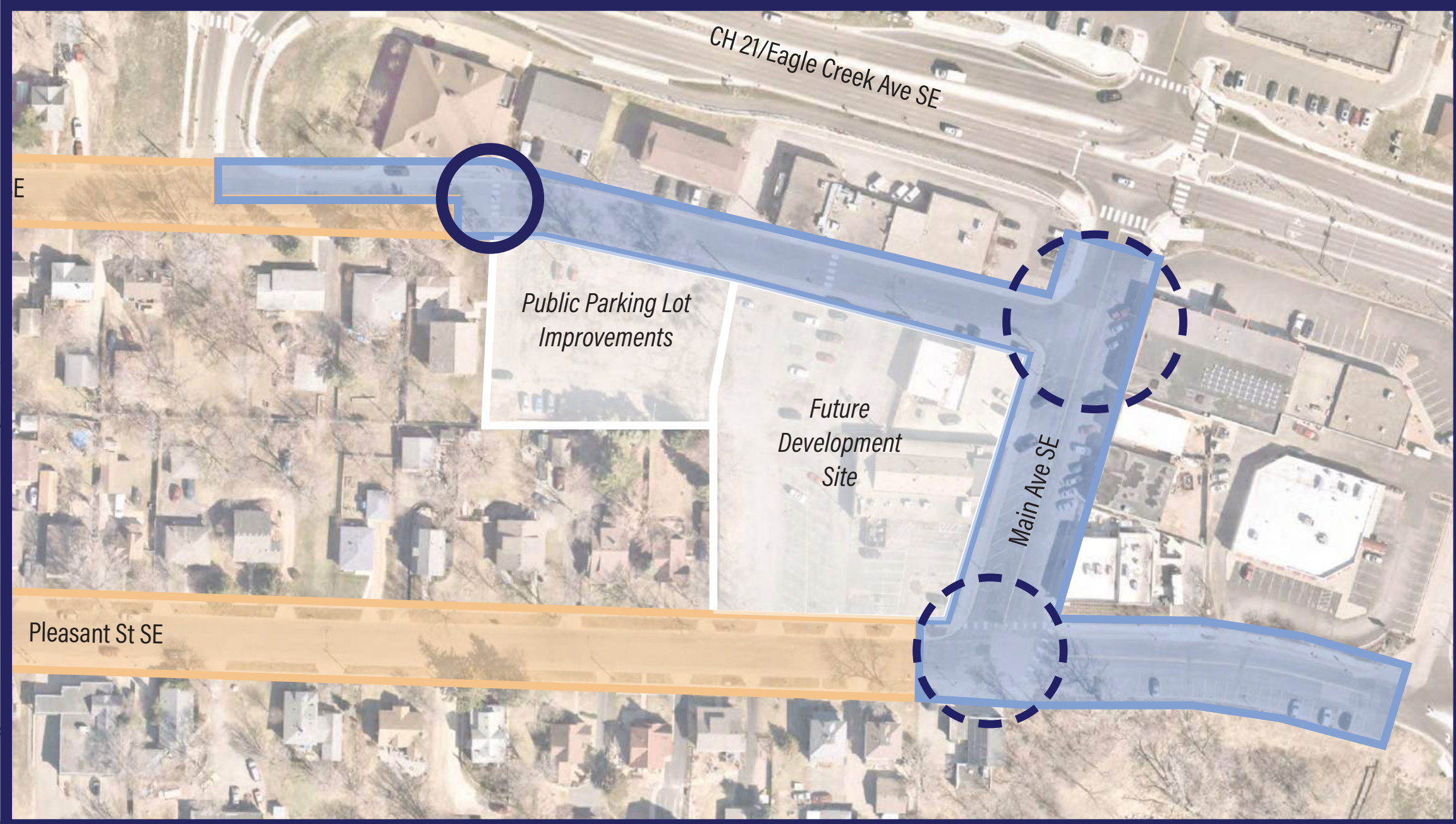
A "typical" streetscape treatment generally includes:

- » Concrete walks
- » Intersection lighting
- » Grass boulevard

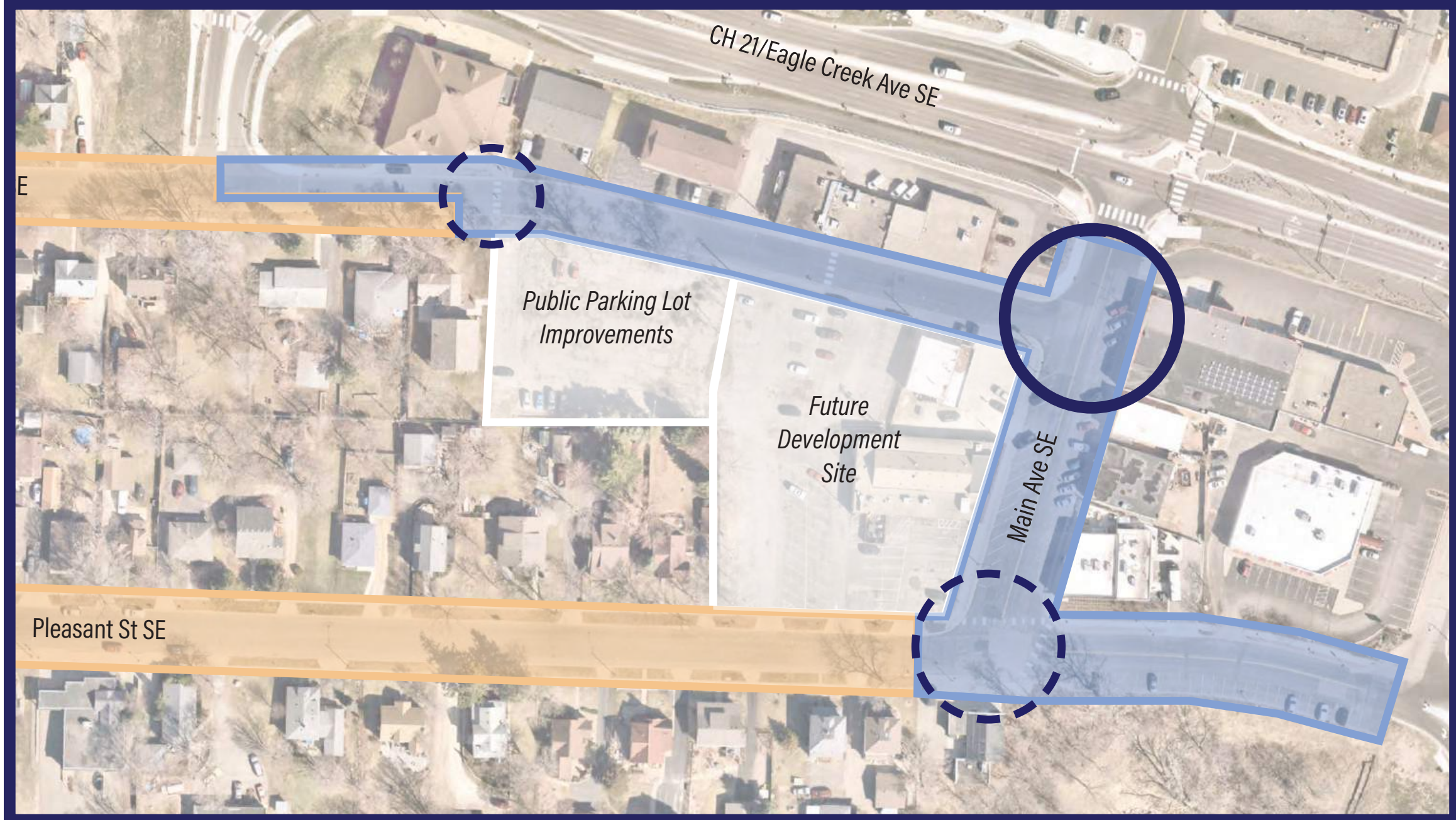
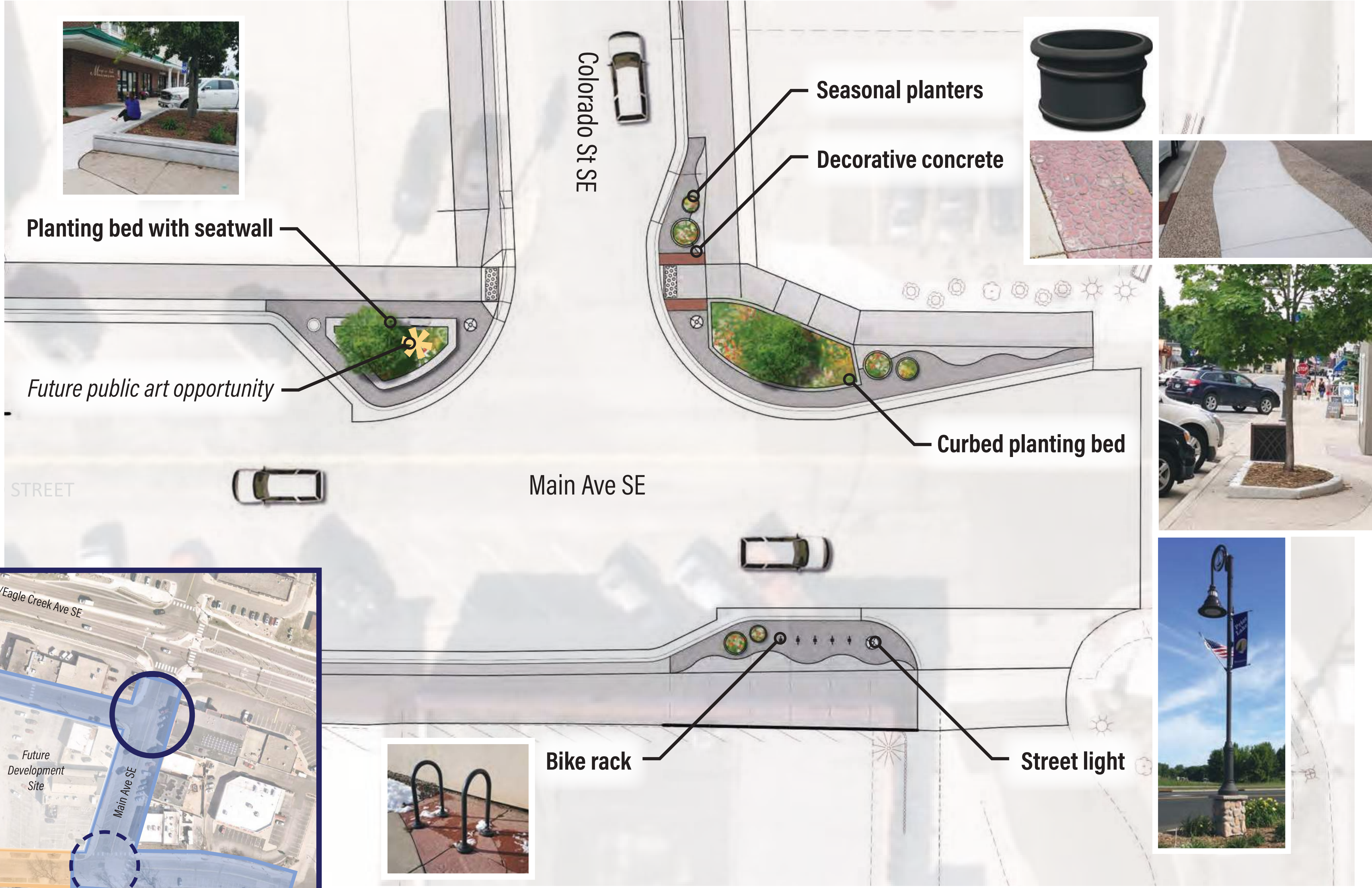
Consideration for adding elements to this treatment include:

- » Sight lines & safety
- » Utilities
- » Construction costs
- » Ongoing maintenance

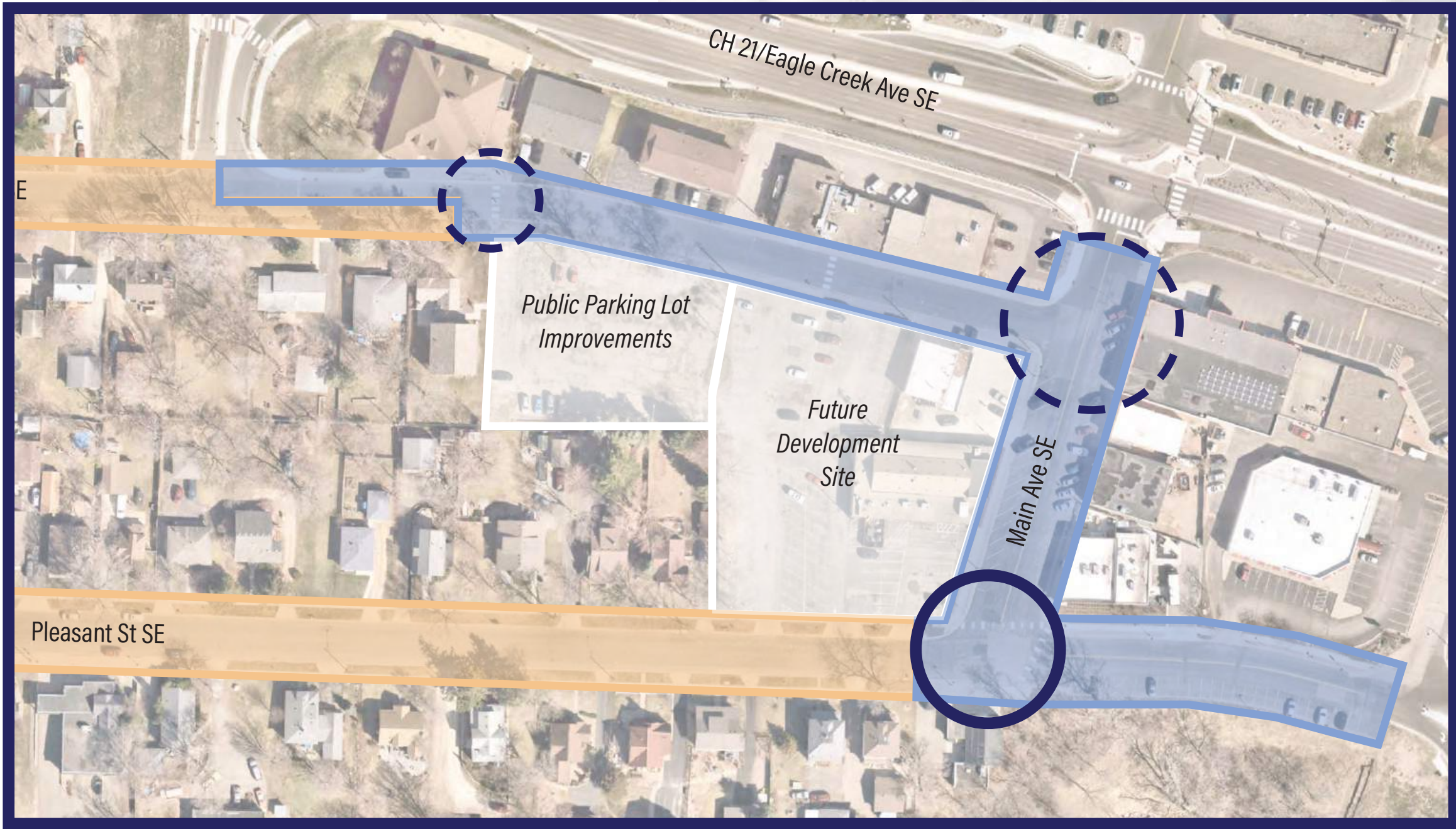
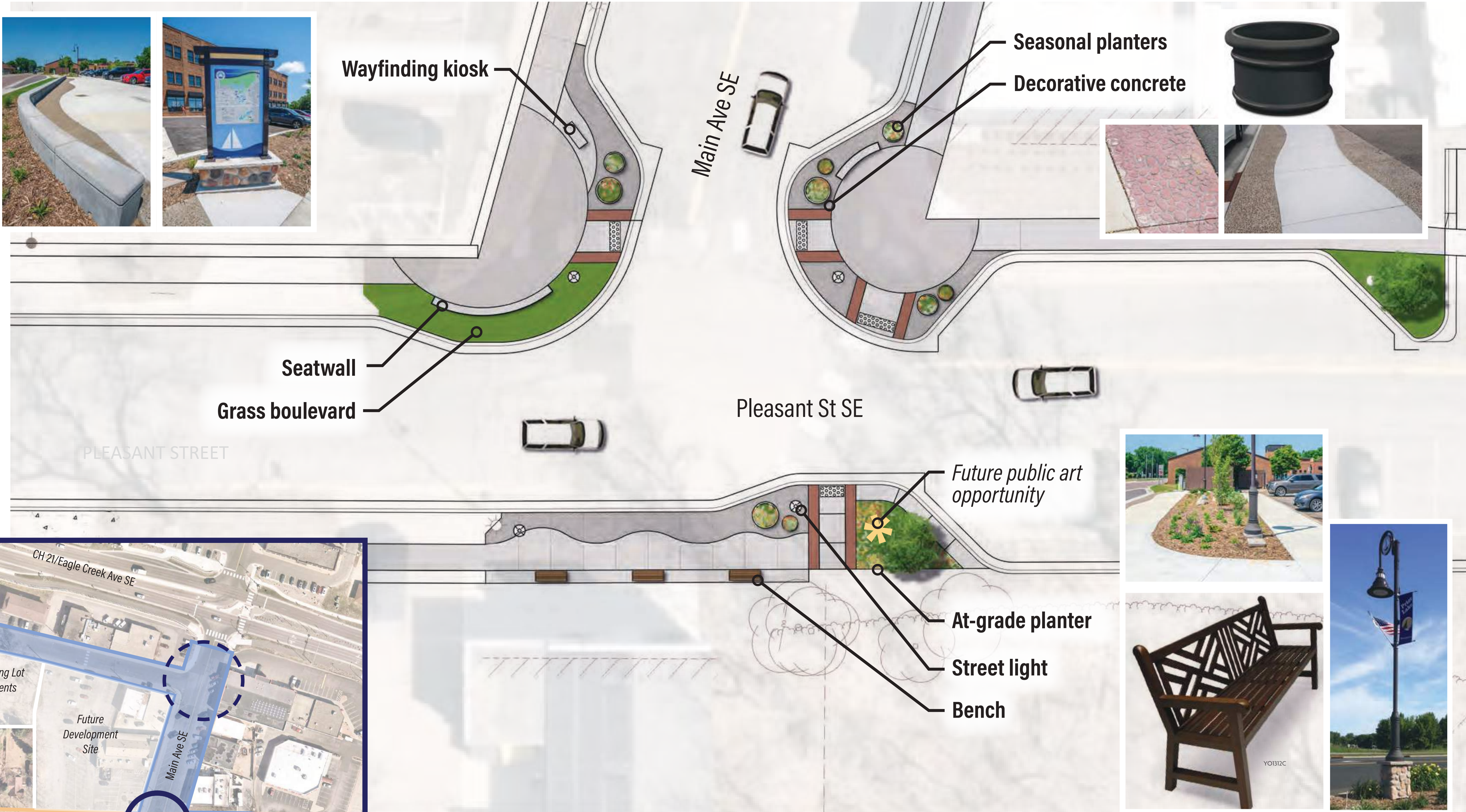
Colorado Street Mid-Block Crossing **STREETSCAPING**



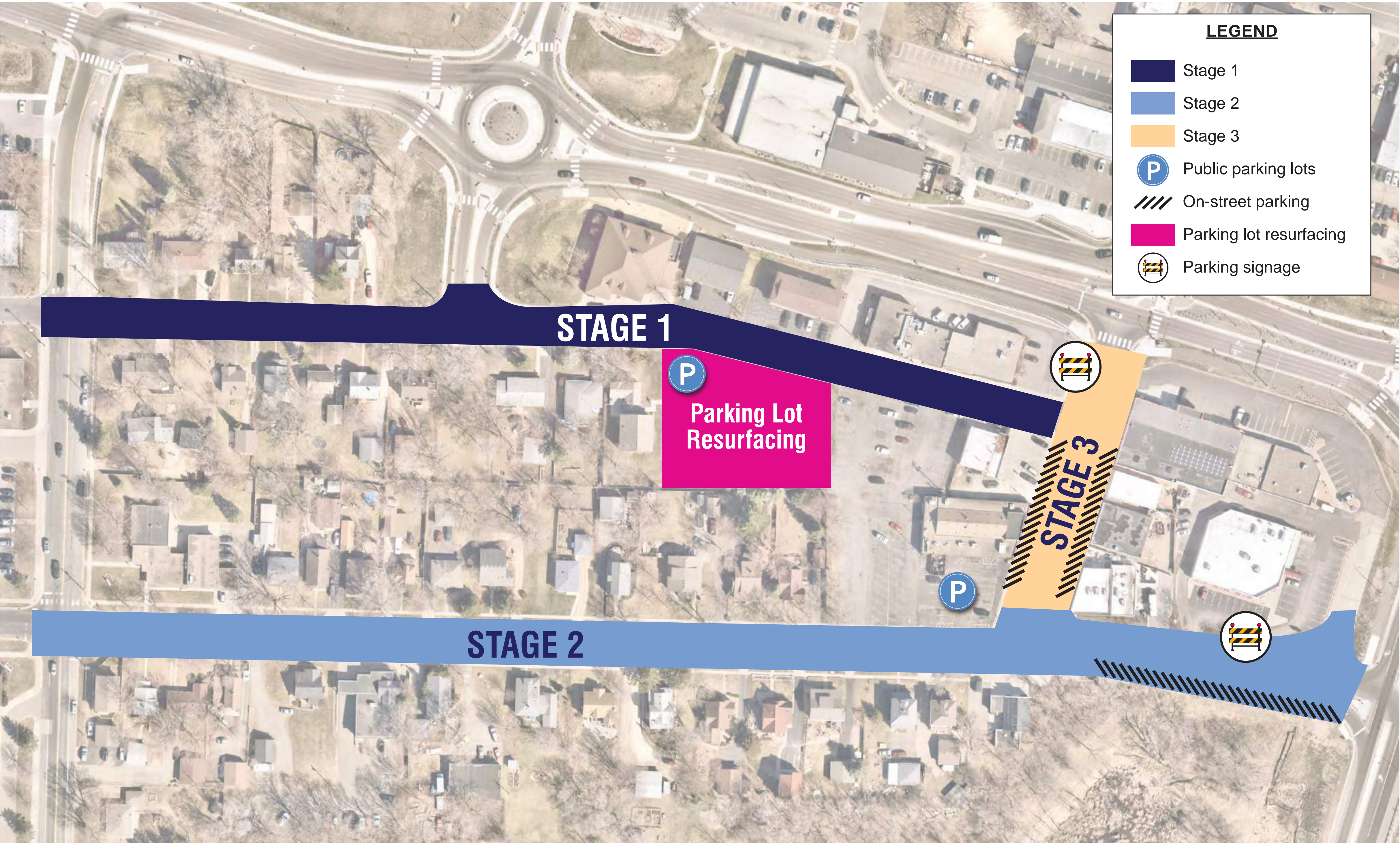
Main Avenue / Colorado Street Crossing **STREETSCAPING**



Pleasant Street / Main Avenue Crossing **STREETSCAPING**



Proposed CONSTRUCTION STAGING



Public Parking Availability

Signs identifying locations of available lot and on-street parking will be placed at the two locations indicated on the map.

Access to public parking lots will be maintained off either Colorado Street or Pleasant Street at all times. On-street parking will also be available on either Main Avenue or Pleasant Street throughout construction, except during concrete curing.

The public parking lot off Colorado Street will be resurfaced during the construction of this project. This resurfacing will not take place while Colorado Street is under construction.

Business Access

Access to the businesses east of Main Avenue will be maintained off either Main Avenue or Pleasant Street at all times.