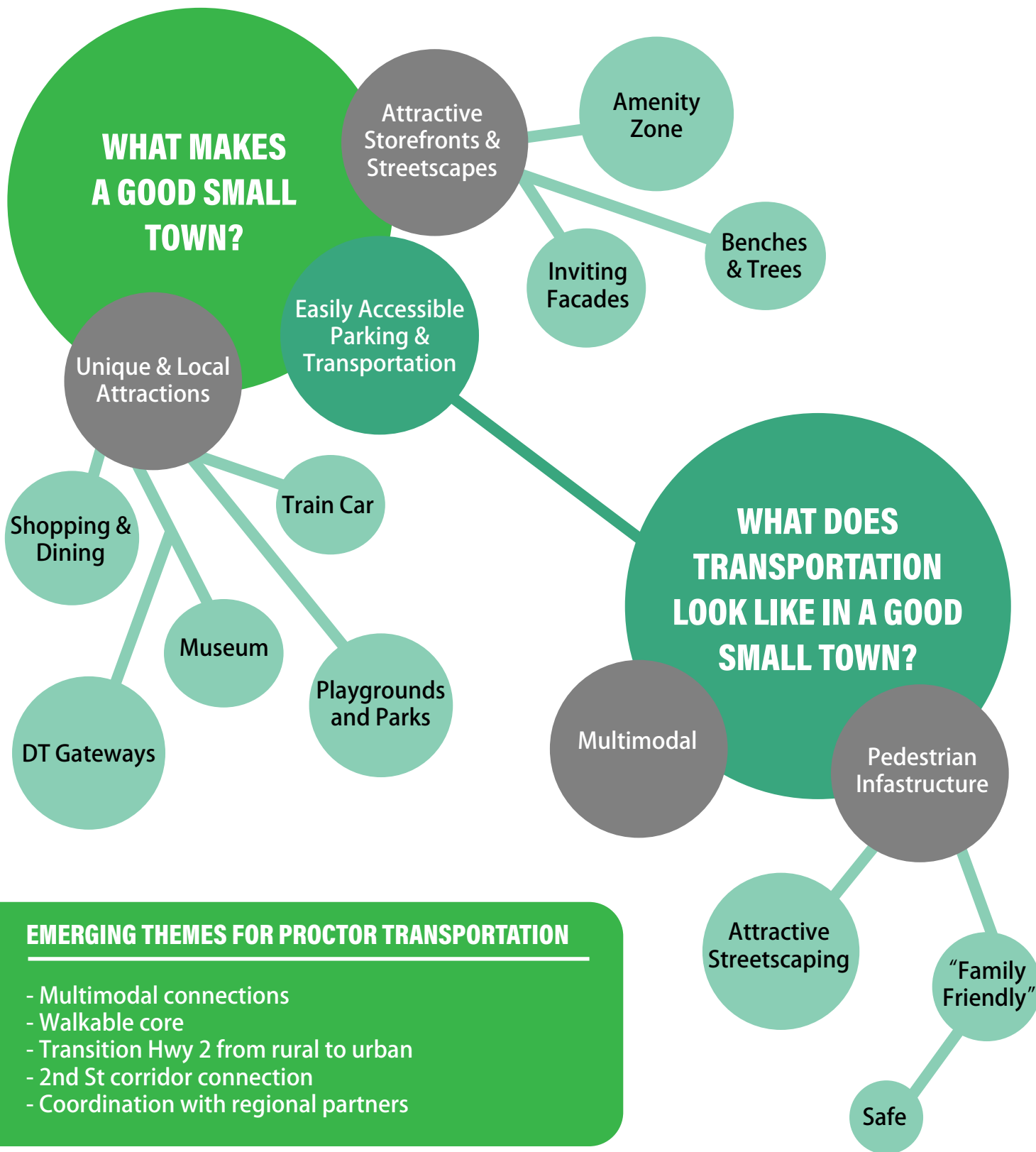




Proctor TRANSPORTATION PLAN

STEERING COMMITTEE ENGAGEMENT MEETING

THURSDAY, JUNE 4, 2020, VIRTUAL MEETING

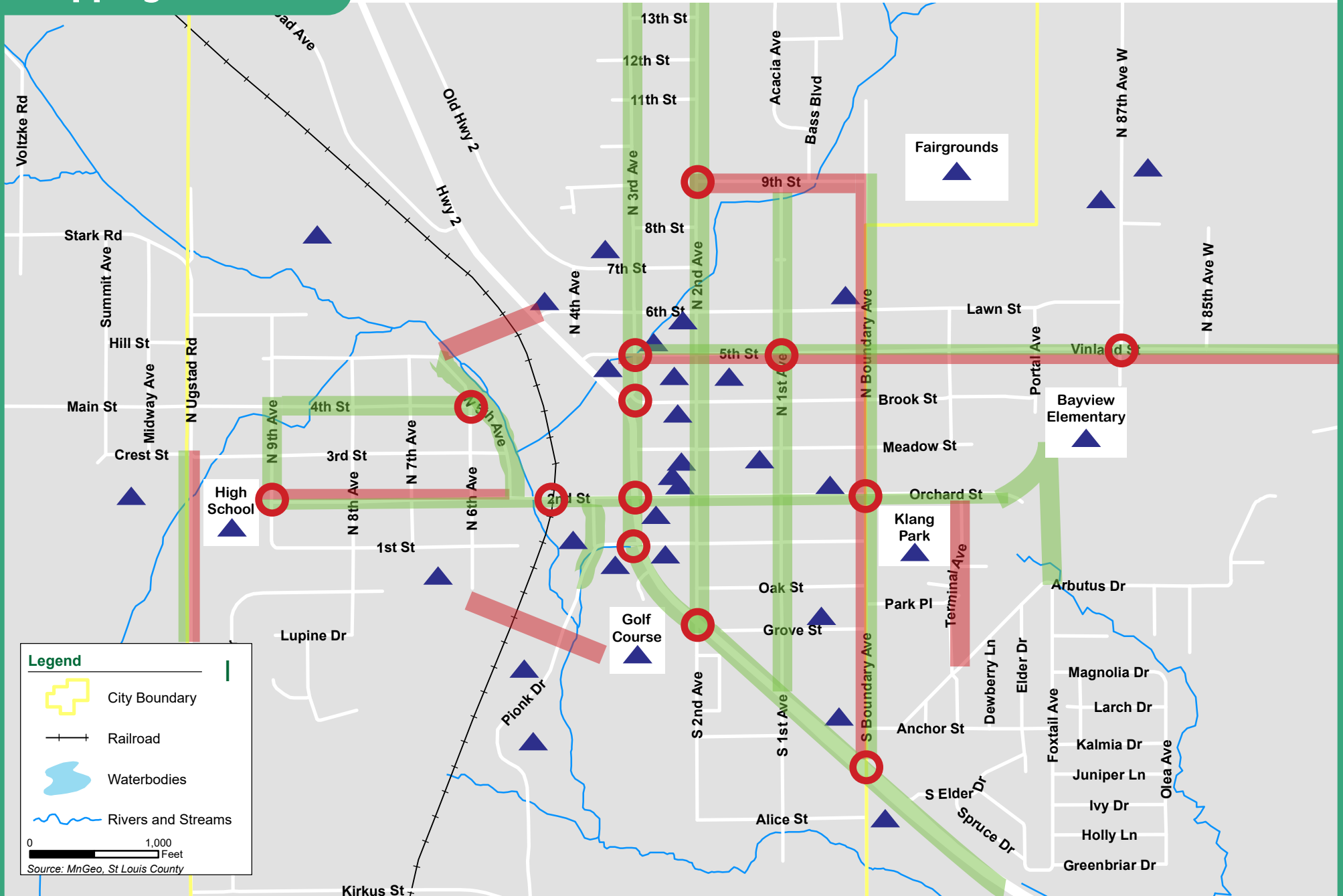


EMERGING THEMES FOR PROCTOR TRANSPORTATION

- Multimodal connections
- Walkable core
- Transition Hwy 2 from rural to urban
- 2nd St corridor connection
- Coordination with regional partners

Downtown Mapping Comments

- - Challenging areas/issues
- - Challenging/issue intersections
- - Routes
- ▲ - Destinations



Legend

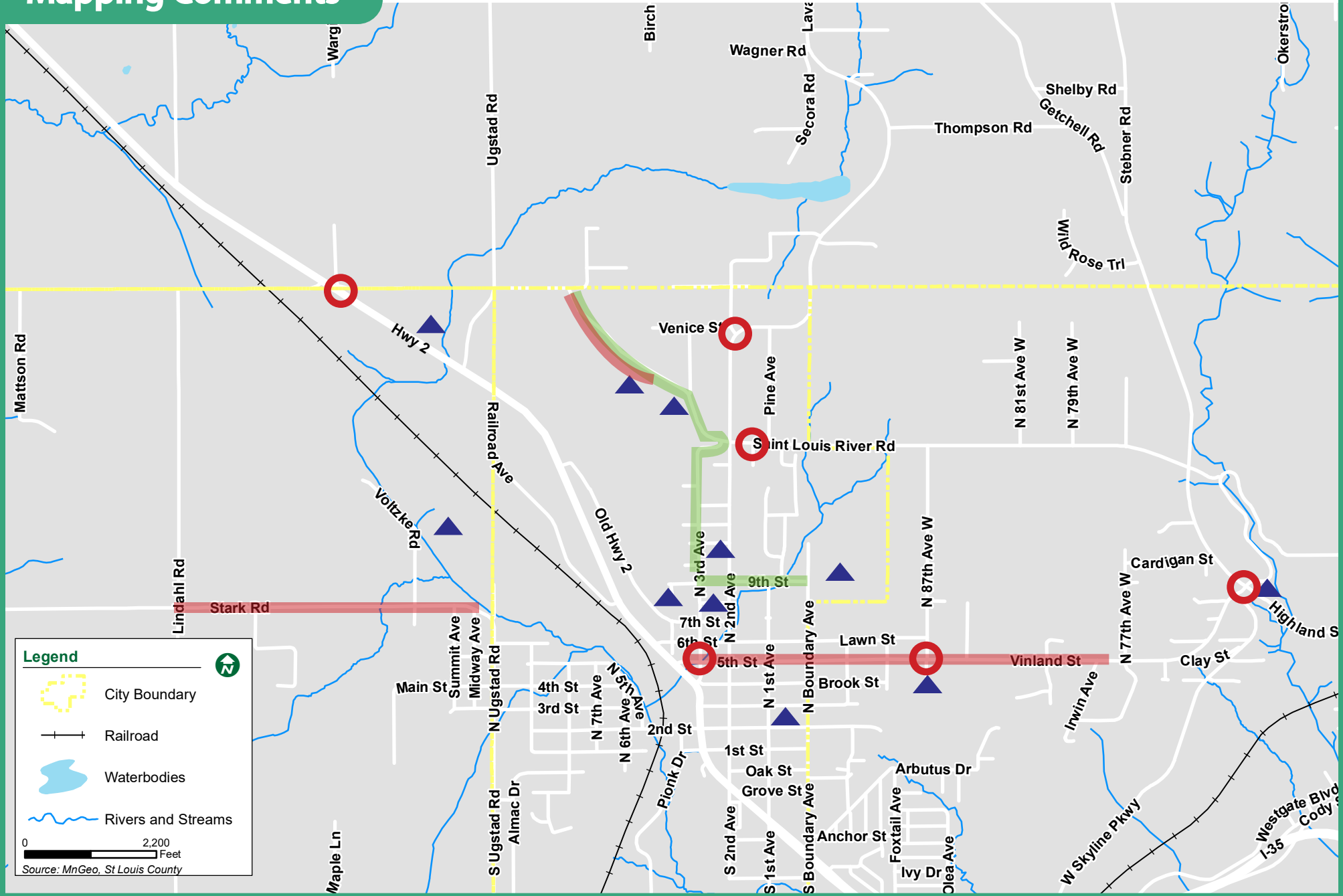
- City Boundary
- Railroad
- Waterbodies
- Rivers and Streams

0 1,000 Feet

Source: MnGeo, St. Louis County

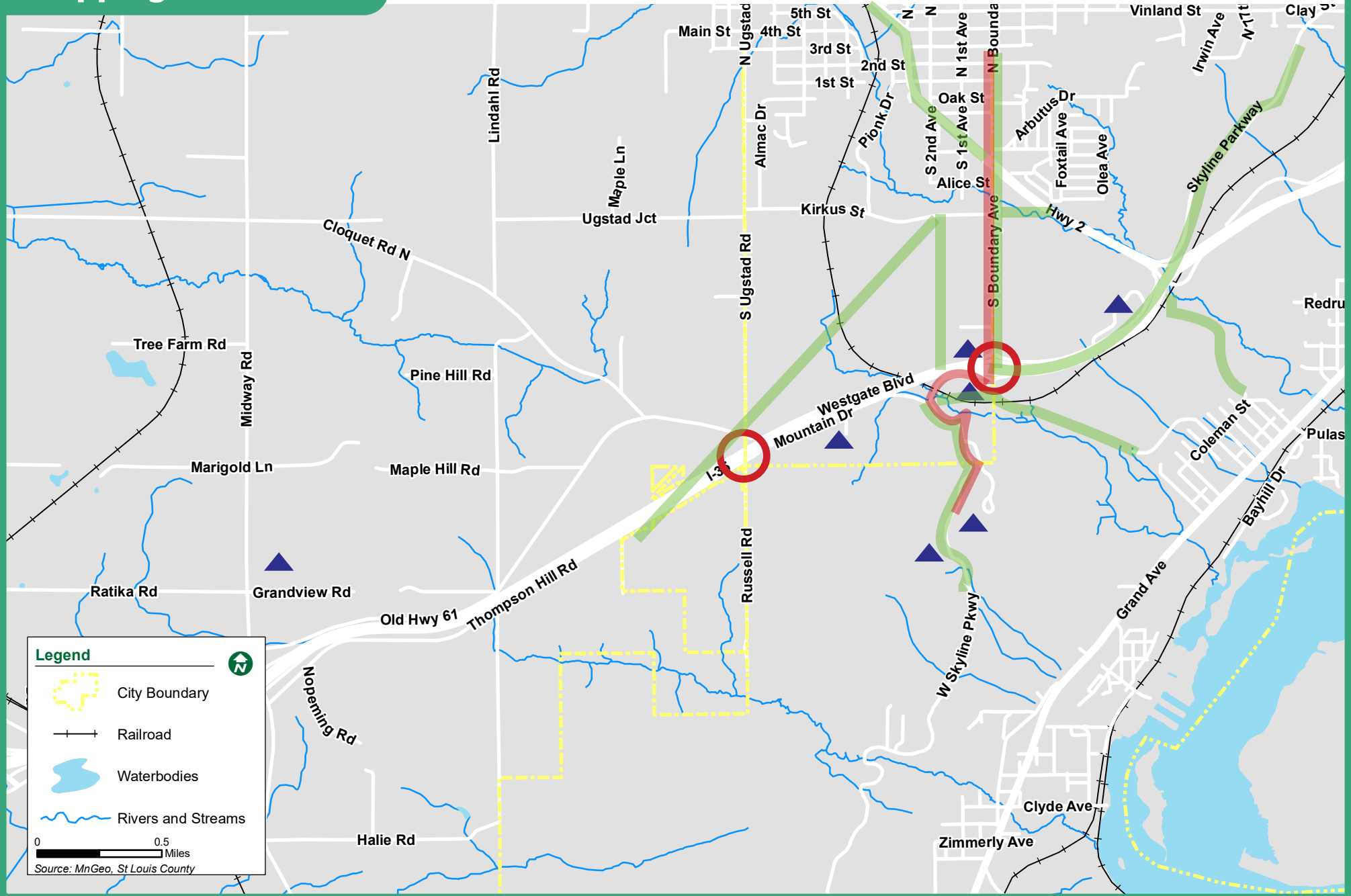
North Proctor Mapping Comments

- - Challenging Areas/Issues
- - Challenging/Issue Intersections
- - Routes
- ▲ - Destinations



South Proctor Mapping Comments

- - Challenging Areas/Issues
- - Challenging/Issue Intersections
- - Routes
- ▲ - Destinations



Legend

- City Boundary
- Railroad
- Waterbodies
- Rivers and Streams

0 0.5 Miles

Source: MnGeo, St Louis County