

## Appendix B: Relevant Developments



Anoka County  
MINNESOTA

Respectful. Innovative. Fiscally Responsible



**BOLTON  
& MENK**

Real People. Real Solutions.



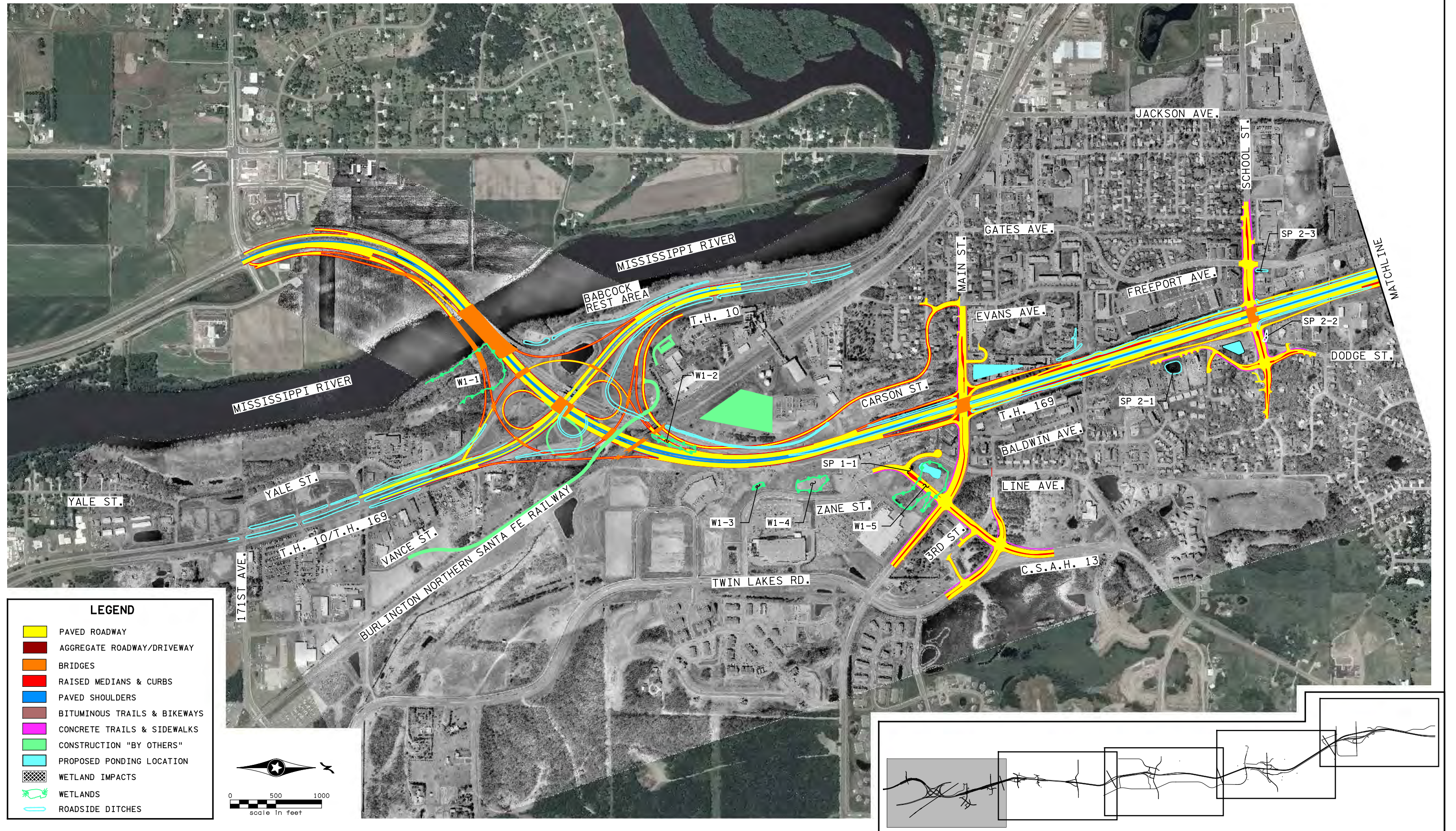


- LEGEND**
- PAVEMENT
  - CURB AND GUTTER
  - SHOULDER
  - BIOWALK/ TRAIL
  - LANDSCAPE
  - SCENERY
  - PROPOSED
  - EXISTING
  - TRAIL PROJECT IN 2019
  - CLOSURE
  - CONSTRUCTION LIMITS
  - SIGNAL
  - RETAINING
- ALL DIMENSIONS LISTED INCLUDE 10% TOLERANCE. APPROX. 2" USED FOR ESTIMATION.





n:\projects\5689\HI-MU\Graphics\FIGURES\CP710673\_Fig01.dgn



**PROPOSED IMPROVEMENTS / WETLAND IMPACTS**  
ENVIRONMENTAL ASSESSMENT  
T.H. 169 - SP 7106-73

**Figure 4A**



H:\Projects\15669\HI-MU\Graphics\FIGURES\CP710673\_Fig02.dgn

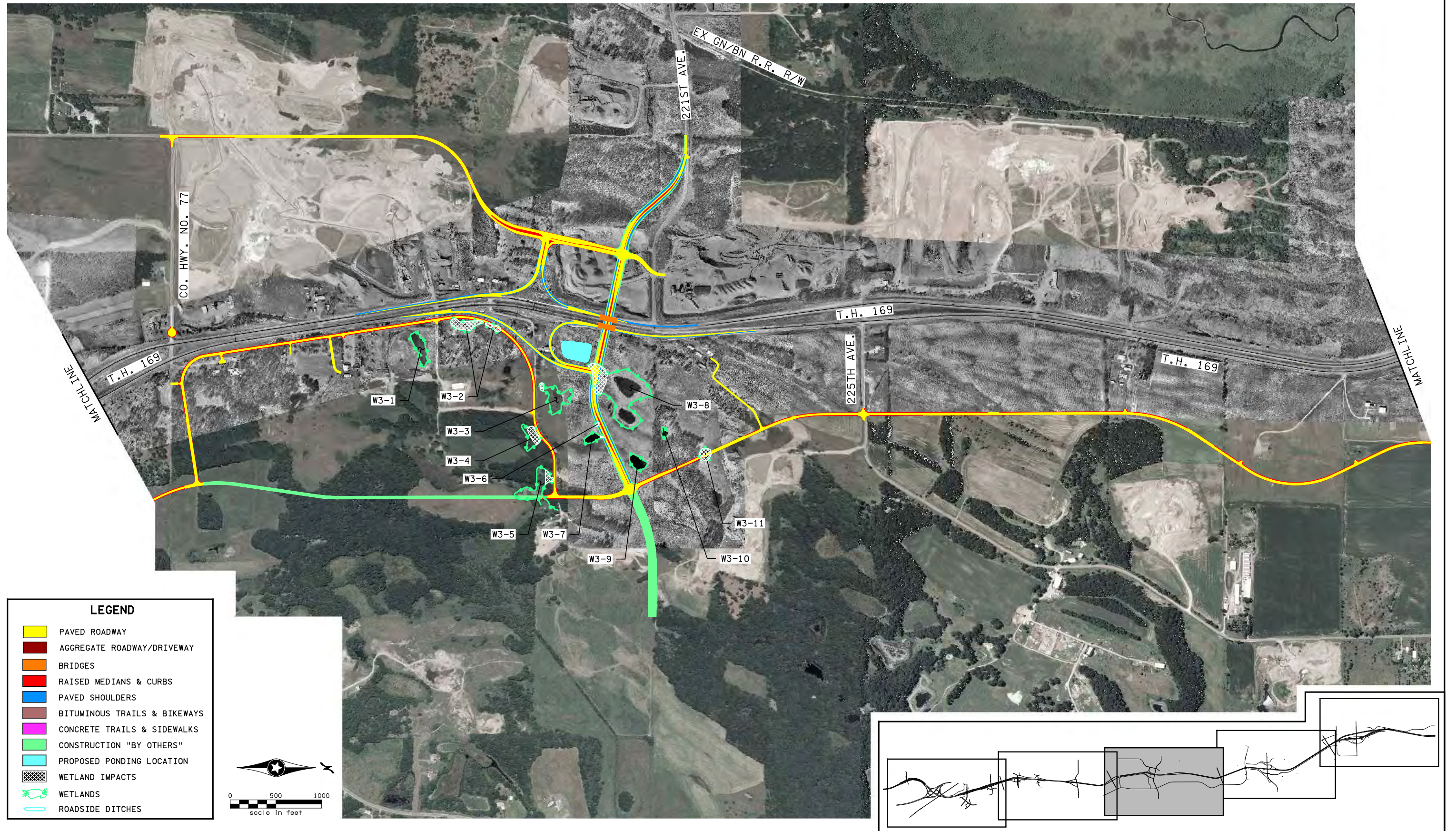


**PROPOSED IMPROVEMENTS / WETLAND IMPACTS**  
ENVIRONMENTAL ASSESSMENT  
T.H. 169 - SP 7106-73

**Figure 4B**



H:\Projects\5669\HI-MU\Graphics\FIGURES\CP710673\_Fig03.dgn



**PROPOSED IMPROVEMENTS / WETLAND IMPACTS**  
ENVIRONMENTAL ASSESSMENT  
T.H. 169 - SP 7106-73

**Figure 4C**



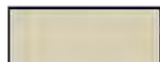
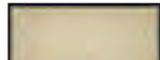

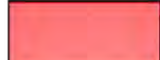



**Regional Mississippi Skyway Multiuse Trail Bridge**


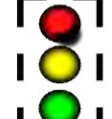







## DEVELOPMENT STATUS

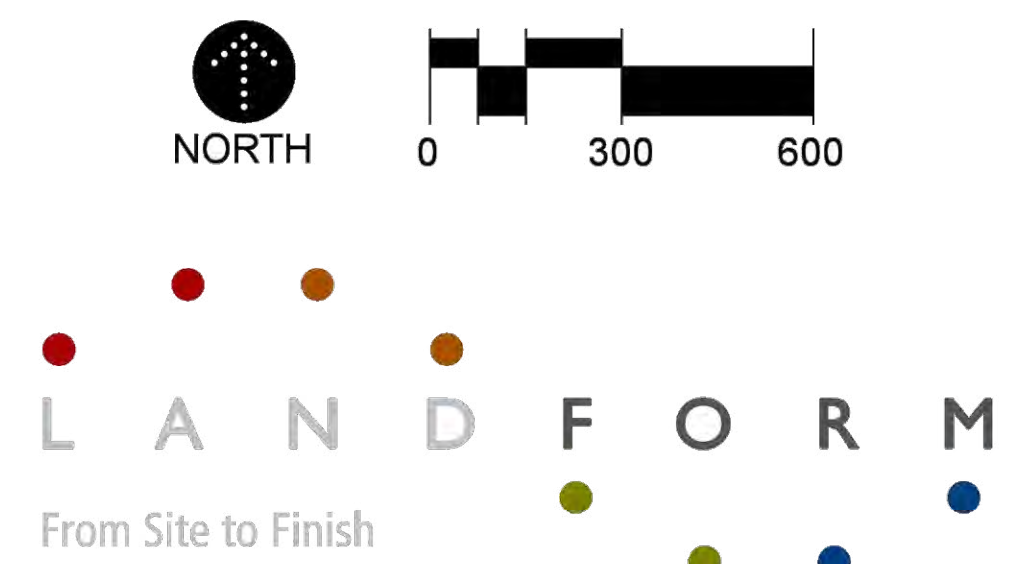
-  EXISTING DEVELOPMENT
-  PROPOSED DEVELOPMENT
-  ACTIVE DEALS
-  UNDER CONTRACT
-  COMPLETED

## ACCESS

-  EXISTING SIGNALIZED INTERSECTION
-  FUTURE SIGNALIZED INTERSECTION
-  FULL INTERSECTION
-  NO LEFT OUTBOUND MOVEMENTS
-  PARKING RAMP

## TRAFFIC INFORMATION

ADT INFORMATION TAKEN FROM 2009 ACTUAL COUNTS AND 2030 PROJECTED VOLUMES



DEVELOPMENT  
PLAN 6.0

05.15.2012