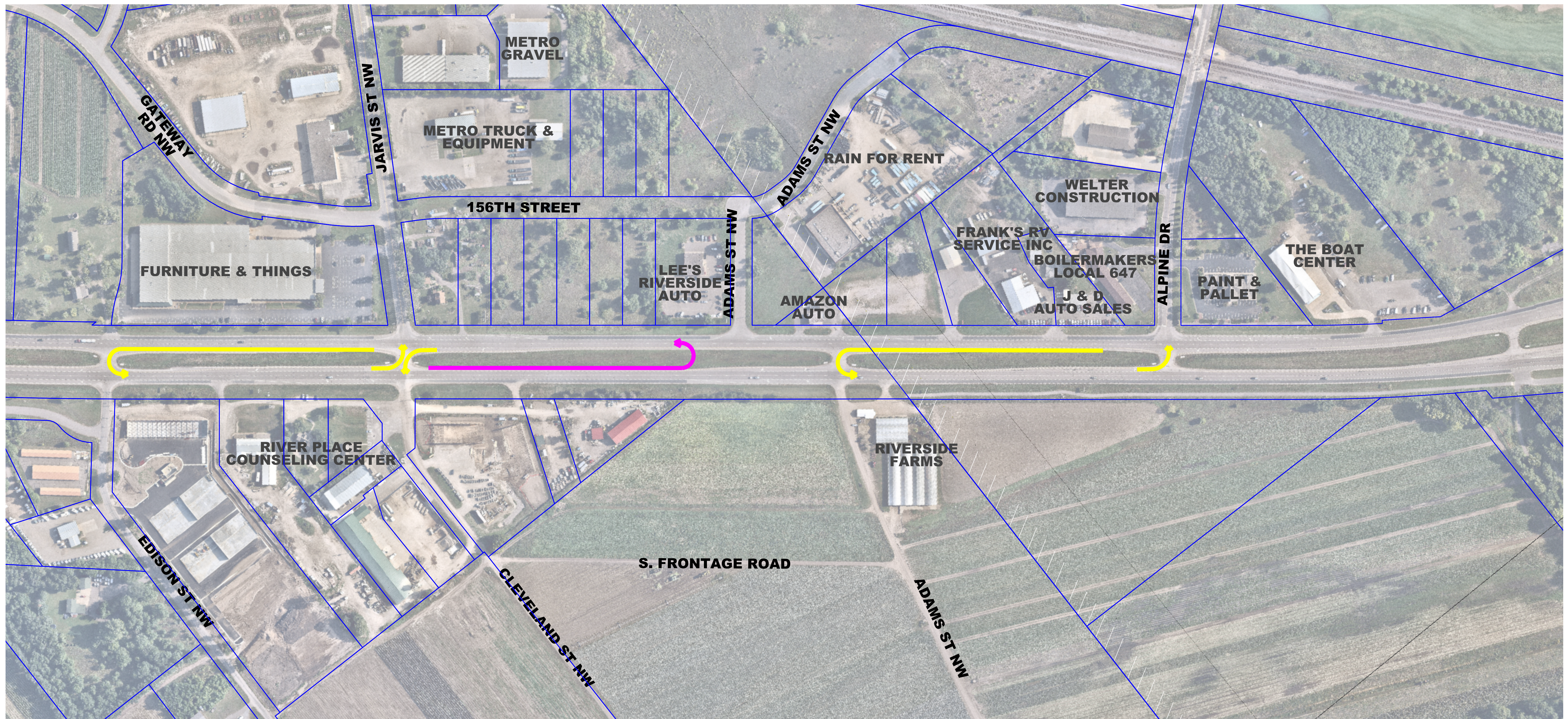


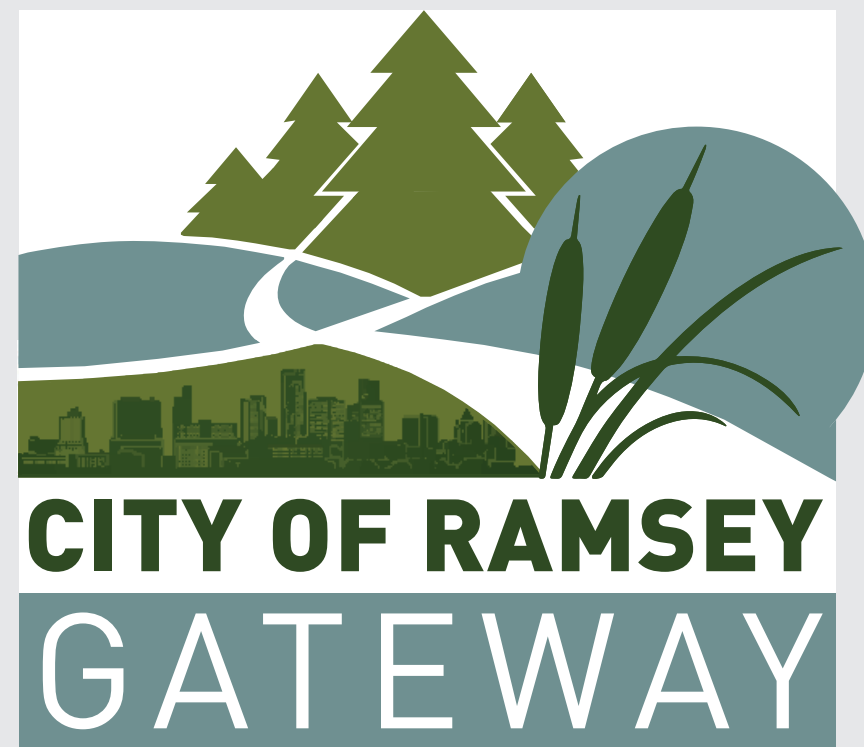
WEST END AREA

JARVIS STREET & ALPINE DRIVE



INTERIM OPTION - UNSIGNALIZED RCUT





WEST END AREA

JARVIS STREET & ALPINE DRIVE

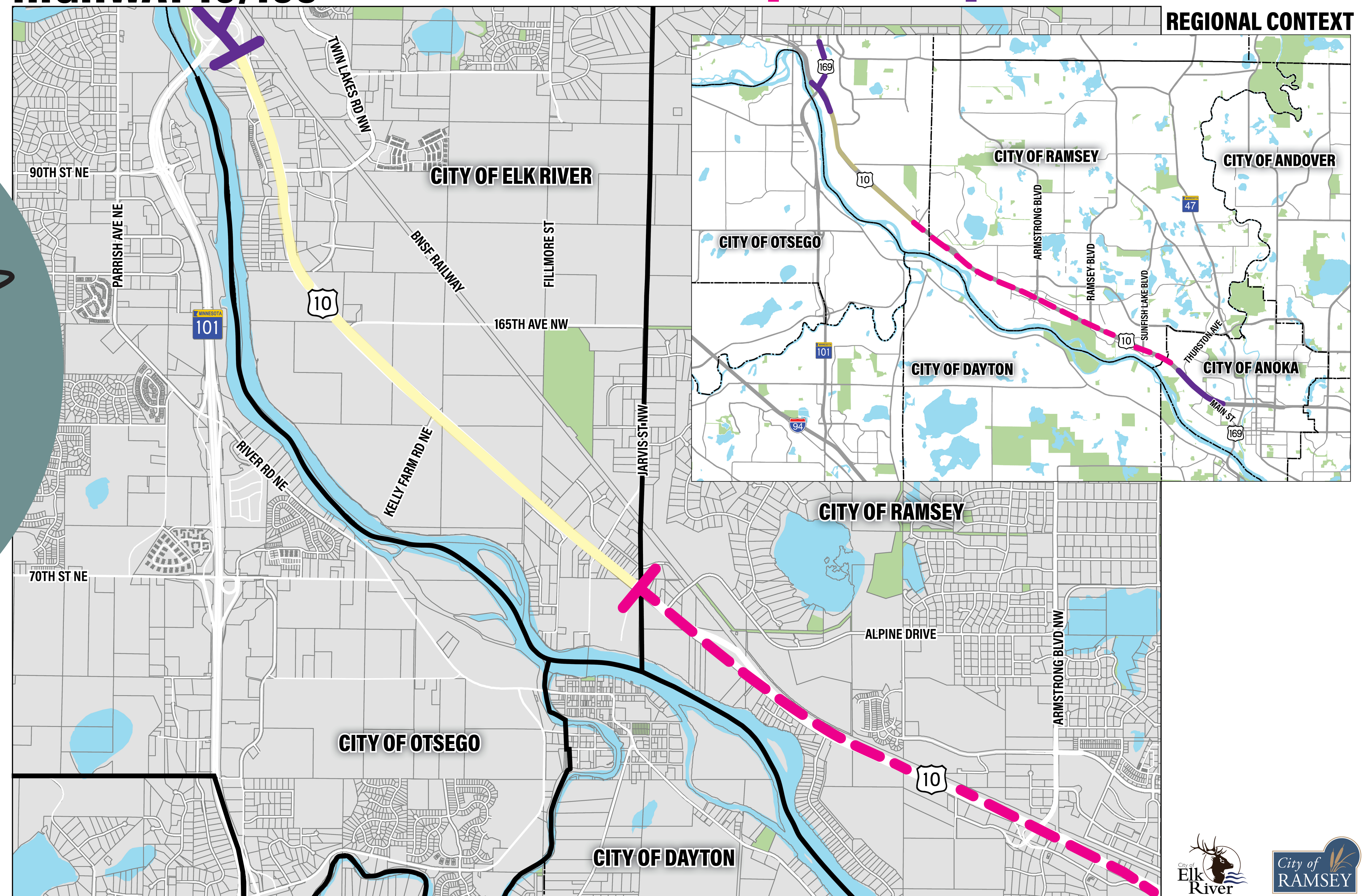


Anoka County
MINNESOTA
Respectful. Innovative. Fiscally Responsible.

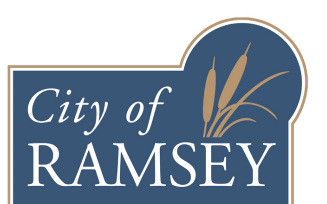


HIGHWAY 10/169

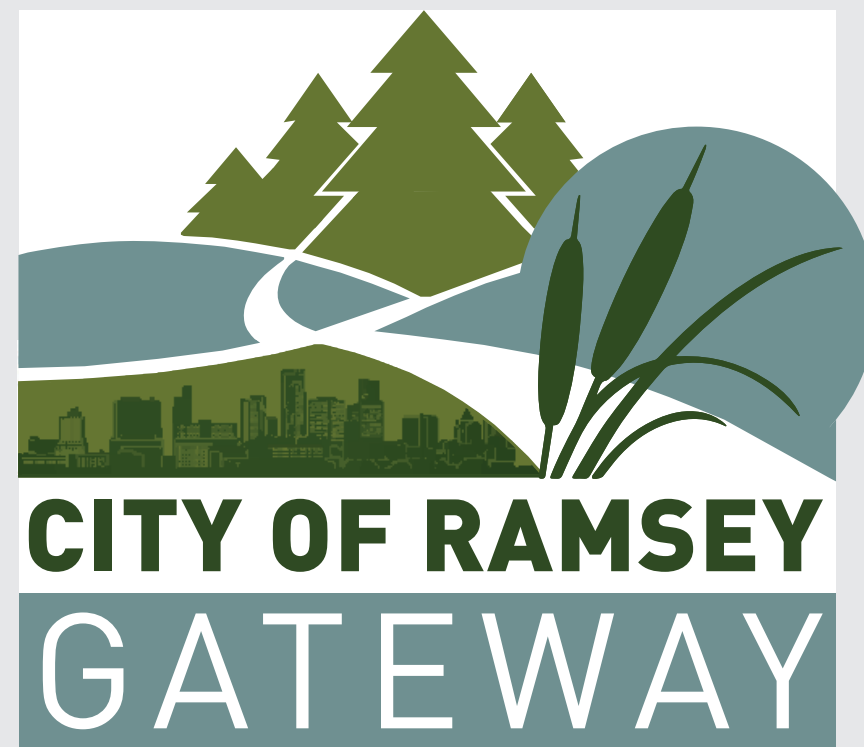
— CITY LIMITS UNDER STUDY FUNDED PROJECT



*FUTURE STUDY NEEDED
&
COORDINATION WITH
THE CITY OF ELK RIVER*



RAMSEYGATEWAY.COM

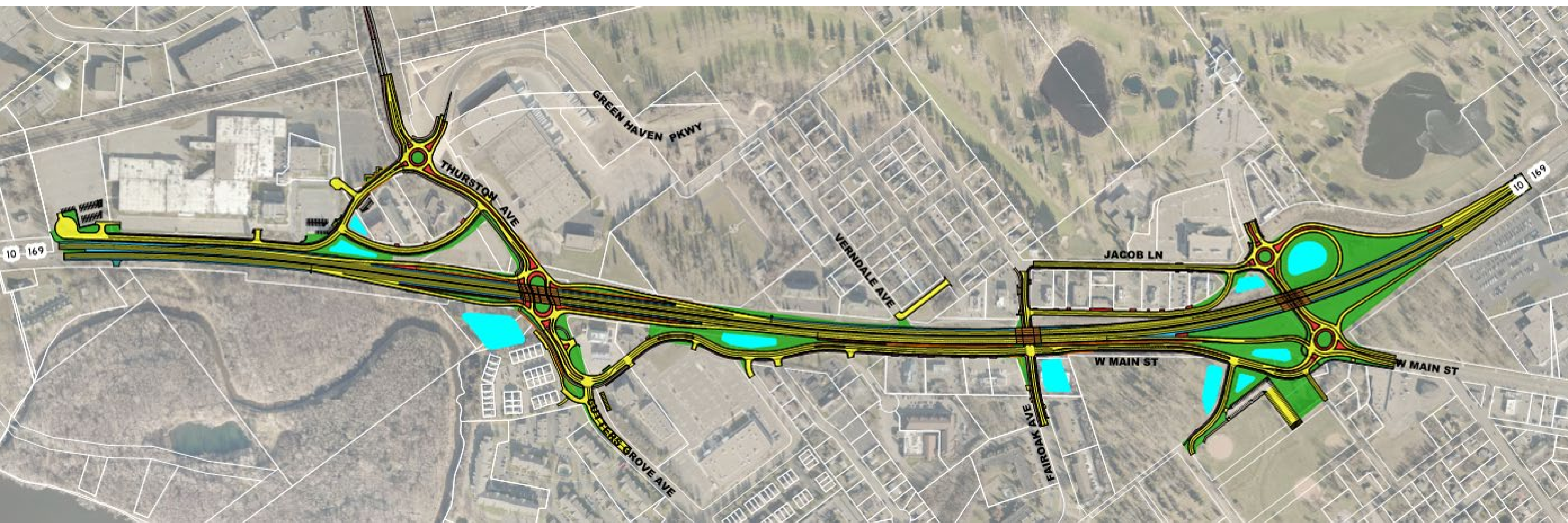


ANOKA SOLUTION

2022 CONSTRUCTION



Anoka County
MINNESOTA
Respectful. Innovative. Fiscally Responsible.



[RAMSEYGATEWAY.COM](https://ramseygateway.com)