

# **Ramsey Highway 10 Corridor Improvements**

**City of Ramsey  
Summer 2019 General Update**

August, 2019



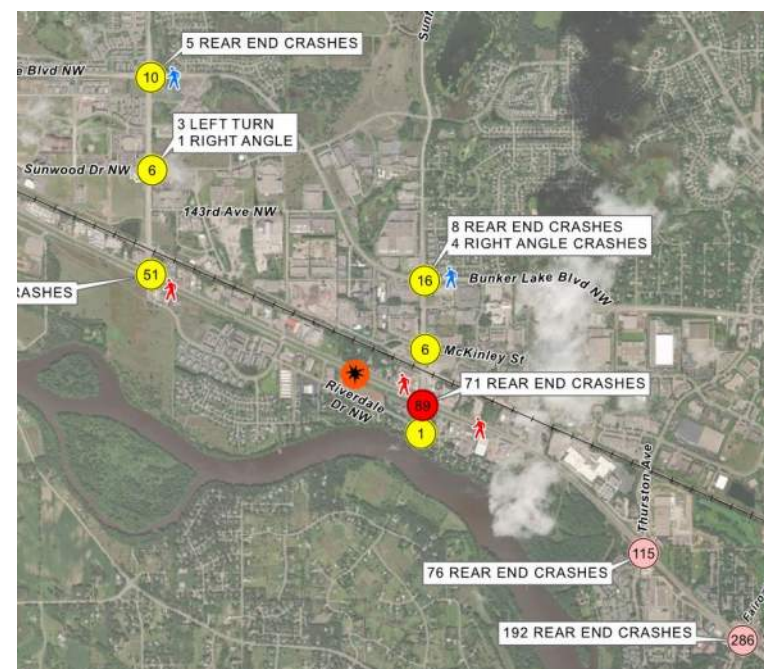




Sunfish Lake Blvd will be the first traffic signal encountered for westbound traffic after the Anoka Project is complete in 2023.

## Safety

- Numerous access points
  - 73 access points
- High number of crashes
  - 90 crashes per year
  - 60% rear end
  - Sunfish Lake Blvd Critical Index=1.41
  - 5 fatal crashes in 10 yrs







## Multimodal

- Hwy 10 serves vehicular, freight, transit and trains
  - 58 freight trains/day (79 mph)
  - 2.6 miles average train length
  - 12 Northstar trains
  - 2 Amtrak trains
  - Gate arms down approx. 2-3 hours/day
- Challenging corridor for pedestrians and bicyclists



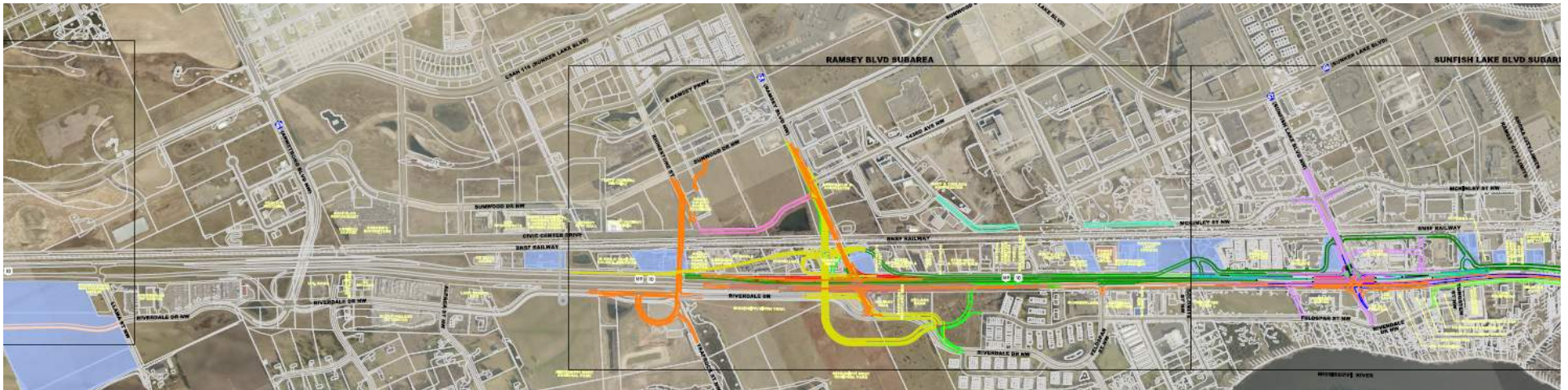


# Economic Development

- Strategic growth will align land uses with the transportation network
- 50% of properties along Hwy 10 are City owned

	2016	2020	2030	2040 Forecast	2040 Request
Population	26,251	27,550	33,350	34,700	39,150
Households	8,973	9,500	11,500	13,000	13,500
Employment	6,334	6,900	7,800	7,600	8,400

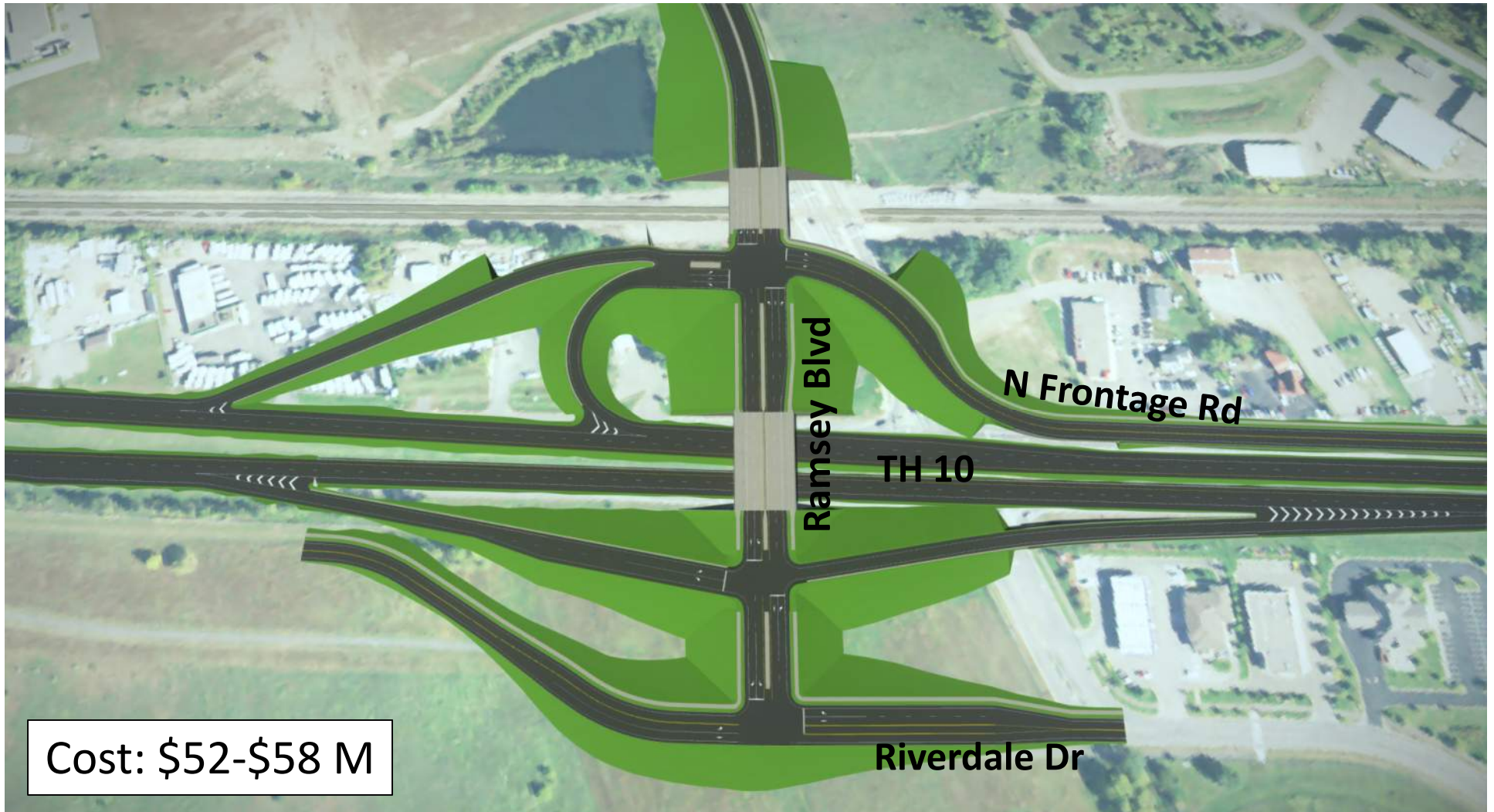
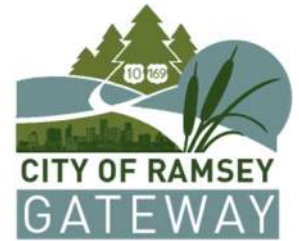
**RALF PROPERTIES**





# TAC Recommendation

## Ramsey Blvd Folded Tight Diamond

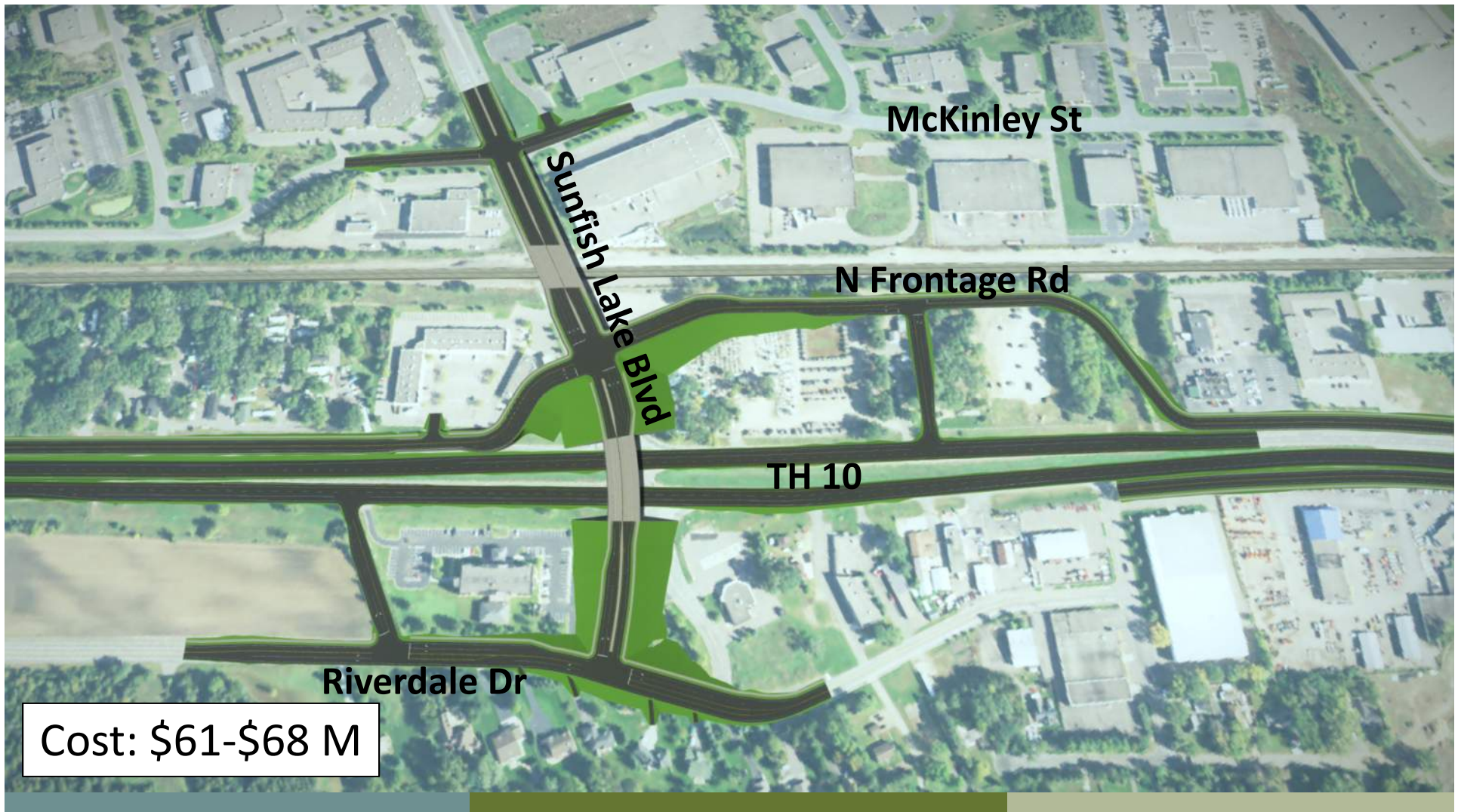
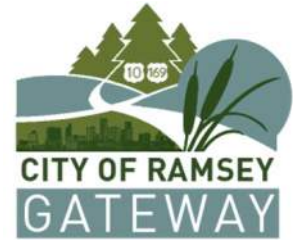


Cost: \$52-\$58 M



# Sunfish Lake Blvd Option

Overpass with Right-In/Right-Out – Option A  
Rail Grade Separation

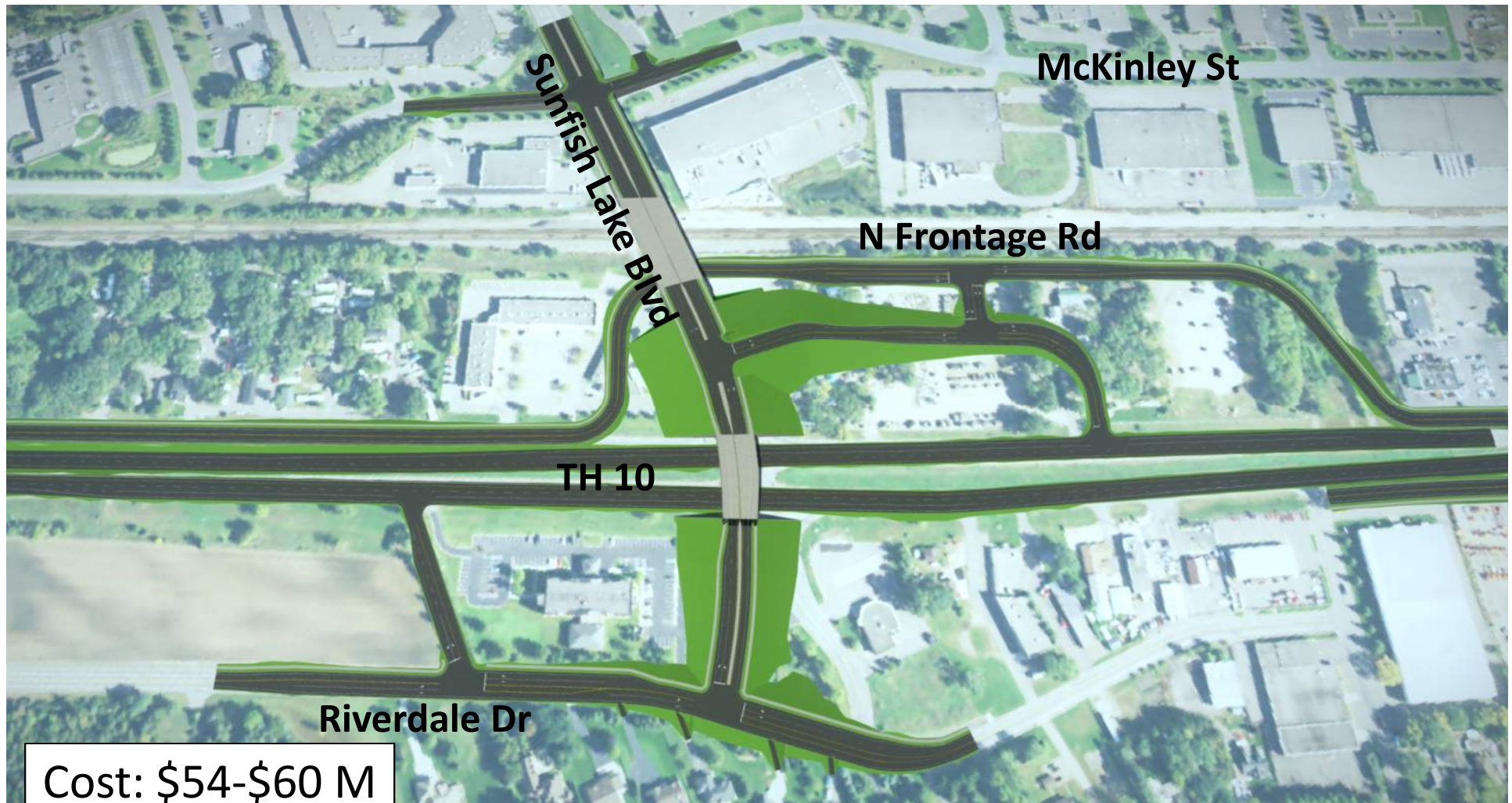
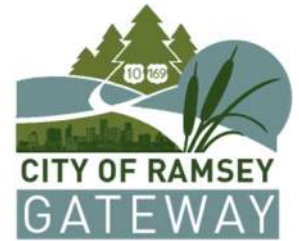


Cost: \$61-\$68 M



# Sunfish Lake Blvd Option

Overpass with Right-In/Right-Out – Option B  
Rail Grade Separation



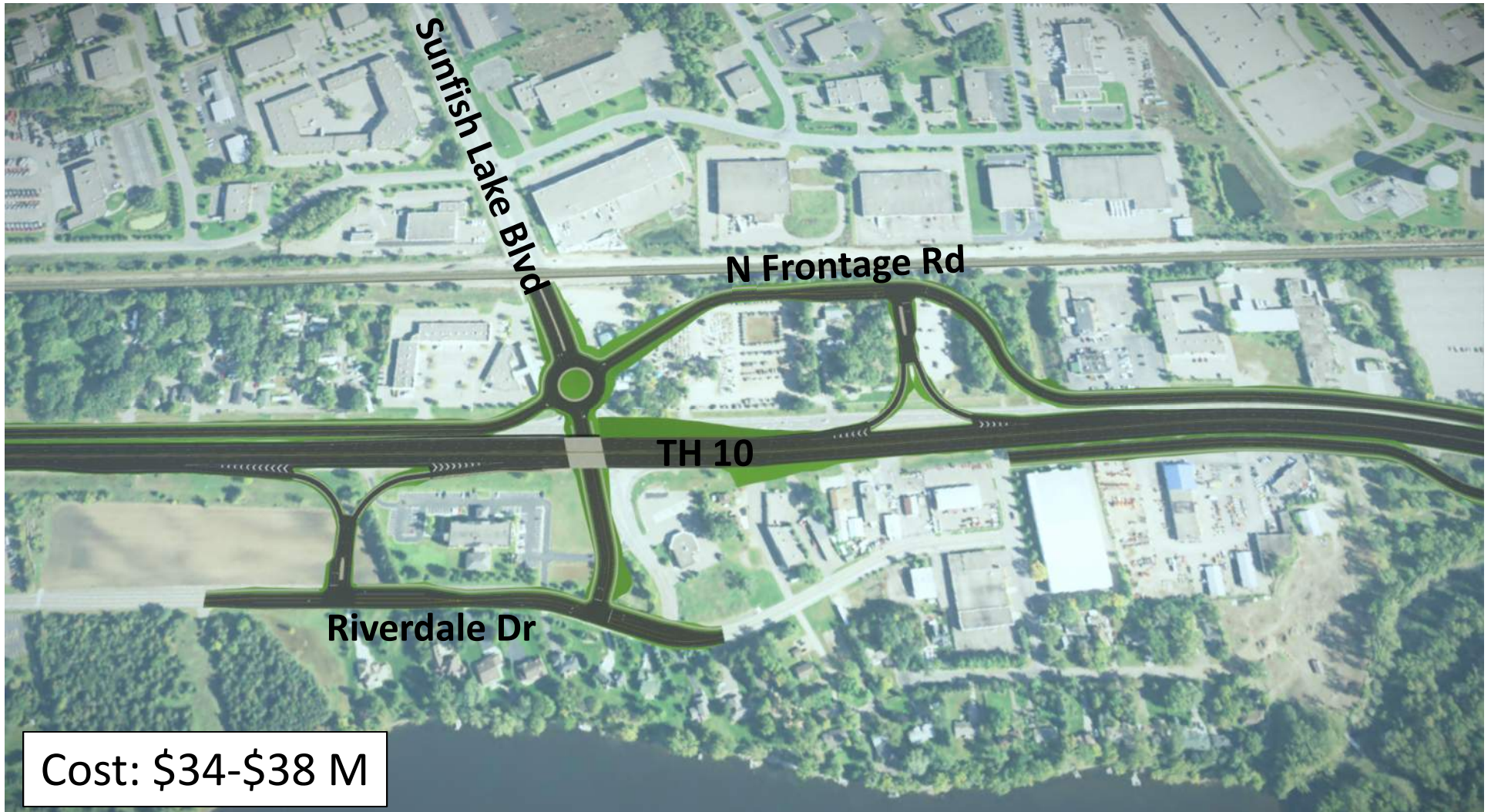
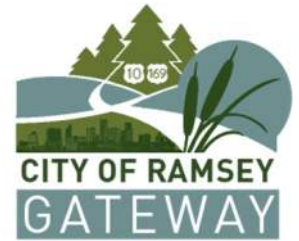
Cost: \$54-\$60 M



# Sunfish Lake Blvd Concepts

Right-In/Right-Out With Roundabout (Full Access)

At-Grade Rail



Cost: \$34-\$38 M



# Frontage Road between Ramsey & Sunfish



- Cost: \$12 - \$14 M





# Frontage Road Option



- **Total Cost: \$2.4 M**

# Range of Total Cost – East End

Inflated to 2025 dollars



## Both Grade Separated Rail

### TOTAL COST:

Ramsey Folded Tight Diamond \$52-\$58 M

Sunfish Overpass with RI/RO \$54-\$60 M

Frontage Rd (Ramsey-Sunfish) \$12-\$14 M

**\$118 - 132 M**

## One At-Grade Rail

### TOTAL COST:

Ramsey Folded Tight Diamond \$52-\$58 M

Sunfish RI/RO RAB (Full Access) \$34-\$38 M

Frontage Rd (Ramsey-Sunfish) \$12-\$14 M

**\$98 - 110 M**

### **Highway 10 Access Planning Study ~ \$98 - 110 M (2014 dollars).....\$150-170 M (2025)**

Sunfish Lake Blvd with/without Rail Grade Separation ~\$48 M/ \$36 M

Ramsey Blvd with Rail Grade Separation ~\$50 M

Frontage Road (Ramsey-Sunfish) ~\$12 M