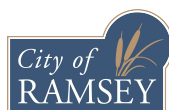


Appendix C: Highway Access 10 Planning Study Concepts



Anoka County
MINNESOTA

Respectful. Innovative. Fiscally Responsible



Real People. Real Solutions.



North Frontage Road

(Sunfish Lake Blvd to Anoka Technical College)

Highway 10 Access Planning Study



Priority: Immediate
Cost: \$3.0M

- Continuous Frontage Road for Local Business Access
- Construct Median Barrier
- Right-in/Right-out to Hwy 10

Achieves:

- 11 access points removed from Hwy 10
- Supports existing businesses and city's redevelopment goals
- Acceptable to most adjacent businesses
- Supports sequencing for other improvements on Hwy 10

BOLTON & MENK, INC.
Consulting Engineers & Surveyors



North Frontage Road

(Ramsey Blvd to Sunfish Lake Blvd)

Highway 10 Access Planning Study



Priority: Immediate
Cost: \$11.6M

- Continuous Frontage Road for Local Business Access
- Construct Median Barrier
- Realign Westbound Hwy 10

Achieves:

- 20 access points removed from Hwy 10
- Critical local system connection along north side of Hwy 10
- Acceptable to most adjacent businesses
- Supports sequencing for other improvements on Hwy 10

BOLTON & MENK, INC.
Consulting Engineers & Surveyors



South Frontage Road

(Traprock St to Ramsey Blvd)

Highway 10 Access Planning Study



Priority: Immediate
Cost: \$1.1M

- Continuous South Side Frontage Road for Local Access

Achieves:

- Connects large area south of Hwy 10 with Armstrong Blvd interchange
- Critical local system connection along south side of Hwy 10
- Supports West Mississippi Regional Park development and city redevelopment goals
- Supports sequencing for other improvements on Hwy 10

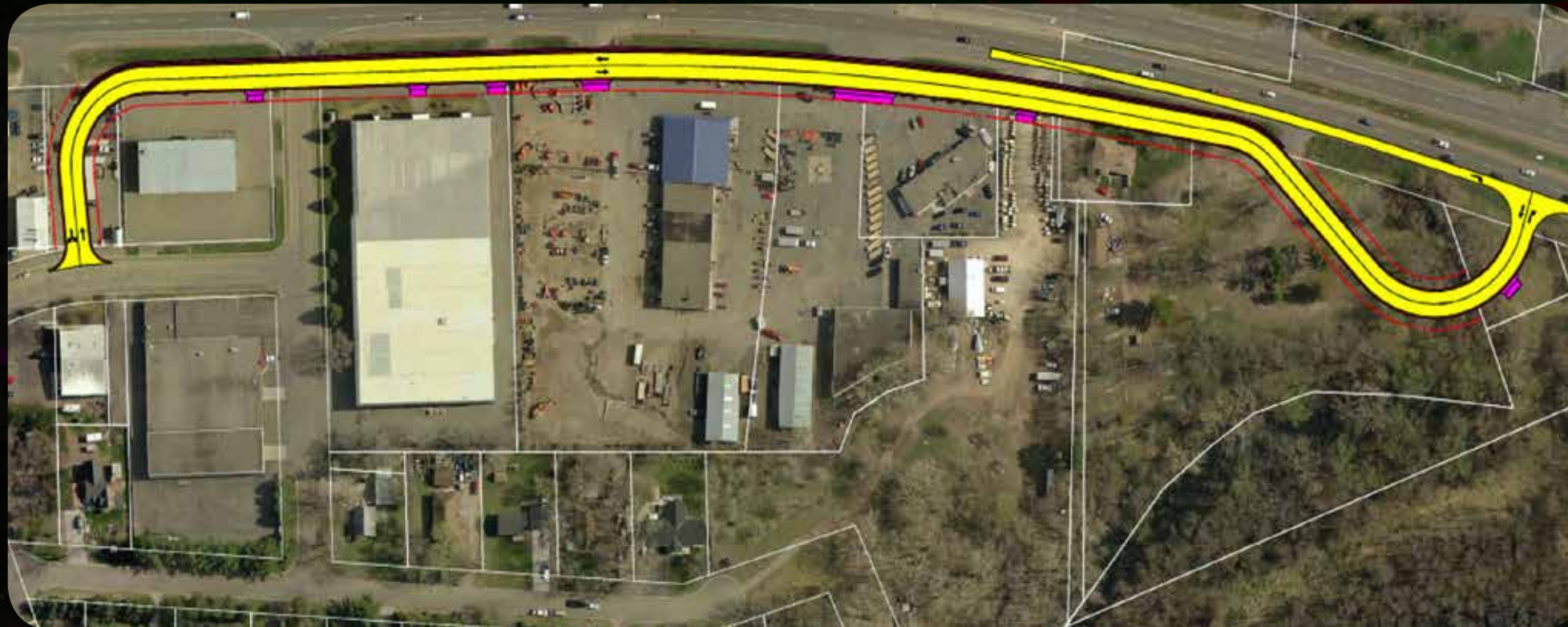
BOLTON & MENK, INC.
Consulting Engineers & Surveyors



Riverdale Dr Extension (Option A)

(East of Tungsten St)

Highway 10 Access Planning Study



Priority: Short Term

Cost: \$3.0M

- New Right In/Right Out Access on Hwy 10
- Frontage Road From Tungsten St to New Access

Achieves:

- 7 access points removed from Hwy 10
- Supports existing businesses and city's redevelopment goals
- Supports sequencing of other improvements on Hwy 10
- Flexibility for redevelopment potential

BOLTON & MENK, INC.
Consulting Engineers & Surveyors



Riverdale Dr Extension (Option B)

(East of Tungsten St)

Highway 10 Access Planning Study



Priority: Short Term
Cost: \$2.5M

- New Right In/Right Out Access on Hwy 10
- Local Street From Tungsten St to New Access

Achieves:

- 7 access points removed from Hwy 10
- Supports existing businesses and city's redevelopment goals
- Supports sequencing of other improvements on Hwy 10
- Flexibility for redevelopment potential

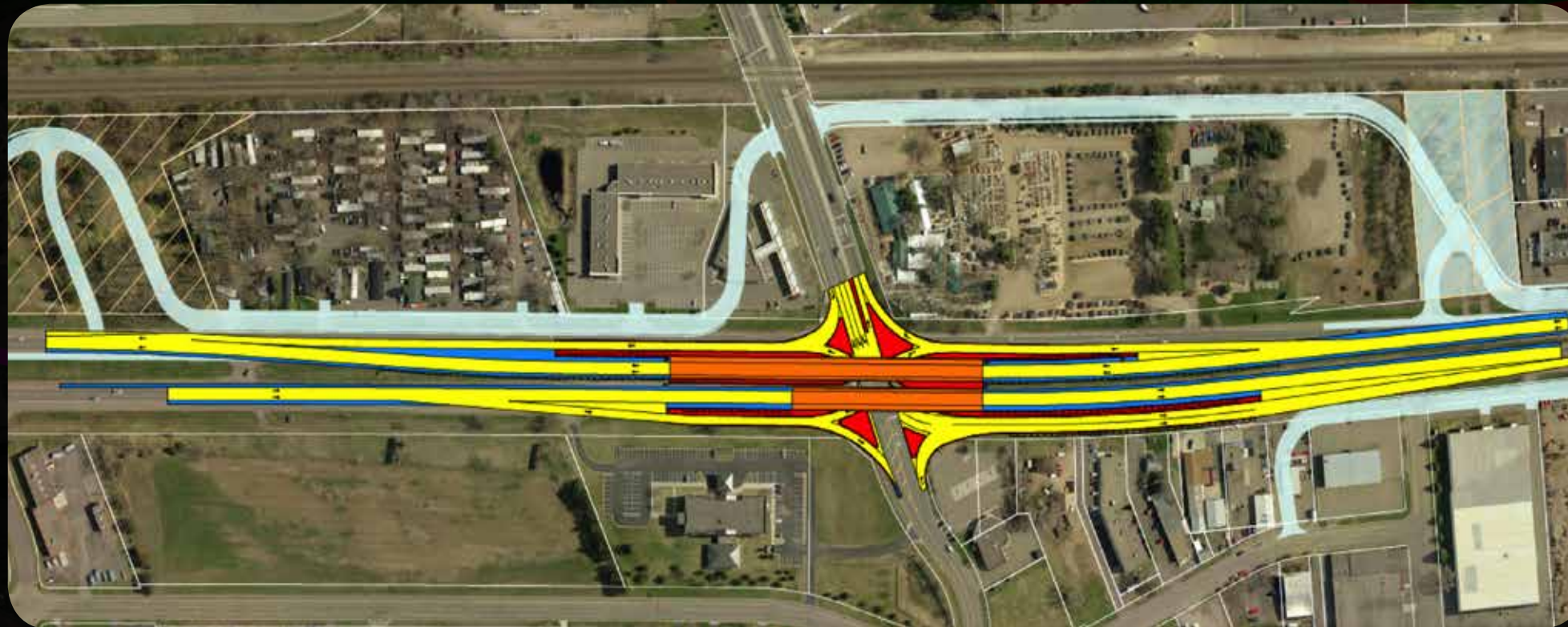
BOLTON & MENK, INC.
Consulting Engineers & Surveyors



Sunfish Lake Blvd (CSAH 57) Option A

Grade Separation

Highway 10 Access Planning Study



Priority: Mid Term
Cost: \$16M - \$28M

• Hwy 10 Flyover With Access

Achieves:

- Removal of 4th of 5 traffic signals from Hwy 10
- Provides grade separated access on Hwy 10
- Provides flexibility to add railroad grade separation

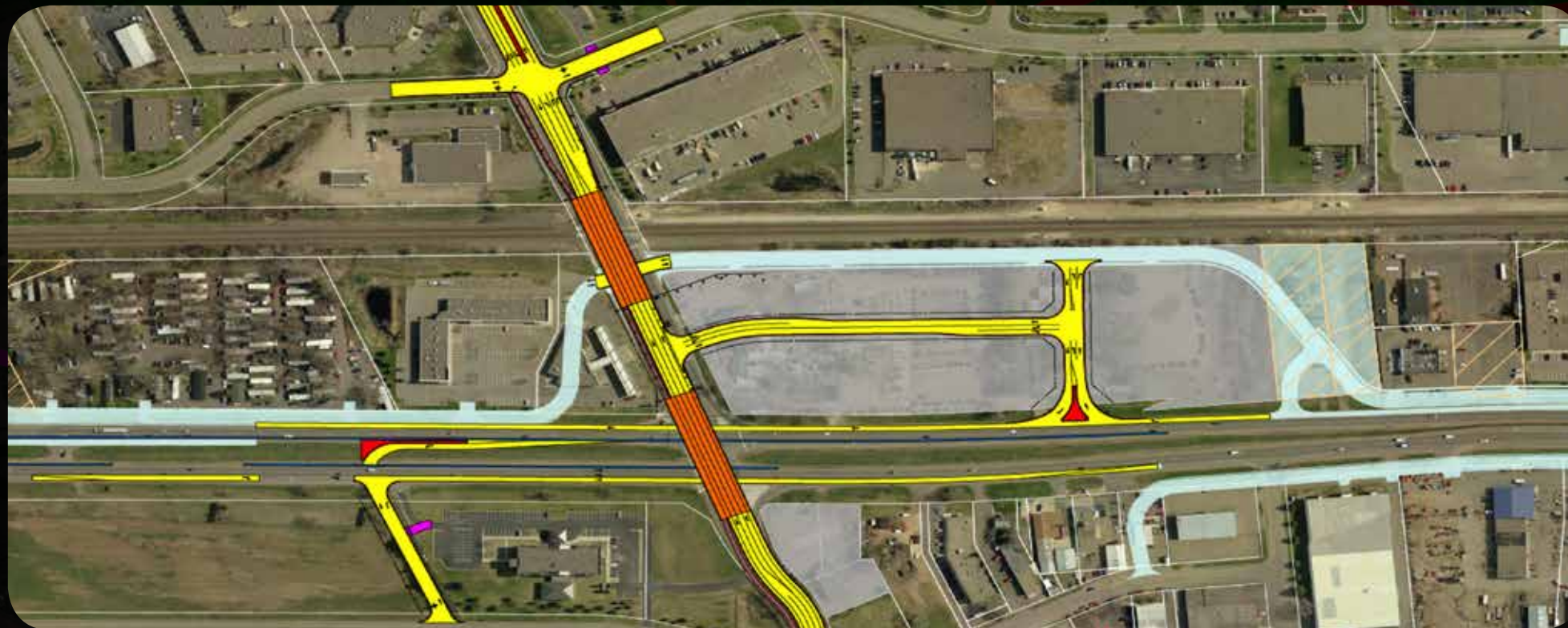
BOLTON & MENK, INC.
Consulting Engineers & Surveyors



Sunfish Lake Blvd (CSAH 57) Option B

Grade Separation

Highway 10 Access Planning Study



Priority: Mid Term
Cost: \$12M

• Overpass With Right Turn Access

Achieves:

- Removal of 4th of 5 traffic signals from Hwy 10
- Provides grade separated access on Hwy 10
- Flexibility in grade separation options and sequencing
- Provides flexibility to add railroad grade separation

BOLTON & MENK, INC.
Consulting Engineers & Surveyors



Ramsey Blvd (CSAH 56) Option A

Grade Separation

Highway 10 Access Planning Study



Priority: Mid Term
Cost: \$11M - \$24M

• Hwy 10 Flyover With Access

Achieves:

- Removal of 5th of 5 traffic signals from Hwy 10
- Provides grade separated access on Hwy 10
- Flexibility in grade separation options and sequencing
- Provides flexibility to add railroad grade separation

BOLTON & MENK, INC.
Consulting Engineers & Surveyors



Ramsey Blvd (CSAH 56) Option B

Grade Separation

Highway 10 Access Planning Study



Priority: Mid Term

Cost: \$15M

- **Multiple Options**
 - Overpass With Right Turn Access
 - Hwy 10 Flyover With Access

Achieves:

- Removal of 5th of 5 traffic signals from Hwy 10
- Provides grade separated access on Hwy 10
- Provides flexibility to add railroad grade separation

BOLTON & MENK, INC.
Consulting Engineers & Surveyors



Right-of-Way Purchase

(North of Highway 10, West of Ramsey Blvd)

Highway 10 Access Planning Study



Priority: Opportunity Driven
Cost: \$11.5M

Achieves:

- 13 access points removed from Hwy 10
- Area for storm water management or other highway use
- Flexibility for property owner timeframe

BOLTON & MENK, INC.
Consulting Engineers & Surveyors



Civic Center Dr Extension

Highway 10 Access Planning Study



Priority: Development Driven
Cost: \$600,000

- Local Street Extension to Ramsey Blvd
- Right Turn Access to Ramsey Blvd

Achieves:

- Local street connection Hwy 10 and Northstar Transit Station
- Supports city's development goals

BOLTON & MENK, INC.
Consulting Engineers & Surveyors



Railroad Grade Separation

(Sunfish Lake Blvd)

Highway 10 Access Planning Study



Priority: Safety Driven
Cost: \$14.5M

- Rail Bridge Over Sunfish Lake Blvd
- Local Street Overpass

Achieves:

- Grade separation of rail/vehicle/pedestrian movements
- Flexibility with Hwy 10 Flyover Options



BOLTON & MENK, INC.
Consulting Engineers & Surveyors



Railroad Grade Separation

(Ramsey Blvd)

Highway 10 Access Planning Study



Priority: Safety Driven

Cost: \$11.5M

• Rail Bridge Over Ramsey Blvd

Achieves:

- Grade separation of rail/vehicle/pedestrian movements
- Flexibility with Hwy 10 Flyover Options



BOLTON & MENK, INC.
Consulting Engineers & Surveyors



156th St Extension

(Jarvis St to Alpine St)

Highway 10 Access Planning Study



Priority: Safety/Development Driven
Cost: \$800,000

• **Local Street Extension to Primary Intersection**

Achieves:

- 4 access points removed from Hwy 10
- Supports existing businesses and city's development goals
- Supports sequencing for other improvements on Hwy 10
- Critical local system connection along north side of Hwy 10

BOLTON & MENK, INC.
Consulting Engineers & Surveyors



Reduced Conflict U-Turn (RCUT)

Intersection at Alpine Dr

Highway 10 Access Planning Study



Priority: Safety/Development Driven
Cost: \$1.4M

- RCUT at Alpine Dr & Hwy 10
- Turn Lane Improvements
- South Frontage Road Extension to Adams St.

Achieves:

- 2 access points removed from Hwy 10
- Critical local system connection along south side of Hwy 10
- Supports city's development goals
- Alternative to future traffic signal installation on Hwy 10

BOLTON & MENK, INC.
Consulting Engineers & Surveyors



Reduced Conflict U-Turn (RCUT)

Intersection at Bowers Dr

Highway 10 Access Planning Study



Priority: Safety/Development Driven
Cost: \$800,000

- RCUT at Bowers Dr
- Turn Lane Improvements

Achieves:

- 2 access points removed from Hwy 10

BOLTON & MENK, INC.
Consulting Engineers & Surveyors



South Frontage Road

(Edison St to Adams St in Elk River)

Highway 10 Access Planning Study



Achieves:

- 2 access points removed from Hwy 10
- Supports sequencing for other improvements on Hwy 10
- Critical local system connection along south side of Hwy 10

Priority: Development Driven
Cost: \$1.0M

• Local Street Extension

BOLTON & MENK, INC.
Consulting Engineers & Surveyors



Riverdale Dr Extension

(Bowers Dr to Llama St)

Highway 10 Access Planning Study



Priority: Development Driven
Cost: \$2.0M

• Local Street Extension

Achieves:

- Critical local system connection along south side of Hwy 10
- Continuous local street along south side of Hwy 10
- Supports city's development goals

BOLTON & MENK, INC.
Consulting Engineers & Surveyors