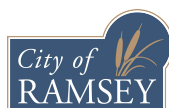
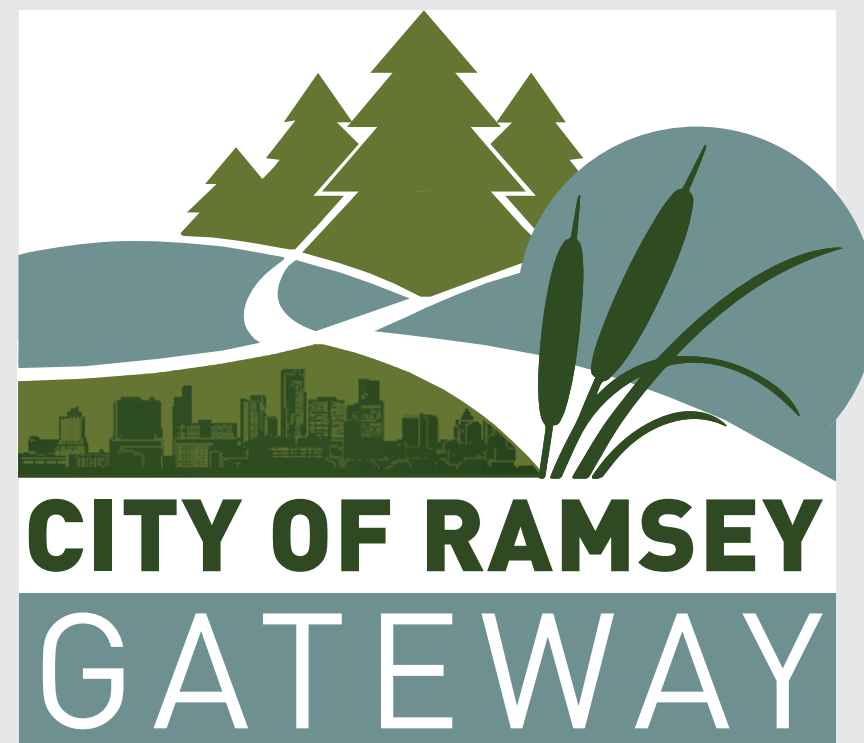


# Appendix H: Open House Materials





Anoka County  
MINNESOTA  
Respectful. Innovative. Fiscally Responsible.



# THE RAMSEY GATEWAY PROJECT

## Open House

[RAMSEYGATEWAY.COM](http://RAMSEYGATEWAY.COM)



# The Ramsey Highway 10/169 Gateway Project

## IN 2014, 2014 MOVEMENT STARTED

The Highway 10 Access Planning Study identified a broad vision with **several improvement options** for Highway 10 in Ramsey and Anoka.

CITY CONSTRUCTED  
FRONTAGE ROADS

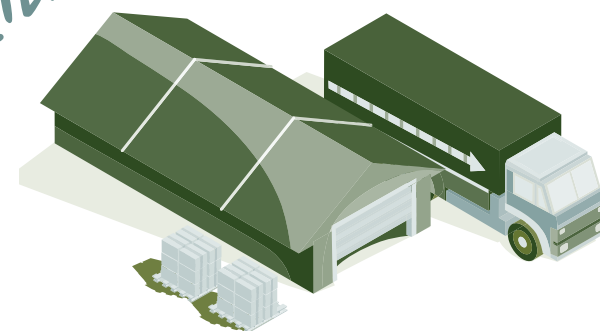


## IN 2018, THE STUDY CONTINUED

The City of Ramsey, in collaboration with Anoka County and MnDOT, built upon previous work to:

- » Establish a singular vision
- » Resolve uncertainty
- » Position for funding

FREIGHT  
FACILITIES



WE ARE  
HERE  
2019

## IN 2019, A LAYOUT WILL BE DEVELOPED

The recommended project layout will:

- » Serve all users
- » Reduce delays
- » Improve safety and reliability
- » Maintain responsible access
- » Support economic development

2020+

## IN 2020 AND BEYOND

the Project Team aims to continue momentum:

1. Completing more detailed design
2. Obtaining funding
3. Building the corridor vision

### KEY ISSUES:

Multiple  
hours of  
congestion

High  
number of  
crashes

Too many  
accesses  
that degrade  
safety and  
performance

Important  
multi-modal  
corridor

Challenging  
for bikers &  
walkers

Regional  
gateway

MISSISSIPPI RIVER

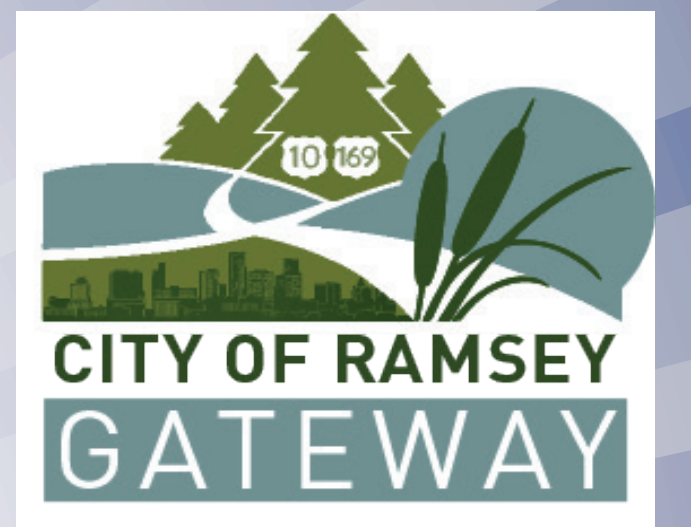
Highway 10 is a critical multimodal transportation link between Minneapolis/St. Paul and Fargo

NORTHSTAR  
STATION





# Highway 10/169 THE GREATER MINNESOTA GATEWAY



Highway 10 serves the Northern Minnesota tourism industry and is a major commuter route into the Twin Cities metro area.

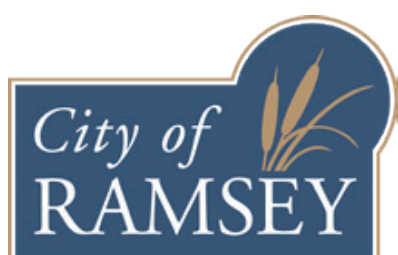


In 2022, construction of Highway 10/169 in Anoka and Elk River will be underway. Congestion and crashes in Ramsey will increase.



Anoka County  
MINNESOTA

Respectful, Innovative, Fiscally Responsible



ELK RIVER

RAMSEY

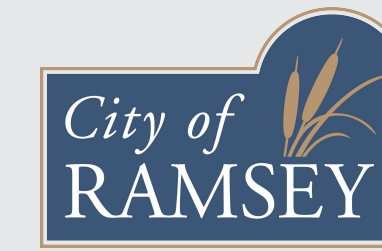
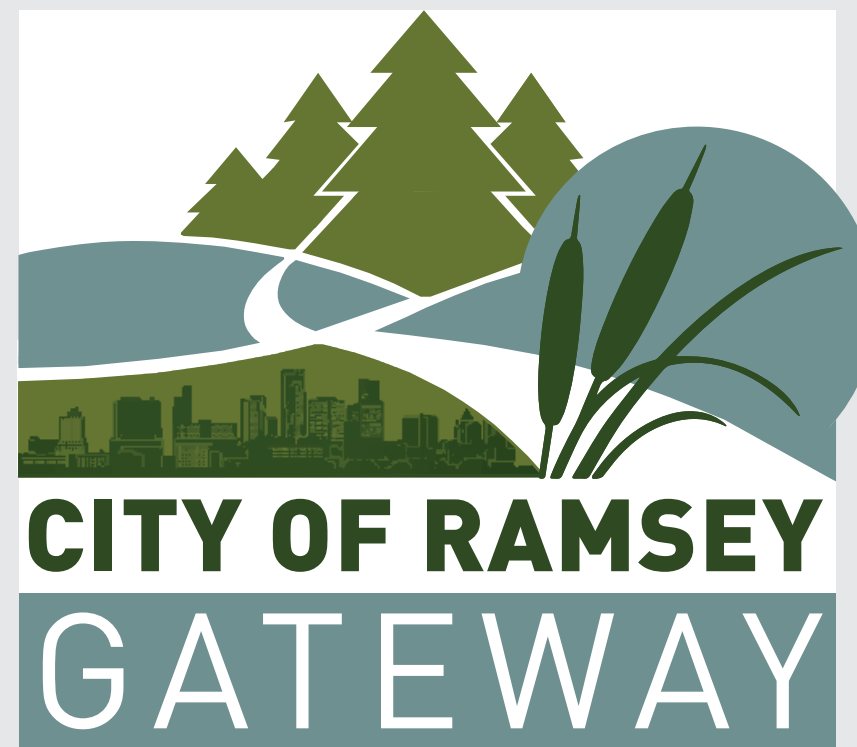
PROJECT AREA

Dayton

ANOKA

RAMSEYGATEWAY.COM





Anoka County  
MINNESOTA  
Respectful, Innovative, Fiscally Responsible



## PROJECT GOALS

SAFELY  
ACCOMMODATE  
ALL USERS

DEVELOP A  
FINANCIALLY  
RESPONSIBLE  
PLAN

PROVIDE  
EFFICIENT  
MOBILITY AND  
ACCESS FOR ALL

BUILD A  
CONNECTED AND  
RECOGNIZABLE  
HIGHWAY 10  
CORRIDOR

COMPATIBLE  
WITH THE BUILT  
AND NATURAL  
ENVIRONMENT

## NEXT STEPS

### Phase 1

#### What?

Project Justification,  
Concepts & Evaluation

#### Why?

Establish a Singular Vision  
Resolve Uncertainty  
Position for Funding

WE ARE HERE!

### Phase 2

#### What?

Vision Refinement &  
Preliminary Design

#### Why?

Define Exactly What to Build  
Identify Detailed Impacts & Costs  
Apply for Funding

2019+

### Phase 3

#### What?

Final Design &  
Right of Way

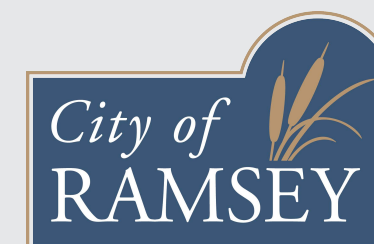
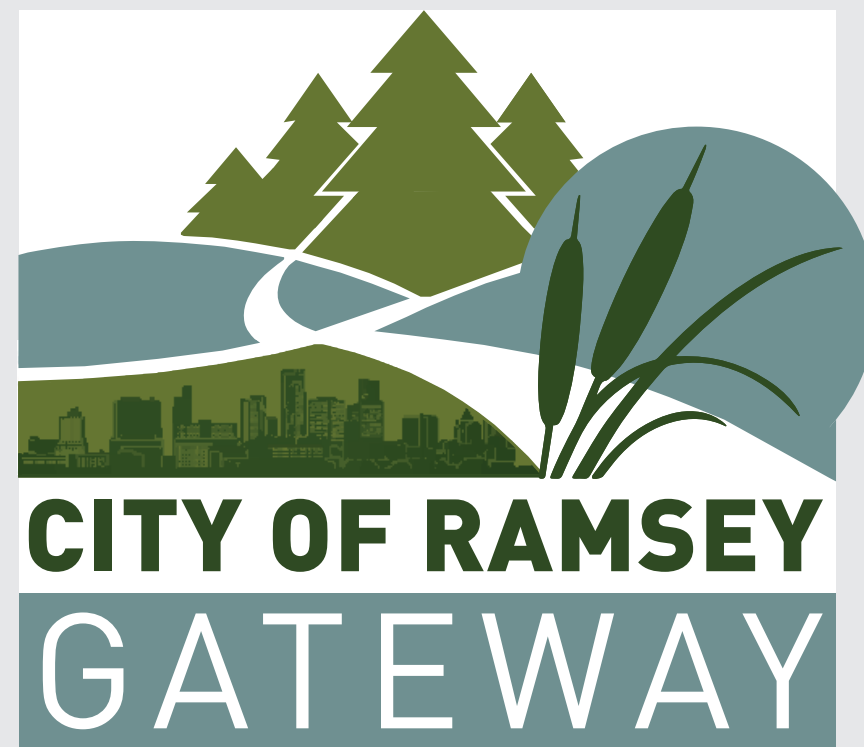
#### Why?

Define How to Build the Vision  
Obtain Right of Way  
Fill Funding Gap

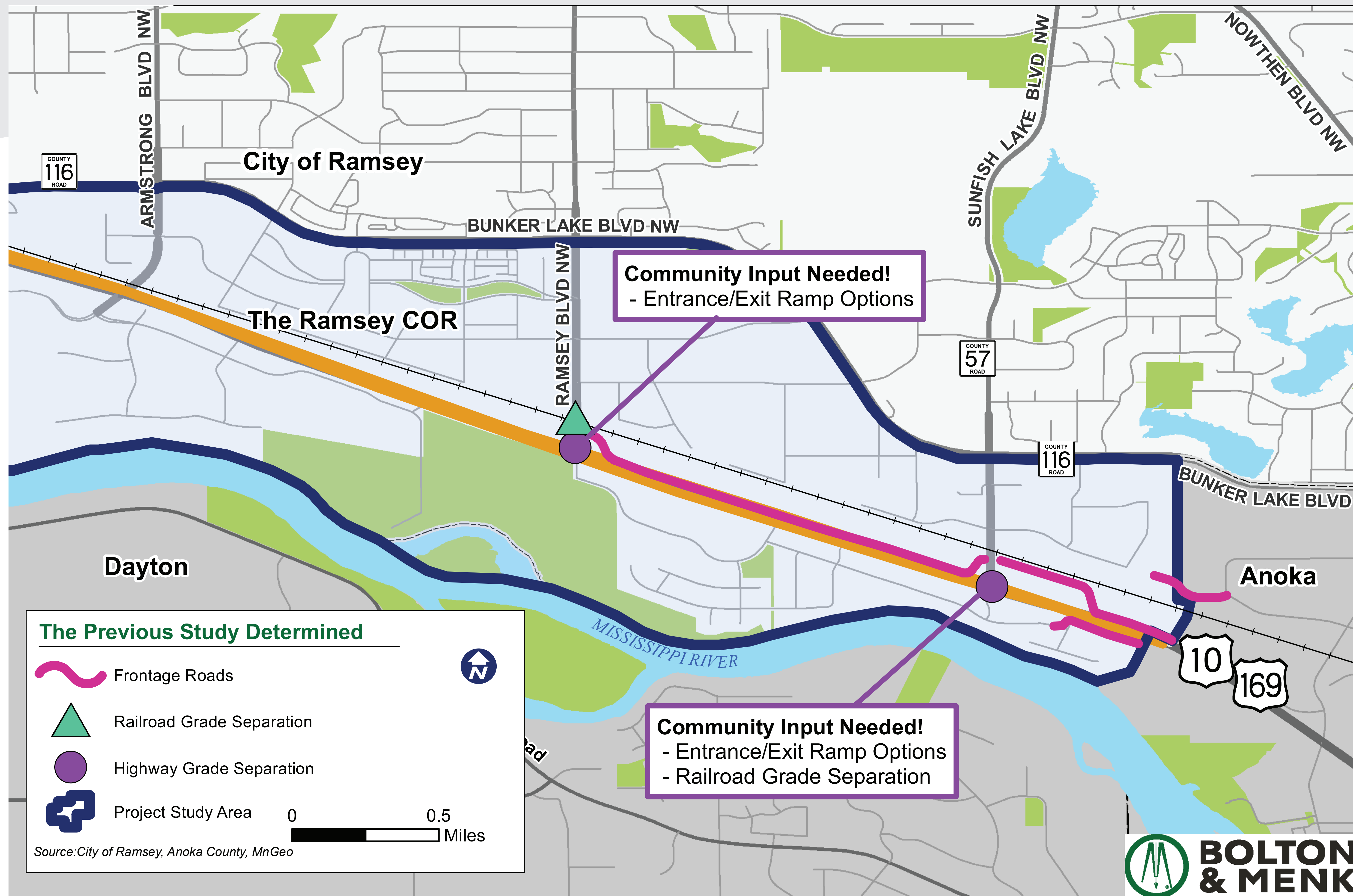
2020+

Construction

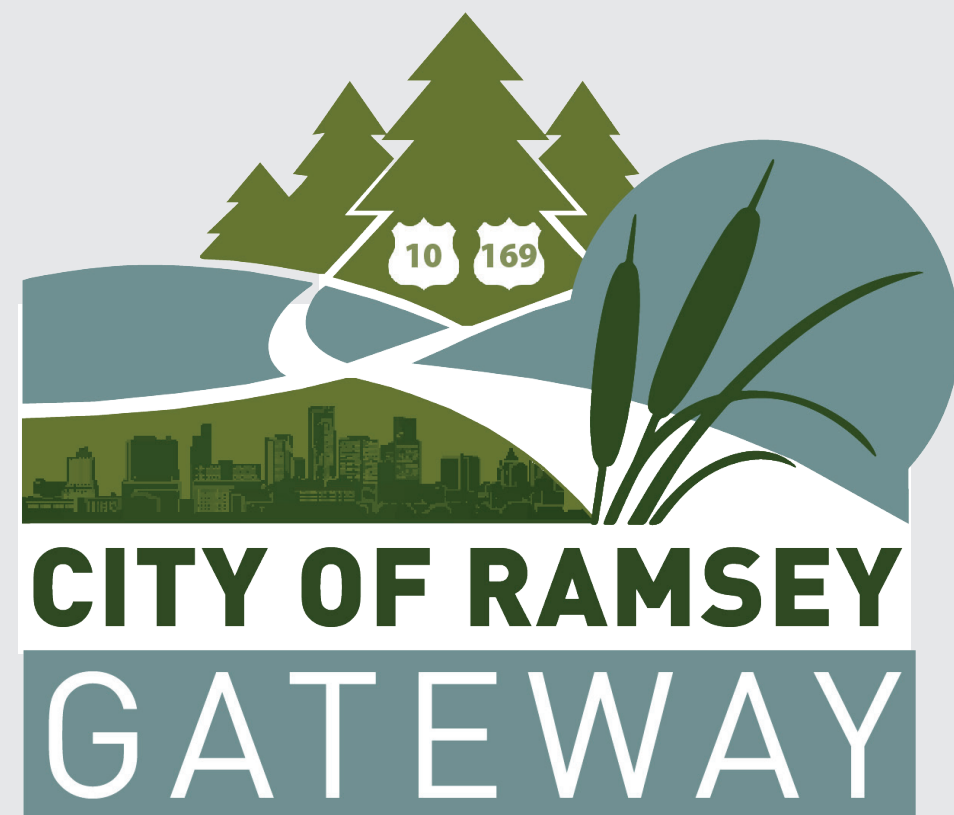
RAMSEYGATEWAY.COM



Anoka County  
MINNESOTA  
Respectful. Innovative. Fiscally Responsible.







# SUNFISH LAKE BOULEVARD OVERPASS WITH RIGHT-IN/RIGHT-OUT

OVERALL  
BENEFITS SCORE

OPTION A

81

OPTION B

81



## TOP MEASURES

OPTION A

OPTION B



PEDESTRIAN EASE



BUSINESS EASE



PROPERTY IMPACTS



COST

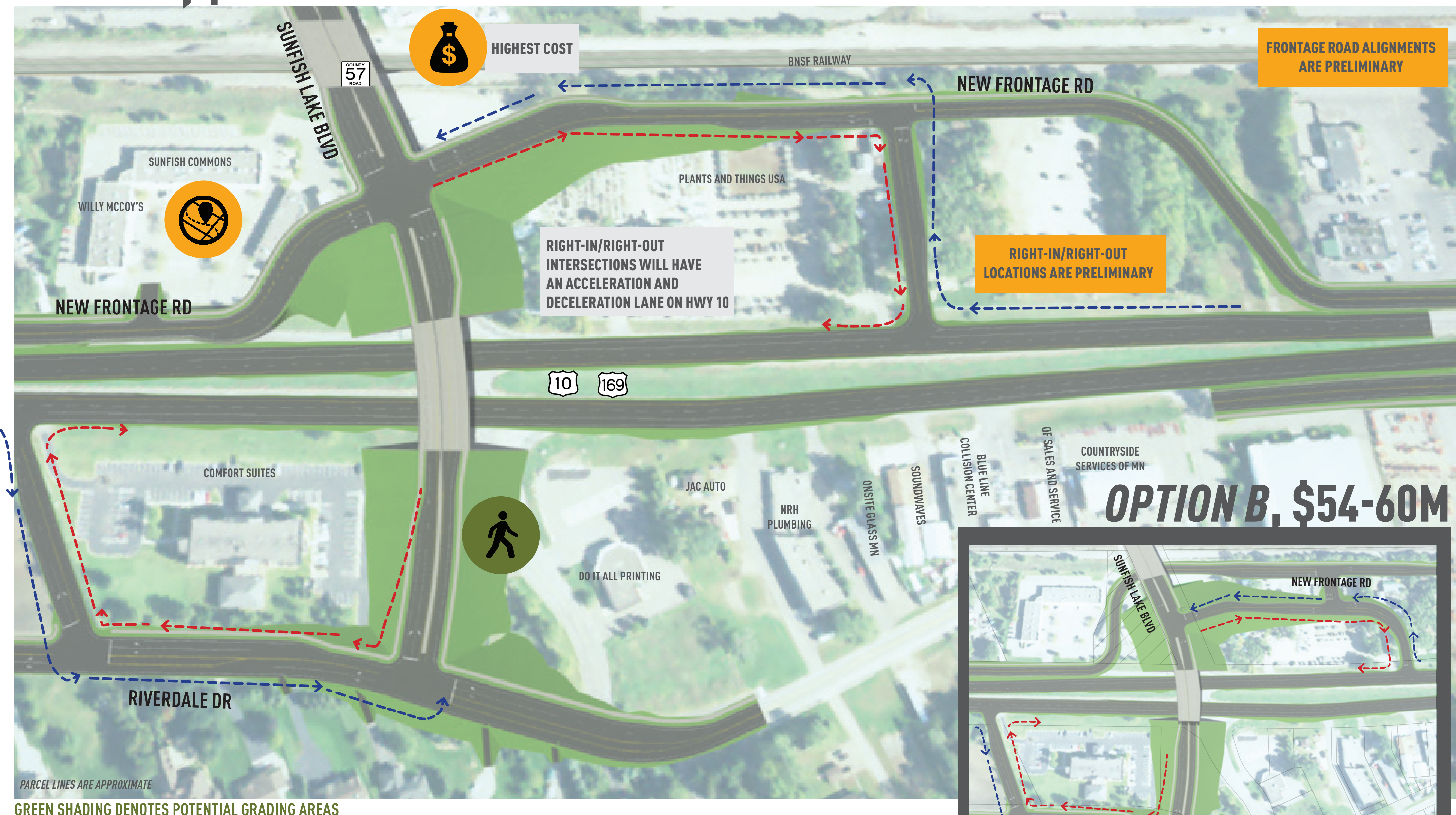


RR GRADE SEPARATION

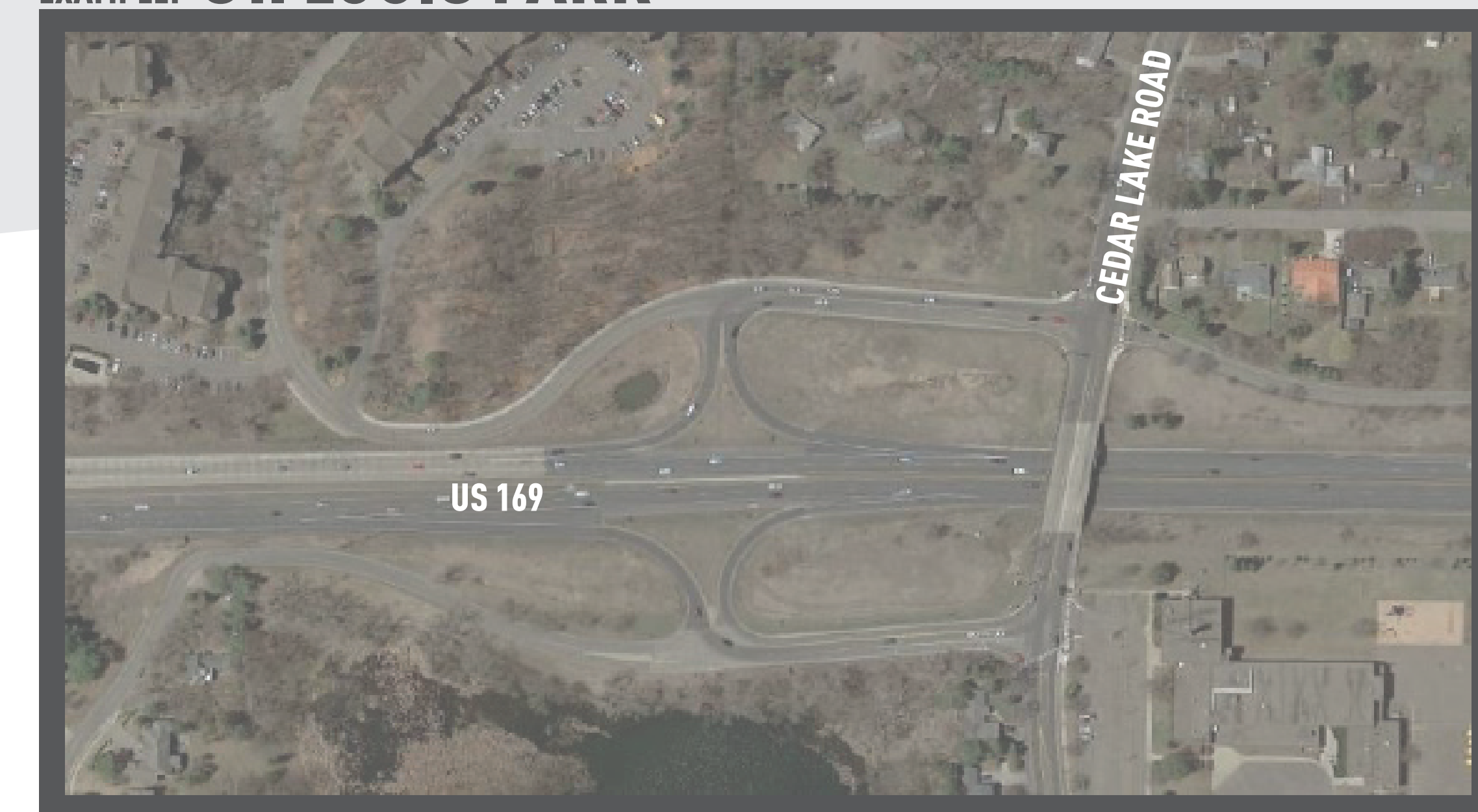


COLOR CODE BREAKDOWN

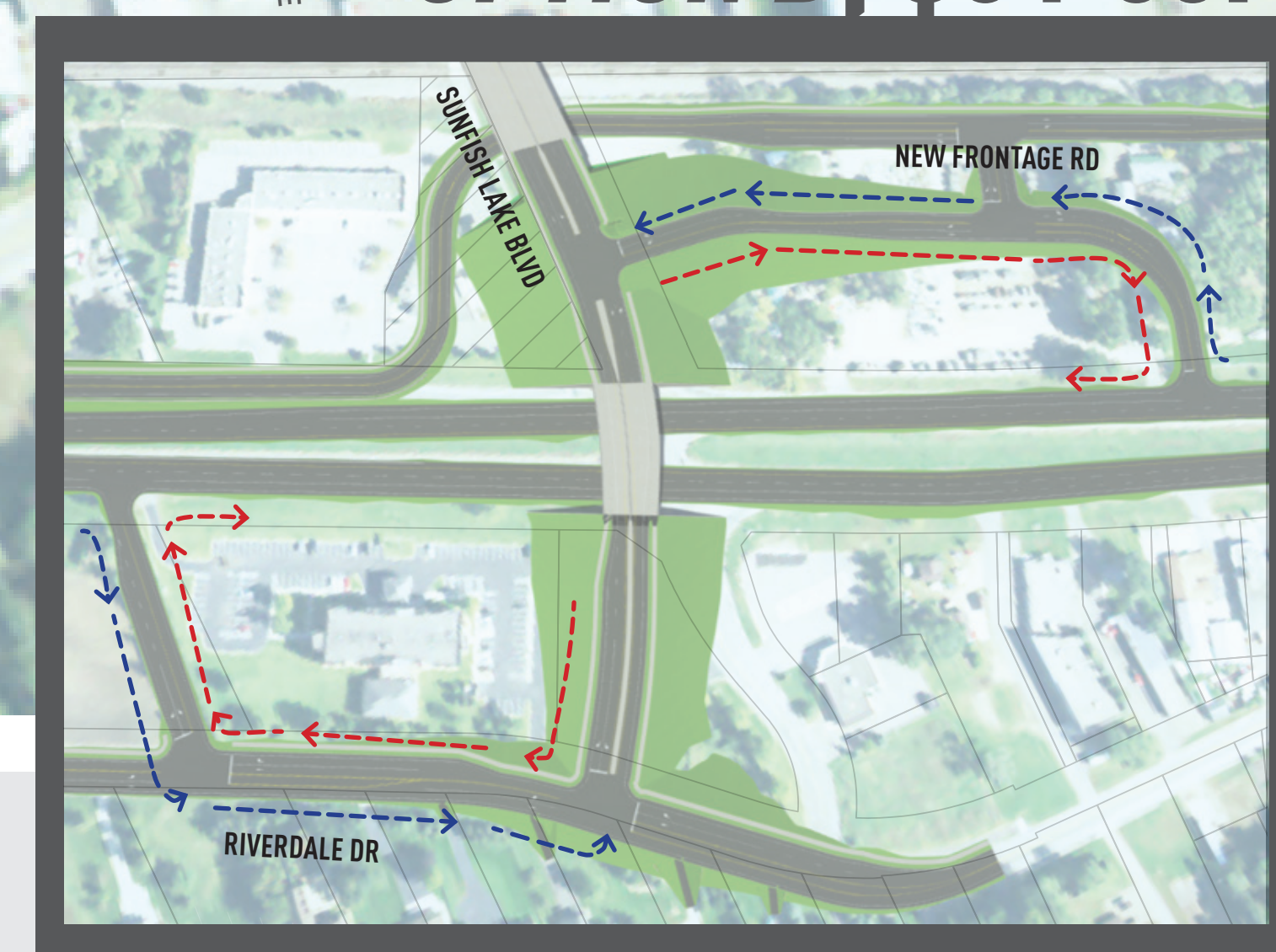
## OPTION A, \$61-68M



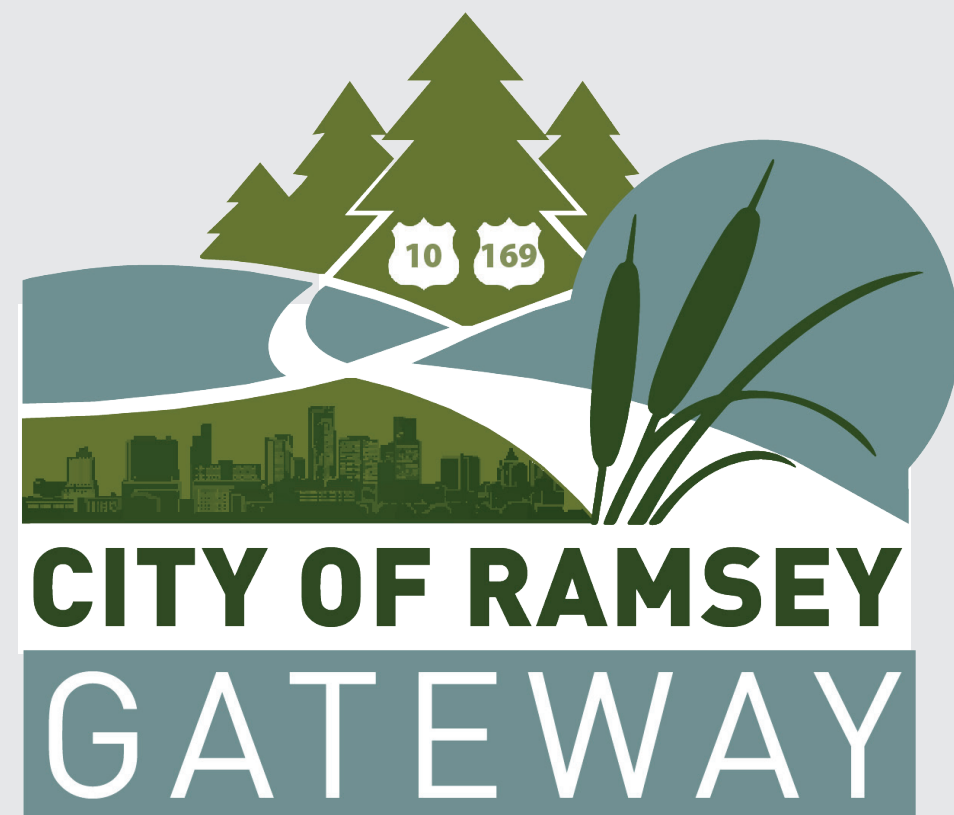
## EXAMPLE: ST. LOUIS PARK



## OPTION B, \$54-60M







# SUNFISH LAKE BOULEVARD

## GRADE-SEPARATED ROUNDABOUT

OVERALL  
BENEFITS SCORE

72

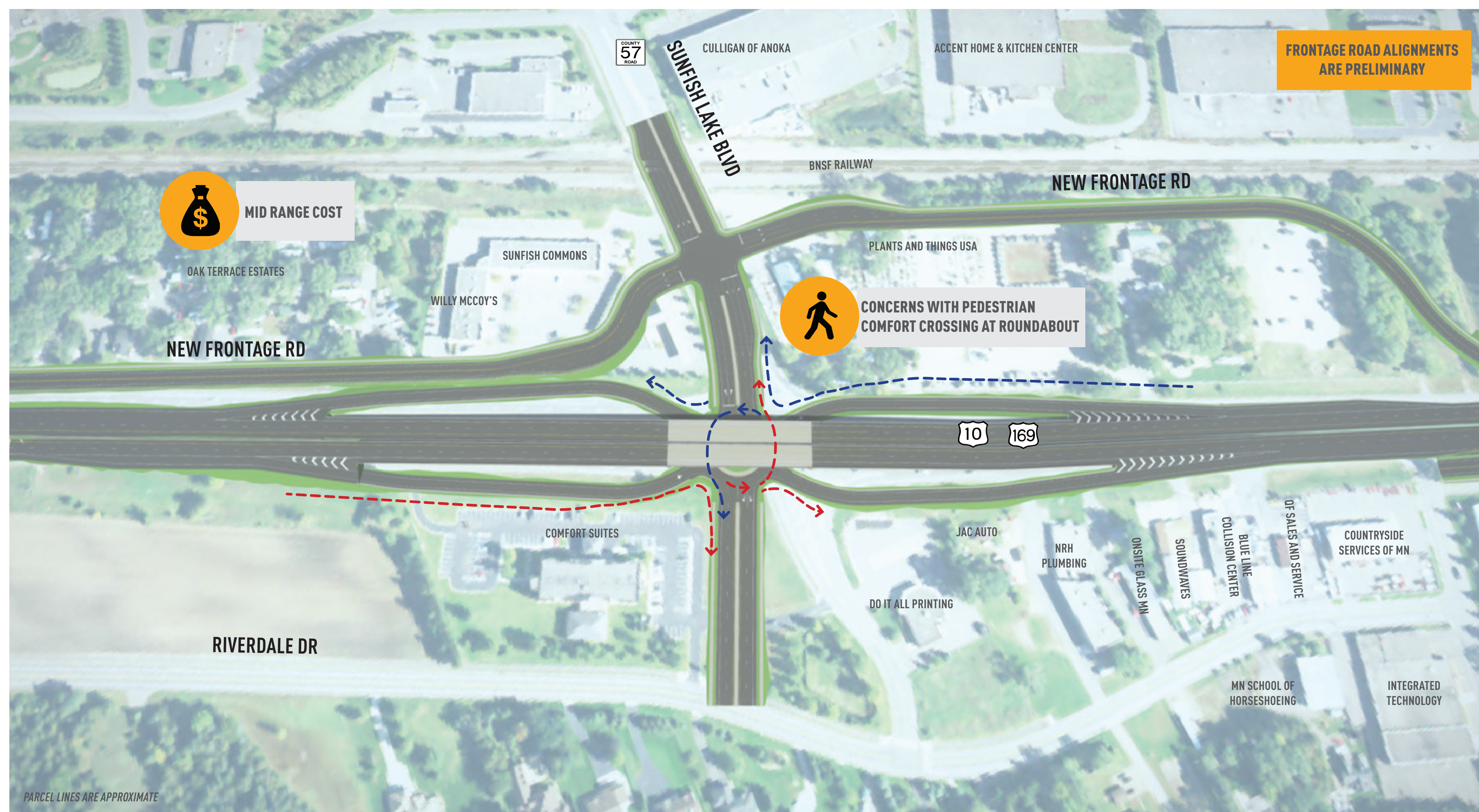


### TOP MEASURES

-  PEDESTRIAN EASE
-  BUSINESS EASE
-  PROPERTY IMPACTS
-  COST
-  RR GRADE SEPARATION



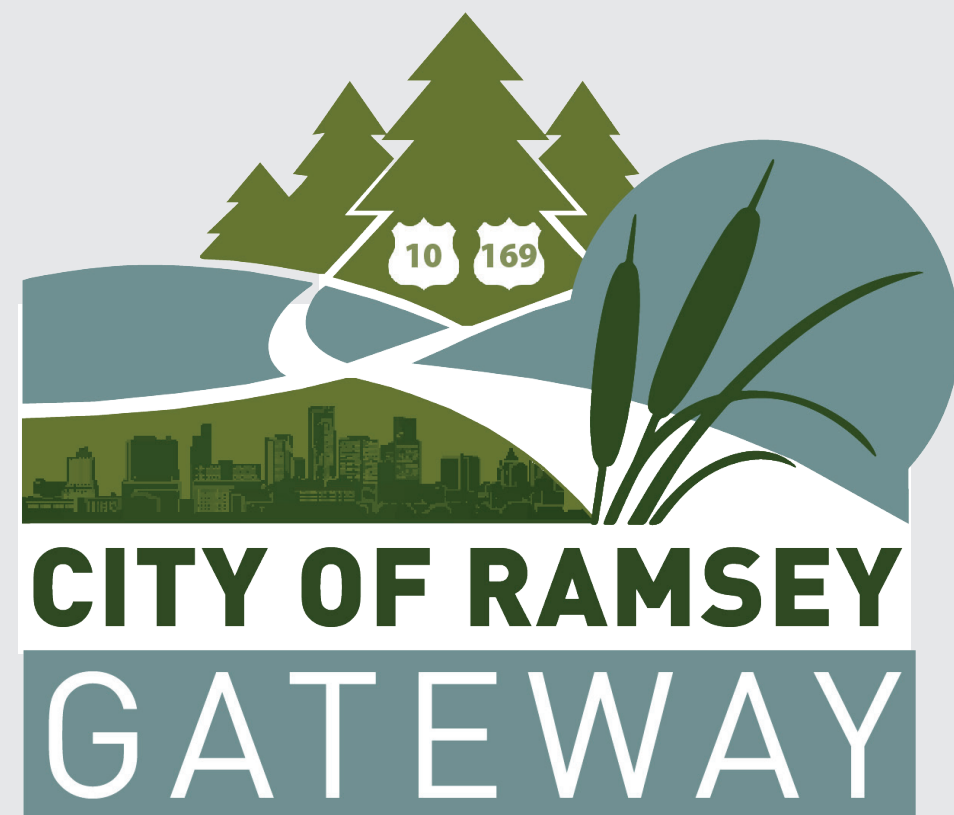
COLOR CODE BREAKDOWN



GREEN SHADING DENOTES POTENTIAL GRADING AREAS

\$51-56M





# SUNFISH LAKE BOULEVARD

## CENTER TURN OVERPASS

OVERALL  
BENEFITS SCORE  
**72**



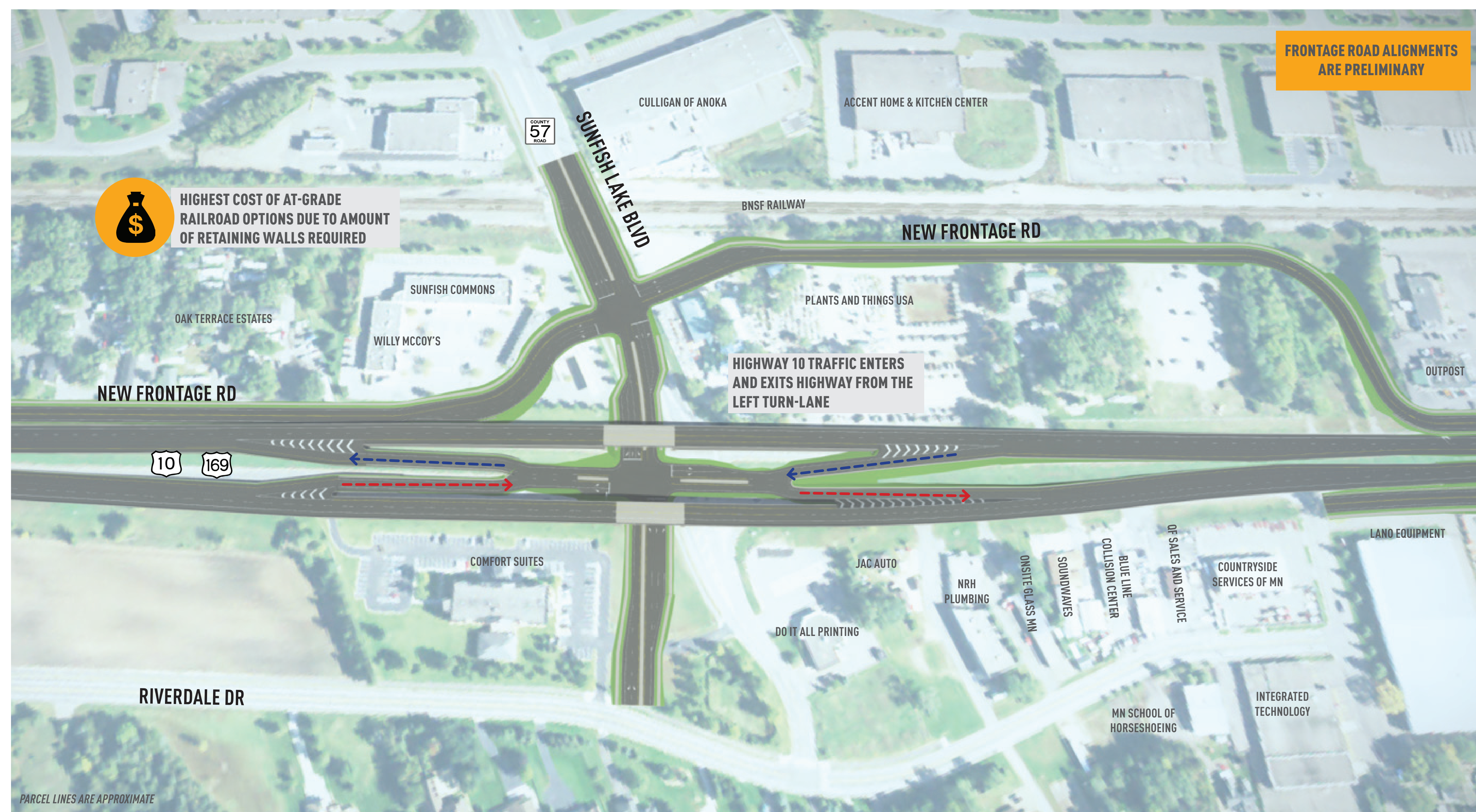
### TOP MEASURES

-  PEDESTRIAN EASE
-  BUSINESS EASE
-  PROPERTY IMPACTS
-  COST
-  RR GRADE SEPARATION



COLOR CODE BREAKDOWN

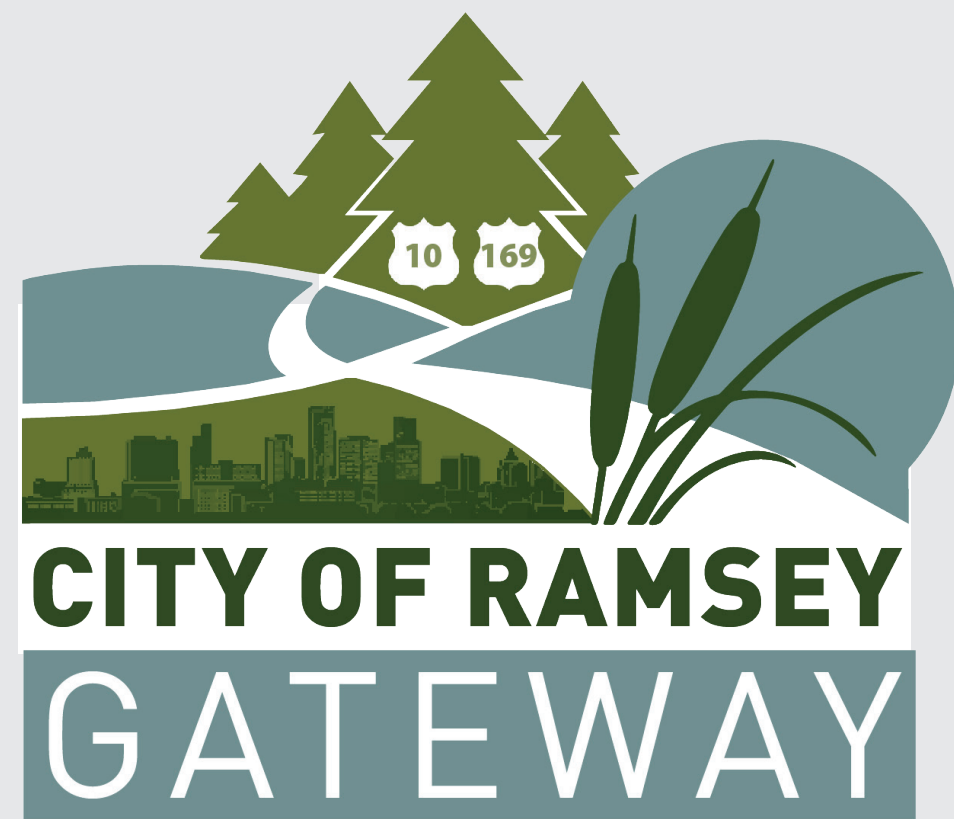
EXAMPLE: CHICAGO, IL



GREEN SHADING DENOTES POTENTIAL GRADING AREAS

**\$59-65M**





# SUNFISH LAKE BOULEVARD

## RIGHT-IN/RIGHT-OUT WITH ROUNDABOUT

### REDUCED ACCESS

OVERALL  
BENEFITS SCORE

66

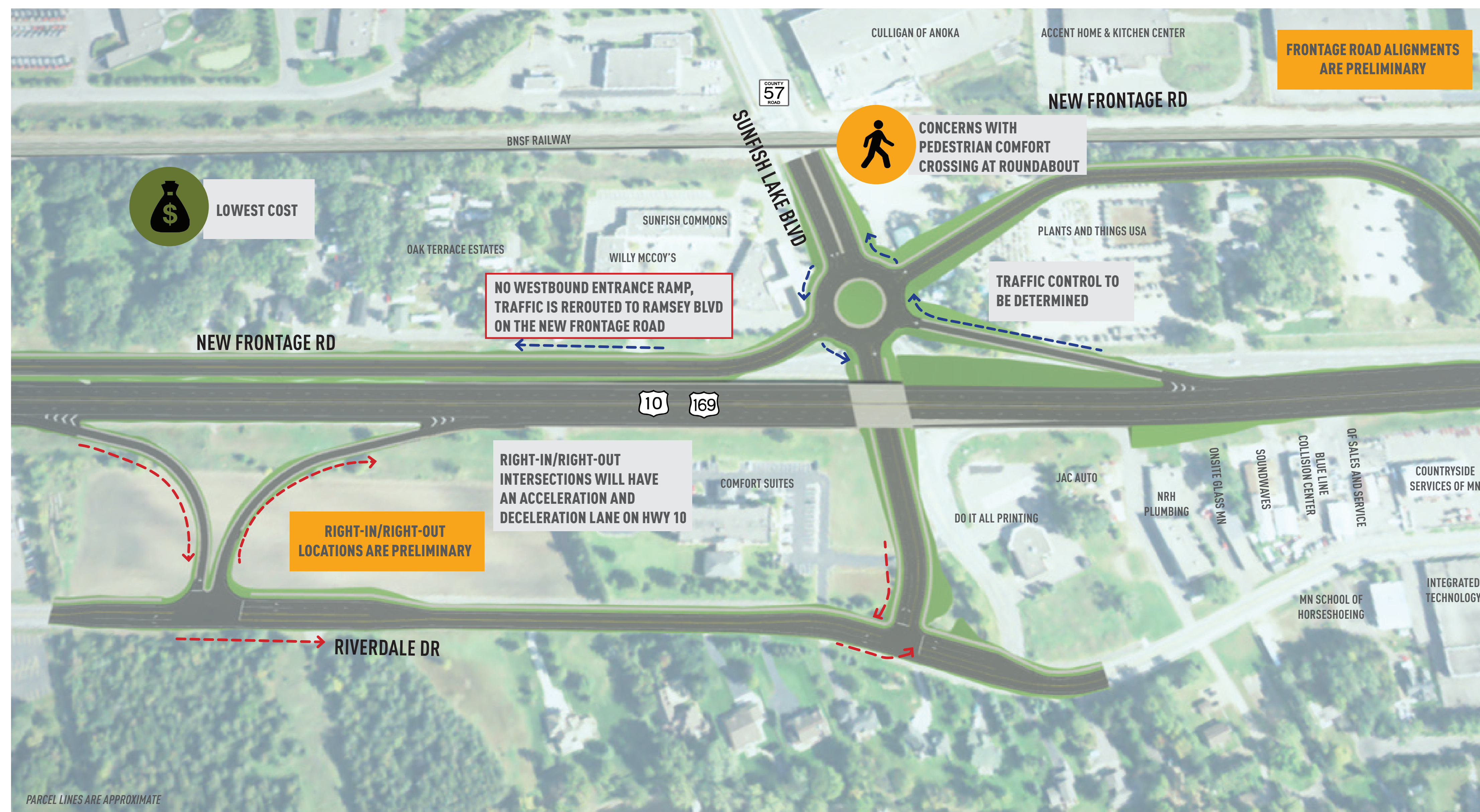


## TOP MEASURES

-  PEDESTRIAN EASE
-  BUSINESS EASE
-  PROPERTY IMPACTS
-  COST
-  RR GRADE SEPARATION



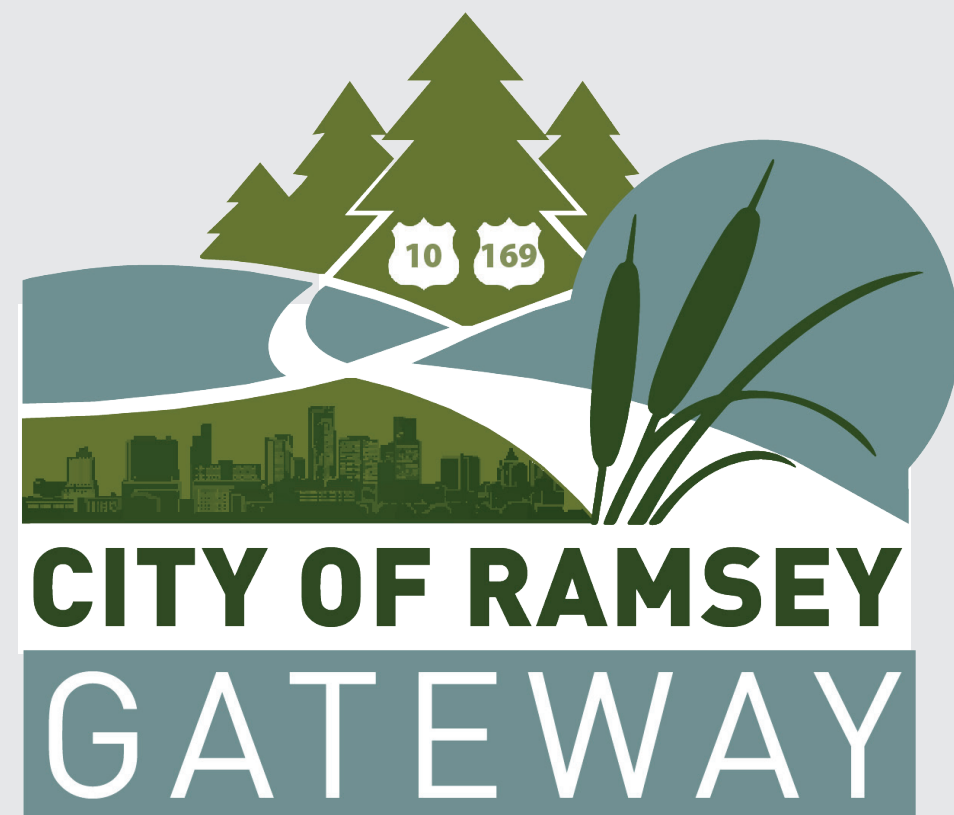
COLOR CODE BREAKDOWN



GREEN SHADING DENOTES POTENTIAL GRADING AREAS

\$34-38M





# SUNFISH LAKE BOULEVARD

## RIGHT-IN/RIGHT-OUT WITH ROUNDABOUT

### FULL ACCESS

OVERALL  
BENEFITS SCORE

70



## TOP MEASURES



PEDESTRIAN EASE



BUSINESS EASE



PROPERTY IMPACTS



COST



RR GRADE SEPARATION

1 - POOR

2 - FAIR

3 - GOOD

COLOR CODE BREAKDOWN

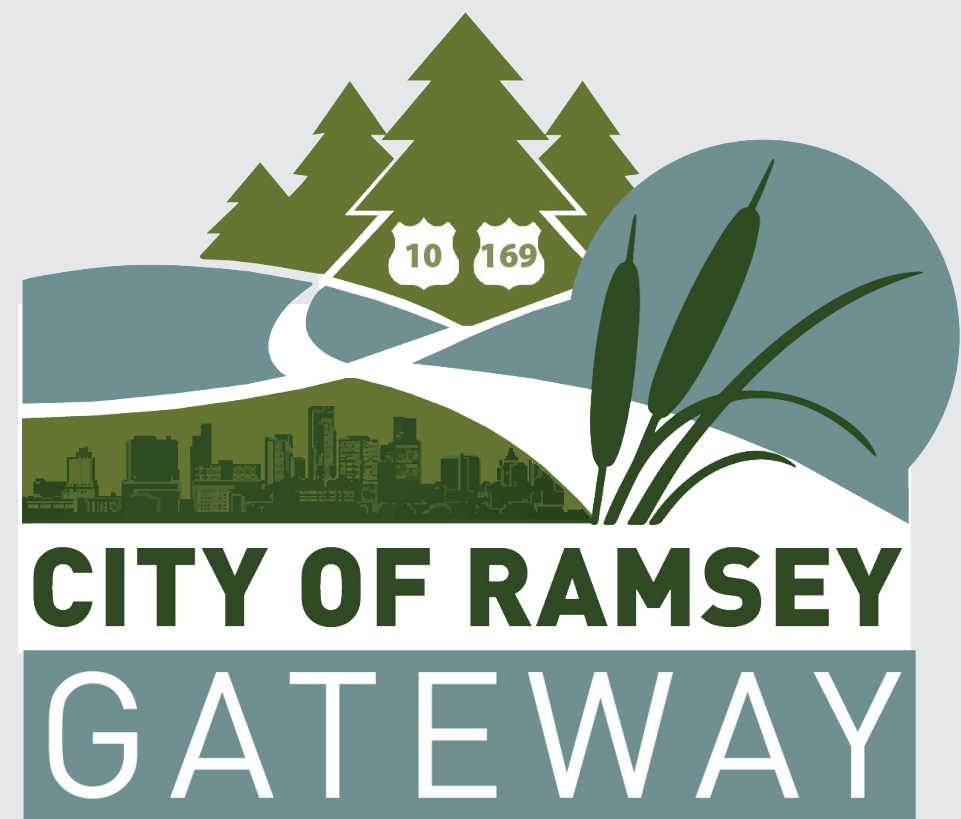
## EXAMPLE: BROOKLYN CENTER



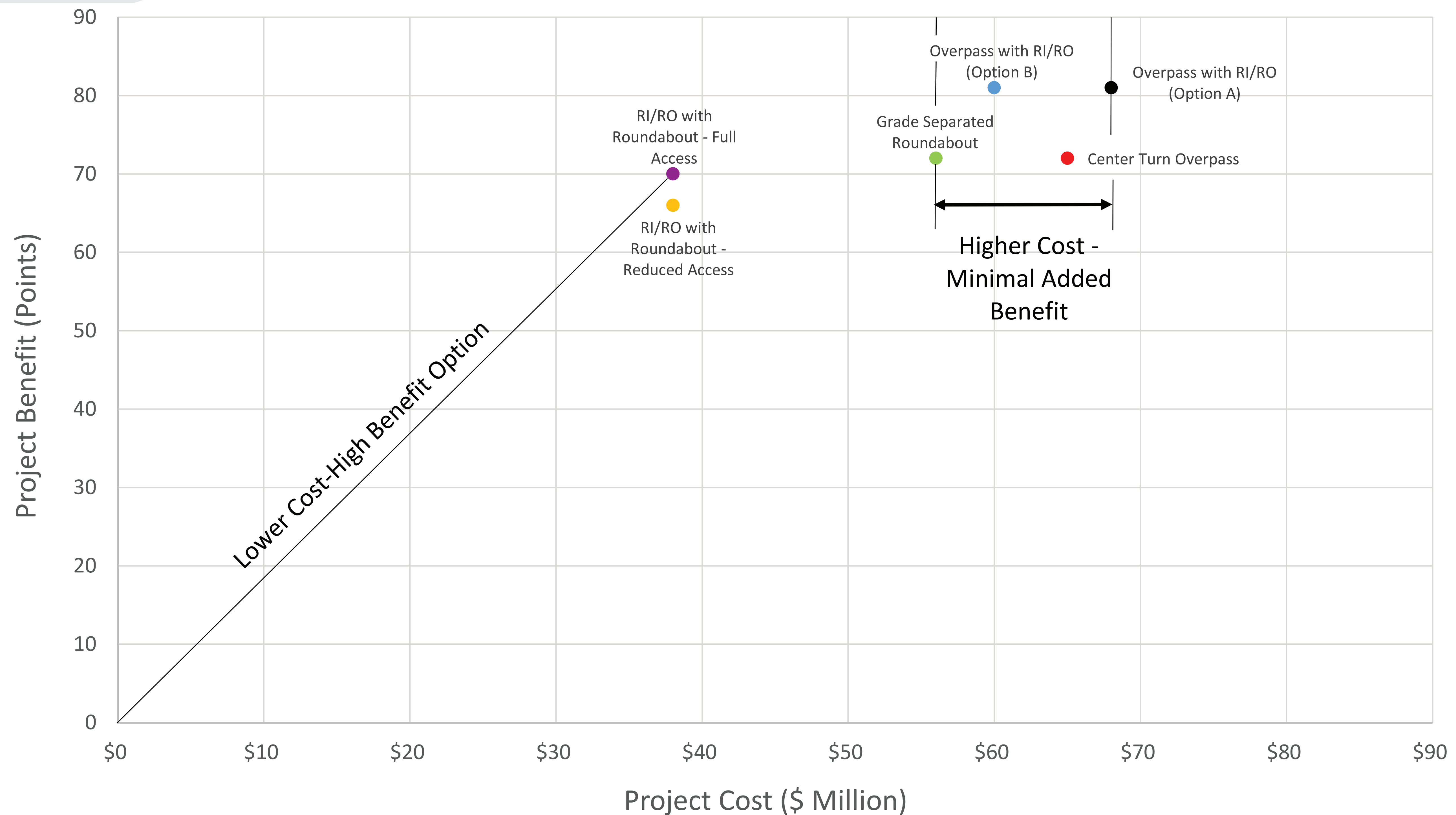
GREEN SHADING DENOTES POTENTIAL GRADING AREAS

\$34-38M

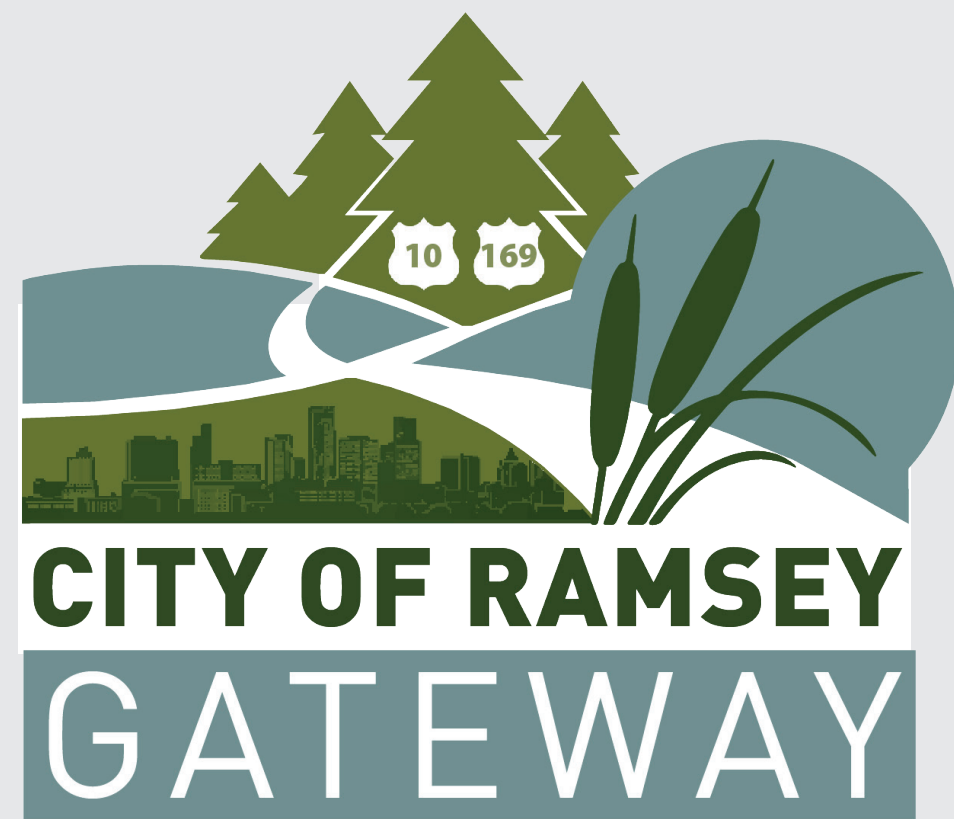




## SUNFISH LAKE BOULEVARD OPTIONS: COST-BENEFIT







# RAMSEY BOULEVARD

## TIGHT DIAMOND

OVERALL  
BENEFITS SCORE  
**82**

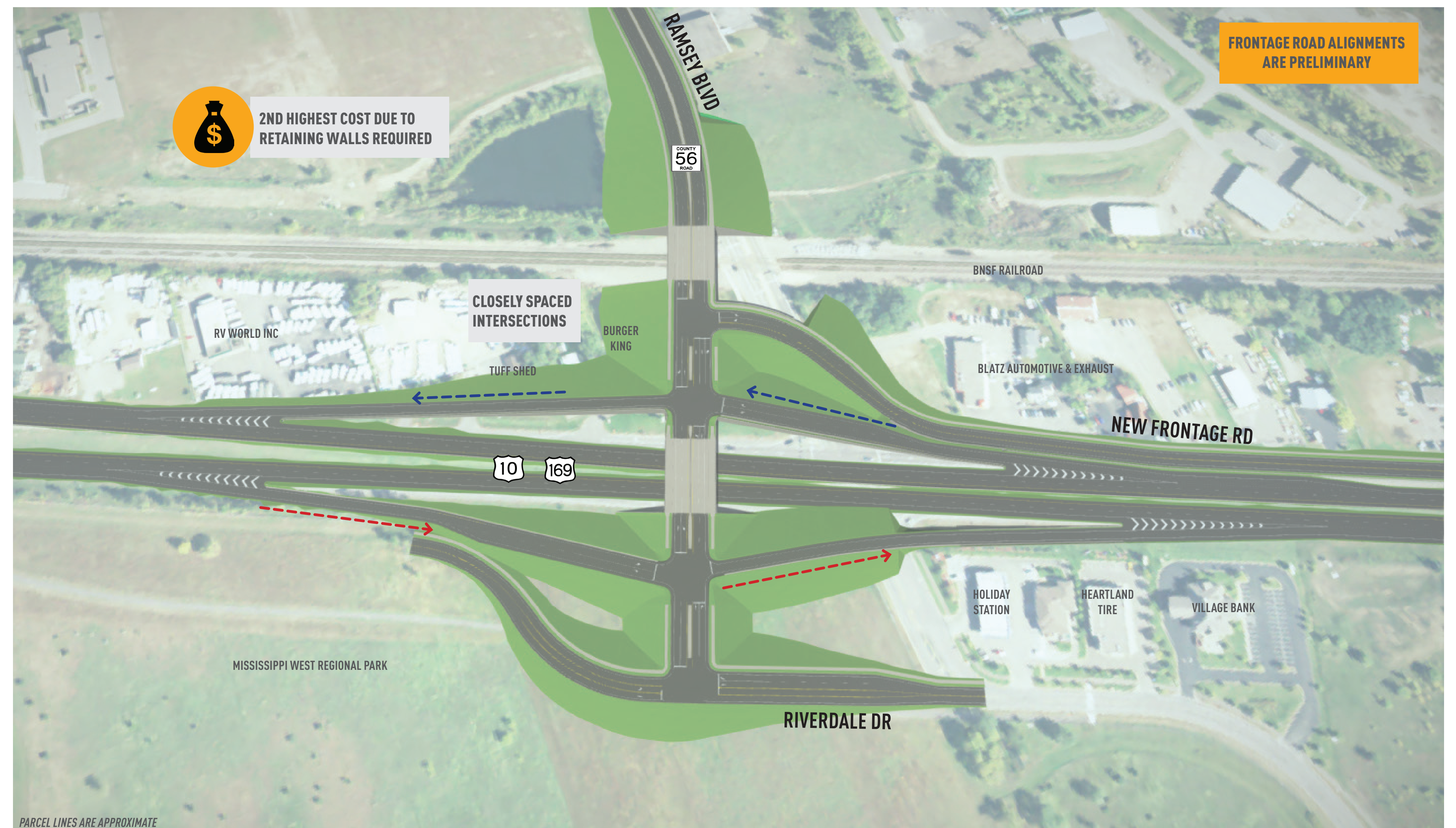


### TOP MEASURES

-  PEDESTRIAN EASE
-  BUSINESS EASE
-  PROPERTY IMPACTS
-  COST
-  RR GRADE SEPARATION



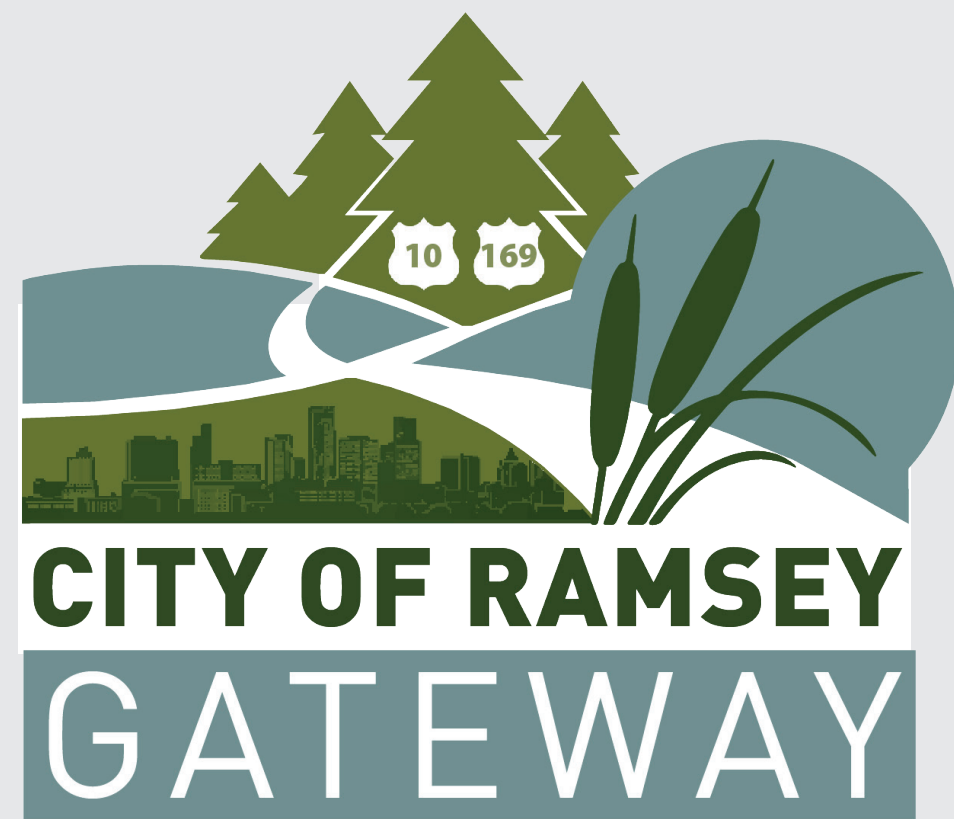
COLOR CODE BREAKDOWN



GREEN SHADING DENOTES POTENTIAL GRADING AREAS

**\$58-64M**





# RAMSEY BOULEVARD

## FOLDED WESTBOUND OFF TIGHT DIAMOND

OVERALL  
BENEFITS SCORE

82



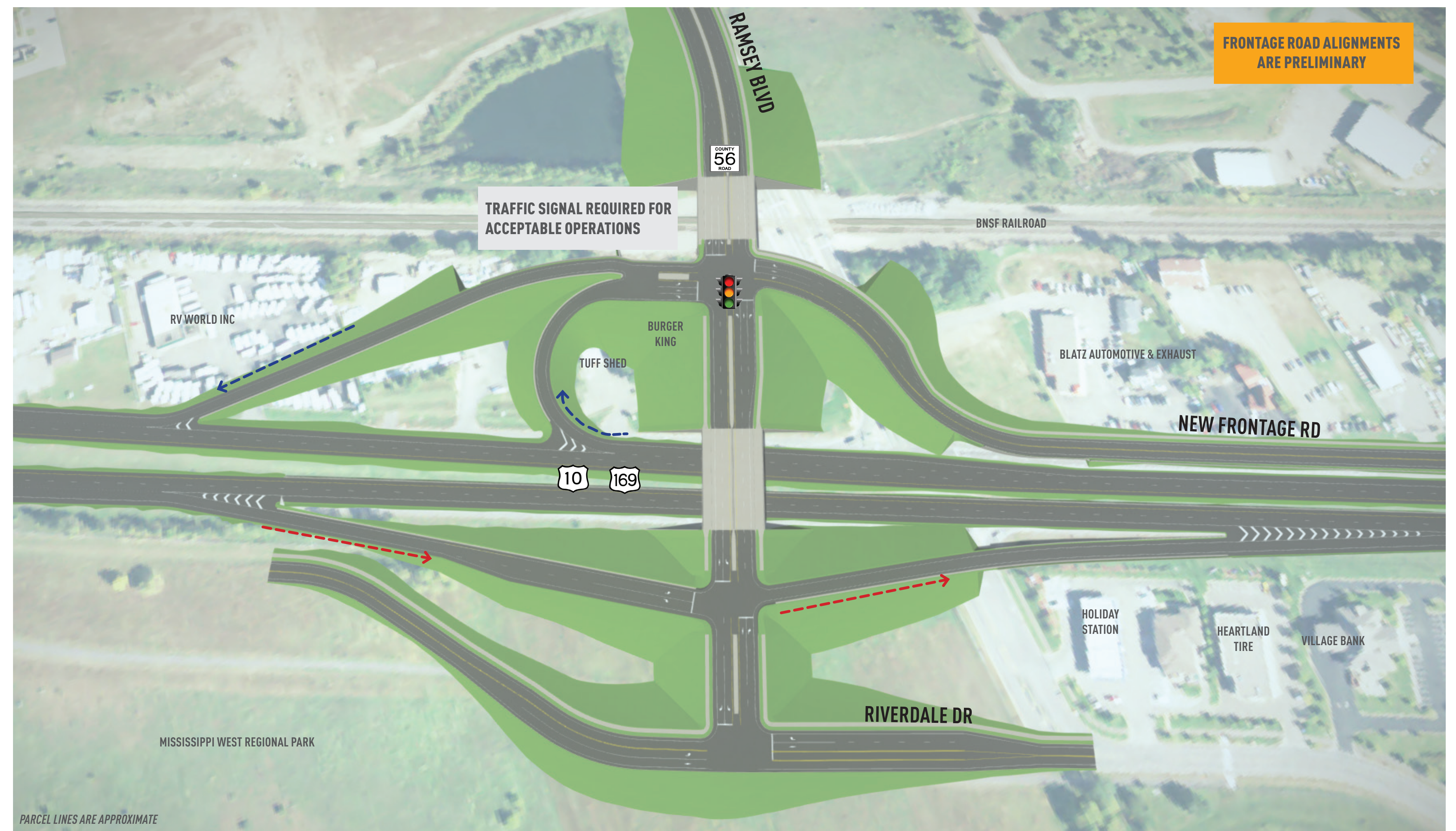
### TOP MEASURES

-  PEDESTRIAN EASE
-  BUSINESS EASE
-  PROPERTY IMPACTS
-  COST
-  RR GRADE SEPARATION

1 - POOR      2 - FAIR      3 - GOOD

COLOR CODE BREAKDOWN

EXAMPLE: PLYMOUTH / NEW HOPE

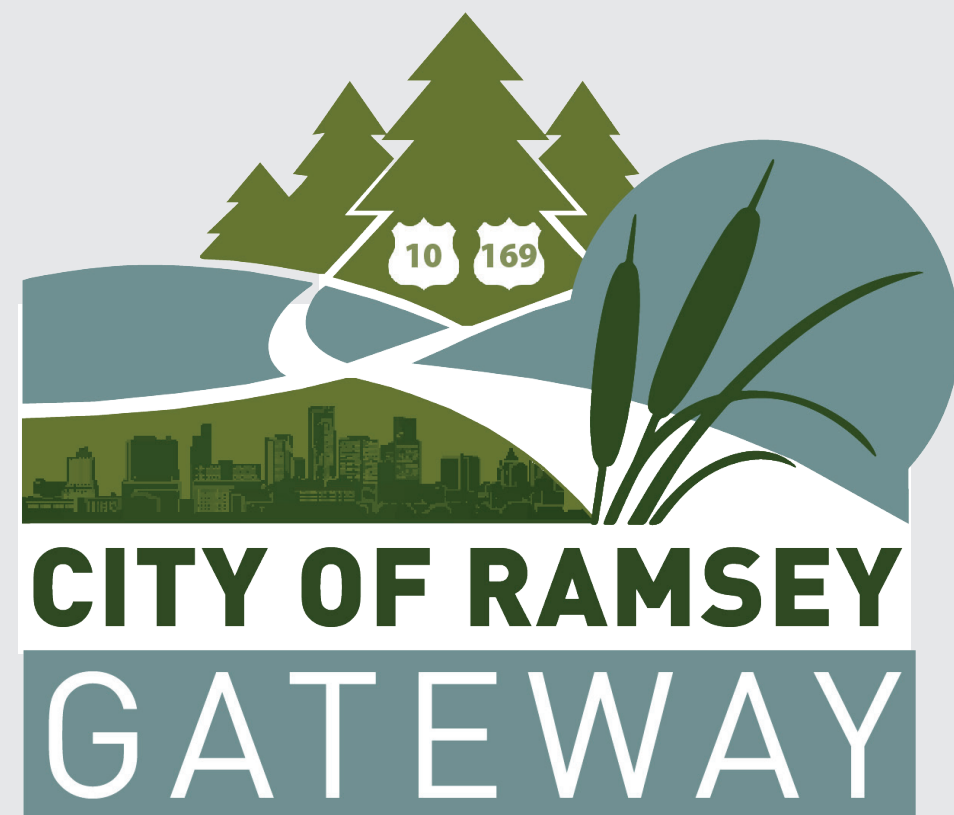


PARCEL LINES ARE APPROXIMATE

GREEN SHADING DENOTES POTENTIAL GRADING AREAS

\$52-58M





# RAMSEY BOULEVARD OVERPASS WITH RIGHT-IN/RIGHT-OUT

OVERALL  
BENEFITS SCORE

OPTION A

80

OPTION B

82



## TOP MEASURES

OPTION A

OPTION B



PEDESTRIAN EASE



BUSINESS EASE



PROPERTY IMPACTS



COST

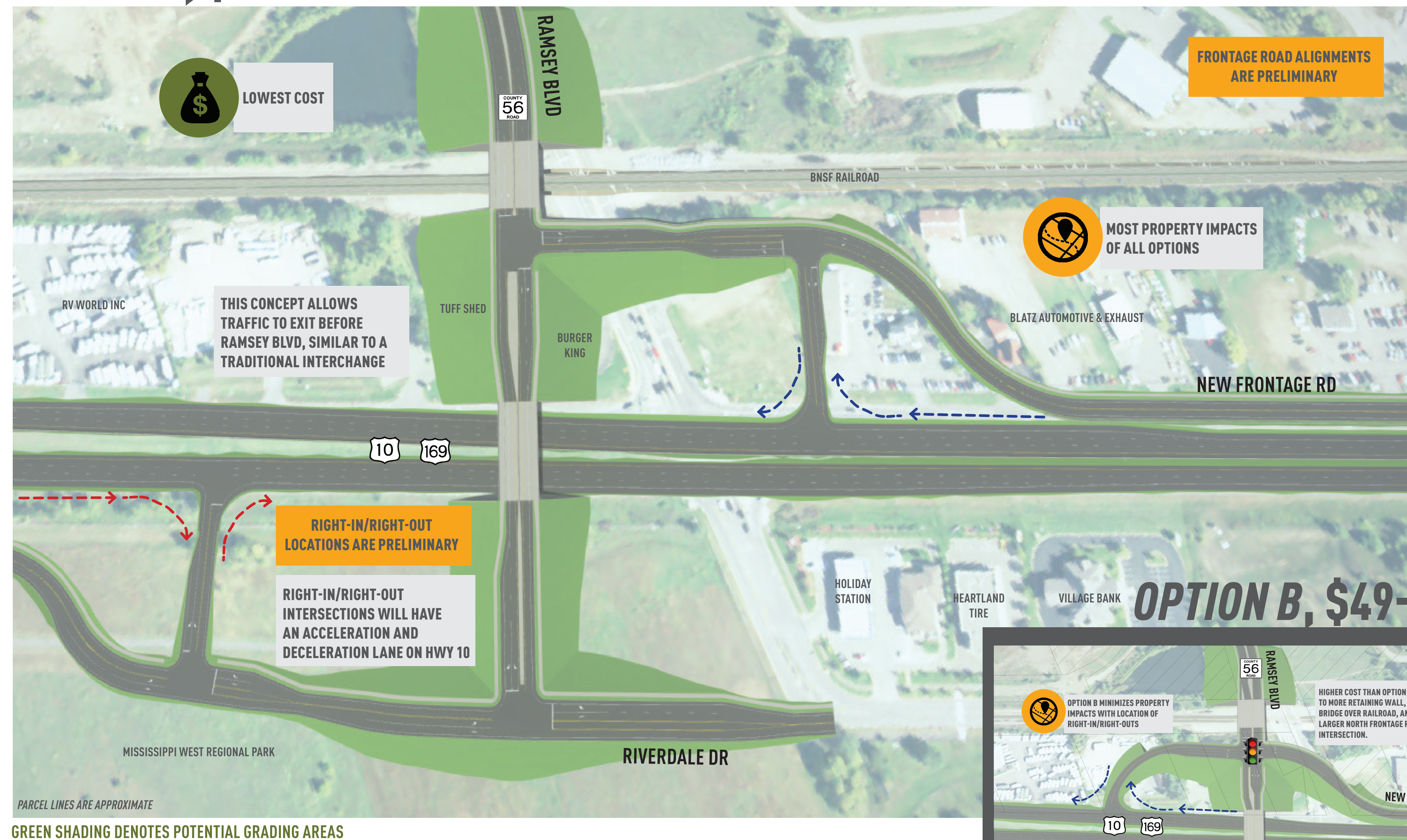


RR GRADE SEPARATION

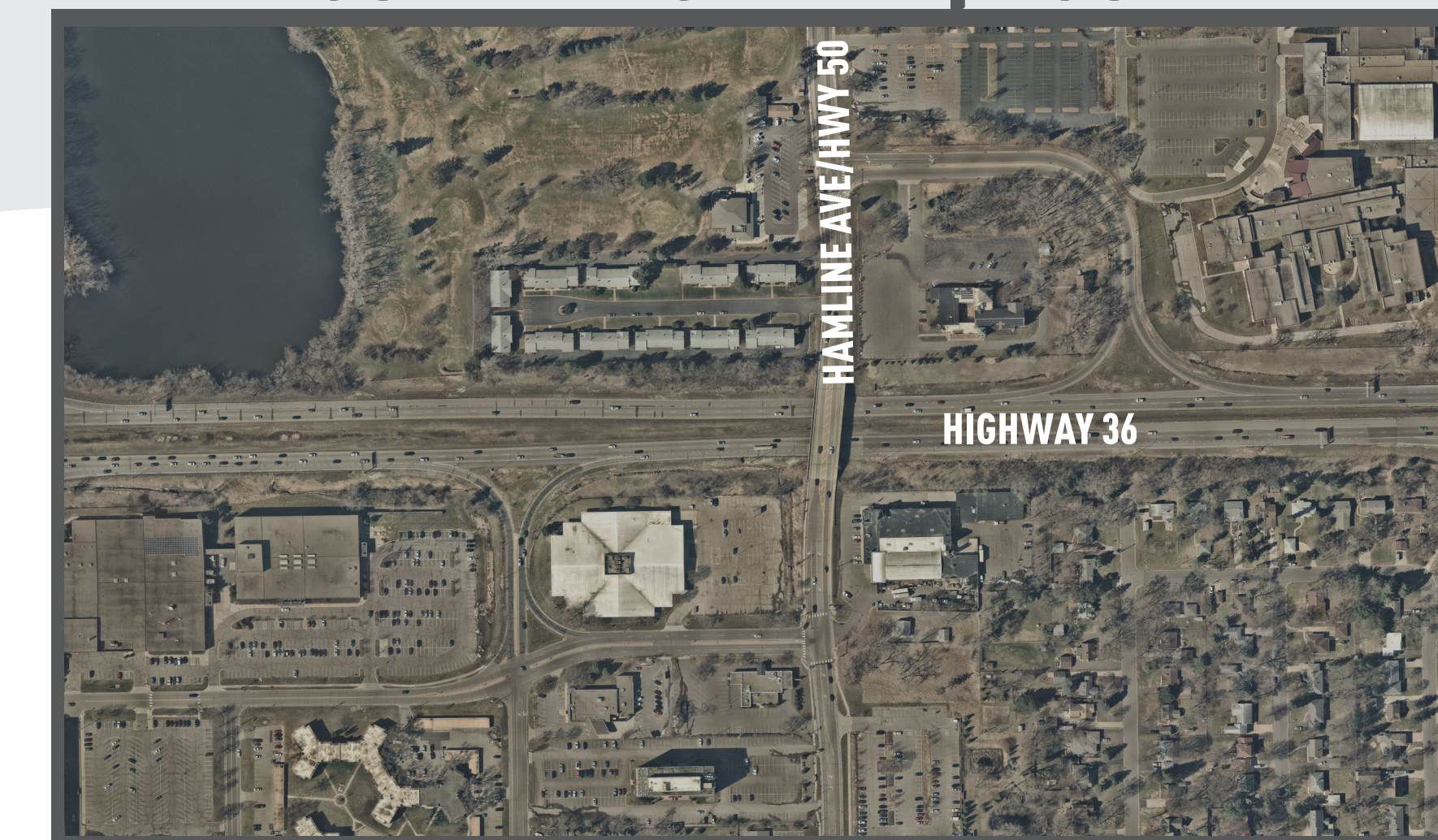


COLOR CODE BREAKDOWN

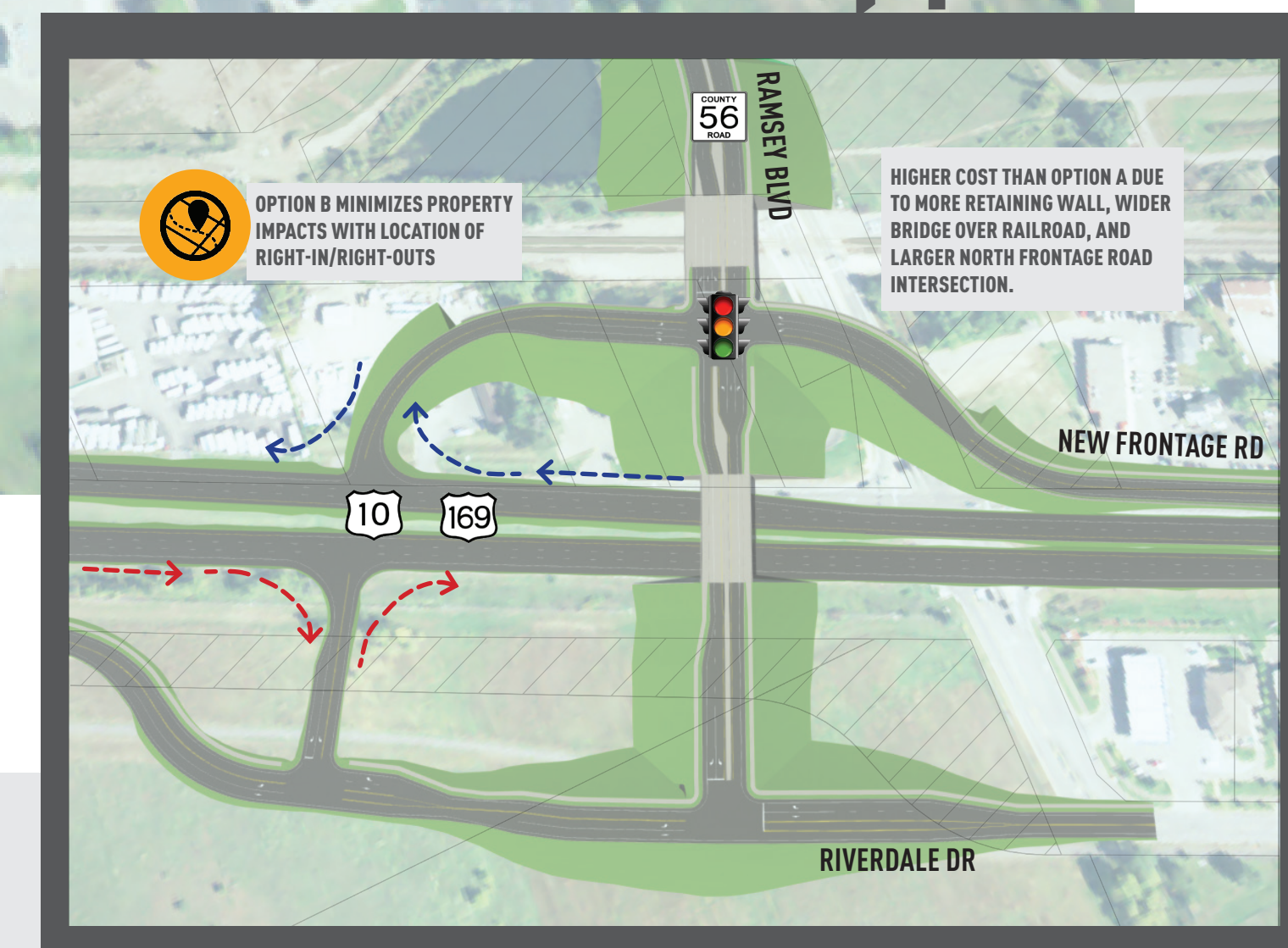
## OPTION A, \$46-51M



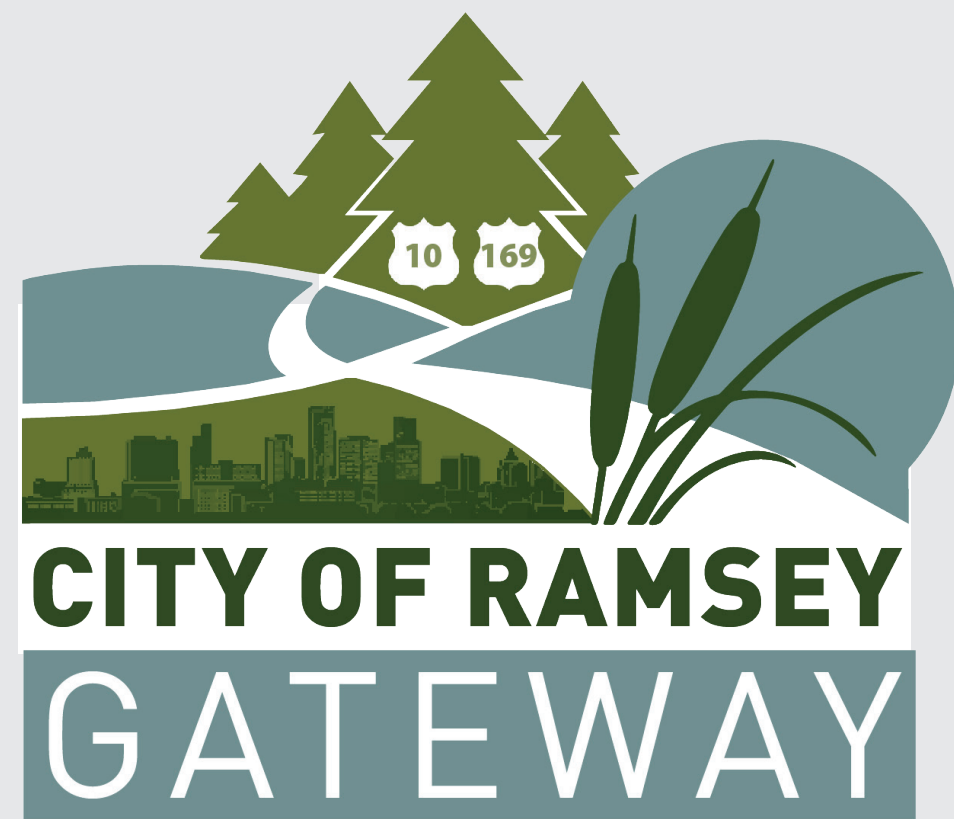
## EXAMPLE: ROSEDALE CENTER, ROSEVILLE



## OPTION B, \$49-54M







# RAMSEY BOULEVARD

## TIGHT DIAMOND WITH WEST FRONTAGE ROAD

OVERALL  
BENEFITS SCORE  
**79**

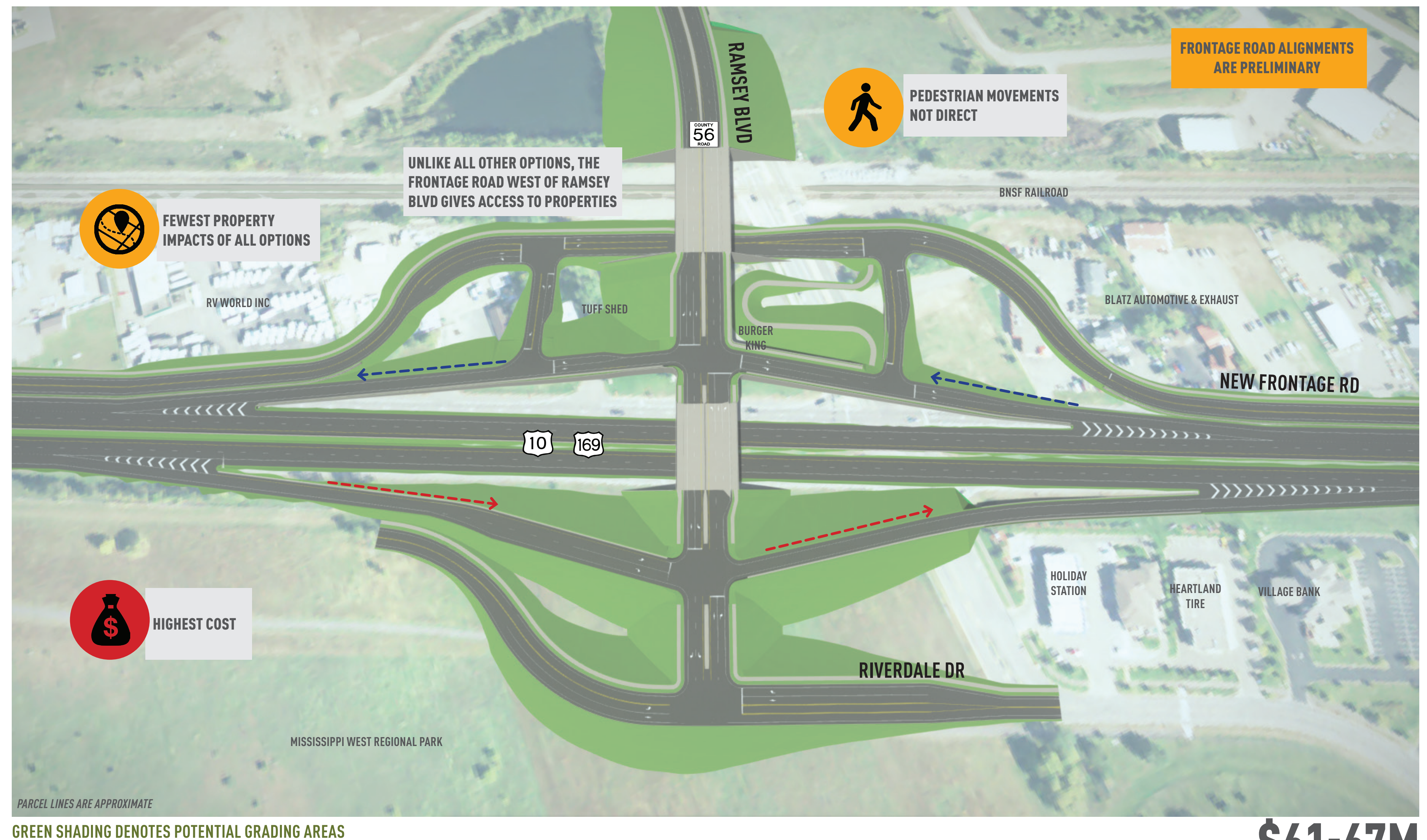


### TOP MEASURES

-  **PEDESTRIAN EASE**
-  **BUSINESS EASE**
-  **PROPERTY IMPACTS**
-  **COST**
-  **RR GRADE SEPARATION**



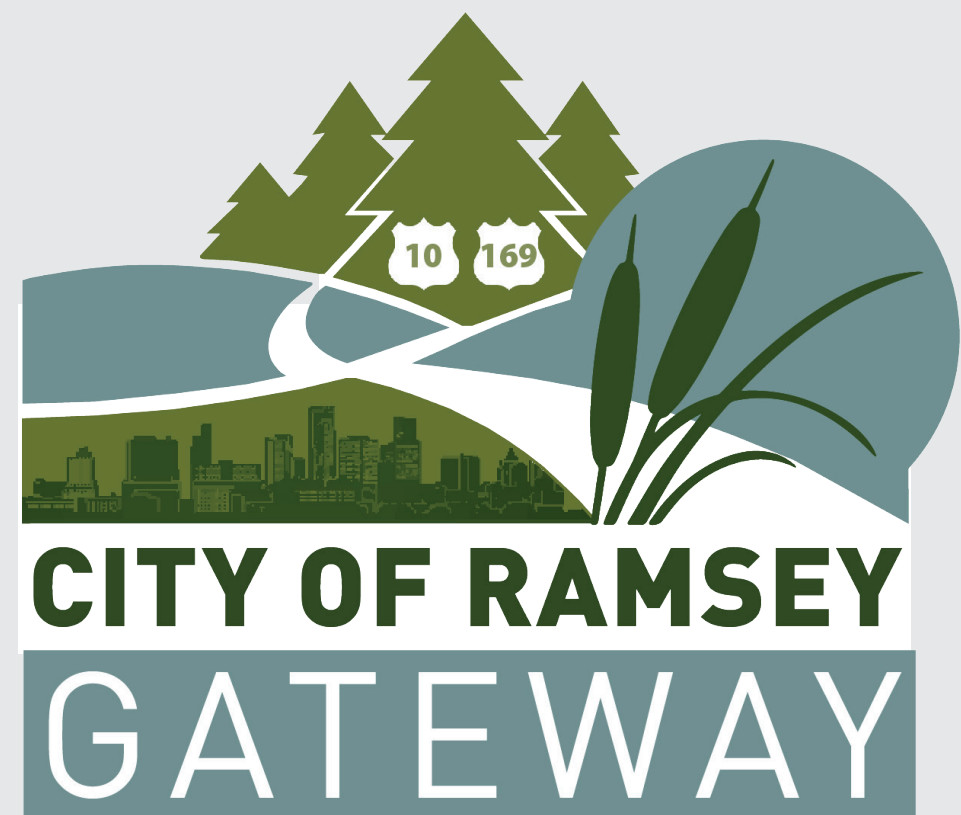
COLOR CODE BREAKDOWN



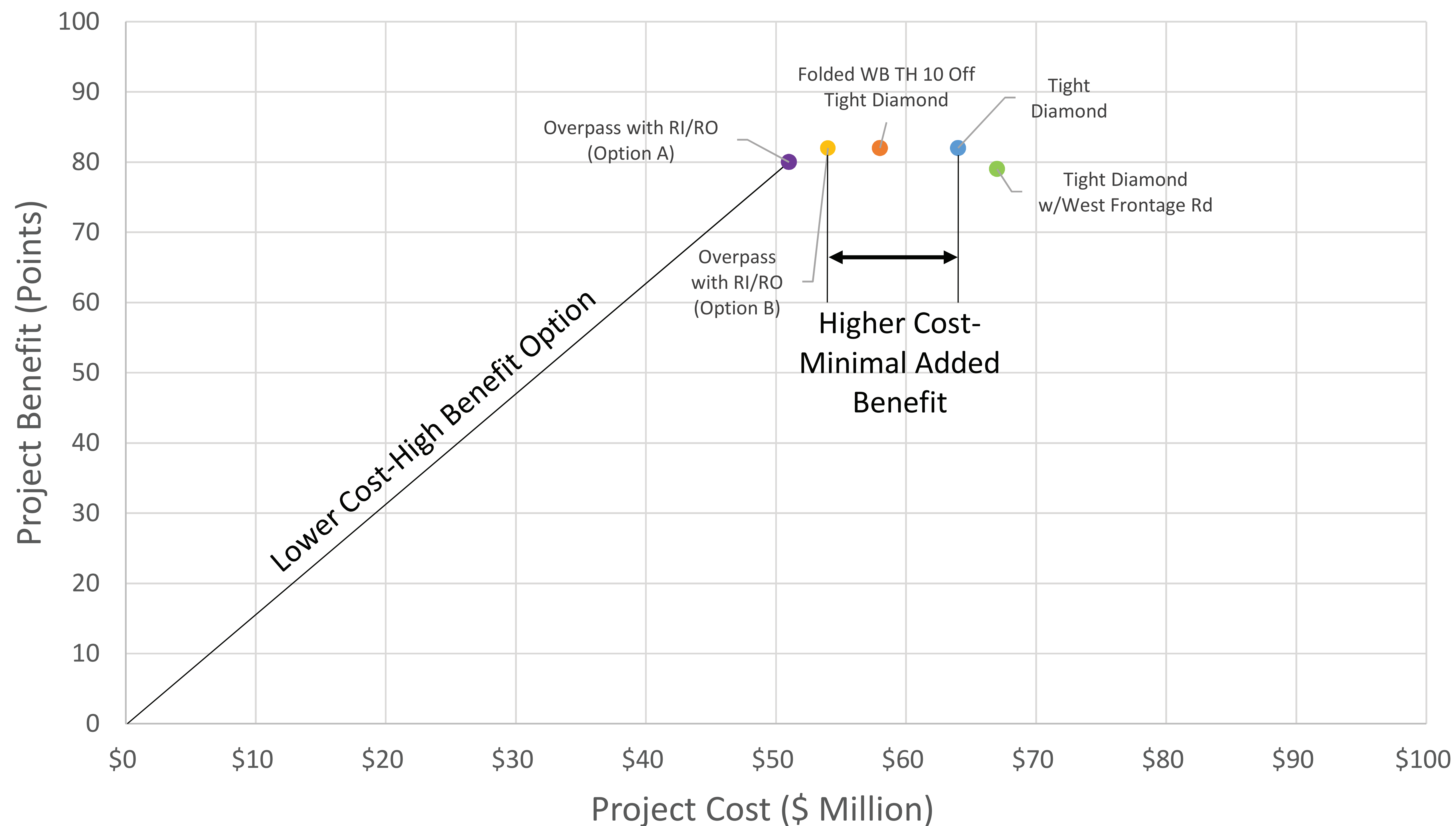
FRONTAGE ROAD ALIGNMENTS  
ARE PRELIMINARY

**\$61-67M**

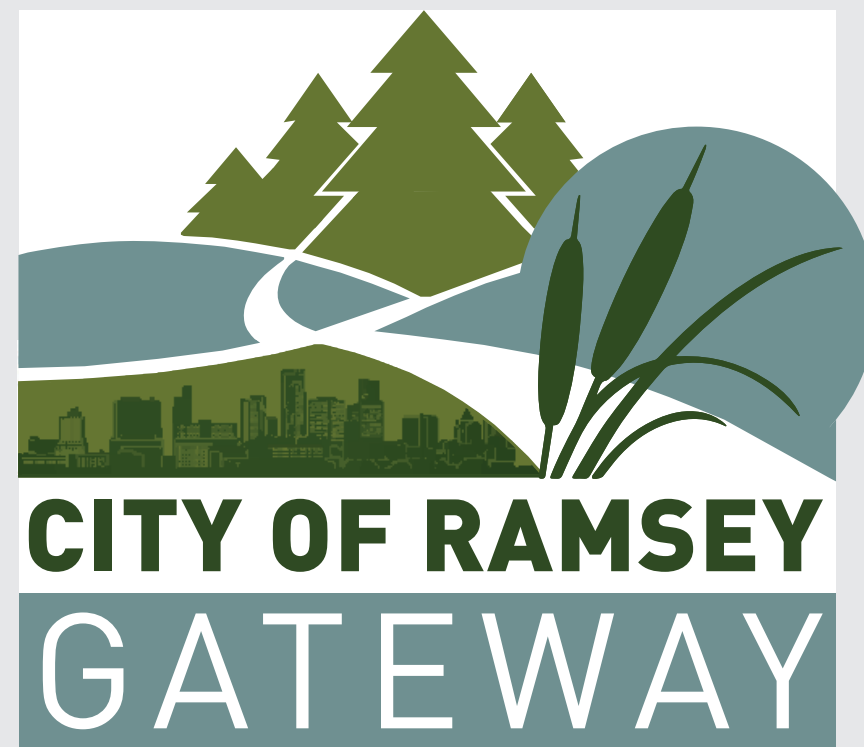




## RAMSEY BOULEVARD OPTIONS: COST-BENEFIT

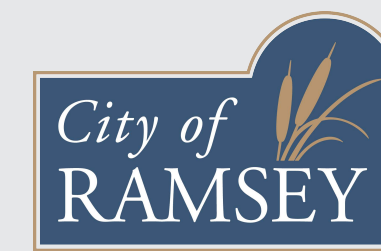






# WEST END AREA

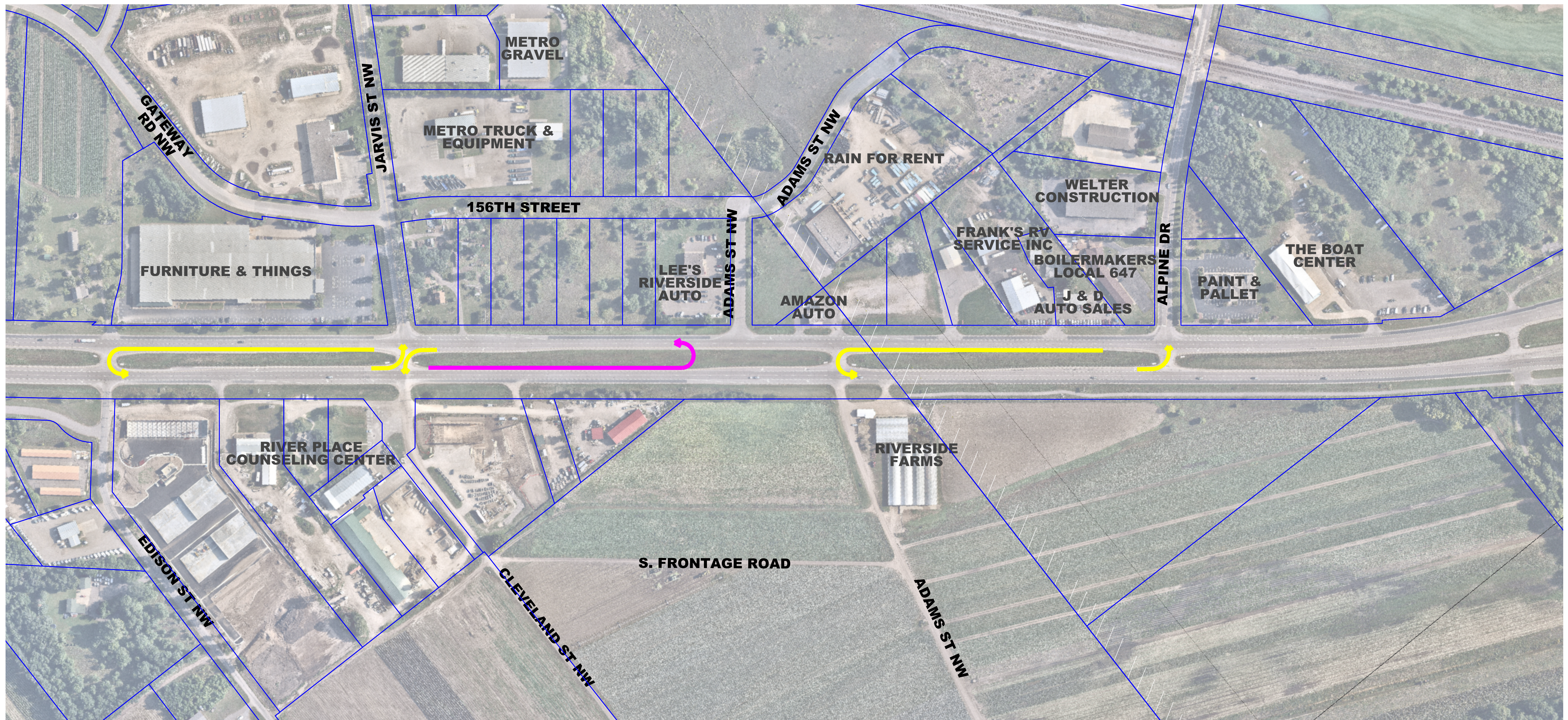
## JARVIS STREET & ALPINE DRIVE



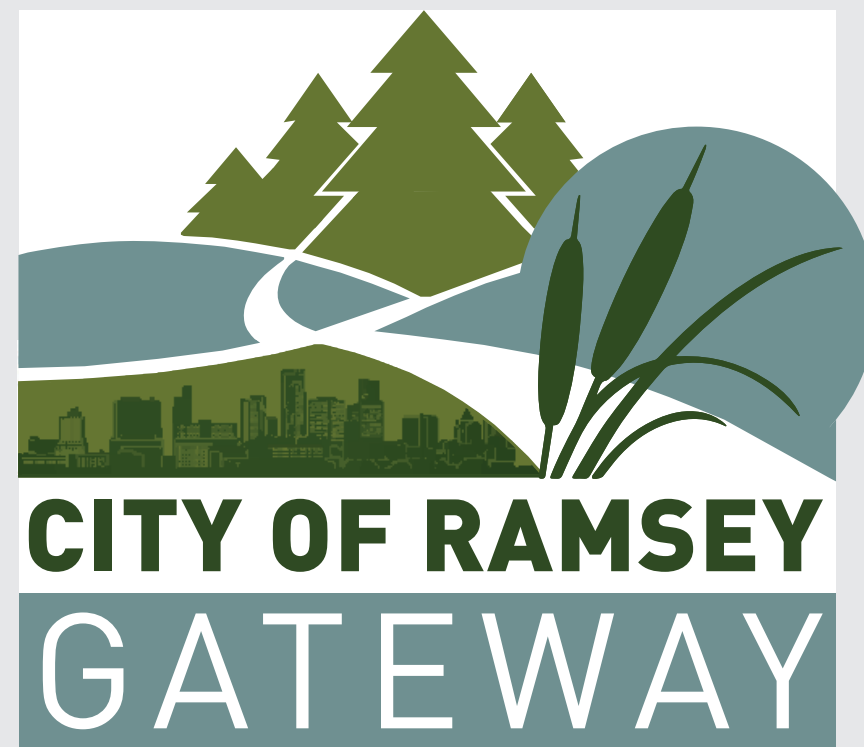
Anoka County  
MINNESOTA  
Respectful. Innovative. Fiscally Responsible.



### INTERIM OPTION - UNSIGNALIZED RCUT

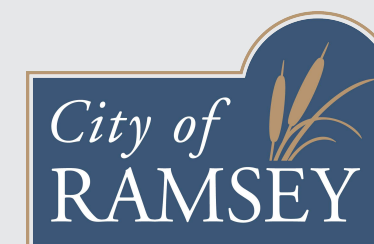






# WEST END AREA

## JARVIS STREET & ALPINE DRIVE

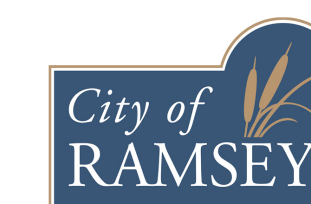
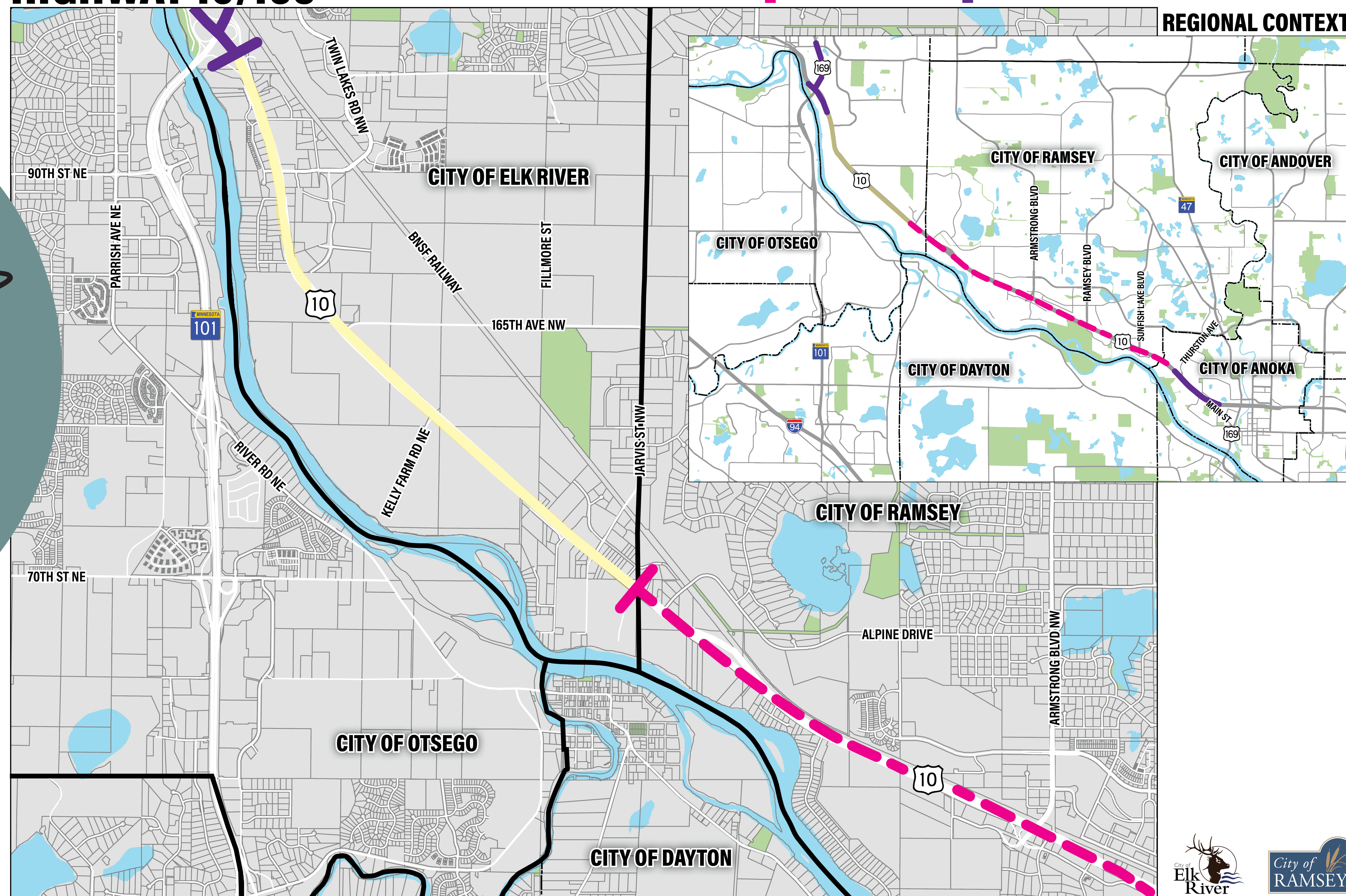


Anoka County  
MINNESOTA  
Respectful. Innovative. Fiscally Responsible.



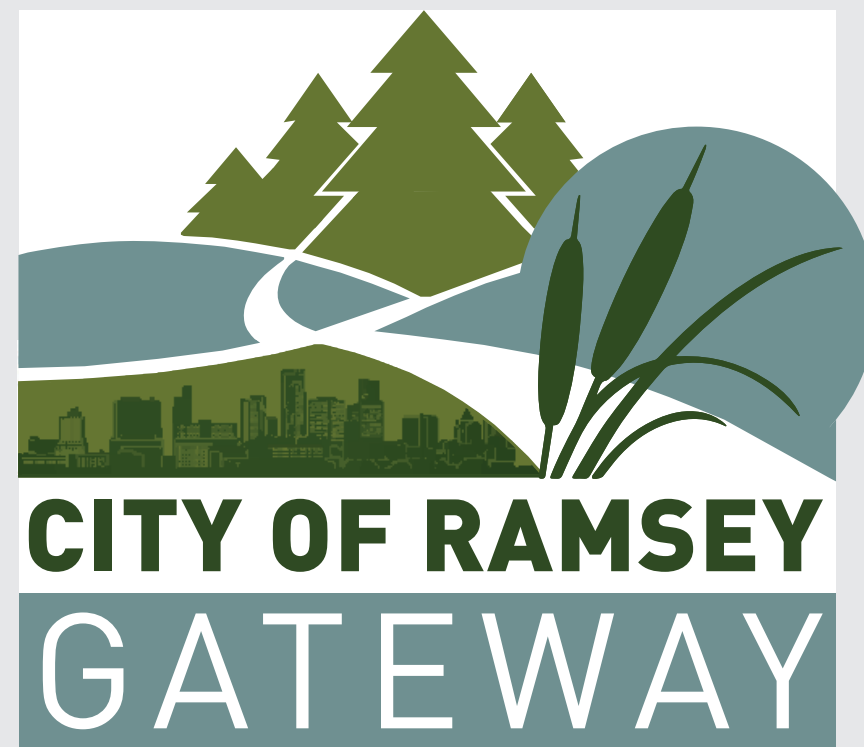
### HIGHWAY 10/169

— CITY LIMITS    UNDER STUDY    FUNDED PROJECT



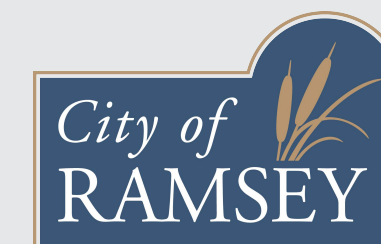
RAMSEYGATEWAY.COM



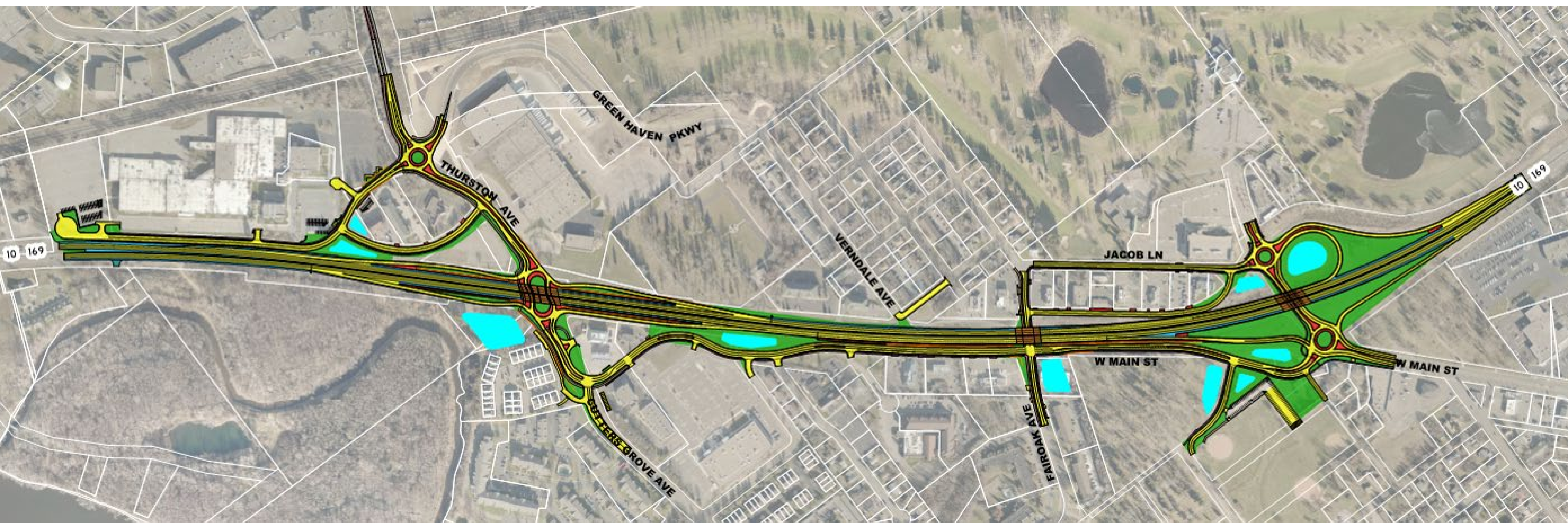


# ANOKA SOLUTION

## 2022 CONSTRUCTION



Anoka County  
MINNESOTA  
Respectful. Innovative. Fiscally Responsible.



[RAMSEYGATEWAY.COM](https://ramseygateway.com)