

City of Rice Lake

PRESERVING OUR FUTURE

COMPREHENSIVE PLAN ORDINANCE UPDATE

STEERING COMMITTEE MEETING #4

AUGUST 27, 2020

Today's Agenda

Introduction

Review Process

Plan Summary

Discussion Items

- Economy & Employment Goals
- Future Land Use Map
- Residential Classifications
- Other?

Next Steps/Schedule

The Process

Comprehensive Planning Process



Information Gathering

Community Survey
Project Website
Steering Committee
Public Open House



Developing the Comprehensive Plan

Steering Committee
Planning Commission
Staff and Consultants



Formal Approval

Planning Commission
(Public Hearing)
City Council

Comprehensive Plan Summary

Chapters in the Comprehensive Plan

1. Introduction
2. Land Use
3. Transportation
4. Utility Infrastructure
5. Natural Resources
6. Parks, Recreation, and Open Space
7. Economy and Employment
8. Implementation



CHAPTER ONE INTRODUCTION

Overview

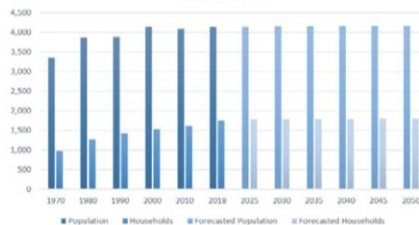
Rice Lake's Comprehensive Plan is the City's foundational policy document for planning for the future. It is a tool for guiding growth, redevelopment, and development in Rice Lake. This plan identifies places where change is needed and sets the type of land use and location to meet the needs of the community. The plan has the larger effect of influencing the character of the community and the quality of life in Rice Lake. Together, the City and its residents came together to create a plan for:

"PRESERVING OUR FUTURE"

The Comprehensive Plan consists of a series of interrelated elements that work collectively to create a plan for the future, including:



Historical and Forecasted Population and Households



01

A Vision For Rice Lake

City of Rice Lake, with its recreational amenities and rich rural character, strives to provide a well-balanced, secure, and enjoyable living environment for citizens of all ages. As a friendly, quiet, family oriented community, the citizens of the City appreciate and respect the needs of their neighbors. Families will raise their children in safety, peace and quiet, away from the congestion and noise of the city. The City will work together with its residents to sustain moderate commercial, residential and recreational growth, while making sure not to alter the existing character of the City. Proactive decision-making, and the provision of services on the part of the City will maintain the existing quality of life.

Goals

The planning process identified a set of overarching goals to expand on the vision statement and to guide the preparation of the Comprehensive Plan.

Guide Land and Manage Growth



Land Use Variety and Character



Protect Natural Resources



Economic Opportunities



Introduction

§ Vision/Goals

§ Using the Plan

§ Demographics

CHAPTER THREE TRANSPORTATION

Transportation Plan

The purpose of the Transportation Plan element is to provide guidance to the City of Rice Lake for decisions regarding the nature of roadway infrastructure improvements necessary to achieve safety, adequate access, mobility, and performance of the existing and future roadway system. The primary goal of this plan is to establish local policies, standards, and guidelines to guide major transportation investments and policy decisions. To accomplish these objectives, the Transportation Plan provides information about:

The functional hierarchy of streets and roads related to access and capacity requirements

Non-motorized transportation

Transit

Aviation

The plan recommends the City of Rice Lake work with St. Louis County, Arrowhead Transit, and other regional agencies to address the recommendations put forward in this plan.

Functional Street Types

Table T-1 – Standards for Functional Street Types

	Arterial	Collector	Local
Location	At neighborhood edges	On edges or within neighborhoods	Within neighborhoods
Property access to street	Limited	Spaced access	Direct access
Traffic control	Signals & stop signs where warranted	Signals & stop signs where warranted	Traffic control/calming where warranted
On-street parking	Not permitted	Restricted by width	Restricted by width
Land use connections	Inter-city	Connects neighborhoods	Connects blocks
System connections	To arterials	To arterials/collectors	To collectors/locals
Service performed	Long trips	Within city – links to rural county	Short trips within city
Traffic volume (trips/day)	3,000-10,000	500-3,000	< 500

03

Goals



As new development or redevelopment occurs, provide an integrated, internally-connected, efficient street system.



Ensure Rice Lake's system of local roadways is well coordinated with MN DOT and St. Louis County roadway system.



Encourage the development of a multi-modal transportation system.



Support the development of regional and local transit options.



Preserve the safety of regional air traffic.

Transportation

§ Description of System

§ Maps

§ Transit

§ Aviation

Natural Resources

- § Description of System
- § Landscape
- § Soils
- § Water

CHAPTER FOUR NATURAL RESOURCES

Natural Environment

The natural environment is among Rice Lake's most important assets because it provides recreational and economic opportunities as well as habitat for fish and wildlife. Protection and enhancement of natural resources can directly benefit people through protection of drinking water sources and supporting industries such as agricultural, forestry and tourism. Quality of life is also better, which is attractive to potential residents and increases land values. The challenge for the community is to adopt and implement regulations and programs that accommodate land uses while conserving the quality of the natural environment.

The overall goal of the City of Rice Lake is to protect and enhance natural resources such as lakes, forests, and wildlife. This chapter provides information about:

The Landscape



Soils



Water Resources



04

Goals



Design future development to limit encroachment into wetlands and other sensitive natural areas.



Ensure high water quality of surface water and groundwater to assist in providing an adequate supply, presently and in the future.



Ensure healthy forests to benefit the community through their providing improved air and water quality.

CHAPTER FIVE PARKS, RECREATION & OPEN SPACE

Recreational Amenities

The City of Rice Lake prides itself on providing a healthy variety of recreational amenities and rural opportunities for its residents and visitors. A key component of the vision for the community and park system is to maintain the character and feel of the community, provide sustained moderate growth, and meet the needs of a changing population, all while maintaining the existing quality of life.

This chapter summarizes survey results related to the City's parks and trails compiled as part of the comprehensive planning process, identifies and summarizes recreational facilities and the amenities offered at each location, and provides recommendations and funding opportunities for the growth of the parks and trails system in Rice Lake.

Table P-3 – Park Amenities by Location

	Park Size (Acres)	Walking/Hiking Trails	Picnic Facilities	Shelter/Building	Boat Launch	Restroom	Sharing Bank	Playground	Bailecks	Courts	Boat/Fishing/Water	Mowed Open Space	Nature Preserve	Dog Park
Local Public Parks														
Town Park	20	X	X	X	X	X	X	X	X	X	X	X	X	
Homecroft Elementary								X	X	X	X	X		
Rice Lake Public Boat Access	1			X	X						X		X	
Regional Parks and Trails														
Lake Park Athletic Complex	100	X						X						
Canosis State Wildlife Management Area	2500	X									X		X	
Hartley Nature Center	660	X					X						X	
C.J. Ramstad/North Shore Trail	150 mi	X												

Goals



Provide accessible recreational opportunities to accommodate people with varying abilities and the various age groups represented in the community.



Retain all existing park lands for the use and enjoyment of residents.



Encourage the incorporation of outdoor recreational amenities into the design of new subdivisions and development sites, especially Planned Unit Developments.



Continue the development of Non-Motorized Trail System within the city for the purposes of recreational enjoyment, connectivity, and safety.



Work in cooperation with local and adjoining governmental agencies and private recreational groups in providing parks, recreational facilities, trail connections and programming.



Increase the public awareness of recreational opportunities that exist for residents.



Celebrate and promote recreation within the city.

05

Parks, Recreation & Open Space

§ Park Facilities

§ Recommendations for Improvements

Utility Infrastructure

- § Water Supply
- § Sanitary Sewer
- § Surface Water
- § Recommendations for Improvements

CHAPTER SIX UTILITY INFRASTRUCTURE

Utility Systems

The purpose of the Utility Infrastructure chapter is to prepare for existing system needs while planning for potential future growth and development. Public utilities that provide water resources and sanitation collection are essential in community life and future community development. As the population, industry and commercial services develop and communities needs increase, it is important to ensure that demand for these services does not exceed the supply.

Water Supply

The City of Rice Lake water utility system consists of infrastructure components that perform storage, treatment, distribution and fire supply functions. Drinking water is currently supplied by the City of Duluth for the City of Rice Lake water utility distribution system. The City of Duluth collects and treats water from Lake Superior and provides water to the adjacent communities of Rice Lake, Hermantown and Proctor. The system will provide a long-term quality water supply for the community for the foreseeable future.

Sanitary Sewer Collection

The City of Rice Lake sanitary sewer system collects waste from individual residents and businesses located in the southern service area. The City of Rice Lake had eleven (11) wastewater pumping lift stations until recently. City wastewater pumping lift stations move the collected waste flows to the two Western Lake Superior Sanitary Sewer District (WLSDD) meter pumping stations, which convey the flows through interceptor lines to the main WLSDD wastewater treatment facility located in Duluth on the St. Louis River.

Surface Water Management

All surface waters within the municipal boundaries of Rice Lake eventually flow into Lake Superior through three local water sheds. The main storm water components for the City consist of road and driveway culverts which convey storm surface waters along existing drainage patterns. As development or land activities occur adjacent to or with runoff to the wetlands, creeks and lake water bodies, antidegradation protection steps need to be taken to reduce pollutants contributing to water quality degradation.

06

Goals



Determine areas of utility service for new development or redevelopment, providing an efficient utility system.



Ensure Rice Lake's utility system has the capacity and is coordinated with suppliers City of Duluth (water) and receivers WLSDD (wastewater) and St. Louis County (stormwater) systems.



Where possible look at eliminating the number of sewer lift stations within the system.



Strive for a balanced water supply with adequate storage and looping for systems supply redundancy.



Provide adequate centralized water storage for balanced pressure zone across the community.



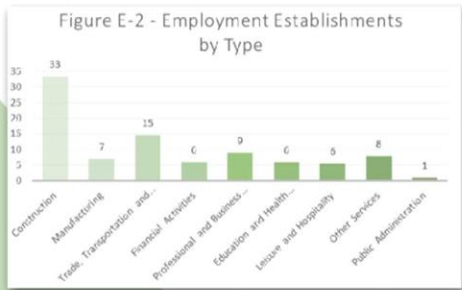
Minimize number of stormwater facilities within the community.

CHAPTER SEVEN ECONOMY & EMPLOYMENT

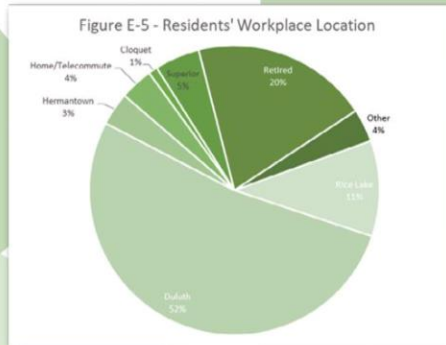
Rice Lake's Economy

Economy and employment are a key part of any thriving community. Rice Lake's economy is an integral piece of the Duluth area regional economy. This economic connection will continue to be based on commuting and regional economic factors. This chapter of the Comprehensive Plan is intended to report on local economic and employment issues and opportunities.

Employment Establishments:



Workplace Location:



07

Goals



Support and expand the City's existing economic base.



Provide adequate land and infrastructure to make locations within Rice Lake attractive to businesses.

Economy & Employment

- § Describes Current Conditions & Data
- § Employment
- § Employers
- § Income

Implementation

- § Tools for Implementation
 - § Official Controls
 - § Funding Mechanisms
- § Amendments
- § Action Plan Worksheets

CHAPTER EIGHT IMPLEMENTATION

Implementation Planning

The Comprehensive plan creates a vision for the City of Rice Lake and guides land use and infrastructure improvements so the City can meet the community's future needs. However, the vision can only be realized if the plan is used. Tools to implement the plan will vary in that some will be reactive such as zoning and subdivision ordinances that guide private developments and others will be proactive, such as the City's Capital Improvement Program (CIP) for undertaking public improvement projects. To achieve the goals and objectives of this Comprehensive Plan, the City of Rice Lake has established regulations for zoning, subdivision of land, planned unit developments (PUD), shoreland and floodplain areas. All are administered through the City's Planning and Zoning Department.

Amending the Plan

To keep the Comprehensive Plan current, it will be necessary to make amendments from time to time. However, as the foundational document guiding development, most amendments should occur through a comprehensive effort to address changes to the community overtime. The Action Plan, described below, is a tool that can and should be amended more frequently.

08

Action Plan Worksheets

Implementing the vision and goals of the Comprehensive Plan requires an action plan, and the coordination and investments of many stakeholders. The Action Plan tables present a concise summary of the goals along with specific action steps, organized by chapter. The table includes:



GOAL:
A restatement of the specific goal.



ACTION STEP:
Specific action items intended to help meet the goals.



TIMELINE:
The timeline is divided into 4 categories: Short-Term, Mid-Term, Long-Term and Ongoing. The applied category indicates when the action item might begin and is advisory in nature.



The Action Plan Worksheets will be updated on a regular basis as part of other City processes, such as annual budgeting or project prioritization sessions. The Action Steps and Timeline sections of the worksheets are intended to be flexible and adaptable over short periods of time, so changes to these sections do not require a formal amendment to the Comprehensive Plan. The goals, however, are high level, long-term goals. Changes to the specific goals will require an amendment to the overall plan.

Discussion Items

Discussion
Item #1

Economy & Employment Goals

- Are the goals too progressive

Current Goals

GOAL: SUPPORT AND EXPAND THE CITY'S EXISTING ECONOMIC BASE.

Objectives:

- Work with existing businesses to remain or expand on their current sites or to relocate to more appropriate sites.
- Use the City's tools of zoning, capital improvement plans, and transportation plans to support development.
- Ensure that city processes and regulations related to land development, permits, and construction are easy to understand.

GOAL: PROVIDE ADEQUATE LAND AND INFRASTRUCTURE TO MAKE LOCATIONS WITHIN RICE LAKE ATTRACTIVE TO BUSINESSES.

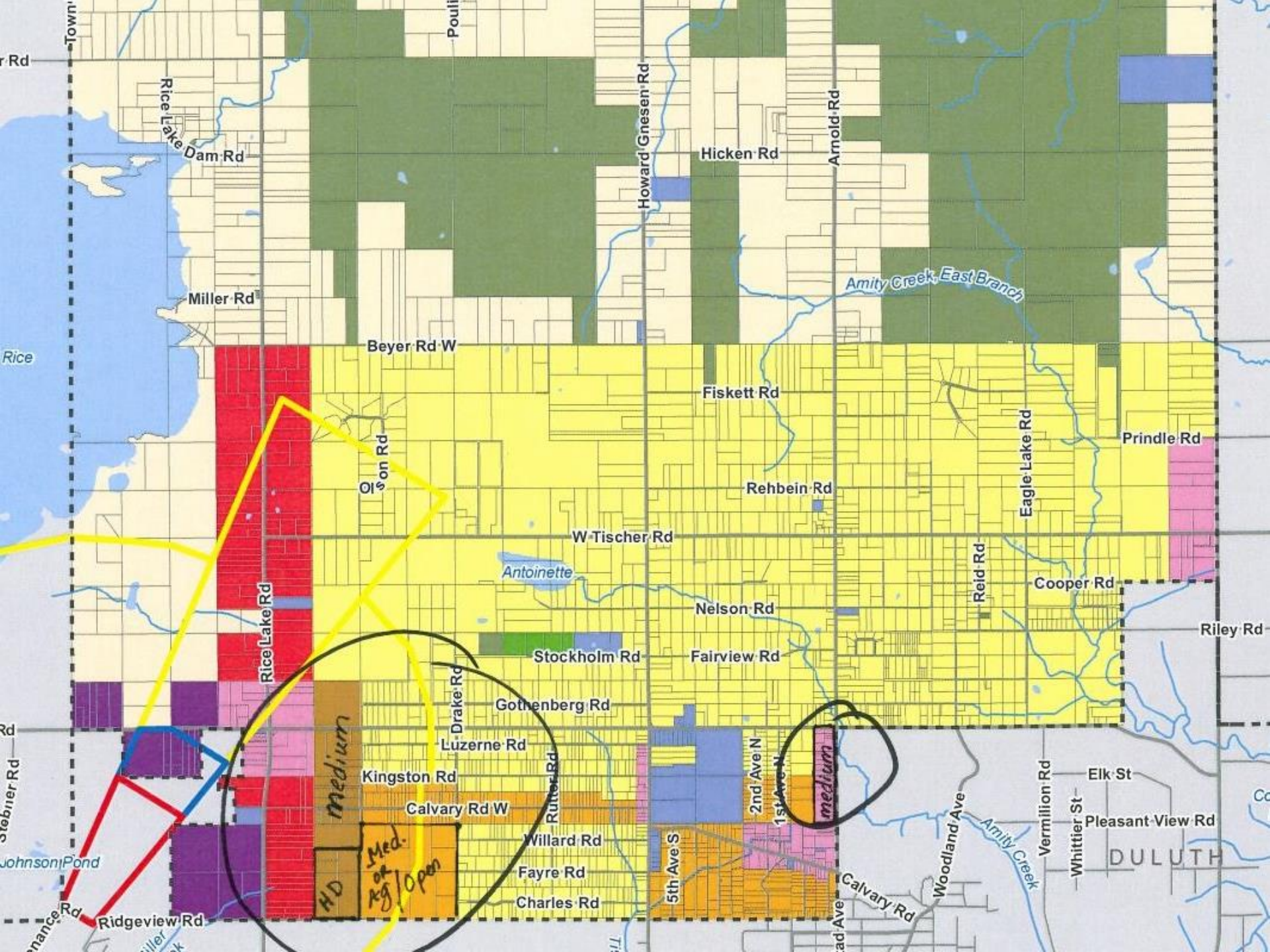
Objectives:

- Ensure an adequate supply of land for business location and target new areas for businesses in the Land Use Plan.
- Plan for and expand public utilities and streets to the industrial park area when needed and when financially feasible.

Discussion
Item #2

Future Land Use Map

- Planning Commission
Recommended Changes




Discussion
Item #3

Residential Classifications

- Include the minimum lot size in each classification?

Residential Classifications

Classification	Minimum Lot Area	Standard Uses
Rural Residential	4.5 acres	<ul style="list-style-type: none">• Single family dwellings• Agricultural uses
Low Density Residential	2.5 acres	<ul style="list-style-type: none">• Single family dwellings• Attached single family (2-4 unit buildings)• Agricultural uses
Medium Density Residential	1 acre	<ul style="list-style-type: none">• Single family dwellings• Duplexes (with municipal sewer & water)• Agricultural uses
High Density Residential	2 acres	<ul style="list-style-type: none">• <i>New District Required</i>



Other Issues for
Discussion?

Next
Steps/Schedule

Project Initiation

- Develop Website
- Distribute Community Survey
- Establish Steering Committee

Steering Committee #2

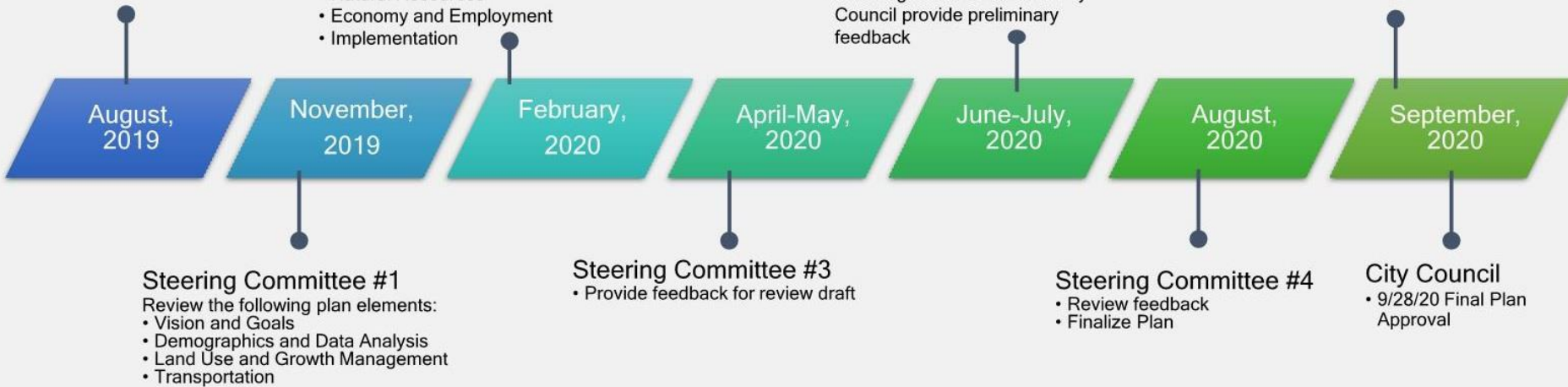
- Review the following plan elements:
- Infrastructure
 - Parks, Trails and Open Spaces
 - Natural Resources
 - Economy and Employment
 - Implementation

Community Open House

- Receive Public Feedback on Draft Plan
- ### Draft Plan Review
- Planning Commission and City Council provide preliminary feedback

Planning Commission

- 9/15/20 Public Hearing on Comprehensive Plan



Timeline