

Neighborhood Meeting: *Wastewater Infrastructure Mitigation Project*

November 13, 2024





Project Summary

- 1 Full replacement of two lift stations** serving the Scout Park sewershed
Underground piping improvements around both lift stations to connect to existing infrastructure
Emergency power generation for both lift stations
- 4 Funded through FEMA HMA grant**



Project Team



Owner



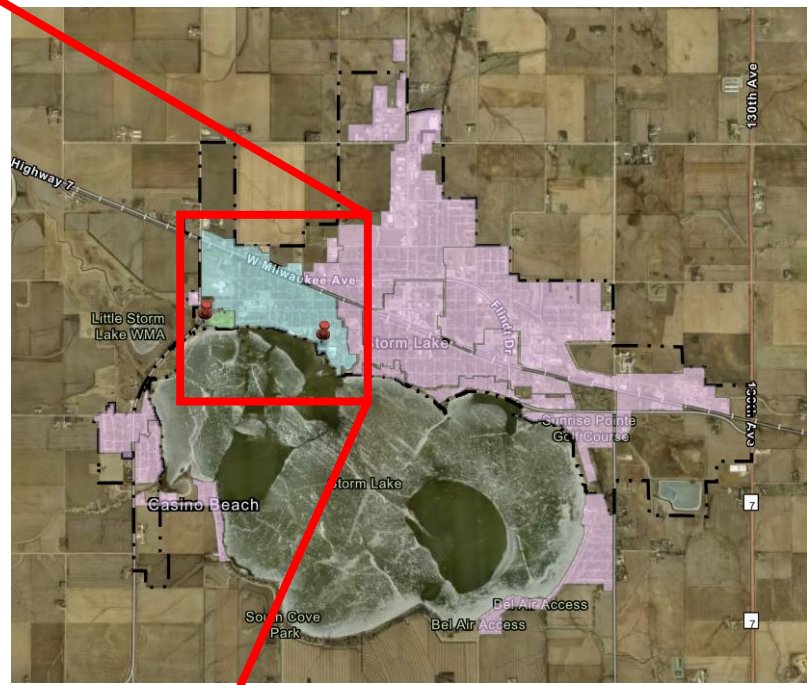
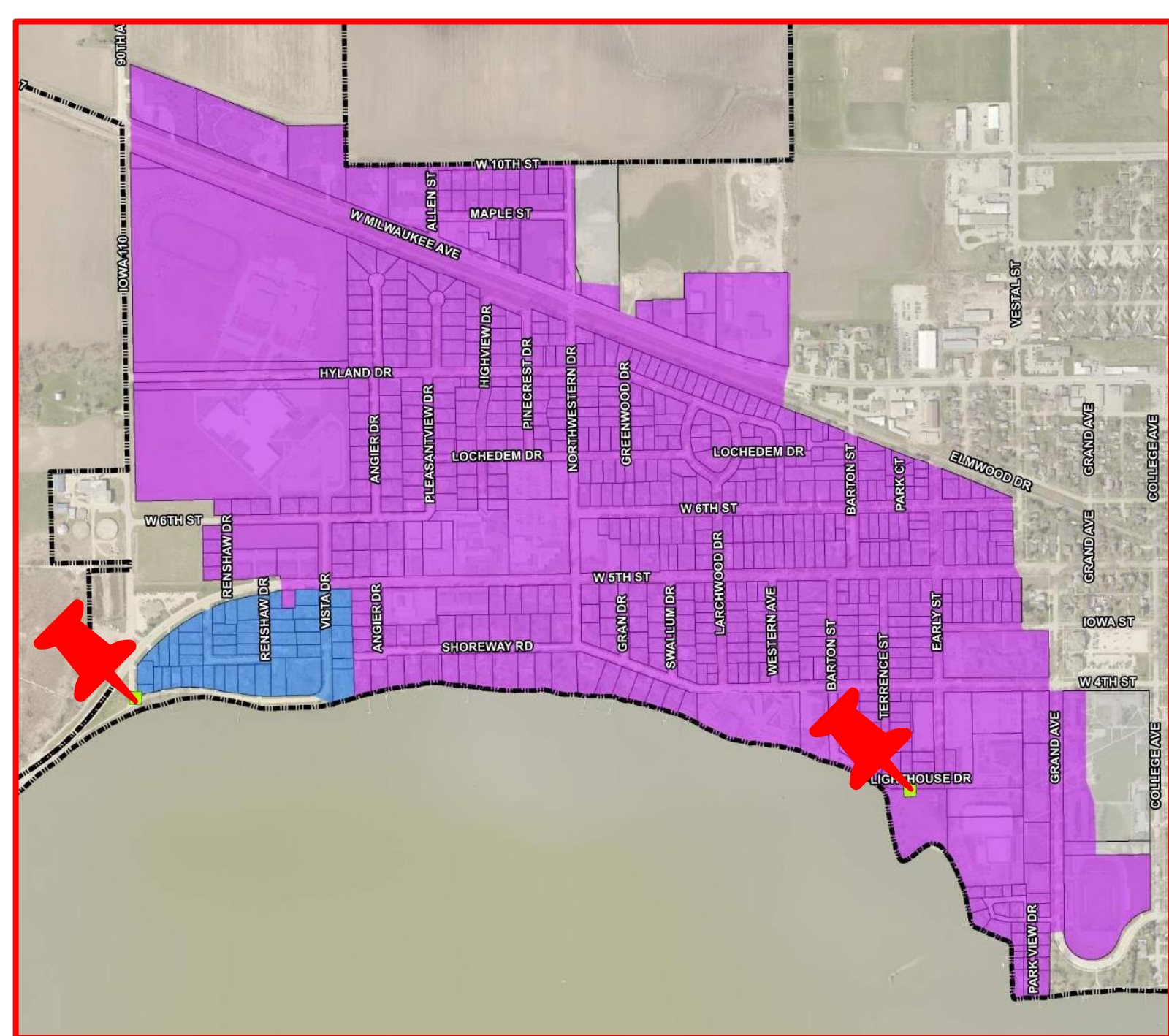
Real People. Real Solutions.

Engineering Consultant



General Contractor





Location Map

Scout Park

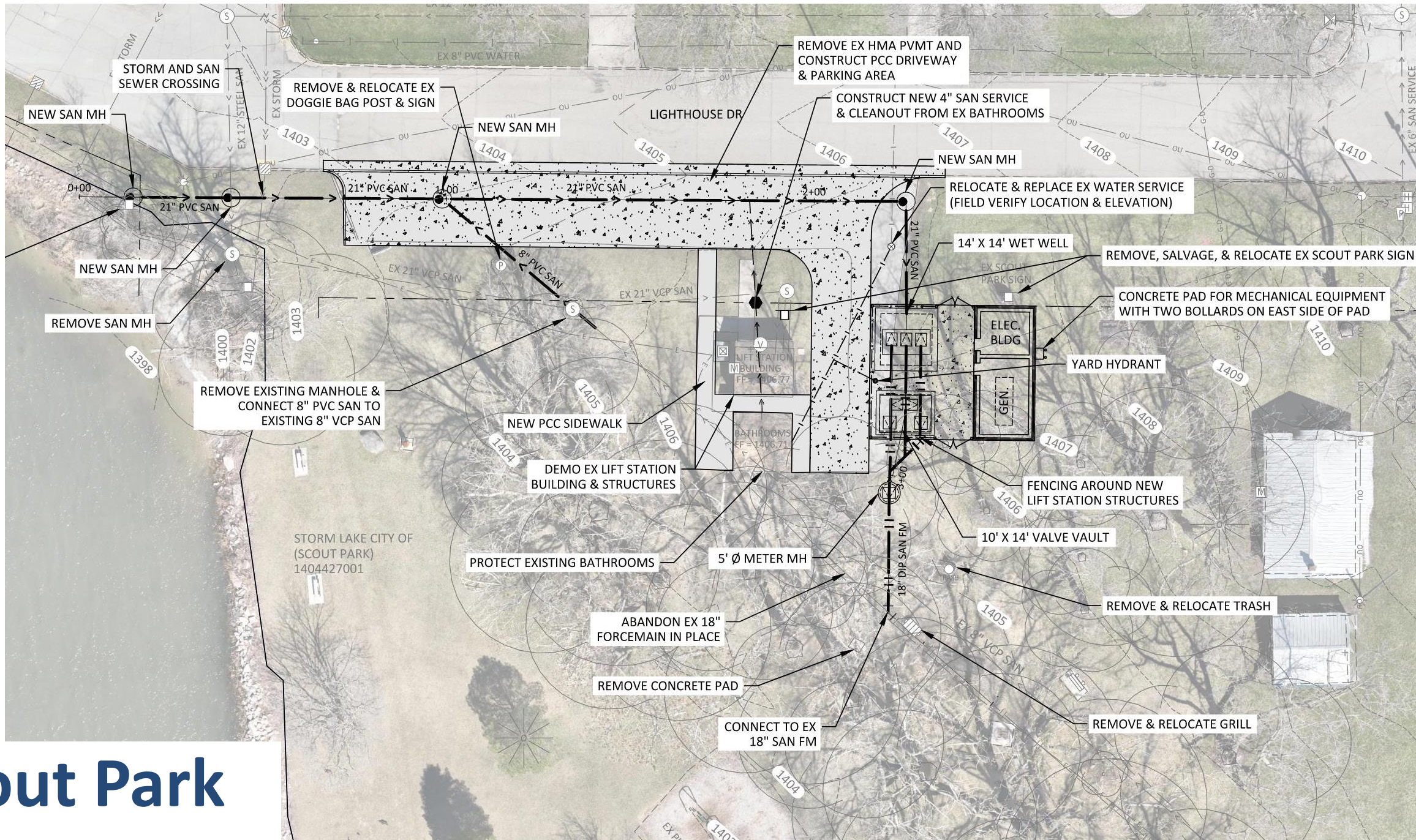


Scout Park



Lighthouse Drive Area

Restroom facilities will be closed during construction.
Temporary portable restroom facilities will be provided.



Scout Park

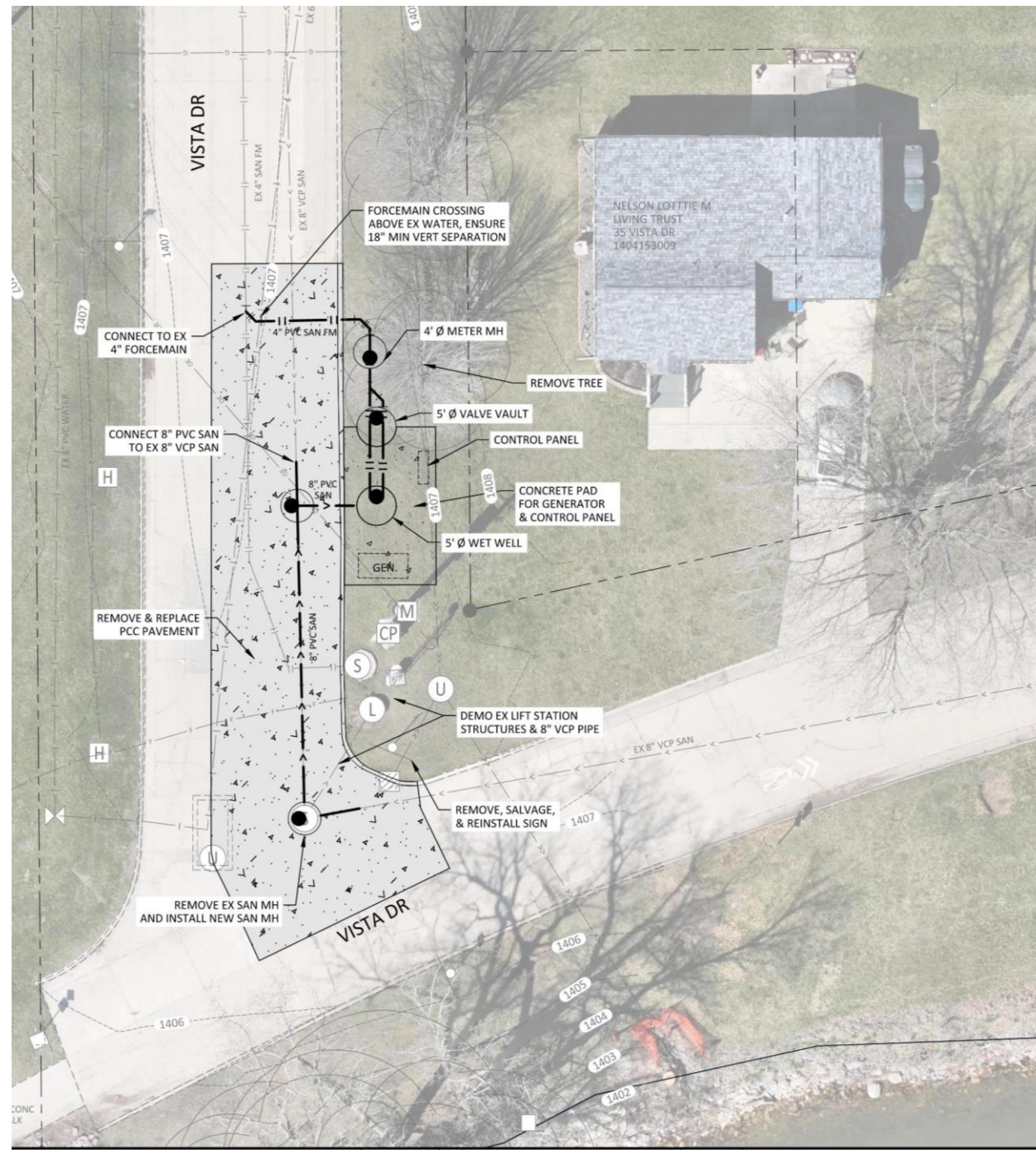
Ice House



Vista Drive Area

Bike path will remain open during construction

Ice House



Project Schedule

September 2024: Contract Award

March 2025: Physical Construction starting on Ice House Lift Station

May 2025: Physical Construction starting at Scout Park

Fall 2025: Most of Construction Anticipated to be complete

September 2026: Official Project Completion Date

Visit jumpintoconstruction-stormlake.com to learn more!





WELCOME

to the City of Storm Lake construction projects and general engineering information page.



2024 MEMORIAL ROAD



WASTEWATER INFRASTRUCTURE
MITIGATION





WASTEWATER INFRASTRUCTURE MITIGATION

PROJECT OVERVIEW

CONSTRUCTION UPDATES

SCHEDULE



OVERVIEW

The City of Storm Lake will be improving the Sanitary Lift Station at Scout Park and the Ice House Lift Station on the Southwest portion of Vista Drive. The improvements will include full replacement of each lift station to enhance sanitary sewer conveyance and mitigate potential loss of service due to flood hazards. Lane shifts and closures are planned for portions of Lighthouse Dr. and Vista Dr. throughout construction.

[CLICK TO SUBSCRIBE FOR UPDATES!](#)

[Click here to sign up.](#)

CONTACT

Katie Sterk

Principal Environmental Engineer and



Questions?

Visit

jumpintoconstruction-stormlake.com

to learn more!

