



Southview Blvd & 3rd Avenue Improvement Project

**Construction Staging and Scheduling Workshop 1
September 29, 2016**



Purpose of Meeting

- Project Update
- Lighting Alternatives
- Construction Staging and Schedule
 - We need your input!
- Next Steps and Schedule





Where We've Been...

- Last BAC/CAC meeting – May 2016
- Reviewed roadway design (12th Ave Intersection) and Streetscape Elements
- Open House 1 – June 2016





Project Updates

- **Two-way stop at 12th Ave**
(motion passed June 20, 2016)
- **Streetscape elements adopted**
- NOT including monuments
(Sept. 6, 2016)





Lighting Alternatives

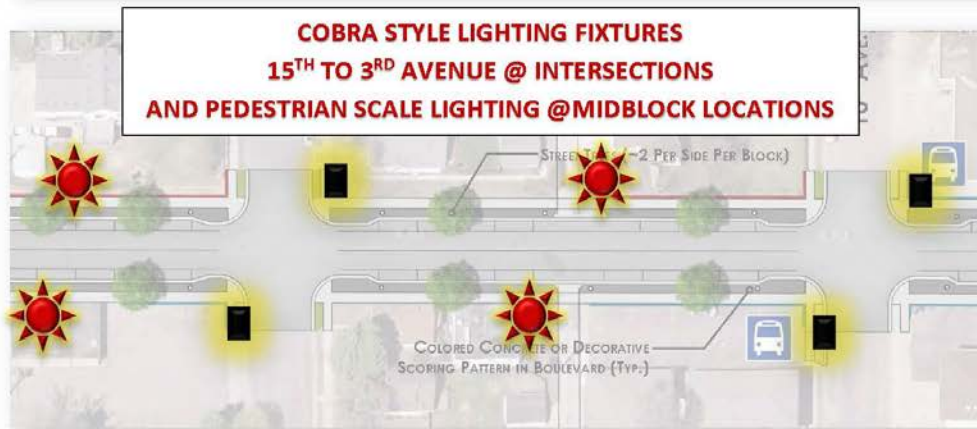
- **Presented to City Council in work session on Sept. 12**
- **Would like BAC/CAC feedback before moving forward.**

Goal: Create more even distribution of light throughout corridor to increase pedestrian and vehicular safety.

- *Lights to be installed, owned, and maintained by Xcel Energy -
Select styles to choose from.*
- *Lighting cost will not change assessment amount to property
owner*



Lighting Alternative 1



COBRAHEAD STYLE
LED LIGHT FIXTURE



ACORN STYLE
HPS LIGHT FIXTURE
(PEDESTRIAN SCALE)



COST ESTIMATE

COBRAHEAD STYLE LED LIGHTING @ \$5,000 PER UNIT

ACORN STYLE LIGHTING @ \$8,000 PER UNIT

BANNER ARMS @\$300 PER UNIT

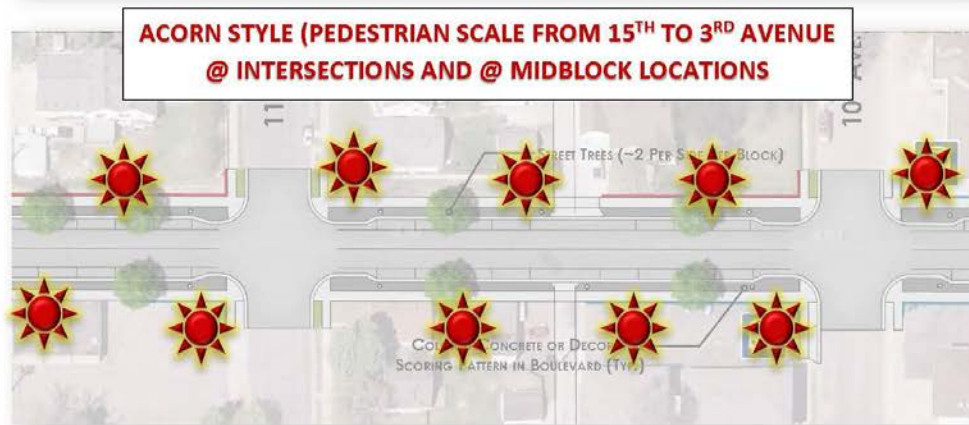
TOTAL APPROXIMATE CITY COST = \$345,000

POSSIBILITIES FOR HOLIDAY DECORATIONS

- COBRAHEAD: LARGER DECORATIONS
- ACORN STYLE: TWINKLE LIGHTS



Lighting Alternative 2



COBRAHEAD STYLE
LED LIGHT FIXTURE



ACORN STYLE
HPS LIGHT FIXTURE
(PEDESTRIAN SCALE)



COST ESTIMATE

COBRAHEAD STYLE LED LIGHTING @ \$5,000 PER UNIT

ACORN STYLE LIGHTING @ \$8,000 PER UNIT

BANNER ARMS @\$300 PER UNIT

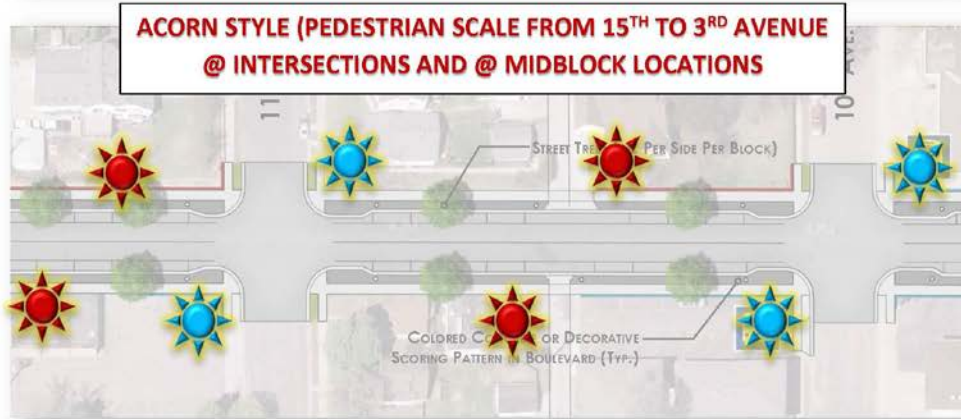
TOTAL APPROXIMATE CITY COST = \$670,000

POSSIBILITIES FOR HOLIDAY DECORATIONS

- COBRAHEAD: LARGER DECORATIONS
- ACORN STYLE: TWINKLE LIGHTS



Lighting Alternative 3



COBRAHEAD STYLE LED LIGHT FIXTURE



ACORN STYLE HPS LIGHT FIXTURE (PEDESTRIAN SCALE)



TEARDROP STYLE HPS LIGHT FIXTURE (PEDESTRIAN SCALE)



COST ESTIMATE

COBRAHEAD STYLE LED LIGHTING @ \$5,000 PER UNIT

ACORN STYLE LIGHTING @ \$8,000 PER UNIT

TEARDROP STYLE LIGHTING @ \$10,800

BANNER ARMS @\$300 PER UNIT

TOTAL APPROXIMATE CITY COST = \$547,000

POSSIBILITIES FOR HOLIDAY DECORATIONS

- COBRAHEAD & TEARDROP: LARGER DECORATIONS
- ACORN STYLE: TWINKLE LIGHTS





Lighting Alternatives

Questions/Clarifications?

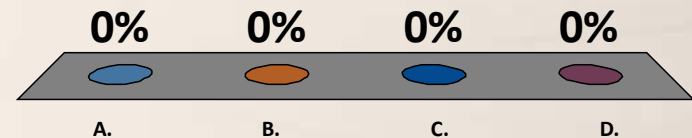




Which Lighting Alternative do you Prefer?

- A. Alt. 1 – Cobra at intersections, Acorn midblock
- B. Alt. 2 – All acorn East of 15th Ave.
- C. Alt. 3 – Decorative teardrop at intersections East of 15th, Acorn midblock
- D. No Preference/No Opinion

What do you think?





Construction Staging

Sequence and timing of work, or the steps that need to be taken during construction in order to build a project





Construction Staging and Schedule

- **Staging Considerations:**

- Key Routes (regional and local)
- Access in/out of area
- Public safety
- Space for contractor to work safely and efficiently
- Specific business needs
- Emergency services
- Community events

- **Schedule:**

- Duration of construction is based on production rates and probable working days
- May thru October is “normal” construction season
- 5 day working weeks, not including holidays



Construction Staging Alternatives

Option 1, Detour Traffic:

- Two-way detour route designated
- Contractor can be more efficient and complete work with less time in front of businesses

Option 2, One-Way Traffic:

- Maintain drive-by exposure to businesses
 - One-way traffic (eastbound) can fit alongside construction work
- Takes more time to construct





OPTION 1: Detour Traffic



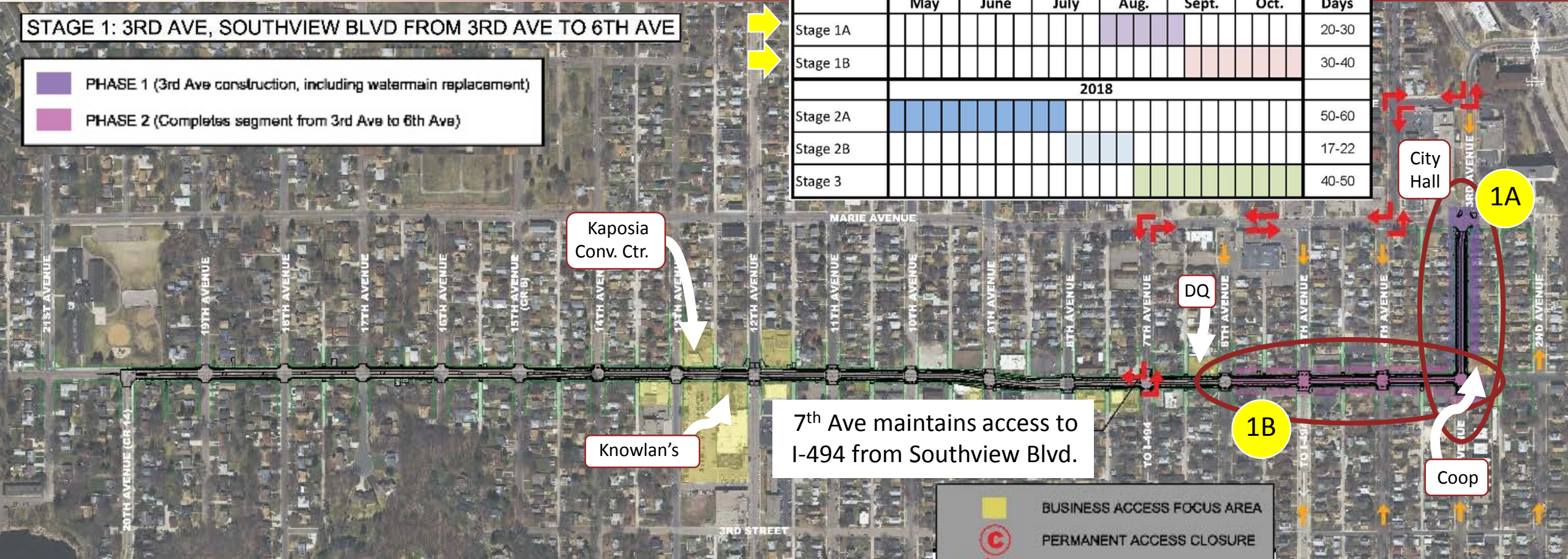


OPTION 1: Detour Traffic - Stage 1, 2017

STAGE 1: 3RD AVE, SOUTHVIEW BLVD FROM 3RD AVE TO 6TH AVE

- PHASE 1 (3rd Ave construction, including watermain replacement)
- PHASE 2 (Completes segment from 3rd Ave to 6th Ave)

	2017						Working Days
	May	June	July	Aug.	Sept.	Oct.	
Stage 1A							20-30
Stage 1B							30-40
	2018						
Stage 2A							50-60
Stage 2B							17-22
Stage 3							40-50



- BUSINESS ACCESS FOCUS AREA
- C PERMANENT ACCESS CLOSURE
- DETOUR ROUTE
- LOCAL TRAFFIC

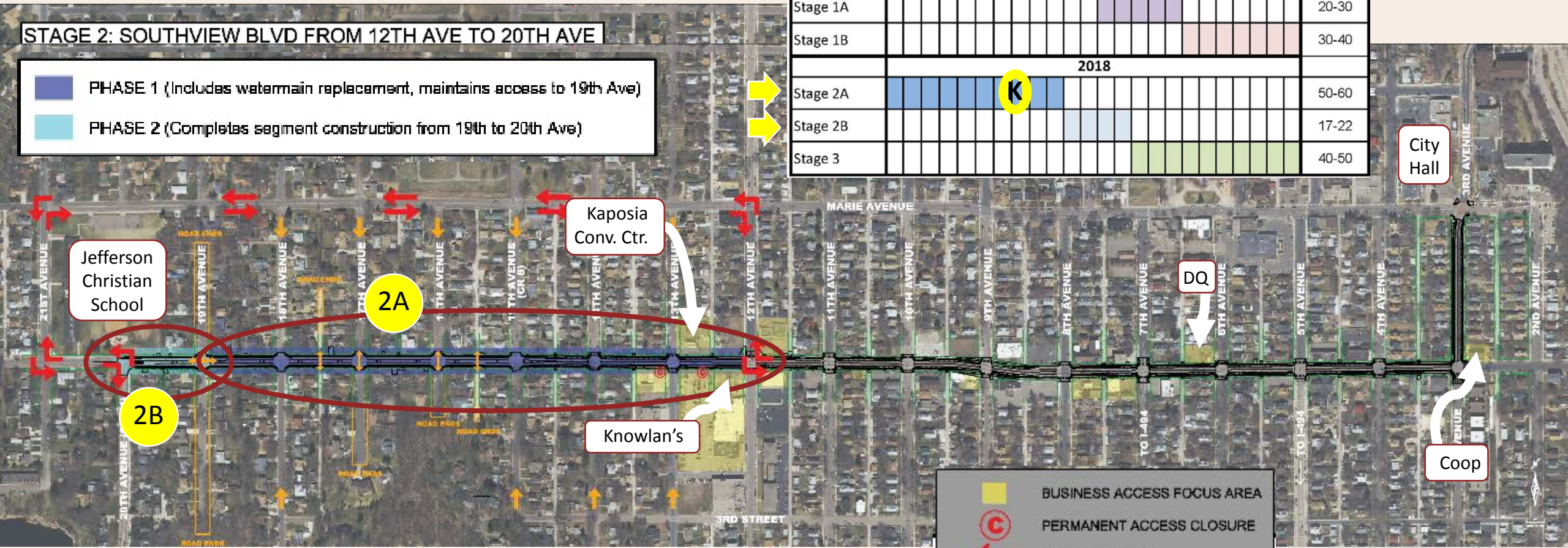


OPTION 1: Detour Traffic - Stage 2, 2018

STAGE 2: SOUTHVIEW BLVD FROM 12TH AVE TO 20TH AVE

- PHASE 1 (Includes watermain replacement, maintains access to 19th Ave)
- PHASE 2 (Completes segment construction from 19th to 20th Ave)

	2017						Working Days
	May	June	July	Aug.	Sept.	Oct.	
Stage 1A							20-30
Stage 1B							30-40
	2018						
Stage 2A							50-60
Stage 2B							17-22
Stage 3							40-50



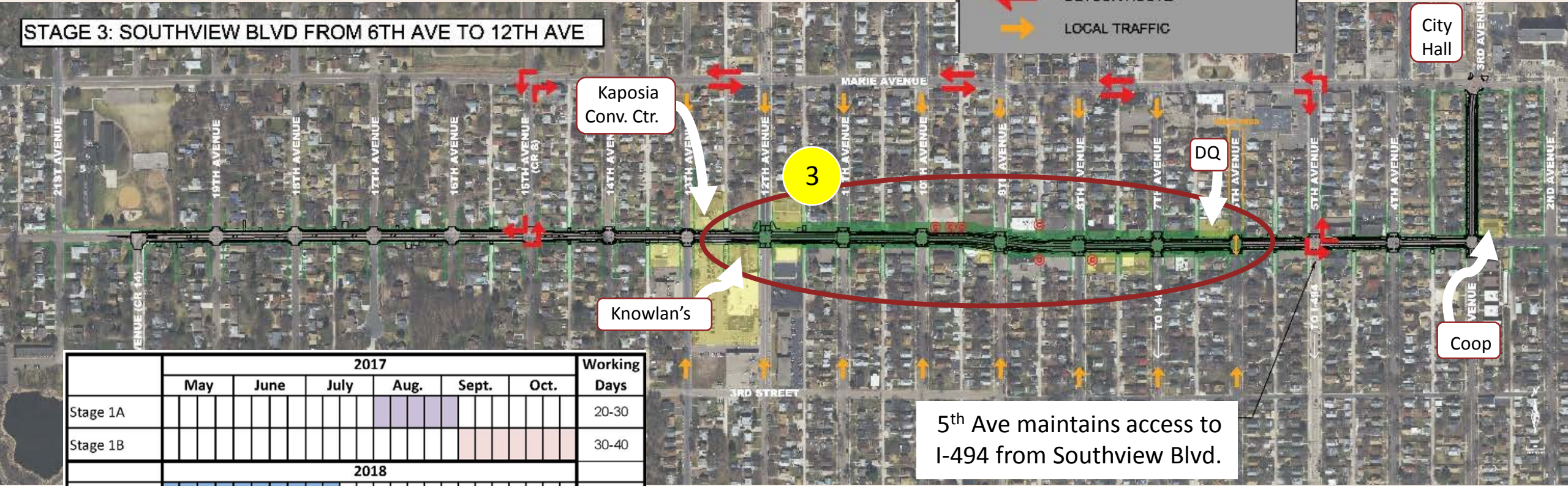
- BUSINESS ACCESS FOCUS AREA
- C PERMANENT ACCESS CLOSURE
- DETOUR ROUTE
- LOCAL TRAFFIC



OPTION 1: Detour Traffic - Stage 3, 2018

STAGE 3: SOUTHVIEW BLVD FROM 6TH AVE TO 12TH AVE

- BUSINESS ACCESS FOCUS AREA
- C PERMANENT ACCESS CLOSURE
- DETOUR ROUTE
- LOCAL TRAFFIC



	2017						Working Days
	May	June	July	Aug.	Sept.	Oct.	
Stage 1A							20-30
Stage 1B							30-40
2018							
Stage 2A							50-60
Stage 2B							17-22
Stage 3							40-50





OPTION 1:

Detour Traffic - Considerations

- 2017 Aug-Oct; 2018 May-Oct
- Close down sections of Southview Blvd to traffic
 - More efficient construction operations
 - Limited access from Southview Blvd to adjacent businesses during this time (most businesses affected during Stage 3)

Option 1 - Detour Traffic

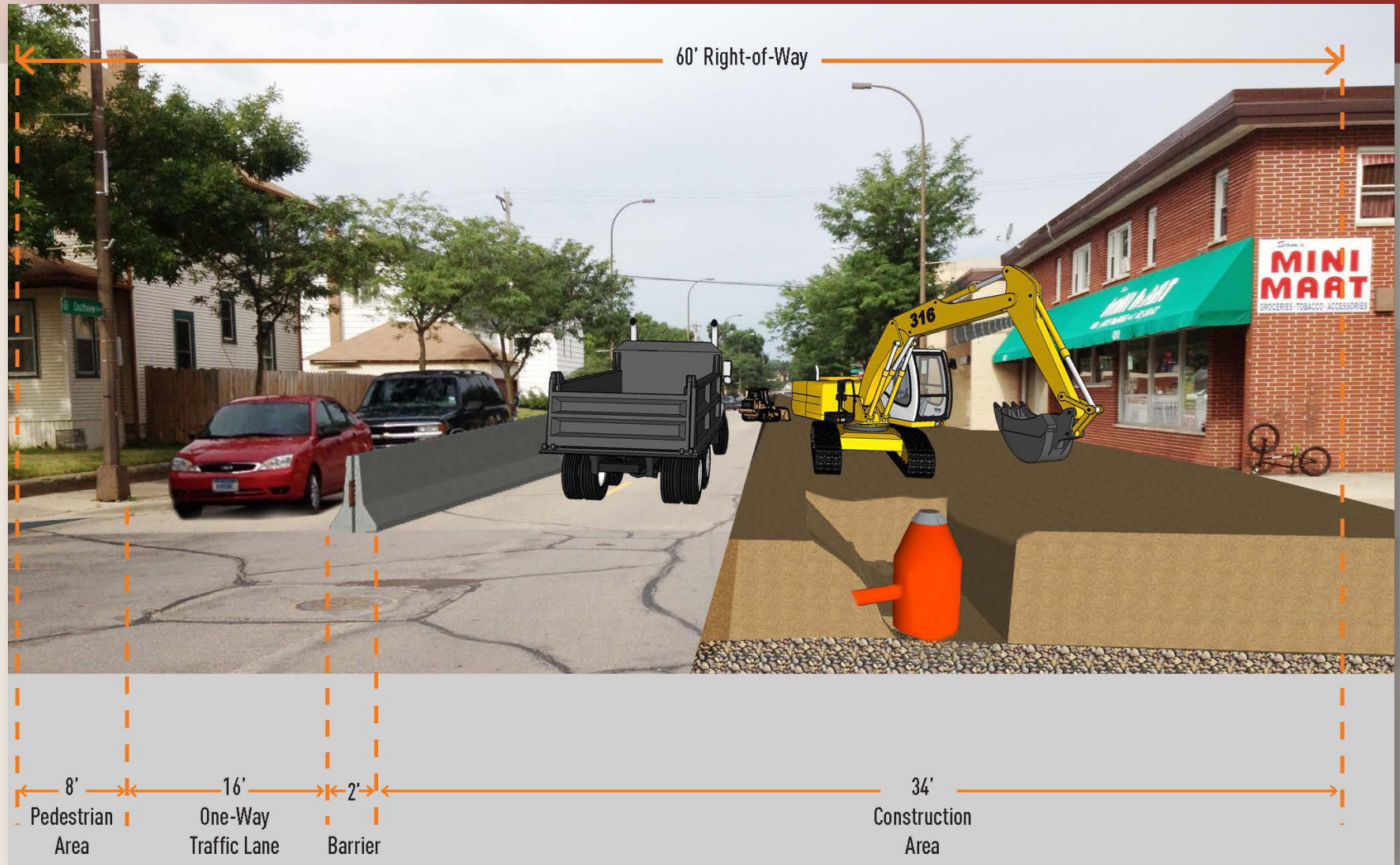
Stage	Est. Working Days	Duration (Months)	Year
1A	20-30	1-1.5	2017
1B	30-40	1.5-2	2017
2A	50-60	2.5-3	2018
2B	17-22	1	2018
3	40-50	2-2.5	2018

Notes:

Estimates are based on 5-day work week
2017 construction is approximately 3 months
2018 construction is approximately 6 months



OPTION 2: One-Way Traffic

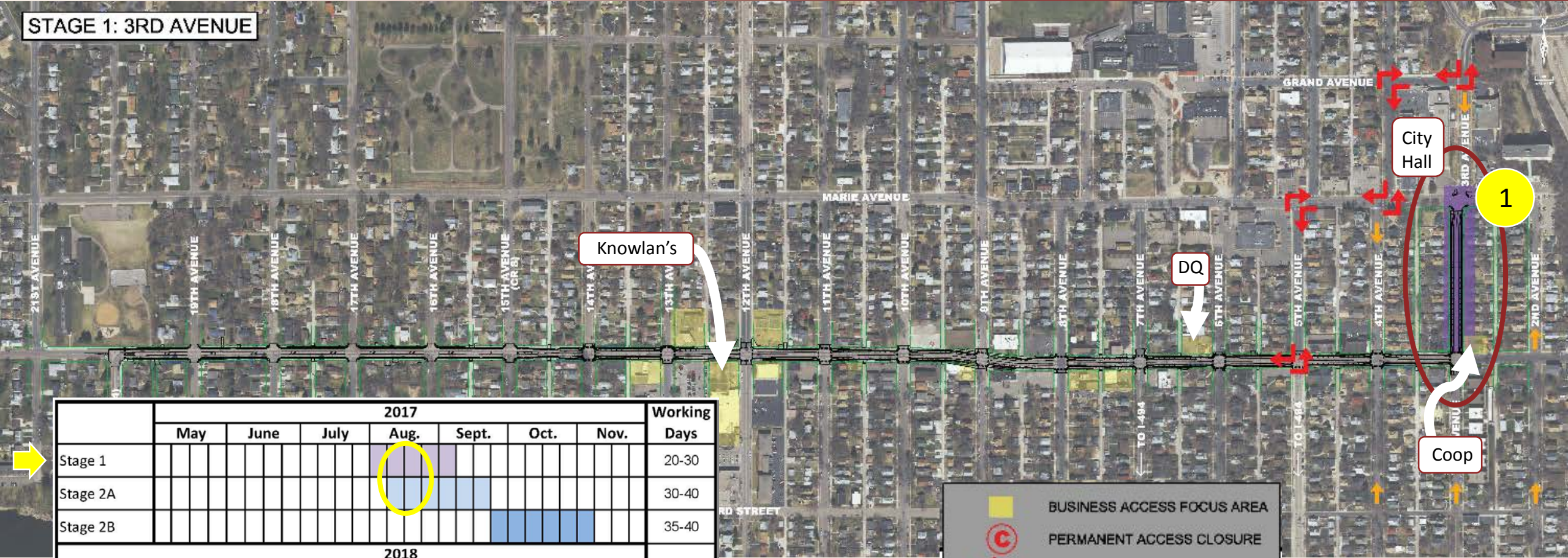




OPTION 2:

One-Way Traffic - Stage 1, 2017

STAGE 1: 3RD AVENUE



	2017							Working Days
	May	June	July	Aug.	Sept.	Oct.	Nov.	
Stage 1				■				20-30
Stage 2A				■	■			30-40
Stage 2B					■	■	■	35-40
2018								
Stage 3A	■	■	■	■	■	■	■	45-55
Stage 3B				■	■	■	■	45-55

- BUSINESS ACCESS FOCUS AREA
- PERMANENT ACCESS CLOSURE
- DETOUR ROUTE
- LOCAL TRAFFIC



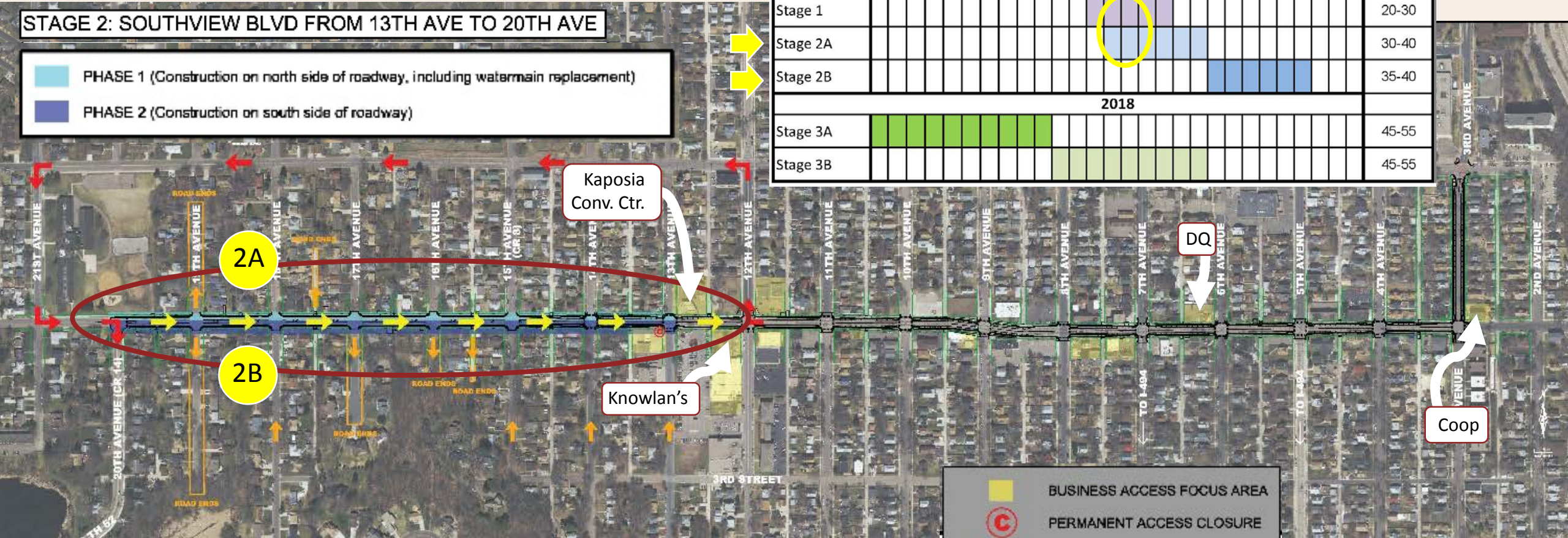
OPTION 2:

One-Way Traffic - Stage 2, 2017

STAGE 2: SOUTHVIEW BLVD FROM 13TH AVE TO 20TH AVE

■ PHASE 1 (Construction on north side of roadway, including watermain replacement)
■ PHASE 2 (Construction on south side of roadway)

	2017							Working Days
	May	June	July	Aug.	Sept.	Oct.	Nov.	
Stage 1								20-30
Stage 2A								30-40
Stage 2B								35-40
2018								
Stage 3A								45-55
Stage 3B								45-55



- BUSINESS ACCESS FOCUS AREA
- Ⓢ PERMANENT ACCESS CLOSURE
- ← DETOUR ROUTE
- LOCAL TRAFFIC



OPTION 2:

One-Way Traffic - Considerations

- 2017 Aug-Oct/Nov; 2018 May-Sept
- One-Way Traffic on Southview Blvd
 - Maintain business access (most businesses affected during Stage 3)
 - Construction for longer period
 - Conflict with Kaposia Days Parade Route (2018)

Option 2 - One-Way Traffic on Southview Blvd

Stage	Est. Working Days	Duration (Months)	Year	Notes
1	20-30	2	2017	Stages 1 and 2A are concurrent
2A	30-40			
2B	35-40	1.5-2	2017	
3A	45-55	2.5-3	2018	
3B	45-55	2.5-3	2018	

Notes:

Estimates are based on 5-day work week

2017 construction is approximately 3.5 months (more aggressive in 2017 than Option 1)

2018 construction is approximately 5.5 months



COMPARE:

Anticipated Working Days – Stage 3

Option 1 – Detour Traffic

- Stage 3: 40-50 working days, 8-10 weeks
- 12th-6th (6 blocks)

Option 2 – One Way Traffic

- Stage 3: 90-110 working days, 18-22 weeks
- 13th-3rd (10 blocks)
- Conflict with Kaposia Days Parade Route (2018)





Construction Staging

Questions/Clarifications?



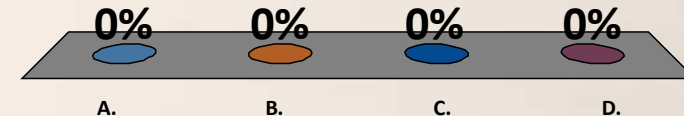


Which Construction Staging Approach Could You Support



What do you think?

- A. Option 1 only
Detour Traffic, close in segments
- B. Option 2 only
Maintain One-Way Traffic
- C. Both Options 1 & 2
- D. No Preference/No Opinion





Where We're Going...

- Nov. 2016 - Construction Staging Workshop 2
- Dec. 2016 – Public Open House 2

- Summer 2017 – Begin Construction
- Fall 2018 – Finish Construction





Project Contacts

John Sass– Dakota County

952-891-7130

john.sass@co.dakota.mn.us

Matthew Parent– Dakota County

952-891-7271

matthew.parent@co.dakota.mn.us

Chris Hartzell – South St. Paul

651-554-3210

chartzell@sspmn.org

Chris Chromy – Bolton & Menk

952-890-0509

chrisch@bolton-menk.com

www.southviewblvd.com

